

Sold on Environmental Education

(Reprinted with permission from the GCSAA's Newsline magazine)

Bob Mateja isn't a salesperson, but he has generated excitement and made an impression in Plymouth, Mich.

He's done it by participating in the Audubon Cooperative Sanctuary Program (ACSP) for Schools, a hands-on environmental education program designed to provide stewardship opportunities for elementary, middle and high school students. The program is administered by Audubon International and sponsored in partnership by GCSAA and Rain Bird.

Mateja, director of grounds and facilities for Fox Hills Golf and Conference Center in Plymouth, met with the owners of the 45-hole course in April 1996 to discuss sponsoring the program. He discovered there was little need to sell the course owners on the benefits to both their facility and local children, so his next step was a cold call to the Salem Elementary School principal.

After explaining the program and his course's offer to pay the school's \$100 registration fee and annual dues, Mateja received an encouraging: "Come on over!"

Salem Elementary was chosen because it's located within five miles of Fox Hills. Mateja had no connections to the school, but he went over to meet the principal with an armful of videos and literature provided by Audubon International and GCSAA.

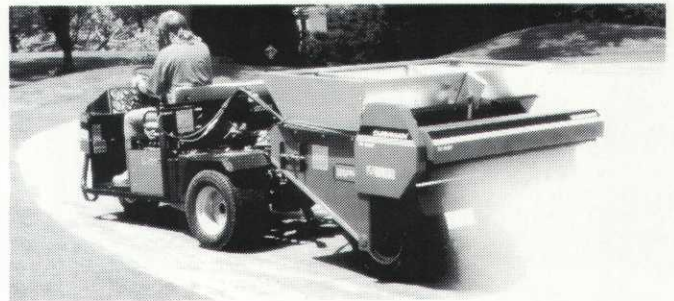
Although his knees were knocking, he came out of the meeting 45 minutes later with new knowledge that the school had already received an \$83,000 grant from the federal government to develop an outdoor research lab. The school considered Mateja the perfect professional to voluntarily assist with environmental education and the development of a wetland, a prairie area and a nature trail, among other projects. The school board also invited him to a preliminary site review meeting to establish plans for the outdoor research lab.

Though plans for the outdoor research lab are on hold until sewer construction is completed in the area, Mateja has helped the school conduct a resource inventory, which is the program's first activity. Audubon International reviews the inventory to provide a conservation report that identifies projects suitable for the school and Mateja and his crew also will use the report to offer assistance and guidance.

This summer, Mateja sees the potential for some of his 35 crew members and area Boy/Girl Scouts to pursue projects at the school. In addition, the fall agenda is already being considered and includes nest box projects and student tours of the golf course and the prairie areas at their

(Continued on Page 28)

High Performance Top Dressers From Cushman



Mount the TD 1500 on your Turf-Truckster® or the TD 1000 on your Jr. Turf-Truckster for high performance, efficient top dressing. The textured surface design of the TD 1500 endless conveyor belt distributes materials evenly for maximum effect. Both top dressers are ideal for greens, fairways and athletic fields.

The Cushman® 5th Wheel Top Dresser 2000 is big enough to cover large areas quickly and light enough on its feet to use on greens. Its large hopper can hold up to 2,500 pounds of material, yet it exerts a very low 12 psi ground pressure. A hydraulic motor powers a durable conveyor that feeds material through a rotating brush. Add the Turf-Truckster's exclusive ground speed governor, and you have a consistent spreading thickness over a 60-inch swath.



Contact us today ...
for a free demonstration.

Authorized Factory Dealer Since '49

CUSHMAN MOTOR CO., INC. CUSHMAN TURF-CARE EQUIPMENT

2909 EAST FRANKLIN AVENUE • MINNEAPOLIS, MINNESOTA 55406 • (612) 333-3487 • FAX (612) 333-5903 • TOLL FREE 1 (800) 759-5343



Its good looks and major components have something in common. They're easy to see.



Tilt the top fender and grill out of the way, and lift off the air intake cover.

You'll see how easy Jacobsen's new Tri-King™ triplex trim mower is to maintain. It's also easy to operate with responsive power steering, automatic

3-wheel drive, powerful 18 hp gas or

19 hp diesel engines and a comfortable, new

operator's area. You'll get

the highest quality of cut, and

a choice of 72" or 84" cutting widths with 5-, 7- or 10-blade reels. Ask your Jacobsen distributor for a demonstration, or call 1-800-727-JAKE.

THE PROFESSIONAL'S CHOICE ON TURF.

**JACOBSEN
TEXTRON**

Jacobsen Division of Textron Inc.

<http://www.jacobsen.textron.com>



NORTH STAR TURF, INC.

3080 Centerville Road
St. Paul, MN 55117

(612) 484-8411
(800) 592-9513



Highest
quality of cut.
Trouble-free
adjustments. Every time.

State Legislation/Regulation Section

Of the 1997 GCSAA Legislative/Regulatory Agenda

STATE LEGISLATION/ REGULATION

Posting and Notification

Bills on the use of pesticides and posting/notification requirements may continue to appear (see also Preemption). Proposals regarding public buildings may signal future government action affecting other pesticide users in those states.

Plan of Action: With the assistance of RISE, GCSAA will continue to monitor and report on posting and notification legislation as it is introduced in the states. The association will also notify members of grassroots lobbying opportunities and communicate a GCSAA position as appropriate.

Preemption/Primacy

Many states have preemption laws

to prohibit municipalities from adopting local laws and regulations regarding posting and notification of the use of pesticides and hazardous chemicals. Attempts to overturn or challenge these laws are possible in several states, as environmentalists push local governments to act.

Plan of Action: GCSAA will continue to monitor and report on preemption legislation, communicate the position of the association and support grassroots efforts and coalition-building in the states. RISE members can also be expected to lobby on this issue.

Effluent

State and local (district) laws and regulations govern water reuse and effluent water issues, which can have a significant impact on golf course maintenance and development. The level and effectiveness of state regulation varies.

Plan of Action: GCSAA will continue to monitor and report on state effluent and water reuse legislation.

Proactive efforts will be undertaken to open lines of communication among "stakeholders" and identify or develop good models.

Water Resources

Appropriation and the use of surface water and groundwater is expected to re-

ceive increased attention in state legislature and localities.

Plan of Action: GCSAA will continue to monitor and report on government activity regarding the use of water resources and continue to evaluate developments in regard to a proactive role in the management of water issues nationwide.

Environmental Audits

State legislation offers regulated entities legal privilege and/or immunity from state fines for state violations discovered during voluntary environmental audits, as long as corrective action is taken. Almost half the states have adopted laws, which are seen as an effective incentive to conduct audits. The EPA opposes privilege provisions and has threatened to pull delegated enforcement authority in privilege states.

Plan of Action: GCSAA will monitor and report on legislative proposals and publicize grassroots lobbying opportunities. GCSAA will also work with the Ad Hoc Group on Environmental Audit and Disclosure Legislation coalition.

Wetlands

State wetlands legislation ranges from easing or eliminating the restrictions on wetlands use to strict permitting and licensing of wetlands, including redefining what constitutes a wetlands area. These laws have the greatest impact on golf course renovation and development.

Plan of Action: GCSAA will monitor and report on proposals to amend wetlands laws, publicize grassroots lobbying opportunities and provide compliance information. The Environmental Principles for Golf Courses will serve to answer inquiries about GCSAA's position on wetlands, and reports about members' efforts to provide or preserve wetlands will be publicized.

(Continued on Page 26)

We'd like to say we buried the competition. But that would mean putting an extremely inferior fertilizer in the ground.



Only par ex with IBDU® has the highest WIN percentage.
We have more than Lebanon* and more than Scotts. Because the higher the Water Insoluble Nitrogen content, the longer your turf will remain green and the less chance there is for burn.

 **IMC Vigoro**

FROM FERTILE MINDS.

*Lebanon is a trademark of Lebanon Seaboard Corporation. Scotts is a trademark of O.M. Scotts & Sons Co. © 1996 IMC AgrBusiness Inc. All rights reserved.

Precision Turf & Chemicals 7728 Commerce Circle Greenfield, MN 55373 612-559-5293	Ken Quandt Territory Manager West Allis, WI 414-327-3993
---	--

CENTURY RAIN AID

Irrigation Equipment For Golf Courses

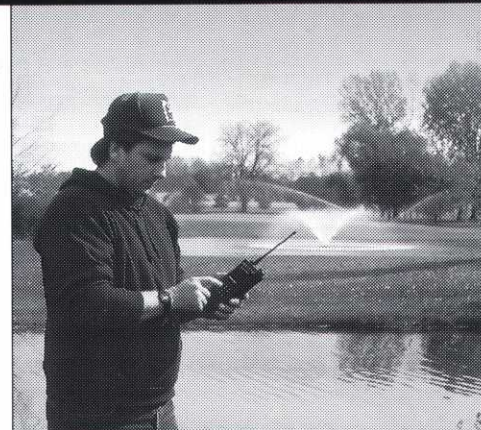


F e a t u r i n g



LEGACYTM
GOLF IRRIGATION

Bittersweet Golf Course, Gurnee, Illinois



Legacy Central Control System



Legacy Golf Rotors

CALL CENTURY FOR SOLUTIONS AND A FREE GOLF CATALOG

Century Golf professionals have provided golf course irrigation systems for more than 30 years. We offer technical assistance and can help you with sprinklers, valves and controllers • pump stations • drainage • landscape lighting • aerating fountains and more.

CALL TODAY

800-347-4272

There's a Branch Near You
Visit our website: www.rainaid.com

LEGACY GOLF NOW AVAILABLE IN THESE MAJOR MARKETS

ALABAMA • DELAWARE • FLORIDA • GEORGIA • ILLINOIS • INDIANA • MARYLAND • MICHIGAN • MINNESOTA
NEW JERSEY • NORTH CAROLINA • PENNSYLVANIA • SOUTH CAROLINA • VIRGINIA • WEST VIRGINIA • WISCONSIN • ONTARIO, CANADA

CLASSIFIED ADS

FOR SALE

- 40 Toro VT3 Controllers \$400
- 1 LTC Controller . . . \$600

All controllers include steel pedestal and control panel.

Contact:

TOM FISCHER
Edinburgh USA

(612) 424-8756

FOR SALE

1991

Toro Fairway Aerator
— Model 9500

Used one season.
Price is negotiable.

Contact: KEVIN CLUNIS
St. Croix National Golf Club

(715) 247-4260

FOR SALE

1991 Ryan GA60

145 hr. — Excellent Shape
5/8 & 3/4 tine holders
\$16,000

1989 Jacobsen HR-15
Rotary Mower

80 hp. Perkins Diesel,
15' cut — \$9,000

Contact: CURT NORTON

612-472-7546

1997-98 MGCSA DUES ARE NOW PAST DUE!

If you need a new dues form, please call the MGCSA office at
612/473-0557
or Toll Free at
1-800-MGCSA-27

USED EQUIPMENT SALE

72" Rotary Mowers
\$3500.00 & up

Cushman Trucksters
\$2500.00 & up

Ransomes Fairway Mower, Motor 5/3
\$1995.00

Jacobsen 2315 Utility Truck,
hyd dump
\$2950.00

Gem Line Trailer Sprayer
\$995.00 **SOLD**

Ransomes Tractor Mount,
hyd 5-gang
\$7995.00

Cozy Cab for Toro Groundsmaster
\$895.00

Toro Greens-Plex
\$2500.00

Jacobsen Walking Greensmower
\$895.00 **SOLD**

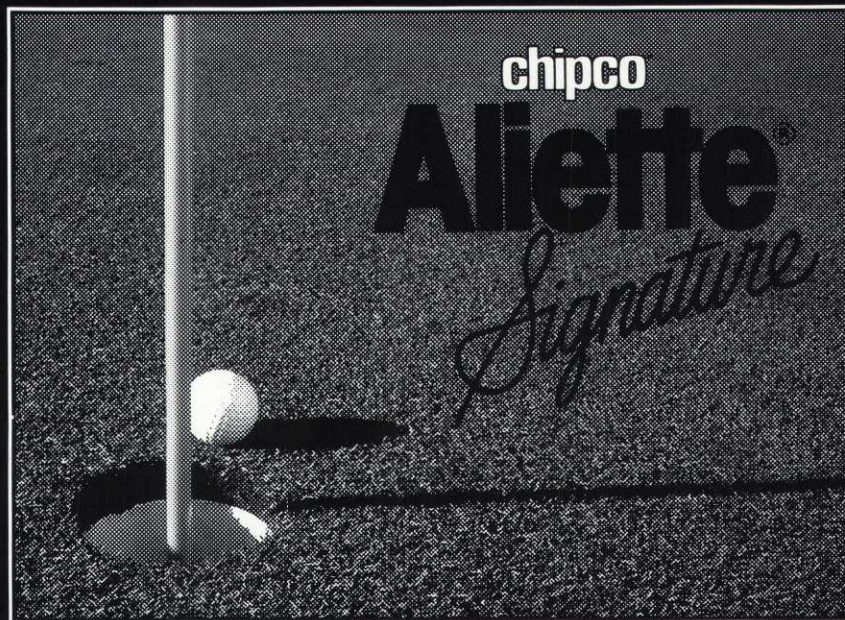
Terra-Care Aerator
\$995.00

*More trades on the way, give us a call and
we'll find what your looking for!!!*

CUSHMAN MOTOR CO., INC.
612-333-3487 or 800-759-5345

**THE SCHOLARSHIP
SCRAMBLE AT HIDDEN
CREEK GC IN OWATONNA
ON JULY 14
HAS AVAILABLE SPOTS
FOR THE MORNING
SHOTGUN — THE
AFTERNOON SHOTGUN
IS FULL**

ANNOUNCING THE NEXT STANDARD IN TURF QUALITY AND TANKMIX FLEXIBILITY



**SEE THE SIGNATURE DIFFERENCE
ON YOUR TURF.**

RHONE-POULENC AG COMPANY

P.O. Box 12014, 2 T.W. Alexander Drive
Research Triangle Park, NC 27709
1-800-334-9745

State Legislation—

(Continued from Page 23)

Endangered Species

Some enforcement of the Endangered Species Act has been delegated to the states. Proposed legislation includes classification/listing guidelines and resolution of various controversies involving economic impact and enforcement issues.

Plan of Action: GCSAA will monitor and report on proposals to amend the Endangered Species Act, publicize grassroots lobbying opportunities and provide compliance information. The Environmental Principles for Golf Courses will serve to answer inquiries about GCSAA's position on endangered species, and reports about members' efforts to provide or preserve habitats for endangered or threatened species will be publicized.

Pesticide Applicator Licensing

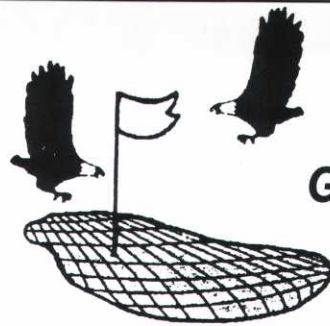
State licensing laws may be subject to modification, including changes of definitions, scope and registration fees.

Plan of Action: GCSAA will monitor and report on legislation concerning pesticide applicator licensing and publicize grassroots lobbying opportunities.

Multiple Chemical Sensitivity / IEI

Efforts are being made in some states to recognize multiple chemical sensitivity (also known as idiopathic environmental intolerance) in public policy, so public funds can be used for research, services and treatment.

Plan of Action: GCSAA will monitor and report on government activity and work through RISE to identify grassroots lobbying opportunities for superintendents.



Mel Strand, CEO
35 years experience

Double Eagle Golf Construction

*Redesign the Old
...Construct the New*

17555 Madison St. • Ham Lake, MN 55304 • (612) 434-0054

CORRUGATED POLYETHYLENE PIPE

Prinsco pipe
will keep your greens
and fairways dry...
and always
ready to play.



PRINSCO INC

Manufacturer of GOLDFLO Dual-Wall and
GOLDLINE Corrugated Polyethylene Pipe

800-992-1725

**CALL FOR A FREE CATALOG
and the distributor nearest you.**

Job Openings

To: Members/MGCSA

Midwest distributor of Toro products seeking mechanic with two plus years experience in commercial lawn equipment repair including hydraulics, drive train, electrical and diagnostics. Must have own tools. OPEI certification(s) or ability to be certified a plus. Competitive wages and incentives based on experience. Benefits include health, disability and life insurance and 401K.

Send resume or apply in person to Randy Mackeben.

MTI DISTRIBUTING CO.

14900 21st Avenue N.
Plymouth, MN 55447
(612) 475-2200

To: Members/MGCSA

The Peterson Seed Company is now accepting applications for the position of REGIONAL SALES REPRESENTATIVE. Responsibilities would include managing turf seed accounts in portions of Minnesota and Wisconsin. Applicant should have minimum two years of sales experience. Horticultural background helpful.

Peterson Seed Company Inc., located in Savage, Minn. markets turf and forage seed products domestically and internationally.

Benefits include:

- Company-paid Group Health Insurance.
- Medical and Hospitalization Plan.
- Paid Vacation
- Pension Plan.

Reimbursement for company related expenses.

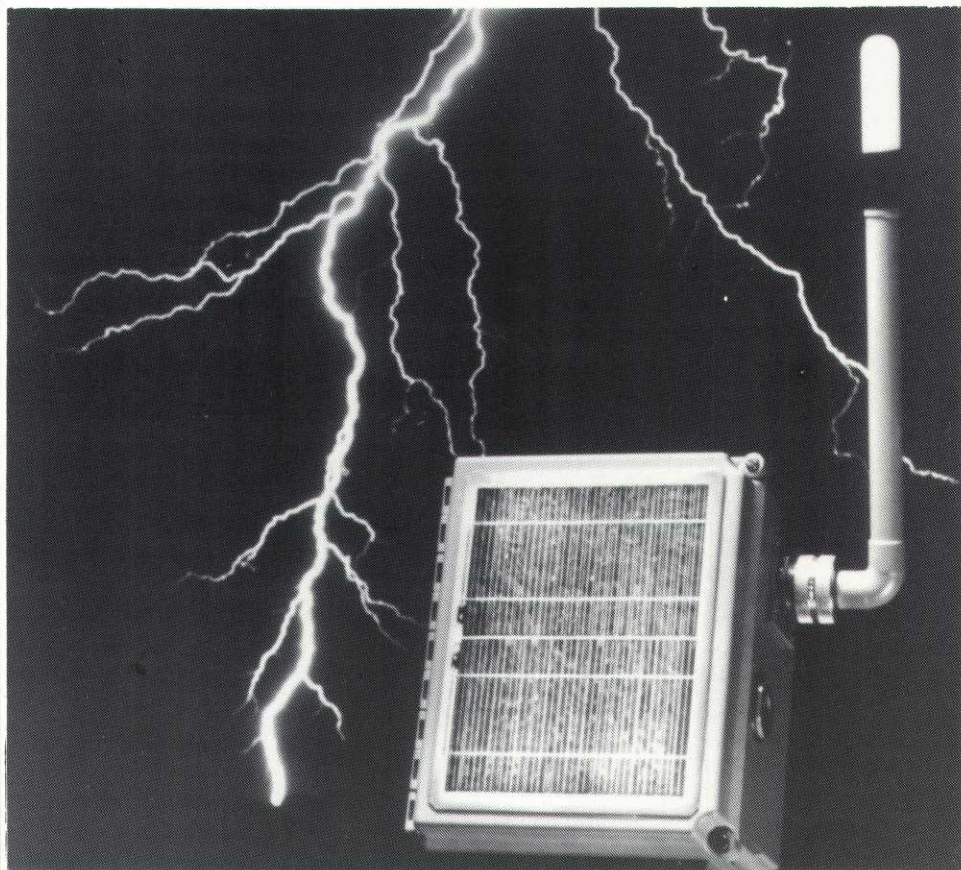
Salary Range: \$25,000-\$35,000 and discretionary.

Resumes should be directed to:

SCOTT PATTERSON
Peterson Seed Company, Inc.
P.O. Box 346
Savage, MN 55378

ESID

ELECTRICAL STORM IDENTIFICATION DEVICE



Early warning of thunderstorm activity in your area is essential when you need to make critical decisions regarding personnel safety and the isolation of sensitive equipment. The USGA, PGA, and over 500 individual golf courses rely on **Global Atmospheric Inc.**, manufacturer of **ESID**.

Renowned organizations such as NASA, Seaworld, the National Weather Service, the U.S. Military, American Airlines, MCI and hundreds of customers in over 30 countries worldwide have chosen **Global Atmospheric** to meet their lightning warning, detection and information needs. This depth of experience is just one of the reasons that led **TORO**, the leading turf management organization in the world and **QPS**, manufacturer of the #1 golf course siren system, **COURSE ALERT**, to select **Global Atmospheric** to co-develop a product to meet the unique needs of their golfing customers, friends and associates.

That product is **ESID**

When you need . . .

- 100% Thunderstorm Detection Efficiency
- Complete Warning / System Shut-down Automation
- Zero False Alarms
- Highly Accurate Range Information
- Easy Installation
- Low Maintenance
- Patented State of the Art Technology

. . . and the **confidence** of teaming up with the **World Leader** in lightning detection and location.

MTI DISTRIBUTING CO. **TORO**

Contact: **Dean Chaltas** at **612-475-2200** ext. 224

14900 - 21st Avenue North, Plymouth, MN 55447

Environmental Education—

(Continued from Page 21)

peak.

For those superintendents considering involvement in the program, Mateja emphasizes that it doesn't take much time or money and the public relations aspect has real value.

"The benefits to the course are great," he says. "We've received a lot of positive press . . . and the community doesn't have the inaccurate perception it once did of us as the big polluter. It sees us as the environmental giant helping them out."

Mateja is now considering adopting a second school as early as next fall. This one may be a middle school that's closer to home so he can stop on his way to and from the golf course.

And it only took one cold call — now Mateja is not only sold on the program, but he's bringing its educational benefits to children throughout his community.

For a complete packet of information on how to get started with the ACSF for Schools, contact GCSAA's media/public relations department at 800/472-7878, ext. 608, or Audubon International at 518/767-9051.

Getting Started in the Schools Program

1. Identify a local school you'd like to adopt and obtain permission from your course's decision-makers.
2. Contact Audubon International at 518/767-9051 to re-

quest a packet of materials that can be used to help explain the program to the school(s).

3. Identify a contact person at the school. Make a phone call, set an appointment to further explain the program in person and follow up with a letter.

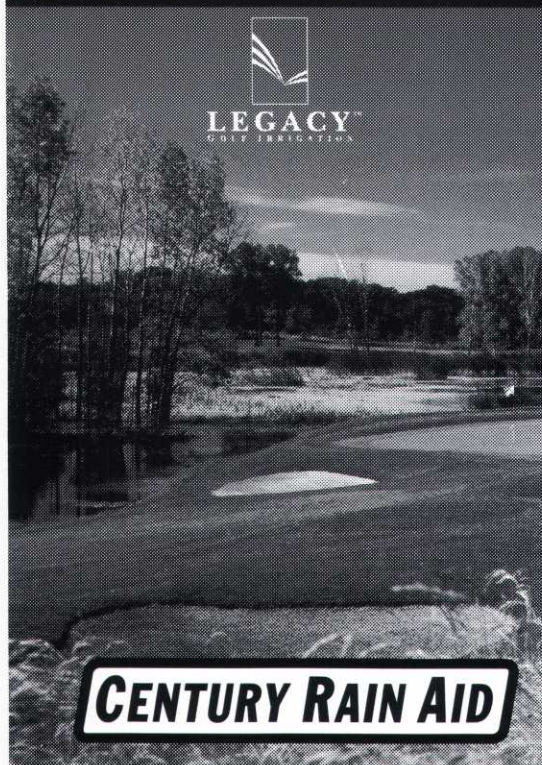
4. Assist with the \$100 registration fee if possible and complete the registration form available through Audubon International.

5. Be patient. Understand that it takes time to develop a successful educational program and fit it into the existing curriculum.

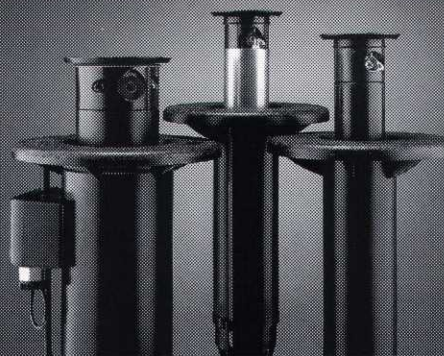


Rob Panuska listens to Rick Lucken's advice on how he can reduce his handicap.

LEGACY – RELIABLE PRODUCTS FOR GOLF COURSES



CENTURY RAIN AID



Legacy Golf Rotors

Century – Your Link to Legacy Golf

More golf course professionals like yourself are switching to Legacy irrigation. Your local Century golf representative can show you the advantages of a Legacy system and can offer valuable technical assistance on a new course or retrofit.

CENTURY GOLF PROFESSIONAL - MINNESOTA
Arlan Rust • 608-583-3039

LEGACY GOLF NOW
AVAILABLE AT
CENTURY RAIN AID IN
THESE MAJOR MARKETS

- ALABAMA • DELAWARE
- FLORIDA • GEORGIA
- ILLINOIS • INDIANA
- MARYLAND • MICHIGAN
- MINNESOTA • NEW JERSEY
- NORTH CAROLINA
- PENNSYLVANIA
- SOUTH CAROLINA
- VIRGINIA • WEST VIRGINIA
- WISCONSIN
- ONTARIO, CANADA

Call for a Free Catalog
800-347-4272

www.rainaid.com

Here's a Hole-by-Hole View Of Rush Creek Golf Club

By TOM FULLER

Superintendent, Rush Creek Golf Club

Rush Creek stretches over 260 acres of rolling prairie and natural marshes. No matter what level game you play, the course was strategically designed to offer new and challenging experiences each round. Three sets of tees have been placed to accommodate a variety of skill levels.

Rush Creek is home to a large variety of plant and animal life, ranging from nine different species of naturalizing grasses to striped gophers, muskrats, red fox and snapping turtles.

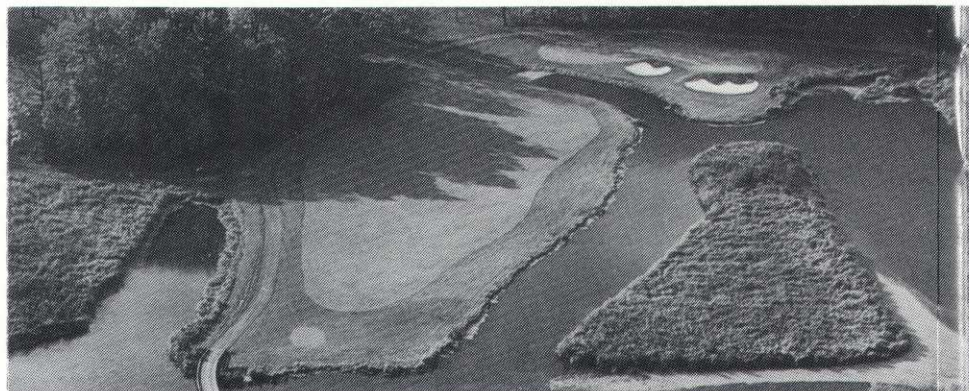
Over two dozen types of birds: larger species — pheasants, owls, hawks and smaller feathered friends — chickadees, killdeer and hummingbirds. There also are a variety of water fowl inhabiting the many ponds and wetlands scattered around the property. Great blue herons (not to be confused with Rush Creek's touring golf professional Tim Herron!) co-exist with swans, egrets and ducks.

The flora and fauna change with the seasons, as does the color palette seen through the golf course. Wildflowers in hues of yellow (coreopsis, black-eyed Susan, rudbeckia and goldenrod among others) are complemented by bleeding hearts, bachelor's buttons and blue flax. Aquatic plants include white and yellow water lilies and purple loosestrife.

Take note of the variety of bird boxes dotting the golf course and be alert for environmentally-sensitive habitat signs.

1 399 Yards Par 4

Don't miss this generous fairway, as the left rough is riddled with ridges and hollows that penalize errant tee shots. The approach is downhill to a long, narrow green protected by a bunker on the left.



2 525 Yards Par 5

Water extends down the entire left side of the hole, while a long stand of pines protects the right. Accuracy is essential through the green, as the putting surface is surrounded with trouble. Bold play may result in an eagle, but any mistake could mean disaster.

3 173 Yards Par 3

Don't be fooled by distance. This uphill hole requires a well-struck tee shot to reach the diagonal green that is protected on the right by two steep-faced bunkers. The left side consists of hillocks, mounds and grassy hollows that bleed onto the green.

4 336 Yards Par 4

Bunkers guard the premium landing areas from the elevated tees. The approach is only a pitch but tends to be tricky as the green rises 25 feet from the 150 yard pole and is surrounded by grassy hollows. Accuracy is essential as the green slopes off on all sides.

5 417 Yards Par 4

A 35-foot drop from the tees to the fairway can help you gain distance on your drive but mature trees

lining the saddle-shaped fairway call for accuracy. The approach requires a delicate shot over a pair of fore-bunkers while a large, deep bunker guards the entire left side of the green.

6 340 Yards Par 4

The tee shot must be carefully placed atop a narrow plateau with trees protecting both sides of the fairway. Your approach, although not more than a pitch, must carry the front bunkers and yet be delicate enough to hold a shallow green.

7 203 Yards Par 3

Don't be distracted by the view from the tees which are 30 feet above the green. This lengthy hole requires precise club selection with the green nestled amongst three bunkers and a small finger of water on the right. The narrow green leaves little room for error.

8 581 Yards Par 5

A long fairway bunker on the left side captures many tee shots. Take your time on your second as a pond borders your landing area on the left while large mounds flank the

(Continued on Page 31)

TEE-TO-GREEN QUALITY FROM JOHN DEERE

2653

Hydraulic reel drive, exceptional climbing ability, and 26-inch cutting units let you mow where others can't.



GATOR VEHICLES*

Your best choice for utility hauling with 4- and 6-wheel low-ground-pressure models available.

3215/3235

Both deliver ground-hugging fairway performance with five John Deere-manufactured 22-inch cutting units.



3365

Five 30-inch cutting units combine to deliver a quality cut over wide areas—from fairways to roughs.

1200A

New design features more power, more comfort, more attachments, and less noise.



1800

True utility performance with your choice of sprayer, spreader, and cargo box configurations.

220

This new walk-behind features an operator-presence safety system, new engine, and 11-bladed reel.



2243

Gas and diesel models both feature 18-hp engines and John Deere cutting units, for exceptional quality of cut.

NOTHING RUNS LIKE A DEERE®



Polfus Golf & Turf

12040 Point Douglas Drive S.
Hastings, MN 55033

Call for a Demonstration

Phone: (612) 437-7747 or Fax: (612) 437-3483