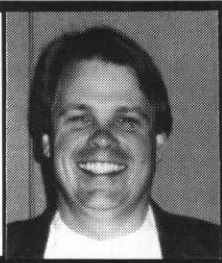


# MGCSA BOARD HIGHLIGHTS

By Patrick A. Walton, CGCS  
MGCSA Secretary



The MGCSA Board of Director's met on March 10 following the excellent March Mini-Seminar. Treasurer Tom Johnson is actively researching options on investments for our Association's Research Trust Fund. Tom has researched a number of options and made the recommendation that we continue to invest in Certificates of Deposit.

After discussion, the Board of Directors agreed with Treasurer Johnson and we will continue to invest in C.D.'s under the Treasurer's guidance. Following the Treasurer's Report, there was a discussion on the activities of the Minnesota Turf & Grounds Foundation. The Board decided to review the actions and accomplishments again at the September Board Meeting. It was the feeling of the Board that this is really the first year the MTGF has had any funds available to them, and let's wait and see what they accomplish.

*Hole Notes* Editor Rob Panuska reported, as always, articles are needed for the magazine.

Dave Sime, Arrangements Chairman, is working hard to find meeting sites for 1997. April, May and October meetings are going to be non-golfing events stressing education, while our June, July, August and September meetings will follow their current format.

Tom Parent and Steve Young are focusing their attention on the MTGF Annual Conference. Any input you have on speakers or topics would be greatly appreciated.

Research Chairman Jim Nicol reported that the Research Committee will be having its first meeting April 1. Jim Nicol also reported that unfortunately Dr. Phil Larson can not continue the research that the MGCSA funded last year.

The Environmental Committee held its second meeting of the year last month and is looking into updating the MGCSA Environmental Handbook.

The Scholarship Committee, headed by Chairman John Queensland, met on February 28 at Midland Hills. The committee is working on continuing the Legacy Scholarships that were created last year and also the possibility of funding for Turf Scholarships from the Minnesota Turf & Grounds Foundation.

## MTGF UPDATE

The Board of Directors of the MTGF met on February 19, 1997. The main concern among the director's was the lack of input from the allied associations regarding topics of interest and possible speakers for the Annual MTGF Conference & Trade Show in December. If any of you have a particular topic or speaker you would like to hear, please contact Steve Young or Tom Parent as soon as possible. It

may seem like December is a long way away but it is very important that speaker contacts are made as far in advance as possible.

The MTGF Board of Directors is also working hard on promoting the Annual MTGF Expo, which will be held August 6-7 at the Resurrection Cemetery in Mendota Heights. Personally, I am still looking for volunteers to serve on the recently formed MTGF Research and Outreach and Scholarship Committee. If you are interested in serving on this committee, please give me a call at 612/478-2179.

The MGA recently held a reception on February 4th at the Lexington Restaurant in St. Paul regarding the Rosemount Project. The reception was attended by many MGCSA and MTGF representatives. The MGA is currently in the active fundraising stage of the project. They are currently trying to gain support (cash) for the project from the Minnesota Amateur Athletic Fund.

Sincerely,  
Patrick A. Walton, CGCS  
MGCSA Secretary

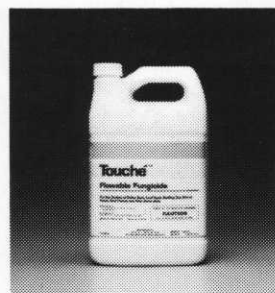
## A Reminder From The Internal Revenue Service

"While contributions or gifts to the Minnesota Golf Course Superintendents' Association are not tax deductible as charitable contributions for Federal income tax purposes, they may be tax deductible under other provisions of the Internal Revenue Code."

# LESCO™

## LEADERS IN TURF FUNGICIDES

- **Touché™** provides long lasting control of many major turf diseases including leaf spot, dollar spot and brown patch.
- **LESCO** offers a wide range of products for turf and ornamental disease control. Available in sprayable, granular and fertilizer combination options.



(800) 321-5325 • Fax (800) 673-3030

LESCO and Touché are trademarks of LESCO, Inc.



# New HERITAGE™ Fungicide

## CHANGING THE COURSE OF DISEASE CONTROL

- Effective against 18 of the toughest turfgrass diseases
- Controls brown patch, Pythium, take-all patch, summer patch, anthracnose and snow mold
- Preventative and curative activity
- Low rates, extended spray intervals
- Novel mode of action

- Low risk toxicological profile
- Reduced risk to environmental resources

For more information contact your authorized Zeneca distributor or call Zeneca Professional Products Toll Free at 1-888-617-7690.

**ZENECA** Professional Products

Always read and follow label directions carefully.  
HERITAGE™ is a trademark of a Zeneca Group Company. ©1997. Zeneca Inc.

# GCSAA Modifies Alternative Spikes Position

Citing a golf industry void of a complete and comprehensive database of information on alternative footwear options to metal spikes, the Golf Course Superintendents Association of America (GCSAA) board of directors modified its position on the issue.

The action was taken Feb. 3, in a board meeting prior to the start of GCSAA's 68th International Golf Course Conference and Show (Feb. 6-12) at the Las Vegas Convention Center.

Previously, the GCSAA "alternative spikes" position recommended individual courses adopt a policy that best served their respective operations. However, a GCSAA ad hoc committee comprised of Immediate Past President Gary Grigg, CGCS at Royal Poinciana Golf Club, Naples, Fla., and directors Dave Fearis, CGCS at Blue Hills Country Club, Kansas City, Mo., and Tommy Witt, CGCS at Wynstone Golf Club, North Barrington, Ill., late last year began to examine a position on alternative spikes based on scientific/agronomic data.

Upon review of that information, the committee believed the GCSAA's policy should emphasize its role in accumulating and disseminating relevant and useful information to the golf industry to assist in the decision-making process. GCSAA has already begun to collect data from shoe manufacturers, scientific/agronomic research, perception surveys from various organizations and policies of allied golf associations.

"There is an obvious trend towards a conversion from metal to alternative spikes," GCSAA President Bruce R. Williams, CGCS, said. "However, we owe the membership a policy decision that is based on complete and accurate information. Our new policy is four-fold: 1. Present complete, relevant and useful information; 2. Suggest that individual courses use the input of the golf course superintendent in establishing a policy; 3. Reaffirm that GCSAA will remain attuned to the issue by identifying and encouraging continued research and 4. Encourage golf facilities to examine the merits of using GCSAA resources to examine their current position."

Work has also begun on a white paper that will provide background information regarding the use of alternative spikes. This document will examine agronomic issues (plant health, aesthetics, soil) and golfer issues (slippage, comfort, putting quality), current trends in the industry (course conversion rate, professional tour player opinions, allied association policy, legal precedence) and GCSAA's strategy in assisting facility decisions and educating/informing influential golfers/employers.

Two white papers will be presented to the board for additional action this spring. It is anticipated that complete/comprehensive information packets will be available for distribution June 1.

## GCSAA Position Statement Regarding The Use Of Alternative Footwear Options to Metal Spikes

The GCSAA recognizes there is considerable information establishing the benefits of alternatives to metal spikes. It is GCSAA's position that facilities should consider requiring the use of these alternatives. GCSAA recognizes that many factors affect the decision to mandate alternatives to metal spikes. These factors may include any or all of the following:

- Design of the golf course
- Quality expectations of golfers
- Turfgrass species and varieties used on the golf course
- Amount of foot traffic on the golf course
- Perception of golfers
- Region of the country
- Climate
- Maintenance levels and budgets
- Level of ability of golfers
- Liability or legal issues

While it is the responsibility of each golf course to determine what policy is best for its facility, GCSAA is committed to facilitating the development of these policies through the accumulation and dissemination of information. As a result, it is in the best interest of facilities to consult with the golf course superintendent before making a decision. GCSAA will serve as a comprehensive source of information in the following areas:

- Agronomic questions
- Legal questions
- Golfers' perceptions
- Impacts on pliability
- Financial impacts
- Golf course aesthetics
- Anecdotal information

Where valid information exists in these areas, GCSAA will collect and make it available through its various resources to its members and the industry. Where information does not exist in a particular area, GCSAA will identify and encourage research to obtain this information.



**A new foundation  
for your fungicide program.**

# **NOW! BIOLOGICAL POWER!**

## **The strongest IPM program begins early in the spring with BIO-TREK 22G™**

Don't let this summer's onset of plant disease attack your unprotected turf! *First thing in the Spring* put down BIO-TREK 22G and build a strong foundation for your entire fungicide program.

***It's new. It's biological. And it's effective.***

BIO-TREK 22G is the first biological fungicide approved for turf. It will help you get control of common fungus problems *before* they have a chance to wage a major attack on your turf. Because it's biological, BIO-TREK 22G is safe for use all around the golf course, even near water and wildlife.

*For more information, contact  
your Wilbur-Ellis representative  
or your Bio-Trek 22G distributor.*



**WILBUR-ELLIS**

IDEAS TO GROW WITH®

**FOR MORE INFORMATION, CALL:**

**CHRIS QUINLAN • (612) 484-8200 or (612) 309-6424**

Golf Course Photo by John R. Johnson

# GCSAA Annual Election Results Announced

The election of officers, the addition of a new director and a revision in membership dues head the list of actions from the GCSAA Annual Meeting (Feb. 11), held in conjunction with the 68th International Golf Course Conference & Show, Feb. 6-12 in Las Vegas.

Paul S. McGinnis, CGCS at Moon Valley Country Club in Phoenix, Ariz., succeeds Bruce R. Williams, CGCS at Bob O'Link Golf Club, Highland Park, Ill. (moves to The Los Angeles Country Club, April 1), as GCSAA president. Williams will serve a one-year term as immediate past president. George Renault III, CGCS at Burning Tree Club in Bethesda, Md., becomes vice president after serving last year as secretary/treasurer. Dave Fearis, CGCS at Blue Hills Country Club in Kansas City, Mo., was elected secretary/treasurer. McGinnis and Renault ran unopposed and were elected by acclamation. Fearis defeated R. Scott Woodhead, CGCS at Valley View Golf Club in Bozeman, Mont. Woodhead, however, remains on the board with one year remaining in his two-year director term.

Gary T. Grigg, CGCS at Royal Poinciana Country Club in Naples, Fla., retires from the board after serving as immediate past president in 1996-97. Grigg's departure from the board (filled by Williams) opened a position for Samuel R. Snyder VII, CGCS at Hercules Country Club in Wilmington, Del., who defeated Jon D. Maddern, CGCS at Elk Ridge Golf Course in Gaylord, Mich. Michael Wallace, CGCS at Hop Meadow Country Club in Simsbury, Conn., and Tommy D. Witt, CGCS at Wynstone Golf Club in North Barrington, Ill., were re-elected as directors, while Ken

Mangum, CGCS at Atlanta (Ga.) Athletic Club has one year left on his two-year director term assumed last year.

Voters also overwhelmingly passed an increase in Class A, B and C dues by a nearly 4 to 1 margin (4,732 to 1,318; or 78 percent of the vote). Dues for Class A and B members will increase from \$210 to \$250, while Class C dues

*(Continued on Page 31)*

## GCSAA in Las Vegas—

*(Continued from Page 11)*

• A GCSAA Media Room, an added feature to the 1997 conference, included news conferences with the Robert Trent Jones family, USGA President Judy Bell, and GCSAA's 1997 Old Tom Morris recipient Ben Crenshaw; the opportunity for exhibiting companies to conduct media conferences and release new product information; and a working area for more than 88 registered media.

"GCSAA works throughout the year to deliver quality educational programs and professional development opportunities to the GCSAA membership," said GCSAA President Paul S. McGinnis, CGCS. "With a record of more than 22,000 attending the 1997 show in Las Vegas, we're pleased with the results and look ahead to achieving new levels of excellence as we plan for 1998."

GCSAA's 69th International Golf Course Conference & Show is scheduled for Feb. 2-8, 1998 at the Anaheim Convention Center in Anaheim, Calif.

## Don't put up with unplanned water hazards...

10 times faster than other portable pumps, the self-priming, lightweight **BUNKER-PUMPER** can pump **280 GPM** right down to the sand. Just throw it in a flooded bunker, ditch, or low lying area and let it pump all of the water out of the way. Bunker Pumper saves valuable manpower for the important projects that need to be completed on the course and is absolutely necessary after a heavy rain during your busy season. **OTTERBINE®** --- offering another quality water management product for your golf course.

**"The pump has paid for itself in what I have saved in labor costs"** -John Chassard, Lehigh C.C.

- Moves 280 GPM
- 10 times faster than traditional trash pumps
- Gets sand traps and low lying areas back into play quickly!
- Reliable Briggs & Stratton Engine

**MTI**

DISTRIBUTING CO. 14900 Twenty-first Avenue North • Plymouth, Minnesota 55447-4655 • Phone (612) 475-2200



*Before*



*4 Minutes Later...*



# MEMBERSHIP REPORT

NEW MEMBERS: FEBRUARY 1997

	Class
<b>Tom Lundgren</b> Kate Haven Golf ..... A 13930 Frazier St. NE, Ham Lake 55014 W: 612-786-2945	
<b>Edwin Lahr</b> Howard Lake Greens ..... A 5317 Lakeside Ave. N., Minneapolis 55429 W: 320-543-3330	
<b>Bradley Rosten</b> Pezhekee Golf Course ..... A 720 Hwy. 28W, Glenwood 56334 W: 320-634-4501	
<b>Sol Bernhardt</b> Cokato Town and Country Club ..... A 895 Johnson Ave. S., Cokato 55321 W: 320-286-2007	
<b>Jack E. Krech</b> St. James Country Club ..... A 1128 Armstrong Blvd. N., St. James 56081 W: 507-379-3849	
<b>Toby Weibye</b> Nordic Trails Golf Course ..... B 621½ Broadway, Apt. 1, Alexandria 56308 W: 320-762-5420	
<b>Michael Newman</b> Eveleth Municipal Golf Club ..... C 701 Grant Ave., Eveleth 55734 W: 218-744-4329	
<b>James Temple</b> Minnesota Valley Country Club ..... C 6300 Auto Club Rd, Bloomington 55438 W: 612-884-8733	
<b>Donnacha O'Connor</b> Wayzata Country Club ..... C 300 E. 4th St., #722, St. Paul 55101 W: 612-473-6955	
<b>Adam Gabel</b> Penn State University ..... Student 2814 Curtis Lane, Lansdale, PA 19446 W: 814-862-0213	
<b>Arik Hemquist</b> Madden's on Gull Lake ..... Student 4620 Brentwood Dr., Baxter 56425 W: 218-829-2811	
<b>Greg Austin</b> Somerset Country Club ..... Student 7300 Bristol Village Dr., #306, Bloomington 55438 W: 612-457-1161	
<b>Charles Padula</b> Central Rivers ..... F 1515 45th Ave. N., Minneapolis 55412 W: 612-444-5561	
<b>Darla Hansen</b> ..... F Construction Materials, Inc. 10743 185th Ave. S.E., Big Lake 55309 W: 612-929-0431	

## RECLASSIFICATIONS

<b>Dennis Schoenfeldt</b> ..... A to AA
<b>Frank Hoffman</b> Minnewaska Golf Club ..... Student to B
<b>Troy Johnson</b> Hudson C.C. .... B to A
<b>Scott Melby</b> Governor's Mansion ..... C to Associate
<b>Mark Kruse</b> Shoreland C.C. .... C to B
<b>Darryl DeGrio</b> Inver Wood G.C. .... Student to D

*Steve Shumansky,  
MGCSA Membership Chairman*



## TeeTime

Fertilizer with  
**NUTRALENE®**

the professional's  
partner™

The  Andersons

## TeeTime

Fertilizer with  
**DIMENSION®**

the professional's  
partner™

The  Andersons

## TeeTime

**FERTILIZER**

the professional's  
partner™

The  Andersons

# Goodness By Design. Effective Every Time.

The Andersons' full range of high-performance Tee Time fertilizer formulas were designed to help you meet your turf care needs throughout the seasons and whatever your soil conditions. Produced using our unique, mini-granular sizing process, The Andersons' fertilizers penetrate quickly and deeply to deliver just the right payload of balanced nutrients. Find out more today.

# NST

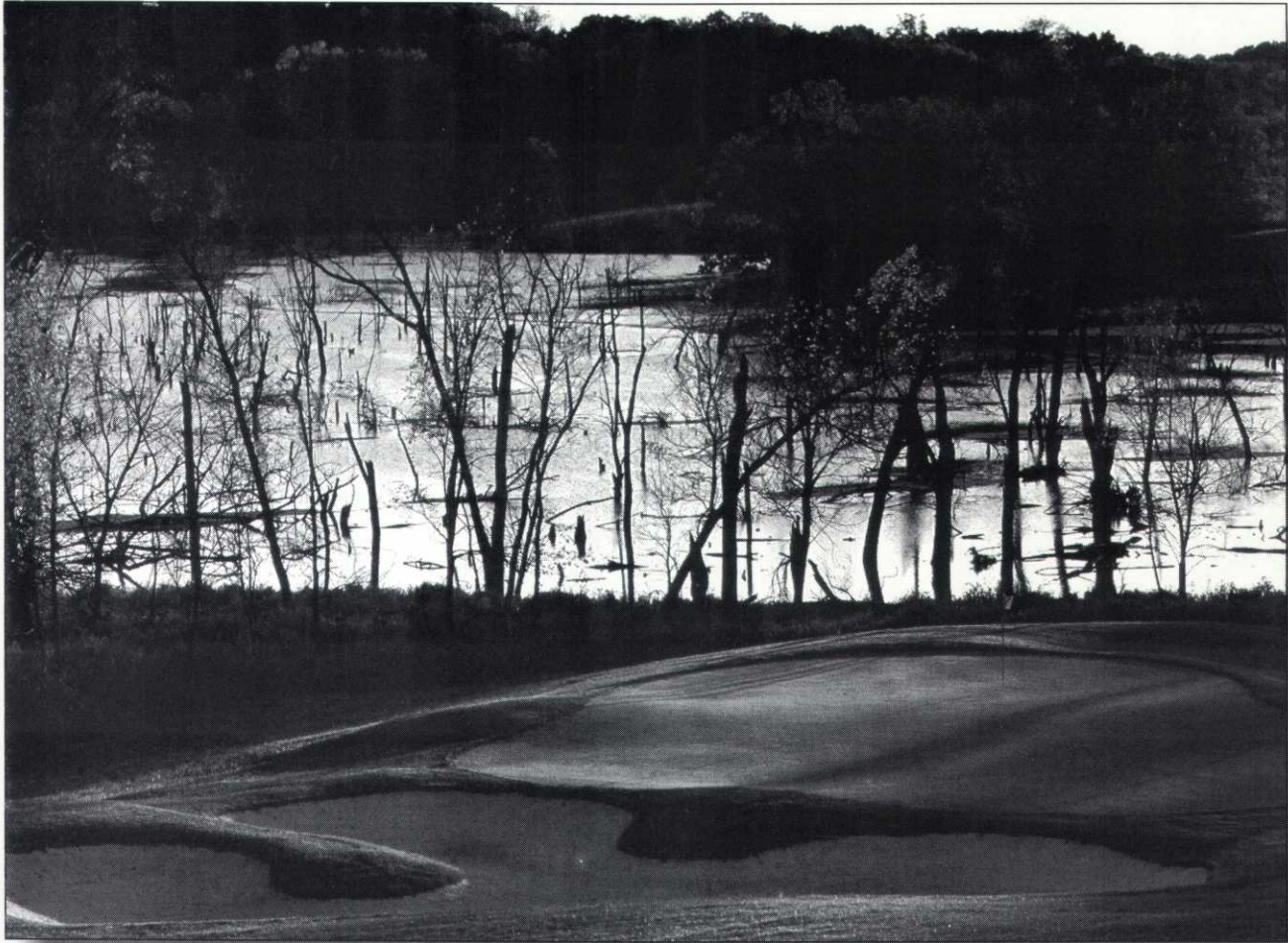
NORTH STAR TURF, INC.

3080 Centerville Road  
St. Paul, MN 55117

(612) 484-8411  
(800) 592-9513

The  Andersons

# When you need **Top Dressing Material...**



## you need Plaisted.

Plaisted Companies is the one call for all your golf course materials, including top dressing blends to meet your most demanding specifications.



P.O. Box 332 • 11555 205th Avenue N.W. • Elk River, MN 55330

**612-441-1100**

---

Construction Materials • Top Dressing Blends • Bunker Sand • Carpath Aggregate • Drantile & Decorative Rock

Photo courtesy of Burian Photography®



REPRESENTING THE MGCSA at the 1997 Great Minnesota Golf Show at the Metrodome are, from left, Jeff Backstrom, Cannon Golf Club; James Gardner, The Wilds Golf Club, and Steve Young, Plaisted Companies, Inc.



**Design, Installation &  
Care of Your Flower Beds  
Landscapes By Sam  
Phone/Fax 933-4638**

We recommend the Bayleton 25 Mini.

- 60.5 Pound Drum
- 88 Water-Soluble Tossacks (That's 5.5 Cases)
- One Bayleton Mini = 22 Acres @ 1 Ounce
- One Bayleton Mini = 11 Acres @ 2 Ounces
- Durable Polyurethane Container
- Recyclable
- Reusable
- Easily Maneuverable, Mobile Container
- No Container Disposal
- No Pumps to Fail
- No Meters to Second-Guess
- Accurate Delivery of Product
- Proven Bayleton Performance

And we think the facts speak for themselves.

## JOB OPENING

To: Members/MGCSA

Eagle Trace Golfers Club is now accepting applications for the position of **Equipment Technician/Crew Leader**.

Eagle Trace is an 18-hole championship course, located within Clearwater Estates, a 300-acre residential golf community along the Mississippi River.

Duties include:

- Preventative maintenance, repairs & adjustments to all equipment
- Golf Cart Fleet Maintenance
- Associated Recordkeeping
- Maintain a well-organized and safe service area
- Supervise staff members as directed
- Assist in all grounds maintenance
- Must be able to work independently and with supervision

Areas of knowledge:

- Must possess mechanical ability
- Small engine background
- Welding background a plus

Clearwater Estates/Eagle Trace is located in Clearwater, Minn. — approx. 45 minutes northwest of Minneapolis on I-94, near the city of St. Cloud.

Please send resumes or fill out application at:

**Eagle Trace Golfers Club**  
attn: TIM NELSON, Sup't.  
P.O. Box 370 — 1100 Main St.  
Clearwater, MN 55320

FOR A LIMITED  
TIME, ORDER A  
BAYLETON MINI  
AND RECEIVE A  
FREE JACKET!



7728 Commerce Circle  
Greenfield, MN 55373  
1.612.477.5885 Office  
1.800.925.8873  
1.612.477.6511 Fax



# CLASSIFIED ADS

## FOR SALE

- 40 Toro VT3 Controllers .....\$400
- 6 Toro VT4 Controllers .....\$425
- 1 VT3 Computer Central.....\$800
- 1 LTC Controller.....\$600

Computer includes screen, printer and computer.  
All controllers include steel pedestal and control panel.

Contact: TOM FISCHER  
Edinburgh USA

**(612) 424-8756**

## FOR SALE

Cushman Mounted Topdresser  
Good Shape — Ready to Use.  
\$850

Contact: KELLY JOHNSON  
Oneka Ridge GC

**(612) 426-6889**

## FOR SALE

- (3) 21-inch Toro Walking Greens Mowers — Series 5 with Honda Engine.
- (1) Vicon Spreader
- Jacobsen 3-point Aerifier

Contact: MIKE DAVIES  
Superior National GC

**(218) 663-7865**

## FOR SALE

1995 Deep-Tine Aerifier Soil Reliever— Model 80  
3-pt. PTO Driven Tractor Mount  
Brand New ★ Excellent Condition.....\$16,000

National 5-Gang Reel Mower  
PTO Driven ★ Excellent Condition.....\$2,000

Contact: James Gardner, CGCS  
The Wilds Golf Club

**(612) 496-0037**

## FOR SALE

Case 1845C Skid Steer Loader  
341 Hours. Like New.  
Used during the installation of drain tile  
in new greens construction.  
Asking \$20,000.

Also available: Trencher Attachment.

Contact: PAUL ECKHOLM, CGCS  
Heritage Links Golf Club

**(612) 440-6494**

## FOR SALE

1991 Toro Fairway Aerator — Model 9500  
Used one season. Price is negotiable.

Contact: KEVIN CLUNIS  
St. Croix National Golf Club

**(715) 247-4260**

## FOR SALE

- (26) VT Controllers without pedestals .....\$300/per
- 1989 Sandpro 2200 hrs., 14hp Kohler, front wheel lock out, hydraulic front blade .....\$1,800
- 1985 National 60" cut 10hp Kawasaki .....\$600
- 1990 Kubota F2000 60" cutting deck with 1,125 hrs, 4 post roll cage.....7,500
- Jac Sweeper Model 154 Older model, 12 hp. Kohler, good running condition .....1,000
- 5' x 40' Flat bridge. Steel framed with wood decking  
Best Offer

All equipment "as is."

Contact: GREG SPENCER  
Brookview Golf Course

**(612) 512-2353**

## FOR SALE

1977 Cushman Truckster  
\$600 or best offer.

1984 Toro Groundsmaster 72 w/4 Post Rops.  
Good Condition.  
\$3,500 or best offer.

Contact: RICK  
Tartan Park GC

**(612) 736-8797**

## FOR SALE

- 1973 Toro Parkmaster 5-gang mower with hydraulics ....\$2,500
- 1956 Toro General 5-gang mower .....\$1,200
- 1973 Toro Spartan 5-gang Pull-behind unit .....\$1,000
- 1976 Toro Greensmaster 3 (reconditioned).  
Three quick adjust Green-to-Tee height cutting units.....\$1,000
- Wittek Model W87 Ball Washer, used 2 years.....\$900/bo.

Contact: CHARLIE POOCH  
Les Bolstad U of M Golf Course

**(612) 627-4138**

# 1996 Turfgrass Performance Review for Minnesota

By Troy D. Carson, Donald B. White and Brad Pedersen  
University of Minnesota

The University of Minnesota participated in two continuing National Turfgrass Evaluation Program (NTEP) tests during 1996.

NTEP was established by the USDA in 1980 as a means to provide breeders, seed producers, turf professionals and consumers with an objective evaluation of commercially available turfgrasses. Each trial is performed at up to 40 sites across the country. Tests have been performed on *Poa pratensis* (Kentucky bluegrass), *Lolium perenne* (perennial ryegrass), *Festuca arundinacea* (turf-type tall fescue), *F. rubra rubra* (creeping red fescue), *F. rubra commutata* (chewings fescue), *F. longifolia* (hard fescue), and *F. ovina* (sheeps fescue), *Buchloe dactyloids* (buffalograss), *Cynodon dactylon* (Bermudagrass), *Zoysia matrella* var. *japonica* (zoysiagrass) and *Agrostis* spp (bentgrasses). Each site selects the management program to be used setting the fertility rate, mowing height and irrigation regime that relate to trial standards, and these cultural practices are included in each NTEP report.

Including the two trials conducted during 1996, the University of Minnesota has participated in many trials over the last 26 years that NTEP has been in existence. These trials provide valuable information for those involved in turfgrass management in Minnesota and other northern regions. One unique and important aspect of our site is that it is generally the coldest in the nation and provides the best information on the winter hardiness of varieties.

We are currently evaluating the 1993 Bentgrass Green Test on native soil and the 1995 Kentucky Bluegrass Test (med.-high maintenance). Each test is evaluated for five years after seeding. The 1996 growing season was the first full year of evaluations for the Kentucky bluegrasses and the third year of evaluations for the bentgrasses.

Each test is evaluated monthly for up to 37 characteristics. Performance ratings conducted here include Overall Quality (monthly during growing season), Spring Green-up, Genetic Color, Leaf Texture, Seedling Vigor) only seeding year), Spring, Summer and Fall Density, Spring, Summer and Fall Percent Living Ground Cover, Winter Kill and Disease Incidence (especially dollar spot for the bentgrass test). Ratings are done on a scale of 0-9 with 9 = ideal turf.

As you examine the rating tables that follow, it is helpful to know that many of the cultivars listed have not been given a name yet. Those that are not named generally have a number or a letter and number combination to designate one cultivar from another. If you are interested in an unnamed cultivar, watch for the experimental designation to follow the name of new cultivars in coming advertisements. Also note in the bentgrass table that many newly named cultivars are followed by the experimental name in parenthesis.

## 1993 Bentgrass Green Test

The bentgrass test was seeded in the fall of 1993 and data

has been collected over the last three years. Only 1996 data are presented here. The initial planting included 28 different varieties, but data is now collected on only 27. The variety Tendez, a colonial bentgrass, did not survive at the green height of cut and was quickly invaded by the surrounding creeping bentgrass and *Poa annua* present as seed in the soil.

Table 1 – 1996 Bentgrass Mean Quality

Name	Quality Mean
Penn A-1 (A-1).....	6.3
Penn G-2 (G-2).....	6.3
Cato.....	6.0
Penn A-4 (A-4).....	5.9
Penn G-6 (G-6).....	5.8
Loft's L-93 (L-93).....	5.8
BAR WS 42102.....	5.4
Providence.....	5.4
Trueline.....	5.4
Imperial (Syn 92-5-93).....	5.3
ISI-Ap-89150.....	5.3
Pennlinks.....	5.2
MSUEB.....	5.2
SR 1020.....	5.2
Syn 92-2-93.....	5.1
Century (Syn 92-1-93).....	5.1
Regent.....	5.0
PRO/CUP.....	5.0
Lopez.....	5.0
Penncross.....	4.9
Mariner (Synn-1-88).....	4.8
DG-P.....	4.7
Seaside.....	4.6
Crenshaw.....	4.6
18th Green.....	4.6
LSD Value*.....	0.9

\*To determine statistical differences among entries, subtract one entry's mean from another entry's mean. Statistical differences occur when this value is larger than the corresponding LSD Value (LSD @ 0.05).

Of all the categories rated, only one, Overall Quality, exhibited any significant differences. Also, one variety did stand out with dollar spot.

The two top rated bentgrasses for Overall Quality in 1996 were Penn A-1 and Penn G-2. However, as you can see from Table 1, neither was significantly different from Cato, Penn A-4, Penn G-6, Loft's L-93, Providence, BAR WS 42102, Trueline or Southshore.

One other rating that stood out was the dollar spot rating. Although most exhibited substantial dollar spot resistance, Penn A-1 received a perfect rating of 9 over all

(Continued on Page 32)