

GCSAA's 68th International Golf Show Smashes Variety of Records in Las Vegas

A record 22,227 golf course management industry representatives attended the GCSAA's 68th International Golf Course Conference & Show Feb. 6-12 in Las Vegas, surpassing the previous record of 21,784 set last year in Orlando, Fla.

GCSAA's 68th annual event included 100 educational seminars, sessions and forums. Attending golf course superintendents, course officials, turfgrass professionals, educators, suppliers and media representatives also were able to see the latest in golf course management products and services at the three-day trade show.

Other records for the week;

- Registrants for the week's educational seminars totaled more than 5,300, breaking the 1996 record of 4,978.

- Total exhibit space at the trade show was 221,400 square feet occupied by 685 exhibiting companies, 12,530 square feet more than the 1996 record.

- The final tally of international attendees was 2,340, representing 64 countries. The previous record was 1,791, also set in 1996 in Orlando.

Other highlights of the week:

- Paul S. McGinnis, CGCS, was elected president of GCSAA for 1997-78 at the association's annual meeting. George Renault III, CGCS, and David W. Fearis, CGCS, were elected vice president and secretary/treasurer, respectively.

- Retired Navy Capt. James A. (Jim) Lovell Jr., commander of the Apollo 13 space mission, delivered the keynote speech at the Opening Session.

- Eleanor Clift and Fred Barnes of the McLaughlin Group, the Washington D.C.-based group known for spirited discussions of the country's hottest issues, and Kim A. Richards of The Athens group, a golf course and residential developer, presented a lively debate on government and environmental issues affecting the golf industry.

- Ben Crenshaw, one of the PGA Tour's most popular and talented players, was presented with GCSAA's highest honor, the Old Tom Morris Award, at the gala '97 banquet that highlighted the week's events. After the banquet, world-renowned singer Kenny Loggins provided the evening's entertainment.

- Key sessions by the American Society of Golf Course Architects, the American Zoy-

siagrass Association, the Club Managers Association of America, the National Golf Course Owners Association, the National Golf Foundation and the United States Golf Association Green Section rounded out the conference events.

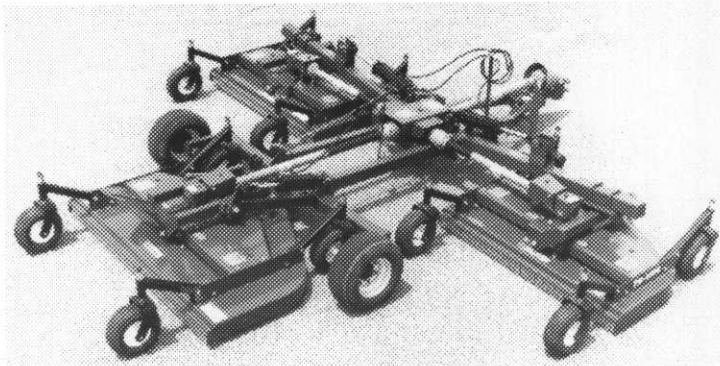
(Continued on Page 25)

BEST TURF MOWERS FOR A QUALITY CUT.

The Bush Hog TD Series Tri-Deck Finishing Mowers are available in 15 or 17-foot cutting widths and are ideal for sod growers, golf courses, land owners, municipalities and recreational sites.

These mowers are designed for precise cutting on even or uneven terrain...they feature a 30° up and 10° down wing flex and are rated for 40 and 45 minimum tractor horsepower. Gearbox rpm is 540, and deck construction is rugged, 7-gauge steel. Blade tip speeds are over 15,500 fpm, to give you finer, cleaner cutting on each pass. Wing decks flex side to side and front to rear, for closer mowing.

Come in today and see why Bush Hog Tri-Deck Finishing Mowers are clearly your best choice for quality.



BUSH HOG®

DIVISION OF  ALLIED PRODUCTS CORPORATION

Building the Legend.

MTI DISTRIBUTING CO. 

PLYMOUTH HEADQUARTERS
14900 Twenty-first Avenue North
Plymouth, Minnesota 55447-4655

1-800-362-3665 • 612-475-2200 • FAX: 612-473-4397

FARGO BRANCH
4310 Main Avenue
Fargo, North Dakota 58104

1-800-782-1031 • 701-281-0775

We're Right on Par for What You Need!

Applications for All Areas of the Game.

Soil Solutions!

from *Floratine*

CalpHlex-

The Economical, Highly Soluble Calcium Chelate for Managing:

- Calcium Deficiency
- Magnesium Excess
- pH Balance
- Sodium Build-Up

Maxiplex-

The Concentrated Liquid Humic Acid for Better Management of:

- Compaction
- Nutrient Tie-Up
- Leaching
- Hot Spots

Floratine Products Group
129 S Main, Collierville, TN 38017
(901) 853-2898

FLORATINE PRODUCTS

#1 in BioStimulants



JUST FOR THE HEALTH OF IT!

*ASTRON PLUS *PER "4" MAX PLUS
*KNIFE PLUS *RENAISSANCE

and other patented hormone balanced auxiliary nutrient compounds promoting improvements in turfgrass:

- *Root Development
- *Stress Resistance & Recovery
- *Health & Quality

Decidedly Different in Design & Performance

Aqua-Vive

Biological Water Clarifier



- Eliminates Murky Water
- Eliminates Odors
- Controls Algae Bloom
- Removes Surface Scum

PROUD

to be a member



Platinum Tee Club

THANKS

to our many turfgrass management friends

FLORATINE

Creative Solutions for Turfgrass Management



179 So. Main/Collierville, TN 38017
(901) 853-2898

For More Information Call Dan or Rick at 612-934-1205

Superior Tech Products 80 W 78th St, Suite 135 Chanhassen, MN 55317

MGCSA Scholarship Fund Now Accepting Applications for 1997 Scholarship Year

The MGCSA Scholarship Fund, originated in 1987, now is taking applications for the 1997 scholarship year.

The scholarship, is an annual grant awarded to candidates interested in golf course management as a career, have high scholastic capabilities and have superior performance as an employee of a golf course. Students meeting the following criteria are encouraged to apply.

1. Candidate must be a resident of Minnesota or employed by a Minnesota Golf Course Superintendents' Association member superintendent.
2. Candidate must: (a) Have completed his or her first year in a two-year turfgrass technical program. (b) completed the second or third year of a four-year program with major emphasis in turf management.
3. Fill out the application form completely and return with transcripts by July 1, 1997. Also include two current head and shoulder photos.
4. Have both Advisor and Superintendent return their reports postmarked by July 1, 1997.

1997 MGCSA Scholarship Committee

John Queensland: Chair	
Cedar River CC	(507) 582-3585
Charlie Pooch	
Les Bolstad University of Minnesota GC	(612) 627-4138
Richard Grundstrom	
Indian Hills CC	(612) 770-3091
Jon Almquist	
MTI Distributing Co.	(612) 475-2200 ext. 8230
Dave Zimmer	
Chisago Lakes Golf Estates	(612) 257-8734
Dale Wysocki	
Minnesota Vikings Football Club	(612) 828-6500
Steve Garske	
Par Aide Products Co.	(612) 779-9851
Dan Miller	
North Star Turf	(612) 484-8411
Tom Johnson	
New Richmond GC.....	(715) 246-4850
Jeff Churchill	
North Star Turf	(612) 484-8411
Larry Mueller	
Minnesota Valley CC	(612) 884-8733

HEDBERG

AGGREGATES

"Built on Service"
For all Your Landscape Hardgoods

Washed Sand & Gravel, Rip-Rap,
Boulders, Decorative Rock, Mulches.



Free Installation Training

Complete Line of NDS Drainage Products
Concrete Retaining Walls
Concrete Pavers
Complete Line of Landscape
Site Furnishings
Largest Natural Stone Inventory
in Minnesota

INTERLOCK
CONCRETE PRODUCTS INC.



2 Convenient Locations

Plymouth
1205 Nathan Lane N.
545-4400

Rosemount
4375-170th St. W.
423-5320

Same Day Delivery

We can tell you
what to plant,
where to plant,
when to plant.

**Guess that makes us
plant managers.**

Whatever your needs for your golf course, Peterson Seed can help. They can supply grass seed for everything from tees and greens to fairways and roughs. Whether you're building a new course or renovating an existing one, Peterson Seed offers expert advice and dependable products.

©1997 Peterson Seed Company, Inc.

TURF SEED



PETERSON SEED CO.
Helping your seed business grow.

1-800-328-5898

Have service and support. Will travel.

You're never far from expert service and support in the Twin Cities metro area. In fact, we'll bring everything right to your course. Our brand-new customer support truck has a full complement of genuine Jacobsen replacement parts and a broad selection of turf supplies and accessories. Plus, technical assistance that will keep your equipment up and running and your turf looking its best.

Jacobsen replacement parts are backed by an exclusive, 2-year *Cutting Edge Warranty*.™ And Jacobsen's *Orange Key Product Support System* features *Jacobsen Parts Xpress*, with a wide range of delivery options, including next-day delivery right to your door.

For service and support that's always ready to roll, call North Star Turf. Just say the word and we'll stop at your place with everything you need to keep your course in tip-top shape.

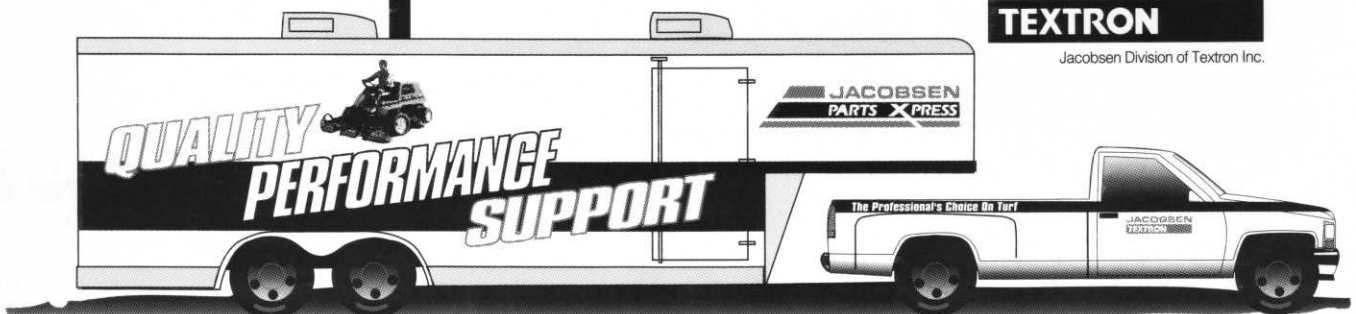


North Star Turf, Inc.
3080 Centerville Road
St. Paul, MN 55117
Phone: 612-484-8411/800-592-9513

THE PROFESSIONAL'S CHOICE ON TURF

**JACOBSEN
TEXTRON**

Jacobsen Division of Textron Inc.



Plan Your Certification Strategy

If you have the drive, ability, dedication and desire to achieve the highest level of excellence in the field of turf-grass management, GCSAA's certification program is for you. The sliding scale formula (shown to the right) outlines the varying entry requirements for application to the program.

Entry requirements for becoming an applicant in the certification program include current employment as a golf course superintendent, education, experience and GCSAA seminar and/or correspondence course CEUs (continuing education units). A golf course superintendent's level of post-secondary education determines the number of years' experience and the number of GCSAA seminar and/or correspondence course CEUs required to qualify as an applicant.

Once you have completed the requirements and submitted your application, you will have one year to pass the six-hour exam and the course evaluation, which is performed by two certified superintendents in your area.

If certification is in your future, begin now to earn the CEUs required for application. These tested CEUs must be earned from GCSAA's seminar curriculum and/or GCSAA-approved correspondence courses. CEUs are recorded in your member file and may be accumulated up to the date of application.

For any questions, or to request a comprehensive brochure on the certification program, contact Penny Mitchell, certification manager, at 913/832-4484, or e-mail to certify@gcsaa.org.

EDUCATION	+ EXPERIENCE AS GCS	+ CEUs*
Bachelor's degree in turf/plant science	3 years	4.2
Other bachelor's degree	5 years	7.0
Associate's degree in turf/plant science	5 years	7.0
Two-year turf certificate from a four-year school	5 years	7.0
Other associate's degree	7 years	9.8
Turf certificate (400-hour minimum)	7 years	9.8
No degree or recognized certificate	8 years	31.5

* GCSAA seminars and/or approved correspondence courses



Specializing in
**Re-Design & Construction
of Golf Courses**

MAIN OFFICE

2 South 2nd Avenue — Suite 120
Sauk Rapids, MN 56379

(320) 203-8451

MINNESOTA: 800-630-9298

FAX: (320) 253-4160

ELK RIVER OFFICE

817 Gates Ave., Elk River, MN 55330

(612) 441-5127

*Wherever
Golf is Played*

Golf Course Accessories

Ball Washers • Detergent • Mounting Pipes & Bases • Tee Signs • Spike Brushes • Hole Cutters • Flag Poles • Flags • Cups • Rakes • Benches • Tee Markers • Practice Greens Markers • Whipping Poles • Course Signage • And More.

Requested by players. Preferred by course professionals. Specified by designers and used with pride wherever golf is played.

Call your Par Aide dealer today for a FREE CATALOG, or call us for the dealer nearest you: 612-779-9851.

©1995, Par Aide Products Co. St. Paul, MN.

Q. Why FLOWTRONEX PSI?

A.

REASON #1.

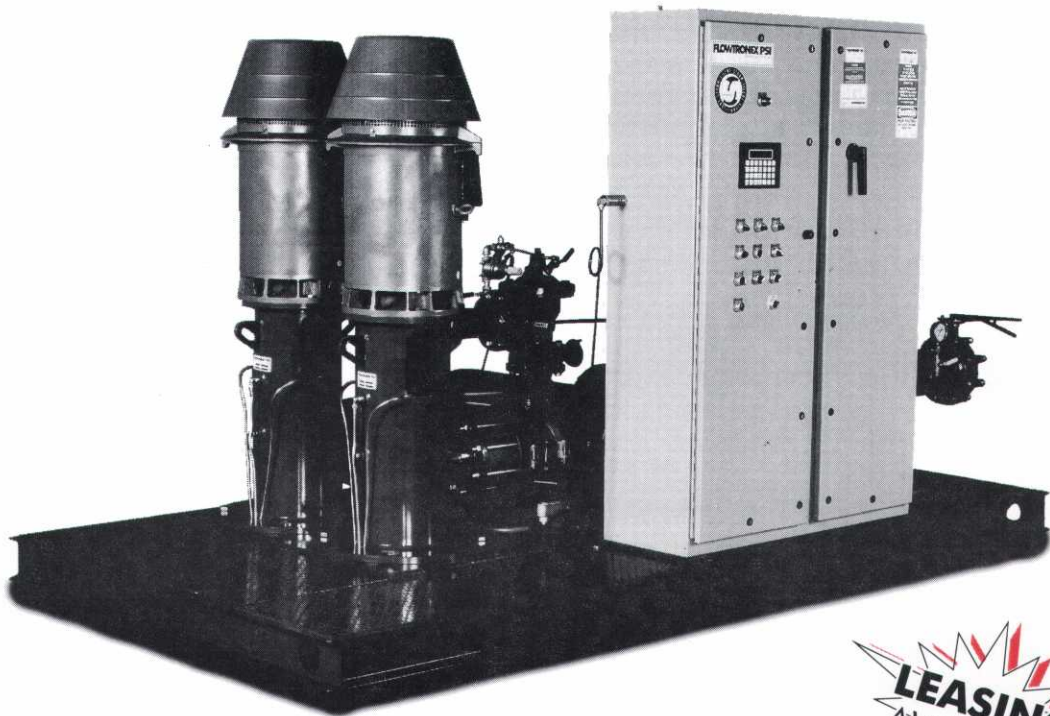
SUPERIOR PRODUCTION. The Silent Storm Variable Frequency Drive pump station combines efficiency and simplicity to save you up to 50% on your power bills and countless hours in maintenance to your pump station and entire irrigation system.

REASON #2.

INDUSTRY LEADERSHIP. FLOWTRONEX PSI is the world's largest pump station manufacturer, with more installations than all of our competitors combined.

REASON #3.

WORLDWIDE SERVICE. Using the revolutionary FlowNet service network, FLOWTRONEX PSI is able to provide 24-hour support and fast on-site service when you need it.



**LEASING
AVAILABLE**

Whatever your needs:

- Variable Frequency Drive or Conventional
- Vertical Turbine or Horizontal Centrifugal
- Prefabricated or Retrofit

MTI DISTRIBUTING CO.

FLOWTRONEX PSI
Pumping Systems

Contact: **Dean Chaltas** at
612-475-2200 Ext. 224

MTI Distributing Co.
14900 21st Ave. N.
Plymouth, MN 55447

Minnesota Department of Agriculture

1997 Waste Pesticide Collection Schedule

(Editor's Note: I visited with Stan Kaminski regarding additional details of the collection process. He wanted to stress several key factors regarding the disposal of these products.

1) You can deliver your material to ANY SITE. Just because there may not be a site in your county does not eliminate you from the program.

2) The cost is FREE up to 300 pounds of material. If you have more than 300# you need to call Stan at the Department of Agriculture. He will be glad to work with you on these larger amounts and it may not cost you anything.

3) Don't forget that other products may be able to be brought in, such as penta wood preservatives, dioxins, etc. Just call and ask if what you have can be disposed of.

4) No antifreeze or used oil can be disposed of at these collections.

5) These collections are paid for by a fee paid by the companies that produce pesticides, that is why there is no cost to you or your facility.

6) Since the program started six years ago, they will col-

lect their one millionth pound this year. He really wanted to stress that the goal of these collections is to get the unwanted and unusable materials disposed of properly and out of storage areas around the state.

* * * *

If you are storing insect or weed killers, fungicides or rodenticides after they are no longer useful, they become a threat to the environment. Old containers could leak or become broken, exposing people, livestock and the groundwater to the toxic effects of the concentrated pesticide. These collections are a great opportunity to rid your homeplace or worksite of these potential dangers. All pesticides are disposed of in an environmentally sound manner.

You can bring your pesticides to any one of many collection sites. Almost 40 sites have been set up to make participation convenient and easy. There is a site near you. Look over the schedule on the bottom of this page and select a site that works for you.

SPRING			
County—City	Location	Date	Site Hours
Jackson—Jackson	Central Co-op Soil Service	Mon., April 7	9am–1pm
Brown—Sleepy Eye	Farmers Elevator	Tues., April 8	9am–1pm
Redwood—Wabasso	Meadowland Co-op	Wed., April 9	9am–1pm
Cottonwood—Windom	Cenex Co-op	Thurs., April 10	9am–12pm
Watonwan—St. James	County Highway Garage	Fri., April 11	9am–12pm
SUMMER			
Hennepin—Bloomington	Problem Waste Drop-Off Center	Mon., June 23	9am–12pm
Carver—Chaska	County Highway Garage	Tues., June 24	9am–12pm
Dakota—Hampton	Cenex Co-op	Wed., June 25	9am–12pm
Washington—Lake Elmo	County Fairgrounds	Thurs., June 26	9am–12pm
Ramsey—St. Paul	State Highway Garage (Maryland)	Fri., June 27	9am–12pm
Anoka—St. Francis	Public Works Garage	Mon., June 30	9am–12pm
Scott—New Prague	Minnesota Valley Ag Co-op	Tues., July 1	9am–12pm
Sibley—Gaylord	County Highway Garage	Mon., July 7	9am–12pm
Nicollet—St. Peter	County Highway Garage	Tues., July 8	9am–12pm
LeSueur—LeCenter	County Highway Garage	Wed., July 9	9am–12pm
Waseca—New Richland	Town Hall	Thurs., July 10	9am–12pm
Blue Earth—Mapleton	Dill Company Warehouse	Fri., July 11	9am–12pm
Faribault—Bricelyn	County Highway Garage	Mon., July 14	9am–12pm
Fillmore—Preston	State Highway Garage	Tues., July 15	9am–12pm
Houston—Caledonia	County Fairgrounds	Wed., July 16	9am–12pm
Winona—Wilson	State Highway Garage	Thurs., July 17	9am–12pm
FALL			
Pipestone—Pipestone	Pipestone Ag Center	Mon., Sept. 8	9am–12pm
Lincoln—Ivanhoe	County Highway Garage	Tues., Sept. 9	9am–12pm
Murray—Chandler	Chandler Co-op	Wed., Sept. 10	9am–12pm
Rock—Luverne	Southwest Minn. (SWMN) Farmers Co-op	Thurs., Sept. 11	9am–12pm
Nobles—Worthington	Consolidate Co-op	Fri., Sept. 12	9am–12pm
Lyon—Tracy	Tracy-Garvin Farmers Co-op	Mon., Sept. 15	9am–12pm
Renville—Bird Island	County Highway Garage	Tues., Sept. 16	9am–12pm
Kandiyohi—Willmar	County Highway Garage	Wed., Sept. 17	9am–12pm
Meeker—Litchfield	Consumers Co-op - Fertilizer Plant	Thurs., Sept. 18	9am–12pm
McLeod—Hutchinson	Household Hazardous Waste Facility	Fri., Sept. 19	9am–12pm
Olmsted—Rochester	Household Hazardous Waste Facility	Tues., Sept. 30	9am–12pm
Goodhue—Zumbrota	County Fairgrounds	Wed., Oct. 1	9am–12pm
Wabasha—Plainview	High Plains Co-op	Thurs., Oct. 2	9am–12pm
Dodge—Dodge Center	County Highway Garage	Fri., Oct. 3	9am–12pm

IF YOU WANT MORE INFORMATION OR HAVE ANY QUESTIONS REGARDING WASTE PESTICIDES, PLEASE CALL 612-297-1062 OR 1-800-657-3986



Turf Supply Company

LONGEST CONTROL. BEST PERFORMANCE. LOWEST RATES.

Sentinel® turf fungicide has everything you need to prevent turf diseases on your golf course.

- **Longest Control** – 20-35% longer than other systemic fungicides to keep you and your sprayer off the course.
- **Best Performance** – Proven on brown patch, dollar spot, summer patch and 11 other turf diseases.
- **Lowest Rates** – New, low recommended rates are even gentler on your course.



Sentinel®

For more information contact your Turf Supply Representative at:

Turf Supply Company

2797 Eagandale Boulevard • Eagan, Minnesota 55121

(612) 454-3106 • Fax: (612) 454-7884 • 1-800-551-4857

'Par for the Course' Debuts On The Golf Channel

"Par for the Course," GCSAA's 30-minute television show, moved from ESPN to The Golf Channel on March 22. GCSAA will produce 13 episodes, airing every Saturday at 5:30 p.m., as well as rerunning once during a weekday afternoon and again Tuesdays at 2 a.m.

Each week, "Par for the Course" will take viewers inside the world of golf, featuring how-to-play instruction, outstanding places to play, interviews with industry leaders and celebrities, agronomic insights and environmental success stories.

On The Golf Channel, "Par for the Course" will receive an attractive early prime-time viewing slot and will reach a vital audience of influential golfers. GCSAA also will produce feature segments for the channel's live tournament telecasts. The Golf Channel is currently available in six million homes, but plans to be in 14 million homes by the end of 1997.

The Scotts Co. returns as the show's presenting sponsor, and this year's supporting sponsor is Responsible Industry for a Sound Environment (RISE). Several RISE members also have joined with the organization to sponsor a new segment within each episode. Segment presenting sponsors are Novartis, Rhone-Poulenc Ag Co. and Zeneca Professional Products, and the segment contributing sponsors are AgrEvo USA Co., American Cyanamid, BASF and Bayer Corp.

GCSAA will continue its excellent relationship with ESPN, producing feature segments to be aired during their 1997 PGA Tour and Senior PGA Tour telecasts. Feature segments will continue to air during TBS telecasts of PGA Tour events and the PGA Championship as well.

This article was reprinted with permission from the GCSAA and appeared in the February 1997 Issue of the GCSAA's Newsline.

A Growing Business:

*More seed, service, and
satisfaction for you.*

We're growing to meet your needs for improved turfgrass seed, wildflowers, and erosion control products. All at reasonable prices and just the right kind of services. Call 1-800-545-TURF.

**TWIN
CITY**
C O M P A N Y

7265 Washington Avenue So.
Edina, MN 55439
Phone: 612-944-7105
Internet: www.twincityseed.com



We'd like to say we buried the competition. But that would mean putting an extremely inferior fertilizer in the ground.



Only par ex with IBDU® has the highest WIN percentage. We have more than Lebanon® and more than Scotts®. Because the higher the Water Insoluble Nitrogen content, the longer your turf will remain green and the less chance there is for burn.

 **IMC Vigoro**

FROM FERTILE MINDS.

Lebanon is a trademark of Lebanon Shovelboard Corporation. Scotts is a trademark of O.M. Scotts & Sons Co. © 1996 IMC Agr. Business, Inc. All rights reserved.

Precision Turf & Chemicals
7728 Commerce Circle
Greenfield, MN 55373
612-559-5293

Ken Quandt
Territory Manager
West Allis, WI
414-327-3993

No matter
what condition
your course is in,
you'll be judged by the
quality of the greens.
That's reality.



Ransomes®
Greens Mowers.



Right or wrong, your reputation rides on your greens. And there's nothing that can make a bigger difference on the putting surface than a mower that will consistently deliver the high-quality cut you're after. Proper weight distribution, accuracy between heads and ease of control are just a few of the reasons that Ransomes® greens mowers have built a reputation that is unequalled on golf courses around the world. Add the perfectly balanced Greens Super 55, the ultraprecise Greensplex™ 160 and the proven, all-electric E-Plex™ to your fleet of equipment. Because in a world where you're known for your finish, you should finish with the best.



**CUSHMAN
RANSOMES
RYAN**

For The Best Results

Call today...

(612) 333-3487 or

Toll Free 1 (800) 759-5343

for a free on site demonstration.

Authorized Factory Dealer Since 1949

CUSHMAN MOTOR CO., INC. **CUSHMAN
TURF-CARE
EQUIPMENT**

2909 E. FRANKLIN AVE., MINNEAPOLIS, MN 55406 • (612) 333-3487 • TOLL FREE 1-800-759-5343 • FAX: (612) 333-5903