

## Minnesotan Receives Professional Certification

Kevin J. Black, Superintendent at Prairie View Golf Links, Worthington, has been designated a Certified Golf Course Superintendent (CGCS) by the Golf Course Superintendents Association of America (GCSAA).

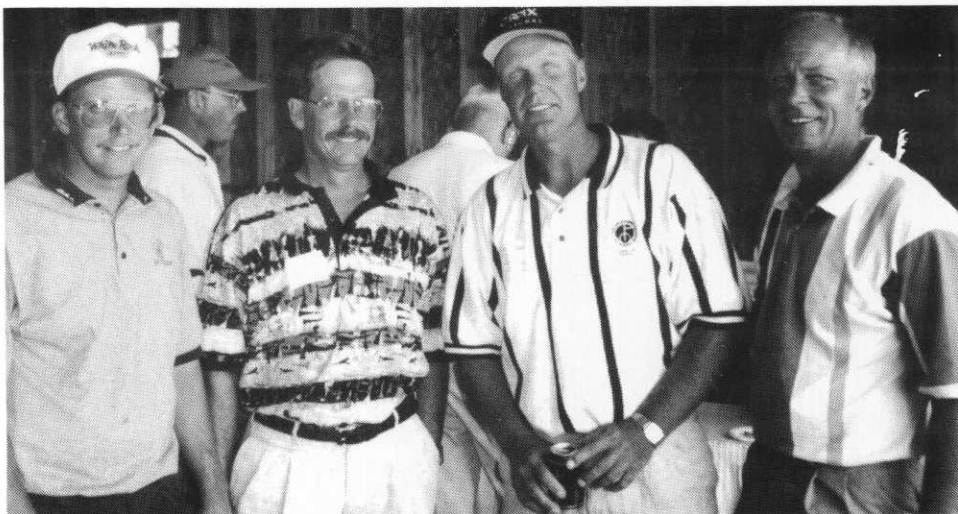
Black has been superintendent at the Worthington course since 1995. He lives at 1300 Apel Ave., Worthington.

GCSAA instituted the certification program in 1971 to recognize outstanding and progressive superintendents. More than 1,600 active GCSAA members currently hold "CGCS" status.

To become certified, a candidate must have five years experience as a golf course superintendent, be employed in that capacity and meet specific educational requirements of college credit or continuing education units. The candidate must then pass a rigorous six-hour examination covering knowledge of GCSAA and its certification program, the rules of golf, turfgrass management, pest management; safety and compliance and financial and organizational management.

As part of the certification process, an on-site inspection of Black's golf course operation was conducted by two certified golf course superintendents: Doug Wicks, CGCS, at Brooks Golf Course, Okoboji, Iowa, and Steve Harrer, CGCS, at Minnehaha Country Club, Sioux Falls, S. D.

**PLAN TO ATTEND  
THE MINNESOTA  
TURF & GROUNDS  
FOUNDATION'S  
CONFERENCE &  
TRADE SHOW  
DECEMBER 11-12  
AT MINNEAPOLIS  
CONVENTION CENTER**



**SUPER SUPERINTENDENTS**, from left to right, Jeff Backstrom, Cannon GC; Tom Fuller, Rush Creek GC; Kevin Clunis, Saint Croix National GC, and John Granholt, Eau Claire CC.



## CHIPCO® 26019 + Daconil® Stops Snow Mold Cold

Fifteen years of university testing proves it. Tankmixing CHIPCO® 26019 + Daconil® gives you superior control of both pink and gray snow molds all winter long. The contact activity of the two fungicides stops development of these fungal

diseases dead in their tracks. Plus the long residual of CHIPCO® 26019 systemic activity keeps on working all winter long. And don't let competitive claims fool you. Only CHIPCO® 26019 contains iprodione for added control of brown patch.

**BOB HEFTA  
(612) 894-6153**



Rhône-Poulenc Ag Company, 2 T.W. Alexander Drive, Research Triangle Park, NC 27709. For further product information, please call 1-800-334-9745. As with any crop protection chemical, always read and follow instructions on the label. CHIPCO is a registered trademark of Rhône-Poulenc. Daconil is a registered trademark of ISK Biosciences Corporation. ©1995 Rhône-Poulenc Ag Company.



## Paskvan Consulting

Route 1 Box 77A  
Akeley, MN 56433  
218-652-3542  
Fax 218-652-2949

*Where Success is Never an Accident*

Specialists in Soil and Plant Nutrition  
Tailored to Golf Courses and Sports Turf

### Services Provided:

Complete inventory of the soils on the course or job site  
Sampling, analyzing, delivery and interpretation of the results to eliminate guesswork  
Help find corrective fertilizer materials to save money  
Physical analysis on sand-soil-peat to determine proper mixing for greens and topdressing  
Fast turn around time, yet quality is never compromised

# Now. Or Never.

Start using Country Club homogeneous fertilizers, or give up the fight against uneven feeding. Each homogeneous granule contains the nitrogen, phosphorous, potash, and secondary and trace elements that turf requires. The efficient mix of water-soluble and insoluble nitrogen produces steady green-up while providing extended feeding. Call your local Lebanon distributor or 1-800-233-0628 for information.



**FRANK BADEN**  
Territory Manager  
Bettendorf, Iowa  
(319) 332-9288



**ST. CROIX NATIONAL PRO'S:** Chad Tucker, left, assistant pro, and Craig Linder, head pro, helped the championship run smoothly.



**JEFF LANGEVIN**, Par Aide Products Company, launches another slapshot.



**MGCSA AMATEUR CHAMPION** Bruce Leland, left, visits with, from left, Butch Greeninger, John Nylund and Steve Busch. Busch won the Long Drive contest on No. 4.



**MIKE OLSON** of Golden Valley Country Club attempts to get up and down for his par on the 13th hole at Saint Croix National.



## BE TRUE TO YOUR TURF.

*Plant Minnesota's Best From Twin City Seed.*

You can't do better than the proprietary turfgrasses, custom blends and bentgrass from Twin City Seed. We're the problem-solvers for greens, tees and fairways. Mix in our experience, service and competitive prices and you'll truly have the best turf in the state. Call 1-800-545-TURE.

7265 Washington Avenue So.  
Edina, MN 55439  
Phone: 612-944-7105  
Fax: 612-944-7239



**TORO**



## 10% Discount On "Fall Nutrient Products" Until October 15

★ **Maintain Root Depth and Mass** ★

### **Multi-purpose 6-0-0**

*Improves Soil Fertility Characteristics, Resulting  
In Increased Nutrient Retention*

### **Turf Iron 12-0-0**

*With Humic Acid.*

*An Excellent Organic Chelator of Fe*

### **Potassium 0-0-30**

*Builds Stem Strength*

*Increases Plant Durability*

### **Calcium and Magnesium**

*Increases Stress Tolerance in Plant*

### **Turf Plex IV 20-2-3**

*Primarily a Nitrogen Source*

*With Compost-Derived Humates*

### **Turf Plex VI 12-3-9 Granular Organic**

*With 56% WIN includes Ca, S, Mg, Fe, Mn and Zn*

**TECHNICAL BULLETINS / PROGRAMS AVAILABLE**

**Liquid Products May Be Sprayed  
Or Injected Through Irrigation**

ADDITIONAL PRODUCTS QUALIFY FOR DISCOUNT

## FOR MORE INFORMATION

**MTI** DISTRIBUTING CO. **TORO**

**PLYMOUTH HEADQUARTERS**  
Butch Greeninger  
14900 Twenty-first Ave. No.  
Plymouth, MN 55447-4655  
(612) 475-2200 Ext. 202  
1-800-362-3665

**FARGO BRANCH**  
Dan Evavold  
4310 Main Avenue  
Fargo, North Dakota 58104  
(701) 281-0775  
1-800-782-1031

# EDITOR'S CORNER

By Dale Wysocki  
Minnesota Vikings Football Organization

Standing on the outside looking at this discussion concerning dual membership and after reading the Chapter Affiliation papers last night, (no, I have nothing else to do) and after all I am not a member of GCSAA, so I did enter the legal jargon with a very open mind. In thinking through each area, I found that this piece of paper is a very powerful piece of paper, and I am assuming that the Board really has gone through and dissected it with the precision of a neuro-surgeon. There are parts that I wonder about and there are parts that just truly represent the legal requirement of today's world.

In a way this is a contract for affiliation. I still think that GCSAA's main pupose should be to educate people, be it Superintendents, Assistants or anyone else who is associated with Golf Course Management on how to do their job better. As far as the dual membership clause, I do not think that this is totally over yet. Maybe it is time that the information that the GCSAA sends voting members should really be looked at thoroughly, and acted upon. Since Class A and B members have one vote, you can exercise your right to vote with the MGCSA, or if you follow the directions in your election packet you could vote your one vote during the GCSAA Annual Meeting.

\* \* \* \*

I have got to give Thomas Parent a lot of credit for everything he did for *Hole Notes*. Tom brought out some subjects that made you think, and he was very candid with his beliefs. It is rare when you find a person with such conviction.

\* \* \* \*

What has been the difference between this year and last? The media weather forecasters have been claiming that it has been an extremely dry year around the Twin Cities. Close personal friends from up around Duluth have told me that they have received almost nine inches of rain from July 1 to August 8. If you're interested, there are construction plans for an Ark available through the Internet.

\* \* \* \*

Those in the know are saying that The Classic Golf Course at Madden's (site of this year's Stodola Reserach Scramble), is very dramatic! It will make for an interesting challenge. The golf course was designed by Geoff Cornish, Warren Rebholz, John Harris and Scott Hoffman, CGCS. I guess you could refer to this group as the "Dream Team of Golf Course Architecture."

\* \* \* \*

Bruce Leland, of Continental Bridge, repeated as MGCSA Amateur Champion. Absolutely awesome.

\* \* \* \*

The *Minnesota Golfer* magazine, published by the Minnesota Golf Association, recently ran an in-depth article about two very respected Golf Course Superintendents: James Gardner, CGCS, of The Wilds, and Jack MacKenzie, CGCS, of North Oaks. These stories were insightful and great publicity for all members of the MGCSA. The story focused on two exceptionally fine people who know what they are doing.



## GOLF COURSE Product of the Month

ECHO

PROFESSIONAL  
TOOLS

### GAS EDGER SPECIAL

was \$339<sup>99</sup>  
now \$299<sup>99</sup>

### PERFECT EDGE™ PE-2400

THE PERFECT FINISH  
TO A PERFECT COURSE



- ECHO Edger has commercial duty 23.6 cc engine with dual-piston rings and Pro-Fire™ Electronic Ignition for fast starts and dependable performance
- Weighs just 14 lbs., allowing greater mobility
- Pivoting mechanism allows fast non-slip adjustment to any cutting depth
- Debris shield assembly with durable wheel mounted height adjustment and rubber debris flap
- Extra large wheel with solid rubber tread
- 1-year commercial warranty

### BACKPACK SPRAYER MS-5

\$269<sup>99</sup>



#### FEWER STOPS BETWEEN REFILLS

- Fully enclosed piston pump 5-gallon backpack sprayer
- Adjustable shoulder straps and ergonomic lumbar support for improved operator comfort
- 24" brass lance with adjustable nozzle and oversized actuator
- 1-year commercial warranty

CALL YOUR MTI GOLF COURSE REP FOR MORE INFORMATION  
OR CALL MTI DISTRIBUTING CO., COMMERCIAL DIVISION

**MTI** DISTRIBUTING CO.

TORO

PLYMOUTH HEADQUARTERS  
14900 Twenty-first Avenue North  
Plymouth, Minnesota 55447-4655  
1-800-362-3665 • 612-475-2200  
FAX: 612-475-0351

FARGO BRANCH  
4310 Main Avenue  
Fargo, North Dakota 58104  
1-800-782-1031  
701-281-0775

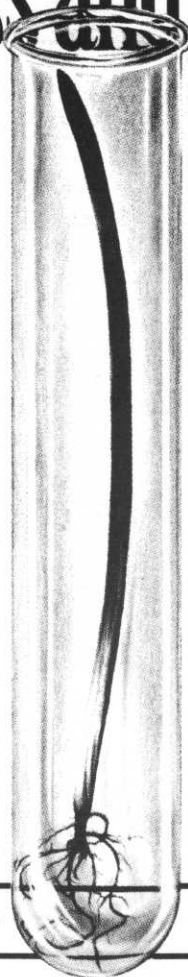
# Here's what 35 years of studying disease, stress and pests gets you.

When you've been in the turfseed business as long as Medalist America has, you've just about seen it all. For over 3 decades, Medalist has studied diseased turf, compaction problems, starved and baked turf, trampled turf and just about every other problem you can think of. So, what's there to show for it?



**NORTH STAR TURF, INC.**

3080 Centerville Road (612) 484-8411  
St. Paul, MN 55117 (800) 592-9513



Today, Medalist offers the most comprehensive line of turfgrass formulas designed to solve the toughest problems faced by turf managers everywhere. Together, Medalist America and North Star Turf offer you the industry's most asked for turfgrass mixtures coupled with the agronomic expertise and service you need to help them perform their best. Call North Star Turf today for the Medalist grass seed mix that best fits your needs.



<i>Medalist Elite Turf Products</i>	<i>Use</i>	<i>Special Features</i>
Overseeder II Mix 70% Kentucky bluegrasses 30% perennial ryegrasses	Establishment of athletic fields, fairways and roughs.	Traffic tolerant. Superior disease resistance and cold hardiness. Rapid establishment.
Athletic Pro Mix and Athletic Pro II Mix 50% Kentucky bluegrasses 50% perennial ryegrasses	Establishment and interseeding of athletic turf, tees, fairways and roughs, landscapes.	Quick establishment, wear tolerant, shear resistant, good recuperative ability.
Renovator Pro or Medalist Gold perennial rye blends	Renovation and overseeding of tees, fairways, athletic fields, landscapes.	Endophyte enhanced. Wear tolerant. Combats <i>Poa annua</i> , summer patch and necrotic ringspot.
Scottish Links 4-way fine fescue mixture	Establishment of golf course roughs and bunkers, roadsides, landscapes.	Aesthetic, low-growing grasses. Tolerant of drought, shade, low pH, low nitrogen.
Shady Turf Mix 60% fine fescues 40% Kentucky bluegrasses	Landscape turf, golf course roughs, sod production.	Tolerates shade or sun. Excellent cold hardiness and snow mold resistance.
Landscape Pro Mix 45% Kentucky bluegrasses 30% red fescues 25% perennial ryegrass	Golf and landscape turf where environment and future management are unknown.	Adaptable, persistent. Drought tolerant, shade tolerant, quick establishment.
Boulevard Mix 40% Fufts alkaligrass 30% Slender red fescue 20% Kentucky bluegrass 10% perennial ryegrass	Golf course or landscape turf stressed by saline or alkali soils or irrigation water.	Salt, high pH and alkali tolerant mix. Very persistent above 5/8".