



**TORO**

# Four Fairway Mowers to Choose From

- Hydraulic Reel Drive
- 2-or 4-Wheel Drive
- Diesel Liquid-Cooled Engine
- Lightweight (5100/5300-D)
- Mid-Sized (6500-D)
- Heavyweight (3500-D/4500-D)

**REELMASTER® 5100-D / 5300-D.** (below) *An advanced standard of lightweight fairway mowing — delivering enhanced playability, reliability and a new dimension of serviceability.*



**REELMASTER® 6500-D.** (at right) *Has the capacity to take charge of your most challenging fairway conditions. It's lightweight, agile and ushers in a new era of features which enhance quality of cut and after-cut appearance. You'll come to know it as the first truly mid-sized fairway mower.*



**REELMASTER® 3500-D.** (above) *A versatile, hard-working triplex mower. Designed to mow a wide range of turf areas — hills, formal and informal turf.*



**REELMASTER® 4500-D.** (above) *Superior playability. Superior cutting technology with exclusive variable reel speed and proven reliability with power to spare.*

**CALL MTI AND TEST THEM TODAY**

**MTI** DISTRIBUTING CO.



**TORO**

**PLYMOUTH HEADQUARTERS**

14900 Twenty-first Avenue North  
Plymouth, Minnesota 55447-4655

1-800-362-3665 • 612-475-2200 • FAX: 612-475-0351

**FARGO BRANCH**

4310 Main Avenue  
Fargo, North Dakota 58104

1-800-782-1031 • 701-281-0775

# HOLE NOTES

Official Publication  
of the  
Minnesota Golf Course  
Superintendents' Association

## Officers

President ..... James Gardner, CGCS  
The Wilds Golf Club  
612/496-0037 • Fax: 612/445-6320

Vice-President ..... Fred Taylor  
Mankato GC  
507/388-2546 • Fax: 507/387-4991

Secretary ..... John Granholt  
Eau Claire G&CC  
715/836-8422 • Fax: 715/836-8425

Treasurer ..... Tom Johnson  
New Richmond GC  
715/243-8030 • Fax: 715/246-7059

Ex-Officio ..... Kevin Clunis, CGCS  
St. Croix National GC  
715/247-4260 • Fax: 715/247-4266

## Directors

Jeff Backstrom ..... Cannon GC  
507/263-0831

Leif Erickson ..... O.M. Scotts Company  
800/728-0354

Butch Greeninger .... MTI Distributing Co.  
612/475-2200 ext. 202 • Fax: 612/475-0351

Richard Grundstrom ..... Indian Hills GC  
612/770-3091 • Fax: 612/770-2302

Robert Panuska ..... Waseca Lakeside Club  
507/835-2574

Thomas Parent .. River Oaks Municipal GC  
612/438-2707 • Fax: 612/438-2782

Charlie Pooch .. Les Bolstad U of Minn. GC  
612/627-4138 • Fax: 612/627-4391

David Sime ..... Benson GC  
612/843-2109

Pat Walton, CGCS ..... Rolling Green CC  
612/478-2179 • Fax: 612-478-6025

## EDITOR

Dale Wysocki

\* \* \* \*

## Editorial and Business Office

Scott Turtinen, Executive Director  
Minnesota Golf Course  
Superintendents' Association  
240 Minnetonka Avenue South/P.O. Box 617  
Wayzata, Minnesota 55391-1617  
TEL: 612/473-0557 • FAX: 612/473-0576  
TOLL FREE: 800-642-7227

## FROM YOUR PRESIDENT'S DESK

### Saint Croix National Will Soon Be An Outstanding Golf Gem



Wow, what a site for a golf course! A big thanks to the owners of Saint Croix National Golf Club and, of course, to host superintendent **Kevin Clunis** and his staff for making the course available for the MGCSA Championship. As fellow golf course professionals, we all could see the huge effort and tenacity that has been already put in by the grounds department staff on this soon to be golf gem. Thanks also to Craig and the golf shop staff for their help in our championship. P.S., don't forget to lock your cart brakes at Saint Croix National.

\* \* \* \*

**On the Chapter business front:** The new revised P&L has already brought out pertinent data that the Board will be evaluating and acting on. **Jim Nicol** is representing the MGCSA at the annual chapter delegates' meeting at GCSAA headquarters in Lawrence, Kans.

The Board had a good discussion on the re-affiliation (pro's & con's) at our most recent Board meeting and Jim was present so he can convey those concerns at the forum.

\* \* \* \*

**We are still looking for members** who would like to contribute to the association as Board Members for 1997-1998. If you are interested, please contact Kevin Clunis.

\* \* \* \*

**The 1996 MTGF Conference and Trade Show** looks fantastic from the Trade Show hours to the slate of speakers. Look for information coming out soon on a MGCSA Hospitality Night at the MTGF Conference. It is scheduled for Thursday night after the newly rescheduled 4:00 Annual MGCSA Business Meeting. That's 4:00 p.m., not a.m.

\* \* \* \*

**I would also like to welcome** a veteran interim editor for *Hole Notes*, **Dale Wysocki**. Thanks, Dale, for stepping up and helping out.

\* \* \* \*

**The MTGF Expo**, from all reports, went very well and the vendors should be commended for their great effort. Thanks.

\* \* \* \*

**Hope to see you at "The Classic"** for the Stodola Research Scamble at Madden's on Gull Lake.

—Respectfully,

James D. Gardner, CGCS  
MGCSA President

HOLE NOTES (ISSN 108-27994) is published monthly except bi-monthly December/January, February/March for \$2 an issue or \$20 per year by the Minnesota Golf Course Superintendents Association, 240 Minnetonka Avenue South, Wayzata, MN 55391-1617. Scott Turtinen, Publisher. Periodicals postage paid at Wayzata, MN. POSTMASTER: Send address changes to HOLE NOTES, 240 Minnetonka Avenue South, Wayzata, MN 55391-1617.

# Inside This Issue of Hole Notes

# Advertisers

- 5 The Joseph S. Garske Legacy Scholarship**  
By Steve Garske
- 6 'Sneak Preview' Provides An Early Peak at The Preserve**  
By Ralph Turtinen
- 12 Minneapolis Golf Club Hosts 'Dayton's Challenge'**  
By Dale Wysocki
- 14 The Ups and Downs Of Rolling Putting Greens**  
By Chris Hartwiger
- 27 1996 MGCSA Amateur Results at Saint Croix Nat'l.**
- 30 Study Shows Improvement In Environmental Attitudes**  
By GCSAA
- 31 Minnesotan Receives Professional Certification**  
By GCSAA

Bio Pro .....	33
Classifieds .....	25
Country Club Turf .....	26
Cushman Motor Co. ....	18
Duininck Bros. ....	Back Cover
ECHO .....	34
Glenn Rehbein Companies .....	11
Hedberg Aggregates .....	33
Lebanon .....	32
Leitner Company .....	7
MTI Distributing Co. ....	Inside Front Cover
MTI Distributing Co. ....	15
MTI Distributing Co. ....	19
MTI Distributing Co. ....	22
National Mower .....	30
North Star Turf .....	24
North Star Turf .....	Inside Back Cover
Par Ex .....	4
Paskvan Consulting .....	32
P&H Warehouse .....	17
Plaisted Companies .....	Insert
Polfus Implement .....	13
Precision Turf & Chemical, Inc. ....	21
Prinsco .....	20
Rhone-Poulenc .....	31
Rohling Green Corp. ....	30
Scotts Co. ....	23
Superior Tech Products .....	28
Turf Supply .....	9
Twin City Seed .....	33
Williams & Gill .....	20

## Departments

- 3 From Your President's Desk**  
By James Gardner, CGCS
- 20 Membership Reports**  
By David Sime
- 29 Committee Update**  
By Charlie Pooch
- 34 Editor's Corner**  
By Dale Wysocki



**Par Ex<sup>®</sup>**  
introduces  
a family of  
mid-sized  
fertilizer  
grades  
designed  
to meet  
the needs  
of today's  
closely-  
mowed  
turf.



**par ex**  
THE EX STANDS FOR EXCELLENCE

Par Ex<sup>®</sup> and IBDU<sup>®</sup> are registered trademarks of Vigoro Industries, Inc.

**WHY MID-SIZE GRADES FOR CLOSELY-MOWED TURF?**

**BECAUSE** fairway-sized particles are too large to apply to closely-mowed turf.

**BECAUSE** greens-sized products can be difficult to spread.

**BECAUSE** IBDU<sup>®</sup> is the most reliable, most consistent source of slow-release nitrogen.

For more information contact:

Precision Turf & Chemicals  
7728 Commerce Circle  
Greenfield, MN 55373  
612/559-5293

Ken Quandt  
Territory Manager  
West Allis, WI  
414/327-3993

# The Joseph S. Garske Legacy Scholarship ... The Story Behind It

By Steve Garske  
Par Aide Products Company

In 1990, my father, Joseph S. Garske, was honored with a MGCSA tournament in his name, The Garske Scramble. This tournament was initiated primarily as a fund raiser for scholarships to turf students with a format that would allow the opportunity for Superintendents to spend a day with key staff on someone else's golf course.

Throughout the year, I will typically have someone refer to the Garske Scramble as MY tournament. It's not, it's yours. My only connection is that I happened to be on the Scholarship Committee the year it was started and I had been offering a scholarship annually in my dad's name.

Joe Garske started Par Aide in 1954, with an idea and a challenge to make a "good" ball washer. He was a foundryman and an avid golfer but he knew nothing about the golf business. In fact, with a patent pending on the Par Aide Ball Washer (not much different from what we call our master Ball Washer today), and strong interest received at his first GCSAA Annual Conference and Show in 1955, he tried to sell the design, tooling etc., to the two accessory companies at that time: Standard Golf and Lewis Line. Turned down by both and the rest, as they say, is history.

In that my father was so much older than I, I never had the opportunity to work with him and, quite frankly, I have had to rely on the memories and stories of our MGCSA senior members to learn what I know about his involvement in the MGCSA.

However, outside of our industry, I do know that while he never felt college was necessary for an individual to be successful in life, he did provide financial assistance to students who wanted the education. Raised as an orphan, with only a 6th grade education, he was always self-conscious of what he thought was his lack of formal schooling. He passed away in 1982 at the age of 76.

I am pleased on behalf of Joe Garske and Par Aide to provide for the first Joseph S. Garske Legacy Award for the 1996-97 school year. This is a very satisfying announcement for me personally. In this day and age, the superintendent's job has become ever more demanding and yet still remains generally unrecognized. It's a labor of love. For many superintendents, providing a college education for their children requires true sacrifice. I feel very fortunate to have the opportunity and ability to not only help those who have helped make Par Aide successful but whom I also consider friends.

I thank each of you for making this possible.

## Legacy Scholarships Awarded

The MGCSA is pleased to announce that two Legacy Scholarships have been awarded for the 1996-97 school year. In accordance with the criteria provided, the Citizens' Scholarship Foundation of America has selected Tamara Johnson to receive the Joseph S. Garske Legacy Award and Andrea Rosales Smith to receive a MGCSA Legacy Award.



Tamara Johnson

**Tamara Johnson** is the daughter of Bill and Joanne Johnson. A long time member of the MGCSA, Bill recently retired from Edina Country Club after 30 years of service.

Tamara will be attending the University of Wisconsin-La Crosse with her major field of study being pre-physical therapy. She is a graduate of Robbinsdale Armstrong High School where she was named to the National Honor Society (2 years) and to the Spanish Honor Society (3 years). She was captain of her school's golf team which won the region in 1995 and was Lake Conference runner-up, and earned personal recognition for sportsmanship. Ms. Johnson also found time to dance competitively for many years and to volunteer extensively for the past three years at the Animal Humane Society, a local food shelf and other community organizations.

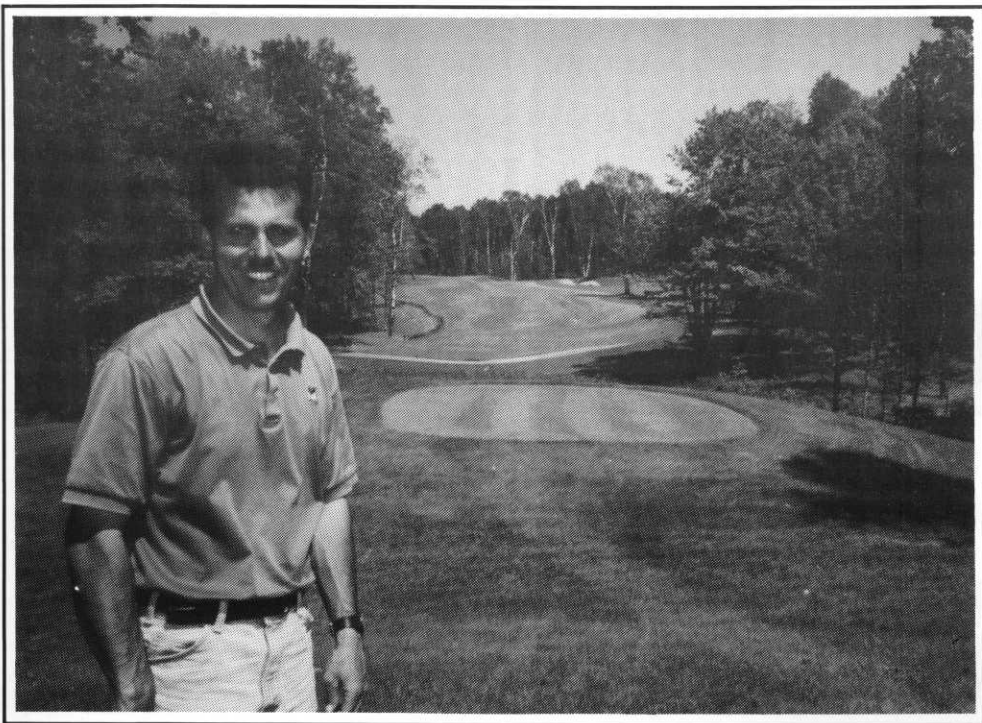
**Andrea Rosales Smith** is the daughter of Mark and Elsa Smith. Mark has remained a member of the MGCSA since 1972 and was a superintendent in Minnesota for 12 years. He is currently superintendent at The Quarry at La Quinta in La Quinta, Calif.



Andrea Rosales Smith

Andrea will return to Bethel College in St. Paul this Fall for her sophomore year. She is pursuing a major in Spanish and Communication. She graduated from Desert Christian High School (Bermuda Dunes, Calif.) in 1995, having received her school's Principal Award in her senior year. In her first year at Bethel, she played varsity level softball for the college. In addition to her studies and other activities during the upcoming school year, Andrea will also be serving as a Spanish tutor.

Congratulations to two very deserving young women as they continue in their academic pursuits. Best wishes for a wonderful future.



**ON THE FOURTH TEE**  
at The Preserve is Head  
Golf Course Superintendent  
Mike Bohnenstingl.

## 'Sneak Preview' Provides An Early Peek At The Preserve In Brainerd Lakes Area

For the month of September and possibly a few days in October, the highly-touted Preserve golf course will present a one-month "sneak preview" of its picturesque 18 holes on a limited basis.

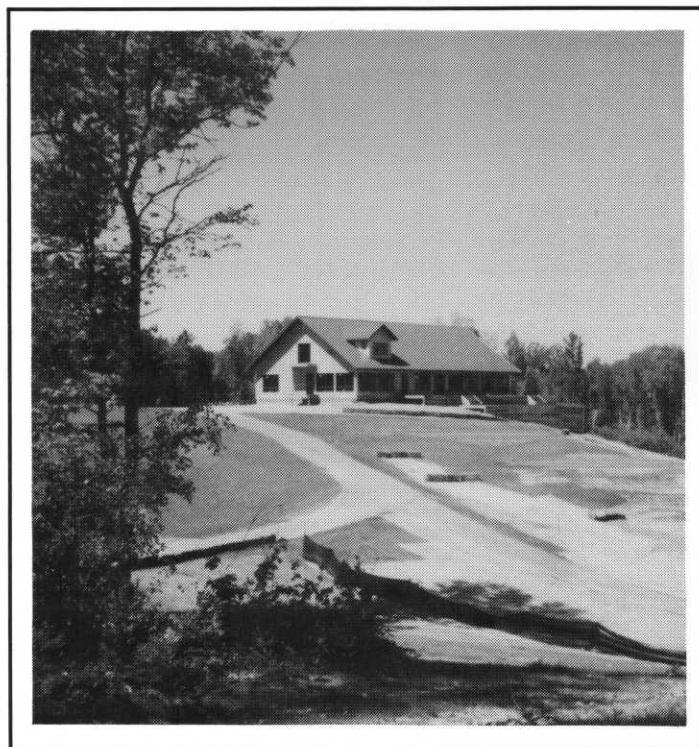
For Mark Bohnenstingl, newly-appointed head golf course superintendent, it's an excellent time to see how golfers react to The Preserve, even though there's still work to be done on the course and inside the clubhouse.

"This will provide a great opportunity to check out what remains to be done and also to review the positive results of what already has been accomplished," said Bohnenstingl, most recently assistant superintendent at Minnesota Valley Country Club before accepting the head position at The Preserve earlier this summer.

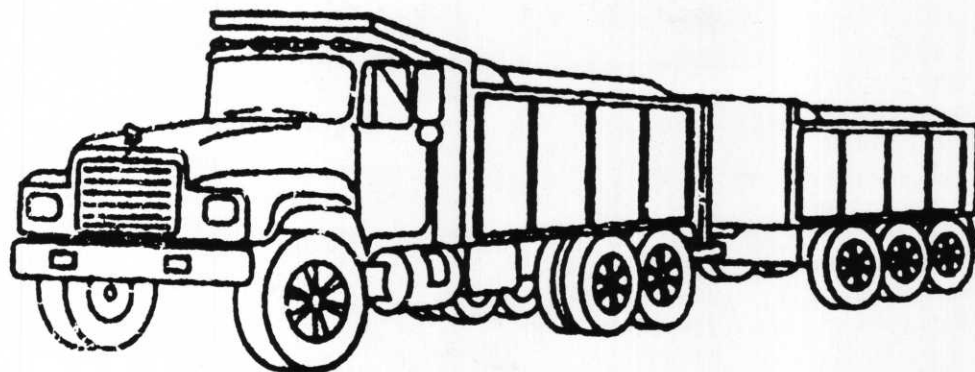
**Under construction for the past two years**, The Preserve is located five miles north of downtown Nisswa and two miles south of Pequot Lakes in Sibley Township. Visitors should go seven-tenths of a mile east of Highway 371 on County Road 107 and watch for The Preserve's entrance on the left.

Majority ownership was purchased by Grand View Lodge this past spring from Dan Helbling, who has been retained as a consultant. The Nisswa resort now has a total of 54 holes, including the new 18 at The Preserve, 27 more at The Pines and nine at the original Garden Course at Gull Lake.

*(Continued on Page 8)*



**THE NEW CLUBHOUSE** at The Preserve is framed in and scheduled to be completed during the forthcoming winter.



# LEITNER COMPANY

*Specializing In Soils For Golf Course  
Maintenance & Construction*

Soil mixing and processing specialists.

Supplying the Golf Course Industry with soil  
and sand products for over 50 years.

From 10 yards to 10,000 yards — material  
to specification for topdressing and construction.

Quality — Reliability — Experience

**MIKE LEITNER**

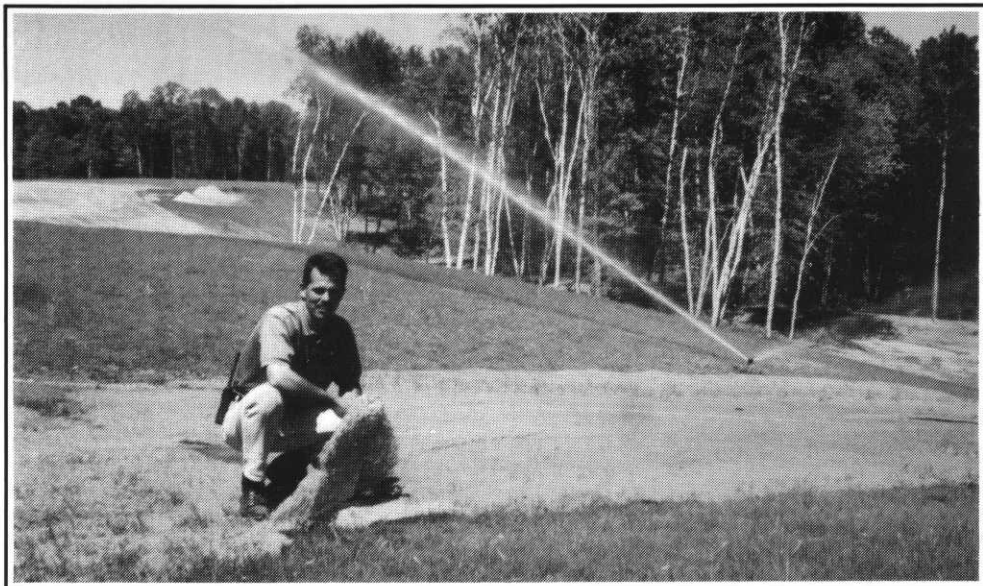
**LEITNER COMPANY**

945 Randolph Avenue  
St. Paul, Minnesota 55102

**(612) 291-2655**

*PROUD SUPPORTER OF RESEARCH AND EDUCATION THROUGH THE MGCSA*

**DISPLAYING  
A SLICE  
OF FUTERRA**  
which was used  
to control erosion  
after heavy rainfalls  
earlier this year,  
is Superintendent  
Mike Bohnenstingl.



**THIS  
“BEFORE”  
PHOTO**  
shows the  
placement  
of the  
Futerra  
at the  
18th green.

**THIS  
“AFTER”  
PHOTO**  
shows how  
the grass  
took hold  
after a couple  
of weeks.





***Turf Supply Company***



## **MILORGANITE**

SINCE 1926 . . .

TRUST. CONFIDENCE.

RELIABILITY. NO GIMMICKS,  
EXAGGERATED CLAIMS, OR  
UNKEPT PROMISES.

SUPERINTENDENTS AT TOP  
NORTH AMERICAN GOLF  
COURSES DEPEND ON  
MILORGANITE TO DELIVER  
PROVEN RESULTS.

- NATURAL ORGANIC
- SLOW RELEASE
- NO BURN
- MICRONUTRIENTS
- VERSATILE



***For more information contact your Turf Supply Representative at:***

***Turf Supply Company***

***2797 Eagandale Boulevard • Eagan, Minnesota 55121***

***(612) 454-3106 • Fax: (612) 454-7884 • 1-800-551-4857***





**AN  
APPEALING  
BALANCE**  
of pine and  
deciduous trees  
borders  
The Preserve's  
fairways, which  
weave their  
way around  
water and  
marshes.

## The Preserve—

*(Continued from Page 8)*

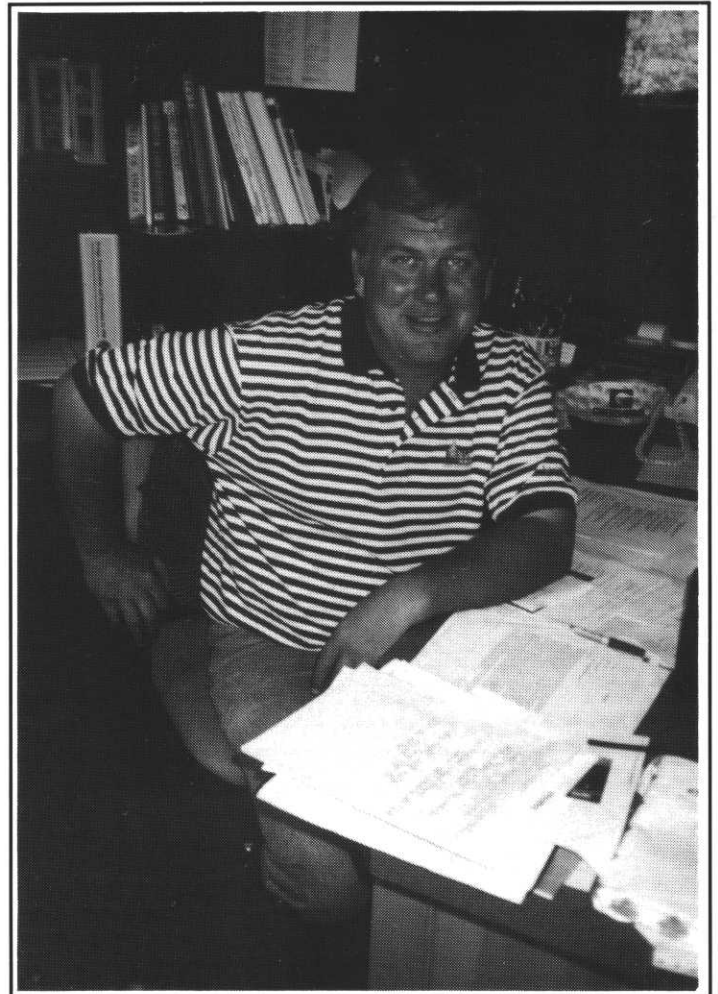
The new par 72 course, offering several spectacular vistas, has a balanced network of woods, water and marsh on its rolling terrain. In many ways its beauty reminds golfers of The Pines at Grand View Lodge, yet it definitely has its own appealing character. With four tees on each hole, the course plays anywhere from 5,100 to 6,800 yards, thus making it enjoyable for newcomers but also challenging for championship golfers from the back tees.

**“Play during the preview month of September** will be on a limited basis for the lucky golfers who obtain tee times,” said Tom Kientzle, CGCS, Grand View’s director of golf. Tee times may be obtained by calling 218/963-3146 or 88-THE-PINES.

Soft spikes will be required to golf at The Preserve. Players are urged to have them on when they get to the course, but pro shop personnel will help as much as possible to make changes.

“Play at The Pines has mushroomed over the past few years, and we needed more facilities to accommodate golfers who want to play excellent golf courses in this area,” said Mark Ronnei. “In addition, we will be extending our promotion of Grand View Lodge and our golf courses in such areas as Texas, Oklahoma and other southern states. We are most fortunate in so many ways that The Preserve complements our facilities at The Pines so well, truly making Grand View Lodge an attractive golf destination at a family resort.”

**“Green fees this year will be only \$25 for 18 holes and \$10 per person for a cart,”** said Kientzle. “The new clubhouse will have much to offer when it is completed this winter, but the course itself is ready for play, although we have several final touches to complete.”



**“THE PRESERVE COMPLEMENTS** The Pines at Grand View Lodge well,” says Tom Kientzle, CGCS, director of golf for the resort’s 54 holes.