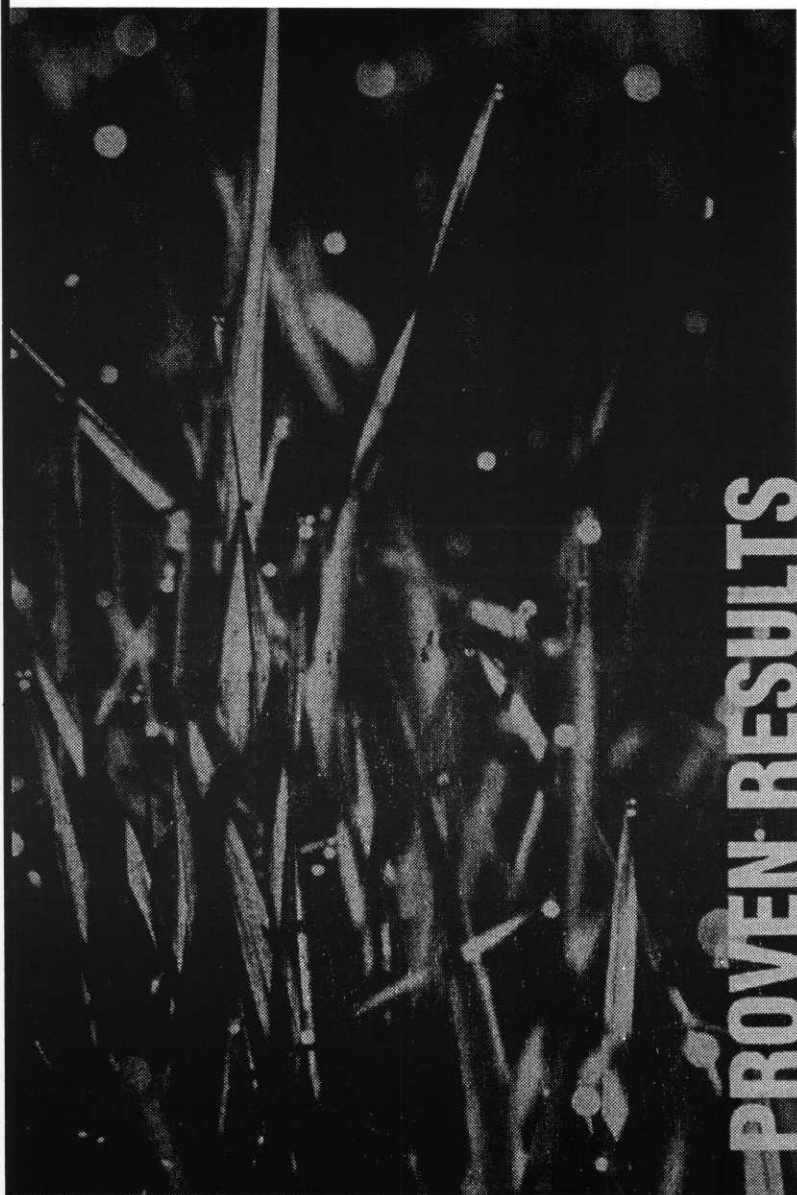




***Turf Supply Company***



## **MILORGANITE**

SINCE 1926 . . .

TRUST. CONFIDENCE.

RELIABILITY. NO GIMMICKS,  
EXAGGERATED CLAIMS, OR  
UNKEPT PROMISES.

SUPERINTENDENTS AT TOP  
NORTH AMERICAN GOLF  
COURSES DEPEND ON  
MILORGANITE TO DELIVER  
PROVEN RESULTS.

- NATURAL ORGANIC
- SLOW RELEASE
- NO BURN
- MICRONUTRIENTS
- VERSATILE

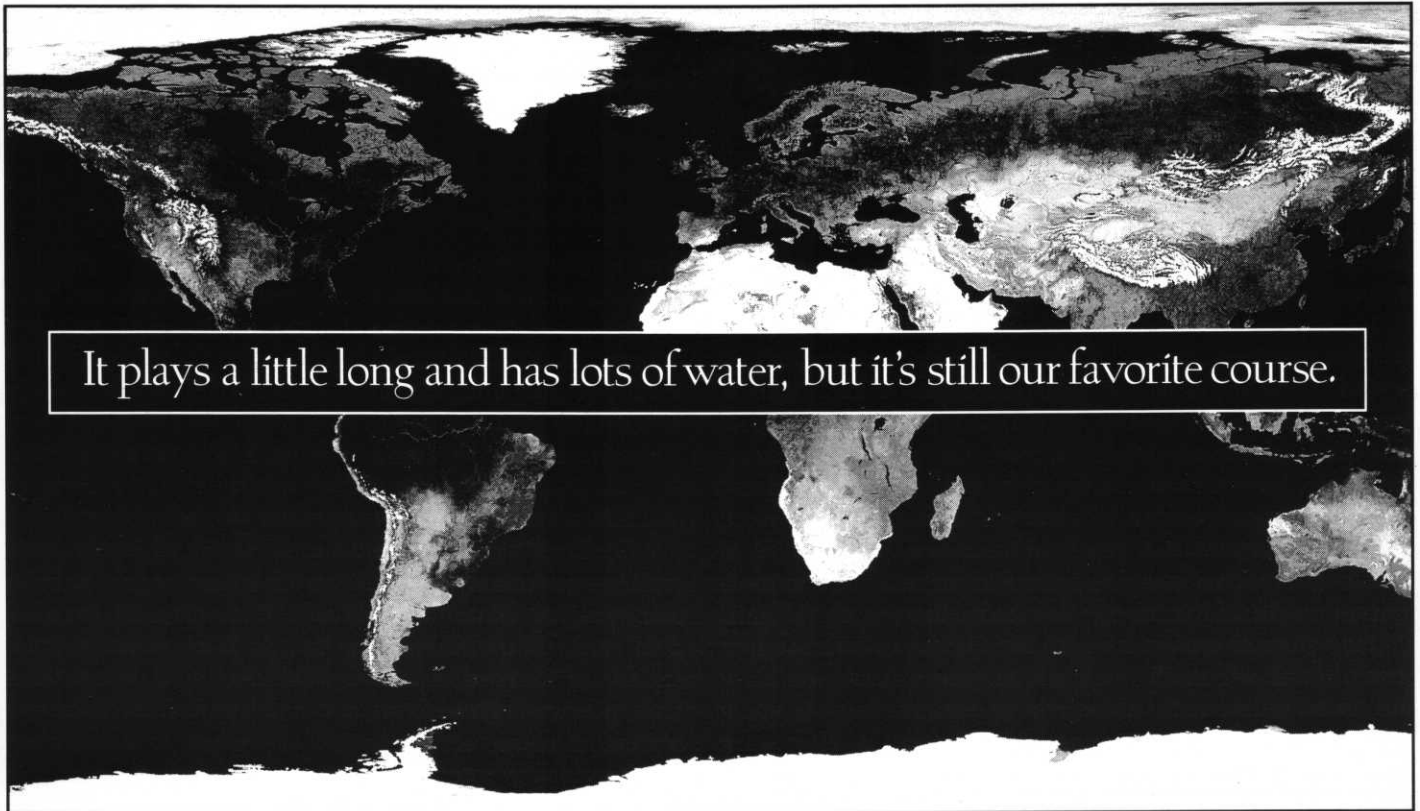


*For more information contact your Turf Supply Representative at:*

***Turf Supply Company***

***2797 Eagandale Boulevard • Eagan, Minnesota 55121***

***(612) 454-3106 • Fax: (612) 454-7884 • 1-800-551-4857***



It plays a little long and has lots of water, but it's still our favorite course.



For you and millions of other turfcare professionals, no one serves golf the world over quite like Jacobsen. In fact, you'll find Jacobsen on more than 75 percent of the world's courses. The benefit of such a far-ranging commitment to the game is uncompromised product quality and unparalleled product support.



Greens King™ V

You can count on Jacobsen equipment to deliver product performance that exceeds your high standards. And you can depend on Jacobsen mowing equipment for the highest quality of cut.

When you think golf, think Jacobsen and our full line of turfcare products. There's no single better source for products, services and support, no matter where in the world you are.



Tri-King™



LF-128™

THE PROFESSIONAL'S CHOICE ON TURF.

**JACOBSEN  
TEXTRON**

Jacobsen Division of Textron Inc.



3080 Centerville Road  
St. Paul, MN 55117

**NORTH STAR TURF, INC.**

(612) 484-8411  
(800) 592-9513

# CLASSIFIEDS

## FOR SALE

- 1992 Toro 7-gang Reelmaster, (5-blade) with Frame. Serviced, Sharpened and Ready to Go  
Excellent Condition
  - 1969 John Deere 300 Turf Tractor  
Power Steering, Set up to pull Rough Mower Reels
- Package Deal \$7,500.00** (will separate)

Contact: CHIP LOHMAN  
Voyager Village  
**(715) 259-3926**

## FOR SALE

1991 Toro Fairway Aerator — Model 9500  
Used one season. Price is negotiable.  
Contact: KEVIN CLUNIS  
St. Croix National Golf Club

**(715) 247-4260**

## EQUIPMENT FOR SALE

- Re-conditioned 5-gang Nation PTO Driven  
Rough Mower .....\$2,000

*Equipment like new. Very low hours.*

Contact: James D. Gardner, CGCS  
The Wilds Golf Club

**612/496-0037**

## FOR SALE

★ Yanmar 3-cylinder Diesel ★  
Contact: STEVE SHUMANSKY  
Perham Lakeside C.C.

**(218) 346-6071**

## FOR SALE

Nearby Model #300 Lapping Machine  
Contact: WILLIE KRAHN  
Mountain Lake G.C.

**(507) 427-2095**

## FOR SALE

Snowblower with heated cab for  
Toro Groundsmaster with 72" deck.

Contact: RICK  
Tartan Park GC  
**(612) 736-8797**

## GOLF COURSE CONSTRUCTION EQUIPMENT FOR SALE

- 1 JD 750 Dozer, 4-way blade, rock rake, recent engine O.H., good condition, w/daily log, service records and shop manuals ..... Asking \$39,000
- 1 JD 1020 tractor - new engine, new 2pt rops., remote hydr. w/diverter valve, ag tires, good condition.....\$6,500
- 1 Vermeer trencher. Model T300A, w/4-way backfill blade, and many new parts including chain. Good 4 cyl. Wisconsin engine.....\$3,000
- 1 Schulte rock picker. Very good cond. Used on one project .....\$8,000
- 1 Harley 3 pt. rock rake/land-leveler w/scarifier. Good cond.....\$5,000
- 1 small homemade screening plant (output: 25-35 yds/hr. sand, less for top soil ..... Make Offer
- 3 (IHC late 60's gas 5 yd. dump trucks. fair/poor cond. . . . Make offer on all 3
- 1 1959 IHC 190 series tandem 10 yd. gas dump truck. Good cond., strong reliable truck.....\$2,500

### WANTED

Loader/backhoe on rubber. Prefer 4wd. and extend-a-hoe. Will purchase or work out trade on any of above equipment, or with a JD 2750 4wd 80hp tractor w/quick attach 640 loader, full cab, air cond., dual remote hydr., new batteries, in good cond.

Contact: Fred Fabian  
Teal Wing Golf Club • Hayward, Wisconsin

Delivery Available **(715) 462-3422**

## WANTED

Ball Washers, Garbage Cans and Pull Carts.  
Must be in good or repairable condition.

Contact: MIKE BURKE  
Heart of the Valley Golf Club  
**(218) 784-4746 • (218) 784-4582**

## EQUIPMENT FOR SALE

- 1981 Jacobsen 22" Greens Mower • 1982 Jacobsen 20" Commercial Rotary Mower • 2 1984 Yamaha Golf Carts (need engine work)
- E-Z-GO Golf Cart (needs engine work) • 1981 E-Z GO GT-7 Utility Vehicle (no differential) • 1981 E-Z-GO GT-7 Utility Vehicle (needs engine work) • 1979 Cub Cadet 1650 Tractor w/E-Z-GO Driving Range Cage (needs work) • Granite Heavy Duty Trailer • 3-bin Stainless Steel Clubhouse Sink • Ball-O-Matic 500 Ball Dispenser w/tokens • Rangemaster Ball Dispenser w/tokens

All Items Sold As Is

Contact: Mike Rainaldo or Steve Flagstad  
Nemadji Golf Club • Superior, Wisconsin

**(715) 394-0339**

## FOR SALE

Cozy-Cab and Olathe 150 Snowblower  
\$3,000 or best offer.

Contact: RICK RANNELLS  
Root River  
**(W) 507-346-2501 • (H) 507-561-3631**

**SUPERINTENDENTS WHO ARE MEMBERS OF THE MGCSA  
MAY RUN CLASSIFIED ADS FREE OF CHARGE!**

**...JUST FAX THE MGCSA OFFICE AT (612) 473-0576**

# Williams-Gill



## & Associates

Garrett Gill, Principal

Golf Course Architects

Williams, Gill of Wisconsin  
421 North Main Street  
River Falls, WI 54022

Office (715) 425-9511

Facsimile (715) 425-2962

### • Services •

- New Course Design
- Master Plans
- Golf Practice Center Design
- Environmental Planning
- Irrigation Design
- Renovation & Restoration
- Site Planning

# OUTREACHES THE PRETTY BOYS

## That's The Beauty Of A National.

21" of reel outside the wheel. That's a claim the others can't make. With a National's flexible design, sand bunkers, curbs, or any trimming tasks are well within reach.

Call us, or your dealer today to try one on for size.

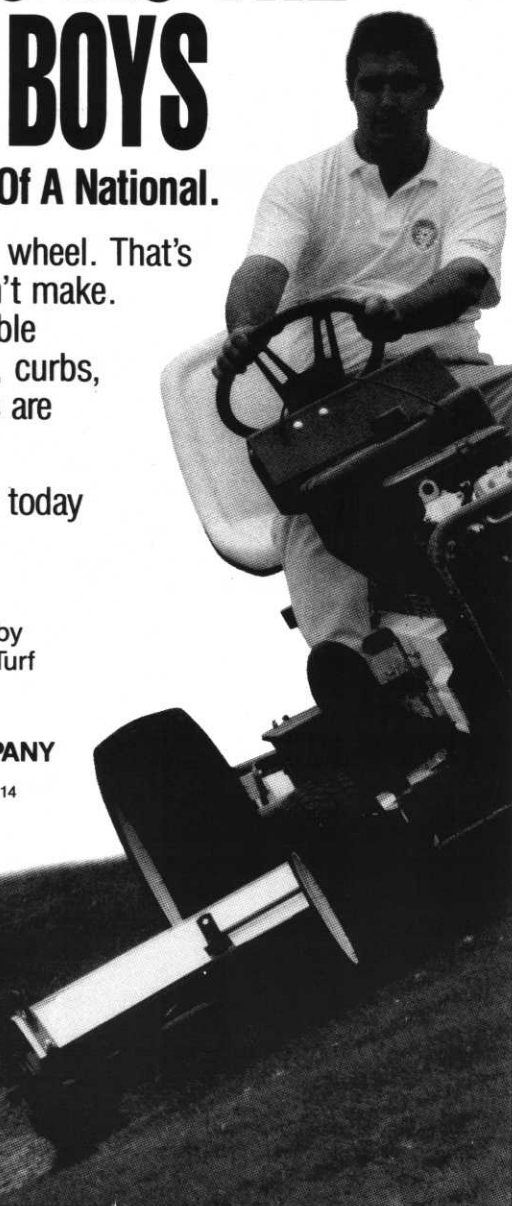
Distributed by  
North Star Turf



**NATIONAL MOWER COMPANY**

SINCE 1919

700 Raymond Avenue  
St. Paul, Minnesota 55114  
Phone: (612) 646-4079  
FAX: (612) 646-2887



**CHRIS QUINLAN**, Wilbur-Ellis Co., and **Bob Fredericks**, MTI Distributing Co.



**RELAXING** after the round.



**MGCSA PRESIDENT** James Gardner explains to **Russ Adams** and **Dick Grundstrom** where they might have saved a shot or two.



**RICK LUCKEN**, Benson Golf Club, tells **Paul Jones**, Tee Shot Marketing, that his drive home is longer.



# Winter Maintenance Sale

## On Most Toro Equipment



- Engine Tune Up •  
gas or diesel
- Hydraulic Oil System •  
oil, filter & test
- Traction System •  
brakes, belts & clutches
- Rotary Cutter Deck •  
level & sharpen
- Reel Grinding •



For more information or  
to arrange service, call:

Minneapolis: 475-2200 or  
1-800-362-3665  
ext. 269, 243 or 281.

Fargo: 281-0775  
or 1-800-782-1031  
"sharpening only"



# 20%

Off All Labor  
on all labor packages  
EXPIRES 12-31-96

**FREE**  
Hydraulic Oil  
first five gallons,  
with hydraulic  
tune up

**TORO**

**SALE**  
High Volume  
Replacement Parts  
Special savings on  
selected TORO parts.

**FREE**  
Delivery  
first 200 miles  
with purchase of  
service package

**TORO**

**MTI** DISTRIBUTING CO.

**TORO**

PLYMOUTH HEADQUARTERS  
14900 Twenty-first Avenue North  
Plymouth, Minnesota 55447-4655

1-800-362-3665 • 612-475-2200 • FAX: 612-475-0351

FARGO BRANCH  
4310 Main Avenue  
Fargo, North Dakota 58104  
1-800-782-1031 • 701-281-0775

# JOB OPENINGS

## GROUNDSKEEPER AT CARGILL

Salary: \$10.24/hr. with excellent benefits.  
Hours: 7:00 a.m.-3:30 p.m.

Cargill has an immediate opening for a groundskeeper at our Minnetonka office complex. Duties will include mowing, trimming, fertilizing, landscaping, and snow removal.

Qualified candidates must have a 2-year v-tech degree in landscape/horticulture or equivalent experience. Must be mechanically inclined, able to work with minimal supervision, have a good attendance record, a valid motor vehicle operators license, the ability to work non-business hours as necessary and be a good teamplayer.

Experience plowing snow is a definite plus. Send resume to Kerry at Cargill, P.O. Box 5697, MS #10, Minneapolis, MN 55440-5697. EOE

## National Mower Co. & Turfco Mfg.

### Position Opening

Sales rep for both companies.

Work with distributors and end users.

### Territory

Great Lakes, Midwest

### Travel

Minimum of 140 nights out a year.

### Qualifications

Must be able to travel.

Turf background.

Equipment background.

### How to apply

Call or write to:

Stan Kinkead & George Kinkead

National Mower & Turfco

700 Raymond Ave.

St. Paul, MN 55114

Phone: (612) 646-4079

Fax: (612) 646-2887

## Hayward Golf & Tennis Club

Hayward Golf & Tennis Club is a semi-private, 18-hole course.

Duties include: Maintenance and recordkeeping of full line of golf course equipment which includes real grinding (Foley grinders). Maintain fleet of 50 Yamaha golf carts.

Salary and Benefits: 12 months full-time. \$8.00-\$10.00 per hour — negotiable depending on experience. Two weeks paid vacation. Paid holidays. Paid training seminars. Other possible benefits for an experienced candidate.

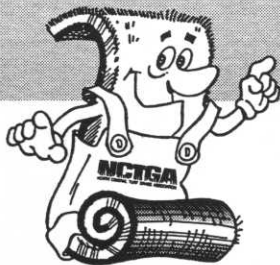
Send resume to:  
Hayward Golf & Tennis Club  
P.O. Box 1079  
Hayward, WI 54843  
c/o Greg Dobbs  
(W) 715/634-2450  
(H) 715/ 634-1796

## QUALITY SUPPLIER OF TURF

- **Washed** and Regular Turf (Sod) in 1½ yd. or up to 55 yd. Big Roll Size (42" Wide)

### TURF TYPES:

- ELITE KENTUCKY BLUEGRASS BLEND
- SPORTS TURF  
BLUEGRASS/P. RYEGRASS BLEND  
BENTGRASS



### MEMBER

NCTGA	MGCSA
MSTMA	WTA
SDGSA	ISTMA
MTGF	TPI

For Quality Turf Contact:  
(612) 674-7937 • FAX: (612) 674-7044

8651 Naples St. N.E.  
Blaine, MN 55449

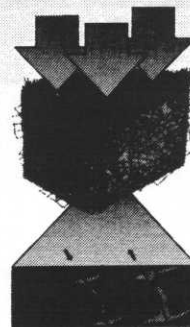
## QUALITY CONSTRUCTION & RECONSTRUCTION

- Golf Courses
- Sports Fields



### NETLON® ADVANCED TURF SYSTEMS

Self-Cultivating means healthier turf and better drainage.



### NETLON® MESH ELEMENTS AND MIXES

For Compaction Resistance on cart paths, sports fields and other high use areas.

For Quality Construction & Netlon® Products Contact:  
(612) 784-0657 • FAX: (612) 784-6001





**WINNERS** of the October Mixer at Fox Hollow scramble to pick out prizes.



*Specializing in*  
**Re-Design & Construction**  
**of Golf Courses**

*Consultants*  
*Project Management*

**Contact:**  
**Gerald "Gary" Rohling**

817 Gates Avenue  
 Elk River, MN 55330

**(612) 441-5127**  
**Fax (612) 441-3851**



**A-NO. 1 BALL HUNTER** Steve Garske, Par Aide Products Co., successfully finds his golf ball along the banks of the Crow River.

## CORRUGATED POLYETHYLENE PIPE

**Prinsco pipe**  
**will keep your greens**  
**and fairways dry...**  
**and always**  
**ready to play.**



**PRINSCO INC**

Manufacturer of GOLDFLO Dual-Wall and  
 GOLDLINE Corrugated Polyethylene Pipe

**800-992-1725**



**CALL FOR A FREE CATALOG**  
*and the distributor nearest you.*

## E. Paul Eckholm Receives Professional Certification

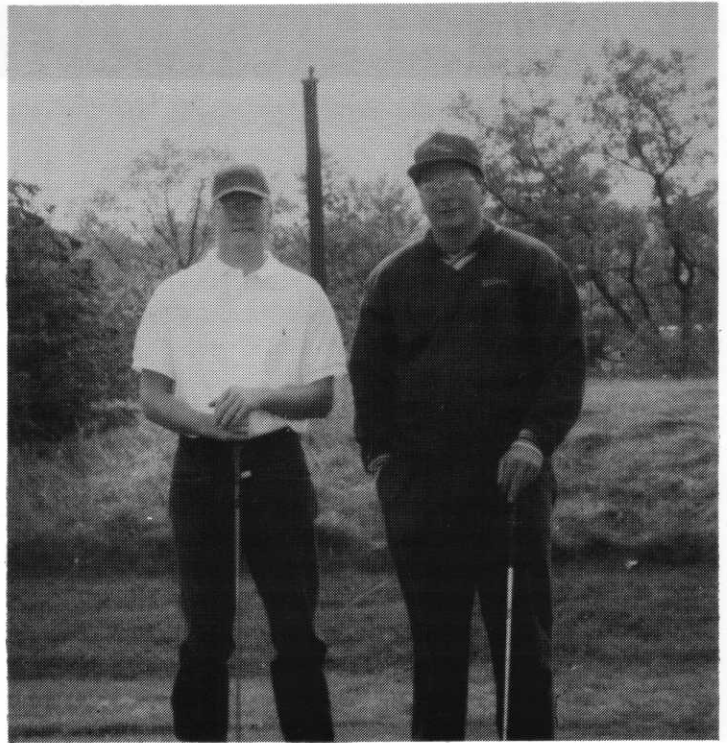
E. Paul Eckholm, superintendent at Heritage Links Golf Club, has been designated a Certified Golf Course Superintendent (CGCS) by the Golf Course Superintendents Association of America (GCSAA).

Eckholm has been superintendent at the Lakeville, Minn., course since February, 1996.

GCSAA instituted the certification program in 1971 to recognize outstanding and progressive superintendents. More than 1,600 active GCSAA members currently hold "CGCS" status.

To become certified, a candidate must have five years' experience as a golf course superintendent, be employed in that capacity and meet specific educational requirements of college credit or continuing education units. The candidate must then pass a rigorous six-hour examination covering knowledge of GCSAA and its certification program; the rules of golf; turfgrass management; pest management, safety and compliance, and financial and organizational management.

As part of the certification process, an on-site inspection of Eckholm's golf course operation was conducted by two certified golf course superintendents: Paul Diegnau, CGCS, at Keller Golf Course in Maplewood, Minn., and James Gardner, CGCS, at The Wilds Golf Club, Prior Lake, Minn.



**HOSTS AT FOX HOLLOW** were Assistant Superintendent Rob Hanson, left, and Head Superintendent Chuck Molinari.

**HEDBERG**  
AGGREGATES

*"Built on Service"*  
**For all Your Landscape Hardgoods**

Washed Sand & Gravel, Rip-Rap,  
Boulders, Decorative Rock, Mulches.



### Free Installation Training

Complete Line of NDS Drainage Products  
Concrete Retaining Walls  
Concrete Pavers  
Complete Line of Landscape  
Site Furnishings  
Largest Natural Stone Inventory  
in Minnesota

**INTERLOCK**  
CONCRETE PAVING



### 2 Convenient Locations

**Plymouth**  
1205 Nathan Lane N.  
545-4400

**Rosemount**  
4375-170th St. W.  
423-5320

**Same Day Delivery**

## Get Tough With Your Turf.

For superior fertilizers, effective insect, weed and disease control products, and grass seed, Lebanon Turf Products are guaranteed to get the job done. Lebanon Turf Products are university tested to ensure predictable and reliable results. With over 40 years of experience in the turf care industry, Lebanon provides you with unsurpassed product lines and professional salespeople. Our turf-care professionals can answer your toughest questions and help you combine the right mix of products for your soil conditions and turf needs. Call your local Lebanon distributor or 1-800-233-0628 for more information.

Country Club®

greenskeeper

NX-PRO®

Lebanon Pro



**FRANK BADEN**  
Territory Manager  
Bettendorf, Iowa  
(319) 332-9288



# MEMBERSHIP REPORT

## NEW MEMBERS—SEPT. 30, 1996

Member Name	Class
<b>Jim Elling</b> Hiawatha GC ..... A 319 Walnut, Mankato, MN 56001 W: 605-987-4309	A
<b>Daniel Carlson</b> Pine City CC ..... B 925 1st Ave. NW Pine City, MN 55063-1008 W: 320-629-3848	B
<b>Wesley Salo</b> Ridgeview CC ..... B 519 Anderson Rd., Duluth, MN 55811 W: 218-728-2583	B
<b>Thomas Eschete</b> Crystal Lake ..... B 15251 Greenhaven Dr., Apt. 141, Burnsville, MN 55306 W: 612-953-3656	B
<b>Jason Balko</b> Redwood Falls GC ..... C Rt., Box 51, Redwood Falls, MN 56283 W: 507-637-8901	C
<b>Richard Meyer</b> GC at Whitehawk Ranch ..... C P.O. Box 20432, Graeagle, CA 96103 W: 916-836-0944	C
<b>Greg Lewis</b> U of W — River Falls ..... Student 120 S. 3rd St., River Falls, WI 54022 H: 715-425-8116	Student
<b>Joseph Tart</b> U of W — River Falls ..... Student 465, 184th Ave., Somerset, WI 54025 W: 715-247-4260	Student
<b>Jim Pollock</b> Midland Hills CC ..... D 11700 Kumquat St. NW Coon Rapids, MN 55448 W: 612-631-1545	D
<b>Jerry Parker</b> Midland Hills CC ..... D 12866 Ingersoll Ave. No. Hugo, MN 55038 W: 612-631-1545	D
<b>John Quinlan</b> Wilbur-Ellis ..... F 4826 Chown Ave. S., Mpls, MN 55440 W: 612-309-6424	F
<b>Rick Gabler</b> Superior Tech Products ..... F 8320 Fern Lane, Loretto, MN 55357 W: 612-934-1205	F
<b>James Shone</b> Zeneca Professional Products ..... F 1715 Cambridge St. Charles, IL 60174 W: 708-377-1342	F

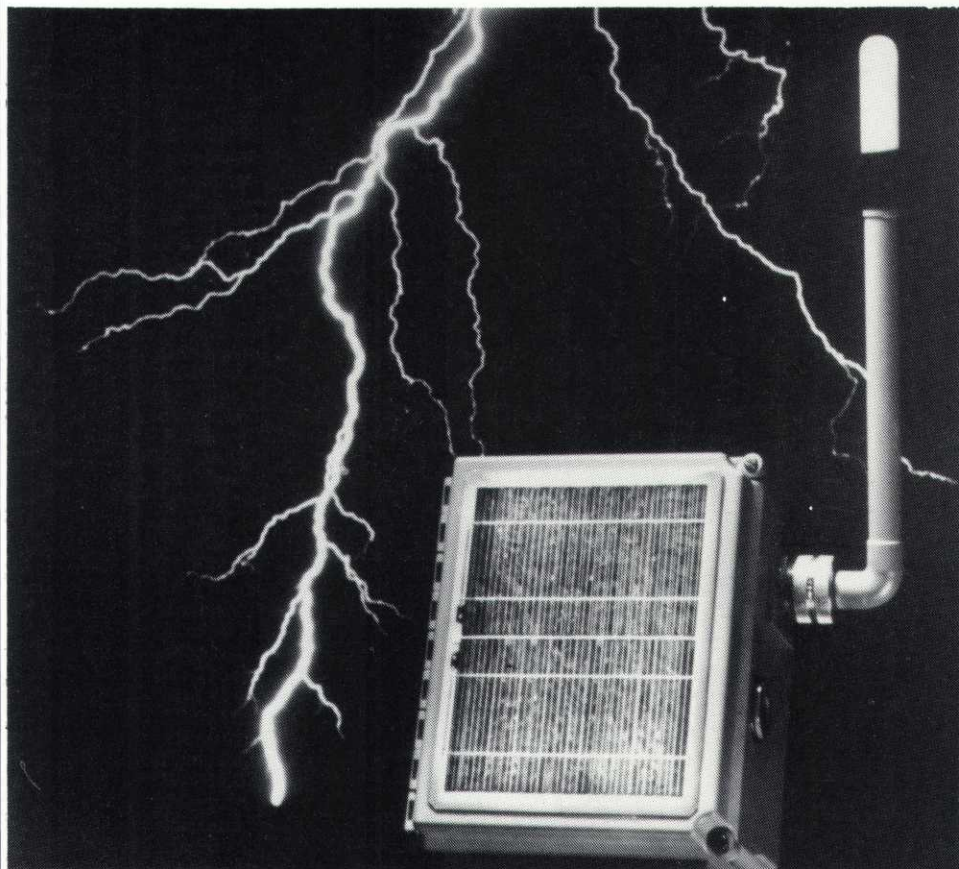
## RECLASSIFICATIONS

<b>Jay Stadler</b> Central Irrigation Supply ..... C to F	C to F
<b>Jay Gustafson</b> Swan Lake CC ..... B to A	B to A
<b>Ron Furlong</b> Buffalo Heights GC ..... C to B	C to B
<b>Jerry Schirm</b> Golden Valley CC ..... D to C	D to C
<b>Kurt Hadler</b> Hidden Creek GC ..... Student to C	Student to C
<b>Michael Cohrs</b> Buffalo Run GC ..... D to C	D to C

David Sime,  
MGCSA Membership Chairman

# ESID

ELECTRICAL STORM IDENTIFICATION DEVICE



Early warning of thunderstorm activity in your area is essential when you need to make critical decisions regarding personnel safety and the isolation of sensitive equipment. The **USGA, PGA,** and over 500 individual golf courses rely on **Global Atmospheric Inc.**, manufacturer of **ESID**.

**Renowned organizations such as NASA, Seaworld, the National Weather Service, the U.S. Military, American Airlines, MCI** and hundreds of customers in over 30 countries worldwide have chosen **Global Atmospheric** to meet their lightning warning, detection and information needs. This depth of experience is just one of the reasons that led **TORO**, the leading turf management organization in the world and **QPS**, manufacturer of the #1 golf course siren system, **COURSE ALERT**, to select **Global Atmospheric** to co-develop a product to meet the unique needs of their golfing customers, friends and associates.

That product is **ESID**

When you need...

- 100% Thunderstorm Detection Efficiency
- Complete Warning / System Shut-down Automation
- Zero False Alarms
- Highly Accurate Range Information
- Easy Installation
- Low Maintenance
- Patented State of the Art Technology

...and the **confidence** of teaming up with the **World Leader** in lightning detection and location.

**MTI** DISTRIBUTING CO.

**TORO**

Contact: **Dean Chaltas** at **612-475-2200** ext. 224  
14900 - 21st Avenue North, Plymouth, MN 55447



# EDITOR'S CORNER

By Dale Wysocki  
Minnesota Vikings Football Organization

An observation, as I sit with my peers at a meeting to listen to a self-proclaimed expert about the down side of pesticide use:

My mind is aghast with the comments made about just what the side effects of chemicals will do to the soil organisms, birds, cats, dogs, wildlife and my family. Granted, years ago when DDT was prevalent and used exclusively on almost everything, there might have been a case of over use.

But now, Golf Course Superintendents are so well-trained, the Superintendent can usually predict when Dollar Spot is going to hit what green within two days. Is that an overstatement? No, I don't think so. I can relate to IPM; it's either Integrated Plant Management or Intelligent Plant Management.

To look at "integrated" in the dictionary, you find it means to bring together, to make useful. Now when utilizing IPM, you bring together several facets, sampling, scouting, logging environmental conditions and identification. Once you have determined the pest, then you will decide to go into a problem solving mode.

I think the most overlooked aspect of IPM is like the "Intelligent" part. Golf Course Superintendents know that you can't do certain things, like grow Bermuda grass in Minnesota. Grass is a very viable plant; it is alive. Grass needs the micro-climate and the macro-climate. In the micro-climate and macro-climate there are living organisms that benefit the grass plant; it does not make sense to remove one's livelihood.

I read an article put out by the University of Minnesota Landscape Arboretum. A comment was made that "golf courses must be one of the most chemically addicted systems in nature." It seems again that people are misconstrued about exactly what happens at a golf course. This time let's look at the Big Picture.

Let's start up the economic side. There's employment for people not just on the golf course either. There's the aesthetic view, and then there are trees and grass-producing oxygen and filtering the dust from the urban arena. Now, I suppose, you could put family values out on that golf course. My son misses the time we would spend together cutting cups and setting tee markers, good bonding time.

Are we chemically addictive? Not on your life! We use different ways to control diseases, and we know that aeration will provide us with healthier grass, even though our member-bosses dislike it. Years ago things might have been different, but, the future is now! And now we make our stand and educate ourselves constantly. I know sever-

al people who always have had a level of intensity several planes above everyone else; these are amazing people who can spin circles around the best. When it comes to IPM, these people know the route to take when dealing with pests of turfgrass, trees and aquatics, keeping in mind that the "Big Picture" will not be affected adversely.

\* \* \* \*

**Congratulations to Jim Nicol, CGCS,** for being appointed to the Golf Course Superintendent's position at Hazeltine National Golf Club.

\* \* \* \*

**I had a chance to read an article** in the Star Tribune about harvesting peat. The article was very informative and actually explained the process that is required for getting 3,000 to 5,000 year old reed sedge peat. I was amazed by the care that is exercised by the companies to "re-bog" these areas after the harvest is completed.

\* \* \* \*

**The 1996 golf season is almost over.** It's time to review and evaluate everything. The traditional questions remain. The comments from the Green Committee over the summer will be addressed and acted upon (if they haven't been already) and a new game plan for a successful 1997 will be implemented. The following list will offer you an idea.

- You must clearly identify what your responsibilities are as golf course superintendent.
- You must constantly analyze the methods you are using to implement strategies and determine the capabilities of your staff and equipment.
- Determine your goals for the season.
- When determining your goals, educate your membership through the club's newsletter or bulletin board for everyone to be aware. Communication is key!
- When training your staff, make them aware of your expectations and the goals that you have set forth. Make it so that the goals can be identified, practiced and implemented by the entire grounds staff.
- Plan for every conceivable contingency your staff will face, no matter how unusual the circumstances may seem.
- You should be as detailed and specific as your time and materials allow.
- Make sure you are using all the tools available to you.
- Recognize that the most important factor in your plan is the human element, and that the way you interact with your staff and membership affects any and all preparations you make.

## ATTENTION STODOLA SCRAMBLE CD PLAYER RAFFLE WINNER!

The remote and instructions to the CD player that was raffled off at the 1996 Stodola Research Scramble is at the MGCSA office. Call (612) 473-0557 or toll free at 1-800-642-7227 and we will send these to you.