

Maintenance Facilities —

(Continued from Page 27)

For more information on reducing and recycling wastes, contact the Minnesota Technical Assistance Program (MNTAP) at (612) 627-4646, or toll-free at 1-800-247-0015.

On-Site Disposal

If on-site disposal is unavoidable, the design of the plumbing system can help in reducing the amount of pollutants discharged. Plumbing should include a sediment collection point and a flammable waste trap at facilities where wastes will be discharged to a septic tank or drainage field. See the diagrams on the following page for typical plumbing designs.

Plumbing for public buildings must be approved by the Minnesota Department of Health, or a city agency delegated to perform plumbing plan reviews.

Septic tanks and drainfields should also be carefully designed so that they can handle the amount of wastes that will be discharged.

For more technical information on septic tank and drainfield design, contact Gretchen Sabel, MPCA, at (612) 296-0550.

Car Wash Operational Controls

Operational controls are essential to ensure that no on-site disposal of hazardous waste occurs. The MPCA recommends the following for car wash and maintenance facilities.

- Train all facility users to assure compliance with rules.
- Have an attendant on-site when facility is open.
- Use biodegradable soaps only — no solvent-based cleaners.
- Exterior vehicle washing only — no engine cleaning.
- No washing of oily vehicles.
- No parking or maintenance of vehicles in wash bay.
- No storage or use of hazardous materials in wash bays.

This means that most coin-operated car washes should not be connected to on-site sewage treatment systems. Fa-

cilities that do not conform to these recommendations will be referred to the U.S. Environmental Protection Agency for further evaluation.

Maintenance of Facilities

Maintenance of wash facilities and on-site sewage systems is critical. Treatment equipment, tanks and chemical containers should be checked for leaks on a regular basis. Septic tanks should be pumped and grit from sediment traps removed on a regular basis. Sludge and grit

should be evaluated to determine whether or not they are hazardous and how they should be handled.

Contacts for More Information: Hazardous Waste Management and Disposal

Call the MPCA at (612) 297-8364 or toll-free at 1-800-657-3724.

Reducing and Recycling Wastes

For ideas on reducing and recycling wastes, call MNTAP at (612) 627-4646 or toll-free at 1-800-247-0015.

CORRUGATED POLYETHYLENE PIPE

Prinsco pipe
will keep your greens
and fairways dry...
and always
ready to play.

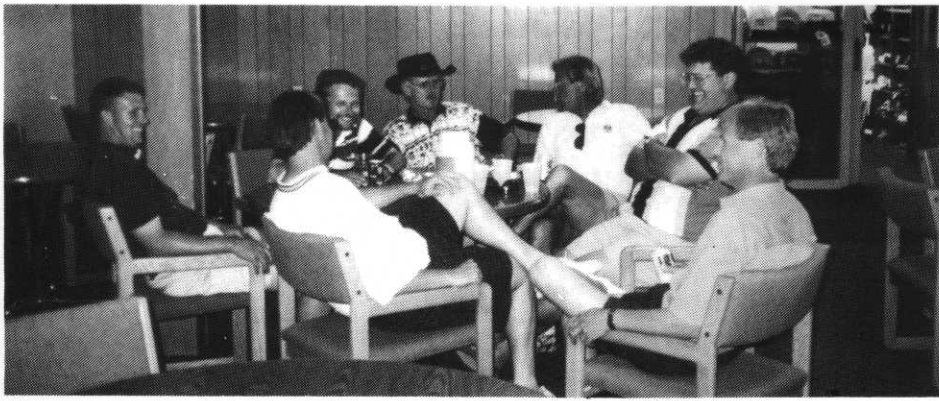


PRINSCO INC

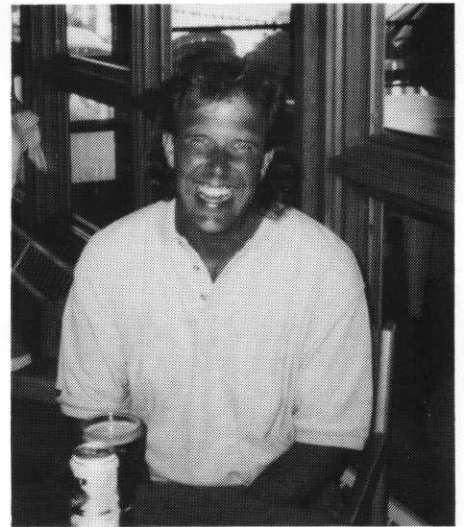
Manufacturer of GOLDFLO Dual-Wall and
GOLDLINE Corrugated Polyethylene Pipe

800-992-1725

**CALL FOR A FREE CATALOG
and the distributor nearest you.**



Some members gather for hors d'oeuvres after their game of golf.



Mark Fossum, host superintendent at Headwaters Country Club.

OUTREACHES THE PRETTY BOYS

That's The Beauty Of A National.

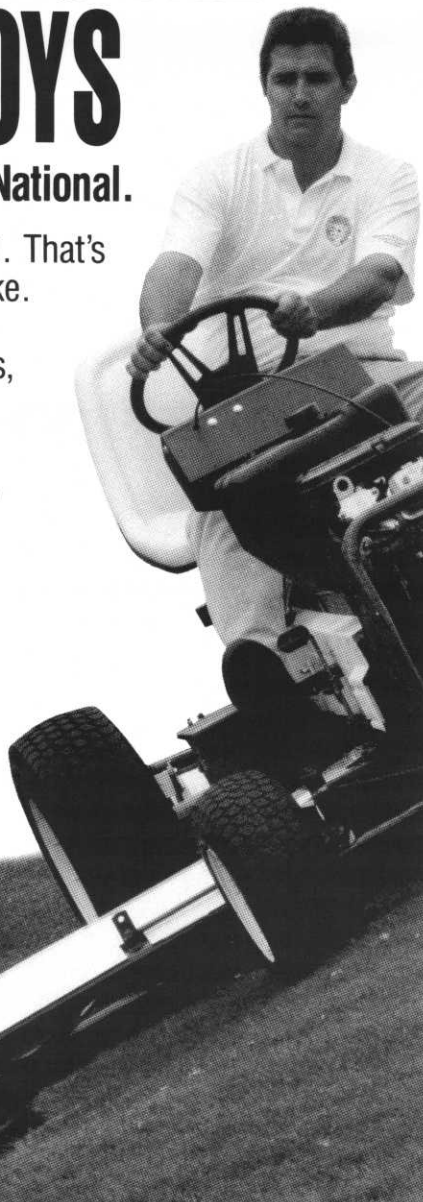
21" of reel outside the wheel. That's a claim the others can't make. With a National's flexible design, sand bunkers, curbs, or any trimming tasks are well within reach.

Call us, or your dealer today to try one on for size.

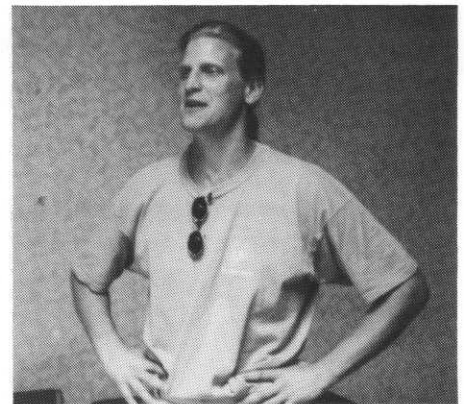
Distributed by
North Star Turf



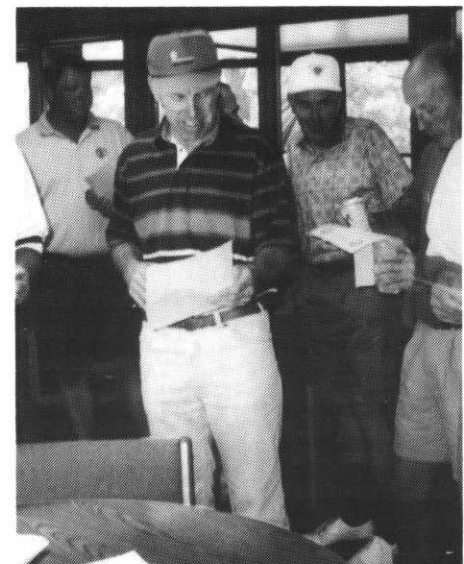
NATIONAL MOWER COMPANY
700 Raymond Avenue
St. Paul, Minnesota 55114
Phone: (612) 646-4079
FAX: (612) 646-2887



NATIONAL® is a registered trademark of National Mower Company.



Randy Miller, of Earthkeeper, spoke at the June meeting.



MGCSA members check out their teams and hole assignments.

CLASSIFIEDS

FOR SALE

Nearly Model #300 Lapping Machine

Contact: WILLIE KRAHN
Mountain Lake G.C.

(507) 427-2095

FOR SALE

- 35 Toro VT3 Controllers \$400.00
- Surge Control Panel \$500.00
- All Controllers are Panels only – No Pedestals
- Toro LTC Controller – Three years old
with complete Pedestal and Panel \$600.00

EXCELLENT CONDITION

- Recently Serviced for Lightning Protection
- 2 Core Pulverizers for Toro Aerators \$950.00 ea.

EXCELLENT CONDITION

Contact: CARY FEMRITE
Pebble Creek

(612) 261-4656

EQUIPMENT FOR SALE

- 1994 Toro Groundsmaster 325D, 2WD \$9,000
- 1994 Reelmaster 5100D, Fairway mower \$16,000
- 1994 Toro Hydroject \$15,000

All equipment like new. Very low hours.

Contact: James D. Gardner, CGCS
The Wilds Golf Club

612/496-0037

FOR SALE

- ★ 1990 Smith Co. Super Rake with Plow and Cultivator
\$1,000 or best offer

Contact: TOM PARENT
River Oaks G.C.

(612) 438-2707

FOR SALE

- ★ Yanmar 3-cylinder Diesel

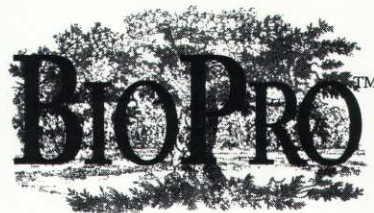
Contact: Steve Shumansky
Perham Lakeside C.C.

(218) 346-6071

**MGCSA MEMBER SUPERINTENDENTS MAY
RUN CLASSIFIED ADS FREE OF CHARGE.**

JUST CALL 1-800-642-7227 or 612/473-0557 or FAX 612/473-0576

TORO



**10% Discount On
"Summer Stress Management"
Products Until July 30**

★ **Maintain Root Depth and Mass** ★

Multi-purpose 6-0-0

*Improves Soil Fertility Characteristics, Resulting
In Increased Nutrient Retention*

Turf Iron 12-0-0

With Humic Acid.

An Excellent Organic Chelator of Fe

Potassium 0-0-30

Builds Stem Strength

Increases Plant Durability

Calcium and Magnesium

Increases Stress Tolerance in Plant

Turf Plex IV 20-2-3

Primarily a Nitrogen Source

With Compost-Derived Humates

Turf Plex VI 12-3-9 Granular Organic

With 56% WIN includes Ca, S, Mg, Fe, Mn and Zn

TECHNICAL BULLETINS / PROGRAMS AVAILABLE

**Liquid Products May Be Sprayed
Or Injected Through Irrigation**

ADDITIONAL PRODUCTS QUALIFY FOR DISCOUNT

FOR MORE INFORMATION

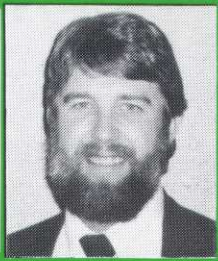
MTI DISTRIBUTING CO. **TORO**

PLYMOUTH HEADQUARTERS
Butch Greeninger
14900 Twenty-first Ave. No.
Plymouth, MN 55447-4655
(612) 475-2200 Ext. 202
1-800-362-3665

FARGO BRANCH
Dan Evavold
4310 Main Avenue
 Fargo, North Dakota 58104
(701) 281-0775
1-800-782-1031

EDITOR'S CORNER

By Tom Parent
River Oaks Golf Course



I am sitting in my new study at my family's new home in River Falls, Wis. We are surrounded by boxes and furniture that we are not sure we even want anymore, much less where to put it. We're dead tired but happier than we can imagine. We're home! My wife and I both grew up in cities, she in St. Paul and myself in Madison, Wis.

For six years we lived in Cottage Grove, Minn. It is a great community, lots of kids, good schools and neighbors that would give the shirts off their backs. Yet something was missing. I called my old city a city without a soul, a lot of great neighborhoods that did not add up to a whole.

Maybe it was that our "downtown" was a shopping mall. Maybe it was because there were no sidewalks to link the city together. Or maybe it was the transient nature of a large percentage of the residents. A lot of people going places and never planning on staying long.

Our new house was built in 1915 and is a block and a half from a real downtown. I walk around it, and even when our house is nowhere near as large, the movie *The Money Pit* comes to mind. My family and I can take walks together without having to be afraid of getting mowed down by cars because we're walking on the sidewalks.

The city seems to have some kind of magic. Everyone we've talked to loves this place. It's almost scary. You kind of get the feeling you should be looking for body snatcher pods in your bedroom because everyone seems so happy, including us.

* * * *

I hate to put this so bluntly but has this spring stunk or what? argh!!! When is it going to warm up? I'm writing this on the 6th of June and I don't think it hit 65 today with an on and off rain that doesn't do the soil moisture much good and kills revenue every bit as much as a three-inch soaker.

I fully anticipate that when you read this in July, it will have been our third week of 90 degrees plus and that we will be looking back on the cool weather we're grumbling about now with fond memories.

* * *

E-mail address change. My mailbox is now: tparent&pressenter.com . . . I will hold my old address for a month or so until I get new business cards printed. Being a cheddarhead by birth and education, I have been invited to join a news group for Wisconsin superintendents and turf educators. After a slow start the traffic of e-mail is picking up. Superintendents are asking each other questions ranging from the extent of winter kill to whether garlic sprays work for mosquitos (rumor has it that they do).

Speaking of computers, guess whose hard drive crashed as I started to put this month's edition together? Sounds like the dog at my homework, doesn't it? Fortunately for me the city of Cottage Grove has a computer expert on staff and she saved most of my files. At first we thought it was a virus as my system slowly went to pieces. Fortunately, most of the files that were lost were parts of my programs and not my work.

I keep telling myself to back-up my system and I keep putting it off. At home I have a 135 megabyte removable drive. It automatically backs-up my work every time I close down. Unfortunately, the city chooses not to afford such luxuries. Thus, a last minute *One Guy's Opinion* and a hastily prepared *Low Input*, doing the best I can from memory.

I do struggle over what I write and once I get it close to the way I want, I try not to even look at it. I will muck with an article forever if I don't draw the line. I had to learn this lesson the hard way. One of the companies I work with wanted me to write a two-page article on wetting agents and humates. I charge 75 dollars a page for this type of work and was happy for the diversion in mid-winter and the money.

I asked the supplier when he wanted it and his response was "Is a couple of hours enough time?" as he was leaving for England that day and wanted it for a publication over there.

Two hours later I faxed him an article that I considered good but needed a lot of work (like this *Editor's Corner*). He immediately called me back and said it was the best article I'd ever written bar none. After re-reading it a few times and trying to fix what I considered problems, I realized I was just mucking it up and the supplier was right.

* * * *

With the golf season in full swing, the chronic fatigue of summer, topped off by a move, a massive case of writer's block has moved into my house. I look at my very sick computer and look for the UPS truck to bring me a new drive and a winter's worth of writing locked away on several floppy discs.

JOB OPENING

Applications are now being accepted at LeSueur CC for the position of HEAD MECHANIC.

Responsibilities: Repair and maintain all equipment, keep accurate records of all maintenance and must be willing to participate in all golf course maintenance when necessary.

We are looking for someone with good mechanical aptitude, some golf course experience, and an aggressive approach to learning all aspects of all golf equipment maintenance. Compensation \$15,000-\$16,000 per year. \$100 per month insurance allowance and two weeks paid vacation.

Send applications to Barry Provo, P.O. Box 163, LeSueur, MN 56058.

We're Right on Par for What You Need!

Applications for All Areas of the Game.

Soil Solutions!

from *Floratine*

CalpHlex-

The Economical, Highly Soluble Calcium Chelate for Managing:

- Calcium Deficiency
- Magnesium Excess
- pH Balance
- Sodium Build-Up

Maxiplex-

The Concentrated Liquid Humic Acid for Better Management of:

- Compaction
- Nutrient Tie-Up
- Leaching
- Hot Spots

Floratine Products Group
129 S Main, Collierville, TN 38017
(901) 853-2898

FLORATINE PRODUCTS



#1 in BioStimulants

JUST FOR THE HEALTH OF IT!

- *ASTRON PLUS
- *PER "4" MAX PLUS
- *KNIFE PLUS
- *RENAISSANCE

and other patented hormone balanced auxiliary nutrient compounds promoting improvements in turfgrass:

- *Root Development
- *Stress Resistance & Recovery
- *Health & Quality

Decidedly Different in Design & Performance

ADVANCED SYNTHETIC TURF

The Look & Feel of Real Grass

- **Professional Putting Greens**
 - For New and Replacement Greens
 - Sand and Rubber Top Dressing for a Realistic look and Feel
 - 1 1/4 inches Deep
- **Turf For Woods & Irons**
 - For Driving Ranges and Tee Replacement
 - Special Top Dressing for Great Play
 - 2 - 2 1/2 inches Deep
- **Golf Mats for Driving Ranges**
 - 5ft x 5ft mat at 1 1/4 inches thick
 - Can be rotated for longer life
 - The BEST mats for The BEST Price

***Also Available for Tennis Courts*
and
*Sports Fields***

PROUD

to be a member



Platinum Tee Club

THANKS

to our many turfgrass management friends

FLORATINE

Creative Solutions for Turfgrass Management



179 So. Main/Collierville, TN 38017
(901) 853-2898

For More Information Call Dan or Rick at 612-934-1205
Superior Tech Products 80 W 78th St, Suite 135 Chanhassen, MN 55317