

Research Committee Update

By Fred Taylor

Research Chairman, Mankato Golf Club

Members of the 1996 MGCSA Research Committee met at the St. Paul Campus of the University of Minnesota on March 14 to discuss goals, objectives and potential areas of study for the coming year. The committee agreed that we would like to emphasize local research and renew our relationship with the University of Minnesota. The potential of the Rosemount (Empire Township) facility was also discussed. It was felt that if there was ever an opportunity to help turf research on a grand scale, this would be it. The committee will support this endeavor where it can.

Areas of study being considered for support this season

are as follows: 1) NTEP bluegrass trials at the St. Paul Campus; 2) Growth regulator/DMI Fungicide interactions; 3) Organic fertilizer comparisons; 4) Effects of introduced humates.

If you have any issues that you would like to see researched, please contact a committee member with your ideas. The Research Committee is comprised of John Granholt, Tom Parent, Butch Greeninger and Daryl Scheerhoorn with Bob Mugaas, Dr. Ward Stienstra and Dr. Phil Larson as advisors.

1996 MGCSA MONTHLY MEETINGS

Wednesday, March 13
MINI-SEMINAR
Ramada Plaza—Minnetonka

Monday, April 15
SOUTHERN HILLS GOLF CLUB
Host Superintendent: Wade Wiebold

Monday, May 13
BENSON GOLF CLUB
Host Superintendent: Dave Sime

Monday, June 10
HEADWATERS COUNTRY CLUB
Host Superintendent: Mark Fossum

Monday, July 8
IZATY'S GOLF & YACHT CLUB
GARSKE SCHOLARSHIP SCRAMBLE
Host Superintendent: Steve Schumacher

Monday, August 12
ST. CROIX NATIONAL
MGCSA CHAMPIONSHIP
Host Superintendent: Kevin Clunis

Sunday, September 15
MADDEN'S ON GULL LAKE
STODOLA RESEARCH SCRAMBLE
Host Superintendent: Scott Hoffman

Monday, October 7
FOX HOLLOW GOLF COURSE
Host Superintendent: Chuck Molinari

Wed.-Fri., December 11, 12 & 13
MTGF ANNUAL CONFERENCE
Minneapolis Convention Center



Par Ex[®]
introduces
a family of
mid-sized
fertilizer
grades
designed
to meet
the needs
of today's
closely-
mowed
turf.



par ex
THE EX STANDS FOR EXCELLENCE

Par Ex[®] and IBDU[®] are registered trademarks of Vigoro Industries, Inc.

**WHY MID-SIZE
GRADES FOR
CLOSELY-
MOWED TURF?**

BECAUSE fairway-sized particles are too large to apply to closely-mowed turf.

BECAUSE greens-sized products can be difficult to spread.

BECAUSE IBDU[®] is the most reliable, most consistent source of slow-release nitrogen.

For more information contact:

Precision Turf & Chemicals
7728 Commerce Circle
Greenfield, MN 55373
612/559-5293

Ken Quandt
Territory Manager
West Allis, WI
414/327-3993



One Guy's Opinion

By Tom Parent
River Oaks Golf Course

Dual Membership: *Whose Idea Was This Anyway?*

Alas, I've tried to generate a written debate and have found nothing but support. Time to pull out all the stops!!! I'll probably lose any chance for that seat on the GCSAA research committee I wanted, but here goes. . .

Where did the idea of dual membership come from? I find it unbelievable, in a country that prides itself on individual freedom, that we, as an association have agreed to this. In case you don't know what I'm talking about, dual membership was voted in as a new by-law by the delegates at the GCSAA conference in February.

The new by-law states that if you want to become a member of the GCSAA you must become a member of an affiliated local chapter. Conversely, if you want to become a member of a local chapter you must become a member of the national. In our Minnesota association that's a \$300+ bill for each of us and much of our staff if we want in the MGCSA.

The by-law grandfathers all current members the freedom of choice to belong to only the organization they choose to or can afford to belong to. All new members must join both associations. This smells like a freshly killed skunk on the yellow brick road to Kansas.

I can understand that to the all powerful Oz and his fellow wizards on the GCSAA board of directors, this may seem like a good rule. These guys come from the big clubs with big budgets. They have wanted to get their staffs signed up for the National, which is a noble goal. Now, they finally have the excuse they needed. I hope it doesn't backfire on them.

It's too bad that there are not one or two directors from nine hole courses with operating budgets of under \$60,000 elected to the GCSAA board of directors. If there were, this goofy idea would have never made it out of committee.

Are these people so far removed from the reality of the vast numbers of superintendents that struggle and fail to justify even their local dues to the owners of their clubs or boards? We don't know these superintendents, much less their views because they can't even afford the local chapter dues.

Now chances are even better we will never know them. If Oz and his fellow wizards had tried to dream up a rule to exclude the small and meek low budget clubs from the GCSAA and affiliated chapters, they could not have done it any better.

In all fairness the Bob-o-Links and other clubs that generously lend us their superintendents are so far removed from the reality of so many of us that they cannot see that this will preclude many good people from our association.

My golf course is a perfect example. I am blessed with two outstanding assistants that will most likely become superintendents in the next several years. The city we work for will not pay for national dues unless you are a department head.

The end result: New superintendents - 2. New members of the GCSAA? New members to the MGCSA - 0. The losers: My future staff, and the MGCSA. If we think this policy is not going to alienate the next generation of golf course superintendents in this country, I think we are mistaken.

All you Class C members out there, you already know that you just lost your last chance to influence the direction of what will be your association. A fairly clever strategy since you're the people this ruling will affect most and you will no longer have any say.

After all, if you believe the reasoning for the change in Class C voting rights, and I swear this is a quote: "They neither know or care what the delegates are voting on anyway." The arrogance in that reasoning is beyond my comprehension.

One bright spot is the cost for assistant membership was reduced by half to enable more assistants to join. I can't argue with that one. If we can afford to lose \$300,000, could this have not been done anyway?

Oops! I forgot to mention that we were told that this policy shift would cost the GCSAA \$300,000 this year. We weren't told the God knows how much it will cost in the years to come.

Heaven help us if the National loses the tenants in the much unpublicized addition to the emerald city they built in Lawrence several years ago. Could this money have been spent on research, or promoting our industry? How many of us have a clue as to what really goes on down there? I for one will be livid if our dues suddenly go up to cover this cost.

In discussions against this short-sighted policy, I brought up the fact that many clubs or potential new members will not be able to afford this. The response I got after I was repeatedly told it would not affect me, and again I swear this is the truth, "It's only \$210 and for a person making \$20,000 it is only one percent of their salary (they left out the words pre-tax when they stated this).

I couldn't believe my ears! How contemptuous an at-

(Continued on Page 33)

Dual Membership—

(Continued from Page 32)

titude can you have? My salary six years ago was within several thousand of the figure stated. With car payments, student loans, rent, food etc., buying hamburger was a luxury. That amount of money buys a lot of groceries; \$210 dollars may be pocket change to these guys but to someone with a family making \$20,000 pre-tax it's a lot of money.

The impression I had was, if they could not make the personal sacrifice to cough up the \$210, did we really want the freeloaders anyway? Where was their loyalty to Oz and the Emerald City?

Why was this done? We've heard the reasons. The GCSAA does all this cool stuff for us whether we're members or not. I've been told that this isn't fair that some superintendents might be out there freeloading on these great services.

The fact that some superintendents may have serious questions about how the Emerald City is run or disagree with the views of Oz and his fellow wizards, and choose not to be members was not mentioned.

Again, their freedom of choice has been taken away from them. If I was not grandfathered into this mess, I would quit the GCSAA and put up one hell of a fight to stay on the board and in the MGCSA.

They say the more members the national has, the more people, (i.e. voters) it represents in Washington. The nation-

al, whether we agree with them or not, has decided that they speak for all of us and we should pay for that privilege.

They're so uptight on this that they even have the board members out on traveling promo tours. Tommy Witt's appearance at our March meeting shows just how nervous they are.

In all honesty, the GCSAA does a lot of good things. Are they worth giving up our freedom of choice? The delegates to the National decided that it was. I wonder how the superintendents of American (not just GCSAA members) would vote if a referendum was held. If a bogus by-law such as this can be passed, perhaps it's time to relook at the whole delegate voting system.

Was the Rock Group Devo really right when they sang "Freedom of choice is what we've got... Freedom from choice is what we want"? We had freedom of choice and we gave it up. Now we have freedom from choice.

But don't worry, we can just relax and let our Big Brothers (Oz and his fellow wizards) on the GCSAA board of directors make all our local decisions for us. George Orwell, author of 1984, was only off in his prediction by 12 years for our organization.

For the \$210 paid by my employer, I want the National to continue doing what it does best and it does do an excellent job in many areas. What I don't want it to do is dictate rules and regulations to our local chapter.



Specializing in
**Re-Design & Construction
of Golf Courses**

*Consultants
Project Management*

Contact:
Gerald "Gary" Rohling

817 Gates Avenue
Elk River, MN 55330

(612) 441-5127
Fax (612) 441-3851

*Wherever
Golf is Played*

Golf Course Accessories

Ball Washers • Detergent • Mounting
Pipes & Bases • Tee Signs • Spike
Brushes • Hole Cutters • Flag Poles •
Flags • Cups • Rakes • Benches •
Tee Markers • Practice Greens
Markers • Whipping Poles • Course
Signage • And More.

Requested by players. Preferred by
course professionals. Specified by
designers and used with pride
wherever golf is played.

Call your Par Aide dealer today for
a FREE CATALOG, or call us for the
dealer nearest you: 612-779-9851.

©1995, Par Aide Products Co., St. Paul, MN.

CLASSIFIEDS

FOR SALE

1980 7-gang Reel Master with hydraulic transport frame and tractor.

6,000 hrs.

\$8,000 or BEST OFFER

Contact: DAVE SIME
Benson Golf Club

(612) 843-2109 or (612) 843-4117

FOR SALE

(2) Foley Reel & Bedknife Grinders
\$350.00 each or both for \$600.00

Contact Mark at Island View

(612) 442-2160

WANTED

Jacobsen Walking Greens Mowers
Contact Mark at Island View

(612) 442-2160

FOR SALE

- Toro VT3 and Toro VT4 Controllers (1988 & 1989 Models)
also: Surge Control Box (\$800)
also: Toro LTC Controller — Three years old (\$600)

EXCELLENT CONDITION

Equipped with pedestals — Most controllers have footings
Recently serviced for lightning protection
Approximately 15 VT4s (\$450 ea.) & 30 VT3s (\$400 ea.)
Available Fall '95 and Spring '96

- 2 Core Pulverizers for Toro Aerators (\$950 ea.)

EXCELLENT CONDITION

Contact: CARY FEMRITE
Pebble Creek

(612) 261-4656

WANTED

Reasonably priced Ball Retriever
Contact: Hengel Construction

(218) 746-3355

FOR SALE

Wittek-6 Basket Range Ball Picker with A-frame bumper attachment\$750.00

1976 Toro Greensmaster 3 reconditioned model. Comes with three quick adjust green to tee height cutting units\$1200.00

1987 Foley Bedknife Grinder Model 384\$400.00

Call **Charlie Pooch**
Les Bolstad University of Minnesota Golf Course

(612) 627-4138

FOR SALE

- 20 Litter Caddies Garbage Cans, 30 gal. with base .\$.30.00/ea.
- 9 Litter Caddies Garbage Cans, 9 gal. with spike\$.7.00/ea.
- 11 Bayco Kooler-Aid Stands, 2 yrs. old\$.95.00/ea.
- Ditch Witch R65 Trencher Max 6," w/front blade\$.3000.00
- 5-gang Spartan Mower, 1989\$.2500.00
- 2 Lesco 500, converted to triplex, 7-blade reels\$.1500.00 ea.
(set up for tees)

- 33 - 670 Series Sprinklers, drive assemblies w/noz...\$.40.00/ea.
- 20 Rakes, yellow wooded handles\$.2.00/ea.

BEST OFFER ON EACH ITEM WELCOMED

Brackett's Crossing Country Club
Contact: Tom Proshok / Brad Harne

435-2543

FOR SALE

1991 Toro GM345 with 72 inch deck.
2100 hours — VERY GOOD CONDITION

Includes Mulching Deck
\$7,300.00

Contact:
Troy or Len
Hudson Country Club

(715) 386-9262

FOR SALE

1984 Ransome 180
Reconditioned, sharpened, ready to go.

\$1,000 or make offer

Contact: Curt Pickar, Tartan Park

(612) 736-8793

FOR SALE

- (1) 10 ft. Lalstec Articulator\$4500.00
- (1) Jacobsen Blitzer 7-gang Rough Unit\$2500.00

Contact:
MAJESTIC OAKS

(612) 755-6530

MEMBER SUPERINTENDENTS MAY RUN CLASSIFIED ADS
FREE OF CHARGE... JUST FAX THE OFFICE AT 612-473-0576

CLASSIFIEDS

FOR SALE

★ 1979 200 Gallon FMC Spray Unit, 21' Boom
8 h.p. Telumseh Engine, Piston Type Pump Hose & Reel
Manual On-Off Valve.....\$900

★ 1982 Neary Model 200 Bedknife Grinder\$350

Contact: Stillwater Country Club
Don or Marlin

(612) 439-7760

FOR SALE

★ 1978 Toro Greensmower, 7-Blade Reels, Honda Engine,
Good Shape\$1,700 or best offer

★ Three 11-blade Toro Cutting units with Double Wiele
Rollers in excellent condition. These units have SPA
adjustment. Purchased new 1990. Asking \$600 per
cutting unit or best offer.

★ 1983 Ransome Motor 180 - New Wisconsin Robins
Engines. Excellent machine asking \$2,500.

★ Will consider trade for 4-Bolt Adj. Greensking Reels.

Contact: Steve or Scott
Owatonna Country Club

(507) 451-4144

FOR SALE

★ 1990 Smith Co. Super Rake
with Plow and Cultivator
\$1,800 or best offer

Call:

(612) 438-2707

FOR SALE

Ryan Greensaire II Aerator
Greensaire Core Processor

Contact:

Mountain Lake Golf Course(507) 427-3869
or Willie Krahn, superintendent(507) 427-2095

TURF EQUIPMENT SALE!!

12 Cushman Turf Truckster Trade-Ins from Madden's
Resort & Golf Club in Brainerd. Plus: Sprayers, Mowers,
Sand Trap Groomers and other miscellaneous items.

To be sold at Madden's Parking Lot.

Wed., April 10th. • NOON - 5:00 p.m.

For information, call: John Olson at Cushman Motor Co.

(612) 333-3487 • 800-759-5343

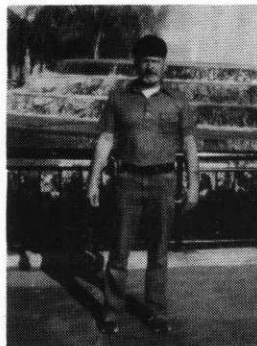
WHERE ARE THEY NOW?

Neil W. Draz

By Jack Kolb

Some talented individuals go through this world unobtrusively leaving a wide wake of accomplishments.

Neil Draz is one of those individuals and many of you are saying "Who is He?" Neil came out of the St. Paul Park system and was the superintendent at Phalen Golf from 1971 until his retirement in 1987.



Neil Draz

Neil Draz has always intrigued me by his appearance in areas of "high culture" such as the Ordway Theater, Walker Art Institute, Tyrone Guthrie Theater and Minnesota Orchestra

Hall. Neil says the sightings were happenstance but he does try to diversify his entertainment.

Neil's amalgam of talents began when he was in high school and found a job in the old Onyx Dental Laboratories at 4th and Minnesota Street in downtown St. Paul. He started out as an errand boy running crowns, partials and dentures of all types to local dentists. Before going into the Navy in 1945 he had worked his position up to being the technician who vulcanized the "Ivories" to the dental plate. Upon discharge from the Navy in 1947, Neil went to work for "Reid H. Ray" film industries.

Old timers remember the local studio as the source of training films — also for the many short advertisements that were run on the screen before the feature movie in theaters nationwide. Shortly thereafter television became prominent and began casting about for technicians in their industry.

KSTP channel 5 television needed a talented person to operate its new film processor. Neil Draz was one of the few persons around with that talent and got the job.

With protective guilds that had quickly moved into the industry Neil soon found that he had a lot of daylight time on his hands and wanted a little more fresh air. He took a test as a park aide and was soon on his way to a new career, all the while continuing to do film processing at KSTP studio.

Neil Draz was the supervisor and Golf Course Superintendent in charge of reconstruction of the Phalen Golf Course which took from 1974 until 1976 at which time it reopened.

Neil and his wife Carol will celebrate 47 years of marriage this summer.

MEMBERSHIP REPORT

NEW MEMBERS—MARCH 13, 1996

	Class
Shane Eastman Pomme de Terre Golf Club C	
151 Sunnyslope Rd., Bldg. 311 Morris, MN 56267 W: 612-589-1009	
Mikkel Larson Mn. Riverland Tech. College ST	
1123 3rd Ave., S.E., Apt. B-5, Rochester 55904 H: 507-289-8499	
Jeffrey Erickson Anoka-Hennepin Tech. College ST	
1488 Farrington St., St. Paul, MN 55117 H: 612-489-1997	
Thor Larsons Minnesota Valley C.C. D	
10005 Greenbrier Rd., #103, Minnetonka 55305 W: 612/884-8733	
James Balogh, PhD. Spectrum Research, Inc. Assoc.	
211 Mygatt Ave., Duluth, MN 55803 W: 218-728-3459	
Wayne R. Kussow University of Wisconsin E	
3213 Todd Drive, Madison, WI 53713 W: 608-263-3631	
David Grant Grant Golf F	
162 Woodfield Bay, Winnipeg, Man. R3R 3B1 W: 204-832-9303	
Bryan Wood Commercial Turf & Tractor F	
P.O. Box 724, Chillicothe, MO 64601 W: 800-748-7497	
Donald Chelmo MTI Distributing Co. F	
6911 46th Place N., Crystal, MN 55428 W: 612-537-3098	
Mike Bentson MTI Distributing Co. F	
Box 9132, Fargo, ND 58106 W: 701-234-9135	
Dean Chaltas MTI Distributing Co. F	
14550 96th Ave. N., Maple Grove, MN 55369 W: 612-420-3031	
Gerald Sunde Sunde Engineering, Inc. F	
4200 W. Old Shakopee Rd., Bloomington, MN 55437 W: 612-881-3344	
Erik Christiansen EC Design Group, Ltd. F	
1105 6th Street, W. Des Moines, IA 50265 W: 515-240-6621	
Sam Monson Monson Consulting, Inc. F	
4525 Tonkawood Rd., Minnetonka, MN 55345 W: 612-933-4638	

RECLASSIFICATIONS—MARCH 13, 1996

Harold Newville Retired A to AA
Allan Richard Hanson Viking Meadows C to A
Michael Brower Hillcrest Country Club C to A
Thomas Stout Deep Tine, Inc. B to F
David Lundeen Deep Tine, Inc. C to B
Michael Bohnenstingl Minnesota Valley C.C. C to B

David Sime, Membership Chairman

MINNESOTA DEPT. OF AGRICULTURE WASTE PESTICIDE COLLECTION PROGRAM

APRIL — NORTHWESTERN MINNESOTA REGION SCHEDULE AND FACILITIES

COLLECTIONS FROM 9:00 a.m.-1:00 p.m. DAILY

Mon., April 1

County Highway Garage, Cty. Rd. 1 • Fergus Falls

Tues., April 2

County Highway Garage, 8th and U.S. Hwy. 75 • Breckenridge

Wed., April 3

County Highway Garage, 329 9th St. • Hawley

Thurs., April 4

County Highway Garage, 200 E. State St. • Detroit Lakes

Fri., April 5

Fire Hall, Minn. Hwy. 108 E. • Ottertail

Turfing the Net—

(Continued from Page 38)

the net. These are also good services for those addictive personalities mentioned above as the price of extra hours is very high.

If you think you will spend more time on the Internet, a private server will probably be more economical. Many have various service plans that range from as little as five hours a month for under five dollars to unlimited service. The price of extra hours is around one dollar. Check the prices in your area. If a server's price is too good to be true, there is probably a good reason for it. If a server has more customers than it has phone lines and modems to handle them, you will have difficulty getting on their system. Some good questions to ask would be how often is the system maxed out and when. Then run the system for a week or so before you start giving your E-mail address out.

Excellent Home Pages for Turf

Excellent home pages for turf are:

<http://www.wisc.edu/phstest>

The phs stands for plant health services and was developed by the Plant Pathology Department at U.W.—Madison to be used in a seminar on "Turfing the Net." It contains hyperlinks to useful home pages relating to turf and other subjects such as: weather services, congressional E-mail addresses, etc. Eventually, it will have sections on landscape plants, entomology, etc. This home page doesn't always load, if you have trouble try:

<http://www.wisc.edu>

and use the hyperlink text Plant Path.

<http://www.scgt.oz.au/page11>

The above is a home page that has numerous hyperlinks to turf-related home pages and data sites.

My E-mail address for those *Hole Notes* articles is: tparent@minn.net
Happy surfing (turfing).

Poly-S™ Fertilizer Plus Pendimethalin The Perfect Combination

What do you get when you combine the most effective preemergent with an exclusive polymer-encapsulated sulfur-coated fertilizer?

Scotts Poly-S™ based pendimethalin products. The most efficient and cost effective way to prevent weeds and fertilize your turf. For details, call your



ProTurf Tech Rep

Leif Erickson, Territory Sales Rep
Tel: 800/728-0354

Mike Redmond, Territory Sales Mgr.
Tel: 612/422-0785

or 1-800-543-0006 today.



Paskvan Consulting

Route 1 Box 77A
Akeley, MN 56433
218-652-3542
Fax 218-652-2949

Where Success is Never an Accident

Specialists in Soil and Plant Nutrition
Tailored to Golf Courses and Sports Turf

Services Provided:

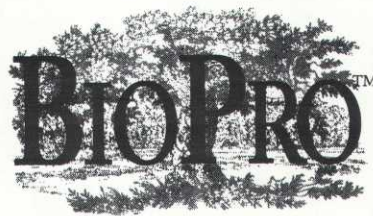
Complete inventory of the soils on the course or job site
Sampling, analyzing, delivery and interpretation of the results to eliminate guesswork

Help find corrective fertilizer materials to save money

Physical analysis on sand-soil-peat to determine proper mixing for greens and topdressing

Fast turn around time, yet quality is never compromised

TORO



10% Discount On "Spring Green Up" Products Until April 30

- ★ Increase Root Depth and Mass
- ★ Build Carbohydrate Reserves for Summer Stress Management

Bio MP 5-3-2

*Carbohydrate Based Soil Conditioner
Enhances Root System*

Multi-purpose 6-0-0

*Improves Soil Fertility Characteristics, Resulting
In Increased Nutrient Retention*

Tuff Greens 0-0-13

*Potassium Source with Calcium and Silica
For Increased Wear Tolerance and Green Speed*

Turf Iron 12-0-0

w/Humic Acid. An Excellent Organic Chelator of Fe

Potassium 0-0-30

*Builds Stem Strength
Increases Plant Durability*

Calcium and Magnesium

Increases Stress Tolerance in Plant

Turf Plex VI 12-3-9 Granular Organic

w/56% WIN includes Ca, S, Mg, Fe, Mn and Zn

**Liquid Products May Be Sprayed
Or Injected Through Irrigation**

ADDITIONAL PRODUCTS QUALIFY FOR DISCOUNT

FOR MORE INFORMATION

MTI DISTRIBUTING CO. **TORO**

PLYMOUTH HEADQUARTERS
Butch Greeninger
14900 Twenty-first Ave. No.
Plymouth, MN 55447-4655
(612) 475-2200 Ext. 202
1-800-362-3665

FARGO BRANCH
Dan Evavold
4310 Main Avenue
Fargo, North Dakota 58104
(701) 281-0775
1-800-782-1031

EDITOR'S CORNER

By Tom Parent
River Oaks Golf Course



Turfing the Net Confessions of an Info Junky

I finally took the jump and signed up for the Internet. After three nights of "surfing" I found myself becoming depressed. In 10 hours of probing, most of which was learning how to run the program, I had uncovered more data bases and home pages than I could explore in a month, much less read. The wealth of information is mind boggling. I began by typing in Turf, a few seconds later I had one hundred listings. Each was a home page that you could Hyperlink (net term that means in essence a call transfer) to other home pages which had hyperlinks etc. etc. etc.

It wasn't long before I was "talking" to computers in China; Oxford, England and Canada. And that was just the World Wide Web (WWW). There is also Gopher, developed by the University of Minnesota and other programs (search engines) that search other Internet sites that are not on the WWW. There are Chat lines that you can send in your problem, or great ideas, too. People from around the world can respond or try and help and vs/vs. If you really want to get excited, type in weather!

E-mail

This is probably the most useful advantage of being on the net. E-mail is electronic mail by which you can send letters across the world. E-mail will probably replace the fax in ten years. As the *Hole Notes* editor I need to harass people for articles. One of the first questions that is asked by anyone at the university, usually after a not very encouraging groan, is if I have an E-mail address. That's how these people communicate. They check their E-mail first, then they read their mail while they're on the phone and if it has stopped ringing long enough, they check their phone messages. Then if the phone doesn't ring again, they do their best to reply and if you're not out on the course they can get in touch with you. E-mail eliminates the game of phone tag.

If you need information, this is how you can get it. All someone needs to do to respond is hit the reply function on their program, type in a message and hit send . . . done. No paper, no stamp, no mail room, no postal service and no huge phone bill. Most university Home pages have a faculty directory of their staff's E-mail addresses. You could send me articles you've written for *Hole Notes* on E-mail.

When enough superintendents in Minnesota have Internet hooks, for a small investment, the MGCSA or the

MTGF can set up its own home page. This could have several advantages. When (if?) the University of Minnesota builds the turfgrass research station, regional disease warnings, ET data, weather forecasts, etc., could be posted daily and prevent unnecessary spraying. We could have our own "chat line" where we could communicate with each other regularly without the expense of long distance. If one of us found a product or combination of products that worked on a disease that is plaguing us, it could be posted and a lot of trial and error saved by everyone else. The possibilities are endless and the cost would be minimal.

Downside to the Net

If you thought you knew a lot, you'll find out you don't. It also sucks up time like nobody's business. Several times when I've come up for air and look at a clock, it was 1:00 in the morning. If you have an addictive personality, sign up for a program that costs you dearly if you run over your monthly time allotment. That way, if you're not mesmerized, the cost will be nagging away in your head and force you to shut down. Pornography, it's on the Internet. In the Internet book I purchased, it listed a home page that downloads 5 million megabytes (that's alot!!! — a small library!) of porn a month. Not something you would like your kids viewing. Fortunately, programs are coming out that can block this type of unwanted material.

How to Get on the Net

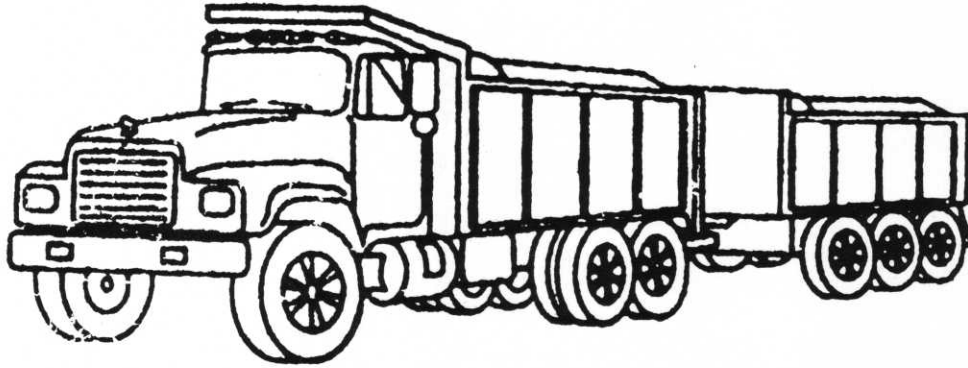
First, you need a computer with a modem. A 14.4 modem is fine if you are just downloading text. If you are downloading alot of graphics, you will want a 28.8 modem. These are almost always fax modems, so you will have a built-in fax. You will be able to receive faxes. However, you will be limited to sending material you've generated on your computer. I've been told that 8 megs of ram or more is best and will speed up the process of connecting and downloading home pages.

If you're looking for a family computer or upgrading, from the experience of running an Apple Macintosh at home and an IBM compatible at work, the Mac is the only way to go for a family; however, software selection is more limited and harder to find. Major software companies will not put out a Mac version of a program unless the PC version sells well. Until the Windows 96 communication package comes out later this year, running Internet programs on a Mac is far superior for now.

Next you will need what is called a server. America Online, Compuserve, Genie, etc. are national services that will allow you to get on the Internet, E-mail etc. There are also regional private servers which you can subscribe to that charge a flat fee for Internet access. The company I'm hooked up with charges around \$25 a month for unlimited time.

By making an 800 call, America Online, Compuserve, etc. will hook you up and give you five to 10 hours free. This is a good way to find out if you are interested in being on

(Continued on Page 36)



LEITNER COMPANY

*Specializing In Soils For Golf Course
Maintenance & Construction*

Soil mixing and processing specialists.

Supplying the Golf Course Industry with soil
and sand products for over 50 years.

From 10 yards to 10,000 yards — material
to specification for topdressing and construction.

Quality — Reliability — Experience

MIKE LEITNER

LEITNER COMPANY

945 Randolph Avenue
St. Paul, Minnesota 55102

(612) 291-2655

PROUD SUPPORTER OF RESEARCH AND EDUCATION THROUGH THE MGCSA