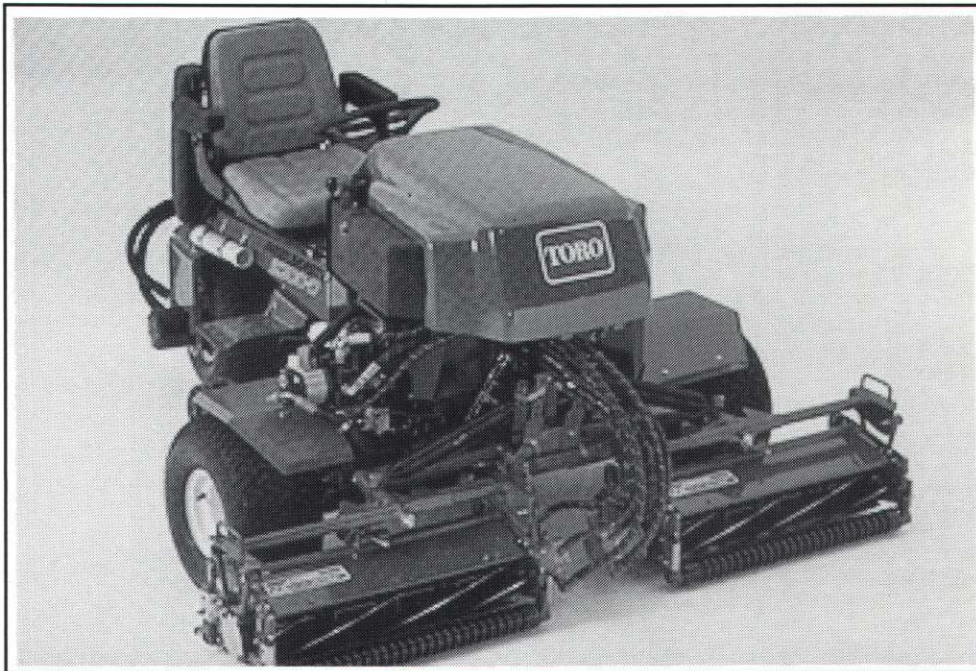


TORO

Reelmaster[®] 2300-D

- Hydraulic Reel Drive
- Diesel Liquid-Cooled Engine
- 3-Wheel Drive



This new generation utility mower incorporates the most successful features of Toro's trusted Reelmaster products for an unsurpassed cutting performance.

- Hydraulic-driven Reel System w/Interchangeable Reels
- Patent Pending L-I-N-K-S™ Cutting Unit Suspension System
- Variable Reel Speed Control
- Large 18 hp Diesel Engine
- 3-Wheel Drive with Large Tires
- Open Service Accessibility
- On-Board Backlapping

CALL MTI AND TEST THEM TODAY

MTI DISTRIBUTING CO.

TORO

14900 21ST AVE. NO., PLYMOUTH, MN 55447
(612) 475-2200 • 1-800-362-3665

Baker National G.C. To Host '95 MGCSA Championship

Baker National Golf Course will host the 1995 MGCSA Golf Championship on Monday, August 14. The championship 18 was designed by Dr. Michael Hurdzan, and playable the fall of 1990. It was constructed in two phases. Holes 9-18 were opened in 1989. After these holes were opened, the original Baker Park course was rebuilt to form holes 1-8.

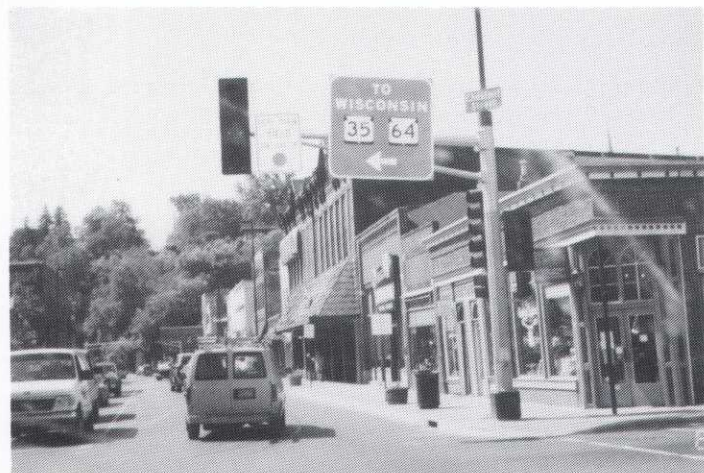
The course is somewhat demanding off the tee, but like most courses poses no special problems if you keep the ball in the fairway.

The awards dinner will take place immediately following golf at the Medina Entertainment Center. Medina is located on Highway 55 just a few minutes from the golf course and will be a great place for members to share stories and libation.

Pat Walton has worked hard on the dinner program and we would encourage any member, who can't make it to golf, to join us at Medina.
— Keith Greeninger



Discussing golf strategies, from left, are Butch Greeninger, MTI Distributing; Russ Adams, Life Member; Bill Cox, Tianna Country Club, and Gerald Bibbey, Goodrich Golf Course.



MGCSA President Kevin Clunis sees this sign every morning on his way to work.

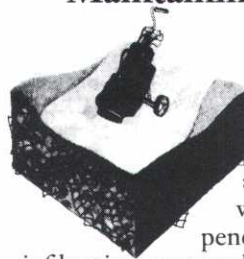
Turf grass scientists created a term to describe the unique mechanism they identified whilst examining the performance of *Netlon Advanced Turf* plots.



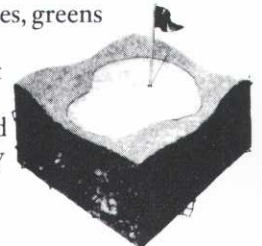
Self-cultivation

Self-cultivation (n. the effect of small polypropylene mesh pieces as they flex within a free-draining rootzone material to create and maintain voids and to resist soil compaction. The mechanism takes place as the surface is compressed during play, maintenance or by other activities.

Maintaining health and minimising damage



You will not find the term self-cultivation in any dictionaries at the moment, but you will find evidence of its effect on tees, greens and paths. There will be deeper root penetration, higher infiltration, greater divot resistance and faster recovery rates due to the stability and root anchoring provided by the elements.



Netlon
ADVANCED TURF

Netlon is the registered trademark of Netlon Limited in the UK, the USA and other countries.
Netlon Advanced Turf is patented in the UK, the USA and other countries.

Specialist in turfgrass, golf course construction and reconstruction. Supplier of washed and unwashed Bentgrass, Bluegrass, Poa Supina turf, Netlon mesh elements and soil mixes.

GLENN
REHBEIN
COMPANIES

8651 NAPLES ST. N.E.
MINNEAPOLIS, MN 55449
PH (612) 784-0657
FAX (612) 784-6001

**At $\frac{5}{64}$ " ,
you could
be so close
and yet so
far away.**

At superfine cutting heights, every aspect of your mower's performance is accentuated. For better or worse. And the same goes for greens play.

That's why Jacobsen puts so much into every Greens King™ walk-behind. Exceptional side-to-side, front-to-rear balance. A compact roller base for immaculate cutting. And only Jacobsen has the patented Turf Groomer® greens conditioner, for faster, truer and healthier greens.

When it comes to performance—when it comes to results—no other greens mower family can make this cut. For more information, and a complete demonstration, contact us today.



Our 500 series walk-behind greens mower family includes 18", 22" and 26" models to handle everything from severely undulating greens, to tee boxes and collars, flawlessly.

THE PROFESSIONAL'S CHOICE ON TURF.



3080 Centerville Road
St. Paul, MN 55117

NORTH STAR TURF, INC.

(612) 484-8411
(800) 592-9513

JACOBSEN
TEXTRON

Jacobsen Division of Textron Inc.

Williams-Gill

Office (715) 425-9511
Facsimile (715) 425-2962



& Associates

Golf Course Architects

Garrett Gill, Principal

Williams, Gill of Wisconsin
421 North Main Street
River Falls, WI 54022

• Services •

- New Course Design
- Master Plans
- Golf Practice Center Design
- Environmental Planning
- Irrigation Design
- Renovation & Restoration
- Site Planning

When It Comes to Turf Management...

NOBODY KNOWS
LIKE YOUR
WILBUR-ELLIS PRO

- ★ Quality Products
- ★ Environmental Leaders
- ★ Regulations/Services
- ★ Trouble Shooting
- ★ Fertility Programming
- ★ Diagnostic Work
- ★ Leaders in Environmentally Favored Packaging
- ★ Best Technical Services

Yes



Your one-stop shop for all turf management needs. Ask about our complete line of chemicals, fertilizers and seed.

Wilbur Ellis...dedicated to quality, customer service and environmental stewardship.

FOR MORE INFORMATION CONTACT:

SHANE ANDREWS

612/723-0151 or 1-800-592-9513



The Penn Pals

Creeping Bentgrass

• **Penncross**

The world standard

• **Penneagle**

For the finest fairways

• **PennLinks**

Upright, grainless greens

• **PennWay**

Blended for fairways

• **PennTrio**

Penncross, Penneagle, PennLinks certified blend for tees, greens and fairways

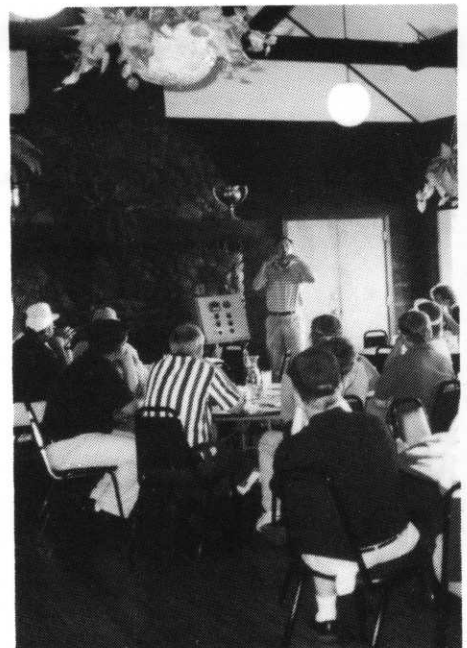
CONTACT:

JOHN GLATTLY

TWIN CITY SEED CO.

MPLS., MN

(612) 944-7105



Tim O'Connor, P&H Warehouse, was the lunch time speaker at Bemidji T&CC. Tim spoke about variable frequency pumps.

An Opinion...

Dear Board of Directors:

In the June '95 issue of *Hole Notes* it was mentioned that the scholarship committee has been looking at the possibility of a legacy scholarship. Though I feel that the idea has been moving forward with good intentions, I do not think it is something the MGCSA should fund, sponsor or administer. Competition for the scholarship could create some hard feelings and bitterness within the membership. If a company or organization outside MGCSA would want to fund and administer this type of scholarship, like Scotts does for GCSAA, it may be worthwhile to pursue. At Baker I solicit a donation from the Men's Club to the Scholarship and Research Fund, telling them that the money is used for turf-related projects which will provide long-term benefits to the golfing community. I don't think this money should be used for a general scholarship.

Our scholarship program has been very successful in the past but it might be time to rethink how the program relates to the objectives of our organization. Developing highly qualified individuals and sending them out into a saturated marketplace doesn't make sense to me.

These are just my opinions but I feel very strongly that these issues should be thoroughly discussed amongst the membership before any action is taken.

Sincerely,

Keith Greeninger
Golf Course Superintendent
Baker National Golf Course

President's Reply...

Dear Keith:

Thank you for your letter with concerns regarding the MGCSA Scholarship Program. Feedback from the membership is very important on issues that affect the association. Input from communications like this helps the Board of Directors on decision making on various issues.

In regards to the potential Legacy Award, which is a scholarship for sons and daughters of MGCSA members, the Board is still discussing all concerns on this new endeavor. We will not initiate the award until the Scholarship Committee has made its final recommendations. The Board does feel that this type of an award is a membership benefit and will follow through until a decision is made. Regarding your comments about our present saturated job market, I find that a benefit by being able to hire more qualified and trained staff.

The MGCSA does appreciate your soliciting funds for research contributions from your Men's Club. I would hope more superintendents would do the same. Remember, the MGCSA Scholarship is completely and totally independent from the MGCSA Research, so that the funds you solicit are put wholly into the research account.

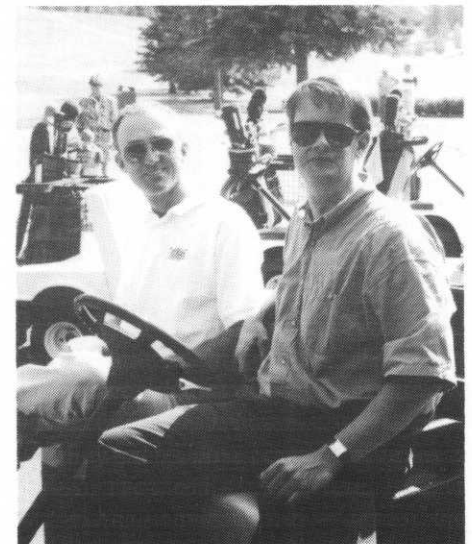
If you have any further comments or questions, please feel free to contact me or any other board members.

Sincerely,

Kevin Clunis, CGCS
President, MGCSA

1995 MGCSA MONTHLY MEETINGS

- | | |
|---------------|--|
| July 10 | Indian Hills G.C. & Stillwater C.C.
Host Superintendents - Dick Grundstrom
and Marlin Murphy - (<i>Garske Scramble</i>) |
| August 14 | Baker National Golf Course
Host Superintendent - Keith Greeninger
(<i>MGCSA Amateur Championship</i>) |
| Sept. 11 | Minikahda Club & Town & Country Club
Host Superintendents - Douglas Mahal and Bill Larson
(<i>Stodola Scramble</i>) |
| October 9 | Chisago Lakes Golf Estates
Host Superintendent - David Zimmer |
| Dec. 6, 7 & 8 | MTGF/MGCSA Conference and Trade Show
Minneapolis Convention Center |



Host Superintendent Tom Johanns, Bemidji T&CC, gives Dave Caldwell, Minneapolis Golf Club, a tour of the course.

PICKSEED • PAR EX • K-POWER • NATURE SAFE • HOWARD JOHNSON'S • HYDRO-WET RTA •

PRECISION



Turf & Chemical Inc.

A Specialty Chemical,
Fertilizer and Equipment Distributor

3145 Sycamore Lane North • Plymouth, MN 55441-2700

Office 612.559.5293 • 1.800.925.8873 • Fax 612.559.5002

VERTI-DRAIN • BAYLETON • BAYLETON • SYSTEC • DACONIL ULTEX • FUNGO • VORLAN DF • MERIT • ROUT • LAKE COLORANT WSP

TRIPLET • WOODACE • PETERS • FUTERRA EROSION MAT • PINHIGH • SOIL ANALYSIS • BAYCO • TURF MARK • PANASEA

CHEM-PRO SPRAYERS • VERTI-SEED • TRIMEC CLASSIC • SPYKER • TERRAFLOW • DISSOLVE

CLASSIFIEDS

HOST SITES NEEDED

We are in need of host sites for the July (Garske Scramble) and August (MGCSA Championship) in 1996. Please check your schedules and reconsider if you would be able to host either of these events. If you can host either event please contact Pat Walton, Arrangements Chairman, 400 Evergreen Road, Hamel, MN 55340. The phone number is (612) 478-2179.

FREE TREES

Over 2000 6-10 ft. trees are available free of charge at Wedgewood Valley Golf Course. Bring a shovel or scoop and bring the trees home. Available trees include Ash, Linden, Scotch Pine, Caragan, Maple, High bred Poplar and wind-break bushes.

Contact:
Jerry Webb
459-0288

FOR SALE

- ★ Olathe PTO Driven Chipper..... \$2,500.00
- ★ Toro VT2 Central Control System,
Clocks and Pedestals Negotiable

Contact:
Scott Austin
Midland Hills CC
(612) 631-1545

MGCSA OFFICE HOURS

7:30 a.m. — 4:00 p.m.
Monday through Friday

Metro Area Phone..... 612/473-0557
Outstate Toll Free..... 800/642-7227

24-hour Voice Messaging Service Available

BIO PRO™ TORO

MTI and Toro are committed to providing environmentally responsible products to keep your golf course green, healthy and safe.

Liquid Fertilizer Nutrients

Application by:

- Spraying
- Irrigation Injection

Turf Iron (12-0-0) Nitrogen with 8% Iron Supplement. Rated "best performance of all tested" by Colorado State University.

Multi-Purpose (6-0-0) Soil Conditioner that increases root activity and increases CEC.

Bio Plex MP (5-3-2) Contains simple carbohydrates, humic acids, natural biostimulants that are excellent products for sterile sandy soil with low CEC and low water holding capacities.

Dry Fertilizer Nutrients NATURAL ORGANIC BASED

TURFPLEX V (22-2-3)
TURFPLEX VI (12-3-9)

- Eliminates growth surges
- Reinvigorates soils with low levels of biological activity.

Green and Fairway Grades Available

Tissue Testing Service

TEST RESULTS FAXED BACK THE SAME
DAY SAMPLES ARE RECEIVED.
INQUIRE

FOR MORE INFORMATION
Call **BUTCH GREENINGER**
612/475-2200 ext. 202

MTI DISTRIBUTING CO. **TORO**

14900 21ST AVE. NO., PLYMOUTH, MN 55447
TOLL FREE: 1-800-362-3665

EDITOR'S CORNER

By Tom Johnson
New Richmond Golf Club



Stan Kincaid sent me an article out of FYI, a supplement to Forbes Magazine, entitled, 'Golf Inc.: The War For Golf's Soul.' It was written by James Y. Bartlett and it describes golf as a big business and how golf ownership companies can "maximize the assets" to turn a financially troubled course into a cash flow machine. This is no doubt true, but I feel uncomfortable when Wall Street lingo is used in describing the golf industry.

Things like economic downturns, corporatization of golf, golf courses as corporate entities and money-making assets. The author has some reservations about this scenario. He sees an upward creep of the green fee as more and more of "maximizing the assets" takes place. The article says perhaps the bean-counters in charge may drift towards standardization in the games, while sacrificing personality and character of golf courses. How about making all the bunkers uniform in size and shape so each can be raked in 48.7 seconds for efficiency? By increasing the diameter of the hole to six inches, approximately 42% more putts will be made, thereby shortening the time-per-round coefficient allowing an additional seven foursomes per day to tee off.

It all seems to take some of the fun out of the game. But why do I get the feeling that some of today's golfers mirror that philosophy?

There was a letter to the editor of the *St. Paul Pioneer Press* recently in which the writer vented his displeasure on the cost of playing golf. He was looking for 40 acres to build a golf course where the working man could afford to play the game.

I hope the 'Mom and Pop' operations never franchise.

Why is it that some golfers throw cans under trees? They probably think it's not really littering, but at the same time it makes it more difficult to pick up. Do these same people do that sort of thing anywhere else?

* * * *

The golf course being built at the Snowcrest ski area is progressing very well. Kevin Clunis reports that construction is actually ahead of schedule. What side of the fence are you on Mr. President?

* * * *

Several courses had turf loss this past winter/spring and by this time have recovered by reseeding or letting the *Poa annua* do its thing. Greens covers may have contributed to the problem in some situations. Every so often we are reminded of what can happen to the *Poa annua* and rye when the going gets rough. Any superintendent who experienced turf loss and consequently did some renovation could share their experience by writing an article for 'Hole Notes.'

Serious accidents on the golf course are rare but the possibility of one occurring is always on the back of your mind. A few weeks ago (May 23), Wayne Willey, a long-time employee of the New Richmond Golf Course, was hit in the eye by a golf ball. A golfer heeled a shot on the tee and it hit him before he had a chance. Wayne has gone through two surgeries at the U of M to try and save some vision. Wayne is the mechanic, and those of you that have been without a mechanic for a period of time know how valuable they are. It was a tragic accident and I hope everything turns out okay for Wayne. We sure miss him!

* * * *

Thanks to Tom Johanns and his crew for hosting the June meeting. So far he's the winner in the beautiful weather department. We had to go to northern Minnesota to get away from the rain and snow, but what nice country and what a nice golf course! There were over 70 people signed up for the meeting. How could you go wrong with a sunny day and a beautiful golf course? **Bemidji Town and Country Club and Tom** deserve our thanks and appreciation for a wonderful time.

* * * *

There was some nice compliments from the LPGA on the condition of Edinburgh USA. It was great to see one of the players, Val Skinner, comment on how good a job the superintendent had done with the greens. *St. Paul Pioneer Press* sports writer Charlie Walters put **Tom Fischer's** name with her comments as being the superintendent. Congratulations to all those at Edinburgh.

Grow With Us™!



New construction or course renovation, contact LESCO for premium performance turf seed varieties and 18-24-12 starter fertilizer with PolyPlus® SCU. To obtain more information on LESCO turf products contact your LESCO Professional Golf Representative or call (800) 321-5325.

LESCO™

LESCO and Grow With Us are trademarks of LESCO, Inc.
PolyPlus is a registered trademark of LESCO, Inc.

Wanted!



Used
CARRYALLS
and other
Utility Vehicles

Now is the time ...

To trade off that used **CARRYALL** or other utility vehicle for a NEW "95" **CARRYALL**. We have a very long list of resorts, campgrounds, and cabin owners waiting for your trade. We'll buy your old and save you on your new.



**Minnesota Golf Cars
and Utility Vehicles**

CARRYALL

951 EAST 79th STREET BLOOMINGTON, MINNESOTA 55420
(612) 853-9836