

# Ride A Reliable Reelmaster® 5100-D...

...with Toro's  
Exciting, New  
Automated  
Control  
Electronics...



...and you'll experience an advanced  
standard of lightweight fairway mowing!

#### **AUTOMATED CONTROL ELECTRONICS (ACE)**

With the 5100-D, Toro introduces Automated Control Electronics, ACE™. It's a revolutionary control system for specialized turf equipment, yet a proven technology that increases equipment reliability, functionality and serviceability. *Try it and see for yourself.*

#### **AUTOMATED CLIP CONTROL**

With ACE, Toro also presents Automatic Clip Control, ClipACE. Reel speed is automatically adjusted according to mowing speed for an ideal relationship that optimizes cutting efficiencies as it accommodates varied turf conditions. *Try it and see for yourself.*

#### **SUPER EASY SERVICING**

The 5100-D aims to keep you *on* the course, not in the shop, with high-tech reliability built-in for trouble-free operations. One self-contained hydraulic manifold serves to eliminate the need for individual valves and their plumbing to give you simplified controls and reduce the possibility of leaks.

*Put an ACE in your hand...and see how simple it is!*



**MTI** DISTRIBUTING CO.



14900 - 21ST AVENUE NORTH • PLYMOUTH, MINNESOTA 55447  
PHONE (612) 475-2200 • FAX (612) 475-0351 • TOLL FREE 1-800-362-3665



# HOLE NOTES

Official Publication  
of the  
Minnesota Golf Course  
Superintendents' Association

## 1992-93 MGCSA BOARD OF DIRECTORS

### Officers

President . . . . . Greg Hubbard, CGCS  
Manitou Ridge Golf Course  
612/777-1436

Vice-President . . . . . Joe Moris  
Tartan Park Golf Course  
612/733-3472

Secretary . . . . . Jim Gardner  
Rochester Golf & Country Club  
507/281-3241

Treasurer . . . . . Kevin Clunis  
Stillwater Country Club  
612/439-7760

Ex-Officio . . . . . Rick Fredericksen, CGCS  
Woodhill Country Club  
612/473-5811

### Directors

Tim Commers . . . . . Cushman Motor Co.  
612/333-3487

Cary Femrite . . . . . Pebble Creek GC  
612/261-4656

Steve Garske . . . . . Par Aide Products Co.  
612/779-9851

John Granholt . . . . . Eau Claire Golf & CC  
715/836-8422

Richard Grundstrom . . . . . Indian Hills GC  
715/836-8422

John Harris . . . . . Lafayette Club  
612/471-0341

Tom Kientzle, CGCS . . . . . Grand View Lodge  
218/963-7732

Bill Whitworth, CGCS . . . . . Northfield GC  
507/645-6879

Dale Wysocki . . . . . Faribault Golf & CC  
507/334-5550

### EDITORIAL COMMITTEE

John Harris, Chairman  
Tom Kientzle, Co-Chairman

### EDITOR

John Harris

### ASSOCIATE EDITOR

Tom Kientzle

### Editorial and Business Office

Scott Turtinen, Executive Director  
Minnesota Golf Course  
Superintendents' Association  
240 Minnetonka Avenue South/P.O. Box 617  
Wayzata, Minnesota 55391-1617  
TEL: 612/473-0557 • FAX: 612/473-0576  
TOLL FREE: 800-642-7227

## FROM THE PRESIDENT'S DESK

### Lean Times Raise Questions



As the nation's economic engines sputter to life after being idle so long, many people are now reviewing the values of their personal and business financial decisions. They are reassessing their actions to meet the leaner economic times of the day. We at MGCSA have not escaped this evaluation process.

During the past few months, the over-riding concern expressed to me by our members is the value of their membership. They question the costs of their membership dues, education fees and other charges for services provided by their Association. Some feel we are paying too much for the services received and would like to lower member fees. Others are concerned that quality services are not being delivered within our current fee structure. Consequently, meeting member needs has become a balancing act to insure quality services at a fair price.

We must remember that a professional image requires resources beyond financial considerations. Integrity, vision and participation are all added ingredients in enhancing our position as recognized leaders in the turfgrass industry. Price alone must not be the determining factor in our decisions if professionalism is truly our goal.

\* \* \* \*

It is with great regret that I announce the resignation of Norma O'Leary, Silver Bay Country Club, as a member of our Board of Directors due to personal reasons. In filling the Board vacancy, I followed previous protocol and have appointed the next highest vote-getter from our most recent annual election. I am proud to once again welcome Dale Wysocki, Faribault Golf & Country Club, as our new Board Member and am looking forward to serving with Dale over the next two years.

\* \* \* \*

I would also like to once again thank Turf Supply Company, Cushman Motors, Leitner Company, MTI Distributing, and North Star Turf for sponsoring our Hospitality Night at our annual conference last November.

\* \* \* \*

Hope to see you soon at our pesticide applicator recertification seminar, March 10, at the Northland Inn.

— Greg Hubbard, CGCS  
President



HOLE NOTES is published monthly except bimonthly December/January, February/March for \$10 per year by the Minnesota Golf Course Superintendents Association, 240 Minnetonka Avenue South, Wayzata, MN 55391-1617. Ralph Turtinen, Publisher. Application to mail at second class rates is pending at Wayzata, MN. POSTMASTER: Send address changes to HOLE NOTES, 240 Minnetonka Avenue South, Wayzata, MN 55391-1617.

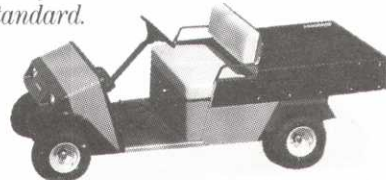




Until now, most utility trucks have been better known for carrying repair bills than materials. Our new line of four utility trucks—built Jacobsen tough from end to end—changes all that.

For example, the 2315 has a durable 23.5 hp liquid-cooled diesel, 5-speed transmission with reverse and heavy-duty automotive-type clutch, creating a new standard of dependability.

The 2315 packs a 1,500 lb payload. Unlike other utility trucks, it comes complete with heavy-duty hydraulic dump box, removable side panels and tailgate, implement PTO, lights, full hydraulics and complete instrumentation—standard.



Our rugged line also includes the 20 hp gas model 2015 and the 1,000 lb payload, gas powered 810 Express and electric 610 Express. For maximum versatility and productivity, the 2315 and 2015 can be out-

fitted with sprayer, top-dresser, aerator and spreader attachments. If you already have attachments, our universal mounting kit lets you use them on either truck.

To see them in action, ask your Jacobsen distributor for a demonstration today.

**JACOBSEN  
TEXTRON**

Jacobsen Division of Textron, Inc.

THE SHARPEST THINKING ON TURF.

**BUILT BECAUSE OTHER  
UTILITY TRUCKS JUST DON'T  
GO FAR ENOUGH.**

J-15-0



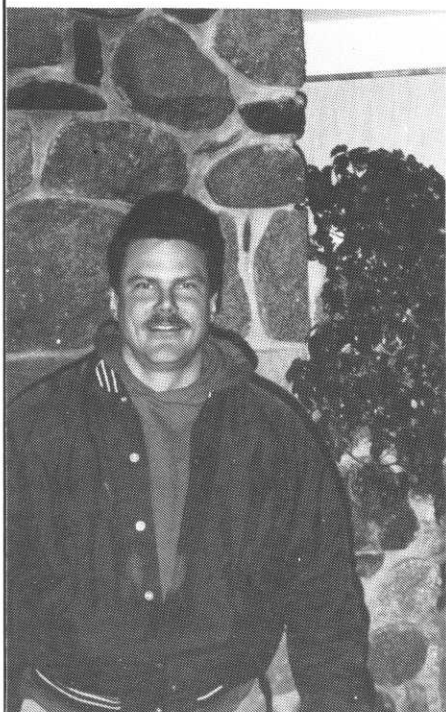
3080 Centerville Road  
St. Paul, MN 55117

**NORTH STAR TURF, INC.**

*"We Initiate Satisfaction"*

(612) 484-8411  
(800) 592-9513

## Izaty's Winter Meeting Host



Steve Schumacher

# 1993 MGCSA Schedule

Mankato Golf Club .....	April 19
Fox Hollow Golf Club .....	May 10
Lafayette Club .....	June 14
Research Turf Tourney .....	June 18
White Bear Yacht Club .....	July 19
The Links at Northfork .....	August 9
Stodola Tourney @ Hillcrest Country Club & (TBA) .....	Sept. 13
Eau Claire Country Club .....	Oct. 11
Annual Conference @ Northland Inn .....	Nov. 17, 18 & 19

# ↑ chipco® 26019 FLO

## NOW AVAILABLE IN 15 GALLON RETURNABLES

- No Triple Rinsing
- No Container Disposal
- Environmentally Correct
- Available through Wilbur-Ellis

FOR MORE INFORMATION CONTACT:

**LARRY THORNTON**

612/723-0151 or 1-800-642-2736



IDEAS TO GROW WITH®



# 1993 National Convention Report

By JOHN HARRIS, Editor



Greg Hubbard, Manitou Ridge, and Joe Moris, Tartan Park, present Jim Latham, USGA, a research check.

The opening session at the Hilton in Anaheim was well-attended, and the presentation given by the GCSAA Board of Directors, with William Roberts, CGCS, chairing the session, was an example of dedication, professionalism and direction regarding the past, present and future.

The video shown on two large screens, accompanied with excellent audio, covered virtually every aspect that confronts superintendents today.

The awards presentation was highlighted by the first ever Environmental Steward Awards. Clay Loyd assured me that the upcoming issue of *Golf Course Management* will cover this in detail, and by now many of you already have received and read all the details.

The Distinguished Service Awards went to Dr. James A. Beard and Dr. Victor Gibreault. The Leo Feser Award was given to John Baranski, CGCS. John is the author of "Surviving Japan's Rainy Season."

The Student Essay Contest winners were Gary Harshman, Bethesda CC, Maryland; Nicole Schwehr, Apple Creek CC, Bismarck, N.D., and Michael Echols, a senior at Lake City Community College.

The President's Award was presented to the Audubon Cooperative Sanctuary Program for Golf Courses. I know of some facilities in our area that participate in this program. This award is a reflection of its success through your participation.

Then along came Johnny Bench, the keynote speaker. Mr. Bench provided a humorous outlook on life while playing "in the show" and thereafter. While listening to his presentation, I could get a feel for his attitude and beliefs. It was easy to see why this man is successful in everything he does.

The concurrent sessions were most informative with professors heading up "Golf Course Management Techniques" and Managing Today's Environment." I particularly enjoyed Dr. Beard's presentation on "Rolling Greens" as he spoke before a standing room only audience.

The show opened on Thursday, and the usual throngs besieged the exhibitors. It was difficult to see it all in a day, but I covered as much ground as possible and saw many new features, particularly in pesticide application equipment.



IDEAS TO GROW WITH®

*Distributors for these professional products for turf, aquatics & ornamentals—*

Applied Biochemists • Cutrine  
Brayton • Blended & Homogenous Fertilizer  
Clearys • 3336, PMAS, Spotrete  
Tuperzan, Manzate 200  
Gordons • Trimec, Betasan, Tri-Mec Bent, Teremec S.P.  
ICI • Gro Safe  
Miles • Oftanol, Bayleton, Dyrene, Tempo,  
Bayleton 25 P.V.A.  
Noram • Nitroform, Banol, Prograss, Nutralene,  
Prostar W.P.  
Harris labs • Soil • Water Testing  
HPI • Evergreen Covers  
Sustane - Natural Organic Fertilizer  
Brandt • Turf Mix • Turf Mix Plus • Chelated Minors  
Ciba-Geigy • Banner, Exhibit, Alamo, Primo, Sprint 330  
Subdue WSP

For more information, contact...  
LARRY THORNTON  
612/723-0151 or 1-800-642-2736



DowElanco • Turflon, Dursban, Gallery, Confront  
Balan, Surflan, Rubigan, Team, Cutless  
Hoechst • Acclaim  
Grace-Sierra • Vorlan, Duosan, Calo-Clor, Hydraflo,  
Once, Peters, Penstar  
Monsanto • Roundup, Dimension  
Rhone Poulenc • Chipco 26019, Ronstar, Sevin,  
Alliette WDG  
Fermenta • Daconil, Dacthal  
Wilbur Ellis • Bivert • R-11, Trifol, Defommer  
Riverdale • Triamine, Jet Spray, Dissolve, Triplet  
Price Lawn • Spreaders  
Becker Underwood • Spray Dyes • Turf Mark  
Van DeHave (Advanta) - Grass Seed  
BASF • Vantage, Curalan, DF, Basagran, Drive

# Golf Courses and Environmental Images

By **JEFF MARLATT**  
*Golden Valley Country Club*

Golden Valley Country Club has been a member of the Audobon Cooperative Sanctuary System since 1991.

The system is an international program coordinated by the Audobon Society of New York State. Its purpose is to create awareness and involvement in wildlife and environmental conservation activities where people live, work and recreate.

As all of us in the industry know, golf courses across the country have received more than their fair share of criticism for their relationship with the environment. The Cooperative Sanctuary System gives us the opportunity to develop an environmentally positive image.

Here at Golden Valley Country Club, we have a nesting box program in place for bluebirds, wood ducks and purple martins. We are also using wooded areas, creek and pond banks, and railroad right-of-ways to provide natural cover and food sources for many different varieties of birds and mammals. We have been working on an Integrated Pest Management Program and will continue to do so in the future.

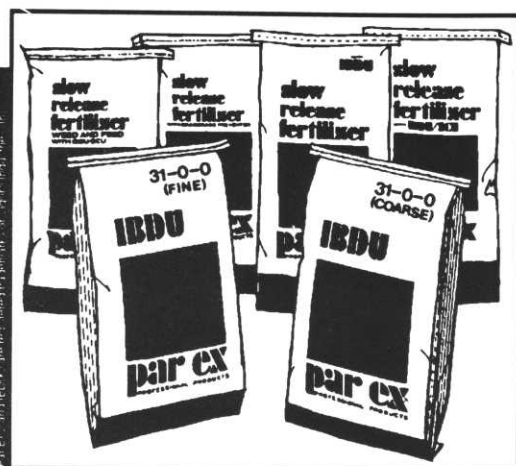
This winter we decided to start a winter bird feeding

program. We took a rather unique approach to this project which we would like to share with you.

While investigating our options, we discovered that the bird feeders on the market were not only too small for what we had in mind, but they were quite expensive. We decided to design and build the feeders ourselves. After an afternoon at the drawing table and a trip to the lumber and steel yards, we were ready to get started.

The end result was a two-sided, cedar bird feeder which holds 30-35 pounds of sunflower seeds. The feeder mounts onto a 5-foot-high steel post, which in turn bolts onto a permanent cement footing in the ground. The feeder is easily filled, very durable, attractive and will provide a constant source of food for many winters to come for our fine feathered friends. Total cost of materials for one feeder is about \$65.00 which is very reasonable.

Anyone interested in getting more information about the bird feeder or the Audobon Cooperative Sanctuary Program can contact Mike Olson or Jeff Marlatt at the Golden Valley Country Club Grounds Department.



## Why the Ex stands for Excellence... in professional turf care.

- Contains environmentally-oriented, non-leaching IBDU® slow-release nitrogen.
- Regionally formulated blends to meet your agronomic needs.
- Not dependent on soil temperature or microbial activity.
- 100% available nitrogen in a single growing season.
- Non-hydroscopic; flowable product.
- Non-burning; low salt index.

**Ed Long**  
Specialty Products  
Territory Manager  
913/897-5604

**Precision Turf  
& Chemicals**  
Plymouth, MN  
612/559-5293

**Turf Supply  
Company**  
Eagan, MN  
612/454-3106

# Government Relations Update

By KEVIN CLUNIS

*Co-Chair, Environmental & Government Relations Committee*

Once again, I have been appointed to serve on the Environmental Committee as co-chair with Jim Gardner. Jim's responsibilities will be with the compliance guideline book. My responsibilities will be working on current legislative duties.

You may know by now that the issue most concerning golf courses is posting of pre-and-post application of pesticides. This will affect both commercial and non-commercial applicators. This issue came about from two areas.

**First**, this issue surfaced last year at the tail end of the legislative session. With quick actions and testimony from Scott Austin of Midland Hills and others from the green industry, we were able to defeat the measure in a senate sub-committee. The bill, authored by Senator Marty, D-Roseville, was promised to be reintroduced in the next session, but with help from the green industry.

**Secondly**, the Attorney General's office is involved due to a number of complaints from homeowners on advertising claims of LCO (Lawn Care Operators). With the issue now in the open, a December 16 meeting was scheduled with members of the green industry, including myself, the Attorney General's office and an aide with Senator Marty. The meeting was used as an informative session to address several issues in the bill. I do have to inform the golf course superintendents that the majority of this session was directed toward the commercial applicators.

**At the end** of this four-hour meeting we discussed the non-commercial (golf course). I stated that our Environmental Committee had already recommended to its members to post signs at the entrance to the club house and at the first and tenth tee. This was the same recommendation we gave Senator Marty last year. This is also the same position that the GCSAA has taken. I am sure this information will be on the new bill.

**The biggest discussion** at the meeting was about concerns of pre-notification. I was amazed through the discussions of the other green industry representatives, how well they did on pre-notification. The bill will likely have wording on something of a 48-hour pre-notification. I explained the situation on the golf course that 48 hours is unacceptable because of varying environmental conditions, amount of play, scheduling conflicts, financial implications and reducing applications.

As the green industry representatives pointed out, they could not always get in touch with their customers, even after adding additional staff to do so. Also discussed was the pre-notification of abutting property owners. Adding this to the issue only causes more problems. The Attorney General's Office is looking into developing a "Sensitivity Register." This would be an official list mailed out annually so the LCO would know whom to notify. This register is in place in at least 20 states. The greatest number of registered people in any one state is about 300. These people who would be most likely to be on this list have already been in contact with you about your pesticide applications. This registry would probably make pre-notification much easier for golf course superintendents. At the conclusion of the meeting, we were given no assurance that any or all of this information would be used in forming this bill. Isn't government wonderful?

As of this writing we have not heard of any action on this proposed bill. We did ask Senator Marty's aide to send us a copy of this bill so we can ex-

*(Continued on Page 9)*

LAST CHANCE  
TO PLAY

HOCKEY

Thursday, March 11

11 a.m. — 1 p.m.

at

Augsburg Ice Arena

Any association member is welcome to play. Ice time is courtesy of Associate members. Join us for pizza at Davanni's after the contest.

## RTJ Tourney Nets \$40,000 For Scholarships

A record \$40,000 contribution to the Robert Trent Jones (RTJ) Endowment, a scholarship fund for students planning careers in golf course management, has been announced by the Golf Course Superintendents Association of America (GCSAA).

The contribution came from the 1992 RTJ Team Invitational Golf Championship held annually at Metedeconk National Golf Club in Jackson, N.J.

Proceeds from the tournament, including team entry fees, hole sponsorships and other donations, were contributed to the RTJ Endowment, which is operated by the GCSAA Scholarship & Research (S&R) foundation.

In four years, the tournament has netted more than \$120,000 for the endowment.

Both the endowment and the tournament are named for golf course architect Robert Trent Jones, Sr., Metedeconk's chief designer and a longtime supporter of educational opportunities for superintendents.

The tournament is the creation of Metedeconk founder Richard Sambol; his son, club chairman Herb Sambol and superintendent Stephen G. Cadenelli, CGCS.



# Government Relations Update—

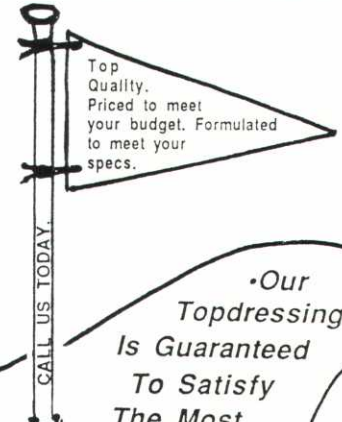
(Continued from Page 8)

press our opinions to make sure it will work, but yet no word. We will keep you posted. Over in Wisconsin, Ag Amendments 29, was passed with support of the Wisconsin GCSA. This was also a posting law. Details of the issue will be included in the next update.

Other issues that may come up in this session include delaying the Container Disposal Law that goes into effect in 1994 back to 1998 and ACCRA fees to go up (as part of your pesticide license).

The other main objective I have as government liaison is to network with superintendents who work or live in key legislative districts. What I hope to accomplish is that we have the opportunity to meet our legislators and be able to talk to them on bills that concern our industry. I will give out full information on how to meet your legislator and some techniques on how to retain this professional relationship. Your cooperation will be commended and recognized by your peers. If there is anyone else out there who would like to participate in this project, contact me. Also, if you have any questions or comments about anything, please contact me.

## TOPDRESSING




Top Quality. Priced to meet your budget. Formulated to meet your specs.

CALL US TODAY.

*•Our Topdressing Is Guaranteed To Satisfy The Most Fastidious Superintendent.*

BULK PEAT AVAILABLE



NORTHWOOD, IA 50459

(515) 324-1063

Offices in Northwood, IA, and Lake Mills, IA

## RANDALL TRANSIT MIX CO.

## TURF SUPPLY COMPANY

**2797 EAGANDALE BLVD. EAGAN, MN 55121**


**Suppliers of Fertilizers, Seed and Chemicals to the Turf Industry**



RHÔNE-POLLENC

### chipco

26019 Flo




### DIMENSION

Turf Herbicide  
Monsanto


### STANDARD GOLF

Pro Line



### ISK

Daconil  
2787 Flo



### Country Club

7-3-22 w/Team

### Spring Valley

20-2-5 w/Team

### par ex

21-2-6 w/Team

(612) 454-3106

1-800-551-4857





# Here's The Wonderful Workman™ 3000 That Will Really Work Well For You!



**NEW**

- Get 3-Wheel Maneuverability with the stability and capacity of a 4-wheel vehicle
- Haul bulkier, heavy loads
- Increase productivity

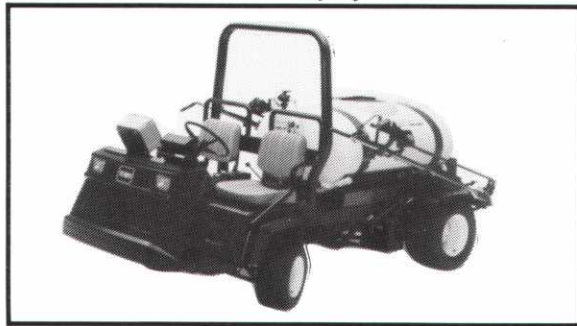
*Moreover, it's reliable  
quiet and loaded  
with standard features!*

### Most Cushman® Attachments Fit

This serious work vehicle in the "Truckster®" class offers more flotation, less compaction and does more work of all kinds in many combinations.

### Coming Soon

Toro 200 Gallon Low Profile Sprayer



Workman with Spreader



And  
It's  
Backed  
By Our  
Tradition  
Of  
Customer  
Satisfaction



1/3 Bed with Stake Sides and 2/3 Dump Box



Toro Full Bed with Cushman® Core Harvester™



**MTI** DISTRIBUTING CO.

14900 - 21ST AVENUE NORTH • PLYMOUTH, MINNESOTA 55447  
PHONE (612) 475-2200 • FAX (612) 475-0351 • TOLL FREE 1-800-362-3665