

Environmental Checklist—

(Continued from Page 12)

Pesticide Mixing/Loading Area

Do you monitor the soil in the area used for mixing and loading the pesticides? It may be advisable to conduct soil testing for pesticide and nitrate residues in the mixing area. EPA will most likely start testing these areas at golf courses and in similar agricultural settings in the near future. In addition, mixing/loading pads will probably be required for golf course operations by 1994.

Superintendents should start gathering information now and figuring the costs of such pads into future budgets. Some states, such as Iowa, already have mixing/loading pad requirements in effect.

Water Protection

Do you regularly test your ponds for pesticide and nitrate contamination? Some states now require the testing of golf course ponds. Testing is one way to reassure concerned citizens that your golf course is not polluting water sources. (Some ponds drain into streams that eventually leave the golf course.)

It is extremely important to protect streams or water bodies that eventually flow into potable water sources. In Texas, for instance, there are hefty fines for those who pollute tributaries of water bodies used for drinking water supplies.

Do you have emergency procedures in place to protect water sources in case you have a pesticide spill? Workers should be trained on how to contain chemical spills, and a supply of absorbent packets should be on hand.

FOR SALE

1979 Toro Rake-O-Vac
22 HP Wisconsin Twin Cylinder Engine
Completely Rebuilt in 1990

Fully Operational-Ready to Pick Leaves

\$5,000.00

Contact: Dale Caldwell
The Minneapolis Golf Club

(612) 544-4474

EarthWay's

TOUGH

COMMERCIAL SPREADER



Model C2200APP

Designed and built for the rigors of tough commercial use, an especially dependable spreader for the money.

FEATURES:

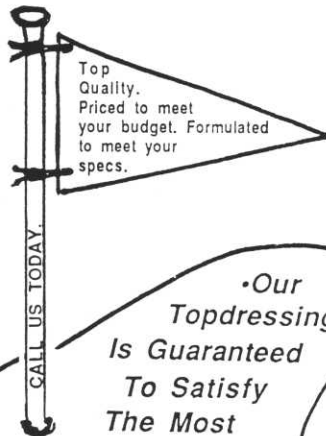
- Large 50# capacity hopper
- Strong painted steel frame
- Stainless steel axle and twin double nylon bushings for long life
- Jumbo 13 x 5.00-NHS turf tread tires
- Twin stainless steel spread pattern adjusting plates

All these features and more make this model a spreader you can depend on year after year.

Contact: Paul Jones... 1-800-950-4288

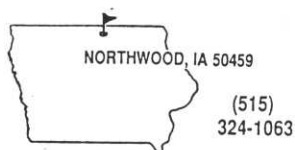
Tee Shot Marketing, Inc.
P.O. Box 487 • Pequot Lakes, MN 56472

TOPDRESSING



•Our
Topdressing
Is Guaranteed
To Satisfy
The Most
Fastidious Superintendent.

BULK PEAT
AVAILABLE



**RANDALL
TRANSIT MIX
CO.**

Offices in Northwood, IA, and Lake Mills, IA

Scotts® fluid fungicide line is what you need to fight turf diseases

Turf troubled by diseases? One of the ProTurf® Fluid Fungicide products will help:

- **Fluid Fungicide** prevents and controls dollar spot, brown patch, red leaf spot and pink snow mold
- **Fluid Fungicide II** prevents and controls *Pythium* blight and damping off, brown patch and dollar spot
- **Fluid Fungicide III** prevents and controls anthracnose, leaf spot, dollar spot, brown patch and pink snow mold

Ask your ProTurf® Tech Rep for details.



MIKE REDMOND
Executive Tech Rep
612/422-0785

LEIF ERICKSON
Tech Rep
1 800/543-0006



July 18, 1992

To The Editor of Hole Notes:

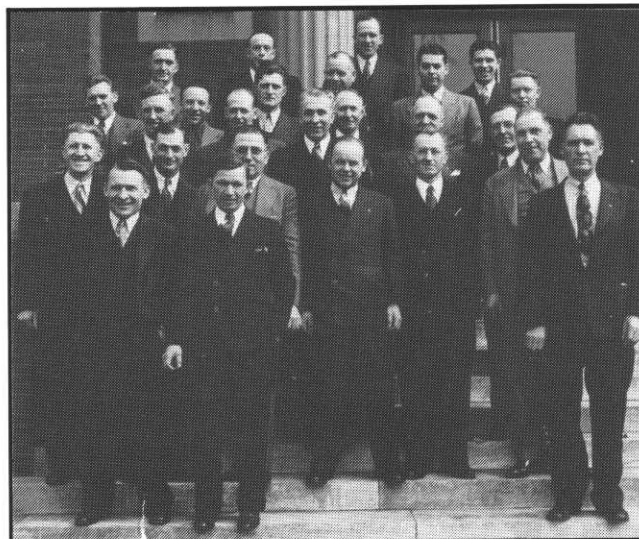
I read Bob Feser's account of growing up on a golf course. I, too, am the son of a Greenskeeper. My dad, Carl Erickson, came to Theo. Wirth (back then it was Glenwood Golf Course) back in 1919 and built the nine holes making the course 18 holes.

He retired in 1949. I started at Theo. Wirth in 1946 and became superintendent of Theo. Wirth in 1952, retiring in 1978.

I also have a lot of memories of sand greens and buckets of white sand to make a tee. At Golden Valley Golf Course, where I caddied, there were bird houses around all the greens to eat the worms and insects, and the caddies had to dig dandelions on the fairways.

We've come a long way.

*Maynard Erickson
(who named Hole Notes)*



CHARTER MEMBERS (some names not available)—Bottom Row: (l to r) Leo Feser, NA, NA. Second Row: Emil Pika, Carl Anderson, NA, Harold Stodola, NA, L. Nelson. Third Row: Gil Foster, Emil Anderson, NA, NA, Dick Rushavic, Joe Rush, Carl Erickson, NA, NA, Art Thowd. Top Row: NA, Matt Burns, Ben Johnson, Jimmy Graham, Greg Luching, NA.

Note: Carl Erickson was the first "greenskeeper" at Theo. Wirth Golf Course for 30 years. Emil Anderson was second. Maynard Erickson was the third for 32 years.

MGCSA's new 800 number is

1-800-642-7227

Metro area use 473-0557 only

Nine Students Receive GCSAA Legacy Award Scholarships

The winners of the 1992 Legacy Awards scholarship competition have been announced by Golf Course Superintendents Association of America (GCSAA) Scholarship & Research, Inc. (S&R). The students, all children or grandchildren of GCSAA members, will each receive a \$1,500 scholarship award for the next school year.

William R. Roberts, CGCS, president of the GCSAA S&R board of trustees, said that, "the judges told us that they were very impressed with the overall excellence of all of the applicants this year. The nine winners are really the cream of the crop."

The 1992 Legacy Award recipients are:

Tracy L. Claffey, daughter of Michael E. Claffey, superintendent at Cape Fear, CC, Wilmington, N.C.

Jess D. Edison, son of David L. Edison, superintendent at Watertown CC, Watertown, S.D.

Christy S. Harris, daughter of James D. Harris, CGCS, superintendent at Chickasaw, CC, Bartlett, Tenn.

Stephen J. Hope, son of Robert W. Hope, CGCS, superintendent at Kalamazoo CC, Plainwell, Mich.

Jane J. Shermer, granddaughter of Edwin T. Mattson, Folkston, Ga.

Kara Thuemmel, daughter of Kurt Thuemmel, CGCS, superintendent at Walnut Hills CC, Haslett, Mich.

Tracy L. Timmerman, daughter of James W. Timmerman, CGCS, superintendent at Orchard Lake CC, West Bloomfield, Mich.

Meredith D. Warner, daughter of Dennis H. Warner, superintendent at Kenwood CC, Cincinnati, Ohio.

Laurie Wilcoxon, daughter of Steve Wilcoxon, superintendent at Ponca City CC, Stillwater, Okla.

The Legacy Awards competition is open to children and grandchildren of GCSAA members. Students are evaluated based on academic excellence, extracurricular activities and an essay describing their impressions of their parent's or grandparent's career as a golf course superintendent. Student applications are evaluated each spring by an independent panel of university educators and administrators.

GCSAA Scholarship & Research, Inc., is a nonprofit foundation that serves the scientific and educational needs of golf course superintendents.

LESCO

Has it! Everything you need for professional turf management.

- Fertilizers •Control Products •Seed
- Irrigation •Equipment •Replacement Parts •Golf Course Accessories •Safety Products
- Service Brochures • Low Voltage Lighting

(800) 321-5325
Your Growth Partner

LESCO, Inc., 20005 Lake Rd., Rocky River, Ohio 44116

FIVE STAR
☆☆☆☆☆
DEEP
AERIFYING CO.

HAS THE BEST OF BOTH WORLDS!!!

We are a custom contractor selling aeration services using the

VERTI-DRAIN®

- Deep Aerification with semi-conventional tines
- Maximum depth of 12"
- Allows you to change the soil profile of your greens

— OR —

TORO HYDROJECT®

- Quality Aerification using ultra high pressure water
- Allows you to aerate any time of the growing season

The two

Leading Aerifying Tools

being used by the

Leading Aerifying Company

**WHEN YOU NEED DEEP AERIFICATION
THINK FIVE STAR!**

1-800-873-1455

Keith Faber

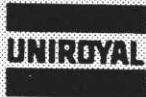
TURF SUPPLY COMPANY

2797 EAGANDALE BLVD. EAGAN, MN 55121

Suppliers of Fertilizers, Seed
and Chemicals to the
Turf Industry



26019 Flo



TERRACLOR 75WP



(612) 454-3106

GRACE SIERRA
CALO CLOR - CALO GRAN



TERENE B SP

Country club
10-18-18



JAQUATROLS
FOLICOTE

W-A-CLEARY
PMAS

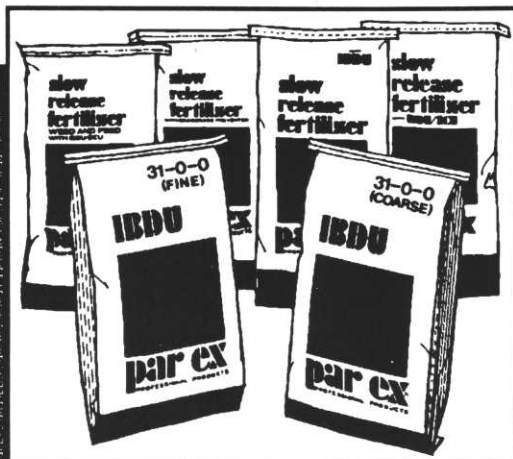
DowElanco
GALLERY

TURF Management
0-0-39 PRODUCTS, INC.

SUSTANE

1-800-551-4857

par ex
The Ex Stands For Excellence



Why the Ex
stands for
Excellence...
in professional turf care.

- Contains environmentally-oriented, non-leaching IBDU® slow-release nitrogen.
- Regionally formulated blends to meet your agronomic needs.
- Not dependent on soil temperature or microbial activity.
- 100% available nitrogen in a single growing season.
- Non-hygroscopic; flowable product.
- Non-burning; low salt index.

Ed Long
Specialty Products
Territory Manager
913/897-5604

Precision Turf
& Chemicals
Plymouth, MN
612/559-5293

Turf Supply
Company
Eagan, MN
612/454-3106

Lake City Golf Course Looks Normal Now

April 28, 1991. That's a day Cliff Reynolds would just as soon forget.

Cliff Reynolds is the grounds superintendent at the Lake City Country Club. April 28, 1991 was the day a local elevator came in to apply what was supposed to be slow-release nitrogen fertilizer.

Only problem was, it wasn't.

It was atrazine. You know, the stuff you've heard about on those farming commercials on TV. . . the stuff that kills grasses.

"It took about five to seven days before we noticed anything," said Reynolds. "At first it was just a little tip of brown on the grass.

"We knew that wasn't right, so we upped the water. But the brown just kept getting larger and larger."

The end result was a disaster. The club eventually had to remove 8 inches of dirt from each of the infected fairways and replace it with new dirt.

The course was closed from the first week in June through the end of August, while Reynolds attempted to bring things back to life.

Boy, did he.

Play a round at the Lake City Country Club today and you'd never know anything was ever amiss. Reynolds has the fairways back to their original, well-manicured condition.

But not without some major doses of hard work.

"The hours were incredible," said Reynolds of the work last summer. "If we got home with less than 55 hours a week, it seemed like we had a day off."

Helping to speed the recovery of the turf was the club's purchase of an \$18,000 Verti-Drain European Deep-tyne aerator.

"The new soil wasn't as porous as the old soil, plus it got compacted by the heavy vehicles we had in here," said Reynolds.

That's where the Verti-Draener comes in. The machine, which rumbles along at a quarter-mile-an-hour clip, punches holes 10-12 inches down into the soil.

Every fairway got the once over, with trouble spots getting an extra time or two.

The resulting turnaround has been nothing short of miraculous. "We're tickled to death," said Reynolds.

(Reprinted with permission from the Rochester Post-Bulletin)

Managing for Moisture Stress—

(Continued from Page 9)

fescue ► hard fescue ► red fescue ► Kentucky bluegrass ► perennial ryegrass. In going from perennial ryegrass to tall fescue, the reduction in water use is typically in the range of 20 to 30%. The exact amount depends on the varieties that are compared.

Varietal drought tolerance studies have been most extensive for Kentucky bluegrass. Among the older varieties, Adelphi, Touchdown, Newport and Baron reportedly have lower evapotranspiration rates than do Merion, Sydsport, Birka, Majestic and Nugget. Recently reported Illinois ratings for drought tolerance indicate that Unique, Opal and SR 2000 have high drought tolerance, while Miracle, Kenblue, Nublue and Liberty have low tolerance.

—*The Grass Roots*

Now
Apron
Treated ★



THE CROWNING TOUCH

To
Protect
Your
Investment

CROWN SERIES: Formulation blended for the Upper Midwest.
Choose the following Crown Series of turf formulations that meets your needs.

Coach's Formula For Athletic Fields

- ★ "Wear tested" elite Kentucky Bluegrasses and Turf Perennial Ryegrasses.
- Developed with the turf superintendent's requirements in mind.
- Recommended for athletic complexes, playfields, stadiums, high traffic areas around golf course fairways, tees, shopping centers, picnic areas, and parks.

Elite Landscape Formula

- ★ Meeting today's demands for a low maintenance quality turf with a balanced combination of Kentucky Bluegrass, fine Fescue, and Perennial Ryegrass.
- For new lawns and damaged turf around homes, parks, playgrounds, cemeteries, commercial and government buildings.

Shade Premium Formula

- Shade tolerant balanced combination of fine Fescues and Kentucky Bluegrasses that tolerate shade and are able to tolerate shade diseases and maintain an attractive turf.
- Ten percent Ryegrass provides quick cover.

Sod Growers Premium Formula

- ★ Top Quality Kentucky Bluegrasses combined to produce a premium sod.
- At harvest, the turf is attractive, dense, and yet tough, producing a liftable sod.
- ★ Quartet, blend of four perennial ryegrasses for high wear and quick establishment.

Turf Renewal Formula

- ★ Designed to redevelop vigor and beauty of old turf by introducing modern day grasses. This formulation produces fast erosion-resistant cover and helps with "on-time" fulfillment of contracts.

Turf Pride Formula

- Developed to produce a "turf proud" lawn which will maintain its premium quality for many years with moderate care.
- Recommended for home lawns, condominiums, important commercial and government buildings that require high quality turf with moderate to full management programs.

Crown Series Turfgrass formulas are distributed in the Upper Midwest by Brayton Wilbur-Ellis.

ADVANTA

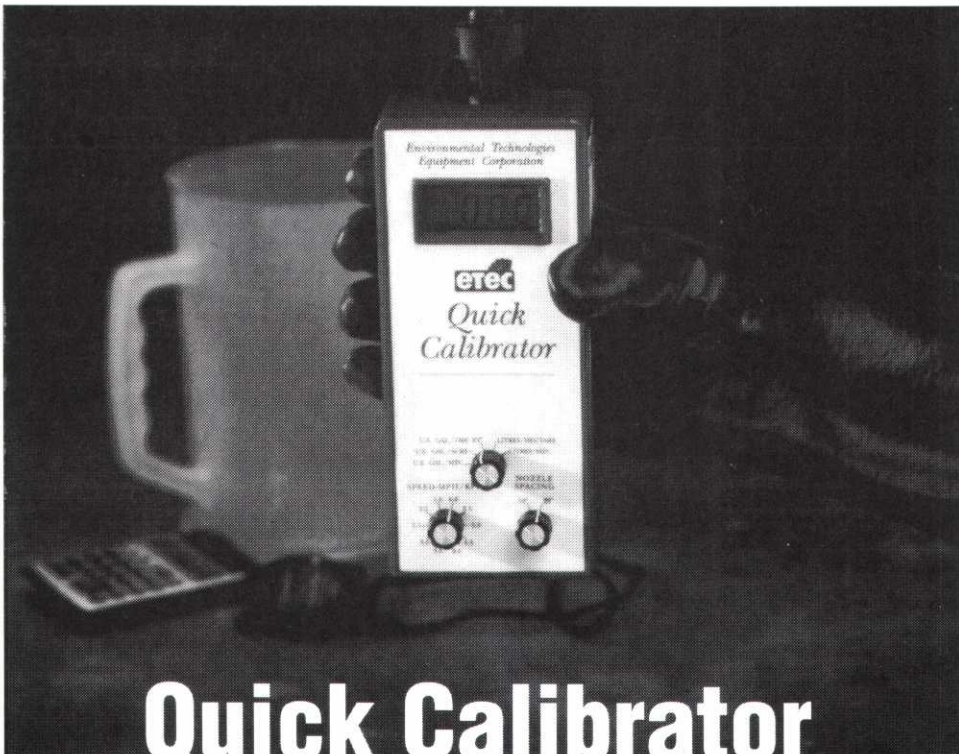


- Plant Protectants
- Plant Foods
- Top Quality Grass Seed
- Herbicides

FOR MORE INFORMATION CONTACT
LARRY THORNTON
800/642-2736 or 612/723-0151

1992 MGCSA Meeting Sites and Events

Date	Location	Event
September 14	Wayzata Country Club & Rolling Green Country Club	Stodola Scramble Research Fund
October 12	Island View Country Club	Golf & Lunch
November 18, 19, 20	Northland Inn	Annual Turf Conference



Quick Calibrator

Quick, easy, accurate calibration.

Are you still calibrating your sprayer the old, difficult way with containers, stop watch and calculator?

The patented QUICK CALIBRATOR is all you need to quickly, easily and accurately calibrate your nozzles.

Select the nozzle spacing and sprayer speed, then place the QUICK CALIBRATOR under the nozzle. The QUICK CALIBRATOR's computer automatically calculates the application rate and displays it in

large, easy-to-read numbers. The QUICK CALIBRATOR even turns itself on and off automatically!

No containers - No stop watch - No calculator.

QUICK, EASY, ACCURATE.

Check your nozzle calibration quicker than you can say "Environmentally responsible chemical application."

To order or for more information, call today -



Environmental Technologies Equipment Corporation

PRECISION TURF AND CHEMICAL, INC.

(612) 559-5293

FOR SALE

1985 Ransome 180 with 5 bladed reels. Short block in 1990.
Asking \$2,800.00

1970 Parkmaster
5 unit with 6 bladed reels. Driver Cage. Operates on Propane Good Condition. **Asking \$4,000.**

Contact: Tom Fuller
Parkview Golf Club

(612) 452-5098



Specializing in
**Re-Design & Construction
of Golf Courses**

*Consultants
Project Management*

Contact:
Gerald "Gary" Rohling

817 Gates Avenue
Elk River, MN 55330

(612) 441-5127
Fax (612) 441-3851

Mankato Wins 4th Annual John Deere Tournament

New Richmond, Wis. was the site of the 4th annual John Deere Team championship on July 27. On what turned out to be the most beautiful day of the summer so far, Tom Johnson and his crew did an outstanding job of preparing their excellent golf course for a truly outstanding day of golf.

The goal of each of the participants is to make it to the John Deere finals held in Palm Springs, Calif. this fall. Only the winning team at each regional tournament qualifies for the finals, which has become well-recognized as an outstanding event.

With the wonderful conditions, the scores were outstanding and the event went right down the wire, but in the end, Mankato won the scramble event with a score of 49.



THE WINNING TEAM FROM MANKATO: Boots Fuller, Michael Zinni, Ron Doty and Lee Mamer.

Results:

First Place:	Mankato Golf Club (\$1200)	49
Second Place:	Hastings Country Club (\$600)	53
	Goodrich Golf Club (\$600)	53
4th Place:	New Richmond Golf Club (\$440)	54
5th Place:	Clifton Hollow Golf Club (\$180)	56
	Dahlgreen Golf Club (\$180)	56
	Keller Golf Course (\$180)	56
	Bunker Hills Golf Course (\$180)	56
	Izaty's Golf and Yacht Club (\$180)	56
	River Falls Country Club (\$180)	56

Skill Awards

(pro)

Closest to the Pin Steve Whillock

Longest Drive John Anderson

(amateur)

Closest to the Pin Mark Albrecht and Lance Paulson

Longest Drive Eric Opsal and John Katterheinrich

We at Polfus Implement would like to thank all the participants who made the John Deere tournament a success. Good luck to the Mankato team in Palm Springs!

Golf Course Accessories

- Ballwashers • Detergent • Mounting Pipes & Bases • Tee Signs • Spike Brushes • Hole Cutters • Flag Poles • Flags • Cups • Rakes • Benches • Tee Markers • Practice Greens Markers • Whipping Poles • Course Signage • And More.

Requested by players. Preferred by course professionals. Specified by designers and used with pride wherever golf is played.

Call your Par Aide dealer today for our **FREE CATALOG**, or call us at 612/779-9851 for the name of the dealer nearest you.

© 1990; Par Aide Products Co., St. Paul, MN.

WILLIAMS & GILL

GOLF COURSE ARCHITECTURE
 LANDSCAPE ARCHITECTURE
 LAND DEVELOPMENT PLANNING

•

GARRETT GILL

•

421 North Main Street
 River Falls, WI 54022

•

(715) 425-9511

SDA

Site
Design
and Associates

**IA CERTIFIED
GOLF COURSE
IRRIGATION CONSULTANTS**

INDEPENDENT DESIGN
BIDDING DOCUMENTS
INSTALLATION OBSERVATIONS
'AS-BUILT' PLANS
PUMPING STATIONS

**700 Main Ave
Fargo, ND 58103
(701) 282-8440**

MEMBERSHIP REPORT

AUGUST 17, 1992
MIDLAND HILLS COUNTRY CLUB

NEW MEMBERS—AUGUST 17, 1992

Fred Baker	Golden Valley Country Club	Class	C
John Cox	Midland Hills Country Club		D
Jeff Jensen	Brightwood Hills Golf Club		BII
Mary Patricia Knaggs	Hazeltine National Golf Club		A
Craig Larsen	Lafayette Country Club		D
Richard Meyer	Golden Valley Country Club		C
Christopher Ostrom	Hazeltine National Golf Club		D
Barry Provo	Lone Pine Golf		A
Marc Sundeen	Golden Valley Country Club		C
Jerry Webb	Wedgewood Valley Golf Club		A
Kelly Wosika	Midland Hills Country Club		D
Daniel O'Brien	Club Car Inc.		F
Dick Williams	Hydro Green Inc.		F
Mike Reynolds	M&R Enterprises Inc.		F

RECLASSIFICATIONS—AUGUST 17, 1992

Jon Heimsness	Swanston Equipment Corporation	D to F
Mike Pierce	Coffee Mill Golf & C.C.	BII to B
Lynn Richert	Angushire Golf Course	B to A

Mike Olson, Membership Chairman

TURF SUPPLY COMPANY

2797 Eagandale Blvd

Eagan, MN 55121

The Most Complete Source of Turf Management
Products for your Course

The Programs for "92" are Here

Early Pay Early Order Early Take Late Pay ??Confused??

*Please Call your Turf Supply Representative
or
the office at (612) 454-3106*

We will take the confusion out of it for you

**Good Fertilizer Doesn't Cost It PAYS!!!
(612) 454-3106**

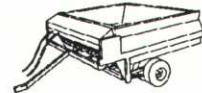
LEITNER



Your Swiss Army Knife for sand and soil!

- * Top Dressing Sand
- * Soil Mixes
- * Cart Path Rock
- * Limestone
- * Trap Rock
- * Bunker Sand
- * Shredded Mulch
- * Wood Chips
- * Retaining Wall Systems
- * Pavers

- * New! The Mete-R-Matic Large Area Top Dresser is available for fairways and athletic fields.



MIKE LEITNER

LEITNER COMPANY

where service is our salesman

945 RANDOLPH AVENUE
ST. PAUL, MINNESOTA 55102

(612) 291-2655

PROUD SUPPORTER OF RESEARCH AND EDUCATION THROUGH THE MGCSA

EDITOR'S CORNER

By Dale Wysocki
Faribault Golf & Country Club



Recently a very large finger has been pointed in the direction of golf courses, claiming that Golf Course Managers have been attempting to do ill will to the surrounding facilities that we manage, by applying numerous types of plant protectants with little or no regard for the environment.

Well, that is just not so! Like all Golf Course Managers, I am an environmentalist. Just look at all the benefits we gain by having healthy turf, oxygen production, dust reduction and glare reduction. During heavy rains healthy turf slows down the runoff. Think of the aesthetics that a healthy green turf provides, plus the habitat that, along with trees, shrubs and flowers, is provided for nature.

I am aware that many misconceptions abound about plant protectants. Our membership must take the necessary steps to educate the golfers at their facilities by forming Environmental Committees to advance the knowledge of the golfing members. Then we can work together and spread the word about how plant protectants are developed and what type of testing is required by the EPA before the plant protectants make it into our very capable hands.

In addition, how many golfers are aware of what kind of research is taking place regarding breeding more disease- and drought-resistant turfgrasses? Just think of the potential that we, as Golf Course Managers, have to educate the people who use our facilities.

Sometimes it is so easy to blame someone because people don't know the entire story or it's just an easy target. If more people were able to investigate an item thoroughly before making statements or drawing conclusions before all the evidence is gathered, life could be a little less hectic.

Final thought: just how much oxygen does an asphalt parking lot produce?

* * * *

Golf in Minnesota is just getting better all the time.

Are you aware of all the USGA events coming up? Starting in 1993 there's the Walker Cup being played at Interlachen Country Club. The PGA Senior Tour is going to make a stop at Bunker Hills Golf Club in Coon Rapids, and, in the near future, the USGA will also be making stops at Hazeltine National Golf Club, Wayzata Country Club and Rochester Golf and Country Club. This most certainly is a testament to the conditions of the golf courses and a testament to the dedication of the Golf Course Managers who care for these fine facilities.

* * * *

Have you ever witnessed an accident on your golf course? If so, what did you do? At many golf facilities there is an Emergency Response Plan in effect to deal with anything from pesticide spills to coronary arrests. Since the Grounds

Crew is the most visible part of a golf course operation, in the event of an emergency on the golf course, golfers are most likely to contact grounds crew personnel to report an accident. Make sure when forming an ERP that all parties within the club are correctly in place, so that when an accident or emergency occurs, you and your staff has everything in place.

* * * *

With the Harold Stodola Scramble coming up on September 14th at Wayzata Country Club and Rolling Green Country Club, remember that the dinner is held at Wayzata Country Club and a sportcoat and tie is considered appropriate dress.

* * * *

Congratulations to Monty and Renee Montague. New daughter Sonya Marie was born on August 2nd.

* * * *

What's it like on the Board of Directors for the MGCSA? I enjoy assisting in running the organization like my other 11 brothers. Being on the Board is an honor, and it does take work. Nothing can be accomplished unless work is involved; we know that from just the way we make our golf courses appear. With the annual meeting not very far off, take some time to think what could make our organization better, and if you are interested in running for the Board, contact Tom Fischer.

* * * *

The MGCSA wishes to express its deepest sympathy to the George D. Ostler family. Lorraine Ostler, spouse of George D. Ostler passed away recently. George D. Ostler was President of the MGCSA in 1979.

* * * *

Congratulations to Kevin and Nancy Clunis on the July 30th birth of their newest daughter, Kira.

* * * *

Reality struck me like a ton of bricks on Friday, August 21st. Our families lost a good friend. I had found out about Roger's illness down in New Orleans. There wasn't much I could do. Roger underwent all the standard treatment for this illness and a glimmer of hope prevailed. We played golf a couple of times in years past. Nothing serious, just fun. We never kept score. On Friday, we received a phone call that Roger was very, very ill. We planned to see him later that evening. At four o'clock the phone rang again. No trip to Elk River tonight, the pain and suffering was over. Wasn't much I could do. Roger is gone now, but I will remember him. I will remember. Time to pick up and go forward there is still a lot to accomplish, the horizon is bold and new, and there will be more challenges to come.

— Dale Wysocki
Editor

