



*"It's Important To Do It Right  
The First Time"*

**Specializing in  
Re-Design & Construction  
of Golf Courses**

**Contact:**

**Gerald "Gary" Rohling**

817 Gates Avenue  
Elk River, MN 55330

(612) 441-5127  
Fax (612) 441-3851

## GCSAA Recommended Bylaw Changes

If proposed changes to the bylaws of the Golf Course Superintendents Association of America (GCSAA) are enacted at the 1993 annual meeting in Anaheim, Calif., a new system of individual voting would replace delegate and proxy voting at GCSAA elections.

Under current GCSAA bylaws, any registered individuals can vote in GCSAA elections, or they can give their vote to a chapter delegate, or they can vote by proxy.

If the change is enacted, voting for candidates for office and on other business matters would take place either by mail-in balloting prior to the annual meeting, or by on-site voting during the association's annual conference and show. Each eligible GCSAA member would choose his voting method.

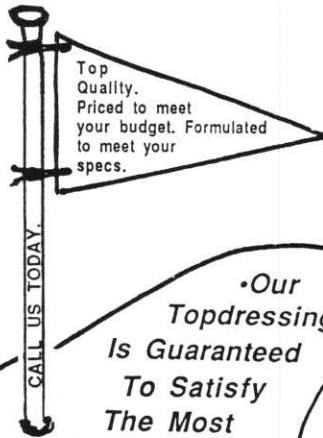
Other proposed bylaws changes would:

- authorize the board of directors to set annual dues, currently set by the membership, for all membership classes;
- authorize the board to change membership classification requirements, presently codified in the bylaws;
- allow amendments to the association's stated purpose and definition all golf course superintendent;
- add membership classes (including non-superintendents);
- change nominating committee procedures;
- change the vote required to amend bylaws from two-thirds to a simple majority.

GCSAA President William R. Roberts, CGCS, presented the proposed bylaws changes, recommended by the Organizational Study Committee, to voting delegates at the association's recent conference and show in New Orleans.

Roberts stressed that the association is a "business in a competitive business environment. It is our aim to establish organizational parameters that allow for a maximum degree of competitiveness in a dynamic business environment." Noting that the bylaws had stood since the founding of the association, "one must ask whether a set of operational parameters that were initiated in 1926 haven't become (instead) operational limitations that restrict our ability to realize our full potential impact on the industry."

## TOPDRESSING



*•Our  
Topdressing  
Is Guaranteed  
To Satisfy  
The Most  
Fastidious Superintendent.*

**BULK PEAT  
AVAILABLE**

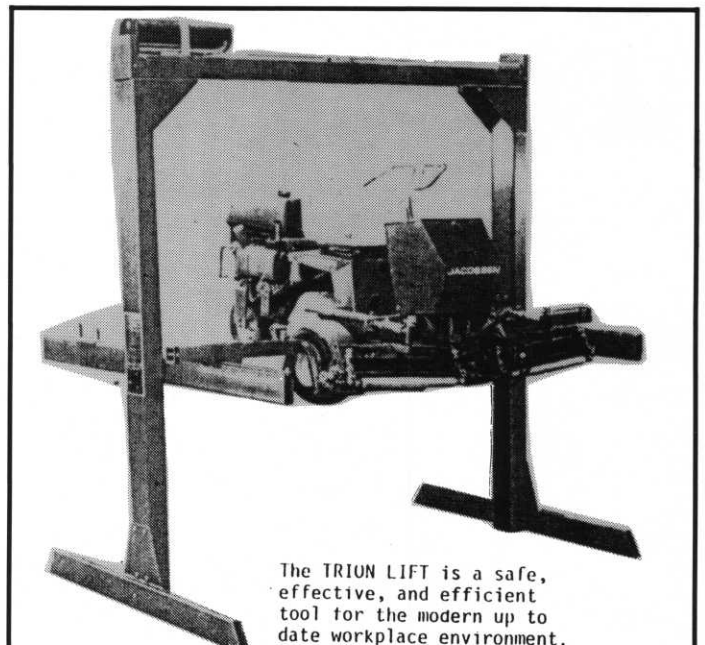


NORTHWOOD, IA 50459

(515)  
324-1063

Offices in Northwood, IA, and Lake Mills, IA

**RANDALL  
TRANSIT MIX  
CO.**



The TRION LIFT is a safe, effective, and efficient tool for the modern up to date workplace environment.



Designed specifically,  
with the mechanic in mind.

**TRION™ LIFTS, INC.**  
P.O. Box 697 Greeley, CO 80632

Joseph M. Check (Joe)  
Independent Representative  
Minnesota  
4420 ChurchIII, Shoreview, MN 55126

612-483-5962  
800-426-3634

## 1992 MGCSA Meeting Locations, Events, Sponsors

DATE	LOCATION	EVENT	SPONSORS
May 11	Braemar GC	Golf & Lunch	Cushman Motor Co. E.S. Dygert Co.
June 8	Faribault CC	Golf & Lunch	North Star Turf Turf Supply Co.
July 13	Tartan Park	Garske Scramble	MTI Distributing Par Aide
August 17	Midland Hills	MGCSA Champ.	Long Lake Tractor RW Golf Cars
September 14	Wayzata CC Rolling Green	Stodola Scramble	None
October 12	Island View Golf	Golf & Lunch	Polfus Implement



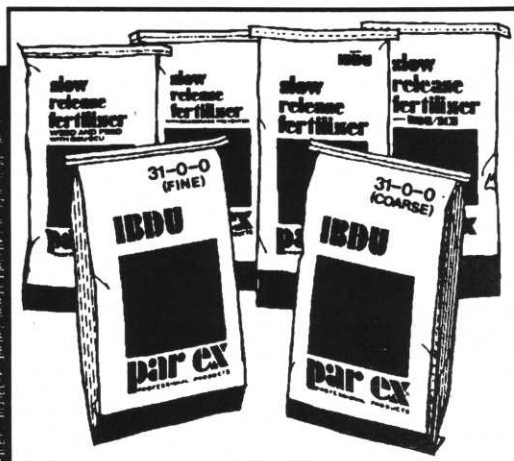
### WILLIAMS & GILL

GOLF COURSE ARCHITECTURE  
LANDSCAPE ARCHITECTURE  
LAND DEVELOPMENT PLANNING

•  
**GARRETT GILL**  
•

421 North Main Street  
River Falls, WI 54022

•  
(715) 425-9511



## Why the Ex stands for Excellence... in professional turf care.

- Contains environmentally-oriented, non-leaching IBDU® slow-release nitrogen.
- Regionally formulated blends to meet your agronomic needs.
- Not dependent on soil temperature or microbial activity.
- 100% available nitrogen in a single growing season.
- Non-hygroscopic; flowable product.
- Non-burning; low salt index.

**Ed Long**  
Specialty Products  
Territory Manager  
913/897-5604

**Precision Turf  
& Chemicals**  
Plymouth, MN  
612/559-5293

**Turf Supply  
Company**  
Eagan, MN  
612/454-3106

# NEW GOLF COURSE CONSTRUCTION EVALUATION

By Paul Mayes  
The Links at Northfork

Recently I was involved with construction of a new golf course — The Links at Northfork. It has always been one of my goals to build a golf course from the beginning to end. I had enough experience with reconstruction and upgrading of older courses and I felt it was time to build a course correctly from scratch.

Since this was my first involvement with totally new construction, there are some areas I would do differently and some areas I would do exactly the same, if I ever do such a project again.

I was involved with this project since its conception approximately five years ago. My role was to be the liaison between the management company, contractor and golf course architect. I was given the opportunity to set standards for construction quality and management style. My daily tasks were recommending field adjustments for agronomic stability and easier maintenance. I also assisted the construction foremen in all phases of the project.

**One of the most important items** I would do differently is being more involved in the initial specifications for construction of the golf course. This would eliminate any grey areas which the contractor is responsible for. It would also enable the contractor to research materials needed well in advance of the project.

The next most important area I would do differently is creating better surface drainage in large flat areas. This would be solved in one of two ways: either by raising the percentage

of surface slope from one percent to at least two percent, or, creating drainage swales in these areas to move the water to non-play areas for infiltration into the soil. We are presently solving the problems with French drains and tile lines.

In conjunction with drainage, I would also tile ALL bunkers and use surface drains in grass depressions. Because of our high sand soil profile, we did very little subsurface drainage in these areas. For the most part these areas drain very well. But under extreme heavy rain conditions, I would like to see more expedient subsurface removal of water in these areas.

Another aspect of the project which I would do differently is sodding of green complexes. We sodded one strip around our greens, tees and bunkers. We also did some severe slopes. Because of the multiple mounding and depressions, I feel the majority of the green complex should be sodded. This would eliminate most washout repairs and continued reseeding.

**Our pond banks are also an area I would change** their construction. We sodded around most of our ponds, but because of the amount of surface drainage to the ponds, washouts were a big problem. The most severe washout areas were ripped. I feel that all pond banks should be ripped or stabilized with some type of permanent material.

I would also complete the construction of the maintenance building much earlier in the project. We did not have adequate

*(Continued on Page 24)*

## To most, Summer Patch is an unseen mystery. Here's how to keep it that way.

Banner® turf fungicide works systemically to prevent the spread of diseases, like Summer Patch, before damage occurs. Call for a free copy of our turf disease guidebook to learn even more. **Banner**



IDEAS TO GROW WITH®

FOR MORE INFORMATION, CONTACT  
**LARRY THORNTON**  
1-800-642-2736 or 612/723-0151

# Northfork Construction—

(Continued from Page 23)

storage facilities for equipment in later stages of construction. It was difficult to run the total operation out of a trailer. Meetings and crew organization were difficult to manage without proper facilities.

Last, but not least, staffing is another area I would change. Other than bringing some labor type people on board during construction, I supervised the total seeding, fertilizing and grow in of the golf course myself, as well as working with the construction foremen in completion of the project. I would definitely hire an assistant to oversee maintenance of the grow in of the golf course. And if possible, a foreman to assist that person.

There are some areas of the project I would do exactly the same. We had very good success in certain aspects of construction techniques which I wish to share with you.

**Green construction is one of the most important** parts of the golf course. We followed U.S.G.A. recommendations in our green construction except for one item. We did not use a barrier between the green's material and the surrounding soil profile. The reason for no barrier was because the surrounding soil profile was similar to the root zone mix. We felt the interface of the two profiles would not create a problem such as localized dry spots or added disease pressure. If the surrounding profile was of heavier soils, we would have used a barrier.

Tee construction is another area I would do the same. Because tees are almost as important as greens, we used the same root zone mix as on greens for the top six inches on tees. Also, our subgrade soil profile consisted of high sand material.

Method of seeding is also a procedure I would do similarly. The soil surface must be well pulverized for good soil to seed

contact. We used billion seeders on the fairways and rough. Fairways were seeded with Penncross bentgrass at 65 lbs. per acre. The greens and tees were seeded with Pennlinks and Penncross bentgrass respectfully at 1½ lbs. per 1000 sq. ft. with a drop spreader. I used Milorganite as a carrier for the bentgrass seed. When seeding greens and tees, we first raked the surface, seeded in two directions, reraked, then drove over the surface with the wheels of a mechanical bunker rake unit to get soil to seed contact.

### **Timing of seeding is as important as the seed itself.**

The perfect window for seeding I believe is from June 15th to August 15th. Soil temperatures are at their maximum for fast germination. We had bentgrass germinating in three days (this was not pregerminated seed).

Fertilizing procedures are also an area I would do the same. We applied 10 lbs. per 1000 sq. ft. of 20-10-20 to all areas just before initial seeding. The material used was 50 percent sulfur-coated. Three weeks later, we applied 2½ lbs. per 1000 sq. ft. per week of 20-6-20 quick release material until the end of the growing season. All fertilizers used were an Ag grade material. There was some modeling of the surface color, but we were not concerned with that during the grow in period. We will continue with a high fertility program during the 1992 season.

I hope some of my evaluations will assist you if you are considering construction or reconstruction of an area on your golf course. Maybe not every procedure we used will work for you in your situation, but if it does help you to make a decision on your project, I feel you will be pleased with the results. Golf course construction is an exciting challenge which is very rewarding when you see the outcome. I feel you never stop improving your golf course, no matter how perfect it is from the beginning.



DISTRIBUTORS OF:

**RAIN BIRD**

**Hunter**

**CRELINE**

AND OTHER QUALITY TURF IRRIGATION PRODUCTS.

- CONTROLLERS
- HEADS
- VALVES



- PIPE/FITTINGS
- PUMPS/METERS
- WIRE/VALVE BOXES

#### **LOCATIONS:**

15400 28th Avenue North  
Suite 2  
Plymouth, MN 55447  
(612) 559-0057

415 Sundial Drive  
St. Cloud, MN 56387  
(612) 259-6448

1971 Seneca Road  
Bay "H"  
Eagan, MN 55122  
(612) 687-0282



# If These Nationals Climbed Hills any Better They'd Have Four Legs, Two Horns & Live in the Rockies!



See for yourself why there's nothing as nimble on any turf as a National Triplex. Call today for a FREE video.

(612) 646-4079

AN AUTHORIZED NATIONAL MOWER CO. DEALER

**CUSHMAN MOTOR CO., INC.**

2909 EAST FRANKLIN AVENUE, MINNEAPOLIS, MINNESOTA 55406 (612) 333-3487





# NETWORK<sup>®</sup> 8000



The new central /  
satellite control system  
that saves you energy,  
water, labor...money!

*The  
Spirit  
of Competition*

FOR MORE INFORMATION, PLEASE CALL

MAIN OFFICE:

**MTI** DISTRIBUTING CO. **TORO**

**PLYMOUTH**

14900 21ST AVE NO  
PLYMOUTH, MN 55447  
612-475-2200  
1-800-362-3665

**FRIDLEY**

8041 RANCHERS ROAD  
FRIDLEY, MN 55432  
612-785-2430

**BURNSVILLE**

1103 RIVERWOOD DRIVE  
BURNSVILLE, MN 55337  
612-890-3720

**FARGO**

4310 MAIN AVE  
FARGO, ND 58104  
701-281-0775  
1-800-782-1031

# The Winter of 1991-92

\* \* \*

## The Final Word . . . Hopefully

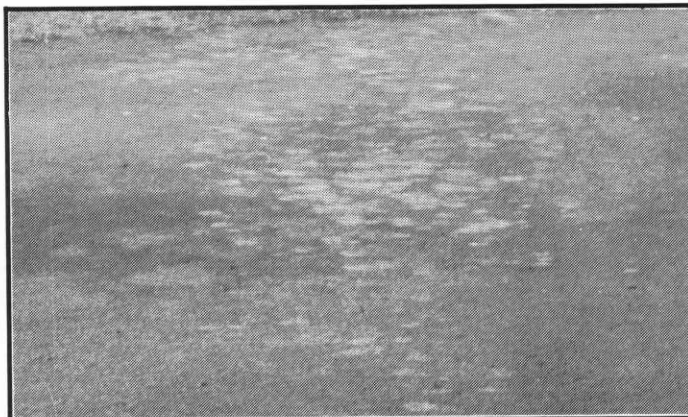
Spring has arrived, the turf is starting to grow and we are seeing some unsettling sights. Reports are coming in from all over the state, of tan turf, where there should be green. What caused the tan patches? I'll leave the official explanation up to the experts; on my golf course I have seen where the ice just sat a little too long, some crown hydration, maybe even some low temperature kill. Superintendents throughout the state are starting to put to use their collective talents and skills to bring back to life putting surfaces that are scarred, fairways that are barren and tees that have no turf to be seen anywhere.



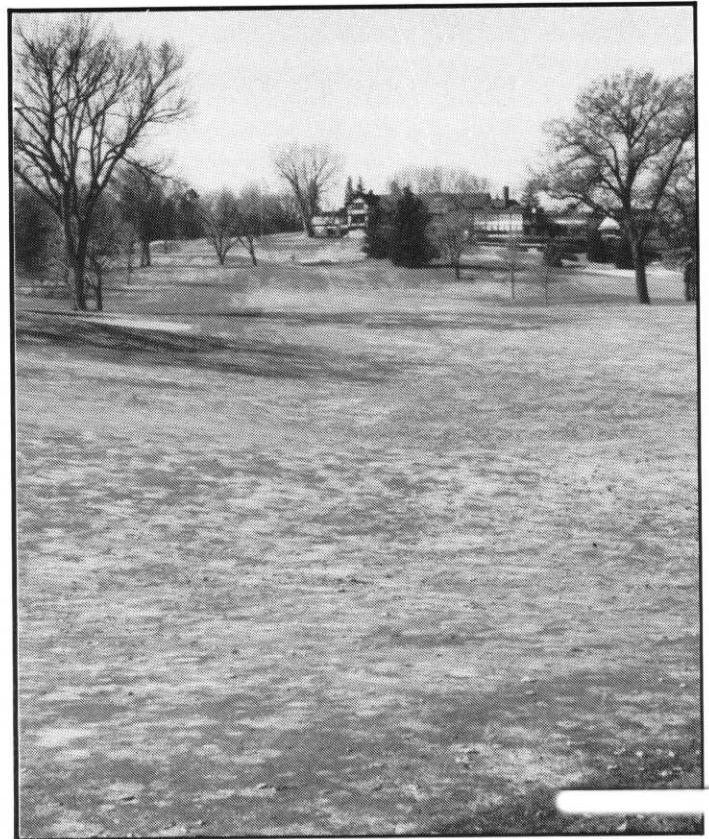
Nothing was applied at the sod nursery at Braemar G.C.



FARIBAULT GOLF & COUNTRY CLUB  
Freezing rain caused damage to Amur Maple Trees.



BRAEMAR GOLF COURSE  
Plant protectants applied to the right and left of this slice.



INTERLACHEN COUNTRY CLUB  
Due to snow cover plant protectants could not be applied.

## Introducing The Perfect Bag For Greens And Tees.



For overseeding low cut areas and establishing greens and tees, no other fertilizer provides the kind of coverage and nutrient distribution that Country Club 10-18-18 does.

Country Club  
10-18-18 

**Paul Olson**  
Territory Account Manager  
Roseville, MN (612) 483-4782





## HAS THE BEST OF BOTH WORLDS!!!

We are a custom contractor selling aeration services using the

### VERTI-DRAIN®

- Deep Aerification with semi-conventional tines
- Maximum depth of 12"
- Allows you to change the soil profile of your greens

— OR —

### TORO HYDROJECT®

- Quality Aerification using ultra high pressure water
- Allows you to aerate any time of the growing season

The two

## Leading Aerifying Tools

being used by the

## Leading Aerifying Company

WHEN YOU NEED DEEP AERIFICATION  
THINK FIVE STAR!

**1-800-873-1455**

Keith Faber

## Spray Tanks— (Continued on Page 13)

and have a tendency to slow down the metabolism of desirable grasses.

### Alternative Spray Programs

The accompanying chart of alternative spray programs, entitled "Some Fungicide Combinations," illustrates the diversity of chemicals used. An excellent article written by Dr. Patricia Sanders of Penn State, explains very clearly the proper use of various systemic fungicides. . .

"The broad spectrum systemic fungicides that control other turf diseases fall into three groups according to their mode of action; the benzimidazoles (Tersan 1991, 26019, Vorlan), and the sterol inhibitors (Banner, Bayleton, Rubigan). Any fungus that is resistant to one of the benzimidazole fungicides will be resistant to them all. The same is true within the dicarboximide and sterol inhibitor groups of fungicides. Therefore, for resistance management, broad-spectrum systemic fungicides must be mixed or alternated BETWEEN but not WITHIN groups. Systemic fungicides may also be mixed or alternated with any contact fungicide that will give the disease control desired."

#### Solubility and formulation

Solubles: EC, S, SP	Insolubles: WP, F	Soluble-Insoluble combinations (Treat as solubles)
<b>FUNGICIDES</b>		
PMAS Caddy Subdue BANOL ALLETTE BANNER RUBIGAN EC	Tersan 75 Tersan LSR Tersan SP Spotrete Bromosan Spectrol 3336 1991 RUBIGAN WP SCOTTS FUNGICIDES I, II, III	Bayleton Fore Maneb Zineb Captain Daconil 2787 Dyrene Fungo RP26019
<b>INSECTICIDES</b>		
Dursban Diazinon Chlordane Sevin	Malathion Proxol Dylox Triumph	Oftanol Diazinon Dursban Sevin Malathion
<b>HERBICIDES</b>		
2,4-D MCP Dicamba ACCLAIM	MCPA DSMA MSMA AMA Betasan-EC	Dacthal Tupersan Balan SURFLAN
<b>FERTILIZERS</b>		
urea ammonium nitrate ammonium phosphate ammonium sulfate potassium nitrate muriate of potash Formolene Cleary's Water Soluble N-P-K's	Nitroform (Powder Blue) IBDU Fluf (flowable ureaform)	

#### Some fungicide combinations

Soluble contact	Insoluble contact	Insoluble systemic
1 oz. Caddy	+ 3 oz. Spotrete-F	+ 1 oz. 3336-F
or 1 oz. Caddy	+ 3 oz. Daconil	+ 1 oz. RP26019
or 1 oz. Caddy	+ 2 oz. Dyrene	+ 1 oz. Bayleton
or ½ oz. Caddy	+ 1 oz. Tersan SP 2 oz. Daconil	+ ½ oz. 1991 ½ oz. Bayleton
or ½ oz. Caddy	+ 1.5 oz. Daconil 1.5 oz. Spotrete	+ ½ oz. Bayleton ½ oz. 3336-F

Suggested fertilizer combinations added with fungicides:

1 oz. urea + ½ oz. chelated iron + ½ oz. chelated magnesium + 1 oz. potassium sulfate

6 oz. Cleary's (N-P-K) + 4 oz. Trugreen (Mg + Iron + Potash)

8 oz. Fluf (ureaform) + 1 oz. potassium sulfate + 1 oz. chelated iron + 1 oz. epsom salts (magnesium)

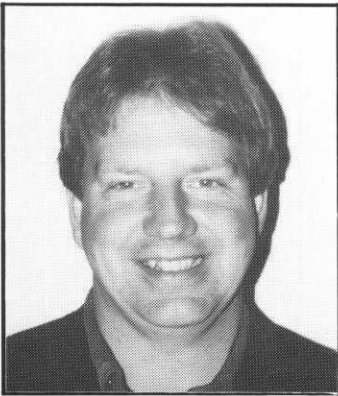
## EQUIPMENT FOR SALE

1989 John Deere AMT 600 rebuilt engine . \$1,600 or best offer.  
1991 Proline 52 with oil filter kit used 25 hrs. . . . . \$2,300

Call Marty at 463-2269 (leave a message)



## What Is Your Favorite Part About Spring?



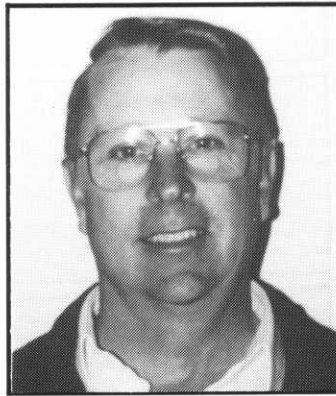
**PAUL MAYES**  
The Links at Northfork

"My favorite part of Spring is getting out of my office and onto the golf course. I love watching the turf coming out of dormancy and the buds appearing on the trees. Spring-time also gives me a chance to see our wildlife come out of their protector from winter and move around the golf course."



**DICK KOLTER**  
Westfield Golf Club

"The one thing that I like the most about Spring is the additional daylight the season brings. On the golf course, I am always happy to see that all the grass has come through the winter undamaged and the irrigation system does not have any leaks."



**JOHN QUEENSLAND**  
Cedar River Country Club

"I like putting out freshly painted benches and ballwashers etc. First cutting of grass also smells so good... seeing members coming back to golf after a long winter... starting up new equipment... turning water systems on... seeing greens coming out of snow."



**BUTCH GREENINGER**  
MTI Distributing Co.

"The fact that it feels like a new beginning and everyone that I deal with is upbeat and looking forward to the coming season and its new challenges that are sure to surface for all of us in the industry."

### MEMBERSHIP REPORT

APRIL 13, 1992  
LAKE CITY GOLF CLUB

#### NEW MEMBERS—APRIL 13, 1992

Name	Club	Class
Todd Carlson	Northland Country Club	BII
Kyle Howieson	Cimarron Park & G.C.	B
John Ewens	Esquaguma C.C.	C
Scott Held	The Pines	C
Dick Lemmerhirt	Pumpco of Mn.	F
Peter Loyd	Golf Course Services	F
Damon Morgan	Edgewater G.C. & Restaurant	B
Joe Nelson	Enviro Mn. Inc.	F
Richard Randall	Hiawatha G.C.	A
Gerald Sunde	Sunde Engineering Inc.	F
Leroy Wurm	Albion Ridges G.C.	D
Chris Youngbauer	Pine River G.C.	BII
Todd Zemke	Burl Oaks G.C.	D

#### RECLASSIFICATIONS—APRIL 13, 1992

Name	Club	Class
David Burhop	Bracketts Crossing C.C.	BII to B
Tom Johanns	Bemidji Town & C.C.	BII to B
Greg Iden	Shoreland C.C.	B to A
Steve Spaulding	Elm Creek Golf Links	C to BII
David Wood	St. Cloud C.C.	D to BII
Jeffrey Youngbauer	Montevideo C.C.	C to BII
Darren Armstrong	Macalgrove C.C.	BII to B

*Mike Olson, Membership Chairman*

### SCHOLARSHIP APPLICATIONS

MUST BE RETURNED TO THE MGCSA  
OFFICE BY JULY 1, 1992

APPLICATIONS MAY BE OBTAINED BY  
CALLING THE BUSINESS OFFICE AT:

**(612) 473-0557**

# LESCO

Has it! Everything you need for  
professional turf management.

- Fertilizers •Control Products •Seed
- Irrigation •Equipment •Replacement Parts •Golf Course Accessories •Safety Products
- Service Brochures • Low Voltage Lighting

**(800) 321-5325**

**Your Growth Partner**

LESCO, Inc., 20005 Lake Rd., Rocky River, Ohio 44116



## EDITOR'S CORNER

By Dale Wysocki  
Faribault Golf & Country Club



Has anyone figured out what "Colochor" is? After reading the content of President Rick Fredericksen's April message, everyone will know that "Colochor" is "Calo-chlor" I apologize for the mistake. Anything that is written in Hole Notes is the responsibility of the Editor. I guess that it's a case of we're in a hurry to get things done, so let's hurry and get it done. This is a subject that I try to always remember and carry out, do the task correctly and use a reasonable amount of time doing it. Being in too much of a hurry may save time, but mistakes can happen.

\* \* \* \*

In a recent discussion with a close personal friend, we were trying to figure out how the MGCSA came about. We know that the MGCSA was established in 1927, and the MGCSA was organized to promote the art and science of maintaining fine turf for golf courses throughout the states of Minnesota, Wisconsin and the Dakota's. Aside from that there is no real history for us to acquaint ourselves with. Now I know that there are old photos out there and probably much more than just that. If a group of people, or if an individual would be interested in writing a column on the history of the MGCSA, I know that the column would be more than welcome.

**Another idea that is currently being pondered** is the question of how to generate more member-written articles. One train of thought is why not break *Hole Notes* into "theme" issues, this being that, the June issue will contain articles pertaining to Poa. The July issue is going to be geared towards disease, insect and other nemeses of turf-grass plants. August seems to be when our golf courses and ourselves are under the most stress, so that seems to be a timely issue. Ah, September, with the temperatures cooling down and the golfers are becoming scarce, a good time to do renovation projects. What more can you say about October, thinking of putting the golf course to bed for the year? Just remember October 31, 1991. Finally November arrives and winter maintenance of equipment, time to encourage mechanics to give out a couple of their secrets that keep the equipment working at peak performance all year long. Should you feel the writing bug approaching your desk or word processor, and now there is a subject already picked for you, to coin a popular advertisement, "Just do it."

\* \* \* \*

**Spring has arrived.** I remember last time we talked I was talking about our perennial friend, Mother Nature. She granted me several favors this past winter and I am grateful. With the advent of spring comes, sometimes, my favorite time of year. It's the start of a new golf season, the grass is coming out of its dormancy, a chance for us to put to work the knowledge we picked up attending various seminars throughout the off season. A chance to prove ourselves that we are worthy of what we are doing. Along these lines it's time to do an attitude check. Remember to keep a Positive Mental

Attitude. It will keep you going indefinitely. What's best about Spring? Everything!

\* \* \* \*

**Lesco is pleased to announce that George Jennrich** will be driving the "store on wheels" throughout Minnesota and western Wisconsin.

\* \* \* \*

**Paul and Beth Tinklenberg** would like to welcome Alissa Marie, born on March 3, 1992. Paul is the Golf Course Superintendent at Ortonville Municipal Golf Course.

\* \* \* \*

Have you ever wondered why there are erasers on the end of pencils that go with your golf scorecard? Why is it that the closer you get to the putting cup the smaller it gets? Why is it when putting uphill the greens are slower than a snail's pace but, when putting downhill, the greens are either too fast or just illegal?

\* \* \* \*

**I am looking for help on a project** for the November issue; it's called the top 10 questions asked to a superintendent. Please submit your top 10 questions to me at my home address.

\* \* \* \*

**Larry Thornton of Wilbur-Ellis** had arranged for Owen Town of Ciba-Geigy to talk to the group about how a plant protectant goes from the laboratory to the testing fields to us the end user. Afterwards, a brief question and answer period was conducted about registration of products, what's coming on the market and how products actually get discovered. The next outing is scheduled for May 11th at Braemar Golf Club.

\* \* \* \*

**Mark May 11th on your calendar.** The MGCSA monthly meeting will be at Braemar Golf Club. John Nylund has written us an article on the many different projects going on at Braemar. Look forward to attending.

\* \* \* \*

During the past year I have found a new way to relax, reading. Right now I am trying to read any chance I get. During the course of my ventures I have found quotes that can pertain to everyday life. One of my favorites is "a person needs new experiences, they jar something deep inside, allowing them to grow; without change something sleeps inside us and seldom awakens, the sleeper must awaken.

— Dale Wysocki  
Editor

## Heimsness is New Turf Sales Rep for Swanston Equipment Co.

Jon Heimsness, a former superintendent at Moorhead Country Club and Village Green, is the new turf sales representative for Swanston Equipment Co., Fargo, N.D.

Heimsness also was an assistant at Wayzata Country Club and a foreman at Golden Valley. He now lives with his wife, Joann, and three children in Moorhead.