

Here's What Happened In Lake City

* * * *

'In Two Weeks the Grass Changed From Dark Green To Light Green, Then Yellow . . . But 1991 Should Be Golf As Usual'—Cliff Reynolds, Superintendent

(Ed. Note: Following is an account of the "fertilizer foul-up" on April 27 at Lake City Country Club by Cliff Reynolds, Head Golf Course Superintendent.)

* * * *

By **CLIFF REYNOLDS**
Head Golf Course Superintendent
Lake City Country Club

On April 27th last spring rain was expected and it appeared to be a great time to fertilize fairways.

At 7:00 a.m. I called the Farmers Elevator Co. and arranged for a fertilizer truck to come to the course at 8:00. Everything looked good for an early start of the golfing and mowing season.

It took 45 minutes to fertilize eight fairways and the driving range. However, in the next two weeks, the grass changed from dark green to light green, then to yellow.

While the fairways were apparently dying, my Greens Chairman and myself had several meetings with the Farmers Elevator

manager. We agreed soil tests were needed. The results left us all in shock: Atrazine, Simazine, Dursban, Princep and even the sulfur coat Urea.

Although not accepting responsibility for the problem, Farmers Elevator will pay for all damages. They believe that the mix-up happened at a plant in Minneapolis where the fertilizer originated.

On June 5th the course was closed and removal of topsoil was started. Approximately 50,000 yards were removed to a depth of six inches. Activated charcoal was applied and worked into the sub-soil. Clean soil was brought in, leveled and seeded. The first seeding was with a beryllium seeder and a 70% rye/30% bluegrass mix. Near the end of August a straight bluegrass was slitseeded in. The catch was very good, and 1992 should be golf as usual.

Several years ago a retiring superintendent said, "We have the greatest job in the world, the only problem would be golfers."

I can assure you that after this year I feel a golf course without golfers is just a park after 10:00 p.m.

I would like to thank all the super's who have called and wished me good luck.

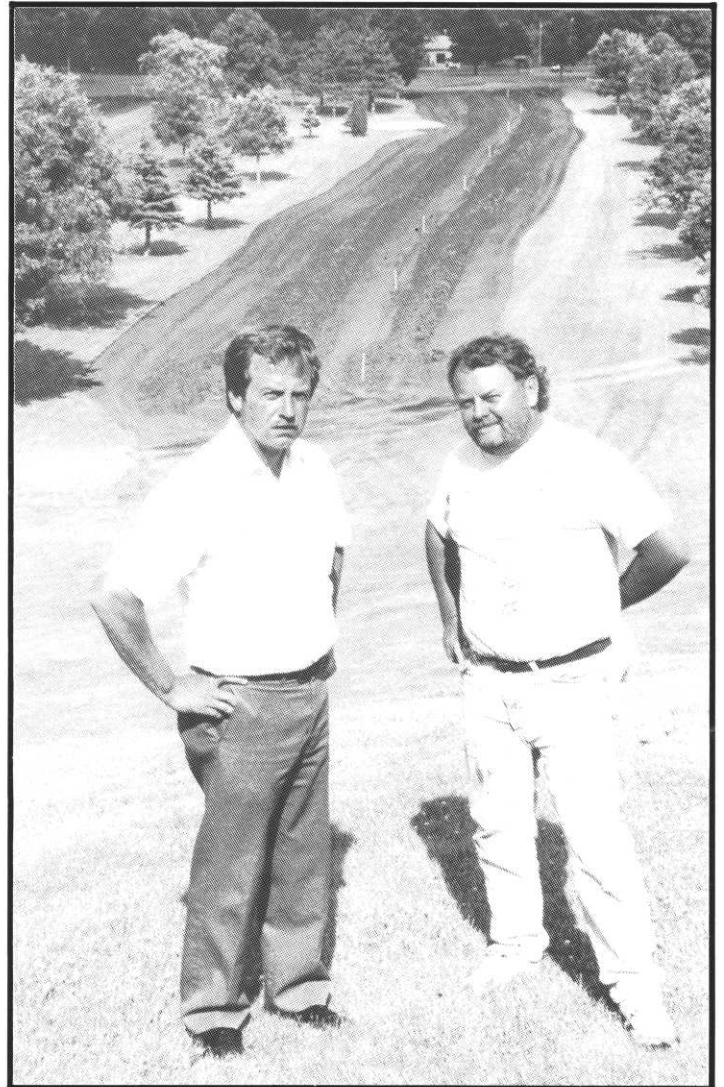
WELL- TEAMED. WELL- NAMED.

It takes years of testing at many locations for any grass seed variety to make the NK Medalist® team. That's why Medalist is the most-trusted name in turf mixtures and blends.

Contact your NK Medalist distributor today.
Or call 1-800-545-6093.



Your local NK Medalist representative
is Mark Grundman.



REVIEWING LAKE CITY'S SECOND FAIRWAY after removal and replacement of soil are Head Golf Course Superintendent Cliff Reynolds, right, and Robert Cliff, president of Lake City Country Club.

EDITOR'S CORNER

By John Harris
The Lafayette Club



September, like much of the season, has seen an above average rainfall and is raising havoc with our Fall maintenance practices. Cores from the aerifiers never seem to dry and produce less than the desired results in the short run.

Leaf removal becomes difficult as all debris seems to mat in place. Carts have been restricted which creates lost revenue to your club in a year where consumer spending is already low.

All and all I have seen and heard many favorable comments about playing conditions throughout the state.

This goes to show that superintendents in our association and elsewhere bend with the weather patterns. They pay close attention to their particular microclimate, adjust accordingly and produce a superior product even in a difficult year.

* * * *

Bob Mugaas contacted my office to bring me up to date on the future of his extension service. The commissioner has reinstated their department and accepted a budget in principal for 1992. Bob graciously thanks those of you that phoned or wrote to the county commissioner's office lending support for this vital link to the University of Minnesota agricultural department.

* * * *

Dale Wysocki has proposed an increase in monthly meeting fees to help beef up the scholarship fund. The board approved his proposal and will be implemented at the Hastings meeting. With the rising costs of tuition, books and living expenses, it would seem apparent to keep our scholarship fund in focus with the times.

* * * *

The GCSAA has asked our help (and the help of all chapters) to support its membership drive. For those of you that do not have a membership with the national — for whatever reason — speak with someone who does. That person has a number of mailings (brochures) outlining the benefits of belonging to this organization. I think you will find it within your means to join and certainly "what you see is what you get...and get...and get..."

* * * *

Hope to see you at Hastings, weather permitting, it should be one of those rare colorful outings that seem to be all too few.

—John Harris
Editor



WELL DRILLING FOR FOUR GENERATIONS

E. H. Renner & Sons INCORPORATED

SPECIALIZING IN:

Irrigation Supply Wells
Variable Frequency Drives
Line-Shaft Turbine Pumps
Submersible Pumps

(612) 427-6100

24 HOUR TELEPHONE ANSWERING

FAX 427-0533

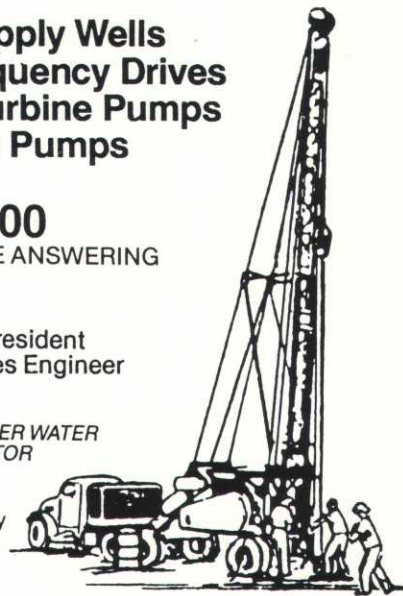
Roger Renner, President
Jerry Aljets, Sales Engineer



CERTIFIED MASTER WATER
WELL CONTRACTOR



Equal opportunity
employer



15688 Jarvis St. NW • Elk River, MN 55330

LEITNER COMPANY

Soil mixing and processing specialists

Supplying the Golf Course Industry with soil and sand products for over 50 years.

From 10 yards to 10,000 yards - material to specification for topdressing and construction.

Quality - Reliability - Experience

Mike Leitner

Leitner Company

945 Randolph Avenue
St. Paul, Minnesota 55102

(612) 291-2655

Let Toro Help Reduce Your Mowing & Maintenance Time

The Reelmaster® 223-D



The lightweight fairway mower with the durability and high capacity you expect. Its superb performance in ground following, grass catching and striping provides superior appearance and playing conditions.

Greens Aerator



Compare that to the competition. Toro keeps you way out in front because of its increased ground speed — and wider coring width. 13,000 square feet per hour means you'll do the job almost twice as fast as you're doing it today.

Greensmaster® 3000



For years, the Greensmaster® 3000 has been delivering a precise, uniform height of cut for superb appearance and playing characteristics.

Reelmaster® 216



Versatile. Productive. And extremely maneuverable. The Reelmaster® 216 effortlessly delivers better turf appearance regardless of terrain.

SandPro® 14



To keep your traps looking and playing their best, you need the SandPro 14. We designed it to work harder and last longer to save you time and money. We gave it a 14 HP Kohler Engine, three drive wheels each with its own hydraulic motor, and hydraulic raising and lowering of all implements.

Groundmaster® 300



Groundmaster® 300 Series — built to master the unrelenting lay of the land, powered to take charge and designed to maximize mowing, productivity without losing the maneuverability needed for close landscapes.

MTI DISTRIBUTING CO. **TORO**

14900 Twenty-first Avenue North • Plymouth, Minnesota 55441 • Phone (612) 475-2200