

COMPARING APPLES TO APPLES???

YOU SHOULD BE COMPARING

“THE CORES”

Faster is not always better. The speed of an aerifier is not a true indicator of aerifying performance! Other factors to be considered in aerifier selection are: **DEPTH OF PENETRATION** and **NUMBER OF HOLES PER SQUARE FOOT**.

The Ryan GA-30 penetrates turf to a depth of 3¾". A full ¾" to 1" deeper than other models. Aeration patterns can be adjusted from 1" hole spacing for intensive aerifying and renovation, on up to a full 5" spacing for general purpose uses.

You ride instead of walk, and transport between areas at a full 6 MPH.

If you are in the process of trying to compare one aerifier to another, *GIVE US A CALL*. We'll show you how to compare **THE CORES**, so you don't end up with a bad apple!!!



RYAN®

BUILT TO LAST

Distributed Exclusively By:

(800) 592-9513
(612) 484-8411

NST

NORTH STAR TURF, INC.

3080 Centerville Road
St. Paul, MN 55117

Constructing A Chemical Rinse Pad For Golf Courses

It seems like there should be simple, everyday solutions to questions about the proper ways to store, mix, load and apply turf and ornamental pesticides. However, state and federal regulations are rapidly becoming more complex and restrictive. Newly proposed FIFRA regulations would restrict the areas where mixing, loading and rinsing of pesticides can take place.

Faced with this prospect, many superintendents and other chemical users are asking what they can do to be prepared for the new laws and regulations. Of course, no one has a crystal ball, but some areas of turf chemical use seem more likely to change than others.

You may know that it is not a good practice to mix and load pesticides repeatedly in the same area. This practice can cause pesticides to build up in concentrations. Yet, it is a mistake commonly made, since that's where the water for mixing and rinsing is located.

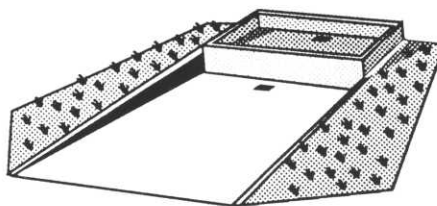
What can superintendents do? You may want to construct a concrete rinse pad to prevent inadvertently spilled turf chemicals from leaching into groundwater or contaminating streams or ponds.

Simple, Efficient Design

There are many ways to design and build a cement mixing/loading pad. One simple design was developed by Ronald T. Noyes, extension ag engineer at Oklahoma State University. His standardized, modular design uses input from numerous engineers, researchers and regulators. A key feature is that it provides size flexibility, allowing superintendents to scale the construction costs for a 20- x 25-foot rinse pad, including professional labor, to be about \$900 to \$1,300, excluding equipment such as a sump pump and holding tanks.

The basic design for the Noyes system guides the construction of a watertight, reinforced concrete pad large enough to hold the largest application vehicle you use, plus containment areas for rinse water storage tanks and mixing and loading equipment.

The pad is sloped to the center and contains floor drains to a sump for easy discharge. Steel-grated, shallow concrete collection sumps serve as sediment settling basins and are designed to collect spills and rinse water for transfer to above-ground rinsate tanks. A pump can



also be used to move solutions directly from the drain valve on your sprayer into rinsate storage tanks.

Capturing Waste Water

To use the rinse pad, the superintendent drives the sprayer onto the concrete pad and makes sure that the sump drain valve (if installed) is locked in the closed position. Any leftover field-strength chemical rinse water from the sprayer drain valve is pumped into a marked rinsate tank. Any spills can be hosed into the sump for later recovery.

Rinse water, or rinsate, can be stored temporarily in various types of holding tanks, including portable tanks. More than one rinse water tank will be needed. By collecting rinse water into different tanks, it can be used as makeup water the next time the product or a compatible chemical is sprayed. Caution should be used to follow label instructions and mix only label-compatible turf chemicals.

Selection of a suitable site for the rinse pad is also important. It should not be in a location where the water source can be contaminated by an accidental spill. If possible, pick a site that has not already been used for chemical storage, mixing/loading or equipment rinsing. If that is not possible, take precautions to remove contaminated soil or otherwise decontaminate the site before constructing a rinse pad.

If you would like more information about Noyes' rinse pad, you may write him at the following address:

Cooperative Extension Service
224 Ag Hall
Oklahoma State University
Stillwater, OK 74078

This article was adapted from a fact sheet developed by ACRE, the Alliance for a Clean Rural Environment. ACRE is a non-profit organization that encourages environmental stewardship and water quality protection.

1991 MGCSA Monthly Meeting Sites

Date	Location	Sponsor
June 3	Pebble Creek (lunch)	MTI - Neary Mfg.
July 8	Izaty's (lunch)	Lesco - Deep Tine Aerifying, Keith Faber, Five Star Deep Aerifying Co.
Aug. 19	New Richmond, Wis. MGCSA Championship (dinner)	Polfus Implement
Sept. 16	Golden Valley/Oak Ridge Research Tournament (Dinner at Oak Ridge)	
Oct. 7	Hastings (lunch)	R&W Golf Cars
November (first wk.)	Weather permitting, golf at Mankato	
November 20-21-22	Annual Conference Northland Inn	

**Minimum Wage
Increases But
There Are
Exemptions**

As many of you already know, the minimum wage rose to \$4.25 per hour as of April 1. In addition, the Fair Labor Standards Act also requires time-and-one-half pay for more than 40 hours of work per week.

However, there are exemptions for both the minimum wage and overtime pay requirements for golf courses that

operate seven or fewer months per year, or that earned at least two-thirds of their income during a six-month period of the previous calendar year. There are also provisions for employers to pay a training wage for up to 90 days.

Workers must be under 20 years of age and the training wage must be at least 85 percent of the minimum wage.

Monroe Miller, superintendent at Blackhawk CC in Madison, Wis., said his course's base wage has been affected by the increase. However, he said he anticipated the increase and budgeted for the impact on his payroll expense.

"I think the kids deserve it. They work hard and are here at 5 a.m. sharp," Miller said. "I usually start out employees at a level higher than the minimum wage anyway."

FOR SALE

2 - completely reconditioned triplex greens mowers.

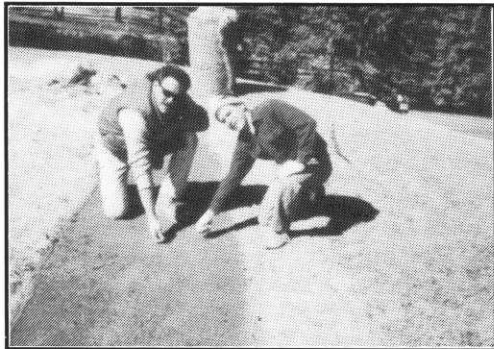
Call 507-388-2546

Curlex
GREENSAVERS

WINTER PROTECTION AGAINST

DRYING
WINDS

FREEZING
COLD



ESTABLISH QUALITY GREENS EARLY

**USED TO PROTECT THE GREENS FOR THE 1991 U.S. OPEN*

EXTEND PLAYING SEASON 2-3 WEEKS

REUSABLE

DEVELOPED IN MINNESOTA

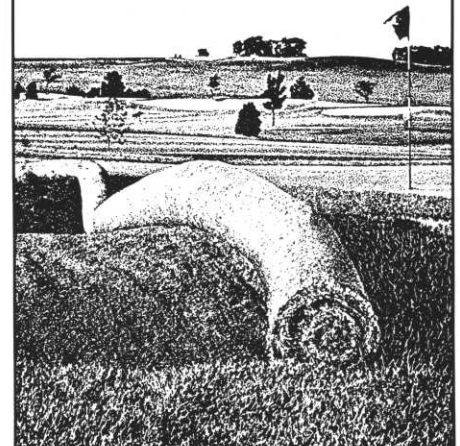


American Excelsior Company

AN EMPLOYEE OWNED COMPANY

(612) 331-1831, (800) 328-4827 EXT. 1163

To get better
Pythium
protection
than Aliette®
you'd have to
take in the
turf at night.



RHONE POULENC AG COMPANY

P.O. Box 12014, 2 T. W. Alexander Drive
Research Triangle Park, NC 27709
919/549-2000

EPA, GCSAA Developing Public Education Campaign

Superintendents may be fielding more questions about environmentally responsible turf management as a new public education program gets underway. The joint EPA/GCSAA television public service announcement campaign, which reminds homeowners to "play it safe and think before you apply," has already attracted a number of media inquiries at GCSAA headquarters.

GCSAA-affiliated chapter presidents, government relations liaisons and members may view such inquiries as excellent opportunities to educate the public about topics such as integrated plant management, water protection, chemical use reduction, hazard communication and how golf courses use environmentally responsible practices. Specific questions about the "Think Before You Apply" campaign may be directed to GCSAA's communications department.

The PSAs have been distributed throughout the country, to network affiliates in the top 35 U.S. television mar-

kets and other key regions, as well as leading national cable TV networks.

The 30- and 10-second spots instruct viewers to follow directions on chemical containers and to use only the amount needed to do the job. The commercials include a toll-free number (800/858-7378) that viewers may call to receive more information from EPA about the subject.

Pesticides Studied

EPA is consulting with the U.S. Fish and Wildlife Service to determine whether some registered uses of 31 pesticides need to be limited in order to protect endangered species.

Among the pesticides to be examined are some golf course chemicals: acephate (Orthene), bendiocarb (Turcam), chlorpyrifos (Dursban and others), potassium nitrate, trifluralin (Treflan, Team and others), methyl bromide, aluminum phosphide (Phostoxin), azinphos methyl (Guthion), fenvalerate, naled and permethrin.

TURFCO

USED EQUIPMENT FOR SALE:

Ransomes 180 Triplex Mower, low hours, reels sharpened last fall
\$4800

Burkeen B30 Plow with trencher and boring attachment \$14,800

Pipe Piper Model 175 Plow \$4900

Call Scott,
days 612-785-1000,
evenings 612-754-8873

par ex[®]

The Ex Stands For Excellence

Why the EX STANDS FOR EXCELLENCE in professional turf care.



- Par Ex is the only professional fertilizer line containing IBDU, undisputedly the finest slow release Nitrogen source in the world.
- IBDU gives you the highest level of WIN, or Water Insoluble Nitrogen.
- IBDU delivers all of its Nitrogen in a single growing season.
- The Nitrogen release rate of IBDU is generally affected by only two factors: soil moisture and granule size.
- Slower release makes Par Ex products perfect for your Fall Fertilization program.
- Fewer applications are required, labor costs are cut.
- The salt index of IBDU is the lowest of all commonly used fertilizer materials.
- IBDU fights nitrate pollution because very little Nitrogen is lost through leaching or volatilization.
- Choose from over 60 different product formulations.

TURF SUPPLY CO.
2797 Eagandale Blvd.
Eagan, MN 55121
Tel: 612-454-3106
Fax: 612-454-7884

ED LONG
Territory Manager
Tel: 913-897-5604

PRECISION TURF AND CHEMICALS
3145 Sycamore Lane
Plymouth, MN 55441
Tel: 612-559-5293

par ex

The Ex Stands For Excellence

POLFUS IMPLEMENT'S
Large Area Rotary

More than just a mowing machine!

Shown on John Deere 955 Tractor

- 2 Point Coupler (Quick Tach)
- Able to Mow up to 30° Above or Below Horizontal
- Unmatched Maneuverability
- Excellent Serviceability
- Operate Decks Simultaneously or Independently.
- Hydrostatic Drive
- 10 or 11 foot Cut Available.



Watch for John Deere



TEAM CHAMPIONSHIP

**WEDGEWOOD VALLEY GOLF COURSE
JULY 22, 1991**

For more information, contact
Mark Reuter
Polfus Implement

The Wing Mower is designed for those people who need to mow large areas quickly and can utilize the versatility of a compact tractor for other applications. The wing's offset design delivers the convenience of a virtually zero turning radius for close trimming. The unique design gives the operator the ability to keep the tractor on level ground while allowing the wing to mow above or below the horizontal plane.

For further information or demonstration
contact

Polfus Implement

- Hastings
- Stillwater
- New Richmond

Minn. 612-439-6776
Wisc. 715-246-6565

EDITOR'S CORNER

By John Harris
The Lafayette Club



I would like to thank Paul Diegnau and his staff for providing us with an excellent facility for our May meeting site. The course was in fine shape and the layout was interesting to say the least. Thanks also go to Turf Supply for providing the speaker of the day, Brady Surrena.

* * * *

I believe we can call the drought officially drowned out (can you say Open Rough?). Irrigation pumps sit idle, renovation projects are on hold and scheduling of personnel has been dictated to us by Mother Nature. If there were a market for Poa seed, I would be a wealthy man. Frequent rains have wrought meager rooting depths to Lafayette and could pose a significant threat in the late summer months. I plan on using a high K in our fertility program to promote rooting and alleviate frequency of spiking and/or aerifying. Of course, much will depend on the upcoming weather patterns. Whatever they may be, I will stay flexible and adjust accordingly.

* * * *

The M.G.C.S.A. hospitality tent has again been shifted back to its original site which is between the 1st tee and the pro shop. Rick Fredericksen has made the necessary arrangements for banners, videos and the likes to promote our chapter. Those of you who will be manning the tent, thank you for your time and support. This is an excellent opportunity to market our profession, so bring your best smiles. Those of you who plan on attending the G.C.S.A.A. reception at the Radisson South, it is my understanding that it's a very formal affair, so please dress accordingly.

—John Harris, Editor



PLEASE NOTE NEW GCSAA PHONE NUMBERS

The Golf Course Superintendents Association of America has changed its telephone numbers to provide direct dialing and to serve you better!

Main Number: (913) 841-2240
Conference & Show: (913) 832-4430
Advertising/Sales: (913) 832-4440
Education: (913) 832-4444
Communications: (913) 832-4470
Membership: (913) 832-4480
Publications: (913) 832-4490

FAX # Membership, Administration, Planning: (913) 832-4455
FAX # Communications, Publications, Advertising/Sales: (913) 832-4466
FAX # Education, Marketing, Conference & Show: (913) 832-4433

GCSAA's new address is:

1421 Research Park Drive • Lawrence, KS 66049-3859

Do You Just Belong?

Are you an active member,
The kind that would be missed,
Or are you just content
That your name is on the list?
Do you attend the meetings
And mingle with the crowd,
Or do you stay at home
And crab both long and loud?
Do you ever go to visit
A member who is sick,
Or leave the work to just a few
And talk about the clique?
There is quite a program scheduled
That means success, if done,
And it can be accomplished
With the help of every one.
So attend the meetings regularly
And help with hand and heart,
Don't just be a member,
But take an active part.
Think this over carefully,
Are we right or are we wrong?
Are you an active member,
Or do you just belong?

Anon

LEITNER COMPANY

Soil mixing and processing specialists

Supplying the Golf Course Industry with soil and sand products for over 50 years.

From 10 yards to 10,000 yards - material to specification for topdressing and construction.

Quality - Reliability - Experience

Mike Leitner

Leitner Company

945 Randolph Avenue
St. Paul, Minnesota 55102

(612) 291-2655

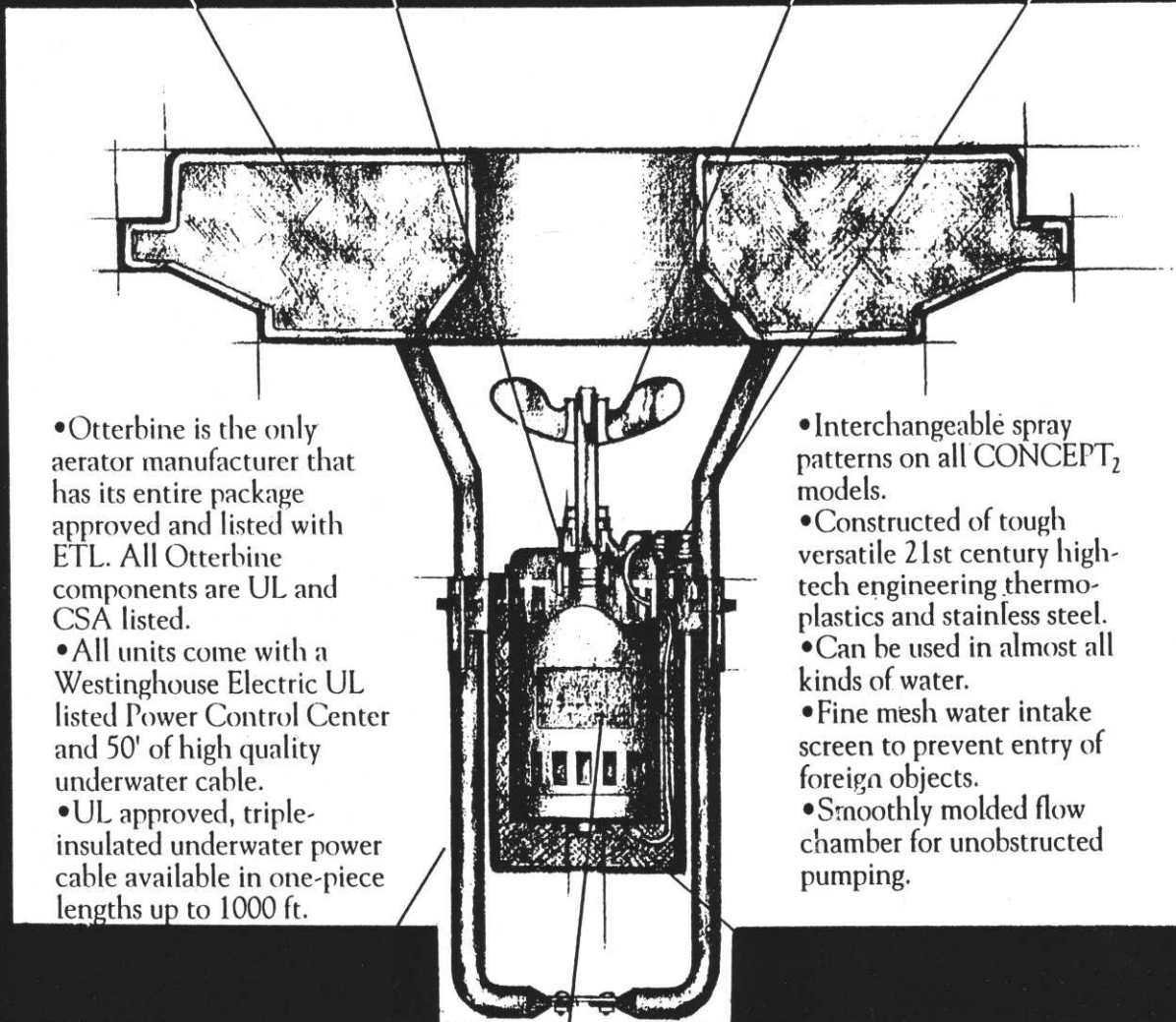
CONCEPT₂: THE NEW HIGH-TECHNOLOGY AERATOR.

U.S. Coast Guard approved closed cell foam filled low visibility polyethylene float.

Precision pitched stainless steel chopper type impellor is virtually unbreakable.

Dynamically balanced rotors reduce vibration, helping to increase bearing life and reduce down time. Bearing and seal are kept cool by a forced lubrication system.

Electrical connector is part of the upper plate to prevent accidental breakage.



- Otterbine is the only aerator manufacturer that has its entire package approved and listed with ETL. All Otterbine components are UL and CSA listed.
- All units come with a Westinghouse Electric UL listed Power Control Center and 50' of high quality underwater cable.
- UL approved, triple-insulated underwater power cable available in one-piece lengths up to 1000 ft.

- Interchangeable spray patterns on all CONCEPT₂ models.
- Constructed of tough versatile 21st century high-tech engineering thermoplastics and stainless steel.
- Can be used in almost all kinds of water.
- Fine mesh water intake screen to prevent entry of foreign objects.
- Smoothly molded flow chamber for unobstructed pumping.



14900 Twenty-first Avenue North • Plymouth, Minnesota 55441
(612) 475-2200 - 1-800-362-3665

DISTRIBUTING CO.

TORO

MAPLEWOOD

225 EAST ROSELAWN AVE
MAPLEWOOD, MN 55117
612-487-2627

FRIDLEY

8041 RANCHERS ROAD
FRIDLEY, MN 55432
612-785-2430

BURNSVILLE

1103 RIVERWOOD DRIVE
BURNSVILLE, MN 55337
612-890-3720

FARGO

4310 MAIN AVE
FARGO, ND 58104
701-281-0775
1-800-782-1031