

HOW TO PREVENT DOLLAR SPOT AND BROWN PATCH FROM RUINING YOU ON INSPECTION DAY.

The Banner Preventive Program.

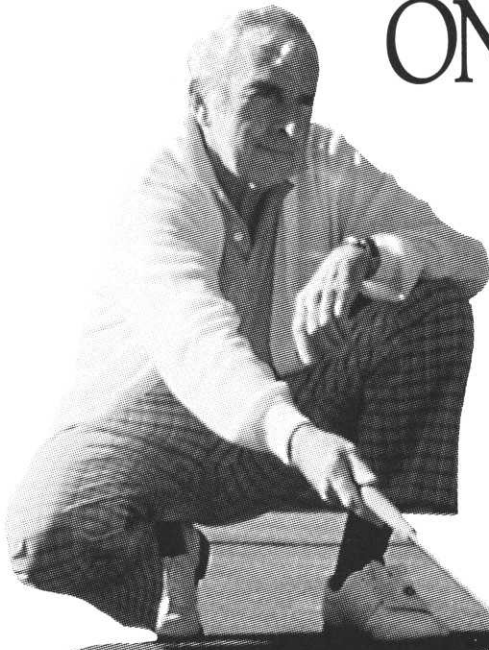
Begin applications early, *before* symptoms appear and prevent diseases from ruining your course in-season.

	Rate	Interval	Applications
Dollar spot	1 oz.	28 days	April-May through September
Brown patch	2-4 oz.	10-21 days	May-June through September

TURF SUPPLY COMPANY
(612) 454-3106



CIBA-GEIGY

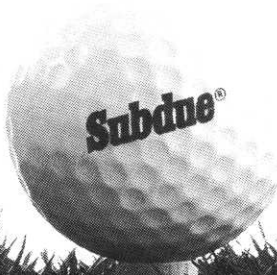
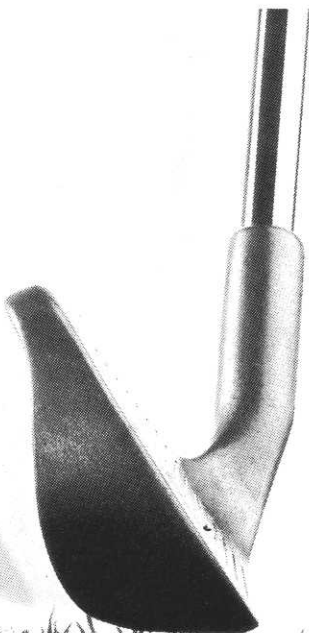


Turf Supply Company can furnish the following specialty items:

Want A Superior Playing Surface? Rely On Subdue.[®]

The quality of your fairways and greens is on exhibit every day. For a playing surface to stay in peak condition you've got to control Pythium. But the heavy traffic and stress that your turf must endure may leave it looking ragged.

That's why smart course managers use Subdue in their programs to create superior playing surfaces on greens and fairways.



TURF SUPPLY COMPANY • 454-3106

Toro, Motorola Announce OSMAC Distribution Plan

The Toro Irrigation Division has announced an agreement between The Toro Company and Motorola, Inc. for distribution of the second generation OSMAC system, a central-based irrigation control system.

Motorola was a winner of the first annual Malcolm Baldrige National Quality Award in 1988 in recognition of its superior company-wide quality management process.

Those interested in additional information regarding the OSMAC (On Site Management and Control) system should write or call The Toro Company, Irrigation Division, 5825 Jasmine Street, Riverside, CA. 92504. (714) 688-9221.

MEMBERSHIP REPORT

NEW MEMBERS—JUNE 3, 1991

Charles Bowman	Moorhead Country Club	Class	BII
Charles Cornelius	Anoka Technical College		C
Donald Phenow	Minneapolis Park Board		E
Steven Spaulding	St. Cloud Country Club		C
Martin Terveer	Northfield Golf Club		BII
Steven Beahen	Minnesota Mod Sod		F
Ken Fields	Wheeler Consolidated Inc.		F
Mark Grundman	NK-Lawn & Garden-Medalist Div.		F
Donald Haukom	Rivard's Quality Seeds Inc.		F
Richard Rindal	Viking Safety Products		F
Mike Keller	Keller Fence Company		F

RECLASSIFICATION—JUNE 3, 1991

Thomas Meier	Worthington Country Club	BII to B
Michael Ligday	Manitou Ridge Golf Club	BII to B

Mike Olson, Membership Chairman

par ex
The Ex Stands For Excellence

Why the EX STANDS FOR EXCELLENCE in professional turf care.



- Par Ex is the only professional fertilizer line containing IBDU, undisputedly the finest slow release Nitrogen source in the world.
- IBDU gives you the highest level of WIN, or Water Insoluble Nitrogen.
- IBDU delivers all of its Nitrogen in a single growing season.
- The Nitrogen release rate of IBDU is generally affected by only two factors: soil moisture and granule size.
- Slower release makes Par Ex products perfect for your Fall Fertilization program.
- Fewer applications are required, labor costs are cut.
- The salt index of IBDU is the lowest of all commonly used fertilizer materials.
- IBDU fights nitrate pollution because very little Nitrogen is lost through leaching or volatilization.
- Choose from over 60 different product formulations.

TURF SUPPLY CO.
2797 Eagandale Blvd.
Eagan, MN 55121
Tel: 612-454-3106
Fax: 612-454-7884

ED LONG
Territory Manager
Tel: 913-897-5604

**PRECISION TURF
AND CHEMICALS**
3145 Sycamore Lane
Plymouth, MN 55441
Tel: 612-559-5293

par ex
The Ex Stands For Excellence

1991 MGCSA Monthly Meeting Sites

Date	Location	Sponsor
July 8	Izaty's (lunch)	Lesco - Deep Tine Aerifying, Keith Faber, Five Star Deep Aerifying Co.
Aug. 9	New Richmond, Wis. MGCSA Championship (dinner)	Polfus Implement
Sept. 16	Golden Valley/Oak Ridge Research Tournament (Dinner at Oak Ridge)	
Oct. 7	Hastings (lunch)	R & W Golf Cars
November (first wk.)	Weather permitting, golf at Mankato	
November 20-21-22	Annual Conference Northland Inn	



"I just noticed — you're getting bald."



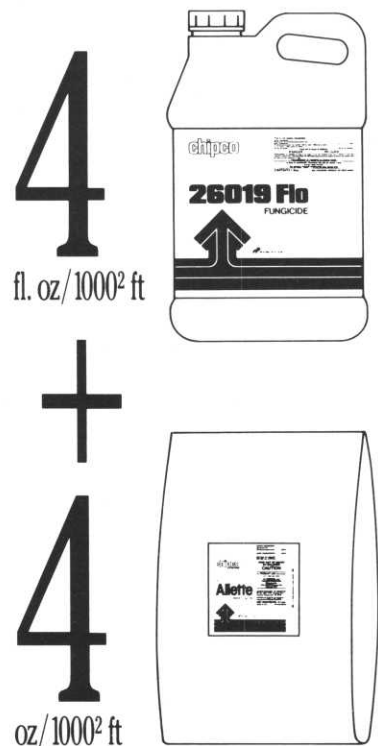
Golf Course Accessories

Ballwashers • Detergent • Mounting Pipes & Bases • Tee Signs • Spike Brushes • Hole Cutters • Flag Poles • Flags • Cups • Rakes • Benches • Tee Markers • Practice Greens Markers • Whipping Poles • Course Signage • And More.

Requested by players. Preferred by course professionals. Specified by designers and used with pride wherever golf is played.

Call your Par Aide dealer today for our **FREE CATALOG**, or call us at 612/779-9851 for the name of the dealer nearest you.

© 1990; Par Aide Products Co., St. Paul, MN.



Outstanding, longlasting control of dollar spot, brown patch, pythium and more.

RHONE POULENC AG COMPANY
P.O. Box 12014, 2 T. W. Alexander Drive
Research Triangle Park, NC 27709
919/549-2000

Golf Course Remodeling Remains Strong

Although the spotlight in recent years has been on new golf course construction, hundreds of courses continue to implement remodeling plans, says Dan Maples, president of the American Society of Golf Course Architects.

"Many older courses recognize the need to renovate their greens, tees, fairways and bunkers," says Maples, "and the way to do this properly is to develop a master plan in conjunction with an experienced golf course architect."

In many cases, Maples said, the master plan is implemented over a 3-5 year period to spread out costs and minimize disruptions to players.

Green chairmen, committee members and others responsible for the maintenance and improvement of golf courses may obtain a free brochure, *Master Planning: The Vital First Steps in Golf Course Construction*, by sending a stamped, self-addressed business envelope to the American Society of Golf Course Architects, 221 N. LaSalle St., Chicago, Ill. 60601.

Golf Helps Cut Cholesterol

Golf apparently has more health benefits than it's given credit for.

Doctors at the New Hampshire Heart Institute in Manchester enlisted 28 previously inactive men between ages 48 and 80 to play three rounds of golf a week for four months. They walked an estimated 14 miles each week.

The golfers all had significant declines in their total cholesterol, despite no changes in diet. They also had significantly improved ratios of high-density lipoprotein cholesterol to total cholesterol.

Fetal Protection Policy Ruled Discriminatory

Employers cannot bar women from jobs that could be hazardous to fetuses, the U.S. Supreme Court ruled, saying that decisions about the welfare of unborn

children must be left up to parents.

In a unanimous ruling, the court held that an automobile battery manufacturer's fetal-protection policy violated Title VII of the 1964 Civil Rights Act and the 1978 Pregnancy Discrimination Act. The policy banned women who could not prove they were infertile from working in areas where they would be exposed to lead.

The court ruled that the company's fetal-protection policy was sex discrimi-

nation (because studies show that lead also harms the male reproductive system) and that neither sex nor pregnancy would interfere with the employee's ability to perform the job.

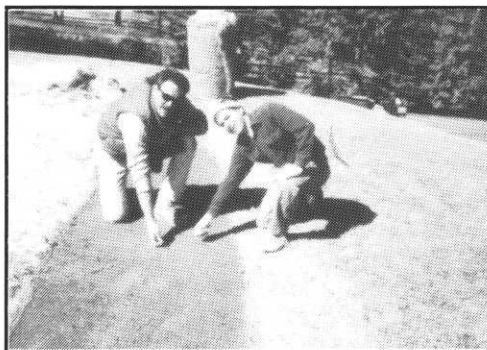
Golf operations should examine their employment policies to make sure they do not unfairly discriminate on the basis of sex or pregnancy—even in potentially hazardous jobs such as mixing, loading and applying pesticides.

Curlex GREENSAVERS

WINTER PROTECTION AGAINST

DRYING
WINDS

FREEZING
COLD



ESTABLISH QUALITY GREENS EARLY

**USED TO PROTECT THE GREENS FOR THE 1991 U.S. OPEN*

EXTEND PLAYING SEASON 2-3 WEEKS

REUSABLE

DEVELOPED IN MINNESOTA



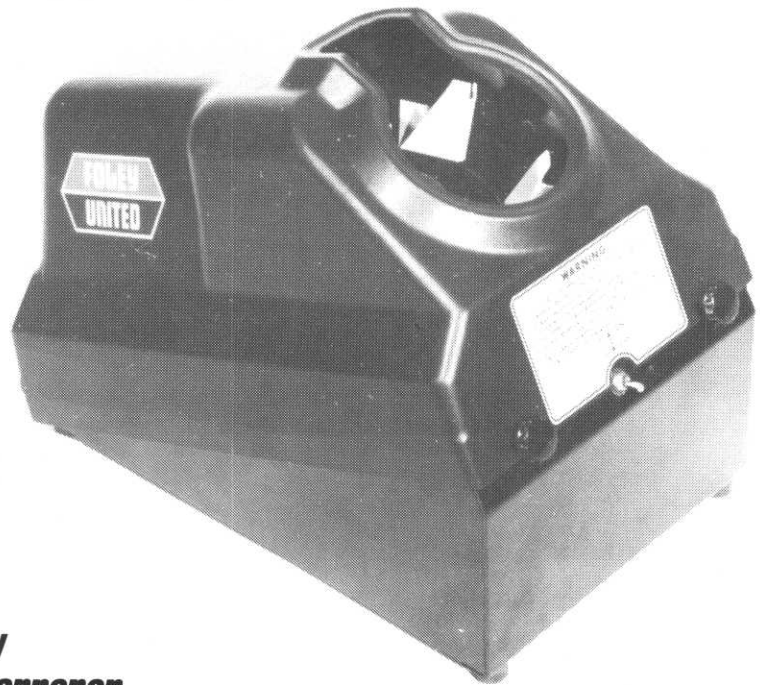
American Excelsior Company

AN EMPLOYEE OWNED COMPANY

(612) 331-1831, (800) 328-4827 EXT. 1163



MODEL 386 HOLE CUTTER SHARPENER



***Foley-United's New
Model 386 Hole Cutter Sharpener
puts a razor edge on your hole cutters
in a matter of seconds.***

It can easily do 4 or 3 scallop, or plain edge cutters by simply changing grinding disc sizes.

Simply place your hole cutter in the Model 386, slightly rotate and a perfect razor edge is put on your hole cutter.

Easily operated by anyone, the Model 386 with its molded plastic cover, sits on the floor and can be turned on with your foot. One grinding disc can be turned to do up to 400 edges before being replaced.

"Distributed Exclusively By"

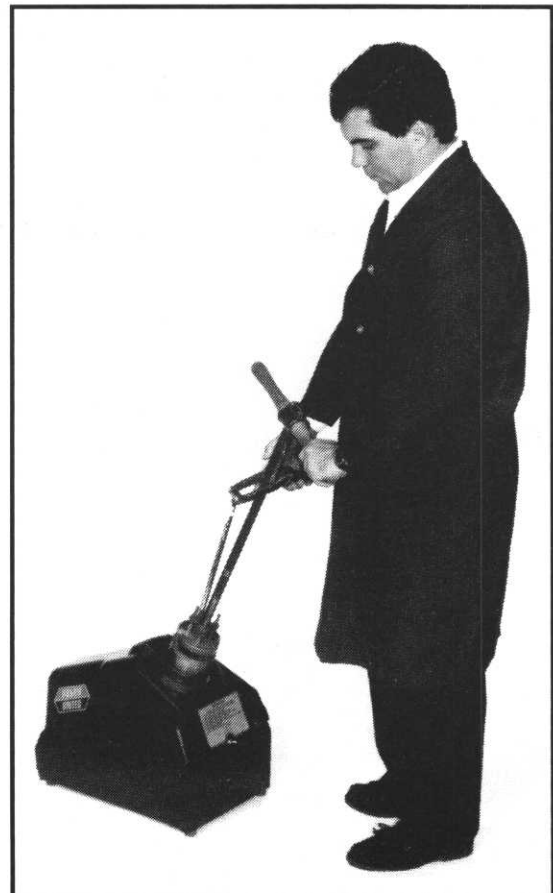


"We Initiate Satisfaction"

NORTH STAR TURF, INC.

3080 Centerville Road
St. Paul, MN 55117

(612) 484-8411
(800) 592-9513



UTI-237 1/91

EDITOR'S CORNER

By John Harris
The Lafayette Club



From my viewpoint the U.S. Open was one to remember. We saw unprecedented attendance by the general public right down to the playoff.

The facilities were well-equipped to handle the crowds, and the smiles were abundant.

Hazeltine Superintendent Chris Hague and his staff did a superb job preparing the playing surface. Fairways and tees were of the finest quality anywhere.

We saw green speeds reaching into the 14-foot range, making birdie putts a difficult thing to come by. Surely, Hazeltine has shaken its past history and will be remembered as one of the most challenging layouts in golf.

* * * *

The MGCSA tent was worth its weight in touring pros. Rick Fredericksen is to be commended for coordinating the materials and staffing. A number of superintendents, dignitaries and curious sightseers stopped to inquire. I even had one greens chairperson who was willing to purchase the environmental packet.

* * * *

The GCSAA reception held in honor of Chris Hague and his staff was held at the Radisson South in Bloomington and was well-attended. Indeed, it was a memorable moment when Steve Cadanelli introduced Chris. The ensuing standing ovation was well-earned. It was a sight this superintendent will never forget.

* * * *

Our deepest sympathy goes out to Tom Stelter, whose wife passed away suddenly. Please help Tom in this difficult time by sending him your condolences. Moral support can be such a help, and it reminds us all of the fellowship involved in an association such as ours.

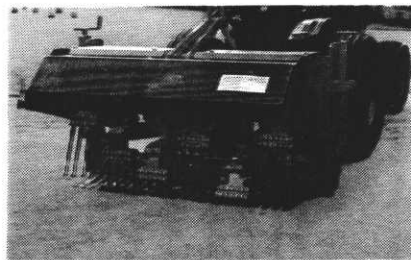
* * * *

Thanks go to Cary Femrite for a wonderful outing at Pebble Creek Golf Course, which was in excellent condition. I have heard many positive comments directed towards Cary and his staff.

— John Harris
Editor



VERTI-DRAIN®



**"WORKS LIKE A PITCHFORK
ONLY DEEPER AND BETTER"**

COMMERCIAL TURF

BRYAN WOOD

Serving MO, IA, KS, NE, IL, MN, ND, SD

Your authorized distributor for contracting, sales, leasing, parts, service and consulting.

★ ★ ★

Five years experience, throughout 16 states, aerating 20 million square feet of turf in about every soil condition, means we can share valuable knowledge about the Verti-Drain® with you! Call toll free:

1-800-748-7497

LEITNER COMPANY

Soil mixing and processing specialists

Supplying the Golf Course Industry with soil and sand products for over 50 years.

From 10 yards to 10,000 yards - material to specification for topdressing and construction.

Quality - Reliability - Experience

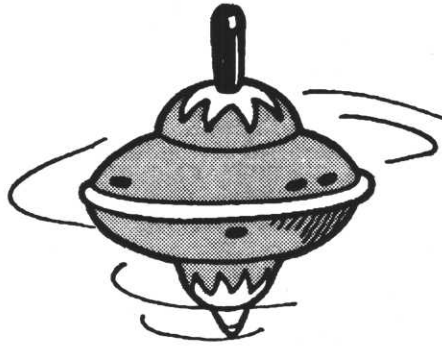
Mike Leitner

Leitner Company

945 Randolph Avenue
St. Paul, Minnesota 55102

(612) 291-2655

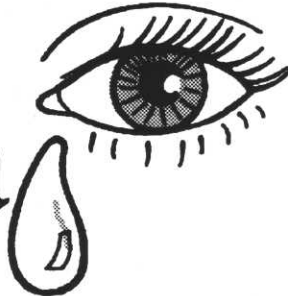
For



ing



ma



(612) 441-1100

For topdressing materials, call Plaisted Companies, (612) 441-1100

- BUNKER SAND
- GREENS MIX
- TOPDRESSING
- CART PATH AGG.
- CLASS 5 & 2
- EXTRA FINE SAND
- DECORATIVE ROCK
- BLACK DIRT
- MASON SAND
- ROCK
- FILL MATERIAL
- BUCKSHOT

"Quality Golf Course Materials"



P.O. Box 332
11555 205th Avenue N.W.
Elk. River, MN 55330
(612) 441-1100
Todd Plaisted
John Plaisted