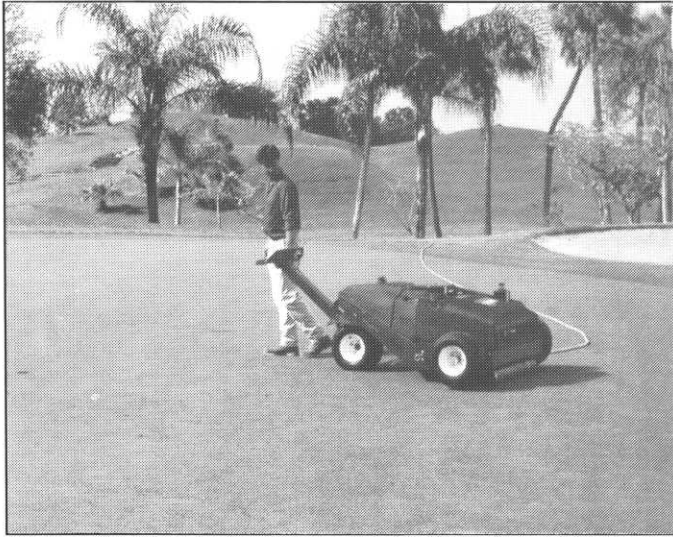


TORO**Toro has an aerator that's right for you.****TORO**

Hydro-Ject™ 3000



A revolutionary turf cultivation tool that deeply aerates compacted soils without causing surface disturbance using high velocity water.

Greens Aerator

Get in 18 holes in the time it took you to do 9



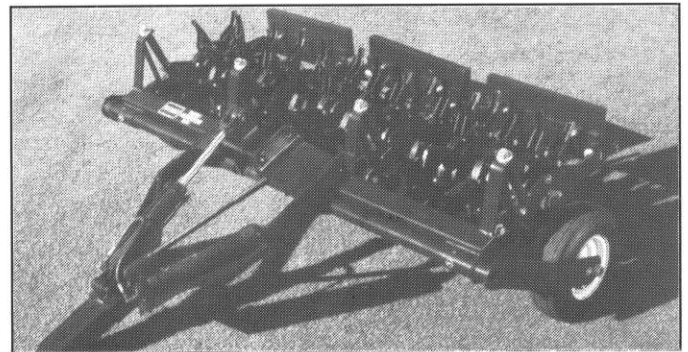
Compare that to the competition. Toro keeps you way out in front because of its increased ground speed—and wider coring width. 13,000 square feet per hour means you'll do the job almost twice as fast as you're doing it today.

Fairway Aerator



Productivity, extra depth and durability in one machine. . . This 1.5 acre per hour aerator gives fairways and other large turf areas the same quality aeration previously limited to greens.

Turf Aerator 686



Three independent coring heads follow the ground contour both vertically and horizontally over uneven turf conditions. You get deep penetration with twelve (12) 70 lb. castings spread across a 6½ foot aerating swath for those large turf area jobs.

Choose from three tractor-drawn aerators to effectively and economically aerate your general turf areas.

MTI DISTRIBUTING CO.

TORO

14900 Twenty-first Avenue North • Plymouth, Minnesota 55441 • Phone (612) 475-2200

HOLE NOTES

Official Publication
of the
Minnesota Golf Course
Superintendents' Association

1989-90 MGCSA BOARD OF DIRECTORS

Officers

President Kerry Glader, CGCS
St. Cloud Country Club
612/253-5250

Vice-President Tom Fischer, CGCS
Edinburgh USA
612/424-8756

Secretary Rick Fredericksen, CGCS
Woodhill Country Club
612/473-5811

Treasurer Jim Nicol, CGCS
Bunker Hills Golf Course
612/755-4150

Ex-Officio Keith Scott, CGCS
Oak Ridge Country Club
612/938-6900

Directors

Kevin Clunis Stillwater Country Club
612/439-7760

John Harris Lafayette Club
612/471-8493

Greg Hubbard, CGCS Manitou Ridge
Golf Course
612/777-2987

Bill Johnson Edina Country Club
612/922-9012

Joe Moris Tartan Park Golf Course
612/733-3472

Steve Schumacher Hastings Country Club
612/437-7112

EDITORIAL COMMITTEE

Bill Johnson
John Harris

EDITOR

Bill Johnson

ASSOCIATE EDITORS

Jeff Turtinen
Scott Turtinen

PUBLISHER

Ralph Turtinen

Hole Notes Office

Turtinen Communications
240 Minnetonka Avenue South
Wayzata, Minnesota 55391
612/473-3722
FAX: 612/473-0576

Business Office

Minnesota Golf Course
Superintendents' Association
240 Minnetonka Avenue South
Wayzata, Minnesota 55391
612/473-3722
FAX: 612/473-0576

FROM THE PRESIDENT'S DESK

Our Championship Problem May Have Been A Case of 'Open Fever'



As we sometimes find in life, things do not always go as we would have planned them, such as the August Superintendents' Golf Tournament held at Hazeltine National Golf Club.

As your president, I apologize to any member who did not get to play in this event this year. I would like, initially, to say that only MGCSA members were allowed to play! Over the past few years we have not restricted this tournament to only golf course superintendent members in order to keep the attendance and the participation up.

Last year's tournament brought forth 120 total players: superintendents, assistants and associates combined. This year we received 200 entries to fill a maximum field of 140. I suspect that we should have had some foresight to realize that the 1991 U.S. Open course would draw players out of the woodwork!

Through the cracks, the field limit of 140 was omitted from the entry form. Human error does happen. I would add that all entries were taken based on the U.S. Postal Service cancellation stamp on the envelope.

Mail does not always arrive on time. Club accountants do not always send the checks out on time, even if you watch them make the check out and stuff it in an envelope. It does not mean that it got mailed that day.

I know that no further explanation can ease the anger of those of you who could not play. In the future this tournament will be referred to as the Annual Association Golf Tournament, not the Superintendents' Tournament. The Board of Directors has looked into this situation to see if this truly was a problem... or just a case of "Open Fever."

Many thanks to Chris Hague and the Hazeltine National Golf Club for a grand time. A tough, but beautiful golf course was met, and I think all would agree that the course won!

* * * *

The Harold Stodola **Guest** Scramble will be held Monday, September 24, at Dellwood Hills Golf Club. This is the time to bring your club officials, guests or grounds crew to enjoy a good time!

—Kerry Glader
MGCSA President



ABOUT THE COVER

Playing out of a bunker is John Katterheinrich, course superintendent at Interlachen Country Club, Edina, who won the 1990 Championship at Hazeltine with his 39-41-80. For more information and photos, please turn to page 10.

FERTILIZERS? WILBUR-ELLIS!

WITH OUR EXCEPTIONALLY WIDE SELECTION, WE'LL HELP
YOU WITH THE BEST FERTILIZER FOR **YOUR** SITUATION
...AT A VERY COMPETITIVE PRICE.

NUTRALENE Fertilizers - See the Difference

15-0-30)
) Greens Grades) with Nutralene
20-0-20)

24-4-12) Granular

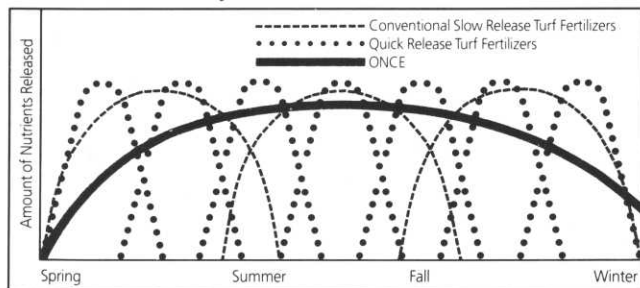
	NUTRALENE [®] (40,0,0)	NITROFORM [®] (38,0,0)	IBDQ (31,0,0)	SCU (32,0,0 to 38,0,0)	UREA (46,0,0)
Release Characteristics	12-16 wks	12-16 mos	12-16 wks	Varies	1-4 wks
Hydrolysis Releasable	■		■	■	■
Microbial Releasable	■	■			
Not dependent on coating or particle size for release	■	■			■
Nonburning	■	■	■	**	
Low Salt	■	■	■		
Minimal Leaching	■	■	■		
Minimal Volatilization	■	■	■	■	

ONCE Season Long - N, P, and K

Temperature Release - Not Affected by
Water or Microbial Action (5-6 months)

Nutrients Released As Turf And Plants Need Them

24-6-11 5-6 months
25-0-18 5-6 months
35-0-6 5-6 months
0-0-47 5-6 months
15-12-13 5-6 months



Wilbur-Ellis Custom Fertilizers

18-3-12) Homogenous Greens Grades

18-5-9)

And a full line of blended and liquid fertilizers

Wilbur-Ellis

FOR MORE INFORMATION, CALL
LARRY THORNTON

1-800-642-2736 or 612/934-4647

63rd Annual Turf Conference Set November 28-30

Northland Inn In Brooklyn Park Is Site of This Year's Session

It's not too early to begin making plans for the 63rd annual MGCSA Turf Conference to be held November 28-30 at the Northland in Brooklyn Park.

Chairman Kevin Clunis, superintendent at Stillwater Country Club, has been accomplishing a lot of advance work and has virtually completed the entire program. A preliminary schedule is presented on this page.

Although the MGCSA has enjoyed considerable cooperation from the hotel staff at the Sheraton Northwest, resulting in several successful conferences, the association is looking forward to the Northland, located just a few hundred yards west of the Sheraton on I-94.

"We'll have a lot more space, the accommodations are outstanding and the prices are reasonable and competitive," said Clunis, who is looking forward to an excellent turn-out.

Pre-registration forms will be mailed in late September.

**MGCSA
63rd ANNUAL TURF CONFERENCE & BUSINESS MEETING
NOVEMBER 28, 29 & 30, 1990
NORTHLAND INN
BROOKLYN PARK, MN**

Wednesday, November 28, 1990

Main Ballroom

PESTICIDE APPLICATORS TRAINING

7:30-9:00 a.m.	Registration
9:00-9:05	Kerry Glader , CGCS, MGCSA President Welcome
9:05-9:30	Wayne Dally , Minnesota Department of Agriculture: Pesticide laws and regulations, storage and transportation, documentation, disposal, record keeping, people and public relations, and special concerns.
9:30-10:15	Dean Herzfeld , Assistant Agriculture Extension Agriculturist, Minnesota Extension Service: Label and label comprehension, protective clothing, hygiene, poisoning and first aid.
10:15-10:30	Break
10:30-11:15	Steve Aunan , Fike Spray Systems: Pesticide safety, environmental considerations, equipment and calibration, calculations and application techniques.
11:15-12:00	Bob Mugaas , Agricultural Extension Agent, University of Minnesota: Weeds and weed control.
12:00-1:00	Lunch
1:00-1:45	Ward Stienstra , Department of Plant Pathology, University of Minnesota: Turf diseases and control
1:45-2:30	John Barten , Water Quality Manager, Hennepin Park District: Aquatic Weeds and Control Methods, Laws & Regulations
2:30-2:45	Break
2:45-4:15	Ernie Larson , Motivational Speaker
4:30-5:30	MGCSA Business Meeting

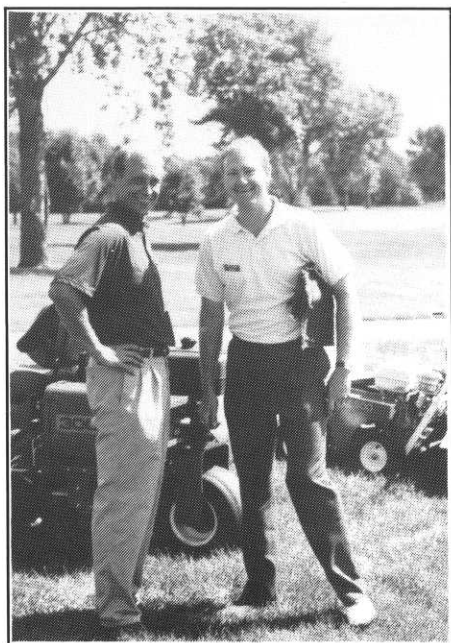
Thursday, November 29, 1990

7:30-9:00	Registration
7:30-8:30	FELLOWSHIP MEETING, Speaker TBA Sinclair Lewis Room

CONCURRENT SESSION I

Minnesota Room

9:00-9:30	Van Cline , Manager/Customer Education, Toro, Inc.: "Superintendent of the '90s"
9:30-10:15	Joseph Baidy , CGCS, Acacia CC, Vice Chairman, GCSAA Government Relations Committee: "Federal Laws and Regulations"
10:15-10:30	Break
10:00-5:00	Trade Show Opens Main Ballroom



PAUSING at the Superintendents' Championship held at Hazeltine August 13 are Dale Parske, left, and Scott Thorn of Lesco.

(Continued on Page 6)

1990 MGCSA Turf Conference

(Continued from Page 5)

- 10:30-11:15 **Dr. Richard Cooper**, University of Massachusetts:
"Pesticide Toxicity"
- 11:15-12:00 **Dr. Tom Watschke**, Penn State University:
"Water Quality"
- 12:00-1:00 Lunch
- 1:00-2:00 **James Latham**, USGA Greens Section
Director-Great Lakes "Turf Tips"
- 2:00-5:00 Trade Show
- 6:30 Board-Speaker Dinner
August Stuebner Room

Friday, November 30, 1990

- 7:30-9:00 Registration
- 7:30-8:30 Industrial Relations Meeting

CONCURRENT SESSION I

Main Ballroom

- 9:00-10:00 **Dr. Richard Cooper**, University of Massachusetts:
"Pesticide Movement in the Environment"
- 10:00-10:15 Break
- 10:15-11:15 **Dr. Tom Watschke**, Penn State University:
"Weed Control Strategies"
- 11:15-12:00 **Howard Kaewer**
"Poa Research"
- 12:00-1:00 Lunch

- 1:00-1:30 **John Barton**, Water Quality Manager,
Hennepin Park District:
"Hennepin County Project"
- 1:30-2:00 **Chris Hague**, CGCS, Hazeltine National GC:
"1991 U.S. Open Preparation"
- 2:00-3:00 Thinking Superintendent
TBA

EVENING BANQUET

Minnesota Room

- 6:00-7:00 Cash Bar and Appetizers
- 7:00-9:00 Dinner and Awards
- 9:00-10:00 Entertainment—Alex Cole, Comedian

**Registration
Forms
For The 1991
Turf Conference
Will Be Mailed
In Late September**

TREE TRANSPLANTING

**OWNED AND OPERATED BY A FORMER
GOLF COURSE SUPERINTENDENT WHO
CAN RECOGNIZE THE GOLF COURSE
SUPERINTENDENTS' NEEDS.**



OFFERING:

- * Experience in Transplanting & Assistance in Tree Placement.
- * The Capacity to move Large Trees.
- * FREE consultations and estimates.
- * Golf Course Budget Rates on jobs Big or Small.

Call: **Kevin Shockman**

Evenings: 612/942-6234 Days: 612/941-9038

GOLF COURSE TREE MOVERS

7300 Bristol Village Drive #338
Bloomington, MN 55438

Thompson Commander Series Brass Rotor

For over 80 years Thompson gear driven rotors have been operating on golf courses and commercial projects around the world. Long recognized as the world's finest, these units will make you forget there is such a thing as sprinkler maintenance.



Thompson Golf

- Valve-in-head electric or hydraulic
- Water efficient. Near perfect CU requires less run time per station.
- Pressure can be regulated from the top while reading the gauge mounted on the top of the sprinkler
- 7 year (non-prorated) warranty

Distributed
by

**LANDSCAPING & SUPPLIES
GROWERS OF CULTURED SOD
IRRIGATION DISTRIBUTION
SALES - SERVICE - DESIGN**



MOGREN BROS.

2582 White Bear Avenue
St. Paul, Minnesota 55109
(612) 777-2734

If These Nationals Climbed Hills any Better They'd Have Four Legs, Two Horns & Live in the Rockies!



See for yourself why there's nothing as nimble on any turf as a National Triplex. Call today for a FREE video.

(612) 646-4079

"FACTORY AUTHORIZED DEALER"

CUSHMAN MOTOR CO., INC.

2909 EAST FRANKLIN AVE.

MINNEAPOLIS, MN 55406

PHONE: (612) 333-3487 • FAX: (612) 333-5903



NATIONAL MOWER COMPANY

SINCE 1919

700 Raymond Avenue
St Paul, Minnesota 55114

FAX (612) 646-2887



TORO

For years,
the Greensmaster® 3000
has been delivering a precise,
uniform height of cut for superb
appearance
and playing
characteristics.

- Greens Cutting Units
- Tee Cutting Units
- Tournament Cutting Units

Greensmasters offer all these options:

- Grooming Reels
- Backlapping
- Variable Speed
- Quick Height of Cut
- Thatchers
- Spikers

Now you
can get that same
quality of cut
in a Diesel Model,
the Greensmaster® 3000-D.



Service With a World of Difference. From Your Full Service Toro Distributor.

These riding Greensmaster® 3000's are designed with their cutting units isolated from both the traction unit and the grass baskets. This unique design feature allows for evenly cut greens. No matter what your height of cut requirements are, either Greensmaster®, Gas or Diesel, will give you cutting adjustments from as low as 3/32" up to 11/16". Just what you need to cut your greens to tournament standards and deliver a precision cut to aprons, tees or fairways.

MTI DISTRIBUTING CO. **TORO**

14900 Twenty-first Avenue North • Plymouth, Minnesota 55441 • Phone (612) 475-2200

New Golf Course Marketing Research Reports Introduced

The Center for Golf Course Management (CGCM), a subsidiary of the Golf Course Superintendents Association of America (GCSAA), recently introduced the first edition of its marketing research report, *Buying Habits of Golf Course Superintendents*.

The primary purpose of the *Buying Habits* report is to assist golf course/turfgrass manufacturers with the establishment of their marketing strategies. The report, which will be published annually in August, includes information such as course demographics, purchasing behaviors, equipment inventories, expenditures, customer satisfaction, planned course improvements and more.

The report was compiled from the results of surveys mailed to more than 11,000 golf course superintendents, both GCSAA members and non-members. Analyses and cross-tabulations of the information were conducted by CGCM's Marketing Research Division.

The *Buying Habits* report is available through CGCM for \$945. With each report purchased by October 1, 1990, a second marketing research tool, the *Maintenance Trends Report*, will be provided free. After October 1, this report will be available for \$100.

The *Maintenance Trends Report* is a study of current and emerging golf course management practices based on the results of a survey sent to 1,200 certified golf course superintendents. This year's report features deep-tine aerification, Poa annua con-

trol, lightweight fairway mowing, 72-inch rotary mowers for maintaining roughs and computers in golf course management.

In addition to these two reports, the CGCM Marketing Research Division provides other services to meet the specific needs of golf course industry manufacturers, including custom analysis of the *Buying Habits* report data and the collection of proprietary information for individual companies.

For further information on these reports or other services, please contact the CGCM Marketing Research Division at 800/472-7878 or 913/841-2240.

MEMBERSHIP REPORT

NEW MEMBERS—AUGUST 15, 1990

Name	Class	Club
Thomas Parent	A	River Oaks Golf Club
Cyril Flem	A	Rolling Hills
Gregg Knudson	D	Interlachen CC
Ross Mathiesen	C	U of MN - Waseca
Eric Hodgson	C	Perham Lakes
John Betchwars	D	Hazeltine Natl.
Steve Aunan	F	David Fike Co.

RECLASSIFICATION

Name	Class	Club
Jay Gustafson	C-BII	Nemadji
Keith Greeninger	BII-B	Woodhill
John Almlie	C-BII	Rich Springs
Harley Flor	BII-A	Kate Haven

Greg Hubbard, Membership Chairman

AERATION TIME IS UPON US — TRY COREMASTER ON YOUR TRACTOR FOR ALL YOUR TURF AERATION NEEDS



SPECIFICATIONS

CORING SWATHE 49" (1240 mm approx.)

CORING DEPTH 0—3¾ (95mm approx.)

DIMENSIONS OVERALL

Height 21" (530mm approx.)

Width 55" (1400mm approx.)

Depth 21" (530mm approx.)

WEIGHT 900 lbs. (400kg approx.)

TRACTOR SIZE

15—60 H.P. with standard 3 point linkage and category 1 P.T.O. drive shaft.

TINE SIZES

Quadra 1/4", 3/8", 1/2" and 5/8", (6mm, 10mm, 13mm and 16mm)

OPERATING SPEED

Variable up to 30,000 sq. ft. per hr. (2,800m²) subject to pattern selected.

AERATION PATTERNS

Variable 1", 2" and 4" centers laterally—1" to 5" centers longitudinally. (25, 50, & 100mm centers laterally X 25 & 125mm centers longitudinally)

POLFUS IMPLEMENT, INC.

RT. #3 BOX 63, New Richmond, WI 54017
Hastings, MN, Stillwater (Park Nursery)
715-246-6565 612-439-6776



**LEADERSHIP
AT WORK®**

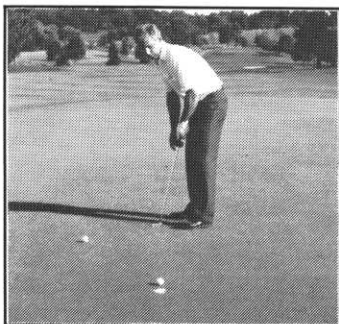
CALL FOR A DEMO TODAY

John Katterheinrich Wins Superintendents' Tourney

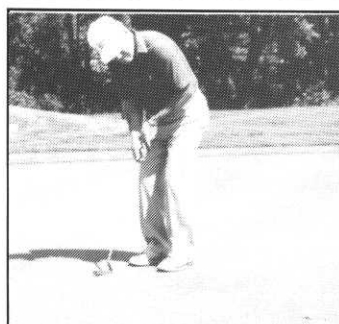
John Katterheinrich, who took over the head golf course superintendent's position at Interlachen Country Club in Edina earlier this year, has established himself as a competent golfer, too.

In his first venture into the Minnesota Golf Course Superintendents' Championship, held this year at Hazeltine National Golf Club in Chaska on August 13, Katterheinrich walked off with top honors with his 39-41—80, three strokes ahead of Randy Nelson, Owatonna Country Club.

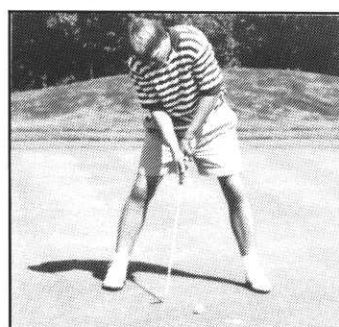
Hazeltine Demands Practice



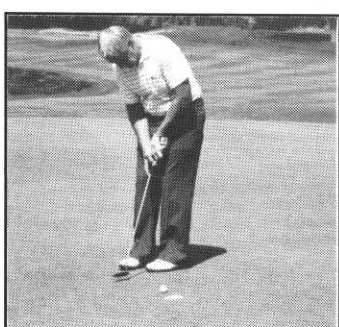
John Granholt, Eau Claire



Jerry McCann, Daytona



Tom Mundy, Easy Go



Bill Johnson, Edina

Beautify Your Landscape

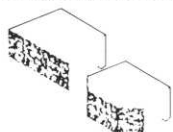
The distinctive Diamond Retaining Wall System opens a world of opportunities to enhance the beauty of your landscape.

ENGINEERED.

A Diamond Wall is easy to construct — no pins, mortar, or footings required.

DESIGNED.

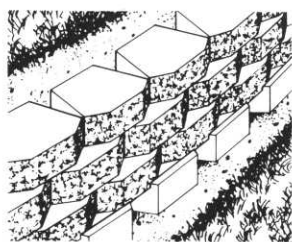
Diamond blocks are available in two unique and attractive designs — straight and beveled.



Both designs feature a full rock-face and warm earth-tone colors that blend beautifully with any landscape. Custom colors are available.

SOUND VALUE.

High-quality concrete makes a Diamond Wall structurally sound, long lasting, and maintenance-free.



Diamond

Wall System

Distributed by:

MOGREN BROS.
LANDSCAPING & SUPPLIES
GROWERS OF CULTURED SO2

IRRIGATION DISTRIBUTION
SALES • SERVICE • DESIGN
2602 White Bear Avenue
St. Paul, Minnesota 55109
(612) 777-2734

Defending champion Paul Mayes, Brackett's Crossing, who captured the crown last year at Edina Country Club, had a bit more difficulty this year mastering the site of the 1991 U.S. Open. He finished with a 90.

Third place honors in the Championship Flight went to Shane Andrews of Monticello Country Club, who shot an 84, one stroke ahead of Lester Reiff, Lost Spur Country Club. Tied for fifth with 86s were Monty Swift, Fox Lake Golf Club, and John Varty, Elk River Country Club.

The senior winner was George Gibbons, Jackson Golf Club, who posted a 45-42—87, one stroke ahead of Russ Adams, University of Minnesota.

In the Handicap Flight, Steve Busch of Long Lake Ford Tractor, took top honors with a 37-44—81, three strokes in front of John Betchwars, Hazeltine.

Howard Brandt, H & J Marketing, Inc., won the Callaway Flight with a 43-38—81.

CHAMPIONSHIP FLIGHT

John Katterheinrich, Interlachen C.C.	39-41—80
Randy Nelson, Owatonna, C.C.	43-40—83
Shane Andrews, Monticello C.C.	45-39—84
Lester Rieff, Lost Spur C.C.	41-44—85
Monty Swift, Fox Lake G.C.	44-42—86
John Varty, Elk River C.C.	42-44—86
Paul Mayes, Brackett's Crossing (Defending Champ.)	46-44—90

SENIORS

George Gibbons, Jackson G.C.	45-42—87
Russ Adams, Les Bolstad G.C.	43-45—88
Bill Johnson, Edina C.C.	42-48—90
John Beyer, Paul Bunyan G.C.	44-47—91

HANDICAP FLIGHT

Steve Busch, Long Lake Ford Tractor	37-44—81
John Betchwars, Hazeltine National G.C.	42-42—84
Carey Femrite, Pebble Creek G.C.	43-43—86
Greg Hubbard, Manitou Ridge G.C.	43-44—87
Tom Mundy, E-Z-GO Textron	42-45—87
Duane Slaughter, Hazeltine National G.C.	42-45—87
Tom McCann, Landscape & Turf	45-44—89
Scott Hoffman, Madden Inn G.C.	48-43—91
Cyril Flem, Rolling Hills G.C.	46-45—91
Jerry McCann, Daytona G.C.	46-45—91
Bill Stromberg, Southview C.C.	44-48—92
Joe Buege, Pebble Creek G.C.	45-48—93
George Peterson, Pebble Creek G.C.	47-46—93
Jim Hove, Woodhill C.C.	44-49—93
Steve Hagen	48-45—93
Brian Evanson, Birchwood G.C.	45-48—93

CALLAWAY FLIGHT

Howard Brandt, H&J Marketing, Inc.	43-38—81
Bill Neuman	45-44—89
Wade West, Rich Acres G.C.	46-45—91
Scott Thorme	46-46—92
Cal Schmidt, Greenscape	45-51—96
Mike Redman, Scott's Pro Turf	52-44—96
Marcin Murphy, Minikahda Club	52-45—97
Kevin Schmidt, Lafayette Club	49-48—97
Arvid Nevs	48-48—96