

*Minnesota Golf Course Superintendents' Association*

**HOLE**



**NOTES**

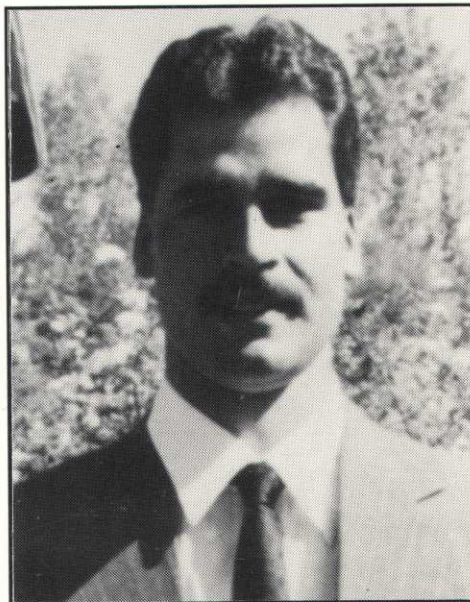
AFFILIATED WITH GOLF COURSE SUPERINTENDENTS ASSN. OF AMERICA

VOL. 19, NO. 8

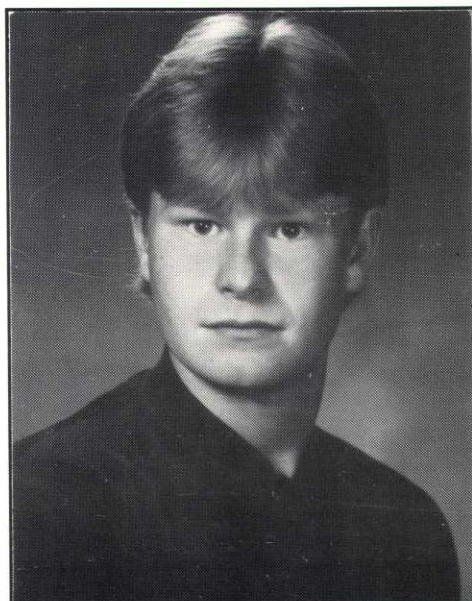
OCTOBER 1990



**Harvey Klitzke**  
Eden Prairie



**Chris Leach**  
Glyndon



**Michael Nelson**  
St. Paul



**Three Anoka Tech Students Receive Scholarships**  
*(See Story on Page 8)*