

THE CROWNING TOUCH

CROWN SERIES: Formulation blended for the Upper Midwest.
Choose the following Crown Series of turf formulations that meets your needs.

COACH'S FORMULA FOR ATHLETIC FIELDS

- "Wear tested" elite Kentucky Bluegrasses and Turf Perennial Ryegrasses.
- Developed with the turf superintendent's requirements in mind.
- Recommended for athletic complexes, playfields, stadiums, high traffic areas around golf course fairways, tees, shopping centers, picnic areas, and parks.

ELITE LANDSCAPE FORMULA

- Meeting today's demands for a low maintenance quality turf with a balanced combination of Kentucky Bluegrass, fine Fescue, and Perennial Ryegrass.
- For new lawns and damaged turf around homes, parks, playgrounds, cemeteries, commercial and government buildings.

SHADE PREMIUM FORMULA

- Shade tolerant balanced combination of fine Fescues and Kentucky Bluegrasses that tolerate shade and are able to tolerate shade diseases and maintain an attractive turf.
- Ten percent Ryegrass provides quick cover.

SOD GROWERS PREMIUM FORMULA

- Top quality Kentucky Bluegrasses combined to produce a premium sod.
- At harvest, the turf is attractive, dense, and yet tough, producing a liftable sod.

TURF RENEWAL FORMULA

- Designed to redevelop vigor and beauty of old turf by introducing modern day grasses. This formulation produces fast erosion-resistant cover and helps with "on-time" fulfillment of contracts.

TURF PRIDE FORMULA

- Developed to produce a "turf proud" lawn which will maintain its premium quality for many years with moderate care.
- Recommended for home lawns, condominiums, important commercial and government buildings that require high quality turf with moderate to full management programs.

Crown Series Turfgrass formulas are distributed in the Upper Midwest by Brayton Wilbur-Ellis.

BRAYTON
CHEMICALS, INC.

- Micronutrients
- Seed Protectants

- Turf Chemicals
- Aquatic Chemicals

Wilbur-Ellis

LET THESE LOCATIONS SERVE YOU

1-800-642-2736


VAN DER HAVE OREGON, INC.

Wilbur-Ellis

Ideas to grow with



BRAYTON

Chemicals Division

The Wilbur Ellis Co. is proud to share our IDEAS TO GROW WITH!

- Fast FREE Delivery within 24 hours of your call
- Computer generated price information & product information
- Contracted distributor for all MAJOR Turf Products
- Professional Turf Sales Representatives committed to **SERVICING YOUR NEEDS**
- EPA regulatory assistance - MSDS, EMERGENCY RESPONSE PLANS
- Electronic Partnership - computer software linking us to our customers
- Soil & Water Testing Harris Labs
- Member of local and national Golf Course Superintendents Association

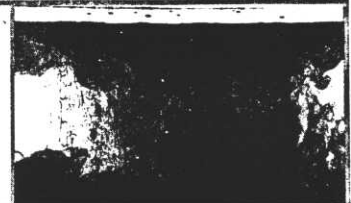
Combining experience and modern techniques in equipment & facilities we have built our business by giving our customers IDEAS TO GROW WITH and the service to meet their needs.

For more information, contact . . .

Joe Wollner • Wisconsin & Northern Illinois • 800-747-7400

John C. Meyer • Central Illinois • 800-892-4033

Larry Thornton • Minnesota • 800-642-2736



NOW! Turf Mark® Blue Spray Pattern Indicator Is Available In Convenient Water Soluble Packets!

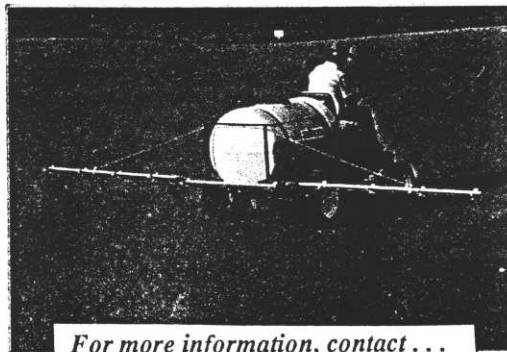
Turf Mark® . . . the professional's way to apply liquid pesticides and fertilizers. Turf Mark shows you *exactly* where you've sprayed. The distinctive blue color helps to eliminate skips and overlaps, saving you time and money.

Now, Turf Mark is available in convenient, water soluble packets. Turf Mark WSP is a dry flowable formulation of liquid Turf Mark. It is the most convenient and easy-to-use blue spray pattern indicator available. Turf Mark WSP dis-

solves quickly and completely in the spray tank, leaving no residue to clog screens or nozzles. With

Turf Mark WSP, you virtually eliminate applicator contact, container disposal, mixing and handling problems. It is completely compatible with liquid pesticides and fertilizers. And, it cleans up easily from equipment.

For more information on Turf Mark WSP or other Becker-Underwood products, contact your distributor. Or, call us today toll-free!



For more information, contact . . .

Larry Thornton
17525 Lorence Way
Eden Prairie, MN 55346
612-934-4647

TURF MARK

Information, Please—

(Continued from Page 10)

dence in any statement we make to Mr. and Mrs. Golfer or anyone else.

In addition to information gathering, a manual will be developed by USGA and GCSAA staffs to provide consistent information on integrated turfgrass management practices that ensure environmental quality, to be updated as field-tested research results become available. The program is not meant to cast doubt on recent research efforts, but rather to expand the scope of research and involve all areas of the country.

Meantime, how are we to cope with accumulated grass clippings, tree trimmings and the like? Will manure spreaders (for clipping dispersal in roughs) become standard equipment on golf courses?

Now that mudholes and swamps have been upgraded to protected wetlands, what shall we call the mosquitos?

We will need more and more information to stay current with questions already asked and those which are to come. It comes from research programs on state, regional *and* national levels which must be supported by *all* individuals in golf as well as organizations.

Local-level research is necessary to help us cope with problems unique to specific areas as well as those which can be useful to a general audience. These programs need and deserve the support of golf and golf course superintendents' associations within their sphere of influence. National level funding is more difficult, since we expect some sugar daddy to kick in enough for all of us. Perhaps this is the time for everyone to become involved on a more personal basis.

The USGA Associates Program is a way to support this research as well as other programs benefiting golf. Membership is affordable to anyone, beginning at only \$25. The Associates are for everyone in golf, superintendents, agronomists, sales people and researchers as well as golfers. After all, our livelihood depends on the viability of golf as an industry. The alternative is akin to those "good ole days" of weed pickers in bib overalls or something equally depressing.

Beautify Your Landscape

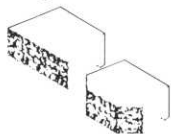
The distinctive Diamond Retaining Wall System opens a world of opportunities to enhance the beauty of your landscape.

ENGINEERED.

A Diamond Wall is easy to construct — no pins, mortar, or footings required.

DESIGNED.

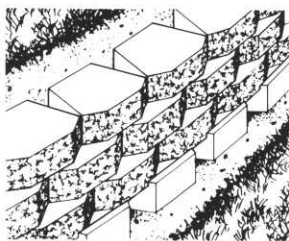
Diamond blocks are available in two unique and attractive designs — straight and beveled.



Both designs feature a full rock-face and warm earth-tone colors that blend beautifully with any landscape. Custom colors are available.

SOUND VALUE.

High-quality concrete makes a Diamond Wall structurally sound, long lasting, and maintenance-free.



Diamond
Wall System

Distributed by:

MOGREN BROS.
LANDSCAPING & SUPPLIES
GROWERS OF CULTURED SOO
IRRIGATION DISTRIBUTION
SALES • SERVICE • DESIGN
2582 White Bear Avenue
St. Paul, Minnesota 55109
(612) 777-2734



Research Committee inspects Disease Detector at Baker Park Golf Course.

It Takes A Good Club To Get on The Green

But when you're on the green you'll want a

TORO GREENSMASTER 3000

To give your green the kindest cut of all



Call us today and find out why it makes good sense to

LEASE IT ...

For precise, uniform height of cut, for superb appearance and playing characteristics lease a TORO GREENSMASTER 3000

MTI
DISTRIBUTING CO.

TORO

14900 Twenty-first Avenue North • Plymouth, Minnesota 55441
(612) 475-2200 • 1 • 800 • 362 • 3665

Sometimes Water Can Be a Problem...

Unless you let TORO Irrigation
Systems work for you.

We will custom design a complete system
to fit your irrigation objectives. Our full
time, experienced staff answers all of your
irrigation questions

We want you to get a head.

A TORO Low-Pressure Sprinkler Head



THREE MONEY SAVING TIPS...

1. Use Toro Low
Pressure Heads to
save energy and
dollars.

2. Ask your power
company for
off-peak electric
rates for
irrigation.

3. Don't buy an
irrigation system...
LEASE IT... Ask us
why it makes sense.

LEASE IT ...



14900 Twenty-first Avenue North • Plymouth, Minnesota 55441
(612) 475 - 2200 - 1 • 800 • 362 • 3665

DISTRIBUTING CO.

TORO

CLASSIFIED ADVERTISEMENTS

WANTED

Toro Groundmaster 72
poor to fair condition
for winter project
please call 831-0052

- FOR SALE -

Tractor/SatoH
S-650G
1975 25 Horse Power
1300 hours
- plus -
Allied 250 Loader
Call Scott or Bob
at New Prague Golf Club

WANTED

One hand walking
greens mower for
back up.
Contact John Harris
Lafayette C.C.
(612) 471-8493

Lilacs Have Some Problems

By Cynthia Ash
Assistant Extension Plant Pathologist
Minnesota Extension Service

Bacterial blight hit lilacs, especially white-flowered varieties, this spring with the cool wet conditions in May and could continue to spread under similar conditions. The blight resembles fireblight. Young succulent leaves and stems turn black and shrivel. Young shoots may be marked by a black strip or cankered (dead) areas.

Destroy diseased shoots by pruning with sterilized shears. Shears can be sterilized by dipping them for two seconds in a 10% bleach solution (nine parts water to one part household bleach) between cuts. Application of a copper fungicide as soon as the disease is detected has been found helpful. Copper fungicides can cause some leaf burn under certain conditions. Check the label for precautions. Avoid excessive fertilizer application including manure, and water only at the base of the plant. Thin older bushes to increase air circulation.

Powdery mildew is a common fungal disease on many plants including lilacs. A white to gray powdery fungal growth can be seen on the surface and/or bottom of the leaf. The disease seldom causes severe damage and can be kept at a minimum with pruning, and watering only at the base. During seasons when rainfall is plentiful and the humidity remains high, mildew will be more abundant and a fungicide such as sulfur or benomyl (Benlate) could be used to prevent new infections.



New Publication

“Planting and Transplanting Trees and Shrubs” (AG-FO-3825) is a new publication which replaces Planting Landscape Trees (AG-FO-0692). This publication should be available from the Minnesota Extension Service's Distribution Center or your local county extension office.

Verticillium Wilt Linked To Shade Trees Death

By Cynthia Ash
Assistant Extension Plant Pathologist
Minnesota Extension Service

Verticillium wilt is a fungal disease which interferes with the water conducting system in many shade trees including ash, maple, catalpa, cherry lilac and Russian olive.

The fungus is present in the soil and enters the plant through roots. Verticillium wilt has acute and chronic phases. Acute symptoms include curling, dying, or abnormal red or yellow color leaf color, defoliation, wilting, dieback and sudden death of individual branches or entire trees. Trees or portions of trees may display these symptoms one year and appear healthy the next.

Chronic symptoms which may appear on certain limbs or the entire tree and include slow growth, sparse foliage, stunted leaves and twigs, leaf scorch, abnormally heavy seed crops and dieback.

The presence of the fungus in the xylem (water conducting tissues) results in a greenish to gray-brown discoloration of the xylem. This streaking may appear in the part of the tree displaying the acute or chronic symptoms but is more likely to be found farther down the tree in the trunk or larger limbs which support the symptomatic branches.

The severity of the infection is increased by adverse environmental conditions including water stress, high salt levels in the soil, transplant stress, poor soils and nutrient deficiencies. Care should be taken to alleviate or prevent these conditions. Trees resistant or immune to verticillium wilt should be used to replace trees lost to disease. Examples include ginkgo, juniper, larch, pine, spruce, apple, crabapple, mountain ash, birch, hackberry, hawthorn, linden, honeylocust, oak and poplar.

More information is available in a Minnesota Extension Service fact sheet, AG-FS-1164 entitled, *Verticillium Wilt of Trees and Shrubs*.

MEMBERSHIP REPORT

NEW MEMBERS—MAY 4, 1990

Lyle Kleven	Class	A	Viking Meadow GC
Todd Maistrovich		BII	Brightwood Hills
Pat Mogren		D	Oak Glen CC
Paul Swift		B	Fox Lake
Scott Thorne		F	Lesco, Inc.
Charles Tuthill		D	Elk River CC

RECLASSIFICATION

Michael Brual	B-D	Hazeltine
James Lockway	B-A	Phalen GC
Michael Ramerth	C-BII	Shoreland CC
Bob Shields	AAA	Lake Miltona

Greg Hubbard, Membership Chairman

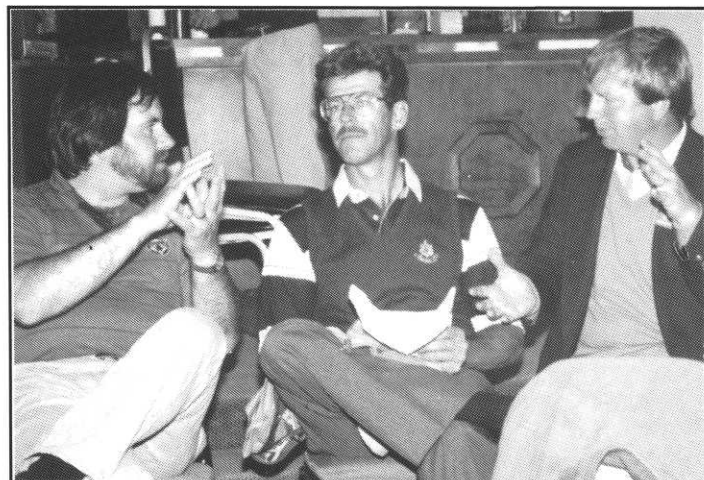
Dale Wysocki's Camera at Stone Brooke



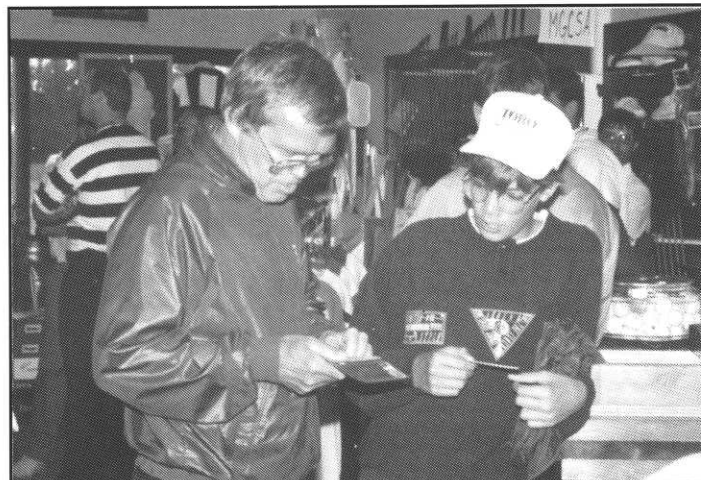
Stone Brooke's Clubhouse.



SWINGING AWAY is Charlie Pooch, University of Minnesota Golf Club. Watching is Sean McDonagh, Roseville Golf Course.



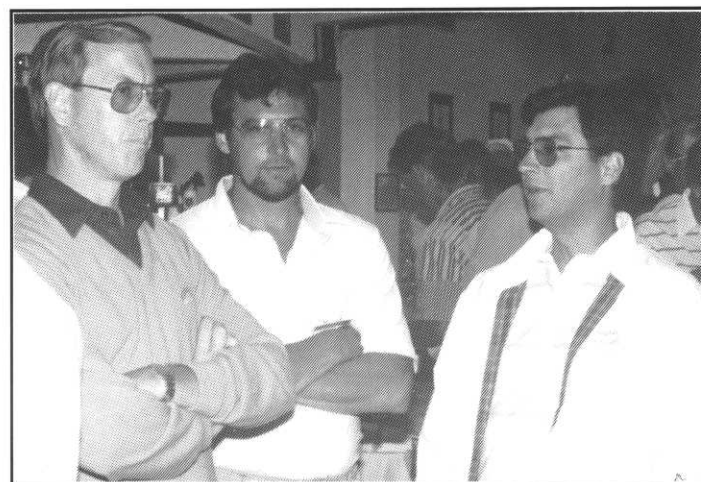
CHATTING are, from left, Chris Hague CGCS, Hazeltine; Randy Nelson CGCS, Owatonna Country Club, and Paul Mayes, Brackett's Crossing.



COMPARING SCORECARDS are Jim Lindblad, left, Wayzata Country Club, and Alex Sogg.



POWERING ONE off the tee is Duane Slaughter of the host Stone Brooke Club.



DEEP IN DISCUSSION are, from left, Doug Mahal CGCS, Minikahda Club; Bob Adams, New Prague, and Larry Thornton, Brayton Chemical.

Come Discover The Northland Inn Difference.

Living. Learning. & Luxury!

Discover the ultimate combination of business and pleasure. Two hundred thirty-one luxurious suites. A dramatic eight-story atrium. Superlative dining in Wadsworth's, our contemporary American chophouse.



Or America's Harvest, featuring fresh regional cuisine from the Heartland. An indoor heated lap pool. All this, plus gracious personal service. This is living.

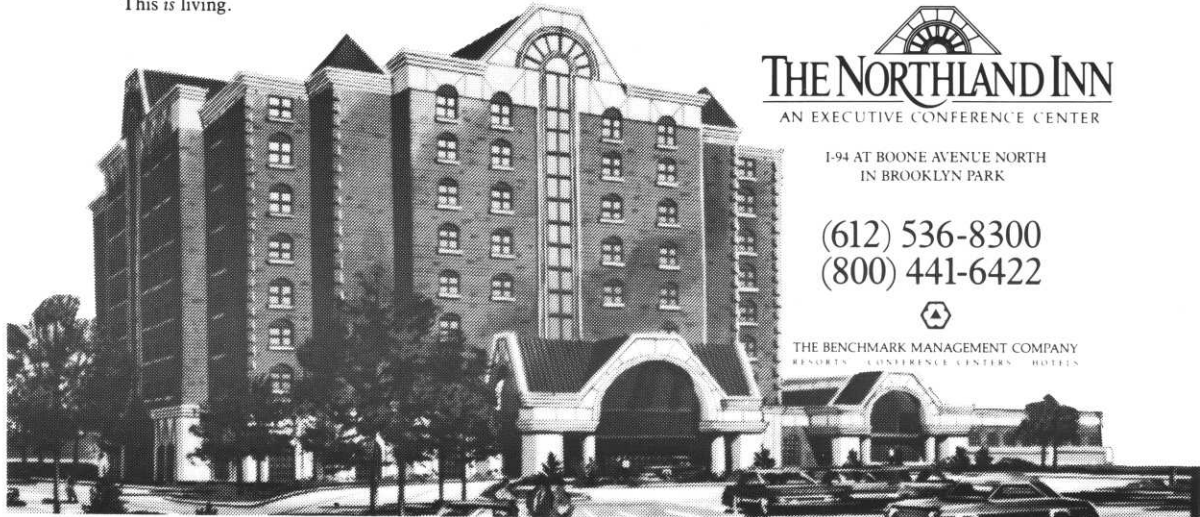


Discover a learning environment second to none. Our two-level 33,000 square foot conference center includes two column-free ballrooms, 138-seat amphitheater, and 27 private meeting rooms. All with 24-hour access, the most advanced AV technology available, and your own dedicated Conference Coordinator. Learning at The Northland Inn. Now it's a *pleasure*, too!

Things are as they should be at The Northland Inn, America's first all-suite conference center hotel, setting a new standard for luxury suite hospitality. Each highly-styled and richly furnished executive guest suite offers a whirlpool bath, two telephones, oversize beds, two TVs, personal refrigerator. All just 15 minutes from downtown Minneapolis; 30 minutes from Minneapolis St. Paul International Airport.



ALL IN ONE PLACE.
UNDER ONE ROOF.



THE NORTHLAND INN
AN EXECUTIVE CONFERENCE CENTER

1-94 AT BOONE AVENUE NORTH
IN BROOKLYN PARK

(612) 536-8300
(800) 441-6422



THE BENCHMARK MANAGEMENT COMPANY
RESORTS CONFERENCE CENTERS HOTELS

Turf Tourney Nets \$5,300 for MGCSA Research Projects

Kevin Huseth captained the winning team in the fourth annual MGCSA Turf Tourney conducted at 18 golf courses in the Twin Cities metropolitan area on June 15.

Huseth and his foursome of Bill Laooo, Rich Rossini and Mike Esch posted 99 points at Dellwood Hills to capture top honors. Each player was awarded \$100 in prizes.

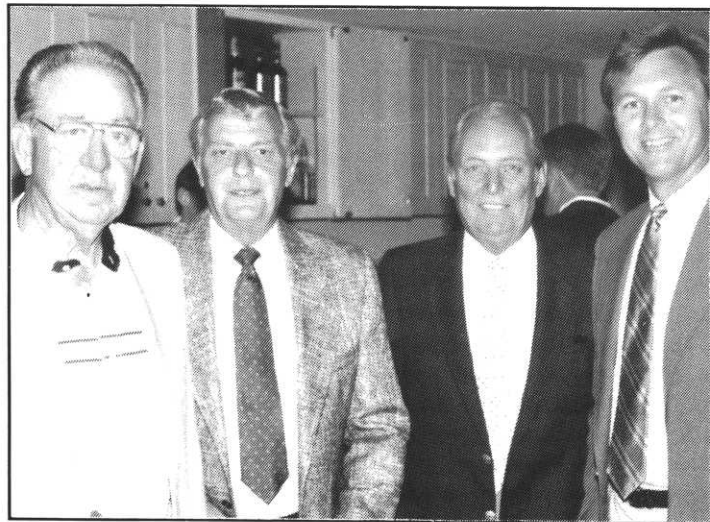
Tied for second with 95 points were teams captained by Steve Garske and Bill Preibe. Garske played with Bob Gerding, Curtis Cargill and Bob Kroiss at Oak Ridge Country Club, where the banquet and award ceremony was held. Each player received \$75 in prizes.

Preibe led the team of Paul Thompson, Mike Duffey and Jim Beyl at North Oaks Country Club. They received \$70 apiece, with that tie and all others being settled with a scorecard playoff.

"The tournament had 33 teams and netted approximately \$5,300 in proceeds," said chairman Tom Fischer, superintendent at Edinburgh USA and vice-president of the MGCSA.



CONGRATULATING KEVIN HUSETH, right, captain of the Turf Tourney's winning team, is MGCSA President Kerry Glader.



RUNNER-UP TEAM in the Turf Tourney included these players. From left are Bob Kroiss, Bob Gerding, Curtis Cargill and Captain Steve Garske.



ACCEPTING THANKS for running a successful tournament from MGCSA President Kerry Glader, left, is Turf Tourney Chairman Tom Fischer.

MCGSA Turf Tourney

		Pts.	Played At
1st Place	Kevin Huseth (Capt.) Bill Laooo Rich Rossini Mike Esch	99	Dellwood
\$100 each			
2nd Place	Steve Garske (Capt.) Bob Gerding Curtis Cargill Bob Kroiss	95	Oak Ridge
\$75 each			
3rd Place	Bill Preibe (Capt.) Paul Thompson Mike Duffey Jim Beyl	95	North Oaks
\$70 each			
4th Place	Gary Weikle (Capt.) Bob Weikle Les Froya Jerry Bergstrom	93	Minn. Valley
\$65 each			
5th Place	Craig Hoff (Capt.) David Khoock Bob Anderson Jeff Dobbs	93	Minikahda
\$60 each			
6th Place	Mark Bongard (Capt.) Bill Anderson Mike Vogt David Metz	92	Golden Valley
\$50 each			
7th Place	Dave Obee (Capt.) Rick Haley Jerry Porter Greg Hall	92	Hazeltine
\$45 each			
8th Place	Dave Wilson (Capt.) Tom Sutton Robert Spinharvey Mike Nelson	91	Hazeltine
\$35 each			

Ties settled via a scorecard play-off.



OUR STUDENTS CAN PROTECT YOUR TURF

Take a look at our new career programs. The Minnesota Technical College System has just introduced 3 new programs developed by industry experts. These new programs offer industry designed courses which satisfy the needs of students and practicing professionals.

**Make one of these
your partner next fall.**

- Turf and Landscape Irrigation
- Golf Facilities Management
- Golf Course and Grounds Management

Classes Start Sept. 4

Call or write us to find out
how we can protect your turf:



Anoka Technical College
1355 West Highway 10
Anoka, MN 55303
(612)427-1880

Good Fertilizer Doesn't Cost. It Pays!



It's time to get the best for your money.

- Par Ex is the only professional fertilizer line containing IBDU, undisputedly the finest slow release Nitrogen source in the world.
- IBDU gives you the highest level of WIN, or Water Insoluble Nitrogen.
- IBDU delivers all of its Nitrogen in a single growing season.
- Slower release makes Par Ex products perfect for your Fall Fertilization program.
- Fewer applications are required, labor costs are cut.
- The Nitrogen release rate of IBDU is generally affected by only two factors: soil moisture and granule size.
- The salt index of IBDU is the lowest of all commonly used fertilizer materials.
- IBDU fights nitrate pollution because very little Nitrogen is lost through leaching or volatilization.

TURF SUPPLY COMPANY

2970 Dodd Road, St. Paul, MN 55121 • 454-3106

PROGRASS®



Your First Choice, Top Choice
for Control of Poa annua and other
Annual Grasses and Broadleaf Weeds



Apply in the fall for Poa annua-free
turf the following growing season in . . .

- Perennial ryegrass
- Kentucky bluegrass
- Fairway-maintained bentgrass

ECONOMICAL - EFFECTIVE

PROGRASS® is a registered trademark of NOR-AM Chemical Co.

TURF SUPPLY CO.,

2970 Dodd Road, St. Paul, MN 55121 • 454-3106