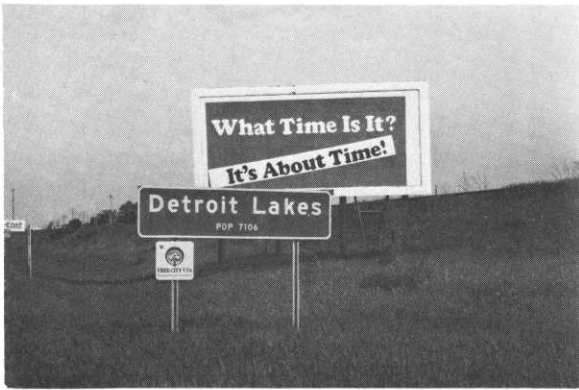


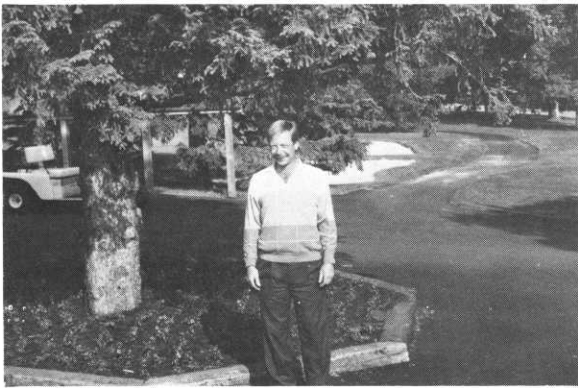
A VISIT TO DETROIT LAKES



It's about time . . . we got to Detroit Lakes.



The featured speaker was Dr. John French who spoke on Fermenta.



Detroit Country Club Superintendent, Brad Klein, was a great host.



"Island Girl" was on Detroit Lake and was ridden by Krupp and French.



Dave Krupp of Turf Supply, Tom Dawson of Ransomes, and Steve Busch of Long Lake Ford supplied the industry insight for the day.



"Golf Keeps Minnesota Beautiful"

Minnesota Golf Course Superintendents' Association

AFFILIATED WITH THE GOLF COURSE SUPERINTENDENTS' ASSOCIATION OF AMERICA

OFFICERS

Keith Scott, President
Oak Ridge Country Club
700 Oak Ridge Road
Hopkins, Minnesota 55343

Kerry Glader, CGCS, Vice-President
St. Cloud Country Club
Box 1064
St. Cloud, Minnesota 56301

Richard Fredericksen, CGCS, Secretary
Rolling Green Country Club
400 Evergreen Road
Hamel, Minnesota 55340

Tom Fischer, CGCS, Treasurer
Edinburgh USA
5800 85th Avenue North
Brooklyn Park, Minnesota 55443
Phone: 612/424-8756

Scott Hoffmann, CGCS, Ex-Officio
Madden Inn and Golf Course
Brainerd, Minnesota 56401



WARREN J REBHOLZ
Executive Director
6550 York Avenue South
Suite 402
Edina, Minnesota 55435-2383
Phone: 612/927-4643

DIRECTORS

Kevin Clunis
Stillwater Country Club
Stillwater, Minnesota

Dan Hanson, CGCS
Minikahda Club
Minneapolis, Minnesota

Greg Hubbard, CGCS
Manitou Ridge Golf Club
White Bear Lake, Minnesota

William Johnson
Edina Country Club
Edina, Minnesota

Andrew Lindquist, CGCS
Brookview Golf Club
Golden Valley, Minnesota

Michael Netzel, CGCS
Northland Country Club
Duluth, Minnesota

Desert Horizons Country Club in Indian Wells, CA, is currently accepting applications for assistant superintendent.

Desert Horizons is an eighteen hole private club located in the southern California desert in the Palm Springs area. Tees and greens are 328 bermudagrass. Fairways and roughs are common bermudagrass. All turf areas are overseeded with perennial ryegrass for the winter season. The grounds crew consists of twenty and is unionized. The standard of maintenance is very high.

The assistant superintendent must be a well organized person dedicated to his/her profession and possess expertise in the following areas:

1. Recordkeeping
2. Calibration
3. Task prioritization
4. Crew scheduling and supervision

Compensation package is as follows:

1. Salary range \$22,000 - \$30,000
2. Vehicle provided
3. Major medical and dental provided
4. Employer funded Simplified Employee Pension Plan
5. Club paid dues and association expenses
6. Paid vacation
7. Noon lunch provided

Interested candidates should mail resumes to:

Desert Horizons Country Club
44-900 Desert Horizons Drive
Indian Wells, CA 92210
Attn: Mark Smith, CGCS

Work: (619) 340-1871
Home: (619) 345-4167

SERIOUS APPLICANTS ONLY PLEASE!!!!

MGCSA BOARD PROFILE



DAN HANSON

SPOUSE - Paula.

CHILDREN - Mark, age 3 1/2; and Mike, age 16 months.

CLUB AFFILIATION - Minikahda Club.

PAST EMPLOYMENT HISTORY - Superintendent, Minikahda Club, 1977 to present. Superintendent, Pierre Municipal Golf Club (Pierre S.D.), 1974 to 1976. Somerset Country Club, 1971 to 1973. St. Cloud Country Club, 1965 to 1970.

EDUCATION - A.S. in Turf Management, Penn State University. Three years in Business Administration, St. Cloud State University. High School, St. Cloud Technical H.S.

INTERESTS - Golf, Fishing, Traveling.

HONORS - Achieved certification status (CGCS).

COMMITTEE ASSIGNMENTS - Conference Committee Chairman, 1988 - 1989 and Scholarship Committee, 1989.

COMMITTEE GOALS - To provide Educational programs which represent the needs and desires of our membership. To provide a mix of information which is informative, interesting and somewhat unrepititious.

MGCSA GOALS - To contribute my time in any capacity needed.

PAST MGCSA POSITIONS - Arrangements Committee Chairman, 1986 - 1987.

CAREER GOALS - Continue to work as a golf course superintendent. Provide my membership with best possible playing conditions. Try to devote as much time as possible to my family.

WELL DRILLING FOR FOUR GENERATIONS

E. H. Renner & Sons

INCORPORATED

**SPECIALIZING IN MUNICIPAL WELLS
LINE-SHAFT TURBINES — SUBMERSIBLE PUMPS**

Roger Renner, President
Jerry Aljetes, Sales Engineer

(612) 427-6100

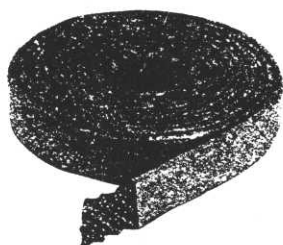
15688 Jarvis St. Elk River, MN. 55330



TREES
SHRUBS
GROUND
COVER
FLAT DRAIN



SUSTANE
ORGANIC
FERTILIZER



SCHUMACHER'S INC.

500 Malden Street
South St. Paul, MN 55075
(612) 451-1042 1-800-798-1042

Ask for Tom or Mark

SINCE 1940

GREEN CLIPPINGS

POTPOURRI

Over 60 people attended our June meeting at **Detroit Country Club** in Detroit Lakes . . . Closest to the pin contest was won by **Roger Tychsen**, a non-member who returned the prize. No one else was listed on the card so the dozen golf balls will be used at the next meeting. **Dale Walesheck** flexed his muscles and won the long drive contest . . . New **USGA** greens specifications are now available. Contact **Jim Latham** at **Great Lakes Region Greens Section** office (414/351-2203) or **USGA Golf House** in Far Hills, New Jersey . . . Look for a Safety Right-to-Know law to be introduced during the next legislative session. Would require employers to analyze equipment and machinery hazards in the work place. Firms would have to develop written procedures for each piece of equipment to inform employees of potential hazards. A bill was introduced at the last session mandating a 50% reduction in pesticide use over 5 years. This bill did not receive committee hearing. A sign of things to come . . . **Minnesota Department of Agriculture** will soon establish a waste pesticide collection program to collect waste pesticides from end users . . . Warm welcomes to **Ken Dehlikes** and **Scott Weltzin**, new class C members of **GCSAA** . . . Ditto to new student members, **David Reif** and **James Hove** . . . Congratulations to new **CGCS Bill Whitworth** of **Northfield Country Club**.

MEMBERSHIP UPDATE - ANDY LINDQUIST

The following new members have been approved by the MGCSA Board of Directors:

Dan Bartels (A), Rutgers Golf Club
Leroy Dauner (A), Hawley Golf & Country Club
Michael McDougall (BII), Monticello Country Club
Daniel Reynolds (BII), Detroit Lakes Country Club
Jon Almlie (C), Willmar Golf Course

Classification Changes:

Kevin Froemming (C), from Class B

Contact the MGCSA Office for an application for any co-workers or colleagues that may wish to join the MGCSA. Remember that you must also apply for classification changes. Contact Andy Lindquist or the Office for a change of classification card.

'ROUND THE REGION - Regional reports:

Southern Minnesota - Rick Smith, LeSueur C.C.

Jim Gardner is busy preparing **Rochester Golf & Country Club** for the **MGA Amateur Championship**, July 24-26. You may remember Rochester was the site of last year's **MGCSA's Golf Championship**. Not only was it extremely hot, but I think there are still some lost superintendents trying to find their way out of the woods. **LeSueur Country Club** hosted the **MWGA Women's Four-Ball Championship**, June 26-27. The women got to play the new 11th green for the championship, a 900 square foot, double tiered monster which was sodded last year.

Northern Minnesota - Mike Netzel, Northland C.C.

Dave Dahlberg, formerly of **Rum River Hills Golf Course**, has become the new superintendent at **Ridgeview Country Club** . . . Former Ridgeview superintendent, **Mike Davis**, moves to the new **Lutsen** golf course. Designed by **Don Herfort**, clearing and grubbing efforts are just beginning at this beautiful site. **Nemadji Country Club** is building another nine holes designed by **Roger Packard**. **Bob Distel**, formerly of Golden Valley, is the new superintendent at Nemadji.

Metro Area - John Harris, LaFayette C.C.

John visited Hazeltine National G.C. this month to see their new well and water system. His story is in this issue of Hole Notes.

Feel free to contact your regional reporters with information about your golf course which you would like to share with your fellow members.

ROSTER UPDATES

The MGCSA Office asks when you move or change jobs to send them an official notice so your records can be changed. Don't forget to include your new phone number.

SPACE TO FILL

If you have a topic or subject you would like to write about in the HOLE NOTES, contact Editorial Chairman, **Greg Hubbard**. Our publication is only as good as the members make it. Also, you will receive a small gift for your trouble and then all of the members will have your knowledge.

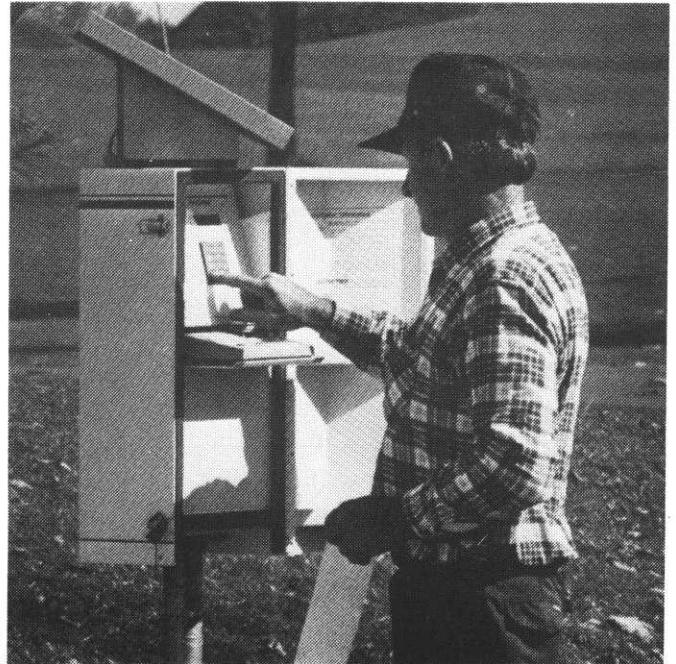
TURF SUPPLY COMPANY CAN FURNISH THE FOLLOWING SPECIALTY ITEMS

EnviroCaster™

The EnviroCaster can anticipate the onset of diseases, seedhead formation and insect hatch.

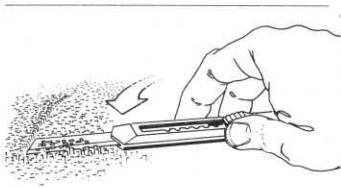
- It Can Save Your Golf Course!
- It Can Save Your Job!
- It Makes Decisions For You!

The EnviroCaster can save thousands of dollars by recommending NOT to spray.

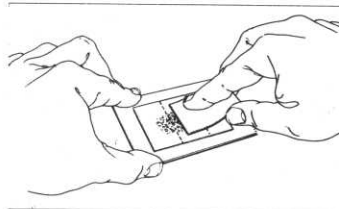


TURF DISEASE DETECTION KITS

Available for: Pythium Dollar Spot and Brown Patch



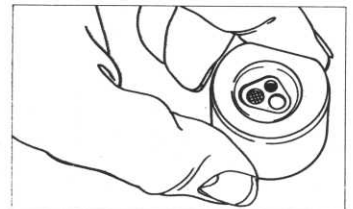
Collect turfgrass sample from areas with a history of disease, suspected disease, or distinct symptoms.



Prepare sample by grinding with the Extrak® Sample Prep Pad. Peel strips, fold, and place in bottle #1. Snap in filter tip.



Remove a disease detector from its pouch. Squeeze drops of test solutions onto the detector in sequence.



The small circle turns blue to indicate test is accurately completed. The left circle indicates whether the disease is present. Read disease level with AgriMeter II.™

TURF SUPPLY COMPANY

2970 Dodd Road • St. Paul, Minnesota 55121

(612) 454-3106