

USED EQUIPMENT HEADQUARTERS

★ FLEXIBLE TERMS AVAILABLE ★

(Credit Approved Accounts)

FALL 1985



PICTURED: "Reconditioned" Toro 7-gang hydraulic Parkmaster 15' cut.

MTI has many used, reconditioned and demo units available.

Don't miss this opportunity for big savings, plus MTI will taylor a finance plan to fit your cash flow!!

ITEMS AVAILABLE — • Sand Pro • Aerator • Vert-i-cut • Walk Greensmower • Sod Cutter • Gangs
• Reel Mowers • Trucksters • 70" Pro • Edgers • GM-3 • Tractors • Parkmasters • Top Dressers
• 3 Pt. Snowblowers • 81" Super Pro • Sweepers • Leaf Blower • Rotary Mowers • Fairway Mowers

MTI DISTRIBUTING CO.

TORO

14900 - 21st Avenue North • Plymouth, MN 55441 • 612-475-2200
Minnesota 800-362-3665 • Outstate 800-328-3558

HOLE NOTES

OFFICIAL PUBLICATION OF THE MINNESOTA
GOLF COURSE SUPERINTENDENTS' ASSOCIATION

EDITOR: WARREN J. REBHOLZ
6550 YORK AVENUE SOUTH
SUITE 402
EDINA, MINNESOTA 55435-2383
PHONE: 612/927-4643

ASSOCIATE EDITOR: GUY R. GREEN

EDITORIAL COMMITTEE CHAIRMAN:
FRED R. ANDERSON

M.G.C.S.A. BOARD OF DIRECTORS FOR 1985:

OFFICERS

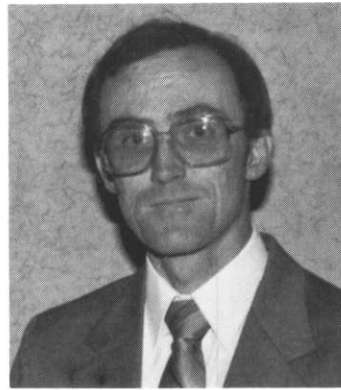
PRESIDENT.....DALE CALDWELL
VICE-PRESIDENT....KERRY GLADER
SECRETARY.....LYLE OLSON
TREASURER.....KEITH SCOTT
EX-OFFICIO.....DONAVAN LINDBLAD

DIRECTORS

FRED ANDERSON	DOUGLAS MAHAL
TOM FISCHER	RANDALL NELSON
SCOTT HOFFMAN	CHRIS HAGUE

THE FOLLOWING IS A LIST OF OFFICE
TELEPHONE NUMBERS FOR THE ENTIRE BOARD:

DALE CALDWELL.....612/544-4474
KERRY GLADER.....612/253-5250
LYLE OLSON.....612/464-3097
KEITH SCOTT.....612/938-6900
DON LINDBLAD.....612/755-2140
FRED ANDERSON.....612/689-3800
TOM FISCHER.....715/259-3926
CHRIS HAGUE.....612/448-3626
SCOTT HOFFMAN.....218/829-2811
DOUGLAS MAHAL.....612/929-1661
RANDALL NELSON.....507/451-4144



FROM THE PRESIDENT'S DESK

DALE CALDWELL

Seldom have I enjoyed anything as much as I did the day of September 9 at the Hazeltine National Golf Club. Chris Hague had his course in excellent condition. The height of the rough, the length of the course and the "U.S. Open pin placements" brought me, and many others, to our knees. The greens weren't as disasterous as I had imagined. However, I don't believe anyone in attendance really envies Chris' position and the big project which lies ahead this fall and next spring. Chris' greenschairman, Reed Mackenzie, gave a very interesting presentation as to what Toronto C-15 decline is all about.

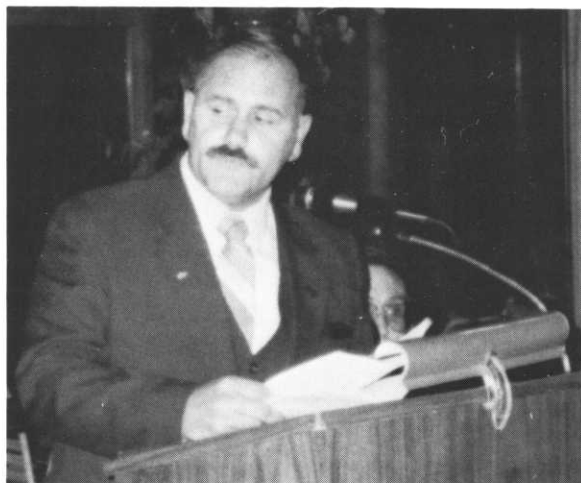
The real highlight of the event was the awards presentation and the honoring of Harold Stodola by our group. That man is absolutely incredible. Gerald Murphy did an outstanding job in regaling Harold's biography and achievements in golf course management. The beauty of the event lay in the attendance of sixteen members of Harold's family and friends. Some came from California and Arizona. Tears were glistening in the eyes of many and it was a very proud moment for MGCSA.

For those of you who were unable to attend, you missed a very memorable event and I, for one, was extremely pleased and proud to have been a part of this tribute to Harold Stodola.

FOR SALE

1982 Jacobsen F-10 w/10 Blade Reels,
Perkins Diesel w/1,246 Hours
\$18,000 For Information Contact:
Tom Fuller or Al Fitz
Town & Country Club 612/646-7125

TRIBUTE TO STODDIE



by GERALD MURPHY
Superintendent, Somerset Country Club

We have gathered here today for a number of good and important reasons. We are here for the fellowship, for a good game of golf. We are here to achieve a better education, to learn more about bacterial wilt and see its effects with our own eyes. But we are also here to demonstrate our support for this, the first Harold Stodola Research Tourney, and to honor the man for whom this tourney has been named.

Nothing could be more fitting than to name this tourney after the man who dedicated his entire life to the propagation and enhancement of the finest quality turf on earth so the masses could enjoy this game called golf in the most relaxing atmosphere on the most beautiful and tranquil spots in the world.

Some of you are very young and have only heard of the fame of this legendary fellow we fondly call "Stoddie".

Stoddie, born on August 12, 1903 didn't wait long to begin exploring a career in golf course management. In 1918 after several years of caddying at numerous local clubs he became the locker room boy at Oak Ridge Country Club. He moved quickly through the ranks of caddy master, night waterman and then assistant greenskeeper to one of the deans of greenskeeping at that time, Emil Picka. He worked with Emil at Oak Ridge from 1922 until 1926. During this period of time he continued his education at the University

of Minnesota Agronomy school where he also displayed his ability on the golf course by becoming the University of Minnesota golf champ of 1926.

In 1926 he left Oak Ridge to assume the responsibilities of greenskeeper at the Keller Golf Club where he stayed until 1942.

During these early years he began to distinguish himself, as not only a great greenskeeper, but as a man dedicated to his family and friends as well as to his profession. He was a clear thinker with great vision and an ability to speak his mind, even though it often differed from the majority. He did this with such concern for his profession and fellow greenskeepers that when he spoke, though young, his peers would listen attentively with much respect.

Several important things happened to this young man during this period of time. In 1930 he joined the Minnesota Greenskeepers Association and soon after that joined the National Greenskeepers Association. In 1932 he married his wife of 53 years, Ethel.

In 1933 he became a director of the National and, shortly thereafter, became editor of the official publication, "The Greenskeepers Reporter", a job he held until 1941. Of course, being active at the national level didn't keep him from fulfilling his obligation to Minnesota where he chaired every major committee and went through every office of the board including president.

A busy fellow, don't you think? Maybe that is why his nickname at the time was the "Hopkins Hurricane".

In 1940 Harold was elected Vice President of the National and, in 1941, he was nominated as a candidate for the presidency, running against the well known Mr. John Gray of the Essex Golf and Country Club.

And, at the age of 37, Harold became the tenth president of the National Greenskeepers Association, a post he held until 1945. He held the association together with the power of his pen through those trying years. Sure, it was team effort, but every team needs a leader and

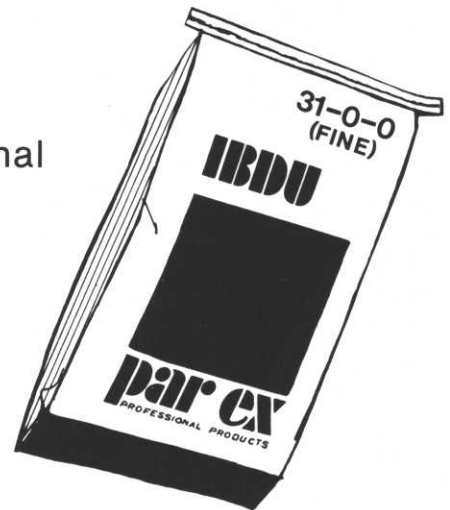
TURF SUPPLY COMPANY

**THE MOST COMPLETE LINE OF
TURF PRODUCTS FOR COMPLETE TURF
MANAGEMENT UNDER ONE COMPANY**



We formulate our products
to satisfy the regional nutritional
requirements of your turf.

**CALL
454-3106**



- EARLY ORDER DISCOUNTS
- EARLY DELIVERY DISCOUNTS
- QUANTITY DISCOUNTS

**MAXIMUM DISCOUNTS INCLUDE
7% EARLY SHIPPING DISCOUNT *
3% EARLY ORDER AND SHIPPED*
2% EARLY ORDER AND SHIPPED*
19% QUANTITY DISCOUNTS**

* Limited dates. Ask about programs.

the National, as well as each one of us today, are fortunate that this leader was such a man as Stoddie. It was as if the "Hopkins Hurricane" was destined for that job during the horrible war years. Only a man who loves golf and his profession as Stoddie does, and only a man whose faith in God and his country were unshakeable could have taken the pressure placed on this person, small in size, but great in stature.

In 1942 Stoddie moved to the Firestone Country Club in Akron, Ohio, where he was not only charged with the maintenance of the golf course, but with the Victory Gardens as well.

As we all know, war was declared and the greenskeepers were faced with many problems. There was a ban on fertilizer and mercury. Most men and women were being asked to work in war related industry or sent into the armed service. Rubber for tires and tubes was diverted to the war effort. Gas was rationed by coupon books. Key men were being called for duty. Harold at this time was considered "too old" for call up to active duty. So he did what he could to hold the association together.

All National meetings were cancelled and Harold was left to run the association with little help. As the war effort continued, the demand for men and supplies became greater and the task of keeping the National intact was even harder, especially when the greenskeeper profession was deemed non-essential by the War Manpower Committee.

Less of a man would have given up after this, but not Stoddie. Only after he was sure of the continued existence of the National did he dive into production for the war effort. He left Firestone in 1945 to work on a scientific farm located in Wayzata. After the war this farm was eventually sold to what is now the Wayzata Country Club.

Harold was only able to stay away from golf for a few years before he returned to the profession he loves. In 1956 the Stodolas moved to the Phoenix area where Stoddie again picked up his career at Paradise Valley. From there he moved to the Tucson Country Club in 1963 and remained until 1968.

Well, it must have become too hot for Stoddie in the deep south, so, in 1968 at the young age of 65, Harold and Ethel moved back to Minnesota where he assumed the superintendent position at the Mendakota Country Club. He retired as superintendent of Mendakota in 1977 and moved up the street to the Somerset Country Club where on a part time basis he still does that which he loves the most.

Over the years Harold has received many honors and awards. In 1944 our state association voted him an Honorary Member. Recently, he has received recognition several times. In 1977 our state association honored him for his many contributions to the MGSCA. Also in 1977 the National awarded Stoddie with the Distinguished Service Award at the Portland Conference. The Distinguished Service Award is only presented to those who have demonstrated dedication and outstanding service to GCSAA and the profession.

In 1974 the MCC honored Stoddie with the Mr. Green Thumb award and, in 1977, Mendakota Country Club held a tournament and awards banquet for Stoddie in appreciation for the many years of dedicated service to the club.

This man, who likes to call himself "the last of the Greenskeepers," summed up a philosophy he has lived by for many years and has taught others to live by. To the golfer he says, "play to have fun, take time to enjoy the trees and flowers, view with pleasure the lakes and ponds, maintain a relaxed and friendly atmosphere. Above all, don't get so wrapped up in your score and game. If you do, golf will become a nerve wracking game rather than a game of relaxation. Use golf as a time of easy swinging mentally and physically." To the superintendent he says, "don't take your work so seriously that it reflects on your efficiency. Remember golf is a game of skill and is for health and relaxation. Don't get all excited over a spot on a green or a little clover in a fairway. Do not let an ant hill on a green break your spirit or dollar spot on another get you down. Do your work well, take things in stride, be cheerful and good-natured and have a pleasant work for everyone."

This is the Stoddie I know.

He has often said, "I like to be around young people. They keep me young and alive". Stoddie has a love for the young people. When they complain about something, he responds, "oh cry eye", then goes on to point out the good of it all.

This man, who I have been priviledged to call friend for almost twenty-five years, has been an example for many of us to try to live up to. He has encouraged us when we were low and he has supported us when we have taken on difficult tasks. I have never ever heard him speak an unkind word about anyone and he always looks for the best, the beautiful, the good in every one and every thing.

superintendent and assistant superintendent. Have the ability to supervise employees, able to use all golf course machinery and ability to teach others, have some ability to identify types of turf, weeds, trees, insects, and diseases in this geographic area. Also to have some knowledge of minor equipment repair and troubleshooting.

EDUCATION: High school degree and have started or wanting to start a two or four year degree in turf management or related fields.

EXPERIENCE: At least two years experience on a golf course and have had some supervisory experience.

FRINGE BENEFITS: Paid health/dental insurance, paid vacation, paid sick leave, paid uniforms, and paid local dues.

INCOME: \$5.50-\$7.00 per hour.

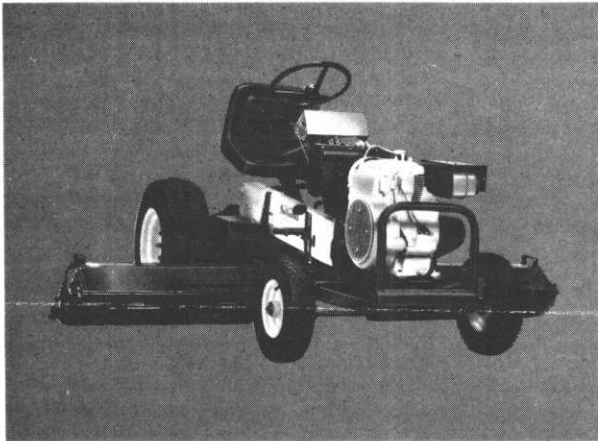
CONTACT: Paul Mayes, Midland Hills Country Club, 2001 Fulham Street, St. Paul, Minn. 55113. Phone: 612/631-1545

POSITION AVAILABLE

COURSE FOREMAN FOR MIDLAND HILLS COUNTRY CLUB

RESPONSIBILITIES: Be able to supervise all operations on the golf course under the directions of the golf course

For more uptime you need a National!



MODEL 84



MODEL 68

■ Ask any professional, National's known for providing maximum efficiency with minimum maintenance...and a lot more!

■ **New Steering Assembly** (Model 84) for easier steering and longer service life.

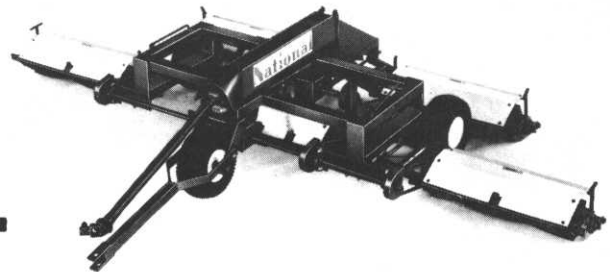
■ **B&S, I/C Heavy Duty Engine** (Model 68) for increased performance and less maintenance.

■ **Less Down Time.** Standard off-the-shelf items like belts and bearings, available from any local supplier.

■ **Greater Fuel Economy.** 44% to 62% less fuel consumption than power robbing, hydrostatic type rotary mowers.

■ **Lower Initial Cost** than that of mowers sold to do the same job.

MODEL PQ II



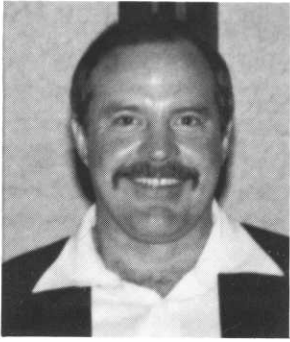
PARTS • SALES • SERVICE
CUSHMAN MOTOR CO., INC.

Jerry Commers

2909 E. FRANKLIN AVENUE • MINNEAPOLIS, MINNESOTA • PHONE: (612) 333-3487

John Sniker

Tim Commers



EDITOR'S CORNER

FRED ANDERSON, JR.

What a day for our member-guest scramble at Hazeltine National. And what a golf course. Chris Hague, host superintendent, and his staff did a great job preparing the course for our tournament. The afternoon session had a little better weather, but I'm sure all guests and members enjoyed themselves. I know my guests did.

The highlight of the evening was the fine tribute by Jerry Murphy about Harold Stodola and his many accomplishments and what he has done for our profession in general. With his wife, Ethel, friends and other members of the family in attendance, it was a very moving evening. Thanks again from all of us to Jerry

Murphy for his "personal touch".

I would like also to thank the following HOLE NOTE writers, Kevin Benson, Edenvale Golf Course, Tom Mundy, E-Z-GO, Chris Hague, Hazeltine National and Guy Green, M.G.A.; Randall Nelson and Jim Nicol for handling the member-guest scramble and the entire staff at Hazeltine National.

It was almost one year ago to the day that the infamous phrase "you've just gotta love that Mr. Twister" was uttered and would remain as our fishing theme. Can you imagine the lure of great fishing, fresh air, beautiful scenery and great comraderie with three other fellow superintendents, especially when two of them had fished the area before. The timing for the trip was perfect, the place, B.W.C.A. was also perfect and the selection of outfitters was also excellent. Once the outfitters van was loaded, Mahal, Caldwell, Smith and I were off for the drop-off point. The canoes were loaded and, hopefully, everything was secured in its place. We said goodbye to civilization. Doug and Dale in one canoe; Mark and I in the other. I could see we were in trouble because our canoe rode

A 4-STROKE OF GENIUS.

Never has a golf car answered so many needs – course profitability, player comfort, power and performance, ease of maintenance, sensitivity to the golfing environment. Yamaha engineers achieved it all with the new G2-A5 Gas Car, ideal for fleets. They went beyond the golf car industry, specifying materials and designs from fuel-conscious automobile engineering.

- Overhead Valve engine.
- Uses 20% less gas than competing 4-strokes.
- Low torque engine.
- New lighter centrifugal clutch.
- Quiets noise level to a whisper.
- engineered for your profitability.
- Two year warranty.



GOLF CAR MIDWEST

BURNSVILLE & ORTONVILLE, MN

Call Toll Free 800-328-6665

In Minnesota 800-352-2779

YAMAHA

extremely low in the water and our lack of canoeing experience showed. We had a tough time keeping our canoe in a straight line, but what we lacked in experience, we made up for in brute force. Our route would take us through many lakes, many portages down the Kawishiwi River and eventually end where Lake Gabbro and Bald Eagle Lake meet. A distance which seemed like 250 miles was probably only 30 miles. Time and distance were relative considering the weather and scenery and, of course, every second the thought of tipping the canoe into the cold water was on our minds. Home for the next few days would be a tent pitched on a bluff overlooking Lake Gabbro, next to a rapids. Talk about breathtaking! Fishing, however, would be less breathtaking. Between my "Mr. Twister", Dale's "Dr. Lizard" juice and many other fishing gimmicks, nothing seemed to attract the fish. Thank goodness for our outfitters food. Evenings were spent around a campfire watching the sunset over the trees and lake and having just a lot of good ole fashion B.S. sessions. As usual, all good things must come to an end and this was no exception. Our trip out was uneventful (thanks to Dale's map reading.

Sometimes all that beautiful scenery starts to look the same. Our last night was spent near Ely at a site picked by Doug, Dale and our outfitter for our early morning pick-up. The time went by too quickly, but it was time well spent in getting some of the past seasons bad times out of your mind and just spending time with friends. A trip is planned again, but this time we're going to catch fish.

Don't forget the Oct. 7 meeting at Golden Valley Country Club. Mike Olson will host.



1985 PRICES

- 1-3 ton \$200.00 F.O.B. Chaska
- 3-5 ton \$190.00 F.O.B. Chaska
- Truckload Bag \$140.00/ton + Freight
- Truckload Bulk \$120.00/ton + Freight

**MILORGANITE
FOR DORMANT TURF**

The following advantages of applying Milorganite on dormant turf may fit your maintenance program. Check them carefully.

1. **It works!** Milwaukee Country Club has applied 800 to 1200 lbs. Milorganite per acre each and every winter since 1932. The time - Thanksgiving week, before heavy snow fall on irrigated creeping bentgrass fairways. It works on bluegrass and fescue too.
2. **It Eliminates Spring Feeding!** The grass "greens up" early without soft succulent growth. The first calendar year feeding at Milwaukee Country Club is the second week in June - Milorganite, naturally - again since 1932.
3. **It's a Work Saver!** No more worries about wet Spring seasons and lack of Spring labor. November through January applications (slightly earlier in Northern Canada) are made on dormant turf with no golfer interference and when the work load is light.
4. **Delivery is Prompt With Nitrogen at its Highest!** October through December are slow shipping months. Thus, rail cars and trucks can deliver promptly. The same months find production of Milorganite with nitrogen at its highest. It is not unusual to get a half percent nitrogen bonus over the guarantee of 6%.
5. **Storage is no problem!** Unlike chemicals and some synthetic organics, Milorganite is non-leachable. Its weight and adherence qualities also make it stay in place even on severe slopes.
6. **Earlier greening than waiting until Spring and applying a chemical!** Plot work in Minnesota proves this. In one series of tests conventional applications of other nitrogen fertilizers failed to catch up with early winter applied Milorganite throughout the entire growing season!
7. **It will not increase snowmold!** This disease, or for that matter any other, have never been problems at Milwaukee Country Club, where fairway fungicides have never been used. In plot work, we have purposely applied the excessive rate of 200 lbs. per 1,000 sq. ft. with no snowmold observed. Putting greens should be protected with the fungicide applied dry using Milorganite at 30 to 50 lbs. per 1,000 sq. ft. as the carrier. This has been standard practice for many years in the north country.



MILORGANITE ANALYSIS

	Percent
Nitrogen	6.25
Phosphorus	2.38
Potassium	0.315
Sulfur	1.02
Calcium	0.69
Magnesium	0.32
Iron	6.40
Aluminum	1.20
Chromium	0.60
Lead	0.046
Manganese	0.018
Sodium	0.136
Zinc	0.144
	Parts Per Million
Cadmium	79.0
Cobalt	5.1
Copper	405.0
Mercury	4.8
Molybdenum	13.0



LANDSCAPE & TURF
307 E. 6th St.
Chaska, Mn 55318

CALL COLLECT MILT OR JOHN 612-448-3300

POTASSIUM - A MIRACLE ELEMENT?

by ROBERT C. SHEARMAN
Associate Professor
Department of Horticulture
University of Nebraska

Evidence gathered in surveys of turfgrass nutrition programs shows that golf course superintendents are taking more interest in the role of potassium in their turfgrass nutrition programs. The surveys were conducted at GCSAA Nutrition Seminars. Further evidence came from superintendents attending regional turfgrass conferences. The growing interest in potassium nutrition has also coincided with the increased use of light, frequent sand topdressing, and with the use of higher sand concentrations in rootzone media.

Potassium is one of 16 essential elements required by plants for growth and development. Though it is an essential element, potassium is not a constituent of turfgrass tissues. It is found in plants only in the elemental form (K⁺). Potassium enhances carbohydrate synthesis and translocation, protein and amino acid synthesis, and enzyme activity. It controls transpiration, respiration, and uptake of certain nutrients, like nitrogen and magnesium. It has been reported to enhance rooting and stress tolerance of turfs.

Turfgrasses require fairly large quantities of potassium, second only to nitrogen, and there is growing evidence that potassium may be useful to turfgrasses in equal amounts to nitrogen, particularly in relation to environmental stress tolerance. The term "luxury consumption" has often been associated with potassium since it may be taken up by plants in greater quantities than that required for growth and development. Luxury consumption of potassium has been associated with crop production and subsequently has been related to turfgrass management. This association may not be fair or realistic, since clipping yield and dry matter production are not of primary concern to superintendents. But increased turfgrass stress tolerance is.

Tolerance for heat, cold, drought, and wear grows with increased potassium fertilization of turfs. Therefore, luxury consumption of potassium likely does not occur in relationship to turfgrass stress tolerance.

A drought avoidance study conducted at Nebraska on a Kentucky bluegrass turf growing on a soil that was high in potassium (i.e., greater than 500 pounds available per acre) demonstrated that wilting tendency decreased with increasing potassium, ranging from zero to eight pounds per 1,000 square feet during the growing season. Recovery from drought injury was also enhanced by potassium fertilization. The evapotranspiration rate declined and turfgrass depth and extent of rooting increased with potassium fertilization in this Nebraska study. Wear tolerance increased and desiccation injury decreased with potassium treatment in a Michigan study conducted on a Penncross creeping bentgrass green. These responses were observed even though soil potassium levels were considered to be high. Similar reports of stress exist for warm season turfgrass species like St. Augustine grass and bermudagrass.

Potassium deficiency symptoms are usually subtle and not seen as easily as in nitrogen-deficient turf. Deficiency symptoms often show up as reduced tolerance to environmental stress and to disease. Potassium deficiencies occur most often on sandy soils that receive frequent irrigation. Daily irrigation on a seaside creeping bentgrass green growing on a sandy rootzone resulted in a soil potassium level only 79% of a similar grass growing on the same rootzone, but given the same amount of water in three installments per week. In this study, potassium content of turfgrass tissues showed a similar trend as the soil levels; lower levels were found in the frequently irrigated turf.

On sandy soils with low nutrient retention capabilities, it is better to apply potassium in light and frequent, rather than heavy and less-frequent, applications. This is particularly the case when frequent irrigation is also required to maintain desired turfgrass quality. The low nutrient retention capability of sand coupled with frequent

irrigation, results in much of the potassium being leached from the rootzone and a subsequent reduction in potassium uptake by the plant. Light, frequent topdressing with sand results in similar potassium management problems as those encountered with high sand content rootzones. Superintendents need to be aware of these relationships and to adjust their nutrition programs accordingly.

Potassium is not a miracle element; it is an essential nutrient, and superintendents should keep its role in perspective. A fair degree of evidence supports potassium's role in turfgrass stress tolerance, but controversy exists among turfgrass researchers regarding its potential benefits. For example, concern has been raised about high potassium levels increasing *Poa pratensis* competition in turfs, but little research evidence supports this concern.

More work is needed to further delineate the role of potassium in golf course fertilization programs, and superintendents should be willing to approach its use for enhancing stress tolerance in a reasonable manner. A

concerted research effort with potassium is being conducted at the University of Nebraska. This research is part of an extensive cultural practice research project supported by the USGA.

(Credit: USGA Green Section Record)

FOR SALE

1974 GM3 NEEDS REELS AND TIRES

1971 68" NATIONAL MOWER

BEST OFFER ON BOTH

CONTACT: Paul Diegnau or Don Larsen
Parkview G.C., 1310 Cliff Rd.,
Eagan, MN 55123. Phone 612/454-9884

EXIDE BATTERIES FOR GAS AND ELECTRIC GOLF CARS-TRUCKSTERS-TRACTORS-MOWERS, ECT.

FOR BEST PRICE, CALL:

CUSHMAN MOTOR CO. INC.....333-3487

Ryan Renovaire Fairway Aerifier--Pull Type
Rainbird Impact Heads and Keys #16C
Par Aide 15" Aluminum Bunker Rakes
Contact Dan Hanson, Minikahda Club
612/926-4167



Tom Haugen (Minnesota)
507-234-5102
(Whse - Janesville)
612-445-8742



BRAYTON
CHEMICALS, INC.

SERVING YOUR TURF NEEDS WITH PRODUCTS FROM:

Applied Biochemists * Cutrine
Brayton * Custom Blend Fertilizers
Clearys * 3336, PMAS
Dupont * Tersan 1991, Tupersan
Gordons * Trimec, Betasan
ICI * Gro Safe, Fusilade
Mobay * Oftanol, Bayleton
Noram-Tuco * Nitroform, Acti-Dione
Rohm-Haas * Fore, Dithane
Solo * Backpacks, Handheld Sprayers

Brandt * Turf Mix Micro Package
Ciba-Geigy * Subdue, Diazinon
Dow * Turflon D, Dursban
Elanco * Balan, Surflan
Hoechst * Acclaim
Mallinckrodt * Vorlan, Duosan
Monsanto * Roundup
Rhone Poulenc * Chipco 26019, Ronstar
SDS Biotech * Daconil, Dacthal
Union Carbide * Sevin, Weedone DPC