

on the importance of syringing to lower the temperature of the turfgrass from going into stress. The eye appealing talk by Mr. Bidwell on what flowers can do for you on your golf course, clubhouse and club entrance area and the impression it leaves on people. Dr. Larsen's re-emphasizing the point on not applying the same chemical back to back in order to prevent disease resistance to the chemical. Even with the newer and longer acting chemicals, don't get yourself in trouble as happened with that of Benomyl overuse and abuse. And finally Don Herfort's talk on the do's and don't's of designing a new green. A special thanks goes out to all the speakers; Don Lindblad and his staff at Majestic Oaks for another fine meal and facility; our session chairpeople, Chris Hague, Hazeltine, and Scott Hoffman, Madden's. With over 180 served for lunch (that's 30 more than last year) it's a credit to our committees and association as a whole that the educational seminars are so well arranged and attended.

Coming addition in the HOLE NOTES, if all goes well, will be a "Question and Answer" section. Questions submitted will be answered by the experts. No matter what your question is, write it down, no names, send it in (I'll tell you where next issue) and we'll answer it as soon as possible.

COMING MEETINGS:

- April 15: New Prague Golf Club,
Scott Proshok and Bob Adams,
hosts
- May 13: River Falls Golf Club,
Scott Ainsworth, host
- June 19: Turf Expo
- June 30: Annual Picnic
- July 8: Northland Country Club,
Mike Netzel, host
- Aug. 12: Island View Country Club,
Mark Poppitz, host
- Sept. 9: Guest Day Scramble at Hazeltine
National, Chris Hague, host
- Oct. 7: Golden Valley Country Club
Mike Olson, host

NEW TRENDS IN TURF MAINTENANCE EQUIPMENT

PART 1

by JAMES KAUFMAN
MTI DISTRIBUTING COMPANY

A subject such as this usually invites the reader to anticipate miracle products and sensational solutions to the everyday job. Advancement in technology is rather rapid when you consider it in 50 year increments. But please keep in mind, the process in bringing to market, machines that are better than 10 and 5 years ago, is a slow painstaking one. This article will discuss a variety of maintenance considerations and what better products may be available for handling them more effectively.

WEIGHT

Lighter weight and less compaction is a turf man's goal for almost any piece of equipment. Recognizing this, industry will make improvements through new design and materials, resulting in less overall size, and with less weight being the trend. Reduced ground pressure (pounds per square inch) will come about through lighter weight and higher strength materials, lighter weight engines, and the judicious use of floatation type tires.

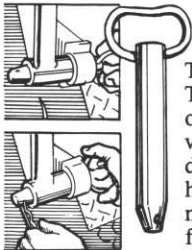
NOISE

There has been a long term trend to quieter products. The European market is most noise sensitive and has led the world in low noise design. The standards for privacy will become more strict as the consumer environmental concern marches ahead. Noise suppression will evolve with more attention paid to the multiple sources of noise. As an example, of a rotary mowers total machine noise, at least as much noise comes from the blade as comes from the engine exhaust. One hears the loudest sound, while much of the other contributing noises are subordinated. The internal parts of an engine (valves), etc., plus transmissions all add to the total noise impact. Considerable art exists today in tuning noise to a certain tone; thereby lessening its impact. Even though the decibel rating may be higher, the tone of the

continued on Page 13

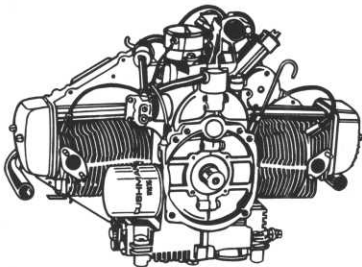
WHAT MAKES THE CUSHMAN TURF-CARE SYSTEM WORTH THE INVESTMENT:

*Aerating, hauling, dumping, spraying, seeding,
spreading and top dressing —
one vehicle does the work of a fleet of machines.*



The exclusive Cushman pin disconnect system lets you attach and remove accessories in minutes.

A NEW 22-HP ENGINE.



The Cushman Turf-Truckster™ is now equipped with a new 22-hp gas engine.

It gives you the power to haul a full load uphill, without straining. It maintains a sure, steady speed while you're spraying or spreading.

And it's built tough. The crankshaft is forged alloy steel. The cylinder heads are reinforced for extra strength under stress. And the hydraulic pump is mounted to the engine for better service life and smooth operation.

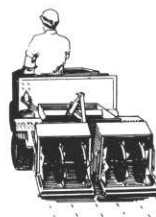
Team up the new 22-hp Turf-Truckster with any of the following accessories for a complete Turf-Care System.

THE AERATORS.

Because you have two types of turf to aerate, Cushman makes two aerator attachments for your Turf-Truckster.

The Greensaver® is ideal for greens and other delicate areas . . . while the Quick Aerator makes short work of big jobs (it covers a 46" swath).

Both can be equipped with interchangeable coring or deep-slicing tines.



THE DUMP BOXES.



Again, you have a choice! Our Short Box is a high quality dump box . . . and our Flatbed/Box converts from flatbed carrier to dump box just by adding the bolt-on sides and tailgate. Both can be hydraulically dumped right from the driver's seat.

THE SPRAYERS.

Choose the capacity you need . . . our big 150-gallon sprayer or 100-gallon model. Both give you uniform spraying controlled by the Turf-Truckster's ground speed governor.



THE SPREADERS.

Two choices here, too. The 700-lb. capacity Vicon Spreader with a 45' swath. Or the Spreader/Seeder with a 300-lb. capacity. Both give you smooth, uniform spreading because application rates are controlled by the Turf-Truckster's ground speed governor.



THE TOP DRESSER.

Everything from rock salt to powdered fertilizer can be uniformly spread across a 31½" swath at a rate of up to 220' per minute.



A FREE DEMONSTRATION

See the Cushman Turf-Care System in action.

CUSHMAN®

It Works Harder Because It's Built Better

"SINCE 1949 - SATISFACTION GUARANTEED"

Jerry Commers

PARTS • SALES • SERVICE

John Sniker

CUSHMAN MOTOR CO., INC.

Tim Commers

2909 E. FRANKLIN AVENUE • MINNEAPOLIS, MINNESOTA • PHONE: (612) 333-3487

noise is sometimes more important. As these specialized areas of attention progress, the customer's expectations and demands rise. Last year's standards becomes next year's minimums. Noise technology is better understood today than ten years ago, and will contribute to quieter running products as industry progresses.

RELIABLE - DURABLE

The turf industry in general is becoming more aware and more demanding for quality, reliability and durability. The competitive aspects of the market bring a greater focus on this subject and the end users will have a greater choice of products in a quality range. One category that demonstrates this upward trend in quality is the mid-sized rotaries, 32" to 52" walk behind units. These products today have become very sophisticated, including fingertip steering. A significant upgrade in the power plants on these products makes them very durable, performing jobs as well as products that are several thousand dollars higher in cost. The trend will continue to upgrade the life hour length of engines and machines.

CONTINUED IN MAY ISSUE

FOR SALE

1979 Jacobsen F-10 w/10 blade reels
725 actual hours..good condition
\$18,000. Contact Doug Mahal at
Interlachen C.C., 929-5352.

One used Toro 3 gang Tee Mower
Mayflower Country Club
Fairfax, Minnesota 55332

1. 7-1979 - 7 blade spartans
 2. 1960 International cub Tractor/rotary
 3. 1972 Simplicity Garden Tractor/48" rotary, 42" snow blower & 36" rototiller
 4. 1968 Jacobsen Turfking
- CALL JIM LINDBLAD, 473-6955

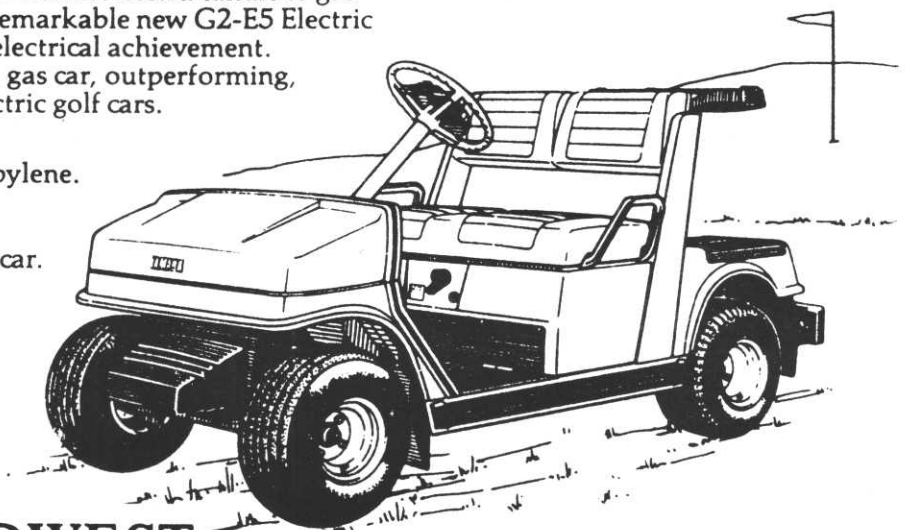
EXIDE BATTERIES!!
GAS & ELECTRIC GOLF CARS
TRUCKSTERS-TRACTORS-MOWERS ETC.
CALL JERRY FOR QUANTITY DISC.
CUSHMAN MOTOR CO. INC. 333-3487

WANTED: Old, still workable turf equipment. Tax deductible gift. Contact: Joe Baker, St. Joseph's Home for Children, 1121 E. 46th St., Mpls., MN. 55407 (612) 827-6241.

RE-DISCOVER ELECTRICITY.

If you thought electric golf cars couldn't hold a candle to gas cars, take another look. Yamaha's remarkable new G2-E5 Electric Golf Car represents a milestone in electrical achievement. Here's an electric car that acts like a gas car, outperforming, outdistancing, outlasting other electric golf cars.

- Ultra-light, high-impact polypropylene.
- Reduced energy costs.
- Increases profits.
- Performs with the power of a gas car.
- Two year warranty.



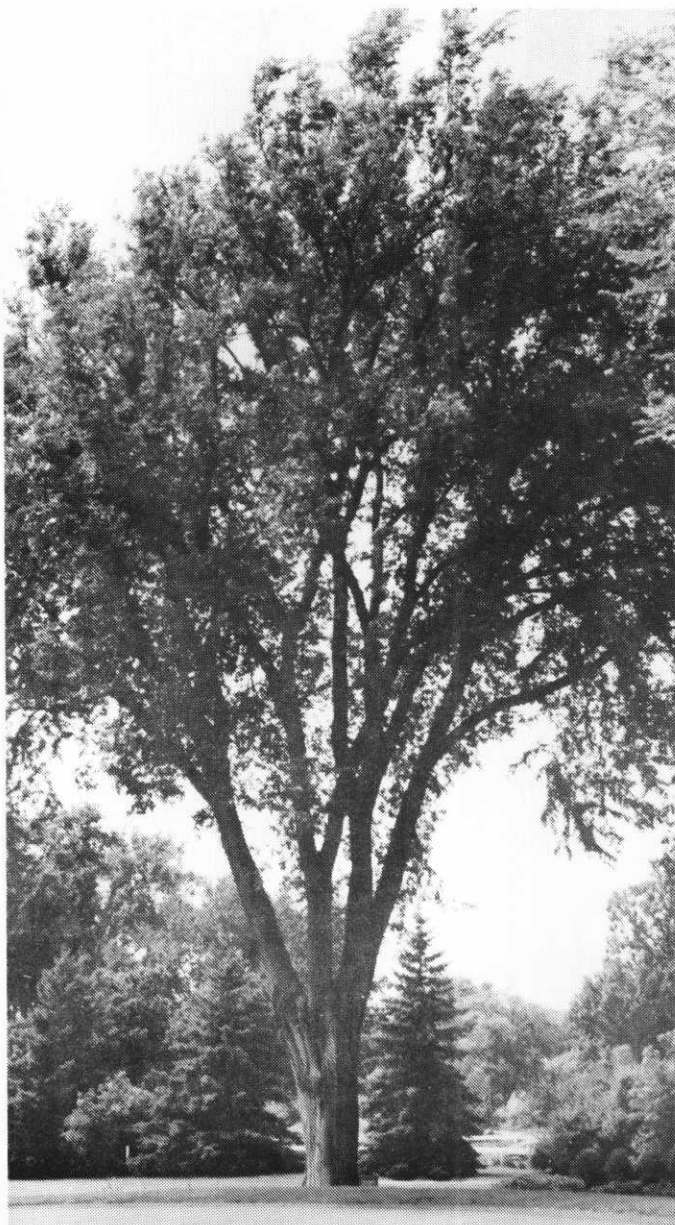
GOLF CAR MIDWEST
BURNSVILLE & ORTONVILLE, MN

Call Toll Free 800-328-6665

In Minnesota 800-352-2779

YAMAHA

CONTROL DUTCH ELM DISEASE GUARANTEED!



Source Technology Biologicals, Inc. (STB) offers a money-back guarantee for its product **PHYTON-27™**

STB guarantees that **PHYTON-27** will be effective in treating elms with up to a 15% Dutch elm disease infection at the time of treatment. STB makes its guarantee for a full two years after the date of the initial injection.

The guarantee applies only when the injection is performed by an applicator certified by STB.

Qualifying as a certified applicator will start you on your way to developing a guaranteed treatment approach to manage your elms.

STB provides much of the know-how assistance to become a certified **PHYTON-27** applicator.

RECORD OF SUCCESS!

Percent of D.e.d. visually evaluated in 1981	Number of elms treated in 1981	Number of elms visually evaluated as D.e.d. free, three years after treatment	Percent of elms visually evaluated as D.e.d. free, three years after treatment
0%	96 elms	89 elms	93%
5%	63 elms	58 elms	92%
10%	49 elms	45 elms	92%
20%	11 elms	9 elms	82%
30% or more	16 elms	12 elms	75%
	235 elms	213 elms	

Act now to take advantage of this opportunity.

FOR MORE INFORMATION

R.L. GOULD & CO.
3711 Lexington Ave. N.
St. Paul, MN 55112

In Twin Cities (612) 484-8411
 In Minnesota (800) 592-9513
 Non-Minnesota (800) 328-9564

Phyton
27

LAWN GARDEN AND TURF
GOULD'S
 SUPPLIES AND EQUIPMENT

Please send complete information and prices

Name _____
 Title _____
 Co./Agency _____
 Address _____
 City _____ State _____ Zip _____
 Phone _____