



AFFILIATED WITH GOLF COURSE SUPERINTENDENTS' ASSN. OF AMERICA

VOLUME 13 - NUMBER 11

NOVEMBER 1984

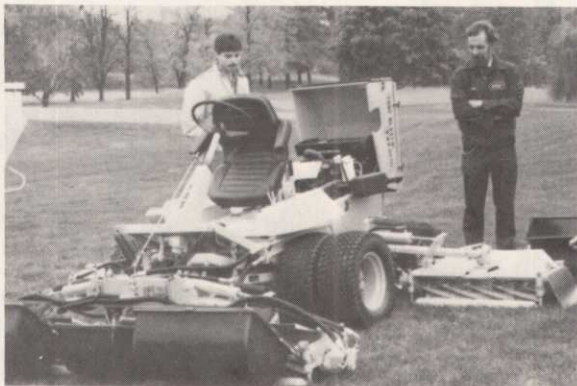
INTERACTION AT INTERLACHEN



NOW HEAR THIS! Host Superintendent Doug Mahal gives up some secrets on putting green care.



"BEDDY BYE". Doctor Donald White discusses how to put your course to bed for the winter.



HIGH-POWERED. Kromer Co. shows off new five gang fairway mower to interested superintendents.



DON'T MISS IT! Co-Chairman Jim Wodash puts finishing touches on plans for super big turf conference.