

EDITOR'S CORNER

by DOUG MAHAL
 Chairman
 Editorial Committee

It's May again and most of the courses I know of are in mid-season condition already. April seemed a bit too cool to make the turf pop out of the ground which gave the superintendents a little more time to get the courses cleaned up before a great deal of cutting was necessary. Though the turf came out of the winter in good condition, we may pay in July for not having a good deep frost in January and February. One might consider aerating as much as possible in May to alleviate what I see as being eventual heavy compaction this summer.

Our April meeting in Owatonna was quite well attended and believe it or not, we had the great fortune of being able to play golf. The sun was out in full but our great host superintendent Randy Nelson certainly has no problems with air circulation (at least he

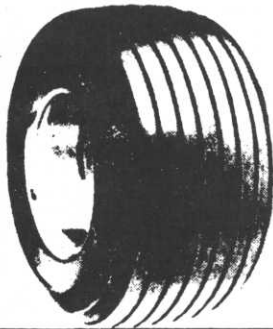
didn't that day). Winds were howling at 30-40 mph. Dr. John Ball of U of M. Waseca was also on hand to give a presentation on arboriculture and some of the newly researched tree maintenance practices. Look for Dr. Ball's recap of this discussion in HOLE NOTES and our thanks to him for making our day more informative and worthwhile.

While on the subject, plan to attend our May 14 meeting at Hastings Country Club with host superintendent Steve Schumacher. Russ Adams has lined up another guest speaker, Dr. David French of U of M, who will update us on new injection procedures and chemical compounds involved in the treatment of Dutch Elm Disease.

Many thanks to last month's HOLE NOTES contributors Larry Mueller of Minnesota Valley Club and Scott Kaercher of Turfco Mfg. I really appreciate the fact I'm able to find enthusiastic superintendents and associate members willing to share their ideas. I hope that trend continues. Have an enjoyable May.

GOLF CAR MIDWEST

Parts and Service Specials !!



NEW!!

18x8.50-8

**MOUNTED ON
 4 HOLE WHEEL!**

\$ 27.95

Harley-Davidson

TOP END - ENGINE REBUILD SPECIAL

PARTS & LABOR
 NOW ONLY..... **\$ 35.95**

INCLUDES: Boring, New Piston, Pin,
 Rings and Clips!

**GOLF CAR
 BATTERIES**

12 VOLT, MAINTENANCE FREE BATTERIES FOR
 YAMAHA, E-Z-GO AND HARLEYS, NOW ONLY..... **\$26.95**

6 VOLT, H.D. 220 ELECTRIC GOLF CAR BATTERIES
 FOR MOST MODELS, NOW ONLY..... **\$49.95**



GOLF CAR MIDWEST

3350 West Highway 13
 Burnsville, Minnesota 55337
 612/890-5541

CALL TOLL FREE 800-328-6665

IN MINNESOTA 800-352-2779

There's a new club pro in town.

The amazing Daihatsu HI-JET!



Inch for inch, and dollar for dollar, the Daihatsu (di-hot-sue) is in a class by itself. For lots of reasons.

First off, it's **not** a converted golf cart, or made-over anything else.

The Daihatsu is exactly what it was designed and built to be. The closest thing yet to the perfect off-road vehicle for hauling, for seeding, for aerating, for top dressing and spraying. For whatever it takes to maintain your golf course.

The Daihatsu can haul up to 1,000 pounds of just about anything. And even when it's

empty, it's loaded — with all the built-to-last features you want and need (and should demand) in an off-road vehicle.

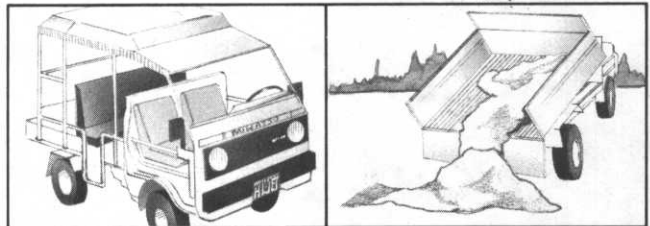
For instance, standard equipment includes everything from side mirrors, horn, and a full complement of visual instruments to seat belts, spare tire, and jack.

Optional equipment. Impressive. And useful.

- Fiberglass cab with windshield
- tow hitch
- heater
- doors
- electric hydraulic dump box
- people mover
- and more.

That's about the size of it except for the size of it. The Daihatsu HI-JET is compact. Really compact. Only 125.8 inches long, 54.9 inches wide, 48.4 inches high. But it makes every inch count. And every dollar.

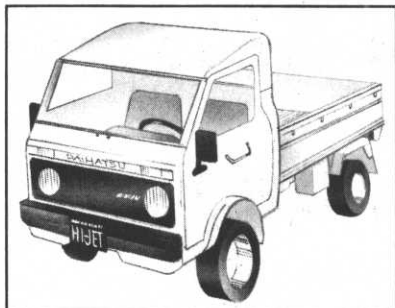
As good as the Daihatsu HI-JET sounds (and performs) you probably think it's expensive. It's



not. It actually costs **less** than competition, which means it has no competition.

MINNESOTA TORO, INC.
14900 21st AVENUE NORTH
PLYMOUTH, MN 55441
(612) 475-2200

TOLL FREE NUMBERS
1-800-362-3665 MN
1-800-328-3558 OUTSTATE



1974 saw the beginning of what was to become Northrup King's Professional Turfgrass Products Division.

Larry Vetter came on board in 1977 with N.K and it is largely his efforts that started the department we now know as Medalist Turf Products rolling.

Although few in numbers, we in Medalist have tried to offer a quality product, professional expertise and information when needed along with ongoing support for the M.G.C.S.A.

I would like to take this opportunity to thank those of you in the Association who continue to support our efforts along with the efforts of an excellent group of distributors in the state who continue to service you with Medalist Turf Products.

CUSHMAN ADDS NEW LINE

SNS Motor Imports, Inc. is pleased to announce the appointment of its new Sanfu TPV600 dealer, Cushman Motor Company, Inc. in Minneapolis, Minnesota. The Sanfu TPV600 vehicle is an off road personnel and utility vehicle being distributed

throughout the United States with golf course maintenance being one of its primary usages. Mr. Jerry Commers of Cushman Motor Company, Inc. has indicated a great confidence in Minnesota golf course applications due to the vehicle's superb quality and performance, utilizing such standard features as a 27 h.p. water cooled engine mounted over the rear wheels and turf tires. Options such as a cab top, doors and heater further enhance its all weather capabilities.

NEW MEMBERS



WELCOME. Left to right, first row: Dick Loomis, Scott Proshok. Second row: Dale Wysocki, Bob Adams and Jon Heimsness.

Save!

** SPRING SALE **



OVER STOCK REDUCTION

- **CLEARY'S MCPP** 2x 2 $\frac{1}{2}$ gal. 51.00cs.
- **CLEARY'S WET&HOLD** 2x2 $\frac{1}{2}$ gal. \$79.00cs.
(spreader/sticker)
- **AQUA GROW 'S'** 46 lb. drum \$35.00dr.
- **SPECIALS ON PAR AID & STANDARD**

LANDSCAPE & TURF

307 E 6th St, Chaska, MN

612-448-3300

John Wiley call collect Milt Wiley



RANSOMES

The compact, lightweight

Motor 180

Ride-on triple mower

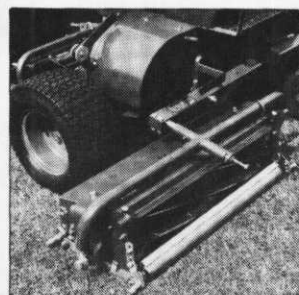


The Motor 180 has all the RIGHT features for today's ride-on mowing

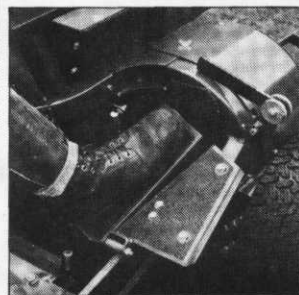
SPECIAL LEASING TERMS AVAILABLE



Superb handling ability



Floating head cutting units



Simple to operate



Easy to transport

THE COMPACT, LIGHTWEIGHT RIDE-ON TRIPLE WITH CUTTING WIDTH OF 71 IN. REDUCES COMPACTION, INCREASES PRODUCTIVITY, ELIMINATES SCALPING.

The Motor 180 is versatile enough to trim golf tees and surrounds. Its low profile design hugs the ground giving outstanding stability and performance, even on steep slopes. Instant response from the single foot pedal control for forward or reverse drive gives the ultimate in handling ability. Choice of 5 knife fixed head and 7 knife floating head cutting units lets you choose the right finish for your turf. With cutter drive completely independent of ground speed the cutting efficiency is maintained even when maneuvering at low speed. Units latch out of work manually. Mechanical lift to units from the operator's seat and grasscatchers are optional.

FOR "HANDS-ON" DEMONSTRATION OF THIS INCREDIBLE MOWER . . . CALL TODAY

Distributed Exclusively By



502 No. Front St.
Mankato, MN 56001
(507) 345-5083