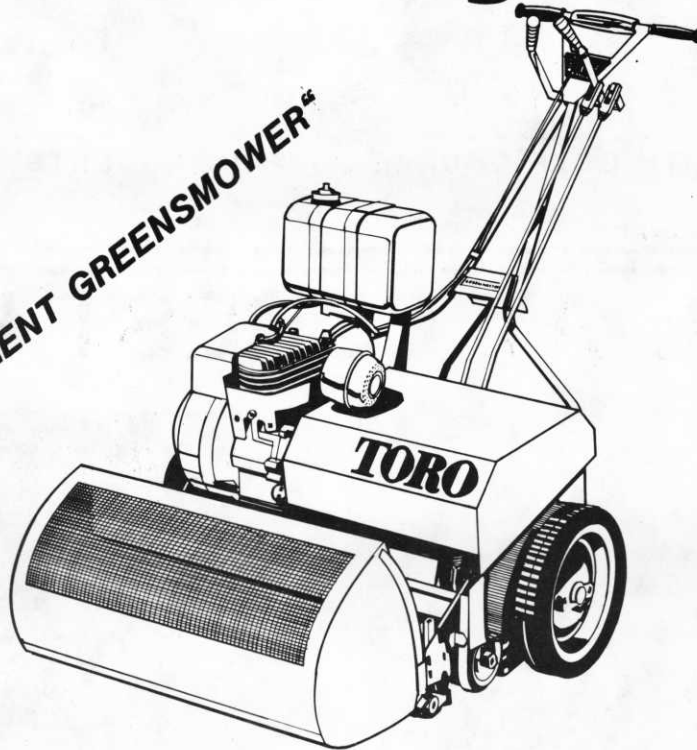


Greensmower Series 4 The Professional for beautiful greens.

"TOURNAMENT GREENSMOWER"



The Toro® Greensmower Series 4 is a 21 inch walk behind mower powered by a 3.5 h.p., 4 cycle engine. It features a 5 inch diameter, 8 blade reel assembly, grass catcher, transport wheels and more. The result is excellent quality of cut and superior performance, which is imperative in professional greens maintenance.



MTI DISTRIBUTING CO.

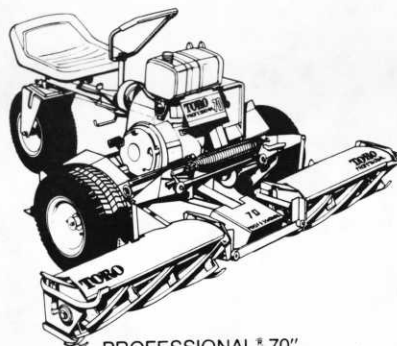
**THE PROFESSIONALS
THAT KEEP YOU CUTTING.**

NAME CHANGE FROM MINNESOTA TORO, INC.

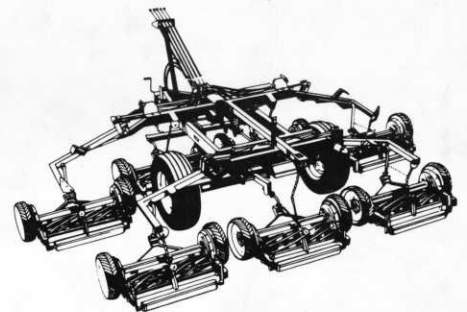
(612)475-2200 1-800-362-3665 MN 1-800-328-3558 OUTSTATE



GROUNDMASTER 72
with side discharge deck



PROFESSIONAL® 70"



REELMASTER TRANSPORT FRAME —
7 UNIT (MODEL NO. 33457)

HOLE NOTES

OFFICIAL PUBLICATION OF THE MINNESOTA GOLF
COURSE SUPERINTENDENTS' ASSOCIATION

EDITOR: WARREN J. REBHOLZ
6550 YORK AVENUE SOUTH
SUITE 402
EDINA, MINNESOTA 55435
PHONE: 612/927-4643

ASSOCIATE EDITOR: GUY R. GREEN

EDITORIAL COMMITTEE CHAIRMAN:
DOUGLAS MAHAL

M.G.C.S.A. BOARD OF DIRECTORS FOR 1984:

OFFICERS

PRESIDENT.....DONAVAN LINDBLAD
VICE-PRESIDENT....DALE CALDWELL
SECRETARY.....KERRY GLADER
TREASURER.....MARK SMITH
EX-OFFICIO.....JOHN NYLUND

DIRECTORS

RUSSELL ADAMS	LYLE OLSON
SCOTT HOFFMAN	KEITH SCOTT
DOUGLAS MAHAL	JAMES WODASH

THE FOLLOWING IS A LIST OF OFFICE
TELEPHONE NUMBERS FOR THE ENTIRE BOARD:
AREA CODE 612.

DONAVAN LINDBLAD.....755-2140
DALE CALDWELL.....646-7125
KERRY GLADER.....253-5250
MARK SMITH.....544-4474
JOHN NYLUND.....941-5117
RUSSELL ADAMS.....373-1647
SCOTT HOFFMAN.....218/829-2811
DOUGLAS MAHAL.....929-1661
LYLE OLSON.....464-3097
KEITH SCOTT.....938-6900
JAMES WODASH.....235-8233

FOR SALE

MODEL 600 FORD TRACTOR
2 SPEED, W/CYCLE BAR ATTACHEMNT
5 GANG TORO ROUGH MOWER AND FRAME
CONTACT: JOHN NYLUND
WORK:941-5117 HOME: 934-0125



FROM THE PRESIDENT'S DESK

DON LINDBLAD

Those of you who missed the Green Expo '84 missed a great show. Keith and several members of other turf related associations out did themselves this time. I hope this kind of working relationship among turf related associations can continue.

Perhaps now is the time to review the safety habits of you and your crew. With familiarity comes carelessness. In the rush and stress of the busy season, shortcuts on safety procedures are tempting and can lead to bad accidents. I suggest a safety meeting with your crew where you review and stress the importance of using the equipment properly and according to the instructions of the manufacturer. What brings this so graphically to mind is the accident our treasuere, Mark Smith, had with a chain saw. Please give Mark a call and wish him well.

I have to pat the staff in the office on the back for the fine job they did on the 1984 Membership Roster. Only they know the endless detail that goes with trying to keep classifications, addresses and phone numbers up to date. However, with all the work, without you informing them of changes, it will not be kept current. So you see, the ultimate responsibility still lies with the member.

This year our picnic will be bigger and better than before. Please bring the family out for a great day at Baker Park.

FOR SALE

106 lockers, installed but not used.
12" x 12" x 72", complete with base and slanted cover. Some back to back and some against the wall type. Phone: 218/498-2201.

THE SPILT PERSONALITY OF THE BROOKTREE MUNICIPAL GOLF COURSE

by RICHARD DICKS, JR.
Golf Course Superintendent
Brooktree Municipal Golf Course

The Brooktree Municipal Golf Course was developed in two stages by a private company and sold to the City of Owatonna one nine at a time. The first nine opened in 1963 and was known as the Owatonna Municipal Golf Course. The course was constructed along a creek in a flood plain area and is set in a fairly mature area. The greens are small, averaging 4,500 square feet. They are elevated but flat, making them an invisible target. They were originally planted with Penncross but now co-exist with poa Annuua. The tees, like the greens, are small, averaging only 4,000 square feet and were originally planted with common Kentucky bluegrass as was the rest of the course. The course itself plays 2972 yards from the M.G.A. plates and is a Par 35. Without playing extremely long, the course can be very difficult as the creek and/or out of bounds areas exist on every hole.

The second nine, known as the Brooktree Golf Course, opened in 1976 and was leased by the City of Owatonna in 1978. The city finally purchased the second nine in 1981. The second nine was constructed on farm land and in contrast to the first nine holes is located just above the flood plain and is very wide open. The tees average over 6,000 square feet and were planted with the more improved varieties of bluegrass as were the fairways and roughs. The greens at the time of construction were planted with a variety of creeping bentgrass not known yet as Penneagle. These greens ten years after they were planted are still very pure. The greens average 5,874 square feet and are elevated at the back to face the golfer. The real hazard on the course is the pond between hole seventeen and eighteen which provide a challenging finish to an otherwise hit a way golf course of 3411 yards.

The two courses have been run as one eighteen hole course known as the Brooktree

Municipal Golf Course since 1978. The contrasting courses make for interesting and diverse playing conditions. Because the two courses are completely separated, we have found it more efficient to have two people changing the cup and tee positions. This also allows us to spend more time patching divots on the smaller tees of the front nine. Our irrigation systems are also completely different and separate systems. Both systems are manual and are run one at a time as over watering is inevitable if they are run simultaneously.

To help make the greens of the two courses play more consistent we have been topdressing with a fifty percent sand mixture which is consistent with that of the back nine. We have also decided to cut back on the fertility of the more aggressive penneagle greens. They seem to develop an abundance of matty material that topdressing and aerifying is not by itself eliminating.

Some courses are designed with diversity throughout, but the Brooktree Municipal Golf Course markedly plays with diversity from one nine to the other. In adding up the differences between the nines, our maintenance aim is to maintain the small tees of the front nine and expand them when time permits and to make the greens play as consistent as possible.

NEW UTILITY TRUCKS ARE INTRODUCED

A new line of utility trucks designed to perform a wide variety of grounds maintenance service has been introduced by Jacobsen Division of Textron, Inc.

Two models unveiled in the line are the T1000 with a 1000 lb. capacity and the T2000 which has a capacity of up to 2000 lbs.

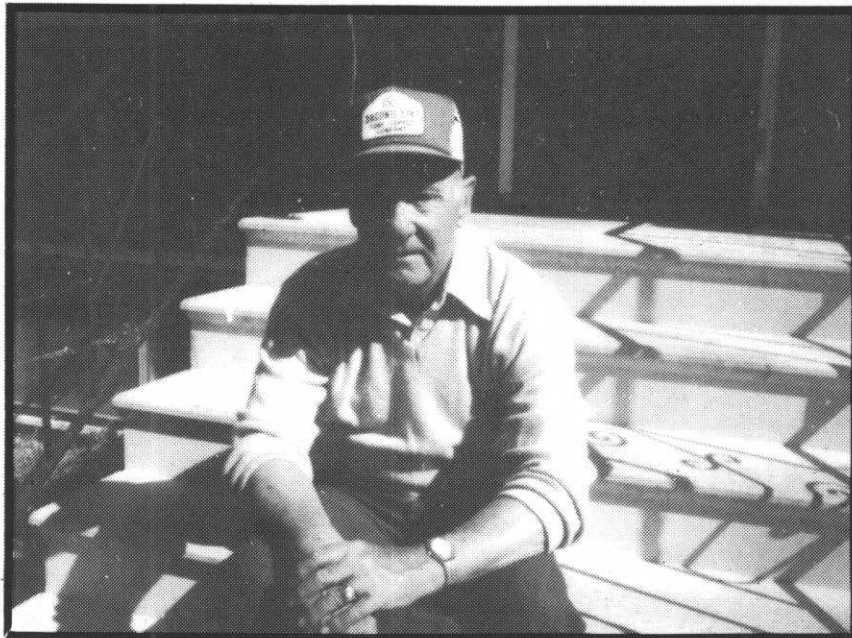
With attachments, the latter vehicle performs a variety of turf care tasks in addition to carrying personnel and hauling equipment and materials.

A four-wheel truck the T1000 is powered through an automatic-type transmission by a fuel-efficient Jacobsen air-cooled engine that will operate all day on its 6-gal. tank of gas. Riding on 71-in. wheelbase

continued on Page 5

TURF SUPPLY COMPANY

The most complete line of Turf Products
For complete Turf Management
Under One Company



MISSING: Not Lost!

Pictured here is one Carl Tychsen. Carl has been associated with management of TURF SUPPLY COMPANY for 17 years. After 25 years in the AIR FORCE and supposed retirement, Carl joined Jack Kolb and his staff at Minneapolis Golf Club in 1967.

When TURF SUPPLY COMPANY was being formed, Carl gave his support and eventually joined as GOD FATHER to the fledgling company.

Suddenly during the opening of the 1984 fishing season he began missing long periods of work.

He has been seen around the Detroit Lakes area and recently sighted at the Forest Hills meeting in June.

Carl's presence has helped TURF SUPPLY COMPANY tremendously and helped establish a reputation of caring even when he would rather be on the Links himself. Saturdays and holidays were days when he showed great empathy for the Golf Course Superintendent, and would rather run deliveries for the men who keep the "Greens" than to play his favorite pastime—GOLF!

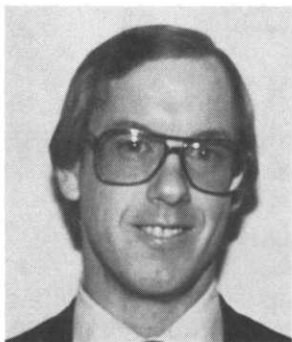
TURF SUPPLY COMPANY

2970 Dodd Road
St. Paul, MN 55121
(612) 454-3106

with an overall length of 106-in., this compact machine has a light print of only 8 psi, a desirable feature in turf work. Though a light-weight, construction is heavy duty, featuring a welded high-yield tubular steel chassis and a diamond-plate steel body and cargo box. The convenience of an automatic transmission, a steering wheel and simplified controls add to operator control.

For more rigorous and varied duty, the T2000 is powered by an 18 hp twin-cylinder air-cooled Onan gas engine, moving the three-wheel truck through a three-speed transmission at speeds up to 22 mph. Nearly six hours of continuous use are provided by one 8.5 gal. tank of gas. In addition to its 2000 lb. capacity, with 10-ply tires, including operator and passenger, a variety of optional attachments convert the T2000 into a multi-function system machine. With optional hydraulic system, PTO drive or high-low range charger, the T2000 can be a mini dump truck with tailgate, aerator, seeder, spreader, top dresser and several kinds of sprayers. A boom assembly and hand gun with 50-ft. hose can be added. The 124-in. long T2000 is built for heavy-duty use with tubular steel frame and diamond steel cargo box. Wide, six-ply standard tires provide a light print on turf.

EDITOR'S CORNER



by DOUG MAHAL
Chairman
Editorial Committee

Would it be redundant to say June was a little unusual this year? But then, this is Minnesota-land of no normals! I've heard no one wishing for rain. In fact, the contrary is more frequent in conversation. The moisture we've had has created some spectacularly lush, green turf on Minnesota's golf courses. I imagine the soil will dry up just in time for the

weather to turn hot and dry. Well, that's Minnesota and that's what M.G.C.S.A. superintendents' manage as well as any - change!

If you missed the June meeting at Forest Hills, you missed seeing a tremendous drainage system effort on the part of the club and Superintendent Lyle Olson. Without seeing, it's hard to imagine what 55,000 feet of drainage system looks like. Thanks, Lyle, for a great day and the visual experience.

Many M.G.C.S.A. members missed out on the first annual Green Industry Expo held at Anoka Vo-Tech, Rum River Campus. Next to the G.C.S.A.A. National Show, one is not likely to see as much turf and related equipment anywhere. I found it just a great day to get down to "brass tacks" with some of our distributors and actually get a "hands on" look at the equipment and supplies we and other related industries use. For those superintendents who did attend, it was a day for simple camaraderie, a function lost since beginning our noon meeting format. Plan to attend in '85.

Our July picnic will again be held at Baker Park on Lake Independence. The date is July 9. Arrangements Chairman Russ Adams has something special and new planned in the way of food. The price for your family will be a little higher but it will be well worth the expense. We all need a little "time out" about that time of year. Come on out and enjoy the day. Bring the family!

Many thanks to last month's HOLE NOTES contributors, Gerry Murphy and Glen Lentner. I've always said that our membership has a lot of good information to share and these fella's have proved it again. Good job!

Effective July 1, 1984 a new law involving golf courses goes into effect. I might suggest you all get a copy of the "Employee Right to Know" law and look it over. Basically, the law requires employers to post a list of all chemicals used on the golf course including fertilizer.

Have a great July and take a little time to get away and relax. See you on the 9th for a great day at the lake.

CHIPCO[®] 26019

**GOES THE DISTANCE
FOR LESS THAN 10¢ A DAY**

For long-lasting disease control — from the tee, across the fairway, and on the green — nothing's on a par with CHIPCO[®] 26019 turf fungicide.


It protects turf from the major diseases: Helminthosporium Leaf Spot and Melting Out, Dollar Spot, Brown Patch, Fusarium Patch and Blight, and Pink and Grey Snow Mold.

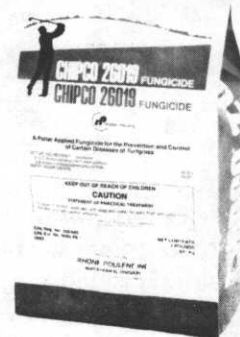
And the protection lasts longer. 21 days on fine turf. Up to 28 days on fairways. Which means it's not only effective. It's

cost-effective too — just 9¢ per 1,000 square feet per day of control.

For healthy turf and healthy savings, use CHIPCO 26019 fungicide. It goes the distance.

Rhône-Poulenc Inc., Agrochemical Division, Monmouth Junction, NJ

08852. 



Turf Fungicide
**CHIPCO[®]
26019**
EVERYTHING'S UNDER CONTROL.

THE UTILITY YOU'VE BEEN

THESE JACOBSEN TURF TRUCKS ARE

**• • • • THEY REALLY WANT
T1000 - QUICK, CONVENIENT and
GENTLE ON TURF**



Air Cooled 244cc - 2 cycle oil injected single cylinder engine for less servicing.
Torque converter provides infinite selection of ground speeds to 12 MPH - No clutch/shifting.
Welded high strength steel frame and diamond plate body for long life and 1000 lb capacity.
Easy service - conveniently located components - easy access to complete drive train.
Comfortable high back 2-seater with fingertip control.

CALL

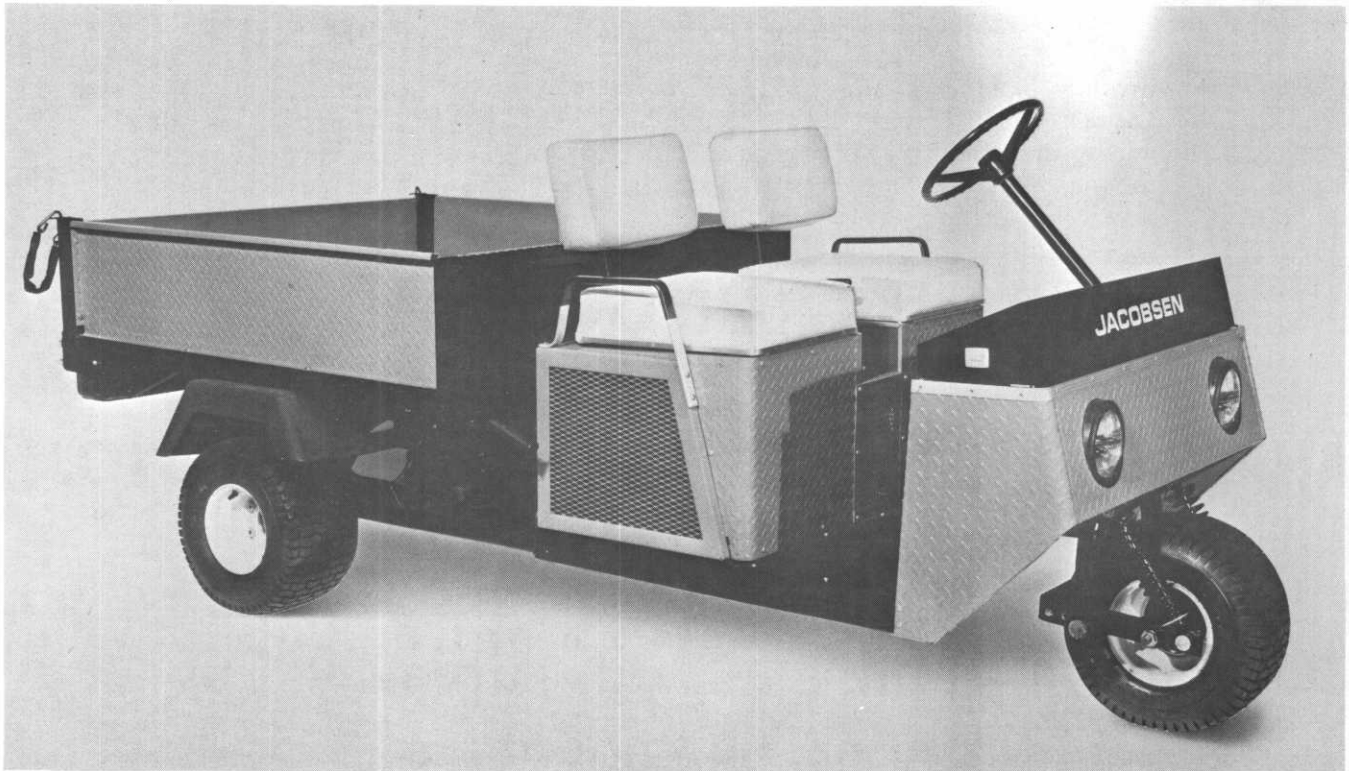


**FOR DETAIL SPECS
Local 484-8411**

TRUCKS WAITING FOR!

**COMFORTABLE, EFFICIENT & HUSKY
TO WORK!**

**T2000 - READY FOR 100 and 1 JOBS
DAY AND NIGHT**



18 H.P. Onan engine provides plenty of power for its 2000 lb capacity and makes for easy servicing.

3 - speed transmission provides ground speeds up to 22 MPH.

Fuel, amp, oil pressure gauges and hourmeter are standard.

Welded steel frame and diamond plate steel body for those years of service.

A wide variety of attachments convert this tough truck into a mini dumper, aerator, seeder, spreader, top dresser and sprayer.

- USE OUR TOLL FREE NUMBERS

MINN 800-592-9512 OTHER 800-328-9564

ASSOCIATES' CORNER

by RICHARD W. TAYLOR
Operations Manager
Golf Car Midwest

The Yamaha Motor Corporation entered the gas and electric U.S. golf car market in 1979. Golf Car Midwest started in the golf car business at the same time as a Distributor for Western Wisconsin, Minnesota, North Dakota and South Dakota. The Burnsville Sports Center, parent company of Golf Car Midwest, became a Yamaha products dealer in 1969. Business keeps growing each year because Kermit Severson, the owner of Burnsville Sports Center and Golf Car Midwest, believes in developing repeat business by offering parts availability and service to his customers. The original golf car facility had to be expanded to accommodate a larger parts and service department in 1982.

In 1981 we further expanded our golf car business by distributing golf cars in eastern Wisconsin and northern Michigan. This distributorship is located in Madison, Wisconsin.

The majority of our business is the sale of new reconditioned golf cars; however, in 1982 we developed a line of utility vehicles. Utility vehicles are being sold to golf courses, resorts, housing projects and car dealerships.

This next spring we plan to further expand our market by offering a commuter car for use around resort and retirement areas.

NEW MEMBER REPORT

The following new members were accepted in June: Orville Hurt, Class A, Marshall Golf Club; Blas Brual, Class A, Pipestone Country Club; Mike Brual, Class D, Pipestone Country Club; James Johnson, Class BII, Little Crow Country Club; David Lohn, Class BII, Little Crow Country Club; Rick Koring, Class BII, Sundance Golf Club. CLASSIFICATION CHANGE: James Krumwiede, Class B, Interlaken G.C., Fairmont.

FOR SALE

USED TORO PARKMASTERS

Contact: Gordon Miller
612/484-8411

'INTRODUCING'

MILORGANITE EXTRA PROFESSIONAL

•• 20-4-8 ••

1/3 MILORGANITE

20%	_____	10.9% w.i.n.
		9.1% urea
4%	_____	Phosphate
8%	_____	Sulfate of Potash
1%	_____	Iron

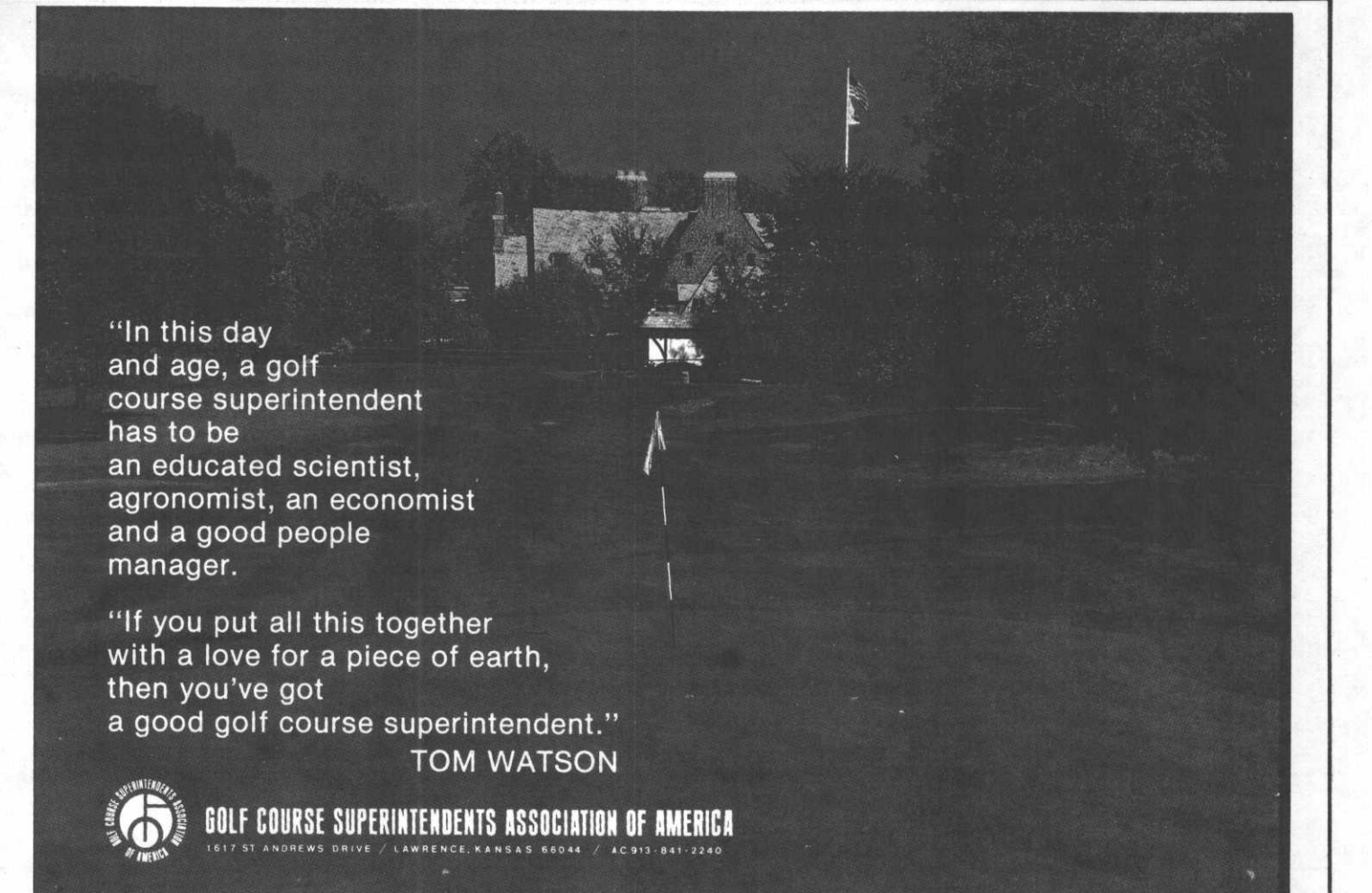
SLOW RELEASE

LANDSCAPE & TURF

307 E 6th St, Chaska, MN

612-448-3300

John Wiley call collect Milt Wiley



"In this day
and age, a golf
course superintendent
has to be
an educated scientist,
agronomist, an economist
and a good people
manager.

"If you put all this together
with a love for a piece of earth,
then you've got
a good golf course superintendent."

TOM WATSON



GOLF COURSE SUPERINTENDENTS ASSOCIATION OF AMERICA

1617 ST. ANDREWS DRIVE / LAWRENCE, KANSAS 66044 / AC 913-841-2240

**Keep
this card
handy.
It could
save you
time
and
money.**

Mike Redmond
Executive Technical Representative

ProTurf Division
O.M. Scott & Sons

8364 Kentucky Avenue North
Brooklyn Park, Minnesota 55445
Telephone: 612/425-1028

