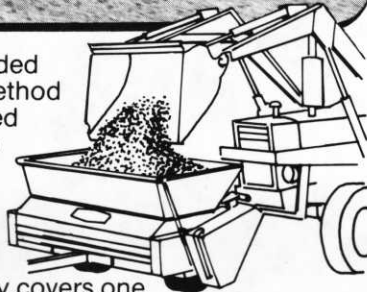


If filling your
top dresser takes
longer than application
...you need a
Mete-R-Matic II



Replace the outmoded man-and-shovel method with a bucket-loaded Mete-R-Matic II top dresser and its 3/4 cu. yd. hopper capacity.



- 3/4 cu. yd. of top dressing adequately covers one complete pass the length of a football field or an average size golf green.
- Unit pressure (psi) on turf is similar to self-propelled type top dressers.
- Mete-R-Matic II has a five-foot wide spread with consistent, even application.
- Motorless Mete-R-Matic II features a simple, pin hitch hookup.



Self-propelled Mete-R-Matic Top Dresser ... the original, proven method of conveyor and rotating brush.

MINNESOTA TORO, INC.

14900 Twenty First Avenue North Minneapolis, Minnesota 55441
Phone (612) 475-2200

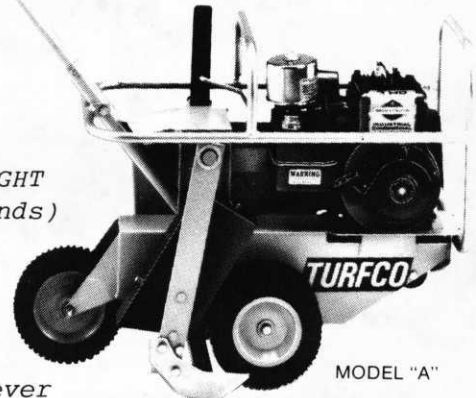
TURFCO Sod Master

All-new, self-propelled
Turf Cutter

LIGHT WEIGHT
(140 Pounds)

SIMPLE CONTROL
Single lever
controls blade & traction

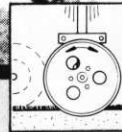
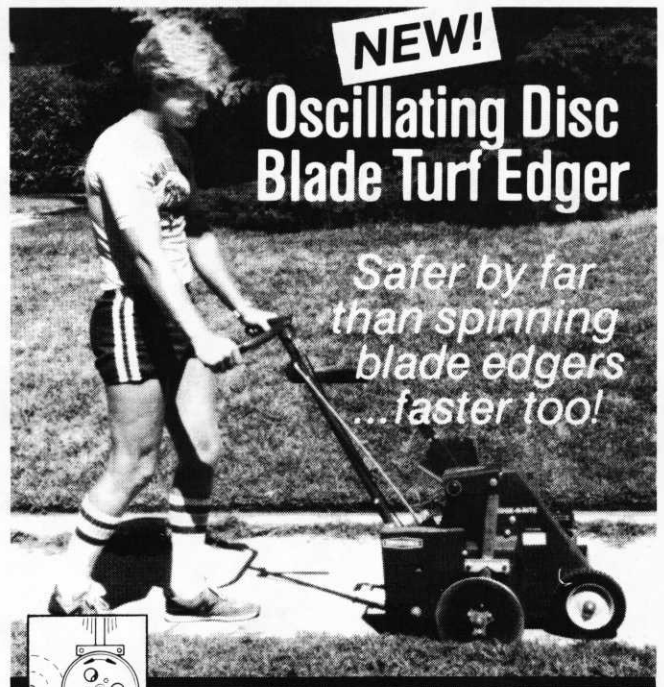
Cuts 12" wide sod at up to 75 fpm



MODEL "A"

NEW!
**Oscillating Disc
Blade Turf Edger**

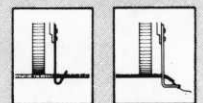
*Safer by far
than spinning
blade edgers
...faster too!*



MODEL N EDGE-R-RITE

No spinning blade to throw debris. Oscillating disc blade cuts on forward and backward strokes. Cleanly slices turf edges.

Optional right angle and V-blades



HOLE NOTES

OFFICIAL PUBLICATION OF THE MINNESOTA GOLF COURSE SUPERINTENDENTS' ASSOCIATION

EDITOR: WARREN J. REBHOLZ
6550 YORK AVENUE SOUTH
SUITE 402
EDINA, MINNESOTA 55435
PHONE: 612/927-4643

ASSOCIATE EDITOR: GUY R. GREEN

EDITORIAL COMMITTEE CHAIRMAN:
DOUGLAS MAHAL

M.G.C.S.A. BOARD OF DIRECTORS FOR 1984:

OFFICERS

PRESIDENT.....DONAVAN LINDBLAD
VICE-PRESIDENT....DALE CALDWELL
SECRETARY.....KERRY GLADER
TREASURER.....MARK SMITH
EX-OFFICIO.....JOHN NYLUND

DIRECTORS

RUSSELL ADAMS	LYLE OLSON
SCOTT HOFFMAN	KEITH SCOTT
DOUGLAS MAHAL	JAMES WODASH

THE FOLLOWING IS A LIST OF OFFICE TELEPHONE NUMBERS FOR THE ENTIRE BOARD: AREA CODE 612.

DONAVAN LINDBLAD.....755-2140
DALE CALDWELL.....646-7125
KERRY GLADER.....253-5250
MARK SMITH.....544-4474
JOHN NYLUND.....941-5117
RUSSELL ADAMS.....373-1647
SCOTT HOFFMAN.....218/829-2811
DOUGLAS MAHAL.....929-1661
LYLE OLSON.....464-3097
KEITH SCOTT.....938-6900
JAMES WODASH.....235-8233

EMPLOYMENT OPPORTUNITY

FULL TIME GROUNDS POSITION. MUST HAVE MECHANICAL APTITUDE AND KNOWLEDGE OF FERTILIZERS AND PESTICIDES. EXPERIENCE WITH AUTOMATIC IRRIGATION SYSTEMS DESIRABLE. RESUME DEADLINE: APRIL 16.

CONTACT: LARRY MUELLER
MINNESOTA VALLEY CLUB
6300 AUTO CLUB ROAD
BLOOMINGTON, MINN. 55438
PHONE: 612/884-8733



FROM THE PRESIDENT'S DESK

DON LINDBLAD

The March Mini Conference was very well attended and probably a record breaker. I hope everyone who had questions got them answered. We surely had all the right people to answer any of the wide variety of questions that came up.

I believe Keith Scott and Mark Smith are progressing toward greater involvement by this association and other turf related associations in having an equipment display show sometime in June.

Please be aware that the Minnesota Golf Association has just published its new list of course ratings that now carry a slope number as well as the regular course ratings. The slope is the evaluation of the difficulty of a course as it affects the higher handicapper. This new wrinkle will allow the higher handicapper to increase his handicap on a difficult course but, alas, on the other side of the coin, he must decrease his handicap on easier courses. The average slope for men is 113 and for ladies 100. Since the accuracy of course rating depends so much on yardage, the superintendent must make sure by correct rotation of tee markers that the course plays the distance it was rated from at all times.

What I like to call our "spring opening meeting" is being held at Owatonna Country Club this year. I know Randy and his staff will be ready because he knows so many of us are more than ready to start playing some golf along with the fine educational subjects that are given to us at each one of our monthly meetings. Hope to see an even bigger turn out at Owatonna than we had at last year's April meeting in Mankato.

"THE VALLEY'S" NEW SHOP



by LARRY D. MUELLER
SUPERINTENDENT
MINNESOTA VALLEY CLUB

Minnesota Valley Club was purchased by the International Painter's Union Pension Fund in 1980. The union has entered into a joint venture with Pentom Co. of Bloomington to build 360 condominium units on the property in the form of six buildings each containing 60 units. They will do this and still maintain as 18-Hole golf course. Proposed golf course design changes were made by Arnold Palmer Design Co. with Ed Seay, architect.

After operating for many years from an old barn that had been converted to a workshop, in March of 1982 I was informed the first condominium complex would be constructed on that site. Construction would begin in the fall. I was to make plans for a new shop.

I began by talking to my assistant, mechanic and crew to see what features they would like in a new building and then proceeded to visit some of the area's superintendents to see their maintenance shops. They were very helpful in sharing their ideas and experiences.

We then worked out the square footage needed for storage and workshop and came up with a total requirement of 12,000 square feet. A 60 x 200 foot building gave us the best floor plan and fit into the site which had already been determined by the golf course architect.

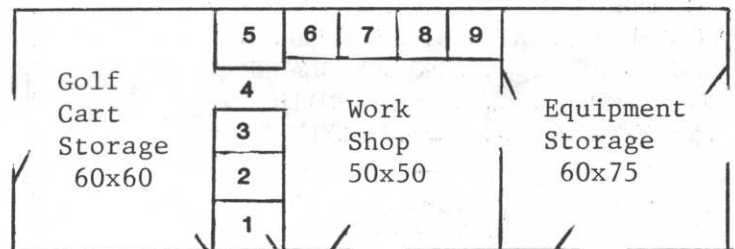
My wife became involved at this point, drawing out the floor plan for presentation to the general contractor.

Pentom, the project developer, automatically became general contractor and that worked very well for us.

City codes controlled the materials used in construction. Because of the lack of city water at the site, no wood was allowed. It must be a fireproof building.

Construction began right after Thanksgiving and all the cement block was laid by Christmas. The weather was mild and the contractor missed only two days during that period because of cold.

The shop is constructed of 12 inch cement block with a steel truss flat roof, steel doors and steel studs where there are room partitions. It is divided into three separate sections. Ceilings are 16 feet high.



- 1 Supt's. Office
- 2,3 Bathrooms
- 4 Wash Rack
- 5 Lunch Room
- 6 Ass't-Mech Office
- 7 Parts-Tool Room
- 8 Chemicals
- 9 Paints

The west section is 60 x 60 feet and designed for golf cart storage in the winter and for greens covers, fertilizer, topdressing and miscellaneous equipment in the summer. It comfortably holds 70 golf carts. The exterior overhead door is 12 x 14 feet. There are two service doors.

The east section is 60 x 75 feet in size and used for golf course equipment storage. This area has two 12 x 14 foot exterior overhead doors with service doors next to them.

The middle section of the building, 60 x 65 feet in size, is the only section that is heated. In here is a 50 x 50 foot work shop area surrounded on two sides by offices, bathrooms storerooms and lunchroom. The workshop has a 12 x 10 foot exterior overhead door and a 12 x 14 foot overhead door to the equipment storage area. Both of these doors are insulated.

continued on Page 5

CHIPCO[®] 26019

GOES THE DISTANCE
FOR LESS THAN 10¢ A DAY

For long-lasting disease control—from the tee, across the fairway, and on the green—nothing's on a par with CHIPCO[®] 26019 turf fungicide.

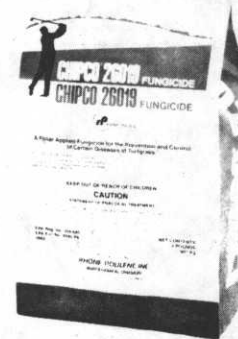
It protects turf from the major diseases: Helminthosporium Leaf Spot and Melting Out, Dollar Spot, Brown Patch, Fusarium Patch and Blight, and Pink and Grey Snow Mold.

And the protection lasts longer. 21 days on fine turf. Up to 28 days on fairways. Which means it's not only effective. It's

cost-effective too—just 9¢ per 1,000 square feet per day of control.

For healthy turf and healthy savings, use CHIPCO 26019 fungicide. It goes the distance.

Rhône-Poulenc Inc., Agrochemical Division, Monmouth Junction, NJ 08852. 



Turf Fungicide
CHIPCO[®]
26019
EVERYTHING'S UNDER CONTROL.

Off this main shop area is a wash rack, 15 x 15 feet. This area has hot and cold water as well as a floor drain that continues the entire length of the building. This also is the driveway from the shop into the west storage area serviced by an insulated 12 x 12 foot overhead door.

The workshop and washrack area has gas radiant heat which is very comfortable, heating the floor and objects in the room. It is also more efficient than forced air heat and has a faster recovery after overhead doors are opened during cold weather.

Off the shop area are a parts and tool room, a chemical storage room and a paint storage room.

The lunch room is 15 x 15 feet. In here we have a cabinet with double sink, refrigerator and microwave oven. It is also our conference-meeting room. I wish I had made it a little larger as it gets a little crowded in the summer.

There are two offices, each one with a window looking into the main work shop.

My assistant and mechanic share an office where they can keep all equipment records and parts books. They also have their own phone line which works out very well.

There are two bathrooms, one with a shower.

All of these rooms off the work shop area are heated by a forced air gas furnace with underground duct work.

Since the offices and storerooms have 8 foot ceilings a mezzanine storage area over them is nice for items that are seldom used.

Lighting in the work area and adjacent rooms is fluorescent. Conventional lighting was used in the east and west ends of the building.

Each section has its own ventilation system.

Garage door openers were installed on the three insulated overhead doors and a burglar alarm system was installed throughout the building because of our somewhat remote location.

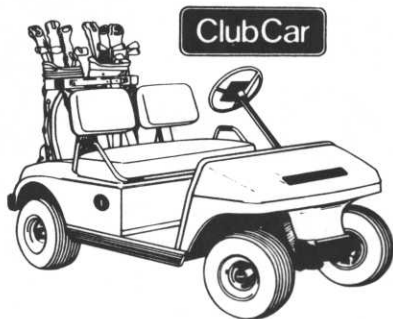
We have blacktop drives and parking around the building. There are steel guard posts by each exterior overhead door. Our gas pumps are in easy view of the mechanic and the superintendent's office.

The building was completed and approved for occupancy the first week of April 1983.

We think our building has a good traffic flow with easy access to all areas and are happy with the way it turned out. Anyone interested in seeing it is welcome to stop in for a visit and tour.

FOR SALE

1. 1965 Toro Parkmaster equipped with 1968 Toro gang mowers. Very good condition. Engine completely rebuilt in 1982.
2. 1974 Cushman topdresser. Like new.
3. Old Ryan sodcutter.
4. 1970 Turf Vac.
5. 1972 Toro Sand Pro
6. WISH TO PURCHASE USED SPRAY HAWK
MARK SMITH, MINNEAPOLIS GOLF CLUB
(612) 544-4474



THE CLUB CAR DIFFERENCE

" QUALITY "

1984 GAS AND ELECTRIC

Egeberg's Golf Cars

2526 24TH AVENUE SOUTH
MINNEAPOLIS, MINNESOTA 55406

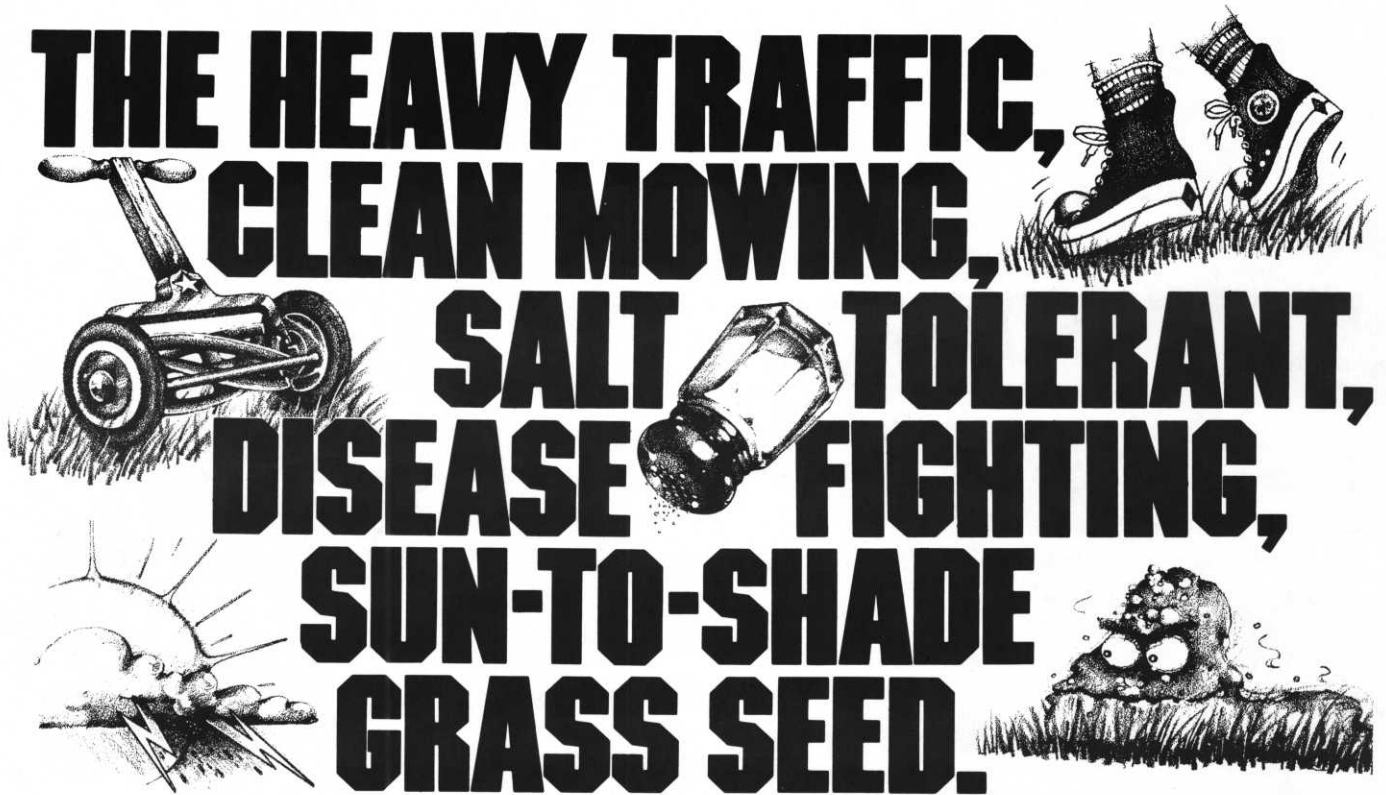
COLUMBIA

HARLEY-DAVIDSON

ClubCar

NORTHRUP KING PRESENTS

THE HEAVY TRAFFIC, CLEAN MOWING, SALT TOLERANT, DISEASE FIGHTING, SUN-TO-SHADE GRASS SEED.



No one grass seed combines every characteristic for every type of turf. That's why Northrup King research has developed a complete line of Medalist Turf Products to meet specialized professional needs.

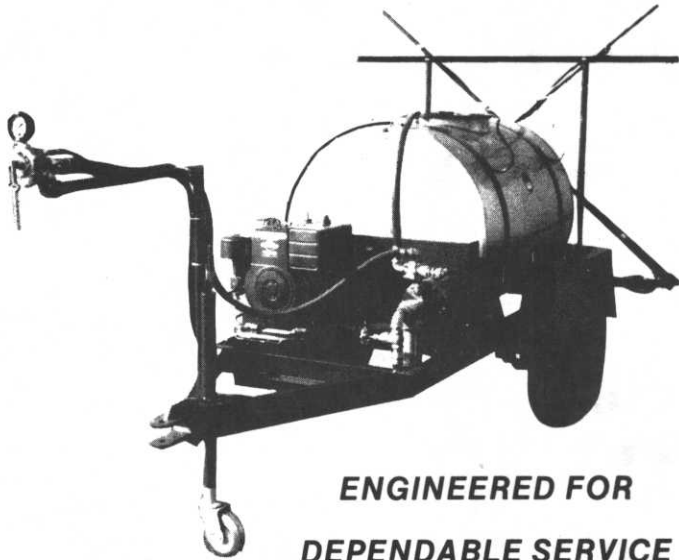
MEDALIST TURF PRODUCT	MAJOR AREAS OF USE	SPECIAL FEATURES
Athletic Pro Mix	High maintenance athletic turf	Both are well suited for new seeding or overseeding. Fast establishing, excellent traffic tolerance, and rapid recovery. Provides good footing.
Athletic Pro II Mix	Low to moderate maintenance athletic turf.	
Boulevard Mix	Any area with high pH (roadsides, sidewalks, boulevards, beachfronts, etc.)	Contains both "Fults" <i>Puccinellia distans</i> and Dawson red fescue which thrive on high saline or alkaline soils. Performs at low to high fertility levels.
Landscape Pro Mix	School grounds, cemeteries, golf course roughs, lawns	Fast establishing. Adapts to broad range of conditions and management levels. Low to moderate fertility requirements.
Overseeder II Mix	Fairways, tees, athletic fields	Fast establishing, traffic tolerant, disease resistant, penetrates compacted soil.
Medalist North Mix	Fairways, tees, cart paths, wear areas	Long term quality in high traffic areas. Clean mowing and disease tolerant.
Premium Sod Blend	Commercial sod producers	Fast establishing, exceptional dark green color, shade tolerant, superior disease resistance.
Special Park Mix	Parks, commercial developments, lawns	Low fertility tolerance, shade tolerant, adapts to wide range of soil types.

Ask your Northrup King distributor about the Medalist Turf Products for your needs. Or write Northrup King Medalist Turf Products, P.O. Box 959, Minneapolis, MN 55440.



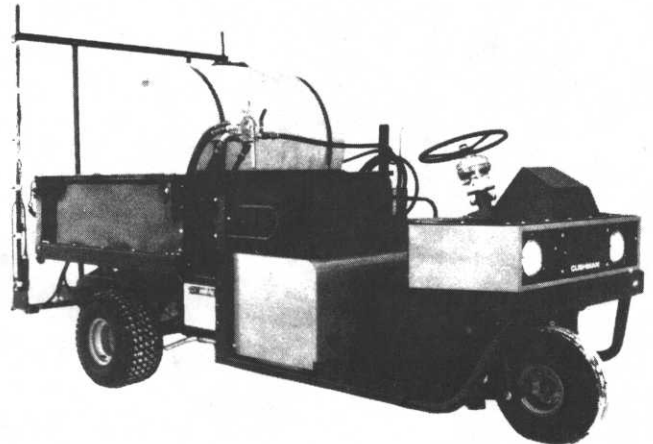


TURF SPRAYER



**ENGINEERED FOR
DEPENDABLE SERVICE**

Model K10-11-200GT



Use this skid mounted sprayer to greatly increase the versatility of your Cushman type utility vehicle! Minnesota Wanner quality and these features make a great combination:

- 110 gallon polyethylene tank on skid mounted frame which attaches to vehicle cross member for easy hookup.
- Rugged 75 G.P.M. capacity centrifugal pump powered by P.T.O.
- Large volume jet agitator keeps chemicals thoroughly mixed.

Optional equipment available:

- 15 foot three section boom to cover large areas. Boom equipped with 10" nozzle spacing, two sets of tips and check strainers. Boom has breakaway hinges and folds vertical for easy transportation. Boom section mounts in sleeve on tank skid for quick installation and removal. "Tee Valve" gives complete control of three section boom, allowing operator to choose any combination of boom sections for optimum coverage.
- Trigger type gunjet with 50 ft. of hose can deliver fog or a straight stream to reach hard to get areas.

Minnesota Wanner manufactures a complete line of quality trailer and skid mounted sprayers, turf care accessories, including lawn carts and root feeder needles, as well as custom designed units.

Please Call Or Write For More Information.

SOLD AND SERVICED BY

CUSHMAN MOTOR CO., INC.

2909 East Franklin Avenue • Minneapolis, MN 55406 • (612) 333-3487

THE *Refined* BASICS

TIMELESS PRODUCTS

Generations ago, superintendents drove to the oceans, loaded their lorries with seaweeds that had washed to shore and carried them back to their courses for composting and topdressing. Others drove to local pasture lands and stockyards for natural manures to use as fertilizer.

The pioneers in golf course grooming couldn't have known that seaweeds contain unique hormones that stimulate cell division and delay senescence in turfgrasses. They simply knew that areas treated with sea plant compost seemed healthier and more resistant to stress. Neither could they have known that pasture manures contain unique amino acids that are beneficial to turf. They just observed that turf fertilized with these materials was noticeably heartier, denser and greener.

TODAY'S TECHNOLOGY REFINING THE BASICS

Today, researchers are identifying the key constituents responsible for the many benefits associated with these natural materials. And sophisticated processing technologies have been developed to extract and preserve these beneficial constituents making possible a new generation of safe, natural, highly effective products.

Each of our products has two things in common. They meet the exacting standards of consistent mesh size and gallon-to-gallon consistency demanded by today's turf professionals. And in their natural state they have proven their effectiveness over, literally, centuries of use.



PanaSeá . . . foliar spray

- BIGGER ROOT SYSTEMS
- BETTER STRESS TOLERANCE
- SUPERIOR QUALITY AND COLOR
- FASTER SEED GERMINATION

PanaSeá liquified sea plant extract contains 100 ppm cytokinin (a natural hormone) PLUS 70 chelated trace elements. PanaSeá is used on world class golf courses throughout North America.

farmura . . . liquid fertilizer



Registered Trademark

- PROMOTES SLOW EVEN GROWTH
- DEVELOPS DENSE HEARTY TURF
- INCREASES SOIL FERTILITY

Farmura complements any fertilization program. It's an herbally reodorized, liquified pasture manure that's rich in micronutrients and amino acids. Farmura is ideal for "lean and mean" low N fertility programs. Farmura is used on most of the top courses throughout the British Isles including Birkdale — site of the 1983 British Open.



SAND-AID . . . soil conditioner

- REDUCES COMPACTION
- INCREASES MOISTURE & NUTRIENT RETENTION IN SAND

Sand-Aid granular sea plant meal contains a carbohydrate unique to sea plants. It's electrochemical action neutralizes the negative charge on clay particles helping reduce compaction. In sand, it develops into a porous aggregate which reduces water loss.

Distributed in Minnesota By:

**TURF SUPPLY COMPANY
(612) 454-3106**

For More Information Contact:

**Emerald Isle, Ltd.
2153 Newport Road
Ann Arbor, MI 48103
(313) 662-2727**

ASSOCIATES' CORNER

FROM AIRCRAFT TO TOP DRESSERS

By Scott Kaercher
Turfco Mfg. Inc.

Turfco Mfg. Inc. is the result of a chain of events that started during the mid 1920's when Frank Ditter designed and built an airplane in a North Minneapolis garage. He called this business adventure Federal Aircraft Works. Upon completion this airplane was taken to Wold-Chamberlain Speedway for its initial test flights. The tests were conducted by Speed Holman. The plane was very advanced for the time. It was the first aircraft in this area with an enclosed cockpit. Unfortunately, one night a tornado swept through the Speedway and destroyed many of the airplanes stored there, including "Federal Aircraft 1".

After this financial setback, and at the request of the other pilots, Frank started manufacturing skis for landing aircraft on snow. This phase of the business sus-

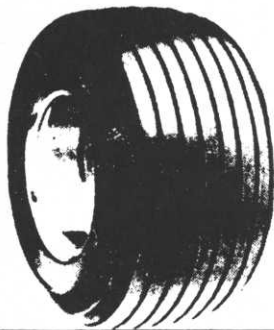
tained itself until the end of the depression when Frank moved the company to its present location at 3456 N. Washington. During World War II Federal manufactured many items for the war effort, including engine hoists for servicing aircraft. The most notable accomplishment of Federal Aircraft Works was the design and manufacture of the skis for the aircraft used by Admiral Byrd for the North and South Pole Expeditions. One of Byrd's "R4D" Aircraft is in the collection at the Naval Air Museum in Pensacola, Florida. The skis are still intact.

In 1953, Frank Ditter decided to diversify Federal Aircraft into another market by collaborating with Olaf Rogneby on the design and manufacture of a sodcutter. The "Professional" sodcutter was the first product of the SodMaster Division. Later, in cooperation with Art Cohrs and Bennett Larson of the Minneapolis Golf Club, SodMaster introduced the first Mete-R-Matic topdresser (1961). Between 1961 and 1964, SodMaster also introduced the Bantam Sodcutter, the Edge-R-Rite Sandtrap Edger, and the Pipe Piper Oscillatory Pipe and Wire Plows.

continued on Page 11

GOLF CAR MIDWEST

Parts and Service Specials !!



NEW!!

18x8.50-8

**MOUNTED ON
4 HOLE WHEEL!**

\$ 27.95

Harley-Davidson

TOP END - ENGINE REBUILD SPECIAL

PARTS & LABOR
NOW ONLY..... **\$35.95**

INCLUDES: Boring, New Piston, Pin,
Rings and Clips!

GOLF CAR BATTERIES

12 VOLT, MAINTENANCE FREE BATTERIES FOR
YAMAHA, E-Z-GO AND HARLEYS, NOW ONLY..... **\$26.95**

6 VOLT, H.D. 220 ELECTRIC GOLF CAR BATTERIES
FOR MOST MODELS, NOW ONLY..... **\$49.95**



GOLF CAR MIDWEST

3350 West Highway 13
Burnsville, Minnesota 55337
612/890-5541

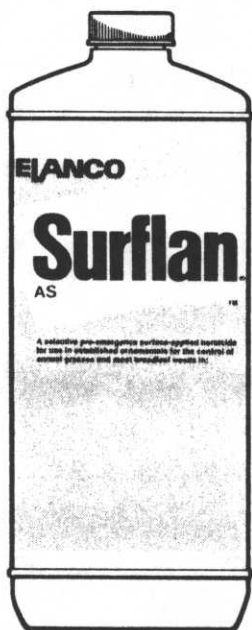
CALL TOLL FREE 800-328-6665

IN MINNESOTA 800-352-2779

TURF SUPPLY COMPANY

Asks You To Try These Effective Products

The most complete line of Turf Products
For complete Turf Management
Under One Company



Tired of Pulling Weeds?

Surflan stops weeds from ruining
the appearance of your
ornamental plantings.

Wipe out dollar spot
before dollar spot
wipes out your greens.
Daconil 2787[®] fungicide.



TURF SUPPLY COMPANY

2970 Dodd Road
St. Paul, MN 55121
(612) 454-3106