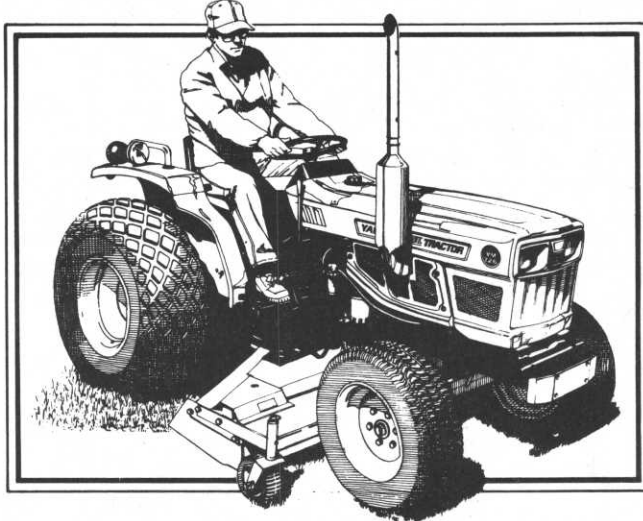


# YANMAR

## Turf Care



### Power Shift & Live 2-Speed PTO Means Smooth Cutting

Grounds maintenance, professional landscapers, golf courses, homeowners...Yanmar Diesel Tractors make a world of difference in turf care.

- Column mounted shuttle power shift transmission lets you shift on the go without clutching. Shift up for speed, down for power, lets you adjust speeds to match conditions at the touch of the shift lever.
- Live 2-speed PTO (540/1000 rpm) keeps your mower operating at constant speeds, even if you slow down or stop. You get smooth, even work right from the start.
- Choose from 18, 22, 27, or 33 HP diesel models.
- 42" to 72" cutting width.

Tractors and Implements  
A World of Difference



Free  
Demonstration  
on  
Your Yard

Leasing

Factory  
Trained  
Mechanics

We  
Service What  
We Sell

Free  
Pick-Up and  
Delivery

We  
Stock  
Parts

## KROMER CO.

MOUND, MINNESOTA

612/472-4167

HOLE NOTES, official publication of the  
MINNESOTA GOLF COURSE SUPERINTENDENTS'  
ASSOCIATION.

EDITOR - WARREN J. REBHOLZ  
6550 YORK AVENUE SOUTH  
SUITE 301  
EDINA, MINNESOTA 55435  
PHONE: 612/927-4643

ASSOCIATE EDITOR - THOMAS P. MAGNE

MGCSA BOARD OF DIRECTORS FOR 1981

OFFICERS

PRESIDENT - DENNIS HENDRICKSON  
VICE-PRESIDENT - LARRY D. MUELLER  
SECRETARY - STEVEN YOUNG  
TREASURER - JOHN NYLUND  
EX-OFFICIO - RICHARD DESPLINTER

DIRECTORS

DALE CALDWELL      KERRY GLADER  
NATHAN DUNN      ROGER KISCH  
IRWIN FULLER, JR.      DONAVAN LINDBLAD

THE FOLLOWING IS A LIST OF OFFICE TELEPHONE  
NUMBERS FOR THE ENTIRE BOARD: AREA CODE 612.

DENNIS HENDRICKSON....435-7759  
LARRY MUELLER.....884-1074  
STEVEN YOUNG.....473-7418  
JOHN NYLUND.....941-5117  
DICK DESPLINTER.....537-1149  
DALE CALDWELL.....646-7125  
NATHAN DUNN.....448-3626  
IRWIN FULLER.....507/388-2546  
KERRY GLADER.....253-5250  
ROGER KISCH.....451-1666  
DON LINDBLAD.....755-2140

The best in turf supplies —  
LESCO 100% Sulfur-Coated Fertilizers,  
golf course accessories, chemicals including

**LESCOSAN**

A highly effective pre-emergence  
crabgrass and poa annua control

(800)  
321-5325  
NATIONWIDE

(800)  
362-7413  
IN OHIO

LAKESHORE EQUIPMENT & SUPPLY CO.  
"Home of LESCO Products"  
300 South Abbe, Elyria, OH 44035



**FROM THE  
PRESIDENT'S  
DESK**

**DENNIS  
HENDRICKSON**

Another golf season draws to a close in Minnesota and we all turn our thoughts to winter and the upcoming 1982 season with perhaps a few days of vacation in back of our minds. The last M.G.C.S.A. event of the year is the Annual Conference on December 2, 3 and 4 at the Sheraton Inn Northwest. This year's conference looks like it will be an excellent one. One very important step has been made this year that has been in the works for a long time. Nick Dunn has been working very hard to make it possible for our conference to satisfy the state requirements for pesticide recertification. Attendance at the Wednesday session will now satisfy those requirements. We all owe Nick Dunn a "thank you" for putting this together for us. This year's conference has many highlights so you will find it worth your time and money to attend.

The October meeting at the Minneapolis Golf Club was well attended. Everyone had an enjoyable time socializing even though the golfing got a little wet. Thanks to Host Superintendent Mark Smith and the Minneapolis Golf Club for a great day.

A reminder to those of you who have a change of address during the winter months: IF YOU WOULD LIKE TO RECEIVE YOUR MAIL, PLEASE NOTIFY THE M.G.C.S.A. OFFICE SO PROPER CHANGES CAN BE MADE.

Good luck in putting your golf course to bed for the winter. I hope to see you all at the Sheraton Inn Northwest.

**CARD TRICK**

He takes a seven, writes down six —  
This clever golfing hero.  
Someday he'll make a hole-in-one.  
And mark his scorecard zero.

— JWB

## Your Office – A Reflection Of Your Abilities

When your green chairman drops by your office for an unexpected chat, what does he see? Is your desk piled to eyebrow level with papers, broken parts and unsorted clutter? Do you have to search for fifteen minutes to find the magazine article you need to show him? Does the dust on your filing cabinet excite his allergies? Like it or not, the condition and appearance of your office reflect on your abilities as a manager. Granted, no one ever claimed that a golf course could be completely managed from behind a desk, and most superintendents' offices are not exactly accessible to the general public. It's also true that many superintendents' offices, particularly at older clubs, are carved from buildings that originally housed everything from polo ponies to plows, and almost all are in the maintenance facility, which has a near-magical attraction for dust, dirt and grease. However, the degree of order in your office and, by extension, your entire facility, reflects the degree of organization you bring to your work. You can say it's all right because you know where everything is, but what if you're not there? Does everything stop while someone tracks you down? Even if you're limited on space and your office is at the bottom of the budgetary priorities list, there are some things you can do to bring order from chaos. Here are some suggestions.

A place for everything and everything in its place. This time-worn adage still has merit. Filing cabinets, baskets and blueprint organizers are excellent investments.

Develop a system. There is no best way to develop a filing system. The only important criterion is whether it works in your operation. It does, however, have to be based on some sort of logic.

Develop good organizational habits. Work at putting things away when you have finished with them. Develop a system for moving things from the top of your desk into some sort of permanent home and stick to it.

Try to work out some sort of schedule. It's right and proper that cleaning up your office should take a back seat to dealing with on-course emergencies and important maintenance procedures. That's your job. But take a moment at the end of the day or even at the end of the week to police your office area.

REPRINT GCSAA FORE FRONT

## Fast, efficient maintenance and repair of well pumps.

Bergerson-Caswell is well equipped, not only for well drilling, but maintenance, too. If you have a reduced flow from an aging pump, or if you are starting to pump sand or other foreign materials, call us for an analysis of repairs. We can put new life into existing wells, quickly and economically.

**Call (612) 479-3121**

**Bergerson-Caswell, Inc.**

5115 Industrial Street • Maple Plain, MN 55359

Well pumps are quickly and easily pulled for inspection and repair by 10T Smeal Hydraulic Pulling Rigs—among the many special units in the Bergerson-Caswell fleet operating in the Upper Midwest.



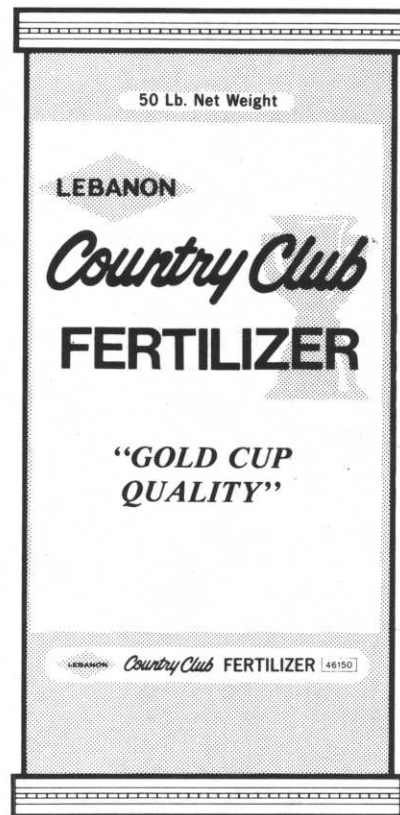
Announcing . . .

# COUNTRY CLUB TURF PRODUCTS

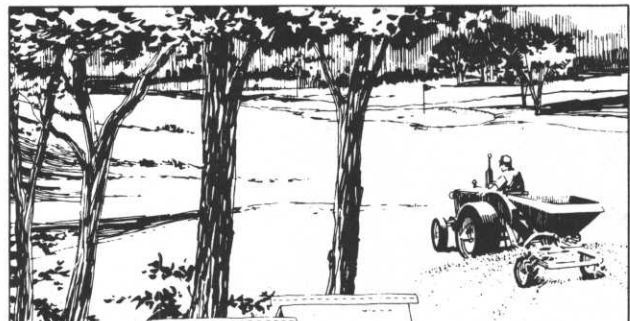


has been added to  
**TURF SUPPLY COMPANY'S**

ever-growing family of fine products.



**Wipe out dollar spot before  
dollar spot wipes out your  
greens. Daconil 2787® fungicide.**



IBDU\* (31-0-0) and PAR EX\* fertilizers with IBDU are custom formulated for high maintenance, high quality turfgrass. Check with your local PAR EX territory manager or distributor for other available grades.

**par ex**  
PROFESSIONAL PRODUCTS

## TURF SUPPLY COMPANY

• Chemicals • Fungicides • Turf Supplies  
2970 Dodd Road St. Paul, Minnesota 55121  
(612) 454-3106



# "Managing Change" - National Conference Theme

Change is a fact of life for golf course superintendents. They constantly face new challenges to their ability to deliver a quality product with ever decreasing resources. As we move further into the 1980's, shortages of energy, water and other resources will undoubtedly worsen while golf's demands increase.

These are challenges GCSAA is prepared to face. The Association's program for its 1981 Turfgrass Conference and Show January 31-February 5 in New Orleans will be aimed at helping its members deal with the problems they may face in the not-too-distant future.

Under the banner "Managing Change", GCSAA will offer eleven educational presentations on topics ranging from finances to tree management to golf carts. Highlighting the program will be two, three-hour symposiums on water and the challenges it will offer in the coming years. Panels of nationally recognized experts will attack the problem from several angles, providing a wide base of information to help superintendents plan for the future.

These sessions are in addition to the USGA Green Section's Educational Conference which will occupy an entire day of the conference week. Activities also will include an expanded spouse program, the Turfgrass Trade show, GCSAA's annual meeting, social functions and a tour of the Louisiana Superdome.

A complete conference brochure and registration forms will be mailed to all GCSAA members in late October. Make your plans now to attend what may well be the most important GCSAA conference in history.

Reprint G.C.S.A.A. FORE FRONT

## SALE-SALE-SALE USED EQUIPMENT REBUILT AND PAINTED

Jacobsen-F-133 5-gang Hydrostatic Drive Dual Tires (like new)	\$3500.00
Jacobsen Trap Rake (like new)	2295.00
Howard 82" Rotary Mower Hydro Drive	3250.00
Howard 72" Rotary Mower Hydro Drive	2995.00
Howard 60" Rotary Mower Hydro Drive	2650.00
Howard 60" Rotary Mower-12 1/2 H.P. 2 speed transaxle	1995.00
Yazoo 60" Rotary 2-speed trans- axle - 12 1/2 H.P.	1695.00
Heckendorn 88" Rotary Mower	3450.00
National 30" Reel Mower	395.00
Smithco "Little Beaver" Self- propelled spiker with hydraulic lift	2285.00
Hahn AS-3 Aeri-Spiker	295.00
Davis 4 wheel electric golf car (New)	1895.00

## KROMER CO

3455 County Road 44, Mound, Mn. 55364  
TELEPHONE 612-472-4167

## Jim Lindblad Nominated For National Director

The GCSAA Nominating Committee has announced the official slate of candidates for the 1982 annual election.

PRESIDENT:	James A. Wyllie, CGCS
VICE-PRESIDENT:	Robert W. Osterman, CGCS James W. Timmerman, CGCS
DIRECTOR:	Paul Boizelle, CGCS William J. Emerson John P. Hayden, CGCS James E. Lindblad, CGCS Richard Slivinski, CGCS

The M.G.C.S.A. congratulates Jim on his nomination and pledges to work very hard at the national conference to secure his election to the Board of Directors.



# Toro<sup>®</sup> Professionals course.

**HTM-175™**



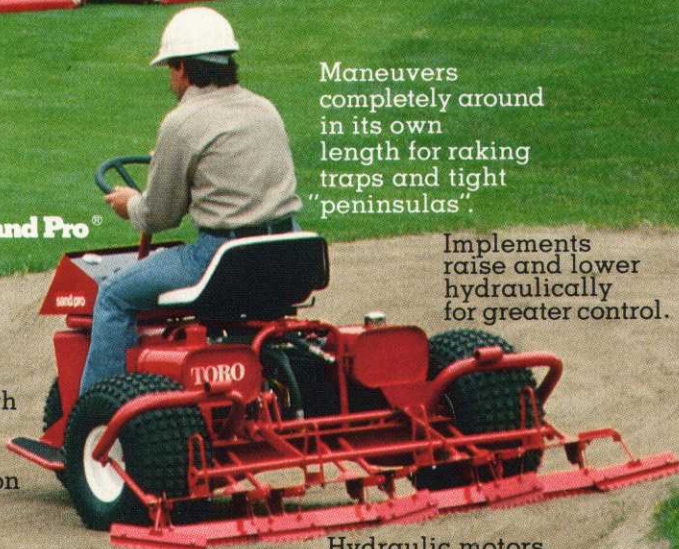
Reliable 4 cylinder diesel engine with 236 cubes of lugging power for hills and heavy cutting.

Simpler to drive with automotive steering out front. Minimizes operator training.

Exclusive reel couplings mean more freedom to follow ground contour for finest quality cut.

Gentler on the grass with custom designed reel units that weigh 110 lbs. less than our wheel drive gangs.

**Sand Pro<sup>®</sup>**



Special ATV high flotation tires only 4 psi for excellent traction in sand.

Maneuvers completely around in its own length for raking traps and tight "peninsulas".

Implements raise and lower hydraulically for greater control.

Hydraulic motors on all wheels. No gears or belts.

## TOLL FREE CALLS

Minn. 1-800-362-3665 N.D., S.D. & Wisc. 1-800-328-3558

## END OF THE SEASON SPECIALS

## ON ALL NEW, USED & DEMO'S.

## MINNESOTA TORO, INC.

14900 Twenty First Avenue North Minneapolis, Minnesota 55441

The only trap rake with total hydraulic power. Plus the lower upkeep, longer life and superior performance that go with it.

Finally, the ultimate in precision. Our HTM-175™.

Its superbly balanced cutting units can match the needs of your course with a smooth, exacting cut down to 3/8 of an inch.

Want to know more?  
Call your Toro distributor. He's a professional, too.



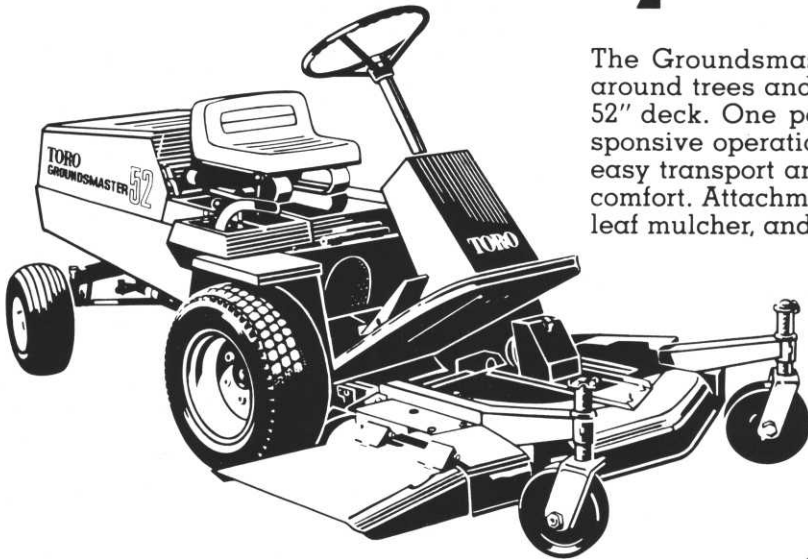
**The Professionals™**

The Toro Company, 8111 Lyndale Ave. So.,  
Minneapolis, MN 55420



# GET YOUR GROUNDS - MASTERED SUMMER, WINTER, SPRING, OR FALL THE TORO GROUNDSMASTERS CAN DO IT ALL

## Groundsmaster 52<sup>®</sup> The Professional for maneuverability.



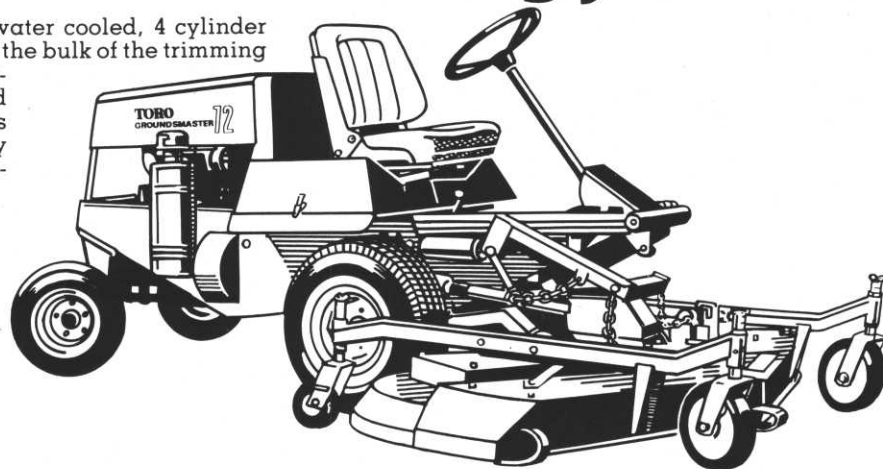
The Groundsmaster 52<sup>®</sup> offers wide cutting ability. It trims tight around trees and other obstacles with the offset, forward mounted 52" deck. One pedal hydrostatic drive for responsive operation, hydraulic deck lift for fast, easy transport and cushioned seat for operator comfort. Attachments include 48" rotary broom, leaf mulcher, and vacuum.

AVAILABLE ON BOTH 52's AND 72's

- \*Cabs
- \*Roll Bars
- \*Rotary Brooms
- \*2 Stage Snowthrowers
- \*Leaf Mulchers

## Groundsmaster 72<sup>®</sup> The Professional for the big jobs.

The Groundsmaster 72<sup>®</sup> has power to spare from its water cooled, 4 cylinder engine. The 72" floating cutting deck is offset to handle the bulk of the trimming jobs around trees, along fences, walls and other obstacles. One pedal hydrostatic drive for responsive speed selection in forward and reverse. Optional accessories like the rear discharge cutter deck, leaf mulcher, rotary broom and ROPS make this machine a versatile workhorse.



### MINNESOTA TORO, INC.

14900 Twenty First Avenue North Minneapolis, Minnesota 55441  
Phone (612) 475-2200

# BUDGET PROBLEMS?

Let Minnesota Toro, Inc. help plan your 1982 chemical and equipment needs and save \$\$\$\$\$. You have a choice of ordering now and getting Spring terms or get a terrific buy right now on our "YEAR END INVENTORY REDUCTION SALE". Call and ask for details.

MINNESOTA TOLL FREE 1-800-362-3665 or ND, SD, WI 1-800-328-3558

## CHEMICALS

AQUA-GRO  
3336WP  
3336-F  
PMAS 10%  
CADDY  
MCP  
FLUF  
SULFUR-F  
WATER ACIDIFIER  
DACONIL 2787 W-75  
DACONIL 2787 FLOWABLE  
DACTHAL GRANULES  
TERSAN SP  
TERSAN 1991  
TERSAN 75  
TERSAN LSR  
TUPERSAN  
CALO CLOR  
CALO GRAN  
KOBAN  
ROUNDUP  
EMBARK  
MALATHION  
TERRACLOR 75% (PCNB)

TRIMEC - BROADLEAF  
TRIMEC - BENT  
EXHALT 800  
2-4, D  
BETAMEC-4 (PRE-EMERGENCE  
CRABGRASS)

CHIPCO 26019  
RONSTAR G  
THIRAM 75  
MICROGREEN  
ACTI-DIONE TGF  
ACTI-DIONE THIRAM  
ACTI-DIONE RZ

## SEED

PENNCROSS SEED  
PENNEAGLE SEED

## GOLF SUPPLIES

PAR AIDE  
STANDARD  
CHIX TEE TOWELS



**MINNESOTA TORO, INC.**

14900 Twenty First Avenue North Minneapolis, Minnesota 55441  
Phone (612) 475-2200



# Presenting the for your

## Greensmaster 3®

Isolated cutting heads give each green uniform cutting height, appearance, playing characteristics.

Options include reel shut off kit, quick height of cut adjustment, 3 rollers, comb, brush/scraper.

Spiral thatching blades for more efficient thatching and throwing into baskets.

Quick disconnect reel motor means easy change to spiking or thatching reels.

## Turf Pro 84™

All wheels are drive wheels for excellent traction and maneuverability.

Reels with independent suspension follow ground contour, improve quality of cut.

Hydraulically powered reels and wheels eliminate belts and gears.

Reversible reel motor permits "backlapping" for reduced sharpening frequency.

You're concerned with not only the appearance of your course but every facet of its playability.

So we're letting you in on some ways we engineer turf care products with you in mind.

Consider this Toro foursome of Professionals.

Our Turf Pro 84™ is an all hydraulic triplex with the ability to give you the right clip for each desired height of cut and type of grass.

For your greens, our Greensmaster 3® still has no equal. Because no other greensmower has cutting heads isolated from the traction unit and grass baskets.

And meet our Sand Pro®.



# 1981 TURF CONFERENCE SCHEDULE

The 1981 edition of the M.G.C.S.A. Turf Conference offers an outstanding schedule of speakers and topics sure to interest every attendee. Just look at this line up:

Wednesday, December 2. Attendance at this session will qualify superintendents with pesticide applicator licenses for recertification. At 1:00 p.m., after the welcome, Wayne Daly will speak on Pesticide Laws; Curt Klint on Weeds; Mark Ascerno on Insects; Dr. Ward Stienstra on Diseases; Howard Krosch on Aquatics. The Annual Business Meeting will follow at 4:00 p.m.

Thursday, December 3 will start off with a prayer breakfast featuring Jeff Siemon of the Minnesota Vikings at 7:30 a.m. Following at 9:00 a.m. you will hear Roger Thomas of Jacobsen Mfg. Company speak on Energy Conservation and Turf Maintenance. Larry Stensrud of Dain Bosworth will speak on Individual Retirement Accounts; Dr. C. Hodges of Iowa State University will speak on Biology of High Sand Greens. At 1:00 p.m. Dr. Joe Duich of Penn State will lecture on the Seed Industry followed by the famous Bull Session by area distributors. That evening the Brandywine Singers will entertain at the dinner dance.

Friday, December 4 at 9:00 a.m. Dr. Joe Duich of Penn State has open topic time in which he will speak on whatever strikes his fancy. Al Smith of Johnson Screening will follow with a lecture on Well Maintenance. Stan Zontek of the U.S.G.A. Green Section will speak on Observations of the Region. Dr. Donald White will deliver an update on the University. After lunch Dr. Ward Stienstra will speak on Turf Diseases and Control and the superintendents' panel will tie into the subject of Irrigation Systems. At 3:00 p.m. we will adjourn for a safe trip home. Fill out the advance registration forms you received in the mail and save yourself time. But most of all, BE SURE TO ATTEND.

Nick Dunn, Chairman

**Keep  
this card  
handy.  
It could  
save you  
time  
and  
money.**





# GREEN CLIPS

- CLIP 1: NEW BOOK ANNOUNCED.** Destructive Turf Insects is the title of a new long-awaited book by Dr. Harry Niemczyk, turfgrass entomologist. The book covers pests of warm and cool season grasses, contains over 130 color photos and is written in easy-to-read language. Included is a color photo guide to identifying insects and mites that inhabit the soil, thatch, leaves and stems. Nine chapters cover: Life Cycles; Principles of Control; Preventive Programs for Select Major Pests; Equipment and Methods of Detecting Turf Insects and References. Available October 20, 1981, the book is 8x11, spiral bound with a durable plastic cover. \$18.95 plus \$1.25 per copy postage and handling. HDN BOOK SALES, 2935 Smithville W. Rd., Wooster, Ohio 44691.
- CLIP 2: NECROLOGY.** David Blomdahl, a Life Member of M.G.C.S.A. who lived in Duluth, died in September of a massive heart attack. We all remember Dave as the long time superintendent at Ridgeview.
- CLIP 3: GOLF COURSE MANAGEMENT MAGAZINE TO BE PUBLISHED EVERY MONTH IN 1982.** GOLF COURSE MANAGEMENT is expanding to 12 issues beginning in 1982. Formerly consisting of 10 issues, two of which were combined, November, December and January-February, the magazine will now be able to better serve the membership, readers and attract a larger portion of the advertising dollar with the most up-to-date information presented in a more timely fashion.
- CLIP 4: CERTIFICATION TESTING AT NATIONAL CONFERENCE.** The certification examination is scheduled for Sunday, January 31, 1982 during conference week. To be eligible to apply for certification one must be currently employed as a Golf Course Superintendent and have been a Class A member of GCSAA for at least two years. However, we have determined that if your two year period is completed by February 28, 1982, you will be eligible to take the certification examination during conference week. Qualified candidates should contact Bonnie Stephenson, Education Dept. at GCSAA Headquarters before December 31, 1981 to arrange for testing at the 1982 conference.

**We're seen in all the  
right places.**



**E-Z-GO  
TEXTRON**

E-Z-GO UPPER MIDWEST  
5900 University Avenue N.E.  
Fridley, Minn. 55432  
(612)571-4230

# O. J. Noer Foundation Report

BY JAMES M. LATHAN, RESEARCH DIRECTOR

The O. J. Noer Foundation was initiated in 1959 by associates and friends of O. J. Noer to honor him for his lifetime of work in turfgrass improvement throughout North America. Noer was a native of Stoughton, Wisconsin who graduated from the University of Wisconsin and did graduate work there which resulted in the production and marketing of Milorganite. The Foundation is dedicated to the generation of original research through grants to universities and experiment stations. Most of these projects, being basic in nature, would have no "commercial" support. But being basic research, the information will have value over a broad range of interests.

Much of the data generated has no immediate, direct effect on turf management since it is fundamental in nature. It does, however, form a base from which more practical projects can be developed. Dr. Jim Beard calls this the "fallout effect". If basic facts have been developed, a great deal of time, money and effort has been saved to do other things.

An example of this fallout effect can be illustrated by thatch studies. The Foundation established grants at Michigan State and Texas A & M concurrently to study the Identification, Cause and Effect and Control of Thatch on cool - and warm - season grasses. Since then, there have been many projects on thatch dealing with subjects like insecticide effects, disease generation, etc., all based on data accumulated by the initial projects.

The very first project was at the University of Wisconsin by Dr. Jim Love. This was the first time anyone had shown visible nutrient deficiency symptoms in turfgrasses. The paper by Love and the photographs are classics in the field. The color plates, by the way, can be found in Dr. Beard's forthcoming book.

Wisconsin does not have the extensive turfgrass research facilities found in other states. It is incumbent upon superintendents, however, to put money into research since they will be the beneficiaries in the long run. To do this on an orderly basis, an organization such as the O. J. Noer Research Foundation, Inc. is the best vehicle to use.

Most of the monies contributed to the Foundation comes from Milorganite distributors who have a self-assessed fee on tonnage sold each year. Superintendents' Associations across the country also make gifts along with interested individuals and companies like Jacobsen and Toro.

Noer grants have been made toward worthwhile projects in all sections of the country from New Jersey to California and from Florida to Washington.

There are four national level funding agencies for turfgrass research: the U.S.G.A. Green Section provides the most money, followed by the G.C.S.A.A. Research and Education Fund, the Noer Foundation and Musser Foundation. Most G.C.S.A.A. projects are, and rightly so, on a more practical plane such as the Toronto bent problem in Chicago last year when G.C.S.A.A. and the Green Section went to the aid of members to try to solve a local, but vexing problem.

One final word. Noer Foundation grants are made from investment profits. Thus, any donations continue to bring dividends from now on. In addition, since there are no paid employees, there is a minimum overhead. In 1980 the management cost of managing the \$164,000 fund amounted to only 2%. Officers and Directors receive no pay, no transportation or living expenses at meetings. They serve because of their remembrance of O. J. Noer and their commitment to the field from which their livelihood comes. That's how the Foundation has generated \$180,000 for turf research in the last twenty years.

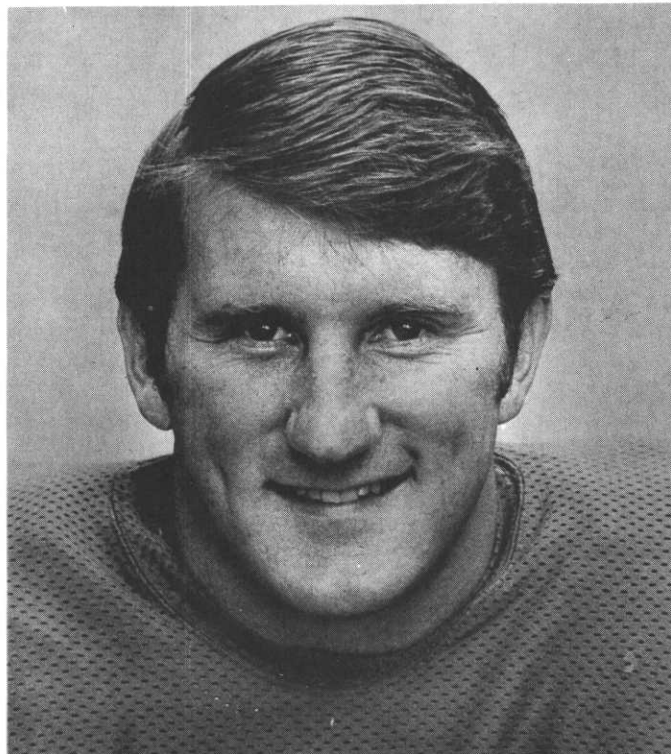


# FEATURED SPEAKER AT PRAYER BREAKFAST

The prayer breakfast scheduled for Thursday, December 3 at 7:30 a.m. will feature Jeff Siemon, linebacker for the Minnesota Vikings. Jeff is a member of the local chapter of the Fellowship of Christian Athletes. He is on the National Fellowship of Christian Advisory Council and a member of the Pro Athletes Outreach Board and Steering Committee.

During this time of fellowship there will be music and singing. A continental breakfast will be served.

A free will offering will be taken to help offset the costs of the breakfast.



JEFF SIEMON



## OUR 32nd YEAR

## WE SELL THE BEST

**CUSHMAN®  
TURF-CARE  
EQUIPMENT**

3 & 4 wheel turf trucksters

**Club Car®**

*"America's Fastest Growing Golf Car Company"*

**NATIONAL MOWER COMPANY**

SINCE 1919

**The Melex Turtle**  
*The Toughest Golf Car Going.*

**Broyhill SPRAYERS**

**CUSHMAN®**

**The Front Line™ Mower**

Tough enough to be a Cushman.

**New! Diesel Power**

- 4-cycle, 2-cylinder engine
- Water-cooled
- Economical

Jerry Commers

PARTS • SALES • SERVICE

**CUSHMAN MOTOR CO., INC.**

John Sniker

Tim Commers

2909 E. FRANKLIN AVENUE • MINNEAPOLIS, MINNESOTA • PHONE: (612) 333-3487

# Healthier Turf Begins This Fall At



May we supply your

Fall chemical requirements ?  
... prices are good - delivery prompt



**CALO-CLOR**<sup>®</sup>  
BRAND

**CALO-GRAN**<sup>®</sup>  
BRAND



**TERSAN SP**



**PCNB**

**WACLEARY**

**PMAS (10%)**

CALL (612) 484-8411 or use this bottom section

\*\*\*\*\*

Mail to: R. L. GOULD & CO. / 3711 LEXINGTON AVE. NO. / ST. PAUL, MN 55112

Send us the following:

\_\_\_\_\_ 5# Calo-Clor  
quant

\_\_\_\_\_ 1 gal PMAS  
quant

\_\_\_\_\_ 25# Calo-Clor  
quant

\_\_\_\_\_ 36# Tersan  
quant

\_\_\_\_\_ 5 gal PMAS  
quant

\_\_\_\_\_ 30# Calo-Gran  
quant

\_\_\_\_\_ 36# PCNB  
quant

INSTITUTION \_\_\_\_\_

ADDRESS \_\_\_\_\_ CITY \_\_\_\_\_ STATE \_\_\_\_\_ ZIP \_\_\_\_\_

**R.L.GOULD & CO. - 3711 LEXINGTON AVE. NO.  
(612) 484-8411 ST.PAUL, MN. 55112**