

Minnesota Golf Course Superintendents' Association

AFFILIATED WITH THE GOLF COURSE SUPERINTENDENTS' ASSOCIATION OF AMERICA

MAY 1981

HOLE



NOTES

MAILING ADDRESS: 6550 YORK AVE. SOUTH SUITE 301 EDINA, MINNESOTA 55435 PHONE:(612) 927-4643 EDITING COMMITTEE: DALE CALDWELL LARRY MUELLER & DENNIS HENDRICKSON

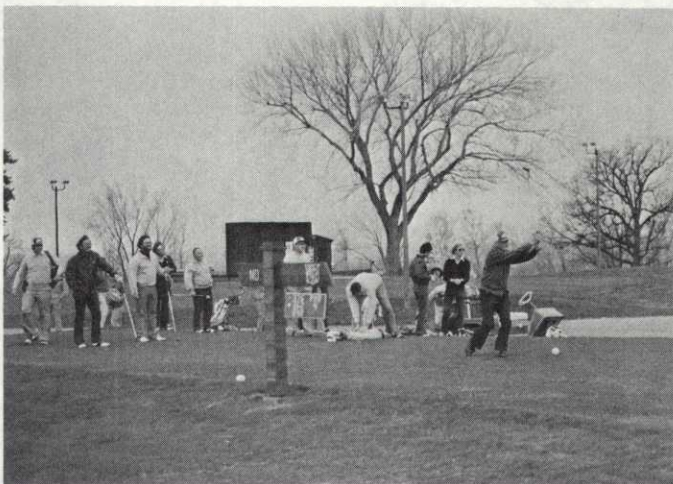
LEARN & PLAY AT MANKATO



NOW HEAR THIS! Boots Fuller, Host Superintendent, discusses the USGA recommendations for the Mankato C.C.



DECEPTIVE. No, the Mankato clubhouse does not sit on the 18th Green. Actually, it's 80 yds. away.



SENIOR SENIOR. Carl Anderson, Life Member, opens another season with a mighty whack.



TAYLOR TALKS. Don Taylor of the U of M discusses size of sand particles as related to topdressing greens.