

# Minnesota Golf Course Superintendents' Association

AFFILIATED WITH THE GOLF COURSE SUPERINTENDENTS' ASSOCIATION OF AMERICA

JUNE 1981

## HOLE



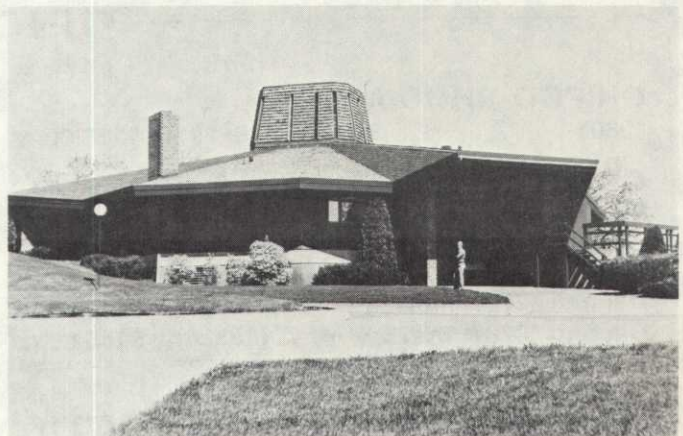
## NOTES

MAILING ADDRESS: 6550 YORK AVE. SOUTH SUITE 301 EDINA, MINNESOTA 55435 PHONE:(612) 927-4643 EDITING COMMITTEE: DALE CALDWELL LARRY MUELLER & DENNIS HENDRICKSON

## SCENES FROM ST. CLOUD



**EDUCATION.** Jim Lyne of the Cushman Company held forth on repair and maintenance.



**STRIKING.** St. Cloud Country Club's modern clubhouse belies historic setting on the banks of the Mississippi.



**CHALLENGE.** 185 yard drop shot Par 3 offers plenty of scenery as well as difficulty.



**EQUIPMENT.** Cushman products were on display and attracted lots of attention.