

# Minnesota Golf Course Superintendents' Association

AFFILIATED WITH THE GOLF COURSE SUPERINTENDENTS' ASSOCIATION OF AMERICA

JULY, 1981

## HOLE

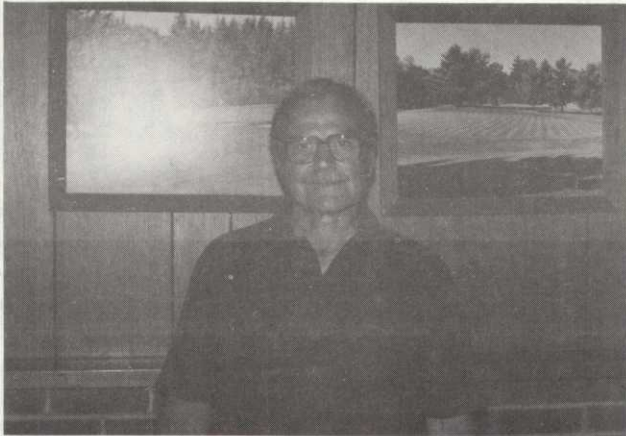


## NOTES

MAILING ADDRESS: 6550 YORK AVE. SOUTH SUITE 301 EDINA, MINNESOTA 55435 PHONE:(612) 927-4643

EDITING COMMITTEE: DALE CALDWELL  
LARRY MUELLER & DENNIS HENDRICKSON

## MORA MEETING MEMORIES



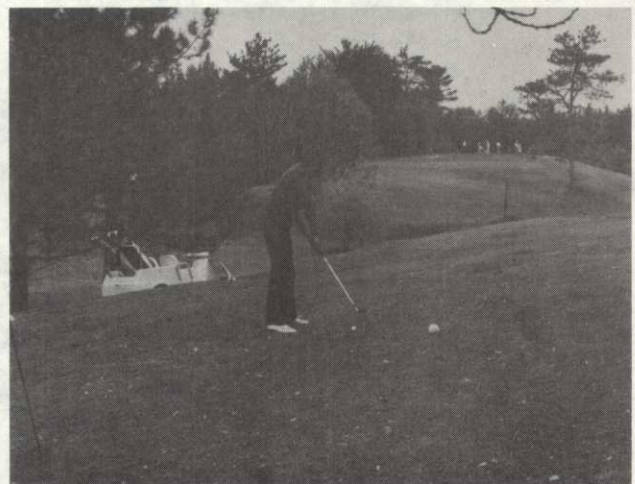
GENIAL HOST. Fred Anderson saw to it that a great time was had by all attendees.



NUTS & BOLTS. New Hahn topdressing machine is explained in great detail at Robertson display.



IDEA SHARING. Left to right, Carl Tychsen, Dick Ulrick and Irv Novak discuss turf problems.



SOME CHALLENGE. Jim Brown of Spicer tangles with difficult Par 3 at Mora Country Club.