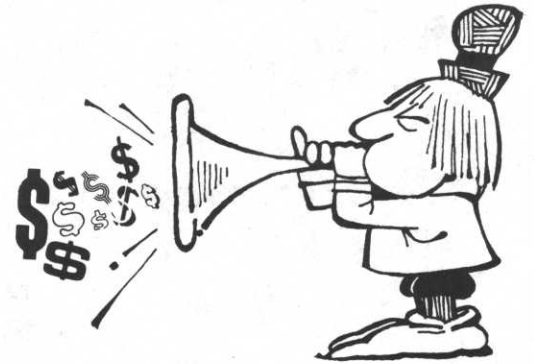


IT'S IN THE MAIL



1981

WINTER BOOKING PROGRAM

Hurry!!!



Spring is just around the corner....

R.L. Gould Co., 3711 Lexington Ave. No., St. Paul, MN / (612) 484-8411

HOLE NOTES, official publication of the MINNESOTA GOLF COURSE SUPERINTENDENTS' ASSOCIATION.

EDITOR - WARREN J. REBHOLZ
6550 YORK AVENUE SOUTH
SUITE 301
EDINA, MINNESOTA 55435
PHONE: 612/927-4643

ASSOCIATE EDITOR - THOMAS P. MAGNE

MGCSA BOARD OF DIRECTORS FOR 1981

OFFICERS

PRESIDENT - DENNIS HENDRICKSON
VICE-PRESIDENT - LARRY D. MUELLER
SECRETARY - STEVEN YOUNG
TREASURER - JOHN NYLUND
EX-OFFICIO - RICHARD DESPLINTER

DIRECTORS

DALE CALDWELL KERRY GLADER
NATHAN DUNN ROGER KISCH
IRWIN FULLER, JR. DONAVAN LINDBLAD

THE FOLLOWING IS A LIST OF OFFICE TELEPHONE NUMBERS FOR THE ENTIRE BOARD: AREA CODE 612.

DENNIS HENDRICKSON.....435-7759
LARRY MUELLER.....884-1074
STEVEN YOUNG.....473-7418
JOHN NYLUND.....941-5117
DICK DESPLINTER.....537-1149
DALE CALDWELL.....646-7125
NATHAN DUNN.....448-3626
IRWIN FULLER.....(507)388-2546
KERRY GLADER.....253-5250
ROGER KISCH.....451-1666
DON LINDBLAD.....755-2140

The kindergarten lad rushed home from school and insisted his mother buy him a set of pistols, holsters and gun belt.

"Whatever for, dear?" his mother asked.
"You surely would not need anything like that for school, would you?"

"Yes, I do," he replied. "My teacher said that tomorrow she's going to teach us to draw."



**FROM THE
PRESIDENT'S
DESK**

**DENNIS
HENDRICKSON**

It is my privilege to serve as President of this organization. I feel very honored to have been selected. I am very proud to be a member of the M.G.C.S.A. It is my hope that I will be able to serve this organization in such a way as to improve the image of the golf course superintendent in the eyes of the golfing public and to make this association even better. I plan to continue the many things that President Dick DeSplinter initiated last year and to initiate a few new programs which have been discussed by the Board of Directors.

I feel education is the key. There are many ways available to the members of the M.G.C.S.A. if we choose to educate ourselves further. One, of course, is the HOLE NOTES. We should all make it a point to read it and to contribute to it.

We can all learn from our peers at our monthly meetings. By the way, the next meeting will be our January outing which will be January 12, 1981 at Izaty's Lodge on Lake Mille Lacs. Jerry Dubbs and Wally Benson will be our hosts. This has become an enjoyable annual trip. By conversing with so many of our friends who have our same problems, we become aware of many ways of attacking them to find solutions. We should all make an attempt to meet new people at our meetings. The first step could be made by wearing our name tags which make it easier to approach someone to learn about him.

I would like to take this opportunity to tell you about myself. I am presently the superintendent of the Honeywell Country Club in Lakeville, Minnesota. I grew up on a farm near Paynesville, Minnesota. While attending high school my biology
continued on Page 3

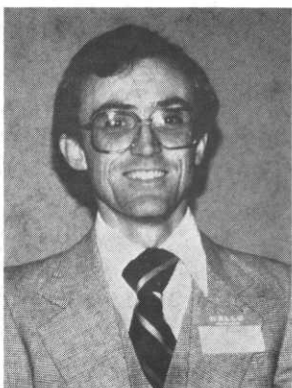
teacher, now Pastor DelRoy Johnson who spoke at our 1980 prayer breakfast, was the superintendent of the Koronis Hills Golf Club. I worked for him one summer after which he accepted a position teaching at a university in Iowa. He asked me to be his replacement at Koronis Hills. I served as superintendent there for four summers while attending Augsburg College, Minneapolis where I graduated in 1971 with a B.A. degree, majoring in biology, minoring in chemistry. After graduation I worked for Northrup King for ten months in Waterville and at the Eden Prairie Research Firm. I missed golf course work and then decided to try to get on a course in the metro area. I happened into Rolling Green Country Club one afternoon where I first met Jim Lindblad, then the superintendent there. He directed me to Dave Feser who was looking for an assistant at the Honeywell Country Club. I was interviewed and got the job. That summer I enrolled in a night course at the University of Minnesota in turf management, taught by Dr. White. Dave Feser left that fall for the Fiji Islands to build a golf course. I was interviewed for his job and was hired. In 1976 I became involved with the certification program offered by the Golf Course Superintendents' Association of America and became certified. I have been married for seven years to my wife, Sally. This past September we had our first child, Justin. We live in Burnsville, Minnesota.

We can also learn through research. Each one of us should support the expanding research program of the M.G.C.S.A. This year will be very interesting as Dr. Taylor continues his work in sand topdressing with help from Dr. White and Dr. Blake and as Dr. Stienstra explores an intriguing turf disease which we heard about at our Annual Conference. He will also be working with other diseases and fertilizer studies.

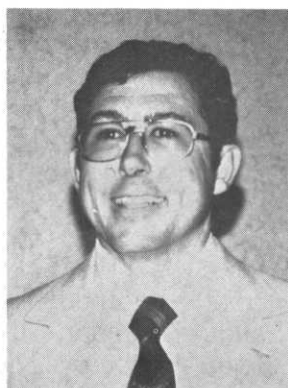
The Annual Conferences offered by the M.G.C.S.A. and the G.C.S.A.A. are very important if we are to keep up with current information available to the turfgrass industry. This year's M.G.C.S.A. Conference was a huge success. A special thank you goes to Don Lindblad and his committee and to all those who participated. Plans are already under way for next year's conference. We are going to try our best to have a CPR class in conjunction with the conference. The superintendent is most likely to be the first employee at the club to be contacted if a golfer has a heart attack so this class could save lives. This year the G.C.S.A.A. Conference will be held in Anaheim, California, January 25-30, 1981. It has all the indication of being the biggest and best ever. I hope to see many of you there.

I would like to welcome all the new directors to the Board. They are Irwin Fuller, Jr., Dale Caldwell, Nathan Dunn and Kerry Glader. I would also like to wish Jim Lindblad good luck as he runs for a directorship of the G.C.S.A.A. It looks like it will be an interesting year to belong to the Minnesota Golf Course Superintendents' Association. I hope I can get to meet each and every member and to be of service to you this year.

NEWLY ELECTED DIRECTORS



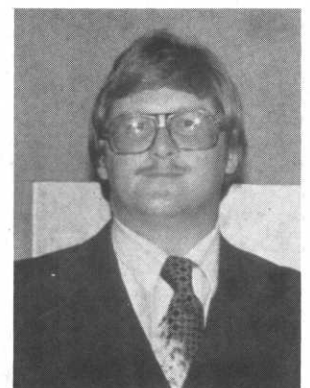
DALE CALDWELL



NICK DUNN



IRV FULLER



KERRY GLADER

TURF CONFERENCE HIGHLIGHTS



INSPIRATION. Pastor Del Roy Johnson, left, conducted the prayer meeting before the conference with the help of Craig Mather at the piano.



STRESS EXPERT. Jim Nicol, left, introduced Dr. John P. McNamara who spoke on burn out. Not grass, but mental!



RESEARCH PROGRAM. Dr. Ward Stienstra reported on the ongoing M.G.C.S.A. Research Program that now covers both summer and winter projects.



SKILLED SPEAKERS. George Schmitt, left, spoke on Relating Skills and Carl Schwartzkopf reported on new U.S.G.A. Green Section programs.



SOME PLAY. A Scandinavian Christmas theme party was a fitting and fun way to wind up the successful conference.



HANDSOME EMCEE. Larry Vetter handled the introductions at the banquet in grand style. New President and Mrs. Hendrickson are on the right.

PROTECTING YOUR SOCIAL SECURITY INVESTMENT

Those Social Security payments you've been making all these years represent one of the most substantial investments you will ever make. Seen in that light, it only makes sense that you should check on your investment from time to time. The amount of paper-work needed to make this country run is a standing joke, but like many old jokes, there are times when it isn't very funny. When you consider the amount of information you and your family provide the government yearly and multiply that by the number of people in the country, can you really be sure that your records are correct? After all, there is a lot of money at stake here.

Consider the process involved. Social Security tax is withheld from your pay. Your employer matches that amount and sends both taxes, along with a report on your earnings, to the Internal Revenue Service. The IRS in turn transmits the earnings report to the Social Security Administration where it is fed into a computer and credited to your account. Most of the time, the system works, but there is room for error.

Most cities have a Social Security Administration office. They can help you request a statement of your earnings which will show those payments which have been officially credited to your account.

Because there is a time lag in processing information, the statement may not cover the most recent wages you have received but it will show your total earnings in each of the last three years and your total earnings since 1936. You can compare these figures with the information on your W-2 forms for those years to make sure everything is in order.

Call US
for the best
in Turf Equipment,
The KROMER CO
612/472-4167



- | | |
|-------------|--|
| *MYERS | Sprayers |
| *SMITHCO | Red Rider, Trucksters, Sprayers,
Trap Rakes |
| *HOWARD | 48" to 82" Rotary Mowers |
| *HECKENDORN | 36" to 88" Rotary Mowers |
| *TURF-VAC | Leaf & Debris Vacuums |
| *ROSEMAN | Gang Mowers |
| *DIADEM | Fertilizer Spreaders |
| *HEFTY | Diesel & Gas Tractors |
| *DAVIS 500 | Golf Cars |
| *KWH | Blowers & Mist Blowers |
| *TEX. REF. | Tire Seal |
| *WD-40 | Preservative |

KROMER CO

3455 County Road 44, Mound, Mn. 55364
TELEPHONE 612-472-4167

If there is a mistake, a representative in your local office will help you locate any missing reports of your past earnings. You should check on your earnings every three years. The law sets a time limit for corrections of three years, three months and fifteen days after the year in which the wages have been paid. After that, it becomes much more difficult to have a mistake corrected.

Your own records are your best protection in case of an emergency. You can plan ahead for retirement but not for a sudden death or disability in the family.

Your records should be kept in a safe, accessible place and should contain every family member's Social Security number, birth or baptismal certificate, marriage certificate, any divorce or annulment papers and W-2 forms.

W-2 forms should at least be kept until you have a statement of earnings credited to your account.

Reprint FORE FRONT

INTRODUCING

LANDSCAPE & TURF SUPPLY

Formally M.T. Wiley Inc.

New Warehouse
at
307 E. 6th St., Chaska, MN. 55318

DISTRIBUTING

Turf Chemicals
Grass Seed
Fertilizer
Plant Material
&
Nursery Supplies

Call

612 - 448 - 3300
Milt or John Wiley

1981 PRICE LIST

FUNGICIDES

CHIPCO - RHODIA

Thiram 75 (12x3#) \$79.20 cs.
 "26019" (6x2#) \$216.00 cs.

CLEARY

PMAS 10% (4x1 gal.)... \$35.00 gal.
 (5 gal.) \$168.00
 Caddy (2x2½ gal.)... \$180.00 cs.
 Spotrete-F (2x2½ gal.)... \$110.00 cs.
 Spectro contact systemic fungicide .. (6x2½#) ... \$162.00 cs.
 Cleary's 3336 (6x2#) \$177.00 cs.
 Cleary's 3336-F (flowable) (4x1 gal.)... \$420.00 cs.
 (2x2½ gal.)... \$488.25 cs.

DIAMOND CHEMICAL

Daconil "2787" flowable 500-G (2x2 gal.)... \$141.60 cs.
 Daconil "2787 W-75 wettable powder (12x2#) ... \$165.60 cs.

DUPONT

Tersan "75" (12x3#) ... \$100.80 cs.
 Tersan "1991" (6x2#) \$157.80 cs.
 Tersan "LSR" (12x3#) \$99.00 cs.
 Tersan "SP" (12x3#) ... \$313.20 cs.

GORDENS CHEMICAL

Dymec 50 (8x4#) \$187.20 cs.
 Formec-80 (Fore) (12x4#) ... \$136.80 cs.

MALLINCKRODT COMPANY

Cadimate 5 lb. \$97.00 box
 25 lb. ... \$480.00 drum
 Calo Clor 5 lb. \$110.00 bottle
 25 lb. ... \$495.00 drum
 Calo Gran (2x30#) \$94.80 cs.
 Koban (6x5#) \$162.00 cs.
 25 lb. ... \$298.75 drum
 Kromad (6x2#) \$60.00 cs.
 25 lb. ... \$121.25 drum
 Duosan (6x2#) \$130.20 cs.

OLIN

PCNB - Terraclor 75% (12x3#) \$111.24 cs.
 (55# bag) \$156.75
 PCNB - Turfcide 10% Granular (20# bag) \$15.20
 (50# bag) \$37.00

TUCO

Acti-dione TGF (12x15 oz.) ... 1-7 cs. \$109.25 cs.
 8 or more ... \$106.25 cs.
 Acti-dione Thiram (5x3#) 1-7 cs. \$109.25 cs.
 8 or more ... \$106.25 cs.
 Acti-dione Thiram (5x10#) 1 cs. \$307.00 ca.
 2 or more ... \$304.00 cs.
 Acti-dione RZ (5x10#) 1 cs. \$361.50 cs.
 2 or more ... \$358.00 cs.

HERBICIDES

CHIPCO - RHODIA

Ronstar G (50# bag) \$37.50 bag

CLEARY

MCPP (2x2½ gal.) ... \$18.35 gal.
 MCPP - 2,4 D (2x2½ gal.) ... \$22.50 gal.

DIAMOND

Dacthal W75 Turf wettable powder .. (2x24#) \$220.80 cs.
 Dacthal Granules G-5 (50# bag) \$50.00 bag

GORDENS CHEMICAL

Trimec brush killer (6x1 gal.) \$27.45 gal.
 (5 gal.) \$131.50
 Trimec - Fairway (6x1 gal.) 26.20 gal.
 (5 gal.) \$125.50
 (30 gal.) \$754.50
 Trimec - Bent (6x1 gal.) \$26.75 gal.
 2-4, D-4# Amine (6x1 gal.) \$14.25 gal.
 (5 gal.) \$65.50 pail
 Vegemec (4x1 gal.) \$11.30 gal.
 (5 gal.) \$52.75 pail
 Betamec-4 (pre-san) (4x1 gal.) \$35.25 gal.
 Mecomec 2.5# MCPP (6x1 gal.) \$15.60 gal.
 (5 gal.) \$72.25 pail
 Carbemec (4x1 gal.) \$17.00 gal.

INSECTICIDES

Malathion (5 gal.) \$90.00
 (4x1 gal.) \$18.40

TUCO

Proxol 80 (12x2#) \$100.00 cs.

AQUATIC

Diquat 1 gal. bottle
 Aquathol K 5 gal. drum
 Aquathol (granular) 50 lb. bag
 Hydrothol 191 5 gal. drum
 Hydrothol 191 (granular) 50 lb. bag
 Weedtrine II 30 lb. bag
 Algimicyn PLL-C "Liquid" (4x1 gal.)
 (5 gal.)

Citrine Plus 5 gal. drum
 Citrine Plus (granular) 30 lb. bag
 Copper Sulfate 100 lb. bag
 Aquashade 1 gal. bottle
 Aquazine 5 lb. bag
 Algimicyn PLL-C "Pelleted" (2x20# pail)
 (50# bag)

Please call for current prices

All prices subject to change, please call for quote.
 612-448-3300

MISCELLANEOUS CHEMICALS

CHIPCO - RHODIA

Microgreen Liquid (5 gal.) \$55.00 pail

GORDENS CHEMICAL

Exhalt 800 (4x1 gal.) \$27.60 gal.

Exhalt 4-10 (4x1 gal.) \$21.80 gal.

Aqua-Zorb (4x1 gal.) \$15.60 gal.

AQUA-GRO

Aqua-Gro 100% liquid (5 gal.) \$105.75 pail

Aqua-Gro Granular (10 lb.) \$19.20 drum

(50 lb.) \$93.00 drum

Aqua-Gro "S" (15 lb.) \$14.30 drum

(75 lb.) \$64.50 drum

3-M COMPANY

Embark 2-S 1-4 gal. \$140.00 gal.

5-95 gal. ... \$130.00 gal.

GRASS SEED



Professional Turf Products

Cost/50 lb. bag

Cost/50 lb. bag

ATHLETIC PRO MIXTURE: \$75.00

25% Adelphi Kentucky Bluegrass

25% Parade Kentucky Bluegrass

50% NK 200 Perennial Ryegrass

GENERAL TURF MIXTURE: \$52.00

35% Kentucky Bluegrass 85/75

15% Park Kentucky Bluegrass

40% Creeping Red Fescue

10% Annual Ryegrass

LANDSCAPE PRO MIXTURE \$59.00

30% Kentucky Bluegrass 85/75

15% Park Kentucky Bluegrass

10% Parade Kentucky Bluegrass

25% Pennlawn Red Fescue

20% Delray Perennial Ryegrass

OVERSEEDER II MIXTURE \$78.00

20% Adelphi Kentucky Bluegrass

50% Parade Kentucky Bluegrass

15% Pennfine Perennial Ryegrass

15% NK 200 Perennial Ryegrass

SPECIAL PARK MIXTURE \$71.00

35% Aquila Kentucky Bluegrass

15% Park Kentucky Bluegrass

20% Ruby Creeping Red Fescue

20% Scaldis Hard Fescue

10% Pennfine Perennial Ryegrass

SWIFT & SURE MIXTURE \$63.00

15% Park Kentucky Bluegrass

15% Rugby Kentucky Bluegrass

30% Creeping Red Fescue

20% Pennfine Perennial Ryegrass

20% NK 200 Perennial Ryegrass

NOTE: Other professional mixtures & straight varieties are available. Quantity discounts available on all seed varieties & Mixtures. *Please call for Quotation.*

ACCESSORIES

PAR-AID

STANDARD

CHEX TEE TOWELS

Call for Par Aid & Standard Catalogs & Price Lists

Flags • Benches • Tee Markers • Ball Washers • Rakes • Poles • Hole Cutting Equipment • Signs

TREES • SHRUBS • DESIGN

TREES - From bare root for nurseries to large specimen trees for the landscape

NURSERY SUPPLIES - Burlap - Tree Wrap - Wire Baskets

*A full landscape design service is available through Arboron,
an added service of our new company.*

All prices subject to change, please call for quote.
612-448-3300

MILORGANITE



1981 PRICES

1 - 3 ton \$150.00 F.O.B. Chaska
 3 - 5 ton \$140.00 F.O.B. Chaska
 Truckload Bag .. \$103.50/ton + Freight
 Truckload Bulk .. \$83.00/ton + Freight



GOLF FAIRWAYS . . . One to three applications a year at 600 to 1,000 pounds per acre provide a rich, velvety turf. Milorganite-fed turf needs less water due to Milorganite's low salt index. Dormant winter applications hasten spring greenup and make better use of labor on golf courses and sports fields.

GOLF GREENS AND TEES . . . Milorganite feeding (write for detailed program) — as the source of nitrogen, phosphorus, and all minor elements — simplifies maintenance. This fertilizer insures a uniform and continuous growth. Dollar spot and other turf diseases are less frequent and less severe according to tests at noted Agriculture Experiment Stations. Less fungicide is needed to prevent or stop them. Milorganite assures optimum turf color and density — true quality.

ATHLETIC FIELDS . . . Ample Milorganite every 4 to 6 weeks of growing weather is the secret of good grass cover on heavy wear sports fields. A dormant application following the last game is widely practiced for early spring "greenup."



MILORGANITE ANALYSIS

	Percent
Nitrogen	6.25
Phosphorus	2.38
Potassium	0.315
Sulfur	1.02
Calcium	0.69
Magnesium	0.32
Iron	6.40
Aluminum	1.20
Chromium	0.60
Lead	0.046
Manganese	0.018
Sodium	0.136
Zinc	0.144
	Parts Per Million
Cadmium	79.0
Cobalt	5.1
Copper	405.0
Mercury	4.8
Molybdenum	13.0

Landscape & Turf Supply

307 E. 6th Street
 Chaska, MN. 55318

Postage
 PAID
 Permit # 91
 Chaska, MN. 55318

PUTTING THE BRAKES ON TENSION

Tension is a fact of life for anyone in a position of responsibility. The possibility of failure is one of our best motivations for putting out the extra effort that can make a success of whatever we attempt. Unfortunately, it can get out of hand. When the obstacles begin to look larger than they really are, and our efforts to deal with them seem ineffectual, tension has taken over. In extreme cases, it can completely paralyze or even bring on a variety of physical and mental illnesses that keep hospital beds full. Here are some suggestions for coping when things seem to be getting out of hand.

Talk it out. Sharing the burden will help relieve the strain. It may also clarify the problem and let you see a solution.

Get out of town. A change of scenery can often work wonders, even if it's only for a day or a weekend.

Do something for others. It will take your mind off your own problems or at least, let you see them in perspective.

Work it off. Chop some wood. Go for a brisk walk or a run. Hard physical work gives your mind a rest.

Don't try to be a superman. If you set your sights too high, you're bound to be frustrated. Take your goals one at a time.

Give in, occasionally. Even when you know you're right, sometimes it's easier to yield. It's better to bend than to break.

Tackle one task at a time. If you try to do several things at once, you may not do any of them right.

Don't withdraw. That usually just compounds the problem.

Schedule your recreation. Set a routine for relaxation and follow it, especially if you tend to drive yourself.

Reprint FORE FRONT

We're seen in all the right places.



EZ-GO TEXTRON

STEGNER GOLF CARS
5900 UNIVERSITY AVENUE N.E.

Minneapolis 571-4230
Ortonville 839-2511

CANDIDATES NOMINATED FOR GCSAA ELECTION

The Golf Course Superintendents' Association of America will elect a new President, Vice-President and two Directors in its annual membership meeting Jan. 27 in Anaheim, California.

Michael R. Bavier, CGCS, superintendent of Inverness Golf Club, Palatine, Ill. since 1969 and current GCSAA vice-president, has been nominated for the office of President. Bavier, a GCSAA member for 15 years, has served on the association's Board of Directors since 1977. The outgoing President, Melvin B. Lucas, Jr., CGCS, superintendent of Piping Rock Club, Long Island, N.Y., will serve on the board for an additional year.

Candidates for Vice-President are David C. Holler, CGCS, superintendent of Riviera C.C., Coral Gables, Fla., and James A. Wyllie, CGCS, superintendent of Bayview Country Club, Thornhill, Ontario, Canada. Holler, a GCSAA member for 15 years, was elected a Director in 1976. Wyllie, who currently is Secretary-Treasurer of the association, has been a member for 20 years, serving as a Director since 1977.

Four candidates have been nominated to fill two three-year terms on the association's Board of Directors. They are Eugene D. Baston, CGCS, superintendent of the Birmingham (Ala.) C.C.; Riley Lee Stottern, CGCS, superintendent of Jeremy Ranch C.C., Salt Lake City, Utah; Cary L. Tegtmeier, CGCS, superintendent of Topeka (Kan.) C.C., and Robert R. Wilson, superintendent of Oak Hill Country Club, San Antonio, Texas.

We have it on good authority that Jim Lindblad of the Minnesota Golf Course Superintendents' Association will be nominated from the floor, making it at least a five man race for the two directorships.

GCSAA members also will vote on changes in the association's bylaws regarding terms of directors and their eligibility for re-election. The annual membership meeting and election is part of the association's 52nd International Turfgrass Conference and Show January 25-30 in Anaheim. Continuing on the board will be Directors Paul Boizelle, CGCS, Fiddlers Elbow C.C., Far Hills, N.J.; Edward Dembnicki, CGCS, Arcadian Shores G.C., Myrtle Beach S.C.; Robert W. Osterman, CGCS, The Connecticut Golf Club, Easton, Conn., and James W. Timmerman, CGCS, Orchard Lake (Mich.) Country Club.

Fast, efficient maintenance and repair of well pumps.

Bergerson-Caswell is well equipped, not only for well drilling, but maintenance, too. If you have a reduced flow from an aging pump, or if you are starting to pump sand or other foreign materials, call us for an analysis of repairs. We can put new life into existing wells, quickly and economically.

Call (612) 479-3121

Bergerson-Caswell, Inc.

5115 Industrial Street • Maple Plain, MN 55359



Well pumps are quickly and easily pulled for inspection and repair by 10T Smeal Hydraulic Pulling Rigs—among the many special units in the Bergerson-Caswell fleet operating in the Upper Midwest.

MEMBERSHIP REPORT



ROGER KISCH

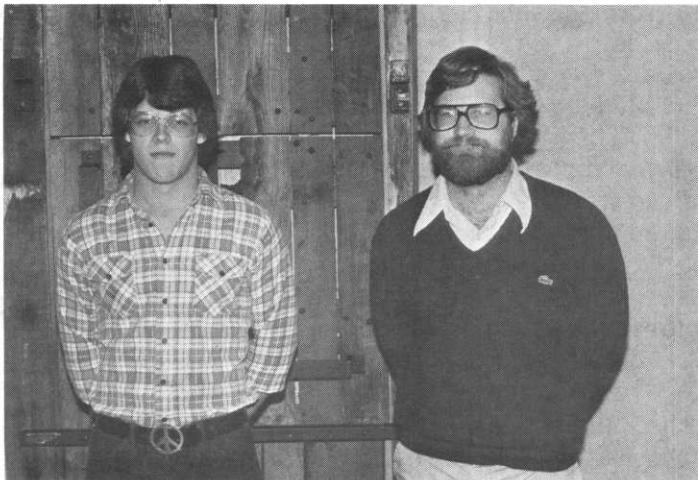
Hi, Fellow Members or Members To Be!

I am the chairman of the Membership Committee for 1981. If I can help anyone with becoming a new member, in reclassification or obtaining a new name tag, please feel free to call or write anytime. My number at work is 612/451-1666 or at home is 612/455-4821. My mailing address is: Roger Kisch, Southview Country Club, 239 East Mendota Road, West St. Paul, Minnesota 55118.

The following classification changes were approved at the December 16 Board meeting: TOM WATSON, Marshall Country Club, BII to B; CHARLES TILLMAN, Hudson, Wisconsin, A to AA; KURT JOHNSON, Crow Greens G.C., C to BII.

The M.G.C.S.A. extends a hearty welcome to the following new members voted in at our Annual Conference: DAN STANGL, Cuyuna Country Club, Class A; JEFF ELSETH, Loon Lake Golf Club, Class B; SCOTT PATTERSON, Peterson Seed, Class F; and DON MERSCHMAN, Long Lake Ford & Tractor, Class F. Also the new members pictured below: Left, JIM STILES, Anoka Landscape Center, Class C and KEITH GREENINGER, Wayzata Country Club, Class BII. Right, back row, left to right, CHARLES BLAKE, Souris Valley Golf Club, Class A; RICHARD ODDEN, Pebble Lake Golf Club, Class B; DOUG HOMOLKA, Anoka Landscape Career Center, Class C; BARRY JOHNSON, Ferndale Country Club, Class B; JOHN GRANHOLT, Eau Claire Country Club, Class BII; BOB SHIELDS, Lake Miltona Golf Club, Class A. Front row, left to right, ROBERT DEAMS, Maple Hills Golf Club, Class B; KIM KVAMME, Anoka Landscape Career Center, Class C; JEFF CHURCHILL, Anoka Landscape Career Center, Class C; and GREG SPENCER, Anoka Landscape Career Center, Class C.

Again, a hearty welcome to all our new members. May we see you often at our monthly meetings.



THREE TO RECEIVE GCSAA DISTINGUISHED SERVICE AWARD

Three Distinguished Service Awards, one of them posthumous, will be presented during the opening session of the 52nd International Turfgrass Conference and Show sponsored by the Golf Course Superintendents' Association of America January 25-30 in Anaheim, Calif. The Distinguished Service Award which recognizes outstanding service to the golf course superintendent's profession is the highest honor GCSAA bestows upon an individual.

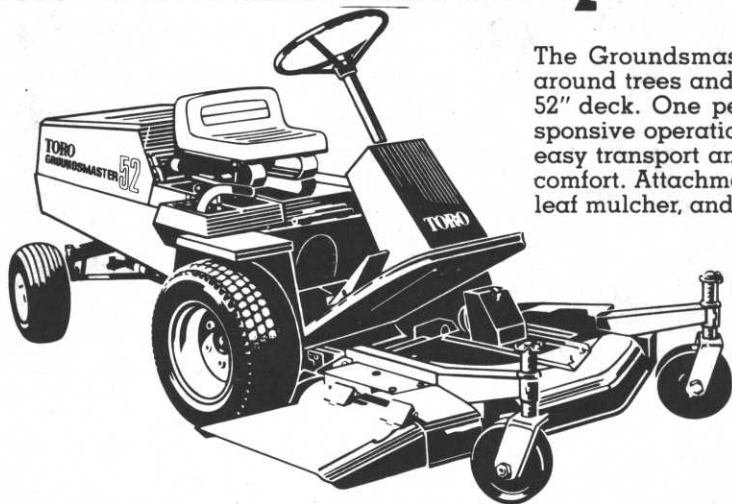
The posthumous award will go to the late Hans C. Schmeisser, superintendent of Forest Hill Golf Club, West Palm Beach, Fla., until his death Oct. 26 at the age of 88. Golf course architect Geoffrey S. Cornish and Dr. Ralph E. Engel, research professor in turfgrass management at Rutgers University, will receive the other two awards. Cornish, a Canadian golf course architect who was trained under Stanley Thompson, is responsible for the design of many of New England's best known golf courses. A former president of the American Society of Golf Course Architects, Cornish holds degrees from the University of British Columbia and the University of Massachusetts. From 1947 to 1952 he taught at the University of Massachusetts and since 1966 has been a special lecturer there. Cornish who also is an honorary member of the British golf course architects' association has planned more than 170 courses in the U.S., Canada and Europe.

Engel, research professor of turf management at Rutgers for more than 33 years also will receive a Distinguished Service Award. Engel's research interests have been varied, including moisture stress, cultivation practices, turf-type ryegrasses, pre-emergent crabgrass and goosegrass herbicides, goosegrass germination temperatures and seeding habits, zoysia tolerance to triazine herbicides, annual bluegrass encroachment into bentgrass and dormant fertilization. Engel, a member of GCSAA's Educational Advisory Council, has conducted a number of GCSAA educational programs and seminars including presentations at 12 GCSAA International Turfgrass Conferences. He also has served as administrative advisor and instructor of turf management courses in the Rutgers Winter Turf Program. He served on the Silvex Assessment Team for the U.S. Dept. Agriculture and has been a leading influence in the trend to low rates of nitrogen for reducing bentgrass failure. He also is a proponent of cultivation and topdressing as a means of reducing thatch and has recommended low phosphorus for annual bluegrass suppression in bentgrass turf. More than 100 superintendents in the New York-New Jersey area and nine university turf specialists have studied under Engel. A fellow of the American Society of Agronomy, he has written extensively on turf-related problems and research.

Schmeisser, born and educated in Germany, came to the U.S. in the 1920's to develop the landscaping at Everglades City, Fla. He designed and built his first course which was one of the first golfing facilities in Florida. He was instrumental in establishing the first association of golf course superintendents in Florida, was one of the nation's leading golf course superintendents and designers and was involved in the design and building or reconstruction of more than 30 golf courses, most of them in Florida. He was the first to plant Australian Pines and Malalucca trees on the Florida west coast and was one of the first to experiment with the pesticide 2, 4-D, six years before the chemical was commercially available. He was the father of Otto Schmeisser, superintendent of the Everglades Club, Palm Beach and John Schmeisser, an associate of golf course architect Robert Trent Jones. Schmeisser was active in GCSAA affairs, served as president of both the Florida Turf Grass Association and the South Florida GCSAA and taught turfgrass management at Palm Beach Junior College. He also was a member of the Palm Beach Country Horticulture Board and the Palm Beach GCSA.

GET YOUR GROUNDS - MASTERED SUMMER, WINTER, SPRING, OR FALL THE TORO GROUNDSMASTERS CAN DO IT ALL

Groundsmaster 52[®] The Professional for maneuverability.



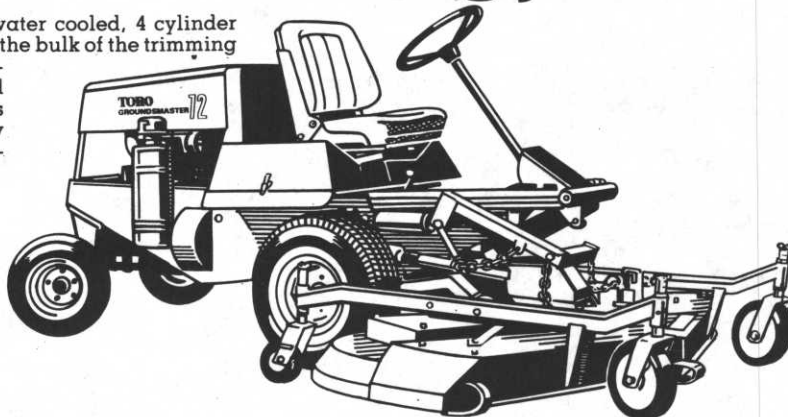
The Groundsmaster 52[®] offers wide cutting ability. It trims tight around trees and other obstacles with the offset, forward mounted 52" deck. One pedal hydrostatic drive for responsive operation, hydraulic deck lift for fast, easy transport and cushioned seat for operator comfort. Attachments include 48" rotary broom, leaf mulcher, and vacuum.

AVAILABLE ON BOTH 52's AND 72's

- *Cabs
- *Roll Bars
- *Rotary Brooms
- *2 Stage Snowthrowers
- *Leaf Mulchers

Groundsmaster 72[®] The Professional for the big jobs.

The Groundsmaster 72[®] has power to spare from its water cooled, 4 cylinder engine. The 72" floating cutting deck is offset to handle the bulk of the trimming jobs around trees, along fences, walls and other obstacles. One pedal hydrostatic drive for responsive speed selection in forward and reverse. Optional accessories like the rear discharge cutter deck, leaf mulcher, rotary broom and ROPS make this machine a versatile workhorse.



TORO
The Professionals

MINNESOTA TORO, INC.

14900 Twenty First Avenue North Minneapolis, Minnesota 55441
Phone (612) 475-2200