

Minnesota Golf Course Superintendents' Association

AFFILIATED WITH THE GOLF COURSE SUPERINTENDENTS' ASSOCIATION OF AMERICA

AUGUST, 1981

HOLE



NOTES

MAILING ADDRESS: 6550 YORK AVE. SOUTH SUITE 301 EDINA, MINNESOTA 55435 PHONE:(612) 927-4643 EDITING COMMITTEE: DALE CALDWELL LARRY MUELLER & DENNIS HENDRICKSON

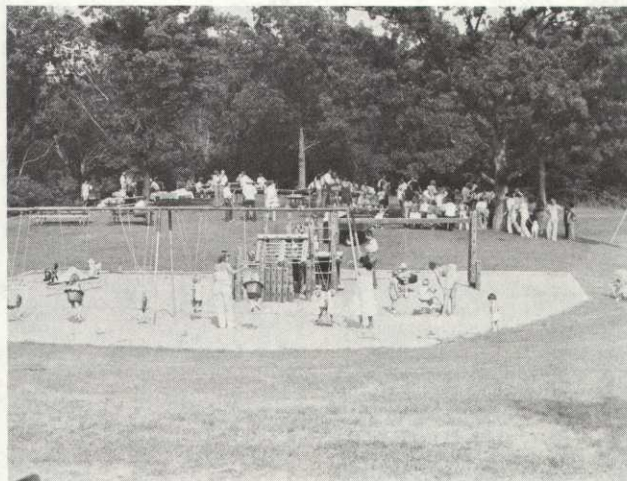
PICNICS ARE FOR EVERYONE



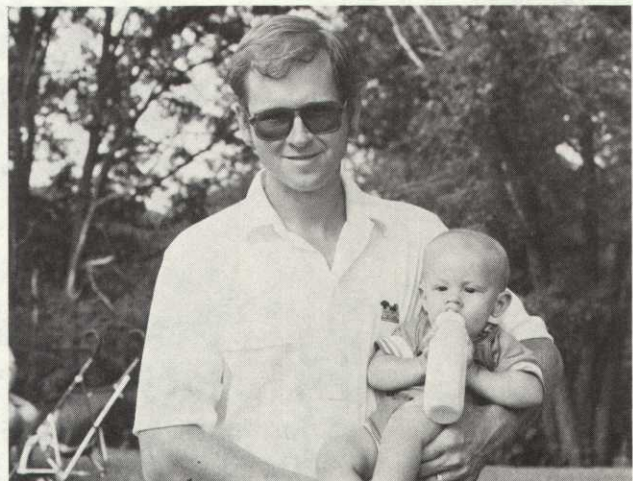
PUBLICITY. This must be the place! Braemar rolled out the red carpet.



JULY SNOW. John Nylund, left, supplied the site and Milt Wiley supplied the food and drinks.



PANORAMA. A perfect afternoon with fun and companionship on the menu.



DADDY. President Dennis with first born, Justin, who shunned burgers for his bottle.