

Healthier Turf Begins This Fall At



Control Snow Mold With

Terraclor®

soil fungicide



If snow mold is a problem on your golf greens you need Terraclor soil fungicide. Terraclor controls this damaging disease to help keep your grass healthy. See us today about Terraclor, made only by Olin Corporation.

R.L. Gould & Co.
3711 Lexington Ave. No.
St. Paul, MN

CALO-CLOR CALO-GRAN



REG. U. S. PAT. OFF.

TERSAN SP

Get Fall Chemical
and Fertilizer Quotes



....the pencils
are very sharp

(612) 484-8411

R.L. Gould Co.
3711 Lexington Ave. No.
St. Paul, MN.

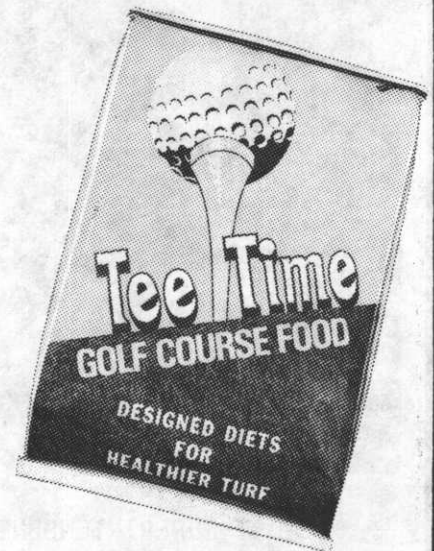


**THE MAGIC TRICK
THAT DOESN'T DISAPPEAR!**

NS/56 is the newest form of slow release nitrogen available. NS/56 is a combination of 32% nitrogen and 24% sulfur fused together to feed grass as it needs it.

NS/56 keeps feeding your grass nitrogen and sulfur without stopping . . . regardless of soil temperature or bacteria action. A surgeless release from spring through fall completely available in one growing season. NS/56 is the highest concentration of slow release major and secondary nutrient available in one pill.

**NS/56 MAKES YOUR GRASS
GLAD TO BE ALIVE!**



HOLE NOTES, official publication of the MINNESOTA GOLF COURSE SUPERINTENDENTS' ASSOCIATION.

EDITOR - WARREN J. REBHOLZ
6550 YORK AVENUE SOUTH
SUITE 301
EDINA, MINNESOTA 55435
PHONE - 612/927-4643

ASSOCIATE EDITOR - THOMAS P. MAGNE

MGCSA BOARD OF DIRECTORS FOR 1980

OFFICERS

PRESIDENT - RICHARD DESPLINTER
VICE-PRESIDENT - DENNIS HENDRICKSON
SECRETARY - LARRY MUELLER
TREASURER - JOHN NYLUND
EX-OFFICIO - GEORGE OSTLER

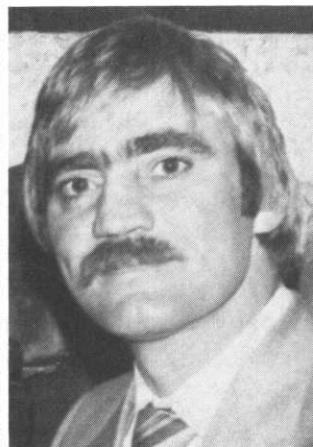
DIRECTORS

GERALD BIBBEY	JAMES LINDBLAD
ROGER KISCH	JERRY MCCANN
DON LINDBLAD	STEVE YOUNG

THE FOLLOWING IS A LIST OF OFFICE TELEPHONE NUMBERS FOR THE ENTIRE BOARD: AREA CODE 612

DICK DESPLINTER.....	537-1149
DENNIS HENDRICKSON.....	435-7759
LARRY MUELLER.....	884-1074
JOHN NYLUND.....	941-5117
GEORGE OSTLER.....	771-2628
JERRY BIBBEY.....	484-5261
ROGER KISCH.....	451-1666
DON LINDBLAD.....	755-2140
JIM LINDBLAD.....	473-8849
JERRY MCCANN.....	427-6110
STEVE YOUNG.....	473-7418

On the first day of school, each new kindergartner arrived home with a note from the teacher. It read, "Dear Parents: If you promise not to believe all your child says happens at school, I'll promise not to believe all he says happens at home."



FROM THE PRESIDENT'S DESK

Congratulations, Mr. John Lightfoot of Cloquet Country Club. John will retire this fall and his club is having a retirement party for him

Dick DeSplinter

on September 27. John, the entire membership wishes you the best for a long and happy retirement.

Our Annual Tournament is history and Don Lindblad's 81 was the best score this year. Congratulations, Don, I had more strokes than that before I left the practice putting green.

On behalf of all the tournament participants thank you, Host Superintendent Jim Lindblad. Also a special thank you to everyone at the Wayzata Country Club. Jim was also tournament chairman for which he did a beautiful job of organizing a very successful event. Jim, the course was beautiful and I'm at a loss for words to describe the great condition of the grounds. One thing I do know is that your efforts in the maintenance of course has created an awful lot of job security for you.

Next month's meeting will be at the Hastings Country Club where Host Superintendent Steve Schumacher will entertain us for the afternoon.

Mark your calendars for October 13 because it will be our last golf outing of the year.

The course will be a pleasant surprise to you who have not played it. It's not easy by any means and has many holes that require a fine golf shot to achieve par.

This is also a good time to encourage potential new members to come to the meeting and get their applications acted upon. Then they will be all set to enjoy the benefits of membership when the Turf Conference rolls around in December.

GREEN CLIPPINGS

CLIP 1: The Nominating Committee is in the process of selecting a slate of officers for the upcoming election. In order for our association to continue to uphold the high standards and traditions that have become synonymous with our organization, it is necessary that everyone take an active part.

If any one is interested in serving the association in this capacity, please contact a member of the Nominating Committee. George Ostler, Chairman
Keith Scott
Jim Lindblad

CLIP 2: A new feature at the 51st International Turfgrass Conference and Show in St. Louis was a display of solutions to common course problems from superintendents all over the country. There was a display in the exhibit hall which consisted of pictures, project outlines and typed descriptions of several problems shared by members of the Association. G.C.S.A.A. is again planning this display for the Anaheim conference. Please start thinking now about an idea or problem solution or just an item of interest that you would like to share with other members of the Association and send it to Palmer Maples, Jr., CGCS, Director of Education, GCSAA, 1617 St. Andrews Drive, Lawrence, Kansas 66044.

CLIP 3: CONGRATULATIONS are in order for M.G.C.S.A. Vice-President Dennis Hendrickson and his wife, Sally. Dennis and Sally became the proud new parents of a 5 lb. 4 oz. bouncing baby boy on Saturday, September 6. JUSTIN RYAN is the Hendrickson's first but the new father took it all in stride like a cool veteran. Dennis did state that he was glad Justin arrived when he did, as Dad would be awfully busy starting November 1 running his presidential election campaign.

We're seen in all the right places.



E-Z-GO
TEXTRON

STEGNER GOLF CARS
5900 UNIVERSITY AVENUE N.E.

Minneapolis 571-4230
Ortonville 839-2511

53rd Annual Turf Conference & Business Meeting December 3, 4 & 5, 1980



Sheraton Inn-Northwest

SHERATON HOTELS & MOTOR INNS. WORLDWIDE
INTERSTATE 94 & U.S. 52, BROOKLYN PARK, MINN. 55426

Featured Speakers

DR. JIM LATHAM
DR. WARD STIENSTRA
MR. LARRY VETTER
G.C.S.A.A. REP.
U.S.G.A. REP.

MR. HOWARD BARNHILL
DR. JOHN P. McNAMARA
DR. JAMES BEARD
DR. DONALD WHITE
DR. DON TAYLOR

Special Events

WEDNESDAY, DECEMBER 3
THURSDAY, DECEMBER 4
FRIDAY, DECEMBER 5

ANNUAL MEETING 4:00 P.M.
SMOKER 5:30 P.M.
THEME PARTY
COCKTAILS 6:30 P.M.
DINNER 8:00 P.M.
DANCING 9:00 P.M.

Registration

DECEMBER 3 11:00 A.M. - 1:30 P.M.
DECEMBER 4 & DECEMBER 5 7:45 A.M. - 9:00 A.M.

NOTE: Special Advanced registration mailing will be sent to all members at the end of October.

Lodging at the Sheraton Inn Northwest should be handled directly with the Inn. See Reservation Blank below.

Sheraton Inn-Northwest

Interstate 94 & U. S. 52
12 Meeting and Banquet Rooms
Guest Self-Service Laundry
Children under 18 Free in Parent's Room
Free Parking

SINGLE OUTSIDE \$37.00 - DOUBLE OUTSIDE \$45.00
SINGLE POOLSIDE \$44.00 - DOUBLE POOLSIDE \$53.00

**RESERVATIONS WILL BE HELD UNTIL
6:00 P.M. UNLESS GUARANTEED**

I may not arrive before 6:00 P.M. I wish to guarantee payment for my room (s). You may bill me at the address shown. I understand you will hold my reservation for late arrival. I may cancel this guaranteed reservation at any time prior to 6:00 P.M. of the day of my arrival.

(Guest Signature)

Reservations should be received _____ weeks
in advance of function date. _____

(Please Print)

NAME _____

ADDRESS _____

CITY _____ STATE _____ ZIP _____

PHONE AC(_____) _____

REPRESENTING _____

DATE OF ARRIVAL _____ TIME _____

NO. OF NIGHTS _____ NO. OF ROOMS _____

TYPE _____ RATE _____

NO. OF GUESTS _____

Adults Children

SPECIAL REQUESTS MGCSA TURF CONFERENCE

PARTICIPANT

FOLD HERE

1980 TOURNAMENT RESULTS

The 1980 edition of the M.G.C.S.A. Golf Tournament proved to be a well run, most enjoyable event. The weather was good with just a short shower late in the round to let everyone know who is still boss. Jim Lindblad had the course at its shining best and looking at the scores, the course came away the winner. Our thanks to Jim, ably assisted by George Jennrich for a fine afternoon and evening. The winners' pictures appear below.



THE LEADERS. Don Lindblad fired an 81 on brother Jim's course to capture low gross honors. Dan Hanson, left, second low gross, congratulates the champion.



BIG MONEY. Ted Stark, left, low gross guest and Bob Rogers, low net guest, display Pro Homer Martinson's Big Bucks prize.

Call US
for the best
in Turf Equipment,
The KROMER CO
612/472-4167



- *MYERS Sprayers
- *SMITHCO Red Rider, Trucksters, Sprayers,
Trap Rakes
- *HOWARD 48" to 82" Rotary Mowers
- *HECKENDORN 36" to 88" Rotary Mowers
- *TURF-VAC Leaf & Debris Vacuums
- *ROSEMAN Gang Mowers
- *DIADEM Fertilizer Spreaders
- *HEFTY Diesel & Gas Tractors
- *DAVIS 500 Golf Cars
- *KWH Blowers & Mist Blowers
- *TEX. REF. Tire Seal
- *WD-40 Preservative

KROMER CO

3455 County Road 44, Mound, Mn. 55364
TELEPHONE 612-472-4167

JOB OPENING: MECHANIC, ROLLING GREEN C.C.
FULL TIME POSITION -- IMMEDIATELY
SEND RESUME TO: RICK FREDERICKSON
ROLLING GREEN C.C., 400 EVERGREEN ROAD
HAMEL, MINNESOTA 55430

JOB OPENING: MECHANIC, WAYZATA COUNTRY CLUB
FULL TIME POSITION; GOOD FRINGE BENEFITS
WAGES COMMENSURATE WITH EXPERIENCE
START DECEMBER 1, 1980
CONTACT JIM LINDBLAD, 612/473-8849

For your **PEAT** And
TOP DRESSING
Needs

Contact:

COLBY PIONEER PEAT CO.
Box 8 Hanlontown, Iowa 50444
Phone: 515-896-2155



HIGH & LOW. Larry Vetter, left, was low gross associate and John Lightfoot once again snatched the highscore award with ease.



LOW NET. Wise use of handicap led to a low net win by Spence Nelson, left, with runner-up Carlos Stimson and their funny money.

NOT JUST A SPRAYER. A BETTER WAY TO SPRAY.

Cushman's Sprayer attaches to the 18-hp Cushman Turf-Truckster, a vehicle that's light enough to drive onto greens, and mobile enough to take into most turf areas that require spraying.

But the Turf-Truckster doesn't just give the sprayer mobility. The vehicle's optional PTO, which attaches directly to the transmission and the ground speed governor, keeps the spray rate consistent regardless of terrain, insuring accurate spray distribution and less chemical waste.

The Cushman Sprayer

has a lightweight, corrosion-resistant polyethylene tank.

And, a jet agitator that keeps solutions in constant suspension.

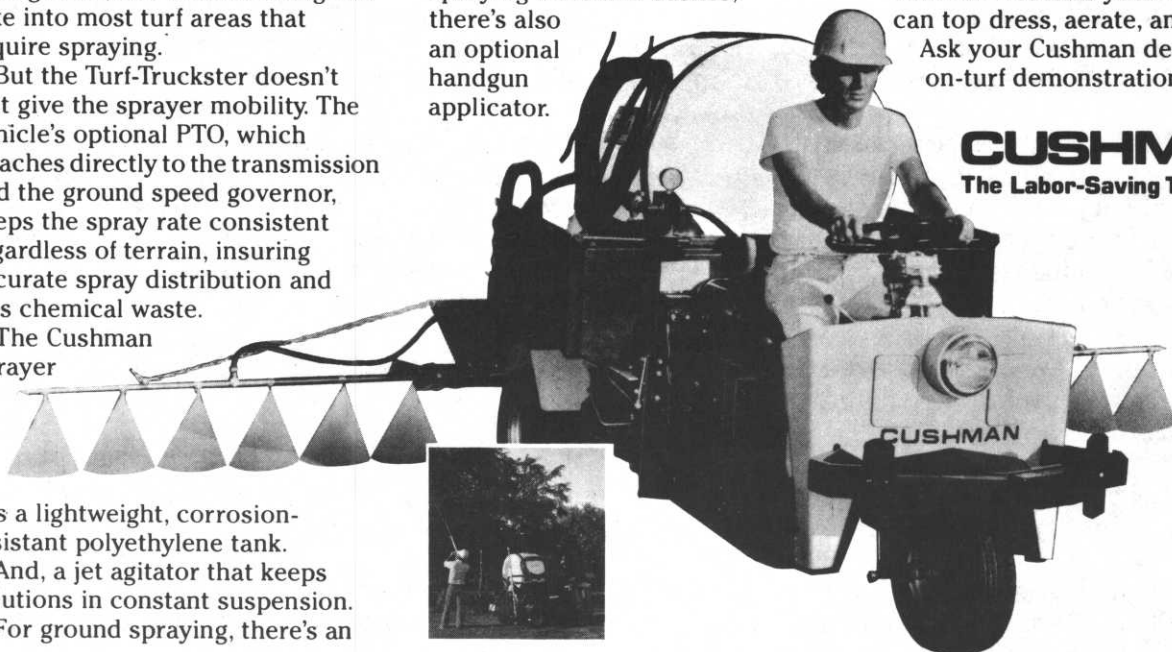
For ground spraying, there's an

optional 15' rear boom. Its two arms swing on 4-way hinges to let you maneuver easily between trees. For spraying trees and bushes, there's also an optional handgun applicator.

See for yourself how the Cushman Sprayer attachment gives you a better way to spray. And how with other accessories your Cushman can top dress, aerate, and dump.

Ask your Cushman dealer for an on-turf demonstration today.

CUSHMAN®
The Labor-Saving Turf System.



Jerry Commers
Tim Commers

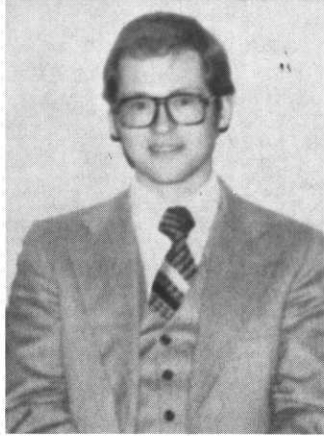
AUTHORIZED FACTORY
PARTS • SALES • SERVICE

CUSHMAN MOTOR CO., INC.

John Sniker

Bill Lancette

2909 E. FRANKLIN AVENUE • MINNEAPOLIS, MINNESOTA • PHONE: (612) 333-3487



DENNIS HENDRICKSON

New Research Project Approved

The following proposal has been received from Dr. Taylor, Dr. Blake and Dr. White by the Research Committee and has been approved by the Board of Directors of the M.G.C.S.A. Work will begin on this proposal as soon as possible.

TITLE: Sand Topdressing to Salvage Old Greens

PERSONNEL: D. H. Taylor, G. R. Blake, D. B. White

LOCATION: St. Paul Campus Experimental Farm
University of Minnesota

OBJECTIVES: (1) To determine the effectiveness of frequent sand topdressing treatments in converting old problem greens into manageable greens. (2) To compare unamended sand to various soil mixtures, as well as existing soil, as a topdressing material. (3) To compare a frequent topdressing program to the more traditional semiannual topdressing program.

NEED FOR STUDY: A topic of great interest and importance to golf course superintendents is the sand topdressing program. Many are already experimenting with it in one form or another. Although successful renovation of old greens has been achieved using this program in other parts of the country, results on golf greens here have been mixed. In some cases management problems have become severe when the sand layer at the surface has reached a depth of around one inch. The sand layer may become droughty and nutrient-deficient yet contain almost all the roots. If, however, these problems can be minimized or eliminated, a significant increase in the quality of the greens might be achieved and rebuilding costs could be greatly reduced. Detailed research on sand topdressing programs in this area would help determine the cause of some of the problems occurring and the benefits and disadvantages of frequent sand topdressings.

METHODS AND MATERIALS: Experimental field plots will be established at the University of Minnesota to assess the impact of various topdressing programs on the quality of turf. Three main plots will consist of differences in initial soil and turfgrass species. Each main plot will be divided into subplots on the basis of topdressing treatments.

Five topdressing programs are anticipated and will be evaluated continually for a period of ten years or more. The topdressing programs will consist of: (1) Biweekly topdressing during the growing season with sand; (2) Biweekly topdressing during the growing season with a sand-soil-peat mixture containing 90% sand; (3) Semiannual topdressing with sand; (4) Semiannual topdressing with sand-soil-peat mixture containing 70% sand; and (5) Semiannual topdressing with soil identical to the initial soil in the plots.

Plots will receive management practices similar to golf putting greens including compaction, semiannual aerification, fertilizer rates determined by soil tests, mowing height, frequency and irrigation.

COSTS: The initial costs of getting equipment, establishing field plots, and maintaining plots for the first year should be around \$1500, broken down as follows:

- \$700 equipment and supplies including a compaction unit;
- \$300 use and maintenance of existing equipment - seeder, aerifier, topdresser, mower, etc;
- \$500 student help in establishing and maintaining plots.

Following the first year, costs of maintaining the experiment should be less and will be evaluated at that time.



Vertagreen

A product for all reasons



- Uniform particles that flow smoothly and spread evenly.
- 48% of the nitrogen in slow release form.
- Uniform balance of secondary and micronutrients also in slow release form—Ca, Mg, S, B, Cu, Fe, Mn and Zn.
- All potash derived from sulfate of potash. Lower salt index makes it far less likely to burn.



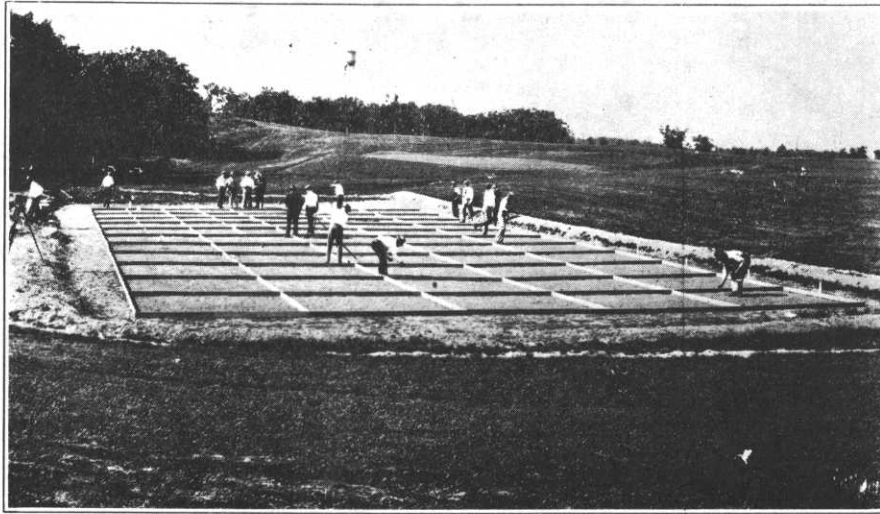
Agri-Chemicals

Division of United States Steel

P.O. Box 1685
Atlanta, Georgia 30301

HISTORIAN'S CORNER

The following report is a reprint from the Bulletin of the United States Golf Association Green Section dated February 1931. Remember, in 1930 Interlachen Country Club hosted the U.S.G.A. Championship in which Bobby Jones won the third leg of his Grand Slam.



Planting one of the Green Section's series of demonstration plots on the course of the Interlachen Country Club. The planting was done by the local greenkeepers' association

Greenkeepers' Association of Minnesota

By Erich W. Pahl

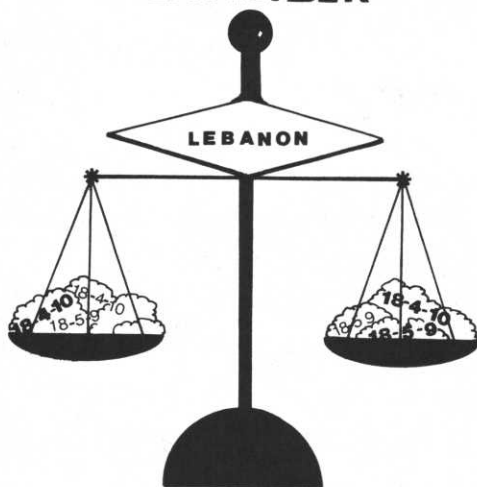
Our association was organized in April, 1928, out of a realization of the necessity for a permanent organization in Minnesota and parts of neighboring states. The purpose of our organization is to study the various problems concerning the greenkeeping of today and to help one another with our local problems. We often give advisory service when requested by others outside of our organization. We have two classes of members. The regular members are greenkeepers and assistant greenkeepers who have had at least 3 years of experience in actual work on golf courses in the United States or Canada; the junior members are those engaged in greenkeeping who do not qualify as regular members. Junior members have no voice in business meetings, but otherwise participate in the privileges of the association. The dues are \$3 a year for both regular and junior members. The association was organized with 17 charter members, and now has 26 regular members.

Our annual meeting is held the first Thursday in April, and regular meetings are held the first Thursday of each month. At the time of the National Open Tournament in July we held a meeting in cooperation with the United States Golf Association Green Section on the demonstration turf garden maintained at Interlachen by means of contributions from various local clubs in the district. In the evening our association held a meeting at the Nicollet Hotel, Minneapolis. Preceding the afternoon meeting Mr. Erickson gave a luncheon for greenkeepers at the Minikahda Club. Special meetings are called from time to time as particular problems develop on any course.

We are planning to increase the membership during the coming year, and to make several trips during the summer that will cover as many golf courses as possible in Minnesota and adjoining states. Some of our playing members have held very interesting golf matches at our meetings, and at our annual meeting in April, 1931, following the dinner, the question of holding a tournament will be discussed.

The officers of the association for 1930 were the following: President, Charles Erickson, Minikahda Club; vice-president, Leo J. Feser, Woodhill Country Club; treasurer, Victor E. Larson, Minneapolis Golf Club; secretary, Erich W. Pahl, Interlachen Country Club, Hopkins.

COUNTRY CLUB THE BALANCED FERTILIZER



.....a valuable asset....
in growing good turf

FOR MORE INFORMATION CALL
LEBANON CHEMICAL CORP.
P.O. Box 647 Danville, IL 61832

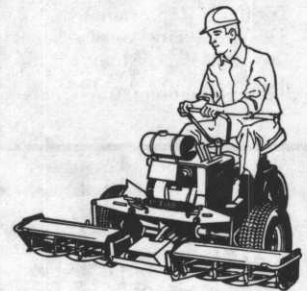
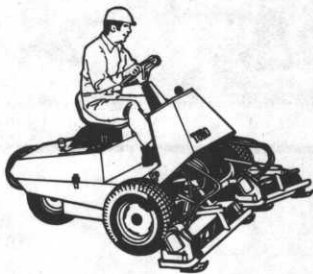
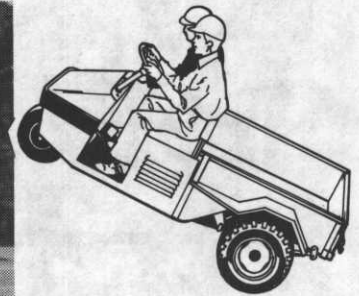
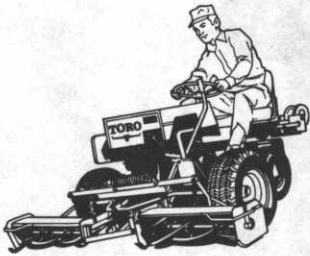
MAKE NEXT YEAR'S BUYING DECISION NOW



AT CURRENT PRICES



PAYMENT 1/3 DOWN & 2/3 IN 1981



BUYER'S BONANZA

FOR FURTHER INFORMATION CONTACT YOUR AREA SALES REPRESENTATIVE OR DAN EVAVOLD AT:



MINNESOTA TORO, INC.

14900 Twenty First Avenue North Minneapolis, Minnesota 55441

Phone (612) 475-2200

10/80