

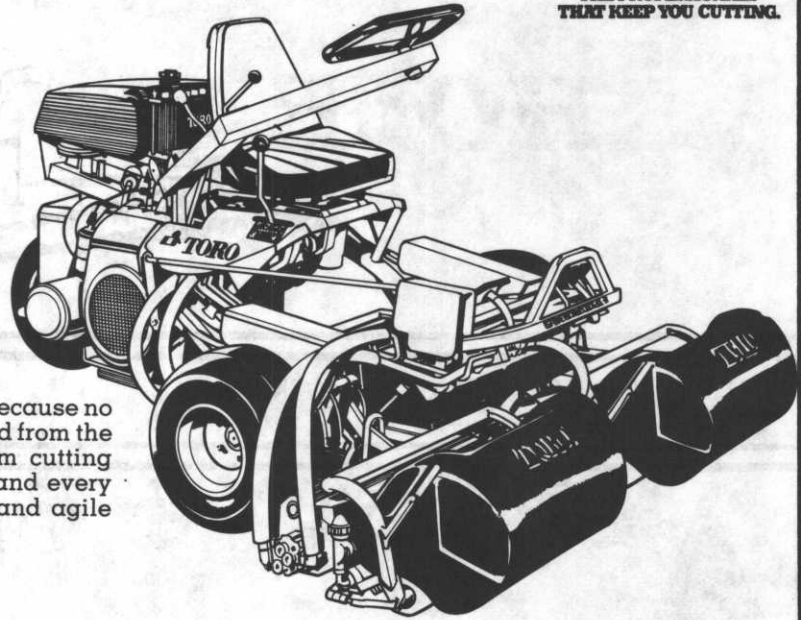
Greensmaster 3[®] The Professional without equal.



Quick disconnect reel motors simplify conversion from cutting unit to thatching reel or spiking reel.

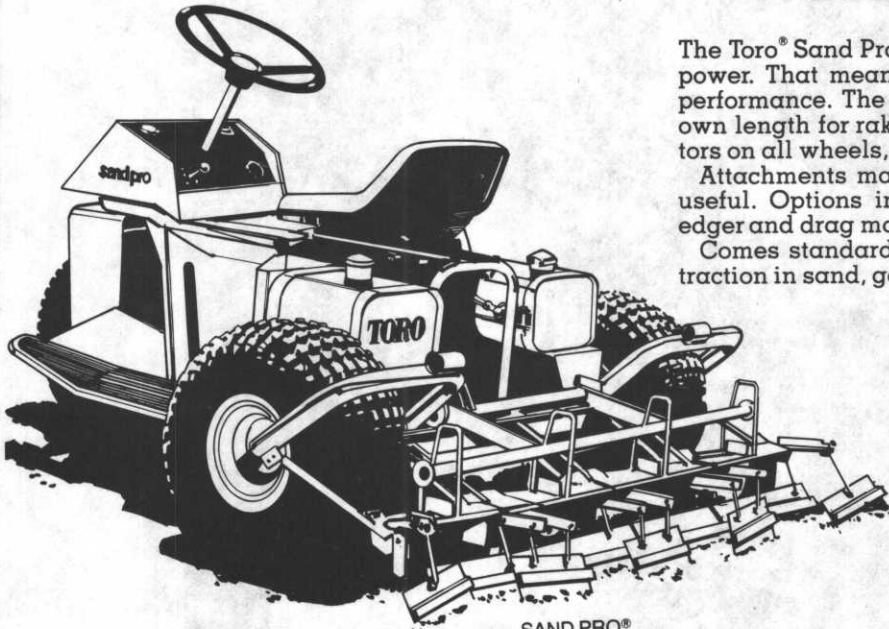
Customizing options include reel shutoff kit, quick height of cut adjustment, choice of 3 rollers, brush/scrapper.

The Toro[®] Greensmaster 3[®] is top ranked in quality of cut because no other greensmower in the world has cutting heads isolated from the traction unit and grass baskets. That means a uniform cutting height, appearance and playing characteristic to each and every green. Powered by a 14 HP Kohler engine, it is a fast and agile performer.



GREENSMaster 3[®]

Sand Pro[®] The Professional for performance.



SAND PRO[®]

The Toro[®] Sand Pro[®] is the only sand trap rake with total hydraulic power. That means lower maintenance, longer life and superior performance. The Sand Pro[®] maneuvers completely around in its own length for raking traps and tight "peninsulas." Hydraulic motors on all wheels, with no gears or belts to maintain.

Attachments make the Sand Pro[®] even more useful. Options include spiker, finish-grader, edger and drag mat.

Comes standard with ATV tires for excellent traction in sand, good flotation on greens.

MINNESOTA TORO, INC.

14900 Twenty First Avenue North Minneapolis, Minnesota 55441

Phone (612) 475-2200

DAN EVAVOLD



HOLE NOTES, official publication of the MINNESOTA GOLF COURSE SUPERINTENDENTS' ASSOCIATION.

EDITOR - WARREN J. REBHOLZ
6550 YORK AVENUE SOUTH
SUITE 301
EDINA, MINNESOTA 55435
PHONE - 612/927-4643

ASSOCIATE EDITOR - THOMAS P. MAGNE

MGCSA BOARD OF DIRECTORS FOR 1980

OFFICERS

PRESIDENT - RICHARD DESPLINTER
VICE-PRESIDENT - DENNIS HENDRICKSON
SECRETARY - LARRY MUELLER
TREASURER - JOHN NYLUND
EX-OFFICIO - GEORGE OSTLER

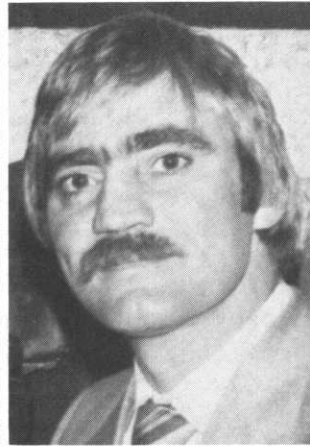
DIRECTORS

GERALD BIBBEY	JAMES LINDBLAD
ROGER KISCH	JERRY MCCANN
DON LINDBLAD	STEVE YOUNG

THE FOLLOWING IS A LIST OF OFFICE TELEPHONE NUMBERS FOR THE ENTIRE BOARD: AREA CODE 612

DICK DESPLINTER.....	537-1149
DENNIS HENDRICKSON.....	435-7759
LARRY MUELLER.....	884-1074
JOHN NYLUND.....	941-5117
GEORGE OSTLER.....	771-2628
JERRY BIBBEY.....	484-5261
ROGER KISCH.....	451-1666
DON LINDBLAD.....	755-2140
JIM LINDBLAD.....	473-8849
JERRY MCCANN.....	427-6110
STEVE YOUNG.....	473-7418

On the first day of school, each new kindergartner arrived home with a note from the teacher. It read, "Dear Parents: If you promise not to believe all your child says happens at school, I'll promise not to believe all he says happens at home."



FROM THE PRESIDENT'S DESK

Dick DeSplinter
Congratulations, Mr. John Lightfoot of Cloquet Country Club. John will retire this fall and his club is having a retirement party for him on September 27. John, the entire membership wishes you the best for a long and happy retirement.

Our Annual Tournament is history and Don Lindblad's 81 was the best score this year. Congratulations, Don, I had more strokes than that before I left the practice putting green.

On behalf of all the tournament participants thank you, Host Superintendent Jim Lindblad. Also a special thank you to everyone at the Wayzata Country Club. Jim was also tournament chairman for which he did a beautiful job of organizing a very successful event. Jim, the course was beautiful and I'm at a loss for words to describe the great condition of the grounds. One thing I do know is that your efforts in the maintenance of course has created an awful lot of job security for you.

Next month's meeting will be at the Hastings Country Club where Host Superintendent Steve Schumacher will entertain us for the afternoon.

Mark your calendars for October 13 because it will be our last golf outing of the year.

The course will be a pleasant surprise to you who have not played it. It's not easy by any means and has many holes that require a fine golf shot to achieve par.

This is also a good time to encourage potential new members to come to the meeting and get their applications acted upon. Then they will be all set to enjoy the benefits of membership when the Turf Conference rolls around in December.

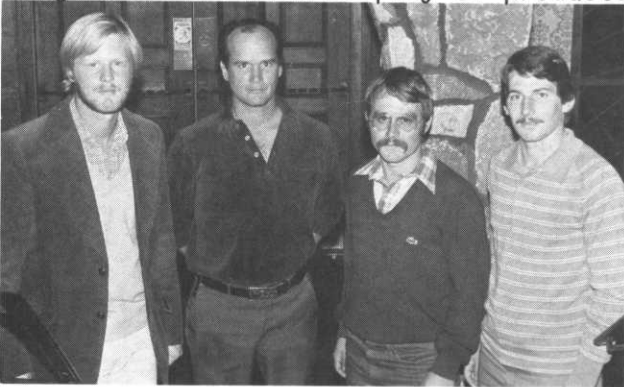
NOVEMBER MEETING HIGHLIGHTS



COCKTAIL HOSTS. Left to right, Verlin Røttøfs, Don Merschman and Jim Cox of Long Lake Ford with display of products.



INSPECTION. Orland Maenke, left, and Bill Johnson look over heavy equipment of Long Lake Ford.



WELCOME. New Members accepted at November meeting are left to right, Paul Feldhake, Jim Reiter, Mike Lehrer and Rick Carr.

IT'S NOT ALWAYS THE YIPS. . . .

The average golf shoe has 12 spikes, and the USGA has computed that a player averages 28 paces per green; 28 paces times 24 means 672 impressions; 672 impressions times 18 greens equals 12,096 impressions per round per player. Assuming 200 rounds are played each day on a course, the greens receive 2,419,200 impressions daily - or more than 72 million holes each month. And you wonder why you can't sink a putt!

We're seen in all the right places.



**E-Z-GO
TEXTRON**

STEGNER GOLF CARS
5900 UNIVERSITY AVENUE N.E.

Minneapolis 571-4230
Ortonville 839-2511

REFLECTIONS ON THE YEAR, 1980

DENNIS HENDRICKSON, Vice-President
Co-Chairman Research Committee

This year has been a great year for the M.G.C.S.A. There have been many positive things accomplished. Among them are the beginning of a Research Program for sand top dressing at the University of Minnesota. This year we are also adding a Fellowship Breakfast to the program at the Annual Conference. It will be held at 8:00 a.m. on Thursday morning at the Sheraton N.W. Rolls and coffee will be served. An interesting program is planned. Pastor Del Roy Johnson, once a golf course superintendent himself, will be the speaker. We hope to see you all there. More changes are already under study to better serve the membership of M.G.C.S.A. in 1981. I'd like to take this opportunity to wish all the readers of HOLE NOTES a Happy and Blessed Holiday Season.

LARRY MUELLER, Secretary

1980...What a year! It was a very challenging season for golf course maintenance at Minnesota Valley. We started out with considerable winter kill which necessitated playing seven temporary greens while we reestablished the damaged ones. In July we had a severe wind storm that took many trees and forced us to close the course completely for three days. Pythium also seemed to be more of a problem this year along with other turf diseases. Good communication and full cooperation from club officials and crew played a large part in our being able to provide the membership a good golf course during most of the season.

JOHN NYLUND, Treasurer

It has been a very rewarding and enlightening experience to be able to serve our association as treasurer this past year. I believe our association is supporting programs that will be of great benefit to us all in continually upgrading our profession. I would like to thank all the members for their cooperation in the payment of dues. It made my job a whole lot easier. As the holidays approach I feel we are all grateful for the past season and look forward to the next. It's a relaxing time of year and well deserved by all superintendents. I would like to extend holiday wishes to all superintendents and their families.

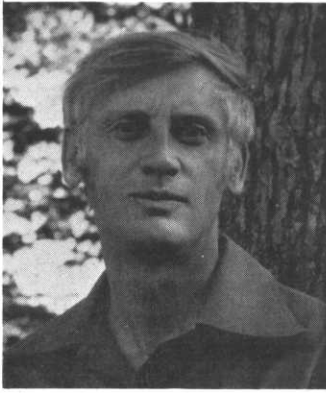
DONAVAN LINDBLAD, Chairman
Educational Committee

My first year as a M.G.C.S.A. Board Member has been very educational. Learning some of the workings of this association was eye opening! The responsibilities entailed trying to keep your committee moving, starting with the spring Mini-Seminar and working toward the Turf Conference in the fall. A special thanks to my committee of Jim Nicol, Jim Lindblad, John Nylund and President Dick DeSplinter for all their help in making 1980 interesting, informative and fun. Happy Holidays.

JERRY MCCANN, Chairman
Arrangements Committee

It seems to me that our organization is a very good one indeed. There are many men in our association who, because of their time, education and talent, have held together an organization of individuals who have a very special interest in golf courses. We as members benefit from this organization commensurate with what we put into it. I want to encourage every member to get active and become involved. The time you invest working for your association will pay fantastic dividends.

Continued on Page 6



SECRETARY'S UPDATE

EXECUTIVE COMMITTEE MEETING - NOVEMBER 10, 1980

LARRY MUELLER

President DeSplinter sent a letter to the University of Minnesota telling them not to plan a program around the Superintendents' Association. A program from the University of Minnesota was received. Thank you letter from Jim Osborn for the contribution to the Sand Topdressing Research Program at the University was received. Thank you letter received from the National Association for contribution to the Research Fund. A one million dollar contribution to University Professorship was received from Mr. Bailey of the Bailey

Nursery. President DeSplinter received a request from Bergerson Caswell Well Co. for a hospitality room during Annual Conference.

TREASURER'S REPORT: \$3,261.34 Checkbook. \$2,927.26 Research Fund.

Proposed bylaws were discussed. Each bylaw will be voted on separately.

The following classification changes were approved: John Jacobsen to Class B;
Doug Mahal to Class B.

Tim Commers of Cushman Motors approved as a Class F Member.

The following membership applications were approved:

Jim Reiter, Montgomery Golf and Recreational, Class B.

Paul Feldhake, Interlachen C.C., Class D.

Richard Carr, Minnesota Valley Club, Class D.

Dick DeSplinter discussed having some type of recognition for people who write articles for HOLE NOTES.

No CPR classes will be offered at the Conference. Casino night is also out.

Possible dates and sites have been set for next year. January meeting will be at Izaty's on Mille Lacs Lake.

The 1980 Annual Tournament showed a \$250.00 loss.

The committee will ask Don Taylor for a report of the Turf Symposium in Wisconsin on Sand Topdressing.

The conference was discussed at length. Everything is set!

Call US
for the best
in Turf Equipment,
The KROMER CO
612/472-4167



- *MYERS Sprayers
- *SMITHCO Red Rider, Trucksters, Sprayers, Trap Rakes
- *HOWARD 48" to 82" Rotary Mowers
- *HECKENDORN 36" to 88" Rotary Mowers
- *TURF-VAC Leaf & Debris Vacuums
- *ROSEMAN Gang Mowers
- *DIADEM Fertilizer Spreaders
- *HEFTY Diesel & Gas Tractors
- *DAVIS 500 Golf Cars
- *KWH Blowers & Mist Blowers
- *TEX. REF. Tire Seal
- *WD-40 Preservative

KROMER CO

3455 County Road 44, Mound, Mn. 55364
TELEPHONE 612-472-4167

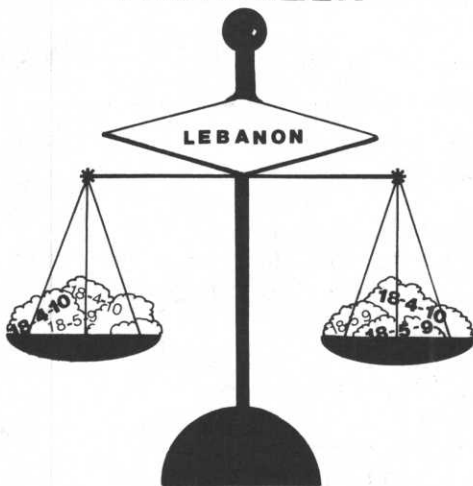
Continued from Page 4

I am proud to have served on the Board of Directors this past year. I thank our president, Dick DeSplinter, and the rest of the Board for being so cooperative and also you members who have attended our monthly meetings. I hope each and every one of you will attend our annual meeting and conference next month. The best of luck to you all and may the joy and peace of Christmas be with you today and throughout this coming year.

ROGER KISCH, Chairman
Editorial Committee

Last December I was elected as a member of the Board of Directors. At that time I had no idea what it took to run an association of the size of ours. The monthly board meeting is only a small part of the board members' participation. I am Chairman of the "HOLE NOTES" Committee, just one of the many committees. Other committees such as Research, Membership, Conference, etc., take a tremendous amount of time and effort on the part of the board members that chair and participate on respective committees. Through my close association with M.G.C.S.A. I realize the importance of members giving their talents to our association through participation as board members, committee members and officers. The M.G.C.S.A. member, himself, should attend meetings as regularly as possible, get involved in the educational seminars and share ideas with other members. It's fun to come to play golf and socialize, but we should take a little time and try and share and gain knowledge with fellow superintendents.

COUNTRY CLUB THE BALANCED FERTILIZER



.....a valuable asset....
in growing good turf

FOR MORE INFORMATION CALL
LEBANON CHEMICAL CORP.
P.O. Box 647 Danville, IL 61832

GARAGE SALE USED TURF EQUIPMENT BARGAINS GALORE!! ACT NOW

- 1 Ryan Greensaire 18" w/B&S Engine-\$375.00
- 1 1975 Howard 60" Rotary Front Mount Mower w/2 cyl. Wisc. Engine - \$1,095.00
- 1 Hahn Spiker - like new - w/4 H.P. B & S Engine - \$225.00
- 1 1978 Jacobson 70" Triplex Trimmer w/8 H.P. Kohler Engine - \$600.00
- 1 1979 Jacobson 70" Triplex Trimmer w/8 H.P. Kohler Engine (needs rings)-\$500.00
- 1 1978 National 84" Triplex Mower w/12 H.P. Kohler Engine and Ball-Bearing Rollers - \$1,995.00

~~1 1967 Cushman Turf Truckster, Clean w/P.T.O. - \$895.00~~ **SOLD**

SALES • SERVICE • PARTS

CUSHMAN MOTOR CO., INC.
2909 E. Franklin Avenue • Minneapolis, Mn. 55406
PHONE: 612 • 333-3487

TROUBLESHOOTING YOUR CHAIN SAW

For many people, winter's onset means that it's time to lay in a supply of firewood. Others will take advantage of the slow season to clear away unwanted brush and dead trees. Whatever the reason, it's time to get your chain saw running right.

If yours doesn't sound quite right, or if it isn't cutting properly, the problem might be a simple one that you could correct easily. Check in your owner's manual for a troubleshooting guide which correlates symptoms with possible mechanical problems and corrections. If your manual is lost, refer to this guide prepared by the John Deere Company, Moline, Ill.

1) Poor cutting. First, check the chain. It may be dull or have been improperly sharpened. Also, while wearing gloves, check the chain tension by lifting the chain at the center of the guidebar until the bar itself lifts up. The bottom of the drive lug should be flush with the top of the guide bar. Is the guide bar damaged? Is the chain installed backward? Always put the chain on the guide bar so that the top cutting edges face the nose of the bar.

If the chain and guide bar check out, then the problem may be in the power supply. Check for dirt in the exhaust ports and muffler, and look for a dirty fuel filter. Finally, adjust the carburetor.

2) Oiler not working. Maybe it's simply out of oil, or the oil supply hole is plugged. See if the oil strainer is dirty. Perhaps the vent in the oil tank cap is plugged. Be sure the oiler is adjusted correctly.

3) Engine won't start. Read the operator's manual or call a dealer to check the proper starting procedure. It could be out of gas or simply flooded. If the sparkplug is fouled, replace it. Check the carburetor adjustment.

4) Engine dies or accelerates poorly. This problem can be caused by a fouled spark plug, a dirty air cleaner, or plugged vent on the fuel tank cap. Maybe the saw simply ran out of gas. The carburetor could be adjusted incorrectly.

If you check the problems listed here and the symptoms persist, take the chain saw to a dealer who offers repair service.

Reprint FORE FRONT

GCSAA NEWS

GCSAA's annual membership meeting, including election of officers for the 1981 term will be at 2:00 p.m., January 28 in Anaheim. The following slate of candidates has been nominated.

PRESIDENT: Michael R. Bavier, CGCS, Inverness G.C., Palatine, Ill.

VICE-PRESIDENT: David C. Holler, CGCS, Riviera C.C., Coral Gables, Florida
James A. Wyllie, CGCS, Bayview C.C., Thornhill, Ont.

DIRECTOR: Eugene D. Baston, CGCS, Birmingham (Ala.) Country Club
Riley L. Stottern, CGCS, Jeremy Ranch C.C., Salt Lake City, Utah
Cary L. Tegtmeyer, CGCS, Topeka (Kan.) Country Club
Robert R. Wilson, Oak Hills C.C., San Antonio, Texas



The R.L. Gould Co.

Extends Best Wishes For
Your Holidays And For
Many Pleasant Associations In 1981

STANDARD



JACOBSEN

Husqvarna

LINDIG
COUNTRY CLUB



ELANCO

GIANT-VAC



Bean. FMC

GORDON'S



Tee Time

TUCO

TURFCO



RYAN



W.A. CLEARY

VELSICOL Cyclone



R.L. Gould Co., 3711 Lexington Ave. No., St. Paul, MN / (612) 484-8411

ADVANCE REGISTRATION

The Golf Course Superintendents Association of America's

52nd INTERNATIONAL TURFGRASS CONFERENCE AND SHOW

January 25-30, 1981

Anaheim Convention Center, Anaheim

IMPORTANT: Conference badges and mailing lists are prepared from the information you provide on this form. PLEASE PRINT OR TYPE ALL INFORMATION CLEARLY AND EXACTLY AS YOU WANT IT TO APPEAR. Only one registration per form. Photocopies are acceptable.

name _____ phone _____ class & member no. _____

nickname (if you would like it on your badge) _____ spouse's name (if attending) as it should appear on badge _____

mailing address _____ street _____ city _____ state _____ zip _____

club/firm/university _____ phone _____

club/firm/university's address _____ street _____ city _____ state _____ zip _____

Your primary professional area:

- _____ golf course superintendent
- _____ sod production
- _____ nursery
- _____ parks and recreation
- _____ cemetery
- _____ golf course architecture/construction
- _____ landscaping
- _____ irrigation
- _____ turfgrass educator
- _____ turfgrass student
- _____ other _____

REGISTRATION FEES

	number	amount
Advance Member Registration - \$45 (includes free cassette)	_____	\$ _____
Advance Non-Member Registration - \$65 (includes free cassette)	_____	\$ _____
Ladies' Program - \$25	_____	\$ _____
Banquet, Show and Dance - \$20	_____	\$ _____
Voting Delegates' Lunch - \$5 (official chapter voting delegates only)	_____	\$ _____
Disneyland Fun Day - \$8*	_____	\$ _____
Harlem Globetrotters - \$6*	_____	\$ _____
Golf Course Tour - \$8	_____	\$ _____
Monday Prayer Breakfast - N/C	_____	\$ _____
TOTAL		\$ _____

*Nonrefundable

GCSAA USE ONLY

date received _____

check # _____ amt. _____

Advance Registration Deadline: Dec. 31, 1980

Do not detach — do not write below this line

GCSAA 52nd INTERNATIONAL TURFGRASS CONFERENCE AND SHOW

January 25-30, 1981

Anaheim Convention Center, Anaheim

name _____

class and member number _____

THIS RECEIPT WILL BE RETURNED TO YOU.

You must present it at the preregistration area in the Anaheim Convention Center, where you will receive your conference materials. **NO REFUNDS will be made for any conference or show related materials after 9:30 a.m. Monday, Jan. 26, 1981.**

We are pleased to acknowledge receipt of your advance registration for the following items:

- Member Registration — \$45 _____
- Non-Member Registration — \$65 _____
- Ladies' Program — \$25 _____
- Banquet and Show — \$20 _____
- Voting Delegates' Lunch — \$5 _____
- Disneyland Fun Day - \$8* _____
- Harlem Globetrotters — \$6* _____
- Golf Course Tour — \$8 _____

*Nonrefundable

TOTAL \$ _____



Vertagreen

A product for all reasons



- Uniform particles flow smoothly and spread evenly.
- Half the nitrogen in Tee Green is Urea-Formaldehyde.
- A minimum of one-fourth the nitrogen in fairway grades is UF.
- Uniform balance of secondary and micro-nutrients in slow-release form — Ca, Mg, S, B, Cu, Fe, Mn and Zn.
- All potash derived from sulfate of potash.
- Polyethylene packaging.

Distributed By

MINNESOTA TORO, INC.



Agri-Chemicals

Division of United States Steel
P.O. Box 1685
Atlanta, Georgia 30301