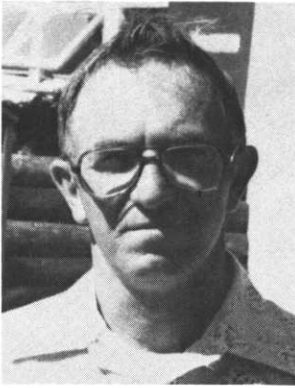


MEET YOUR SUPERINTENDENTS !



QUENTIN CASTLE knows more about the Redwood Falls Golf Club than any other living person. Not only is he a lifelong resident of Redwood Falls, but he has also devoted twenty-two years of his life to the care and upkeep of his hometown golf club. A member of M.G.C.S.A. since 1966, Quentin worked for five years on the grounds crew right out of high school and then after a short leave of absence, returned as Golf Course Superintendent, a position he has capably filled for the past seventeen years. Seven greens have been rebuilt, all the tees have been renovated and a new semi-automatic irrigation system has been installed since Quentin took over the reins. Quentin is also an excellent carpenter, having built the home in which he and his wife, Letha, and their five children now live.



MIKE ROACH is the Golf Course Superintendent at the Hillcrest Country Club in Eau Claire, Wisconsin. Hillcrest is an 18-Hole Par 72 course whose original nine holes were built in 1927 and a second nine added in 1970. It was at this time, ten years ago, that Mike joined the staff at Hillcrest and he has since nurtured this course into a beautiful, challenging layout. Prior to accepting the position at Hillcrest, Mike was engaged in farming and he has now also completed the two year program at Anoka Vo Tech to widen his background in turf care. Mike has been a member of M.G.C.S.A. since 1970 and rarely misses a turf conference or educational session where he is able to pick up some more valuable ideas. Mike and his wife, Paula, have four children, three girls and a boy, ranging in age from eleven to eighteen.

Minnesota Golf Course Superintendents' Association



Suite 301
6550 York Avenue South
Edina, Minnesota 55435

**HOLE
NOTES**