



3711 Lexington Avenue North
St. Paul, Minnesota 55112



612-484-8411



**NOW YOU SEE IT...
NOW YOU STILL SEE IT!!!!**

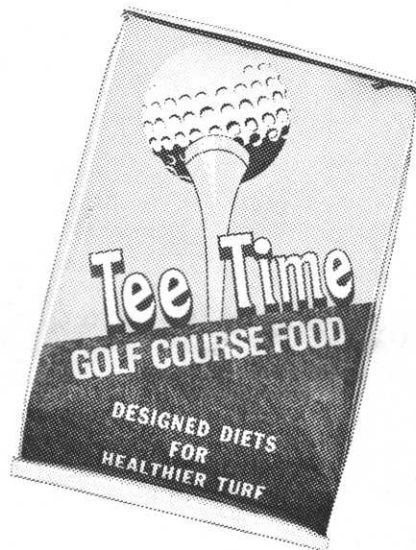
**NS
56**

**THE MAGIC TRICK
THAT DOESN'T DISAPPEAR!**

NS/56 is the newest form of slow release nitrogen available. NS/56 is a combination of 32% nitrogen and 24% sulfur fused together to feed grass as it needs it.

NS/56 keeps feeding your grass nitrogen and sulfur without stopping . . . regardless of soil temperature or bacteria action. A surgeless release from spring through fall completely available in one growing season. NS/56 is the highest concentration of slow release major and secondary nutrient available in one prill.

**NS/56 MAKES YOUR GRASS
GLAD TO BE ALIVE!**



**LET
US
FILL
IN
THE
D
E
T
A
I
L
S**

1979 Summer Turf Research Report

BY DR. WARD STIENSTRA
DEPARTMENT OF PLANT PATHOLOGY
UNIVERSITY OF MINNESOTA

The golf turf research program during the summer of 1979 had its ups and downs. It started without technical help and the first attempt to apply fungicides resulted in discovery of a lost sprayer. The second attempt was rained out. Since then, materials have been applied and data was recorded. It was a good year for plot work. Pythium Blight - yes Pythium Blight as well as Dollar Spot fungi performed very well. Fertilizer-disease interaction studies were continued from 1978 and similar results were obtained. Fall applied fertilizer relative to snow mold development is being repeated at one location this year.

Pythium Blight, this study really had its start in 1978 with unexplained losses of turf. At that time Pythium was implicated but not isolated. Symptom development was rapid but not completely typical of Pythium Blight. Earlier the presence of this turf problem may have been compounded with or confused by Anthracnose. At Interlachen, test plots on fairway #14 were established. The first attempt to treat was interrupted by the lack of a sprayer which did later materialize. The second attempt found us on the fairway ready to treat with different equipment and a rain storm prevented application. Pythium Blight did get started on the test area before the chemicals were applied. Excellent results were achieved with two experimental products - CIBA GEIGY 48988 and a Nor-Am chemical material as a liquid and a granular formulation.

The check area was not much worse than the area treated with 4 oz of Chloroneb, in other words in this test Chloroneb provided little disease control and required re-application 5 days later. CIBA GEIGY 48988 at 5 oz performed well but did have a little more disease than the 10 oz rate which controlled Pythium Blight 100%. The Nor-Am liquid formulation performed slightly better than the granular formulation, which also appeared to be somewhat less active. These two materials may be available in 1980 under an experimental use permit or full label. I hope to test these excellent materials again in 1980.

Dollar Spot, the Dollar Spot fungicide test was at the University of Minnesota where 12 treatments were applied starting on August 8. Dollar Spot developed earlier at the campus turf research area but several weeks were required before the disease was established on the test plot area. Thus when spraying began the disease was well established on the entire area and on the test plots. The check area, unsprayed, the week after spraying began, had an average of 61 spots per 44 square feet. The disease pressure was high (abundant inoculant in the plot area) and the disease was present in all plots at a level greater than what most superintendents would permit. This was a curative-catchup test and that may explain why several products performed poorly during the early weeks of the test. The results therefore may not reflect what would be expected under golf course management programs or your results should be better. This was a severe test of the products ability to stop the disease and to prevent re-entry. The data are present in table form.

The value of systemics, like benomyl is clearly evident; long term control. This test also suggests as did last year's results that 1 oz of RP26019 is marginal when applied every two weeks, even the 2 oz rate started to fail at the end of two weeks. Daconil 4F at 3 fl oz and 6 fl oz provided inadequate control for several weeks of the test, while the 11 fl oz rate checked the disease after the second application. The experimental products performed well and CIBA GEIGY 64251 also produced a darker green color. The rates of CIBA GEIGY 64251 are very low, less than half the active ingredient equivalent of benomyl.

Continued on Page 3

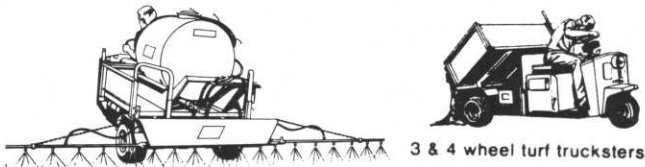
Continued from Page 2

Disease fertilizer interaction studies at Duluth, Rochester, Campus and Oak Ridge produced little data different from last year's results. The Duluth and Oak Ridge plots had no disease development, while Dollar Spot at Rochester damaged the test area. No relationship to fertilizer was recorded and Kurt Erdmann did apply a fungicide to stop this disease. At Duluth, in high peat soils some clear differences were noted. The performance of all materials at all locations was judged adequately relative to color and vigor of the grass. Products applied to test greens include: Scotts 22:0:16, Howes Turf Special 20:5:10, Par Ex 31:0:0, Par Ex 20:0:16, Ammonium nitrate 34:0:0, Ammonium sulfate 21:0:0, Milogranite 6:2:0 at 1 lb actual nitrogen per 1000 sq ft in the week of June 4, July 9, August 6 and September 7. A final application will be made when the fungicides are applied in October or November. Fertilizer at Oak Ridge was applied twice and a third application is planned before snow mold fungicides are applied this fall. Even under low nitrogen, no summer disease developed at Oak Ridge. The effect of fall applied fertilizer at Forest Lake is being repeated and other than a color and growth response at this time, no data is available. Next spring the plots at Oak Ridge and Forest Lake should be of real interest.

1979 DOLLAR SPOT TEST PLOT RESULTS ON PAGE 4

OUR 30th YEAR WE SELL THE BEST

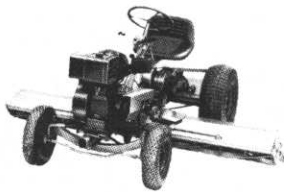
CUSHMAN® TURF-CARE EQUIPMENT



3 & 4 wheel turf trucksters

NATIONAL MOWER COMPANY

SINCE 1919



Exide® Willard® THE BEST ELECTRIC VEHICLE BATTERIES IN THE INDUSTRY

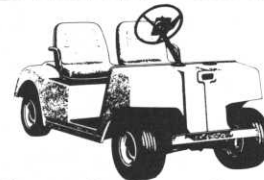
Jerry Commers

PARTS • SALES • SERVICE

CUSHMAN MOTOR CO., INC.

2909 E. FRANKLIN AVENUE • MINNEAPOLIS, MINNESOTA • PHONE: (612) 333-3487

Club Car®



"America's Fastest Growing Golf Car Company"



TILT DECK and RAMP LOADING TRAILERS

GOOD YEAR

GOLF CARS, TRUCKSTERS, INDUSTRIAL TIRES

John Sniker

Bill Lancette

1979 Dollar Spot Test Plot Results

Product	Rate / 1000 sq ft	Treatment applied					Average Number of Infection Sites Per Plot					
		8/8	8/15	8/24	8/24	8/30	9/6	9/6	9/13	9/19	9/26	10/3
Tersan 1991	1 oz product	T	7	1		0	2	T	1	0	0	0
RP26019	1 oz product	T	15	100	T	26	100	T	1	3	0	0
RP26019	2 oz product	T	13	27	T	1	2	T	1	4	1	0
Daconil 2787 4F	3 fl oz "	T	19	100	T	33	100	T	10	20	3	0
"	6 fl oz "	T	18	87	T	8	17	T	2	4	0	0
"	11 fl oz "	T	8	24	T	1	1	T	0	0	0	0
Ciba Geigy 64251	2 gms ai	T	15	29	T	4	23		46	50	30	5
"	4 gms ai	T	9	10	T	1	2		8	21	5	0
"	8 gms ai	T	19	3	T	1	0		0	1	1	0
BFN8090 (Boots Chem)	0.5 oz ai	T	83	75	T	15	90	T	10	17	0	0
"	1.5 oz ai	T	33	75	T	3	34	T	1	1	0	0
"	3.0 oz ai	T	12	27	T	2	21	T	0	0	0	0

PLOT SIZE 44 square feet

6 ANSWERS TO QUESTIONS WE NEVER THOUGHT YOU'D ASK (BUT DECIDED TO ANSWER ANYWAY)

1 **Yes, GCSAA can help you become a better superintendent.** One way it does this is through educational seminars and conference sessions it sponsors each year to help you become better informed about turfgrass diseases, pesticides, landscaping and management practices.

2 **Yes, GCSAA is helping to further the advancement of the turfgrass industry.** Through the GCSAA Scholarship & Research Fund, Inc., GCSAA provided more than \$13,500 last year in research grants to leading turfgrass programs. GCSAA also provides educational opportunities to turfgrass students through annual turfgrass scholarships.

4 **Yes, GCSAA offers recognition for superintendents.** Through its public relations efforts, its magazine, and its award programs, GCSAA helps promote the image and the professionalism of the superintendent. GCSAA also provides information to superintendents about how they can use public relations to promote their own image to their course, their community and their association.

3 **Yes, GCSAA provides a meeting ground for superintendents.** Each year, GCSAA sponsors an annual conference and show for its members. Last year more than 6,500 educators, industry representatives and members from all over the world attended. GCSAA's executive committee decided at its last board meeting that the conference experience is so valuable that first-year members should be encouraged to attend by being given free admission.

5 **Yes, GCSAA provides each member with a life insurance program.** Supplemental insurance, disability and pension programs also are available.

6 **No, GCSAA can't help you with your golf handicap.** You'll have to work on that yourself.



GCSAA

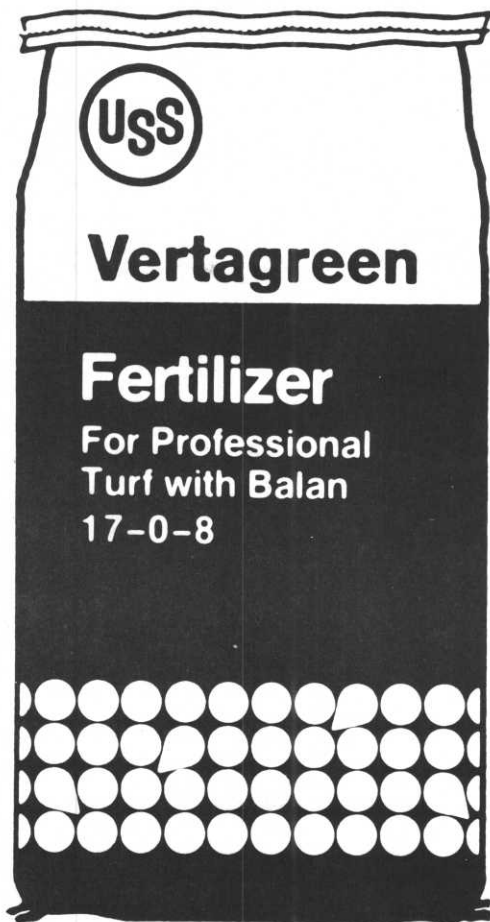
The association that offers you
more than just a name.

1617 ST. ANDREWS DRIVE • LAWRENCE, KANSAS 66044
913 / 841-2240



Vertagreen

A product for all reasons



- Balan offers pre-emergence control of Poa Annua, crabgrass, goose grass, water grass and foxtail.
- Uniform particles flow smoothly, spread evenly.
- One-fourth the nitrogen is Urea-Formaldehyde
- Contains secondary and micro-nutrients — S, B, Mn, and Zn.
- All potash derived from sulfate of potash.



Agri-Chemicals

Division of United States Steel

P.O. Box 1685,
Atlanta, Georgia 30301

Distributed By

MINNESOTA TORO, INC.

ROBERTSON



71" and 61"
FRONT ROTARY TRACTOR MOWER
 19 or 30 HORSEPOWER
 GAS OR DIESEL ENGINE

TURF CARE PRODUCTS
ANOTHER QUALITY LINE!!
 IS NOW AVAILABLE FROM ROBERTSON

BUNTON

COMMERCIAL LAWN-TURF EQUIPMENT

- FIRST TRACTOR-MOWER WITH A DIESEL
- EXCELLENT VISIBILITY
- OPTIMUM HANDLING EASE
- ZERO TURNING RADIUS
- SUPERIOR RUGGEDNESS (7 GAUGE STEEL)
- EASY ACCESS FOR SERVICING
- LOWER NOISE
- SNOWPLOW & BROOM AVAILABLE
- FOUR DIFFERENT ENGINE OPTIONS



GAS OR DIESEL
 32" - 36" - 52"
 AVAILABLE IN BATTERY START



BUNTON
 SELF PROPELLED MOWERS
 24-28-32-36-OR 52" WIDTHS
 CUT ANY HILLSIDE YOU CAN WALK



VARIABLE SPEED DRIVE
 FOR FINE TURF OR ROUGH AREAS
 SULKY RIDER AVAILABLE

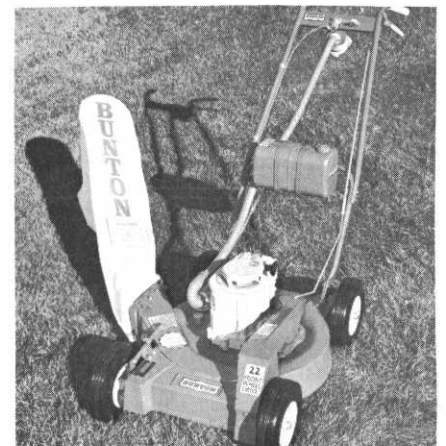


EASY EMPTY GRASS CATCHER
 CHOICE OF 8 ENGINE
 OPTIONS - GAS OR DIESEL

BUNTON

LAWN-TURF EQUIPMENT

- RUGGEDLY BUILT
- LONG LIFE
- LOW DOWNTIME
- SICKLE STEEL BLADES
- FINGER TIP CONTROLS

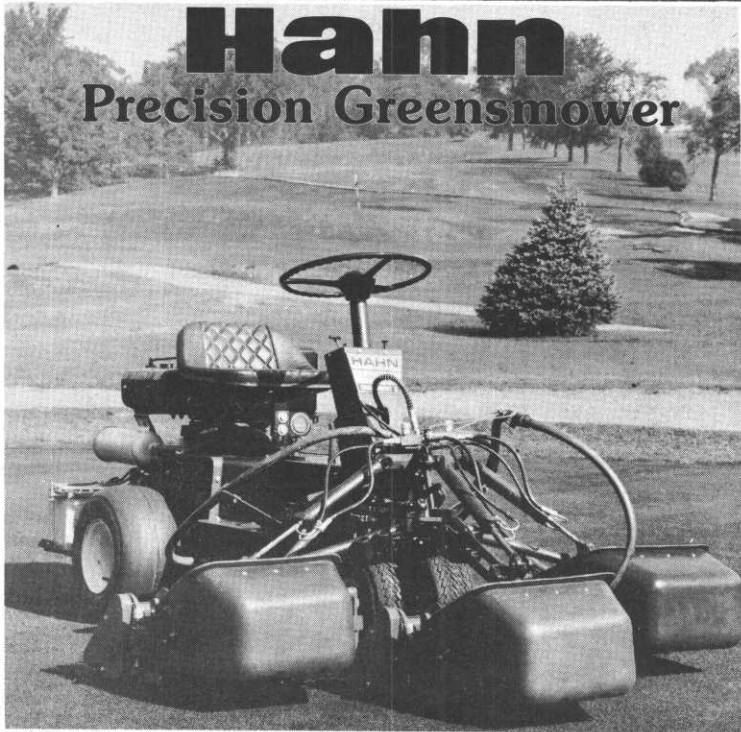


18 - 21 & 22" MOWERS
 PUSH TYPE & FRONT WHEEL DRIVE
 LARGE STEEL WHEELS WITH
 GREASE FITTINGS

MADE IN USA

IS PROUD TO ANNOUNCE.....
 WE HAVE BEEN APPOINTED
 THE EXCLUSIVE MIDWEST
 DISTRIBUTOR FOR

HAHN
 HANSON
 BUNTON

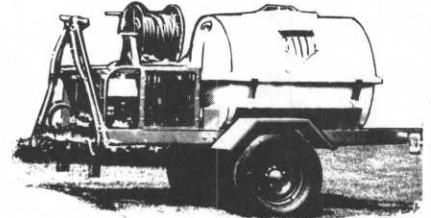
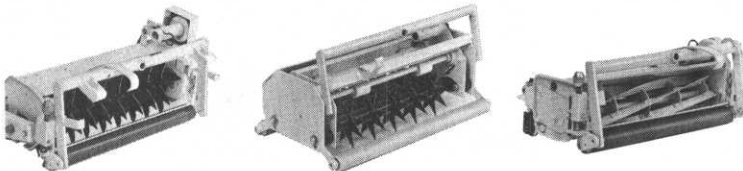


Hahn
 Precision Greensmower

Hahn Tournament 1202

NEW QUICK-ADJUST REEL: adjust reel to bed knife without disturbing height of cut.
 CABLE DRIVEN REEL: provides constant reel speed independent of ground speed. Eliminates hydraulic oil leaks.
 MOST PRECISE CUT AVAILABLE: a full 67" even in turns.

Converts in minutes to become a
 VERTI-CUT®, VIBRA-SPIKER®, TEE MOWER.



...AMERICA'S LEADING SPRAYER
 MANUFACTURER

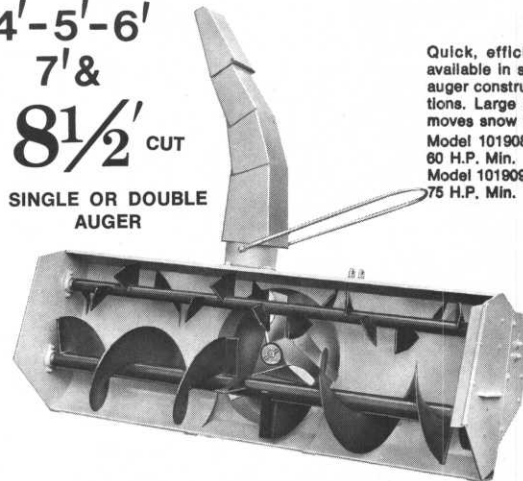
ALL THE OPTIONS TO PROVIDE SPRAYING
 TO MEET YOUR NEEDS EXACTLY!

- TRAILER UNITS
- SKID UNITS
- 3 POINT SPRAYERS
- BOOMS AND HANDGUNS

HANSON SNOW BLOWERS

4'-5'-6'
 7' &
 8 1/2' CUT

SINGLE OR DOUBLE
 AUGER



Quick, efficient 8 1/2' unit is available in single and double auger construction plus all options. Large 29" fan diameter moves snow from augers fast.
 Model 101908 Single Auger, 60 H.P. Min.
 Model 101909 Double Auger, 75 H.P. Min.

ROBERTSON

TURF CARE PRODUCTS

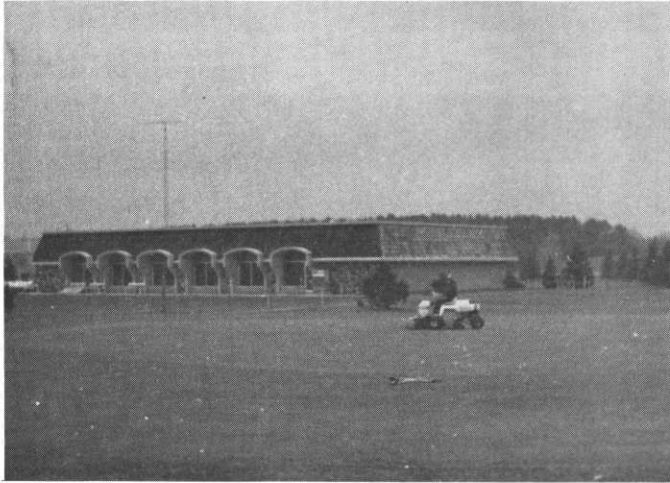
4600 Akron Avenue
 Inver Grove Hts., MN 55075
 TELEPHONE 612-455-8500

- ALSO OFFERS: COMPLETE PARTS DEPT.
- BRIGGS & STRATTON PARTS & SERVICE CENTER
 - KOHLER PARTS & SERVICE CENTER
 - ONE DAY U.P.S. SERVICE
 - FIELD SERVICE VAN
 - PROMPT, COURTEOUS, PEOPLE

CALL JOE OR ORV FOR MORE INFORMATION AND FREE CATALOG.

CHILLY OCTOBER MEETING

Indian Hills Golf Club was indeed very, very green and in excellent shape to greet the superintendents on October 8. The superintendents, however, were blue with cold or rosy cheeked in equal numbers. But it didn't stop the "die-hards" from playing the 18-Holes. Besides, the hot brandy afterward made the warming up that much more fun! R. L. Gould had a nice equipment display at the meeting which drew quite a few onlookers. In the absence of President George Ostler, Vice-President Dick DeSplinter chaired the meeting. Two new members were accepted at the meeting: John Gross-B1 of the Woodbury Racquet & Golf Club and Keith Stockowski-C of Keller Golf Club. After the meeting fifty-five hungry people devoured the great steak dinner.



Modern clubhouse at Indian Hills with putting green in foreground.



Challenging. Pond at right front of famous 10th Green waits for more golf balls.

Call US
for the best
in Turf Equipment,
The KROMER CO
612/472-4167



- | | |
|-------------|---|
| *MYERS | Sprayers |
| *SMITHCO | Red Rider, Trucksters, Sprayers, Trap Rakes |
| *HOWARD | 48" to 82" Rotary Mowers |
| *HECKENDORN | 36" to 88" Rotary Mowers |
| *TURF-VAC | Leaf & Debris Vacuums |
| *ROSEMAN | Gang Mowers |
| *DIADEM | Fertilizer Spreaders |
| *HEFTY | Diesel & Gas Tractors |
| *DAVIS 500 | Golf Cars |
| *KWH | Blowers & Mist Blowers |
| *TEX. REF. | Tire Seal |
| *WD-40 | Preservative |

KROMER CO

3455 County Road 44, Mound, Mn. 55364
TELEPHONE 612-472-4167



Novel. Sign in front of clubhouse is in perfect harmony with club's motif.

For your **PEAT** And
TOP DRESSING
Needs

Contact:

COLBY PIONEER PEAT CO.

Box 8 Hanlontown, Iowa 50444

Phone: 515-896-2155

DECISIONS BY COMMITTEE

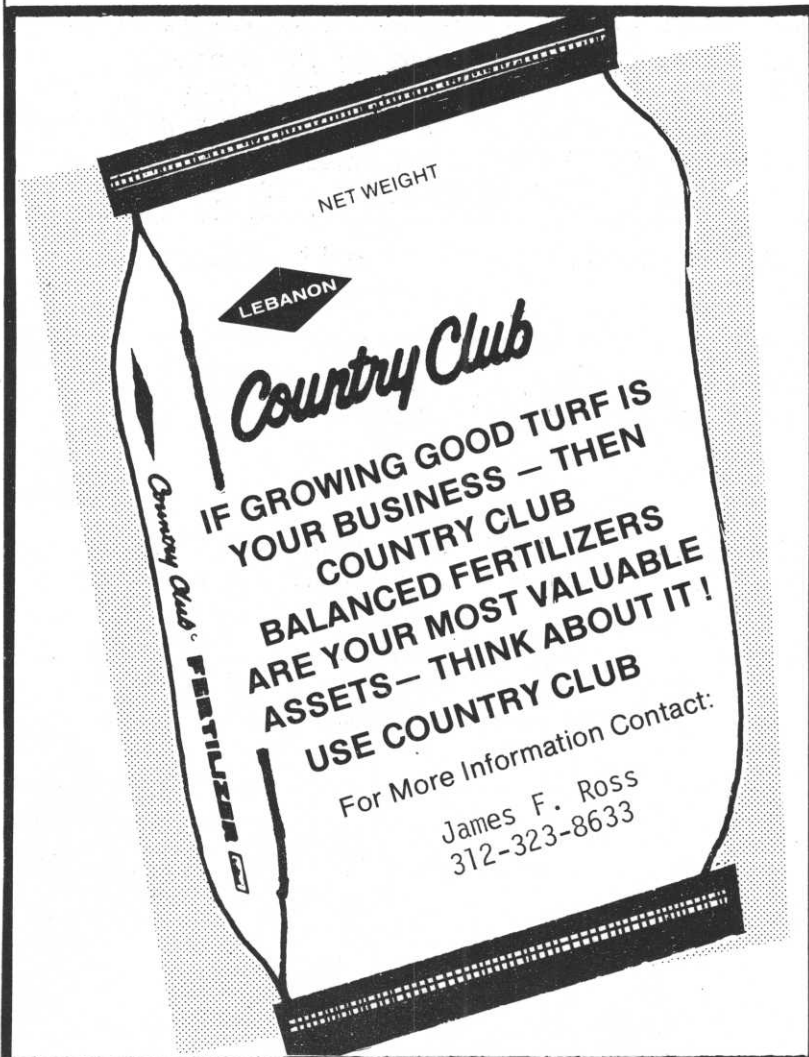
Committee decisions have been the butt of jokes since men have had committees, but they can be effective if the right groundwork has been laid.

Committees allow members with differing backgrounds and opinions to weigh alternatives and decide on the best solution. But without careful management, decision making groups can turn into battlegrounds.

Members should be guided to accept and offer opposing points of view, communicate clearly, feel free to disagree without malice, listen and use feedback to check comprehension of opposing thoughts, criticize ideas instead of people, accept criticism of their ideas, be able to risk offering new thoughts and reason logically and constructively.

Above all, make sure disagreements and bad feelings stay in the conference room. Don't take them back to the office.

Reprint FORE FRONT



NOMINATING COMMITTEE REPORT

The Nominating Committee is proud to present the following slate for this year's election:

President:	Dick DeSplinter
Vice-President:	Dennis Hendrickson George Jennrich
Treasurer:	Jim Lindblad John Nylund
Directors: (Two to be elected)	Kerry Glader Don Lindblad Jerry McCann Orland Maenke Randy Nelson Steve Young

Keith Scott
Chairman Nominating Committee