



**Deere?
MF?
IH?
Case?
Nope. Toro.®**



Yup, we dare compare the Toro Groundsmaster 52® mower to some of the finest farm tractors. With good reason.

It's built rugged and hefty like a fine tractor. Has hydrostatic drive like a fine tractor. Has hydraulic power like a fine tractor (to raise and lower the out front cutting deck). Even has PTO like a fine tractor to link power with attachments.

It mows big yards fast with 3 rotary blades and a 52" cut. Rear-wheel steering and offset designed deck let you trim right up close to trees and shrubs like no "lawn tractor" can.

The Groundsmaster 52 also mulches leaves and blows away or plows snow with appropriate optional accessories. In addition, you can order a bagging system to collect clippings and mulchings. Cab also available.

The Toro Groundsmaster 52 riding mower. Built to stand up under the heaviest use. Just like a fine farm tractor.



**Haven't you
done without a Toro
long enough?**



MINNESOTA TORO, INC.

14900 21st AVE. N.
PLYMOUTH, MN 55441
(612) 475-2200
Dan Evavold
G.N. Rasmussen

RESEARCH REPORT

The Summer Turf Program

BY WARD C. STIENSTRA, U OF M DEPT. OF TURF & PLANT PATHOLOGY

The summer Turf Program began in May with the purchase of fertilizers and equipment. The first plot work occurred at Rochester, Minnesota on June 14. The golf green nursery at the Rochester Golf and Country Club, Kurt Erdmann superintendent, was treated earlier in the spring with one application of 22-0-6, aerated with 5/8" tines - plugs removed and approximately 3 yards of sand was applied and worked into the 8,000 sq. ft. green. At campus, a similar plot was established, except no sand program. The campus plot received 1/2 pound nitrogen as urea on June 8. At Northland Country Club in Duluth, Eino Maki superintendent, the green nursery plot area was fertilized in the fall of 1977 with 1/2 pound of soluble nitrogen and 1 pound of IBDU. No fertilizer was applied in the spring of 1978.

The test plot areas were fertilized with a Scotts 3 foot wide drop spreader. The plot size varied with the area available (i.e. 6' x 60' at Rochester and at St. Paul and 9' x 72' at Duluth). The fertilizer types, treatment and color rank are presented in Table 1.

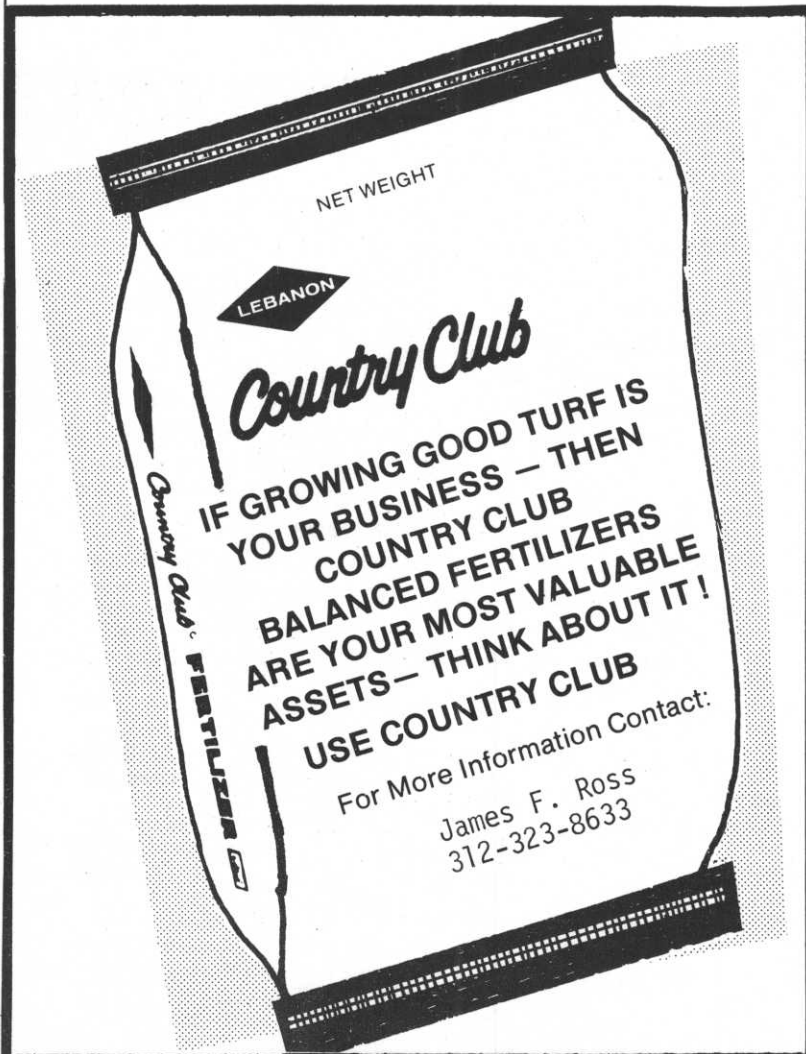
The average rank order of all treatments at all locations is given as the season rank. The Howe product was applied at one location and its rank was determined on the basis of two ratings. The rank order readings were made approximately 1 month after the product was applied, which would tend to favor slow release - long acting products and produce lower rankings for those products with quick release forms of nutrients.

Disease, dollar spot, did reduce quality at the St. Paul campus location and the higher rank of Par Ex products on 8/16 was later recognized to be the result to disease control by fungicides. The above program could be repeated in 1979 with plot plans made available to the entire organization by publication in the HOLE NOTES.

A similar trial was conducted at the Oak Ridge Country Club, Keith Scott superintendent, on Fairway turf. The products were applied with a drop spreader to 9 x 66 foot plots except for the Scotts Fairway fertilizer product, 30-3-10, which was applied to an 18 x 66 foot plot. This prevented any fertilizer over-lap. Fertilizer treatment rates and color ratings are presented in Table 2.

Heavy rains after the first treatment may have diluted the soluble fertilizer response and an application error with the rotary spreader resulted in some burn after the second application. Late season color with the Scotts Fairways Fertilizers 30-3-10 was the most dramatic response observed in 1978. This plot area will be observed again in 1979

Continued on Page 3



Continued from Page 2

The third area of activity last summer was the fungicide - fertilizer - dollar spot interaction study at the St. Paul Campus. The fertilizers were applied as in Table 1. Dollar spot readings began on August 1 and continued through September 14. The data in Table 3 suggests the following: 1) nitrogen of any kind slowed disease development but did not control it and 2) water soluble nitrogen forms had slightly more dollar spot before slow release nitrogen forms. Clearly when dollar spot conditions occur, fungicides are required to manage Penncross Bentgrass.

The application of dollar spot fungicides listed in Table 4 occurred on fertilizer treatments Par Ex 31-0-0 and Par Ex 20-0-16 and in one case on Scotts greens fertilizer 22-0-16. The disease was well established when spraying began on July 25. The standard systemic product benomyl or Tersan 1991 provided excellent control. The RP 26019 rates were too low or the application interval was too long. The 2 oz. application rate of RP 26019 may be adequate when disease pressure is less. The new Daconil formulation 4 F provided better control of dollar spot than did the 6 F formulation. The experimental products are also very promising. The Ciba Geigy product at 2g/1000 sq. ft. is fifteen times less material than a 1 oz. rate. The BFN product from the Boots company in England also performed well at several rates and formulation types.

The summer plots were very exciting and did yield some valuable data. In addition to the plot work repeated here, fall fertilizer applications were made at Pierz, Forest Lake and Hazeltine Golf Courses. We are testing date of fertilizer application and type relative to snow mold development. No data is available but come the spring snow melt, we may have confirming evidence to support fall fertilizer applications and better handle on when to apply fertilizer products and what types.

Call US
for the best
in Turf Equipment,
The KROMER CO
612/472-4167



- | | |
|-------------|--|
| *HAHN | Greensmowers, Aeriators |
| *MYERS | Sprayers |
| *SMITHCO | Red Rider, Trucksters, Sprayers,
Trap Rakes |
| *HOWARD | 48" to 82" Rotary Mowers |
| *HECKENDORN | 36" to 88" Rotary Mowers |
| *TURF-VAC | Leaf & Debris Vacuums |
| *ROSEMAN | Gang Mowers |
| *DIADEM | Fertilizer Spreaders |
| *HEFTY | Diesel & Gas Tractors |
| *HOLDER | Diesel Tractors |
| *KWH | Blowers & Mist Blowers |
| *TEX. REF. | Tire Seal |
| *WD-40 | Preservative |

KROMER CO

3455 County Road 44, Mound, Mn. 55364
TELEPHONE 612-472-4167

NEW MEMBER DRIVE

Share a good thing with that superintendent friend who always was going to join but never quite got around to it. Use the application blank found in the rear of this issue of HOLE NOTES to put (as salesmen say) the fast close on him and get his signature on that application. Actually, you will be doing him a favor by opening up the opportunity to meet and exchange ideas and information on a monthly basis with other people in the same field. Think back! That is probably how you joined the association and aren't you glad you did! Don't let this opportunity to help a fellow superintendent go to waste.

While speaking of memberships, perhaps this is the right time for M.G.C.S.A. members who do not belong to the Golf Course Superintendents' Association of America to take a look at their progress and advantages of membership. Just call our office for a membership folder. Most clubs are willing to pay for their superintendent's membership.

Don't blame your Northrup King man if he wants to play your fairways, after you revitalize them with Overseeder II.

Overseeder II quickly develops into the kind of turf that makes tees and fairways irresistible to any golfer.

It's easy to understand what you get out of Overseeder II when you know what goes into it: a blend of Parade and Adelphi Kentucky Bluegrasses and Eton and Pennfine fine-leafed perennial ryegrasses. Combining all the advantages of these varieties, Overseeder II transforms sparse, patchy areas into dense turf that holds up under even the heaviest weekend traffic.

Your Northrup King man will know if Overseeder II is the right prescription for your course and your area. If it isn't, he can recommend the appropriate overseeding formula, custom-blended by Northrup King to solve your particular problem.

Contact your Northrup King representative or distributor. He'll gladly come out for a consultation. And once he gets finished with your course, don't be surprised if he turns up again—with his golf shoes and clubs.



NORTHROP KING CO.
BOX 959 • MINNEAPOLIS, MINNESOTA 55440

Here's big capacity mowing with velvet-smooth results... **JACOBSEN F20 9-gang Mowing Tractor!**



The Jacobsen F20 Mowing Tractor has it all! Maximum performance with a full 19 foot swath! All the benefits of out-front mowing with a 25% increase in mowing capacity over 7-gang tractors. The F20 has a wide stance to handle safely on hills and slopes. With 9 articulated mowing units that follow the ground contour, the F20 can cut up to 76 acres per 8 hour day at realistic mowing speeds. All tractor wheels are behind mowing units to prevent wheel tracks and streaks of uncut grass. Individual hydraulic controls allow the operator to adjust the width of mowing swath from 1 to 9 gangs, for mowing large areas as well as between obstacles. And with out-front mowing units, the operator is always looking in the direction he's mowing. If you're looking for quality of cut *and* big capacity, look at the Jacobsen F20 Mowing Tractor.

**LET US FILL YOU
IN ON ALL THE
OTHER DETAILS**



3711 Lexington Avenue North
St. Paul, Minnesota 55112

FOR DEMONSTRATION CALL
612-484-8411

1978

Table 1.

PRODUCT	Green Fertilizer Readings																							
	Rochester								St. Paul								Duluth							
	6/14	7/17		8/15		9/17		11/3		6/14	7/17	7/24	8/16		9/14		10/24		6/19	7/18	8/14		9/16	
T	T	R	T	R	T	R	T	T	T	R	R ¹	T	R ²	T	R	T	T	T	T	R	T	R	T	T
Par Ex 31-0-0 (3.5) ³⁾	2	0	3.5	0	3.7	2	4	0	2	0	3.3	3	0	3	2	4	0	2	0	3.4	0	3.8	2	0
Par Ex 20-0-16 (3.2)	2	0	3.8	0	4	2	3.8	0	2	0	3	3.3	0	3	2	4	0	1	1	4	0	4.1	2	0
Milorganite 6-2-0 (3.4)	1	.5	3.8	.5	3.6	1	3.5	1	1	1	3.2	2.6	.5	3	1	3.5	1	1	.5	3.5	.5	3.8	1	1
NH ₃ NO ₃ 34-0-0 (3.1)	1	.5	3.4	.5	3.1	1	3.5	1	1	1	3.3	2.5	.5	3	1	3.5	1	1	.5	2.9	.5	3	1	1
NH ₃ SO ₄ 21-0-0 (3.0)	1	.5	3.3	.5	3.2	1	3	1	1	1	2.8	2.5	.5	3	1	3.5	1	1	.5	2.9	.5	3	1	1
Howes 20-5-10 (2.9)	-	-	-	-	-	-	-	-	-	-	-	-	-	-	-	-	-	1	1	2.8	.5	3	1	0
Scotts Greens 22-0-16 (3.2)	.9	.45	3.3	.45	3.4	.9	3	.9	.9	.45	3.2	2.9	.45	2.9	.9	3.8	.9	.9	.45	3.1	.45	3.8	.9	.9
Check (2.5)			3		3		2.5				3	2.6		3		3.5				2.5		2.8		

T = Pound of Nitrogen /1000 sq. ft.

R = Color Rank 5-1, 5 best

1) = Interaction with dollar spot, Scalping, & Fungicide application

2) = Severe \$ made ranking difficult

3) = Season Rank in ()

Table 2.

1978
Fairway Fertilizer Readings

Product	6/21 T	8/16 R	8/16 T	9/25 R	9/25 T	11/6 R	11/6 T
Par Ex 31-0-0	2	3.25	2	3.5	0	3.13	2
Milorganite 6-2-0	1	3.5	1	3.5	1	3.25	1
NH ₃ NO ₃ 34-0-0	1	3.25	1	3.25	1	3.	1
NH ₃ SO ₄ 21-0-0	1	3.25	1	3.13	1	3.	1
Scotts Fairway 30-3- 10	.9	3.25	.9	3.4	.9	4.38	.9
Howes 20-5-10	1	3.25	1	3.25	1	3.25	1
Check		3.25		3.25		3.5	

T Rate of Nitrogen lbs/1000 sq. ft.

R Color Rank 5-1, 5 best

1978
Dollar Spot Readings

Table 3.

Product	8/1	Date 8/7	8/16	8/21	8/28	9/5	9/14
Par Ex 20-0-16	80 ^a	73	93	144	358	375	230
Par Ex 31-0-0	67	67	102	154	367	375	247
M.O. 6-2-0	104	67	107	159	390		
NH ₃ NO ₃ 34-0-0	89	79	117	170	434		
NH ₃ SO ₄ 21-0-0	100	82	114	175	439		
Scotts 22-0-16	85	77	97	168	408	408	298
Check	103	69	137	205	440	408	224

^aData are # of spots/sq. meter

Table 4.

1978
Dollar Spot Readings

Product	Date						
	8/1	8/7	8/16	8/21	8/28	9/5	9/14
1 Tersan 1991	5.25 ^a	0.50	0.38	2.75	0.50	0.00	2.00
2 RP26019 1 oz.	6.75	2.75	24.63	84.25	45.00	3.00	11.25
3 RP26019 2 oz.	6.25	1.13	5.38	24.13	12.13	2.75	3.13
4 Daconil 27876F	9.14	0.50	16.50	41.00	18.00	5.00	2.13
5 Daconil 27874F	10.50	2.25	1.13	16.75	8.63	1.25	0.75
6 Ciba Geigy 4g/1000	11.25	0.88	0.50	0.13	0.13	0.00	0.00
7 Ciba Geigy 8g/1000	16.50	3.63	1.63	0.00	0.75	0.25	0.00
8 Ciba Geigy 2g/1000	10.00	3.00	0.75	11.00	1.50	3.25	0.25
9 BFN8090 2.5 oz	34.75	24.63	17.25	71.13	73.13	5.25	2.00
10 BFN8090 5 oz	24.13	24.38	13.13	56.00	25.13	2.25	1.25
11 BFN8090 10 oz	11.29	2.75	0.50	14.13	1.13	0.00	0.00
12 BFN8077	15.00	7.38	3.25	27.75	21.13	0.50	0.25
13 BFN7789	17.25	4.63	3.00	26.38	16.50	0.50	1.00
14 check	93.76	84.56	112.81	164.30	400.33	375.00	243.89

a) Data are # of spots/sq. meter

TAKE CARE OF YOUR TREES

If you discover damage on a tree's trunk, the first step is to clean the dead wood away with a sharp knife. Treat the exposed wood with a durable insecticide/fungicide, and fill the spot with cement if it is large. Cover the whole area with a commercial tree-coat paint or a flowable plastic roofing tar cement.

If a tree is so badly damaged by a storm or disease that its survival is unlikely, removal is the wisest solution. A slowly dying tree not only is unsightly, but may harbor disease and insects that will threaten other healthy trees.

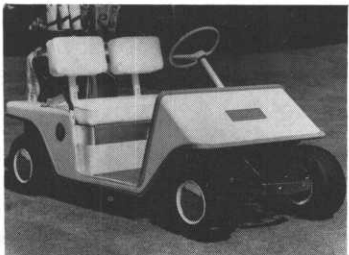
Occasionally, partly split trunks and limbs can be salvaged by drilling holes through them and fastening them back together with through bolts or cable and turnbuckles. This can be a difficult procedure, however, and calls for the services of a trained arborist.

E-Z-GO



**E-Z-GO GOLF CAR
THREE WHEEL MODEL
GAS OR ELECTRIC**

**THE E-Z-GO
MAINTENANCE
MACHINE
GT-7 TRUCK**



**E-Z-GO GOLF CAR
FOUR WHEEL MODEL
GAS OR ELECTRIC**

LOWEST POSSIBLE PRICES ON ALL NEW AND USED GOLF CARS AND GT-7 TRUCKS.

LARGEST SELECTION OF USED GAS AND ELECTRIC THREE AND FOUR WHEEL GOLF CARS.

FOR MORE INFORMATION CALL OR WRITE

Stegner Golf Cars

DISTRIBUTORS OF E-Z-GO

5900 University Ave. NE Rainbow Bldg. Main St.
Minneapolis, Minn. 55432 Ortonville, MN 56278
Phone 612/571-4230 Phone 612/839-2511

SALES-SERVICE-LEASING-PARTS

When working on diseased trees, be sure that all tools are properly treated before they are used on healthy trees. They should be washed in alcohol between jobs and before storage. Also, be sure that infected limbs are removed as soon as possible from the area and burned or deposited in a landfill to avoid the danger of infecting other trees.

TORO ANNOUNCES NEW ALL-HYDRAULIC REEL MOWER

MINNEAPOLIS -- The Toro Company has introduced a golf course fairway mower that the company predicts will set a new standard of precision and ease of operation for turf maintenance equipment.

The new machine, called the HTM-175, is the product of a three-year development program, according to Dennis Brown, Toro's marketing manager for golf course maintenance equipment.

The HTM-175, a diesel-powered, seven-gang all-hydraulic reel mower, was designed, Brown said, "from the ground up" but combines many proven features from the Toro Parkmaster gang mower and the Toro Turf Pro 84 triplex mower.

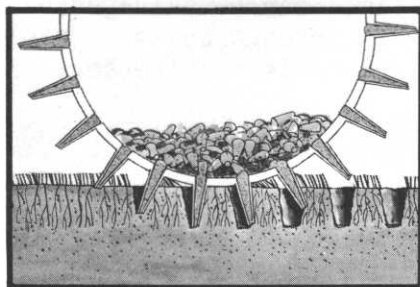
Brown said the new machine was developed specifically for golf courses whose superintendents strive to maintain all turf surfaces in superb condition... "in other words, all the best courses."

Toro will highlight the HTM-175 at the annual show and conference of the Golf Course Superintendents Association of America in Atlanta the week of Feb. 4.

NEW CUSHMAN GREENSAVER AERATOR

The accurate aerator that gets aeration done 10 times faster than most other methods

In the raised position you're able to travel quickly between greens...and that saves time. When you reach the green just move the hydraulic lever at your side until the Greensaver is lowered into the turf. There's no need to stop the vehicle. You can keep moving and aerate at speeds up to 6 mph.



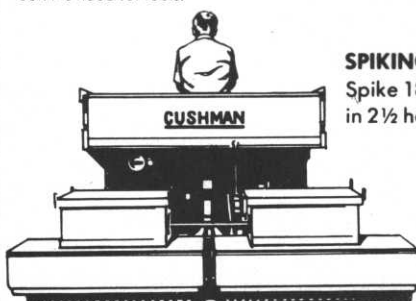
Cores are pushed into the rotating drum as the Greensaver penetrates the ground.

Cushman® Turf Care System cuts equipment costs 35%, labor costs 50%.

Purchase one of the basic Cushman Turf-Truckster vehicles available in 3 or 4 wheel models with 12 or 18 hp. Then add as many of the new modular accessories as you need for the work you have to be done. No need to buy another expensive vehicle. In minutes you can attach the module you need by using simple pins that slide in and out. No need for tools.



TOP DRESSING
Mounts on Truckster chassis.
No need for separate engine.



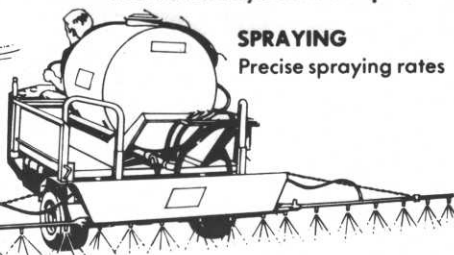
SPIKING
Spike 18 greens
in 2½ hours.



DUMPING/HAULING
1000 lb. payloads.
Manual and hydraulic dumping.



SPREADING
Spread up to 40' swath.



SPRAYING
Precise spraying rates

CALL:
GERRY COMMERS
JOHN SNIKER
OR BILL LANCETTE

CUSHMAN MOTOR CO., INC.

2909 E. FRANKLIN, MINNEAPOLIS, MN 55406 612-333-3487

RESEARCH

I'm sure by the time you read this clip most everyone will be tired of ice fishing, vacationing, snow-mobiling, skiing or whatever you have been keeping busy with this winter.

During the winter months we have ample time to reflect on our programs of the past season. Each year I try to improve my programs directed toward turf care. We are in the business of turf management with many tools available to reach our goals. However, we also know we cannot control Mother Nature and nature may have more control of the results than we.

We should make the best possible use of the controls we have available and deal effectively with problems nature causes. Research is not 100% effective in answering our problems. However, it is a great deal more effective than anything I have tried.

With this in mind I trust that you will give our Research Programs the support required to continue and improve. Our annual research suggested billing letter will be coming to you shortly. We hope you will give this your utmost consideration and notify the proper authority at your club.

The committee requests your support and input. If you have suggestions, please contact me or any of the committee members. Our first committee meeting will be the later part of February. Committee members are: Chairman, Dick DeSplinter, Dean Sime, Mark Smith, Nick Dunn, Dale Caldwell and Dick Grundstrom.

We will make information available monthly in the HOLE NOTES.

Dick DeSplinter

Minnesota Golf Course Superintendents' Association

AFFILIATED WITH THE NATIONAL GOLF COURSE SUPERINTENDENTS' ASSOCIATION



Membership Application

PLEASE PRINT OR TYPE

I hereby apply for membership in the MGCSA

NAME _____ (AGE _____ SINGLE _____ MARRIED _____)
HOME ADDRESS _____ WIFE'S NAME _____
CITY _____ STATE _____ ZIP _____
CLUB _____ PHONE (AREA CODE) _____
CLUB ADDRESS _____ CITY _____ STATE _____ ZIP _____

SEND MAIL TO HOME ADDRESS () CLUB ADDRESS (). PLEASE CHECK ONE.

SEND 1 _____ 2 _____ 3 _____ COPIES HOLE NOTES.

ARE YOU WILLING TO JOIN THE NATIONAL ASSOCIATION IF ACCEPTED? YES _____ NO _____

MY PRESENT POSITION IS _____

LENGTH OF SERVICE IN PRESENT POSITION _____

I AM APPLYING FOR CLASS: PLEASE CHECK ONE.

\$25.00 _____	CLASS A.	Superintendent for three years or more.
\$25.00 _____	CLASS B.	Superintendent more than one year but less than three years.
\$25.00 _____	CLASS B II.	Superintendent for less than one year or an Assistant Supt.
\$15.00 _____	CLASS C.	Student
\$15.00 _____	CLASS D.	Technician
\$35.00 _____	CLASS F.	Associate Member or Owner

PLAQUES FOR MEMBERSHIP CERTIFICATES ARE \$5.00 EXTRA. PLEASE CHECK: YES _____ NO _____

AMOUNT ENCLOSED: \$ _____. ONE YEAR'S DUES MUST ACCOMPANY THIS APPLICATION.
(REFUNDED IF NOT ACCEPTED)

I PROMISE TO OBSERVE AND ABIDE BY THE BYLAWS OF THE ASSOCIATION.

DATE _____ APPLICANT'S SIGNATURE _____

OVER

APPLICATION MUST BE SIGNED BY TWO VOTING MEMBERS OF THE MINNESOTA GOLF COURSE SUPERINTENDENTS' ASSOCIATION TO CERTIFY RELIABILITY OF APPLICANT.

ATTESTED _____ ATTESTED _____

ADDRESS _____ ADDRESS _____

SHORT RESUME OF YOUR (PREVIOUS OR PAST) EMPLOYMENT. _____

YOUR MEMBERSHIP APPLICATION WILL BE PROMPTLY PROCESSED BY THE MEMBERSHIP COMMITTEE.
YOU WILL BE CONTACTED BY A MEMBER.

(OFFICE USE ONLY)

APPROVED BY:

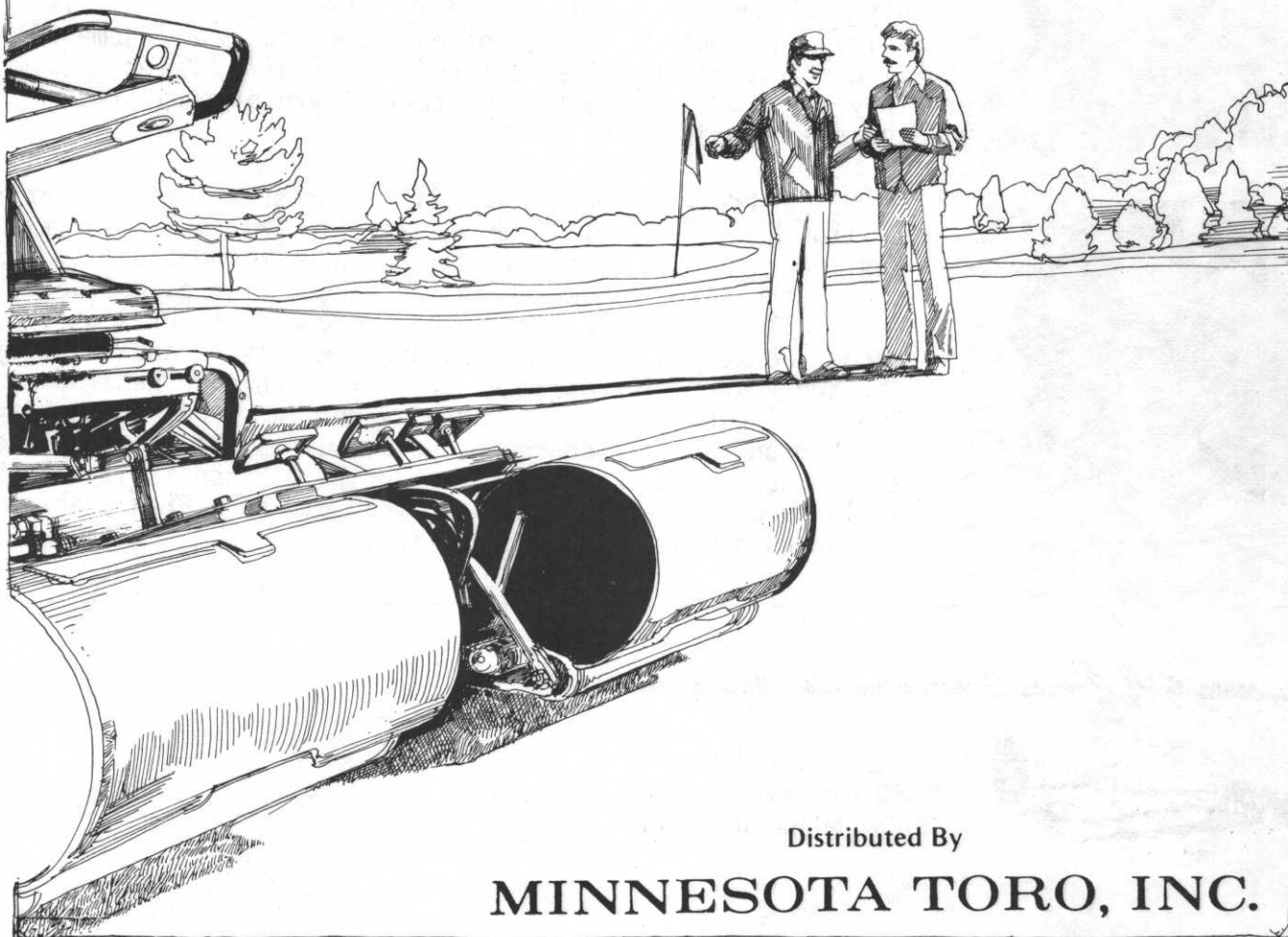
_____	_____	_____
_____	_____	_____
_____	_____	_____
_____	_____	_____

DATE: _____

CHECK: AMOUNT \$ _____ NUMBER _____

BANK: _____

USS Tee-Green 16-4-8... When you want uniform particle size we can deliver!



Distributed By

MINNESOTA TORO, INC.



A product for all reasons.

When you apply USS Tee-Green 16-4-8 to your tees, greens and aprons you're assured that's where it will stay. There's no need to worry about mower pickup because the uniform particle size (90% minus 10 + 20 Mesh U.S. Sieve) means the granules will work their way quickly down through the grass to provide a consistent and even feeding.

Of course this is just one of the advantages of this great

product. Your local USS Vertagreen distributor can tell you much more about the advantages of nitrogen derived from urea-formaldehyde, the chelated iron, sulfate of potash and the guaranteed amounts of secondary and micro-nutrients in this fine product. USS Tee-Green is another reason we say, "see the best, for the best" — and that's your local Vertagreen distributor. He can always deliver.



Agri-Chemicals

Division of United States Steel

P.O. Box 1685, Atlanta, Ga. 30301