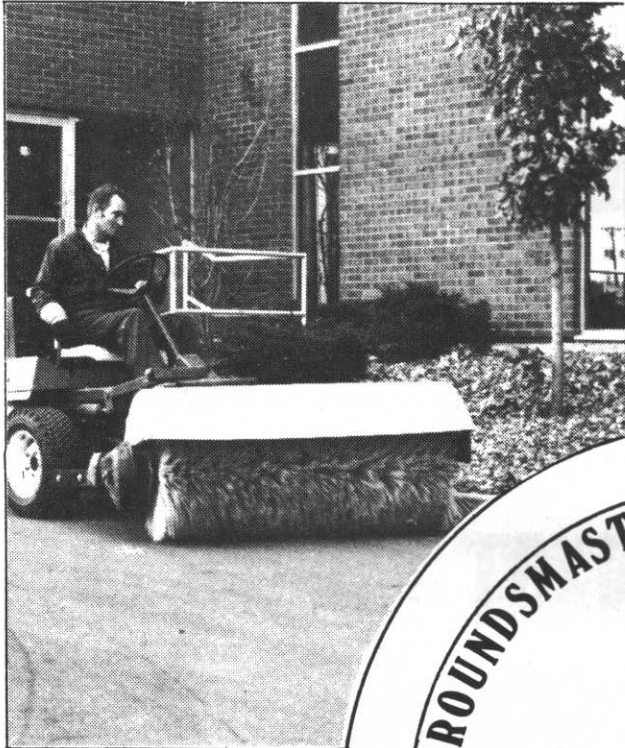
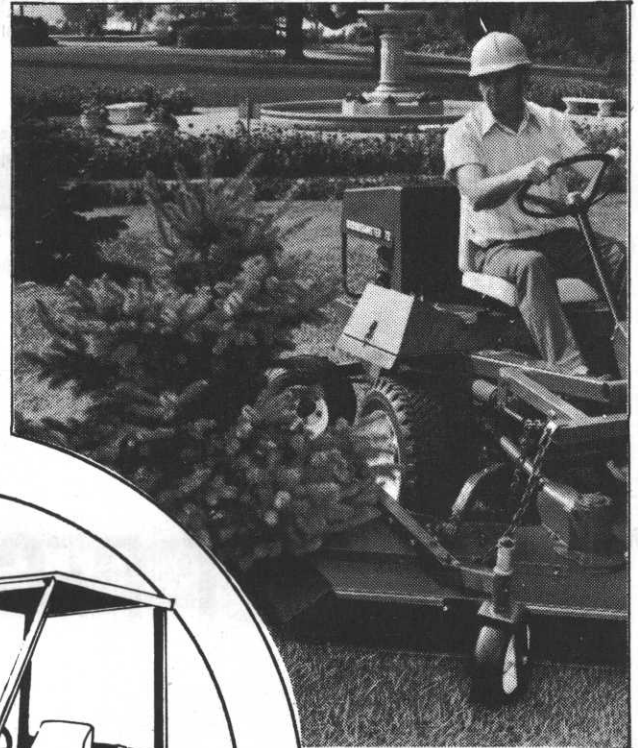


GROUNDMASTER 72

IN ACTION



SPRING

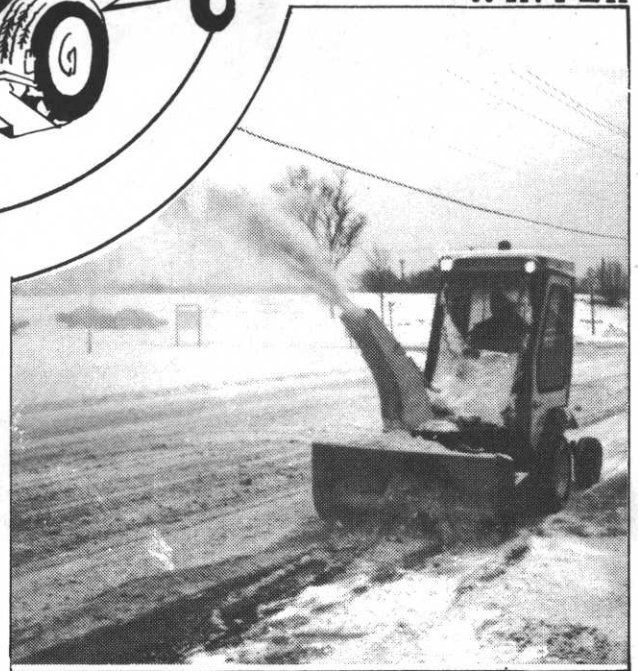


SUMMER

FALL



WINTER



MINNESOTA TORO, INC.

14900 21st Avenue North • Plymouth, Minnesota 55441

Phone Glenn Rasmussen at (612) 475-2200



RAINOUT DIDN'T CANCEL THE FUN!

Disappointed golfers are never at a loss to have fun. Many searched out other area courses that were open and did play. Others quickly found card games while many others used the time to swap ideas and experiences. The social hour and dinner were still a very fine affair. The Golf Tournament was rescheduled for Olympic Hills on Thursday, October 5 at which time Leif Erickson will defend his championship.



BIG WINNER. Big Lyle Olson is congratulated by Co-Chairman Can Evavold on winning stereo grand prize.

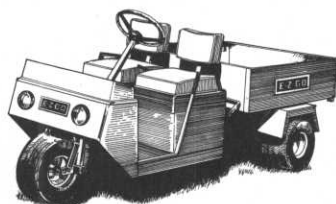
E-Z-GO



**THE E-Z-GO
MAINTENANCE
MACHINE
GT-7 TRUCK**

**E-Z-GO GOLF CAR
THREE WHEEL MODEL**

GAS OR ELECTRIC



**E-Z-GO GOLF CAR
FOUR WHEEL MODEL**

GAS OR ELECTRIC



LOWEST POSSIBLE PRICES ON ALL NEW AND USED GOLF CARS AND GT-7 TRUCKS.

LARGEST SELECTION OF USED GAS AND ELECTRIC THREE AND FOUR WHEEL GOLF CARS.

FOR MORE INFORMATION CALL OR WRITE

Stegner Golf Cars

DISTRIBUTORS OF E-Z-GO

5900 University Ave. NE Rainbow Bldg. Main St.
Minneapolis, Minn. 55432 Ortonville, MN 56278
Phone 612/571-4230 Phone 612/839-2511

SALES-SERVICE-LEASING-PARTS



BIG APPETITES. Beautiful and bountiful hors d'oeuvres spread got top line attention.



BIG SHOT. Bill Hauck, pro at Majestic, congratulates Terry McGovern on Hole-In-One on 8th at Golden Valley that day.

SAFETY IS IMPORTANT WHEN HANDLING AND STORING PESTICIDES

Proper handling and storage of pesticides should be an integral part of any golf course superintendent's chemical use program. These substances, with their remarkable abilities to enhance the appearance and playability of a golf course also have the potential for considerable damage to you and your employees' health.

Improper handling of even small amounts of pesticides can cause blurred vision, headaches, nausea and chest constriction. Larger doses can deposit dangerous chemicals in the bloodstream, causing permanent damage to organs, especially the lungs and kidneys. Periodic blood tests should be run on workers who regularly come in contact with pesticides.

Establishing some clear and easily followed rules will protect you and your crew when handling potentially dangerous chemicals.

Read and reread the product label each time the pesticide is used. Manufacturers review and test their products often and may change label instructions. Wear protective clothing when handling pesticides. Long sleeves, rubber gloves, unvented goggles and a respirator are necessary. Never drink anything, eat, smoke, put your hands in your mouth or rub your eyes while handling chemicals. Avoid spraying on windy days and always stay upwind when spraying. Wash thoroughly with soap and water when you've completed a job.

Use good housekeeping practices, washing chemical spills off work areas and mixing equipment promptly. Even the smallest splash of pesticide on your skin should be washed off with soap and water immediately. Having a safety shower in the chemical mixing area for washing off larger spills gives added protection.

The proper storage and mixing facilities are a great aid to having a safe pesticide operation. A separate room or building for these functions is preferable, but under all circumstances you should have a lockable storage area and a mixing bench with running water. Pesticides should be segregated according to type to prevent cross-contamination and should be kept away from other supplies.

Containers for chemical storage should be clearly marked and periodically inspected for leaks or corrosion. Use original containers whenever possible. Under no circumstances should a pesticide be stored or mixed in a container that could be mistaken for a beverage or food container - a drinking water jug, for example.

Allowances should be made for the collection and proper disposal of runoff from the chemical preparation area. You should also develop a plan for containing water contaminated by fighting a fire in the chemical storage area.

Avoid the temptation to stockpile pesticides. Use up supplies on hand before you order more and don't accumulate odds and ends of old chemicals.

A safe operation is no less efficient than a careless one. In fact, careful handling of expensive compounds and strict adherence to use guidelines may reduce waste and save you money in the end.

Reprint FORE FRONT

When was the last time you really compared golf cars?



GOLF CAR COMPARISON CHART

Comparison based on data published by Golf Business and P.G.A. magazines;
actual tests; and random survey of dealers and courses.

THE DAVIS 500 WAS DESIGNED FOR STRENGTH, PERFORMANCE AND SERVICEABILITY. THE FRAME, CONSTRUCTED OF 2" HEAVY GAUGE SQUARE TUBING, IS PROTECTED BY AN IMPACT RESISTANT RUBBER MOLDING. BODY COMPONENTS ARE REMOVABLE FOR QUICK AND EASY FIELD REPLACEMENT.

The distinct performance and maintenance advantages of Davis 500 cars *will* provide you with many thousands of *extra* profit dollars. And we can prove it. Just call or write to find out why Davis 500 is the best thing to happen to golf courses since the invention of the 19th hole.



KROMER CO

MOUND, MINNESOTA

TELEPHONE 612-472-4167

Improve Pesticide Planning With Annual Calendar

If you could project up to a year in advance what types and amounts of pesticides you were likely to need, wouldn't your long range planning be more accurate?

Many turf managers find that the more common pests and diseases are most likely to surface at a particular time of year. By keeping track of these cycles, they can tell well ahead of time what provisions they need to make to counteract potential problems.

An efficient method for forecasting your pesticide needs is to create an ongoing annual calendar, divided into months or weeks, as appropriate. Go through your records of actual pesticide usage for the past several years, noting in your calendar when pests or disease historically have appeared on your course and what action was most effective against them.

In addition to past experience, you should enter data collected from local experts, including universities, consultants and other superintendents. This information will make you aware of developing problems.

Taken together, this information will give you a rather specific time frame in which to be alert for a given pest or disease. Weather may affect your timetable somewhat, but you should be able to maintain a schedule accurate within ten days.

Reprint FORE FRONT

OUR 30th YEAR

WE SELL THE BEST

CUSHMAN[®]
TURF-CARE
EQUIPMENT



3 & 4 wheel turf trucksters

Club Car[®]



"America's Fastest Growing Golf Car Company"



**NATIONAL
MOWER
COMPANY**

SINCE 1919



THE SNOW COMPANY



OMAHA, NEBR. 68112 [®]

TILT DECK and RAMP LOADING TRAILERS

Exide[®] Willard[®]

THE BEST ELECTRIC VEHICLE BATTERIES
IN THE INDUSTRY

GOOD YEAR

GOLF CARS, TRUCKSTERS, INDUSTRIAL TIRES

Jerry Commers

PARTS • SALES • SERVICE

John Sniker

CUSHMAN MOTOR CO., INC.

Bill Lancette

2909 E. FRANKLIN AVENUE • MINNEAPOLIS, MINNESOTA • PHONE: (612) 333-3487

Green Clippings

APPRECIATION. George Ostler, Chairman of the Research Program, wants to thank Dan Stangl at the Pierz Municipal Golf Course for the contribution to the Research Fund and the use of the practice green and the 6th green as test plots for the Research Program.

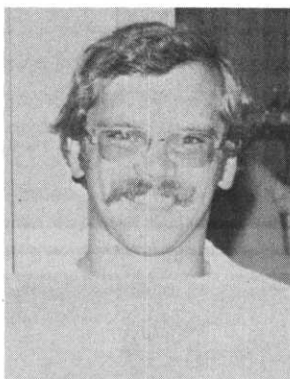
IS ATLANTA IN YOUR FUTURE? February 4-9, 1979 are the dates. The occasion the G.C.S.A.A. National Conference. The theme "Appraising Our Past-Discovering Our Future". The pre-conference seminars will begin Saturday, February 3 with concurrent educational sessions beginning on Monday, February 5 and continuing through Friday, February 8. The conference will conclude on Friday with a tour of Atlanta area golf courses. It appears that the Atlanta Show will surpass San Antonio's in size and number of exhibitors. So far fifteen new companies have contracted to exhibit at the Atlanta Show.

NEW MOWING MACHINE. A highly maneuverable, heavy-duty new riding mower aimed at the grounds maintenance market has been introduced by R. L. Gould & Co., 3711 Lexington Ave. North, St. Paul. Called the "Turfcats" the machine has been engineered for commercial applications. It features rear-wheel steering which permits very tight turns for easy trimming and a hydrostatic transmission allowing the operator to concentrate on mowing rather than gear shifting.

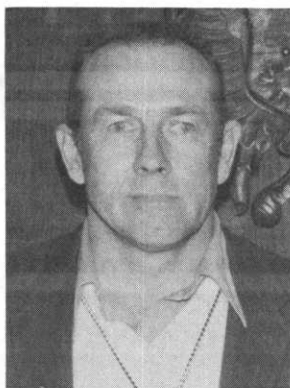
Forward, neutral and reverse are all controlled by a single foot pedal with cutting speeds up to four mph and transport of eight mph. The cutter deck has been designed to pivot up and down and from side to side to hug undulating turf and can be raised hydraulically for a quick move from one job to another.

The Turfcats is a product to the Jacobsen Division of Textron Inc., Racine, Wisconsin.

MEET YOUR SUPERINTENDENTS !



SCOTT AINSWORTH is in his third year as golf course superintendent at the River Falls Golf Club in River Falls, Wisconsin. This is Scott's first superintendent position and he has found the challenge to be extremely enjoyable and an invaluable learning experience. In the short time Scott has been at River Falls, an entirely new irrigation system and pump station have been installed and he believes this type of construction is only learned by going through the experience yourself. A member of M.G.C.S.A. since 1976, Scott acquired his formal turf education at Penn State University and also worked on the crew at Interlachen before moving over to River Falls. A bachelor, Scott's favorite pastime is the unusual hobby of candle making.



JERRY HECKLER is the first and only superintendent the three and one-half year old Cottonwood Golf Club has ever known. Prior to joining the staff at Cottonwood in 1975, Jerry was the golf course superintendent at the Canby Golf Club for six years. Jerry entered the turf industry in a very unusual manner. While a member of the Canby Golf Club, he became dissatisfied with the condition of the greens and set out to correct the problem. The members were overjoyed with the change and decided to make him superintendent. He has been in the field ever since. Although having no formal turf education, Jerry has learned the art of turf care by reading every article he can possibly get his hands on and also he admits a little trial and error. Jerry and his wife, Joan, have two children and a house full of plants.

51st Annual Turf Conference & Business Meeting

November 29, 30 & December 1, 1978



Sheraton Inn-Northwest

SHERATON HOTELS & MOTOR INNS. WORLDWIDE
INTERSTATE 94 & U.S. 52, BROOKLYN PARK, MINN. 55428

Featured Speakers

DR. DAVID FRENCH	DR. HOUSTON COUCH
DR. GEORGE BLAKE	MR. MEL ANDERSON
MR. DONOVAN TAYLOR	DR. JAMES WATSON
DR. DONALD WHITE	DR. MARK ASCERNO
DR. WARD STEINSTR	GCSAA REPRESENTATIVE
AND OTHERS YET TO BE CONFIRMED	

Special Events

WEDNESDAY, NOVEMBER 29	ANNUAL MEETING	5:00 PM
THURSDAY, NOVEMBER 30	STAG PARTY	5:30 PM
FRIDAY, DECEMBER 1	BANQUET	
	COCKTAILS	6:30 PM
	DINNER	8:00 PM
	DANCING	9:00 PM

Registration

NOVEMBER 29	11:00 A.M. - 1:30 P.M.
NOVEMBER 30 & DECEMBER 1	7:45 A.M. - 9:00 A.M.

* SPECIAL SINGLE DAY FEES FOR THOSE WHO	* * LODGING AT THE SHERATON INN NORTHWEST. *
* CAN ATTEND ONLY PART OF THE CONFERENCE.	* * ALL ARRANGEMENTS AND RESERVATIONS FOR *
* WEDNESDAY, \$10.00; THURSDAY AND FRIDAY,	* * ROOMS SHOULD BE HANDLED DIRECTLY WITH *
* \$15.00. INCLUDES ALL COFFEE BREAKS	* * THE SHERATON INN NORTHWEST *
* AND LUNCH ON THURSDAY AND FRIDAY.	* * TELEPHONE 612/566-8855. *

ADVANCED RESERVATIONS - 51ST ANNUAL TURF CONFERENCE AND BUSINESS MEETING
SHERATON INN NORTHWEST, BROOKLYN PARK (MPLS.), MINN.
NOVEMBER 29,30, DECEMBER 1, 1978

NAME	CONFERENCE REG. \$35	DAILY CONF. FEE \$10;\$15;\$15	STAG TICKET \$10.00	EXTRA BANQUET TICKET \$12.00	TOTAL
_____	_____	_____	_____	_____	_____
_____	_____	_____	_____	_____	_____
_____	_____	_____	_____	_____	_____

TOTAL ENCLOSED \$ _____
NOTE: CONFERENCE FEE INCLUDES ONE BANQUET TICKET.

MAKE CHECKS PAYABLE TO M.G.C.S.A.
SENT TO: DENNIS G. HENDRICKSON
289 RIVERWOODS LANE
BURNSVILLE, MINNESOTA 55337

ADVANCED RESERVATIONS FORM MUST BE RECEIVED BY NOVEMBER 24.

CLEAN UP PROBLEMS THIS FALL ?

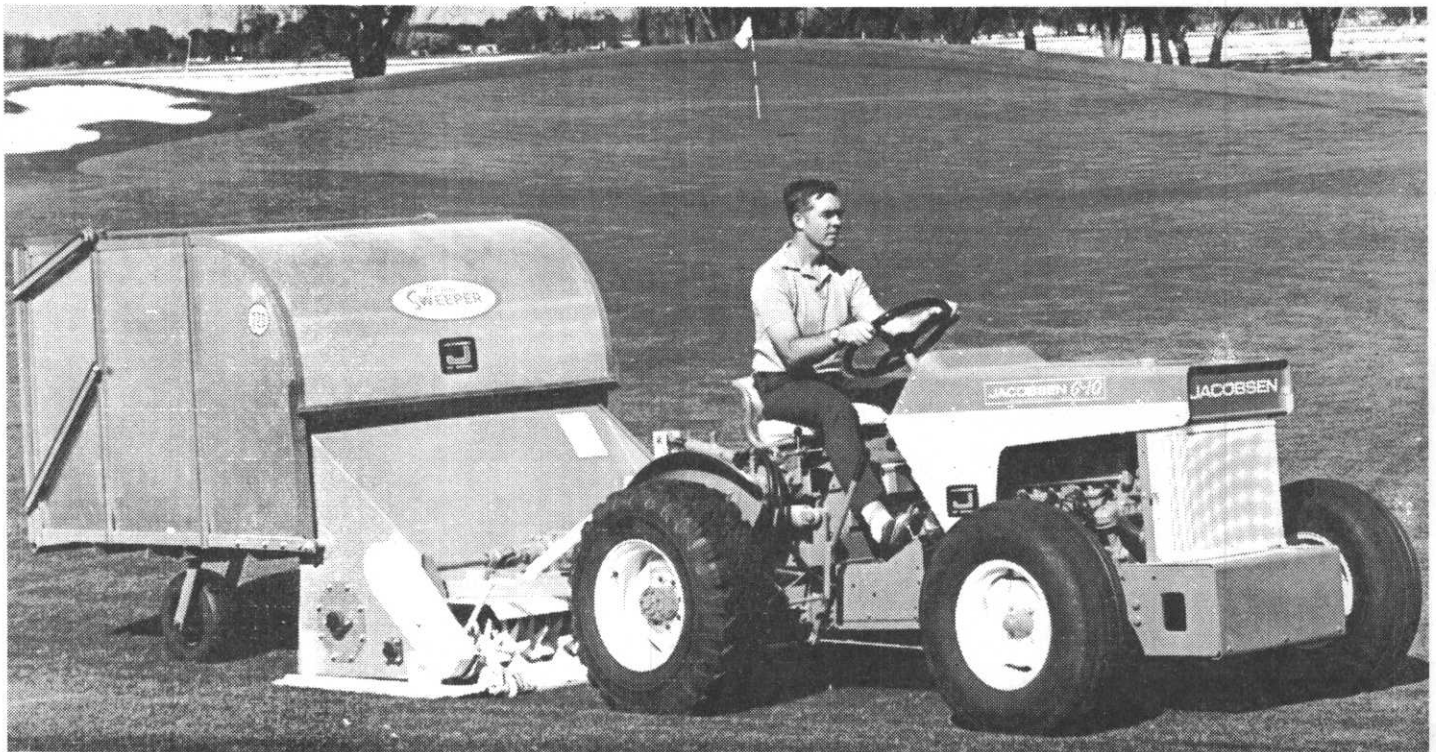
LEAVES • GRASS CLIPPINGS • TWIGS • ROCKS • CANS • BOTTLES • PAPER

JACOBSEN - ROGERS HAS THE ANSWER !

LET



DEMONSTRATE A SWEEPER OR BLOWER THIS FALL



THIS MODEL 720 JACOBSEN-ROGERS SWEEPER HANDLES THE BIG JOBS WITH EASE. SWEEPS WET OR DRY. PATENTED RUBBER FINGERS PROVIDE POSITIVE REMOVAL OF LEAVES, GRASS CLIPPINGS, THATCH, TWIGS, ROCKS, CANS, BOTTLES, PAPER, PINE STRAW AND OTHER DEBRIS.



call (612)484-8411

3711 Lexington Ave. No. St. Paul, Minn. 55112 (612) 484-8411

13th Wisconsin Golf Turf Symposium

PFISTER HOTEL - MILWAUKEE
OCTOBER 25 and 26, 1978

WEDNESDAY, OCTOBER 25

- 8:00 a.m. - Registration and Coffee
- 9:00 a.m. - WATCHING AND LISTENING TO THE WORLD OF GOLF
Waxo Green, Sportswriter, The Nashville Tennessean, Nashville, Tenn.
- 10:00 a.m. - TAKING CARE OF THE GOLFERS
Ole Bill Lyons, Owner, The Lyons Den Golf Course, Canal Fulton, Ohio
- 11:00 a.m. - GOLF COURSE PLAYABILITY CHANGES I HAVE SEEN
Harold Sargent, Golf Professional and Former President, P.G.A.
Atlanta Athletic Club, Duluth, Georgia
- NOON - LUNCH
- 2:00 p.m. - RESEARCH TOWARD FAST GRASS IN THE NORTHEAST
Dr. C. R. Skogley, University of Rhode Island, Kingston, Rhode Island
- 2:45 p.m. - SHORT BREAK
- 3:15 p.m. - THE PROMISE AND PERIL OF THE STIMPMETER
Carl Schwartzkopf, Director, North Central Region U.S.G.A. Green Section,
Crystal Lake, Illinois
- 4:00 p.m. - RESEARCH TOWARD FAST GRASS IN THE MIDWEST
Dr. Alfred J. Turgeon, University of Illinois, Urbana, Illinois

THURSDAY, OCTOBER 26

- 9:00 a.m. - WHAT IS SACRIFICED FOR UNREALISTIC GOALS
Theodore W. Woerhle, CGCS, Oakland Hills Country Club and Former
President, Golf Course Superintendents Association of America, Troy, Mich.
- 9:30 a.m. - HIGH QUALITY TURF UNDER STRESS
Bobby McGee, Atlanta Athletic Club, Duluth, Georgia
- 10:00 a.m. - BREAK
- 10:30 a.m. - FAST GRASS AT A UNIQUE CLUB
Thomas F. Rewinski, National Golf Links of America, Southampton, New York
- 11:00 a.m. - PROVIDING ALL GOLFERS' DESIRES FOR PLAYABILITY
Garold M. Murphy, CGCS, Somerset Country Club, St. Paul, Minnesota

For further information contact: Bob Welch, 8500 South Fifth Avenue, Oak Creek,
Wisconsin 53154. Telephone 414/764-2300.

USS Vertagreen... A product for all reasons.



For professional turf products you just can't beat the Vertagreen lineup. And this complete array didn't just happen. It's the result of many years of experience, testing and proven use—designed and formulated to meet every need and contingency.

USS Vertagreen products contain those extra pluses that separate them from ordinary turf fertilizers—like urea-formaldehyde

for sustained, long-term nitrogen release. There's potassium sulfate to provide needed sulfur for lush growth and a dark healthy color. And iron is available in chelated and fritted form. Add a complete guarantee of secondary and micro-nutrients and you have turf products that are second to none.

And backing this line of Vertagreen products are the best turf

teams in the business—your local Vertagreen distributor and a Vertagreen turf specialist. The two work together to help plan your tailor-made turf program and keep it running smoothly. And that makes it easy for you because when you want the best you just have to see the best—and that's your local Vertagreen distributor.

Distributed By

MINNESOTA TORO, INC.
A product for all reasons.



Agri-Chemicals
Division of United States Steel
P.O. Box 1685, Atlanta, Ga. 30301