

the Hahn Tournament "greensmower."



HAHN

THE TRIPLEX GREENSMOWER WITH IMPORTANT

EXCLUSIVE FEATURES

VELVET CUT due to finer clip frequency .025 to .046"
(competition is approximately .027" and
gets coarser with use)

Can safely be used during Tournament time
(0 (zero) pressure in hydraulic system
when mowing)

Operates in tight turns on the greens without turf
damage (due to double steering tires)

Faster mowing - 5" wider cut than Jacobsen - 9" wider
cut than Toro - 5 M.P.H. cutting speed

Amply powered with only a 12 H.P. engine. Hahn's
efficient tractor and reel drive requires
less horsepower.

Reels steered by operator - NOT free to pivot or slide
sideways on turns. Gives closer clip
frequency.

Reels can be removed in less than 1 minute for service
or changing to other attachments.

KROMER CO.

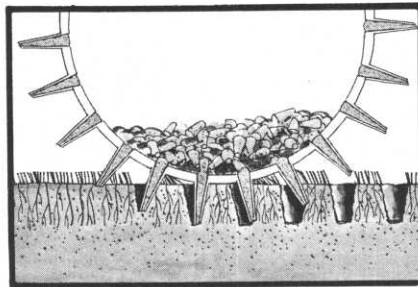
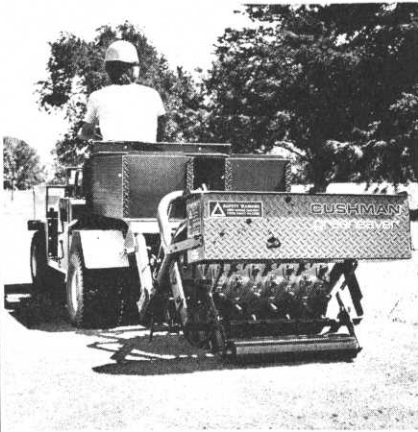
MOUND, MINNESOTA

TELEPHONE 612-472-4167

NEW CUSHMAN GREENSAVER AERATOR

The accurate aerator that gets aeration done 10 times faster than most other methods

In the raised position you're able to travel quickly between greens...and that saves time. When you reach the green just move the hydraulic lever at your side until the Greensaver is lowered into the turf. There's no need to stop the vehicle. You can keep moving and aerate at speeds up to 6 mph.



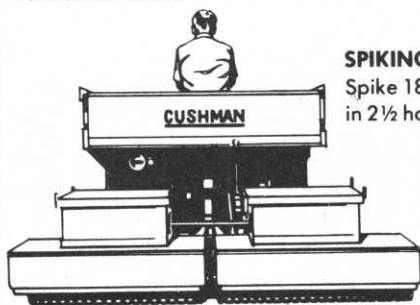
Cores are pushed into the rotating drum as the Greensaver penetrates the ground.

Cushman® Turf Care System cuts equipment costs 35%, labor costs 50%.

Purchase one of the basic Cushman Turf-Truckster vehicles available in 3 or 4 wheel models with 12 or 18 hp. Then add as many of the new modular accessories as you need for the work you have to be done. No need to buy another expensive vehicle. In minutes you can attach the module you need by using simple pins that slide in and out. No need for tools.



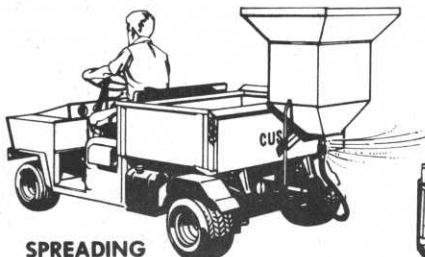
TOP DRESSING
Mounts on Truckster chassis.
No need for separate engine.



SPIKING
Spike 18 greens
in 2½ hours.



DUMPING/HAULING
1000 lb. payloads.
Manual and hydraulic dumpina.



SPREADING
Spread up to 40' swath.



SPRAYING
Precise spraying rates

CALL:
GERRY COMMERS
or JOHN SNIKER

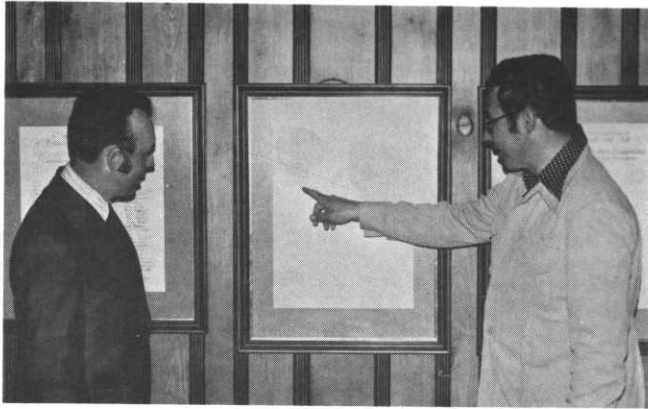
CUSHMAN MOTOR CO., INC.

2909 E. FRANKLIN, MINNEAPOLIS, MN 55406 612-333-3487

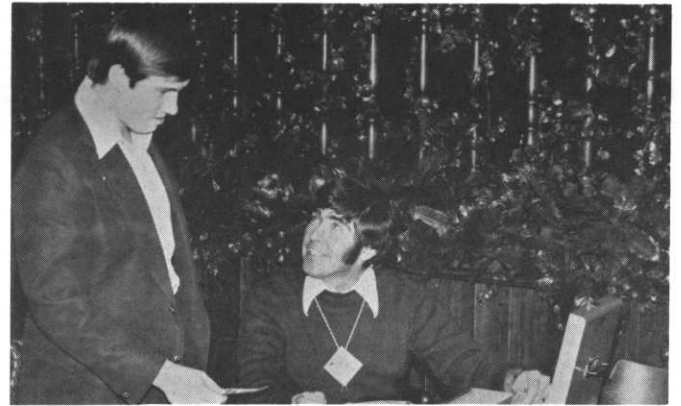
RESEARCH PROGRAM ENLARGED

A smaller than usual but enthusiastic crowd inspected winter research plots and planned a summer research program at Hazeltine Nat'l. G.C. during the April meeting. A nice clear sunny day allowed those interested to accompany Dr. Ward Stienstra out to his test plots at Hazeltine and discuss the tests results which will be published in a forthcoming issue. Later at the business meeting the membership voted to extend the Research Program to include a summer activity which would include dollar spot test trials, course visits, and the recording and evaluation of data for the five month period. More information will be reported after final plans have been formulated. Bill Johnson presented the following reclassifications: Fritz Harens to AA, Doug Dieter to A and Duane Kahmeyer to F2. The following were approved as new members by the Board: Mike Kasner B2, Wapicada Golf Club, St. Cloud; Fred Anderson B2, Olympic Hills G.C., Mpls.; Tom and Tim Westland C, Green Lea Golf Club, Albert Lea. Our thanks to Host Superintendent Nick Dunn for the use of the fine Hazeltine clubhouse even though we were not able to tee it up on that wonderful golf course.

See you next month at Forest Hills Golf Club where we will be able to tee it up for sure! A separate notice of that event has already been sent to you.

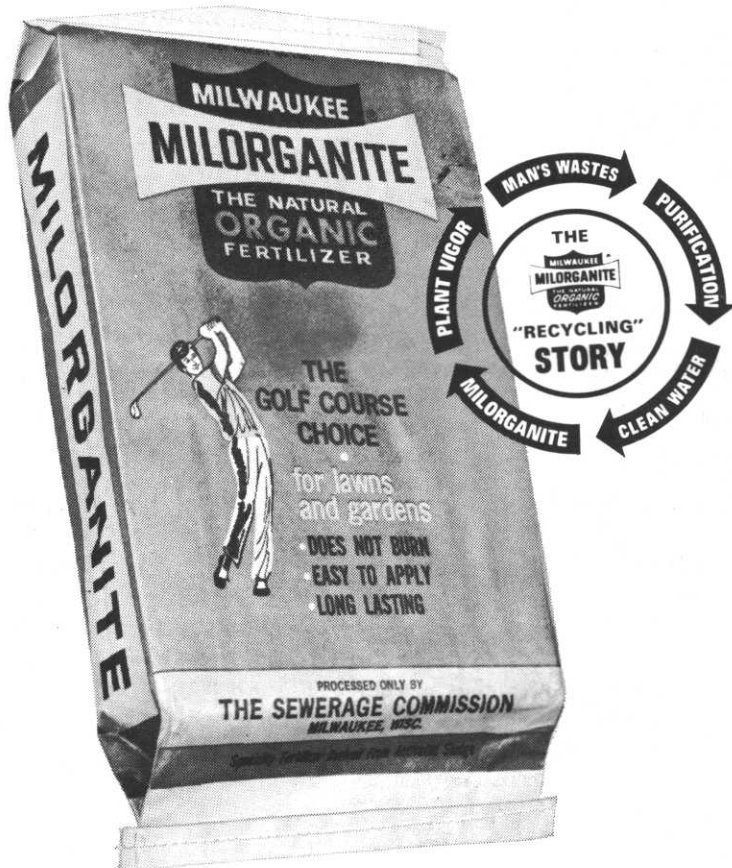


Impressive History. Host Superintendent Nick Dunn shows Joe Moris, left, players' signatures from three National Tournaments held at Hazeltine.



Last Cash Ticket. Carl Johnston, right, sells last cash dinner ticket. New policy of advance sale to go into effect in May.

KICK THE CHEMICAL HABIT
with high analysis moisture conserving natural fertilizer.



M. T. Wiley, Inc.

P.O. BOX 32 • CHASKA, MINNESOTA 55318 • TELEPHONE 612/448-3300



Achievement. Mike Klatter receives his certified Golf Course Superintendent's Certificate from President Keith Scott.



First Distaff Member. Regina Zwart B2 will pursue a career at Brightwood Hills Golf Club.

NEED A SEEDER?

Why not choose the best?

MODEL 524-100

Jacobsen seeders plant your seed in the ground . . . where it belongs. Planting the seed prevents it from being washed or blown away or turning out to be the free lunch for the birds that broadcast-type seeders provide.

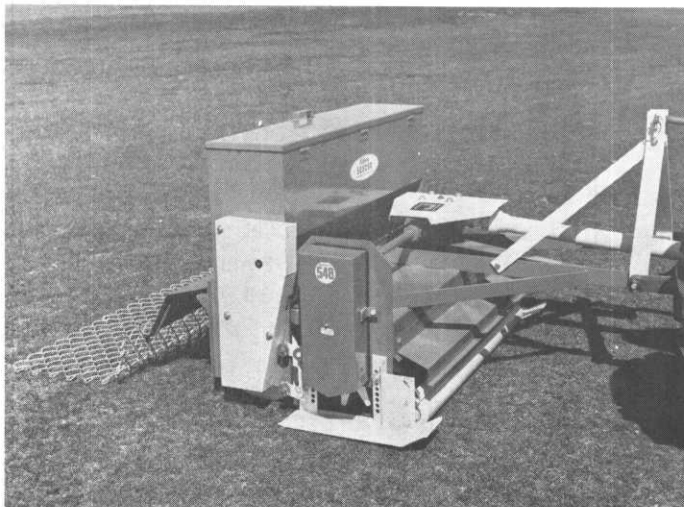
With Jacobsen seeders you get 70% germination on overseeding as well as new seed beds. Broadcast-type seeders give you 10% to 15% germination on over-seeding and 30% to 40% on new seed beds. The cost of seed and labor makes the percent of germination an important consideration in your budget.



MODEL 548-100

And the Model 548-100 is more than a seeder. It removes thatch, aerates and plants the seed all in one operation. With the seeder attachment removed, it's still an Aero-blade that renovates, thatches, vertical mows, spikes and aerates areas that do not require overseeding.

With the Model 524-100 Jacobsen seeder, one man can remove thatch, aerate and plant seed all in one operation. You get the same advantages of planting seed and maximum germination as with the larger Model 548-100.



**Specialists in mowing and turf grass maintenance equipment
for: GOLF COURSES ■ CEMETERIES ■ SCHOOLS ■ PARKS
■ LANDSCAPERS ■ INDUSTRY**



3711 Lexington Avenue North
St. Paul, Minnesota 55112

FOR DEMONSTRATION CALL
612-484-8411

A Review of Protective Measures

By J. R. WATSON, Vice-President, The Toro Company. Continued from April Issue.

Techniques and procedures that protect, avoid and correct the damage that occurs in late winter-early spring are well known to and understood by the golf course superintendent. For the most part, protective measures relate to production of a healthy vigorous grass and to the control, to the extent possible, of the soil-plant environment. When these factors are adversely impacted by anomalous conditions of weather, poor construction or inadequate equipment and supplies, the responsibility for loss of turfgrass must be shared.

I. To Protect Against Temperature Variations

1. Apply sound cultural practices in the fall of the year. This would include properly timed application of balanced fertilizer; cultivation of compacted areas and of such areas as slopes where water infiltration is poor; controlled application

of water - to ensure satisfactory soil moisture; mowing in accordance with growth requirements - raise height of cut on areas known to be susceptible to desiccation; implementation of disease control programs at the proper time - fall and spring. (Programs to control or eliminate insects, weeds and thatch would have been implemented at earlier date.)

2. Control traffic, especially during critical periods.
3. Use mulches or covers if warranted.
4. If late winter-early spring play is anticipated, cut cups in the fall and fill with newspaper.

5. Cut temporary greens if needed.

6. Work toward elimination of *Poa annua*.

7. Develop programs to introduce new improved grasses as they become available. Seed greens lightly each fall to help eliminate *Poa annua*.

8. Avoid practices that stimulate excessive early growth or that produce soft succulent growth in early spring.

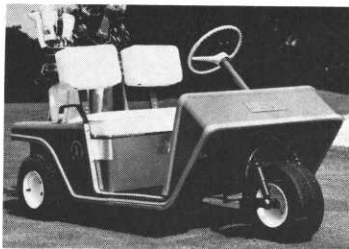
9. Apply fungicides as needed.

II. To Protect Against Traffic

1. Develop programs to control traffic during critical times and on critical sites.

2. Enlist support of all golfers.

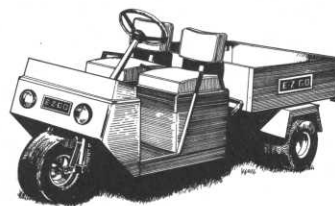
E-Z-GO



THE E-Z-GO
MAINTENANCE
MACHINE
GT-7 TRUCK

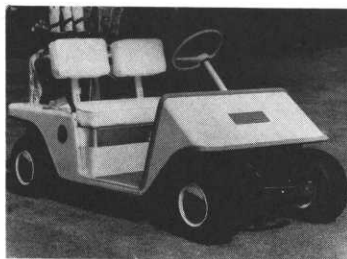
E-Z-GO GOLF CAR
THREE WHEEL MODEL

GAS OR ELECTRIC



E-Z-GO GOLF CAR
FOUR WHEEL MODEL

GAS OR ELECTRIC



LOWEST POSSIBLE PRICES ON ALL NEW AND
USED GOLF CARS AND GT-7 TRUCKS.

LARGEST SELECTION OF USED GAS AND ELECTRIC
THREE AND FOUR WHEEL GOLF CARS.

FOR MORE INFORMATION CALL OR WRITE

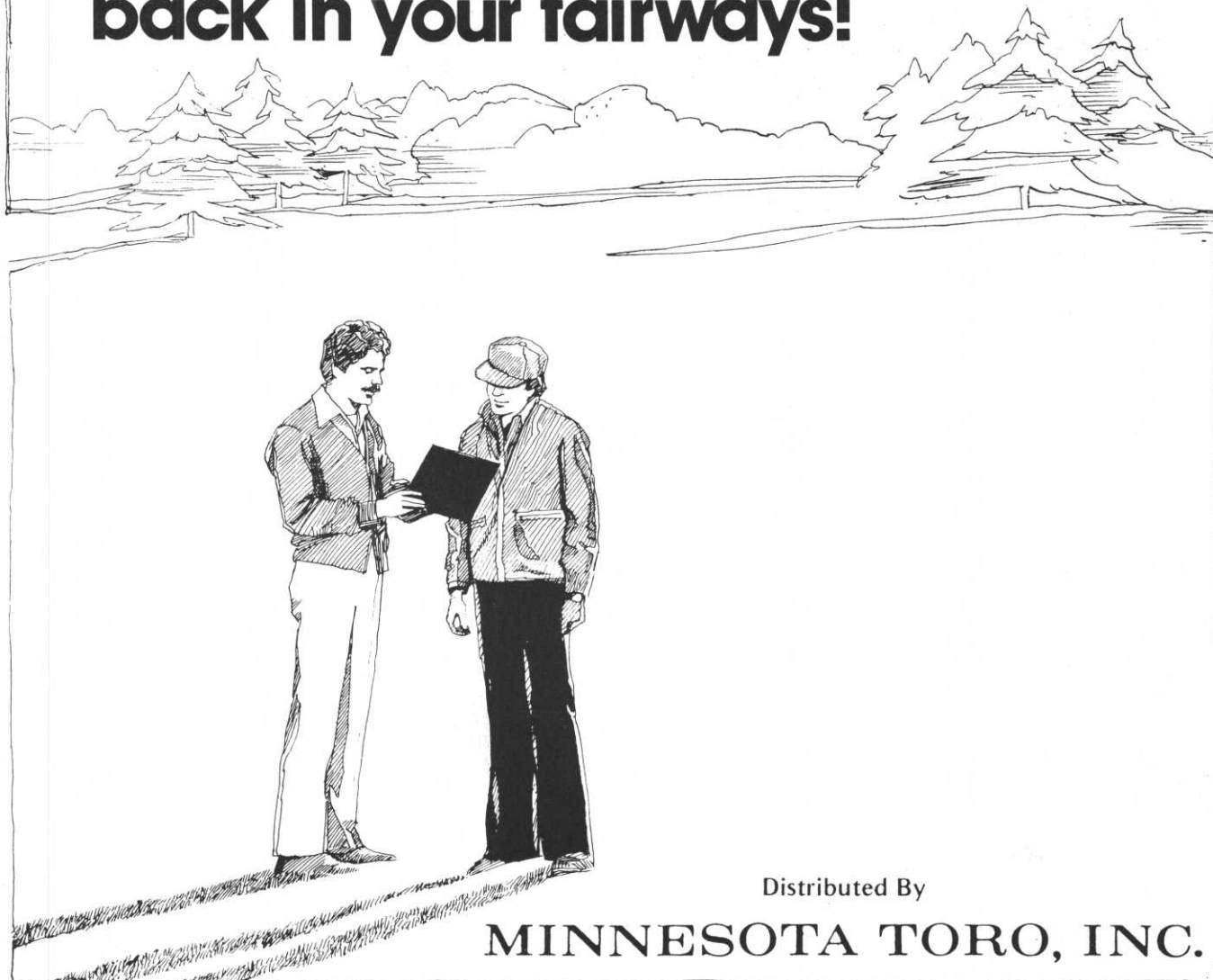
Stegner Golf Cars

DISTRIBUTORS OF E-Z-GO

5900 University Ave. NE Rainbow Bldg. Main St.
Minneapolis, Minn. 55432 Ortonville, MN 56278
Phone 612/571-4230 Phone 612/839-2511

SALES-SERVICE-LEASING-PARTS

USS Tournament Plus 19-5-9... We'll help put the green back in your fairways!



Distributed By

MINNESOTA TORO, INC.



A product for all reasons.

If you're looking down yellow or off color fairways, take a walk on them with your local USS Vertagreen distributor as soon as possible. He'll show you how USS Tournament Plus 19-5-9 can be the answer to your problems. This great product, developed especially for fairways, will release 48% of its nitrogen content in a sustained, uniform manner because of the urea-formaldehyde

content. And that deep, dark green color will come from the sulfate of potash.

It also contains guaranteed amounts of secondary and micro-nutrients as well as chelated iron for uniform growth. USS Tournament Plus is another reason we say "see the best, for the best" — and that's your local Vertagreen distributor. He'll put the green back in your fairways.



Agri-Chemicals
Division of United States Steel
P.O. Box 1685, Atlanta, Ga. 30301

3. Take pictures of damage and make presentation to greens committee and membership.

III. To Protect Against Ice Sheets and Ponded Water

1. Improve drainage.
2. Redesign and rebuild if necessary.
3. Leave snow as insulator as long as possible.
4. Apply dark material (Milorganite) to ice sheets to make them porous.
5. Mechanically break up solid (non-porous) ice sheets if temperatures range into 50's or greater for extended periods.
6. Apply fungicides as needed.

IV. To Protect Against Limited Soil Water

1. Water in the fall as late as is needed to ensure good fall and winter supply of soil moisture.
2. Use covers and mulches to protect vulnerable sites.
3. Plant superior permanent grasses.
4. Apply those cultural practices needed to ensure adequate storage of food reserves and that develop deep rooted, extensively branched grass plants.
5. Apply water to counteract desiccating conditions - haul if necessary.
6. Apply fungicides as needed.
7. Avoid all practices that stimulate early excessive growth or that produce soft, succulent growth.

RAIN BIRD®

IRRIGATION EQUIPMENT

"THE CHOICE OF PROFESSIONALS"

If your thinking of irrigation either new or conversion, let **RAIN BIRD®** the sprinkler professionals, help you tailor a system to your golf course and special conditions.

DESIGN ... SALES ... SERVICE

P & H WAREHOUSE SALES
9865 10th AVE. N.
PLYMOUTH, MINNESOTA 55441
612 - 545 - 2276

ECONOMIC DAFFYNITIONS

CAPITALISM: You have two cows. You sell one and buy a bull.

SOCIALISM: You have two cows and give one to a neighbor.

COMMUNISM: You have two cows. The government takes both and gives you some of the milk.

TOTALITARIANISM: You have two cows. The government takes both and shoots you.

GREAT SOCIETYISM: You have two cows. The government takes both, shoots one, milks the other and throws the milk away.

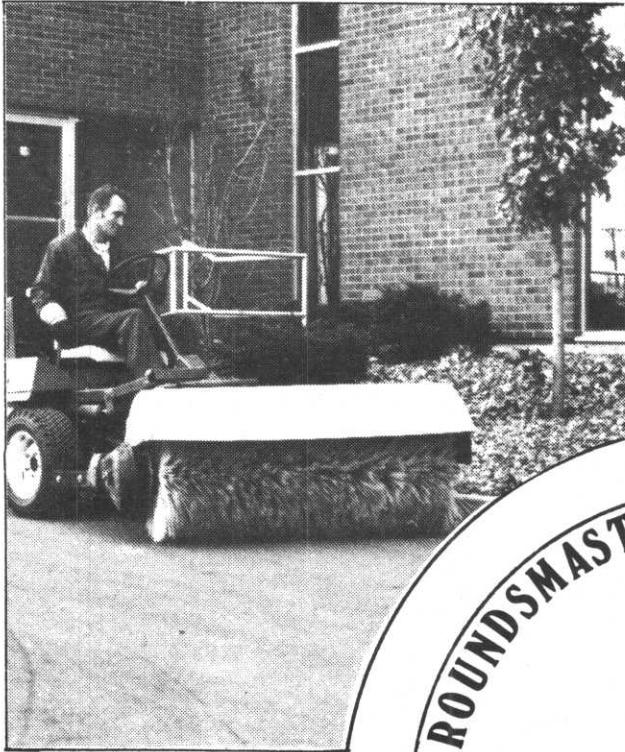
California Assoc. of Convention
Visitors Bureau Association
Newsletter, August, 1977.

FOR SALE

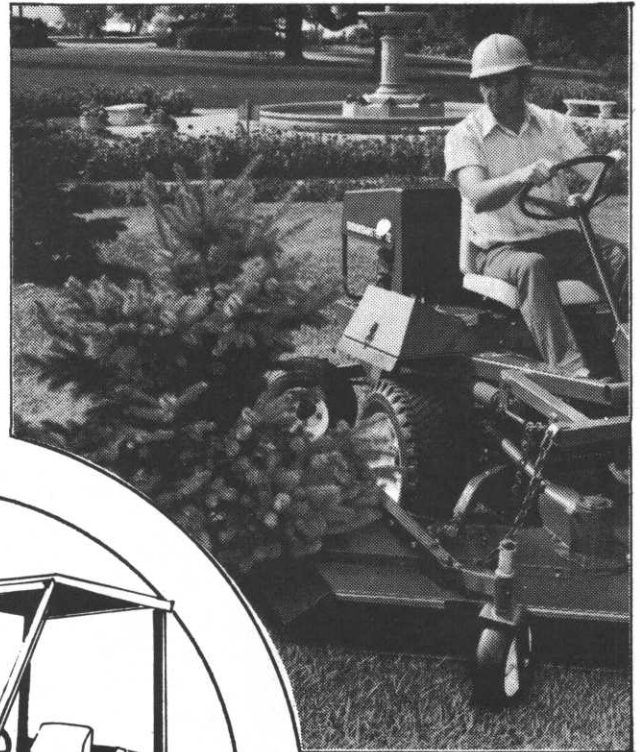
68" National Mower-Excel. Cond.; Mars Pick-up Sweeper-48" swath-Excel. Cond. good on hard surface & turf; Cushman Attachments-Fert. Spreader used once, 12' Boom Sprayer Assem.-used once. Call Mike 894-4368 or 944-3942.

GROUNDMASTER 72

IN ACTION

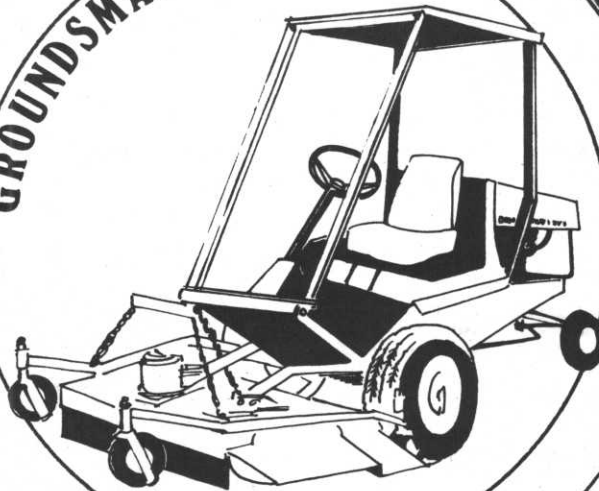


SPRING

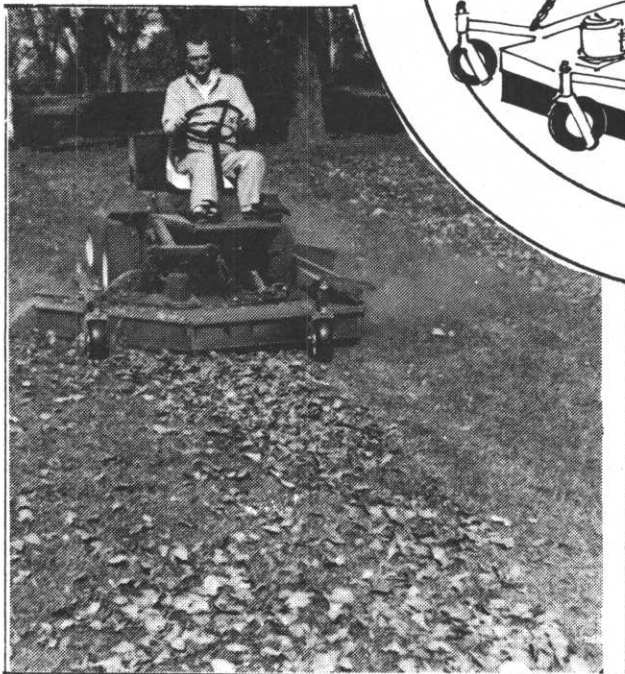


SUMMER

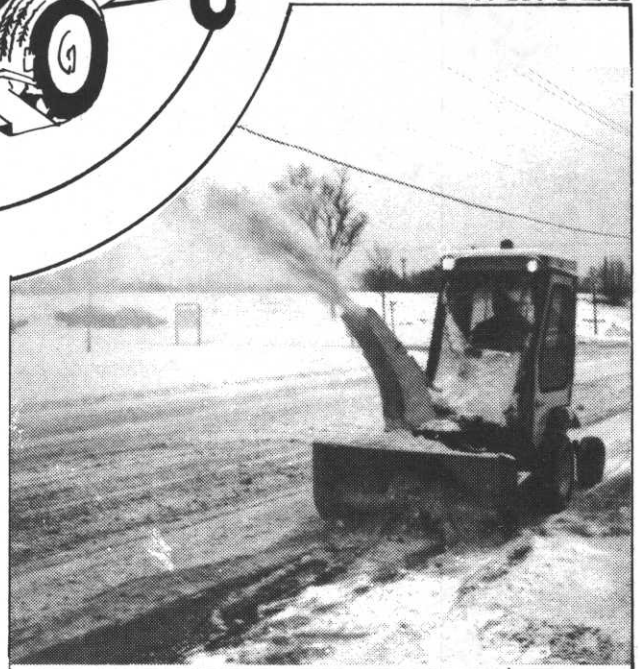
GROUNDMASTER 72



FALL



WINTER



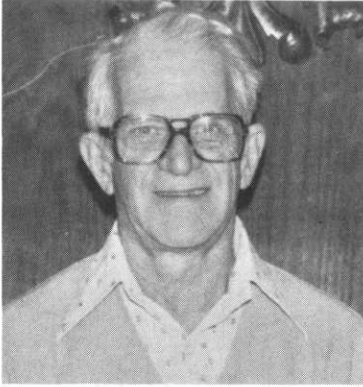
MINNESOTA TORO, INC.

14900 21st Avenue North ■ Plymouth, Minnesota 55441

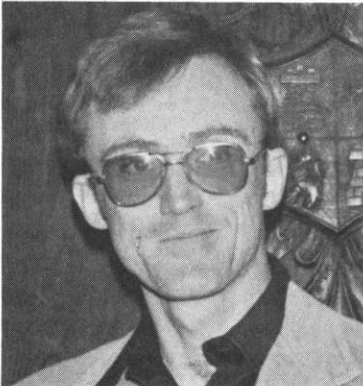
Phone Glenn Rasmussen at (612) 475-2200



MEET YOUR SUPERINTENDENTS !



JOHN LIGHTFOOT of the Cloquet Country Club is one of the extremely dedicated workers in the quest for a better turf. John not only belongs to M.G.C.S.A. which he joined in 1965 and G.C.S.A.A. but he also was the motivating force behind the formation of the Arrowhead Turf Association in 1968. This association is comprised mainly of superintendents in northeastern Minnesota with John serving as an officer in the organization from its inception until this spring. John also showed his desire to learn by becoming Minnesota's second Certified Golf Course Superintendent on December 6, 1974. John has served as superintendent at Cloquet since 1965 after previously having a long background in landscaping. When not at the course John likes to enjoy gardening and square dancing with his wife, Edith.



DALE CALDWELL is still serving his first full year at the Town and Country Club in St. Paul having been appointed superintendent of that club in July of last year. Prior to that Dale had served as the Assistant Superintendent at the Interlachen Country Club as well as working part time at Moorhead Country Club and Willmar Golf Club while attending school. Dale is well fortified with turf knowledge having received a Bachelor of Science degree in Turf Grass Management from Penn State University. A member of M.G.C.S.A. since 1974, Dale also belongs to the G.C.S.A.A. One of Dale's favorite hobbies is photography and I am sure two of his favorite photographic subjects are his wife, Linda, and their four and one-half month old daughter, Kim.

Nutrient deficiencies, weeds, diseases, thin turf, insects.

For the superintendent who has everything . . . or anything . . . or who just wants to make a good thing better . . . ProTurf offers research tested, golf course proven professional turf products.

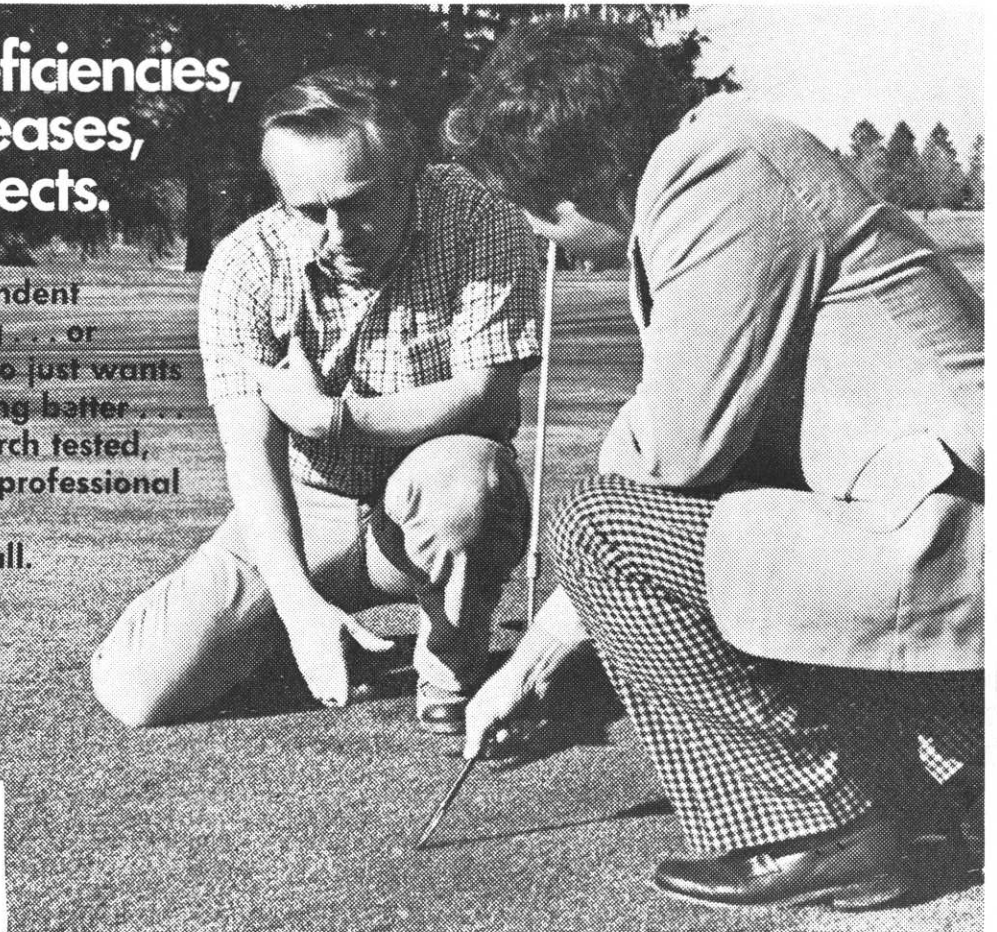
Just give me a call.



A division of
O. M. Scott & Sons

Mike Redmond

Technical Representative
8364 Kentucky Avenue North
Brooklyn Park, Minn. 55445
Telephone: 612/425-1028



Ask your Northrup King man what to do about traffic and he might start you on Parade.

Northrup King is a primary distributor of Parade Kentucky Bluegrass, a vigorous, remarkably wear-tolerant variety that provides rapid recovery from damage.

So if you've got a traffic problem and you ask your Northrup King man what to do about it, he might recommend Parade.

On the other hand, he might not. He might recommend another variety — or a blend or a custom blend—that will perform better under your particular circumstances.

That's the beauty of talking with a Northrup King man. He's not committed to any one approach. He's committed to finding the best solution to a given problem.

If that sounds good to you, write for the name of your Northrup King representative or distributor. He won't put you on Parade or anything else until he thoroughly understands your problem.



NORTHROP KING CO.
BOX 959 • MINNEAPOLIS, MINNESOTA 55440

