

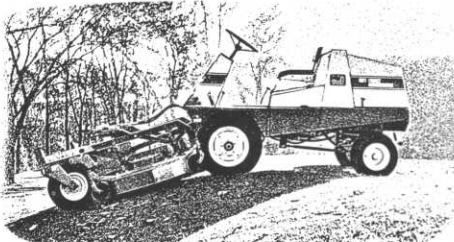
Gould's have sensible answers for '78 budgets - Here's one!

Here's the 72" out-front rotary mower that doesn't slip and slide all over side slopes.

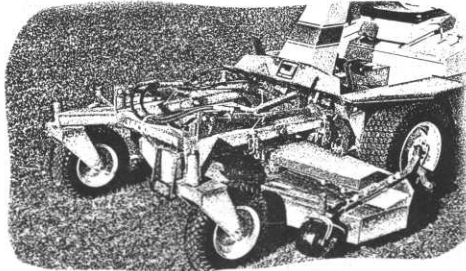
When Jacobsen designed this out-front commercial, they knew it could do all of the things they wanted it to.

Like mow up to 30 acres a day. Climb up and down curbs. Trim tight around trees. And with optional accessories, it can mulch leaves, plow snow or blow snow. And even sweep.

The trick was to distribute the weight so it would grip the turf with all six wheels when angling along side slopes.



Cutter deck tilts up and down for mowing gullies and bank edges.



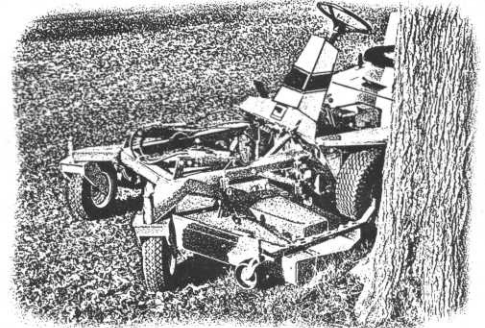
Front wheels support cutter deck for super stability.

That's why the cutting deck is mounted on the carrier, with the two front wheels supporting it. This design keeps the rear wheels from lifting, and makes the Jacobsen the most stable out-front rotary on the market.

Not only that, the weight on the drive wheels can be adjusted for different terrain conditions. For reliable traction.

This Jacobsen out-front rotary meets the tough power mower

safety standards of the American National Standards Institute, Inc. (ANSI). No mean feat in itself.



Can perform zero turning radius, trims like a small mower.

We suggest you ask us for a demonstration of this superbly designed mower-trimmer-mulcher-sweeper-snow blower-plow-combination-miracle-machine.

It's the one that digs in on side slopes.

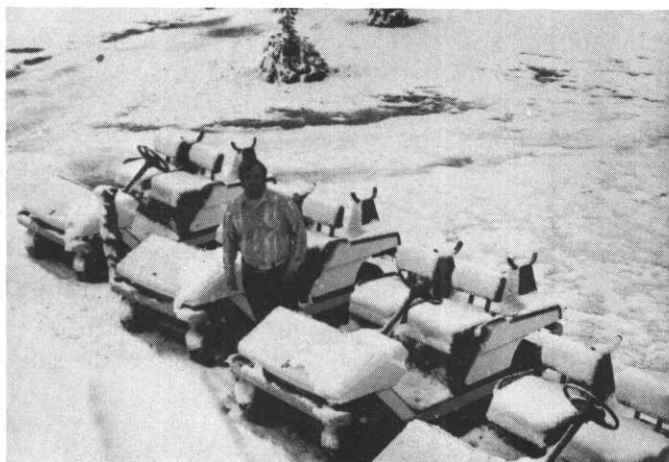


Take a look at leadership.

R.L. Gould Co., 3711 Lexington Ave No., St. Paul, MN / (612) 484-8411

OCTOBER WEATHER WAS SNOW FUN !

For several days preceding the scheduled October meeting at Chisago Lakes Golf Club Host Superintendent Dave Zimmer and his crew had been grooming their fine nine hole course to show it off to its best advantage to the golfing superintendents of the M.G.C.S.A. Then Mother Nature took a hand in the form of about two to three inches of thick, white, wet, fluffy snow and we only had Dave's word that the course was in excellent shape. Knowing Dave, we have to believe it was so! Despite rather unfavorable driving conditions, a good crowd did show up at the informal meeting and dinner that followed. There is something about a warm, cozy clubhouse, a little libation and a white scene outside that seems to increase fellowship. It was a happy evening.



WHITE MOISTURE. Host Superintendent Dave Zimmer poses by grounded golf carts. Do golf carts use antifreeze?

ROUND TABLE DISCUSSION. "A bunch of the boys were whooping it up at the Malamute Saloon."

HAVE YOU DONE YOUR PART ?

Keith Scott, Chairman of the M.G.C.S.A. Research Program, would like to point out that everyone benefits from the results of research. But is everyone doing his part in helping finance the program? At this point the following ten contributors have done their part. Join them before December 1.

Charlie Wilson, Sewerage Commission,
Milorganite Division
Forest Hills Golf Club
Bergerson-Caswell Co.
R. L. Gould Company
Hazeltine National Golf Club

Edina Country Club
Arrowhead Turf Association
Minnesota Golf Association
Oak Ridge Country Club
Peter Dane, Silver Springs Golf
Club, Monticello

M.G.C.S.A. thanks the above parties for their interest and help in specialized turf research. Please send your contributions to Keith Scott, 3445 County Road 73, Hopkins, Minnesota 55343.

PROPOSED BYLAWS AMENDMENTS

The bylaws of almost every organization provide for a system of amendments whereby changes can be made from time to time to meet changing times and conditions. Over the years since the inception of M.G.C.S.A. a number of amendments have been added to the Association's Bylaws. Following discussions at several Executive Board meetings during the past year, the Board has approved the submitting of the following new amendments for approval at the Association's 1977 Annual Meeting. These particular portions of the bylaws appear here in full with changes or additions underlined.

ARTICLE III

MEMBERSHIP

Section 1. Membership shall be of seven classes: Charter, Class A, Class AA, Class B and B-II, Class C (Student), Class F and F-II and Honorary.

Section 2. Class AA Member: Any individual who has been a Charter, Regular or Class A Member for a minimum of ten years and who has permanently retired from the actual work of maintenance supervision in the area covered by the Association may become a Class AA Member at the discretion of the Executive Board after duly notifying the Executive Board of his retired status in writing. However, the Executive Board may, at its discretion, grant Class AA Membership for reasons of disability although the member has not met the ten year requirement. Class AA Members shall have all the privileges of the Association except that of holding office. He shall not be required to pay dues. Class AA Membership is automatically forfeited if holder returns to actual maintenance supervision in the Association area. The president shall report on the Class AA Members at each Annual Meeting.

Class C (Student): Any individual enrolled in a recognized turf management or related school as attested by his or her instructor. Class C Members shall have all the rights and privileges of the Association except the right to vote or hold office.

ARTICLE IV

DUES

Section 1. Annual dues for Class A Member, Class B-I and B-II Members, Class C Member, Class F-I and F-II Members shall be the sum fixed at the last Annual Meeting of the Association and shall be prorated quarterly during the first year of membership.

All members of the M.G.C.S.A. are urged to read these proposed bylaw changes carefully and be prepared to vote on them at the Annual Meeting.

John V. Lightfoot
Bylaws Chairman

NOMINATING COMMITTEE REPORT

Chairman Dean Sime has submitted the following names to be voted upon for officers and directors of the Association at the Annual Meeting:

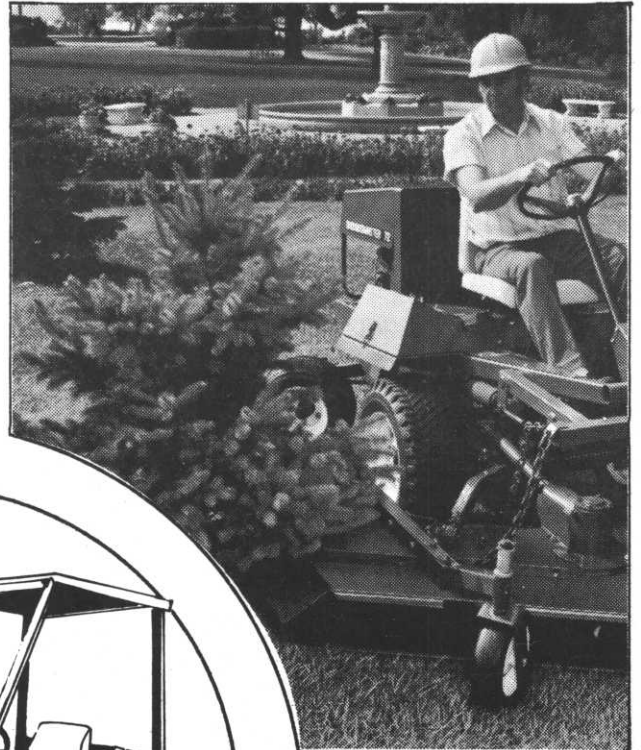
President: Keith Scott	Treasurer: Dick DeSplinter
Vice-President: George Ostler	Directors: Denny Hendrickson
Carl Johnston	(Two to be elected) Dick Grundstrom
	Bill Johnson
	Leif Erickson

GROUNDMASTER 72

IN ACTION

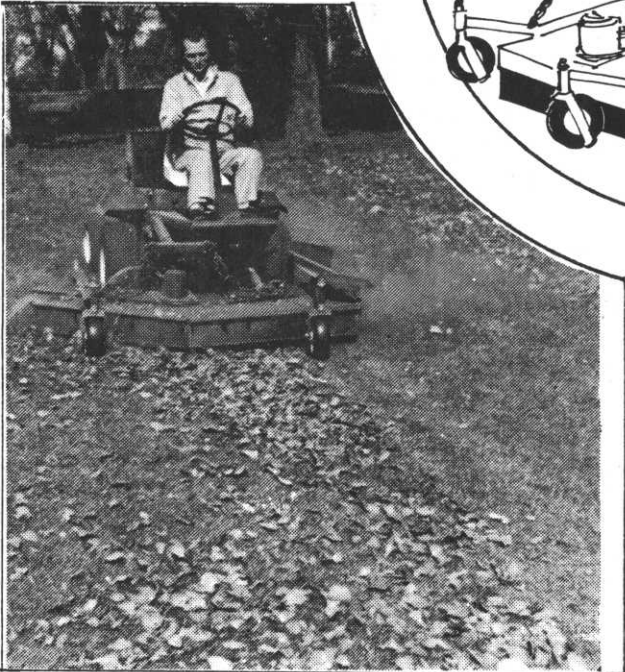


SPRING



SUMMER

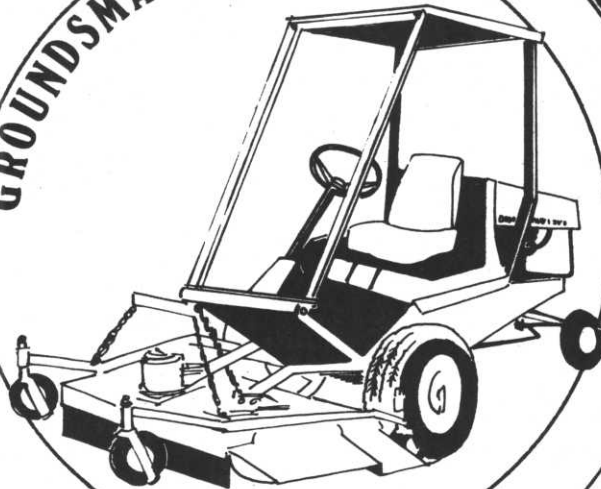
FALL



WINTER



GROUNDMASTER 72



MINNESOTA TORO, INC.

14900 21st Avenue North ■ Plymouth, Minnesota 55441

Phone Glenn Rasmussen at (612) 475-2200



O. J. Noer Research Foundation, Inc.

Research

In 1976, research expenditures were increased from \$16,000.00 to \$18,500.00. Research projects supported are as follows:

- Thatch — Texas A&M University
- Sandy Soil Potash Reserves — University of Florida
- Chemical Soil Testing — Pennsylvania State University
- Turfgrass Rooting — Rutgers University
- Herbicide-Disease Relationships — Iowa State University
- Herbicide-Thatch Relationships — University of Illinois
- *Poa annua* Management Relationships — Washington State University.

Accomplishments

Through 1976, the O. J. Noer Research Foundation has contributed \$118,500.00 toward advanced research in the turfgrass field. Information gained from these studies has been of use throughout the industry. Advanced degrees gained through this research help assure a supply of highly qualified research and extension personnel for the turfgrass industry.

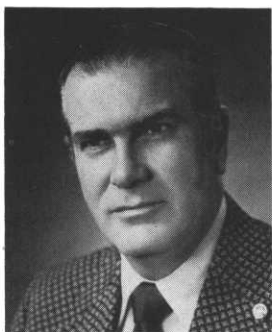
Some Noer Foundation Firsts

- 1st to establish a Memorial Turfgrass Library.
- 1st to gain industry support for turfgrass research on a continuing basis.
- 1st to establish an investment fund from donations so research could be supported on a continuing basis.
- 1st to publish extra Master theses for research workers.

A total of 14 projects, conducted in 6 universities, have produced 8 advanced degrees in turfgrass-related fields.

Jacobsen Promotes Thomas

Roger J. Thomas has been named Vice-President, International Sales Operations for the Turf Products Division of Jacobsen Manufacturing Company, Racine, Wisconsin.



The promotion comes as a part of the Division's Forward Business Plan to substantially increase the international segment of the turf business.

Thomas, who has been primarily responsible for building domestic sales to its current level, will now take charge of developing worldwide sales distribution and coordinating international product planning, service, training, advertising and engineering.

Thomas began with Jacobsen in 1947 and is recognized worldwide for his expertise in the turf equipment field.

Mendakota Fetes Stodola

The Harold Stodola Golf Tournament and Appreciation Day held recently at the Mendakota Country Club, St. Paul paid tribute to a man whose career in golf course management spans fifty years. Some 125 fellow golf course superintendents, club members, Minnesota G.C.S.A. members and other friends gathered for the tournament and a banquet to honor Stodola, who became superintendent of Mendakota in 1967. At the banquet he was presented a plaque and a coat bearing the club crest for his years of service to his profession.

Stodola, who served as president of G.C.S.A.A. from 1941 to 1945, received G.C.S.A.A.'s Distinguished Service Award earlier this year. Although he has turned over his duties as superintendent to his assistant, Abbott Barron, Stodola continues to work at Mendakota.

USS Tee-Green 16-4-8... When you want uniform particle size we can deliver

CALL
MINNESOTA TORO
FOR NEW 78 PROGRAM



HUGE DISCOUNTS

Savings up to \$44.80 per ton
on early orders



When you apply USS Tee-Green 16-4-8 to your tees, greens and aprons you're assured that's where it will stay. There's no need to worry about mower pickup because the uniform particle size (90% minus 10 + 20 Mesh U.S. Sieve) means the granules will work their way quickly down through the grass to provide a consistent and even feeding.

Of course this is just one of the advantages of this great

product. Your local USS Vertagreen distributor can tell you much more about the advantages of nitrogen derived from urea-formaldehyde, the chelated iron, sulfate of potash and the guaranteed amounts of secondary and micro-nutrients in this fine product. USS Tee-Green is another reason we say, "see the best, for the best" — and that's your local Vertagreen distributor. He can always deliver.

Distributed By

MINNESOTA TORO, INC.



Agri-Chemicals

Division of United States Steel

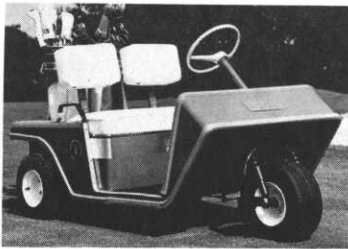
P.O. Box 1685, Atlanta, Ga. 30301

IT'S YOUR PUBLICATION!

Now that we are all getting our golf courses ready for winter and we have some time to think of other things, I would like to suggest giving some thought to the HOLE NOTES. It has been obvious for some time that member participation has drastically dropped off. I realize the summer gets hectic and most of us spend quite a bit of our thoughts and time toward that effort, but it would take only a minute to call the office with an interesting bit of news. If the superintendent down the road has a tournament or someone is hospitalized or any item you think newsworthy, share it with all the membership through the HOLE NOTES. It is our publication, written for superintendents and I think it should be written by superintendents. It is only through our combined efforts that we can improve it.

Jim Lindblad, President

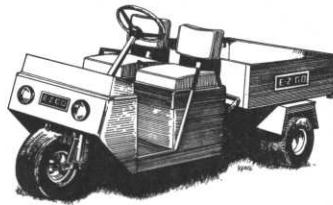
E-Z-GO



**THE E-Z-GO
MAINTENANCE
MACHINE
GT-7 TRUCK**

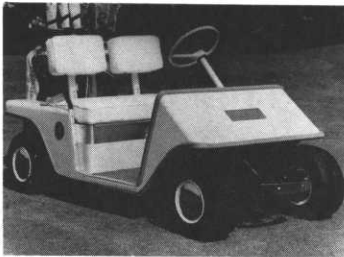
**E-Z-GO GOLF CAR
THREE WHEEL MODEL**

GAS OR ELECTRIC



**E-Z-GO GOLF CAR
FOUR WHEEL MODEL**

GAS OR ELECTRIC



LOWEST POSSIBLE PRICES ON ALL NEW AND USED GOLF CARS AND GT-7 TRUCKS.

LARGEST SELECTION OF USED GAS AND ELECTRIC THREE AND FOUR WHEEL GOLF CARS.

FOR MORE INFORMATION CALL OR WRITE

Stegner Golf Cars

DISTRIBUTORS OF E-Z-GO

5900 University Ave. NE Rainbow Bldg. Main St.
Minneapolis, Minn. 55432 Ortonville, MN 56278
Phone 612/571-4230 Phone 612/839-2511

SALES-SERVICE-LEASING-PARTS

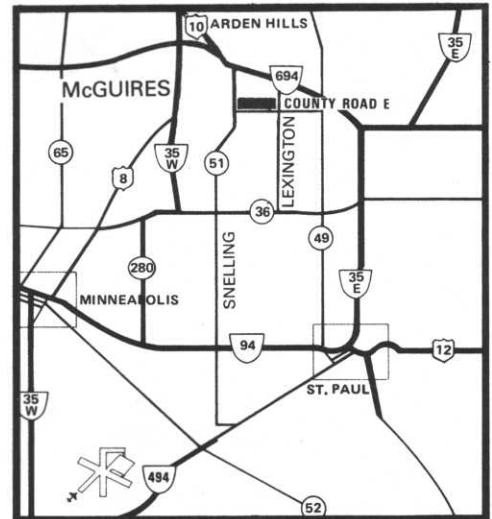
DIRECTIONS



**1201 WEST COUNTY ROAD E
ARDEN HILLS, MINN. 55112**

Easy Access

Conveniently located on the north edge of the Twin Cities just 1/2 mile south of 694 at the Lexington Avenue exit, with easy access from 35W on the west and 35E to the east. Ample free parking with pull-through spaces.



* BE SURE TO MAKE YOUR AD- *
* VANCED RESERVATION ON THE *
* CONFERENCE RESERVATION *
* FORM ON PAGE 9. *

EMPLOYMENT OPPORTUNITIES

Applications are now being accepted for the following positions. January 15, 1978 is the deadline for all applications.

1. Golf Course Superintendent, Owatonna Municipal Golf Club.
Owatonna is a 9-Hole golf course with the possibility of expanding to 18-Holes in the near future. The summer crew consists of five to six people and the superintendent's position is for nine months. Fringe benefits include a house plus utilities, city retirement and medical insurance.

If interested, send resume to: Louis Jandro, Jr., Chairman
315 North Maple
Owatonna, Minnesota 55060

2. Golf Course Superintendent, Terrace Golf Club, Staples, Minnesota.
Terrace is a 9-Hole golf course with pop ups on the greens and manual irrigation on tees and fairways. They would like to employ a man who would manage the clubhouse, pro shop and the golf course. If they don't find such a man, they will hire a superintendent with employment for seven months, April 1 - November 1. Salary will depend on the position the applicant accepts.

If interested, send resume to: Glen Hasselberg
c/o Staples High School
Staples, Minnesota 56479
218/894-2430, Ext. 120

3. Golf Course Superintendent, Moorhead Country Club.

Moorhead is an 18-Hole golf course with automatic tees and greens and manual fairways. The summer crew will consist of eight to ten people and the superintendent's position is year around. The salary and fringe benefits are very attractive. Anyone with two to three years experience as a golf course superintendent may send resume to:

Mr. Bruce Briggs
c/o Box 915
Moorhead, Minnesota 56560

For Fast,
Friendly Parts
Service Call
Fran at
612-472-4167



We carry a very complete line of parts for all the machines we sell.

- *HAHN Self Propelled Gang Mowers, Greensmowers, Aeriators
- *MYERS Sprayers
- *SMITHCO Red Rider, Trucksters, Sprayers
Trap Rake
- *HOWARD 48" to 82" Rotary Mowers
- *HECKENDORN 36" to 88" Rotary Mowers
- *TURF-VAC Leaf Vacuums
- *ROSEMAN Gang Mowers
- *DIADEM Fertilizer Spreader
- *TEX. REF. Tire Seal
- *WD-40 Preservative
- *HOLDER Diesel Tractors

KROMER CO

3455 County Road 44, Mound, Mn. 55364
TELEPHONE 612-472-4167

NOVEMBER MEETING

Monday, November 14 the Hanson House in Long Lake will be the scene of the monthly meeting of M.G.C.S.A. Business Meeting slated for 4:00 p.m. Cocktails, compliments of Bud Shaughnessy of Long Lake Ford and Tractor Co., from 5:00 p.m. to 6:00 p.m. Dinner to follow. Reservations to Larry Mueller a must. Send to 15065 Green Oaks Trail S.E., Prior Lake, Minn. 55372 by November 11.

50th Annual Turf Conference & Business Meeting

November 30 & December 1, 2, 1977



1201 WEST COUNTY ROAD E
ARDEN HILLS, MINN. 55112

Featured Speakers

DR. WARD STIENSTRA
DR. DON WHITE
DR. GEORGE BLAKE
G.C.S.A.A. PRESIDENT TED WOEHRL
U.S.G.A. REP. CARL SCHWARTZKOPF
ROGER THOMAS
DR. JOE VARGUS
DR. HARRY NIEMCZYK

Special Events

WEDNESDAY, NOVEMBER 30	ANNUAL MEETING	5:00 P.M.
THURSDAY, DECEMBER 1	STAG PARTY	5:30 P.M.
FRIDAY, DECEMBER 2	BANQUET	
	COCKTAILS	6:30 P.M.
	DINNER	8:00 P.M.
	DANCING	9:00 P.M.

Registration

NOVEMBER 30 STARTING AT 11:00 A.M. UNTIL 1:30 P.M.
DECEMBER 1 STARTING AT 7:45 A.M. UNTIL 9:00 A.M.

* STUDENT AND GUEST TICKETS FOR THE *
* CONFERENCE ARE \$8.00 PER DAY. *
* STAG TICKETS WILL BE AVAILABLE *
* FOR \$9.00 EACH. *

* ATTENTION LADIES: *
* DUE TO LACK OF INTEREST THE LADIES' *
* FORMAL CONFERENCE PROGRAM IS CANCELED. *
* THERE IS STILL A LADIES' GET-TOGETHER *
* ON WEDNESDAY AFTERNOON IN THE ASSOCIATION *
* HOSPITALITY ROOM. COMPLIMENTARY COFFEE *
* AND ROLLS. *

ADVANCED RESERVATIONS - 50TH ANNUAL TURF CONFERENCE AND BUSINESS MEETING
MCGUIRES INN, ARDEN HILLS, MINN.

NOVEMBER 30, DECEMBER 1 & 2, 1977

NAME	CONFERENCE REG. \$30.00	STAG TICKET \$9.00	EXTRA BANQUET TICKET \$11.00	TOTAL
_____	_____	_____	_____	_____
_____	_____	_____	_____	_____
_____	_____	_____	_____	_____

MAKE CHECKS PAYABLE TO M.G.C.S.A.
SEND TO: CARL JOHNSTON, 20985 HARROW AVE. NO.
FOREST LAKE, MINNESOTA 55025

TOTAL ENCLOSED \$ _____
NOTE: CONFERENCE FEE INCLUDES ONE
BANQUET TICKET.

ADVANCED RESERVATIONS FORM MUST BE RECEIVED BY NOVEMBER 25.

What does your Northrup King man offer you besides quality turfseed?

A willing ear. We listen carefully to your problem and study it thoroughly so we can solve it together.

The voice of experience. Northrup King continues to be a leader in the development of new varieties and blends.

Reliability. Northrup King has a testing and quality control program that is your assurance of quality seed.

At his fingertips, a wide range of proven turfseed varieties. And we can custom blend to meet your special needs.

The right turfgrass decision can improve the quality of your turf. It can also save you maintenance dollars.

So the person who helps you make that decision is very important to you. That's why we stress the professionalism of your Northrup King man. And his willingness to get involved with your needs.

Grass-stained knees, if that's what it takes to understand your problem. Northrup King people get involved.

For a thoroughly professional evaluation of your turf requirements, talk with your Northrup King representative or distributor. He offers you quality turfseed—and a lot more.

Feet firmly planted in your area, so we can recommend varieties and formulate mixtures that will work in your particular region.



NORTHROP, KING & CO.
BOX 959 • MINNEAPOLIS, MINNESOTA 55440