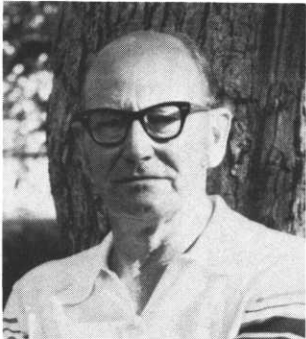


MEET YOUR SUPERINTENDENTS !



George Jennrich, secretary of M.G.C.S.A., is now in his sixth year as superintendent at the Woodhill Country Club. George, although not old in years, is long on experience, having obtained his first job at the Somerset Country Club at the age of fifteen. After working at Somerset for a number of years, George put in some time at Cannon Country Club, Town and Country Club and Custom Turf before securing his present position at Woodhill. In between times, George was awarded a Bachelor of Science degree in Agriculture from the University of Minnesota and also spent two years in the service. A member of G.C.S.A.A., George and his wife, Mary, have two sons, Scott, three and Eric, six months.



John Fuller, golf course superintendent at the Midland Hills Country Club in St. Paul, is one of the long time and active members of M.G.C.S.A. He joined the association in 1951 and was honored with his quarter century club plaque last year. John, who is also a member of G.C.S.A.A., started working for his brother, Irv, at Mankato in 1938. In 1947 John joined the University Golf Course staff and worked under the fine tutelage of Art Anderson and Herman Senneseth for ten years. From there he moved on to Midland Hills where he is now serving his twenty-first year. John and his wife, Evelaine, have five children. Their son, Tom, now works as John's assistant and is eyeing the same success in golf course maintenance as his dad.

Minnesota Golf Course Superintendents' Association



Suite 301
6550 York Avenue South
Edina, Minnesota 55435

HOLE NOTES