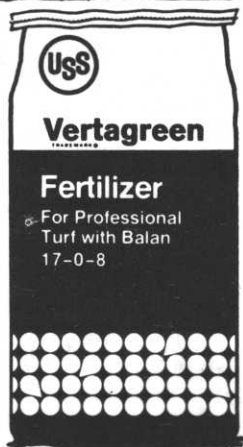


USS Vertagreen 17-0-8 with Balan... We'll help you weed and feed!



Your local USS Vertagreen distributor has a proven fertilizer for professional turf that performs two jobs at once. USS Vertagreen 17-0-8 with Balan gives your fairways a healthy shot of quick-acting nitrogen — and the supply continues because 25% of the nitrogen is derived from urea-formaldehyde. It also controls Poa Annuua, crabgrass, goose grass, water grass and foxtail — thanks to Balan, the highly effec-

tive pre-emergence herbicide.

This versatile and economical product contains sulfate of potash for lush, green color and is rounded out with vital secondary and micro-nutrients including chelated iron. USS Vertagreen with Balan is another reason we say, "see the best, for the best" — and that's your local Vertagreen distributor. He can help you weed and feed.

Best Products! / Best People!

Distributed By

MINNESOTA TORO, INC.



Agri-Chemicals

Division of United States Steel

P.O. Box 1685, Atlanta, Ga. 30301

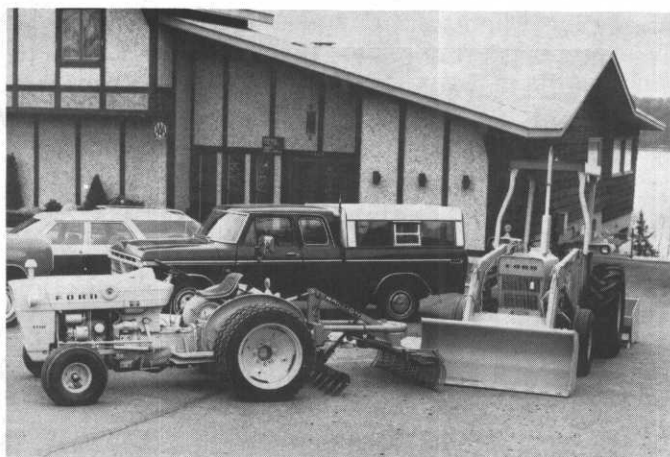
November Meeting Report

The November Meeting of M.G.C.S.A. at the Hanson House in Long Lake, just outside Wayzata, drew an excellent attendance. On arrival at the Hanson House the superintendents were able to stop and inspect two of Long Lake Ford's tractors that were on display. We would like to thank Bill and Bud Shaughnessy and the whole gang for hosting the cocktail party before dinner.

President Dean Sime called the business meeting to order at 4:30 p.m. George Ostler, treasurer, reported that the treasury stood within \$31.00 of last year at this time and that the Board had decided there was no necessity to raise the dues in 1977. Rich Rannels reported that the Nominating Committee is hard at work on a slate for the December Annual Meeting.

Clem McCann, membership chairman, proposed the name of Allen Pooch of the University of Minnesota Golf Course for membership in Class B-2. Russ Adams gave some background on Charlie, as he is called, and the membership was unanimously approved. Clem also announced the names of three new associate members: Mr. Harvey L. Moelter of Moelter Construction Co. (Mr. Moelter is a golf course building contractor); Mr. Hugh Cholick, a sales representative for Diamond Shamrock Corp.; Mr. Jim Pagel, the grounds keeper for Independent School District #191 in Burnsville. Mr. Pagel was present at the meeting and was presented with his membership badge.

Dick DeSplinter reported that all arrangements were set for the 49th Annual Turf Conference. Room reservations should be handled directly with McGuire's. Jim Lindblad reported that the Research Fund has received a real shot in the arm from two donations: Par Aid Products donated \$250.00 and the Arrowhead Turf Association gave \$200.00. \$15.00 was also collected by that tough Sargent-at-Arms, Charlie Tillman, from every member who forgot to wear his name tag. This brings the total Research Fund to \$1630.00 which is much closer to our goal of \$2000.00. Jim Lindblad also reported that the awards for 25 years of membership in M.G.C.S.A. will be presented at the Annual Meeting. The original idea was to present a pin but this has been changed to a plaque which could be displayed in the superintendent's office. The excellent dinner was served early so that all had time to rush to the TV for Monday night football.



PRODUCT DISPLAY. Two of Long Lake Ford's most popular pieces of equipment on display at the Hanson House for all superintendents to inspect.



BUSINESS SESSION. President Dean Sime chairs his last monthly business meeting before the Annual Meeting at the Turf Conference in December.

Dean Sime Bids Farewell

The year of the Bicentennial was certainly one we will not forget. First, we had the opportunity to host the National Conference. Though many were skeptical, it turned out to be a tremendous success. Even yet today we receive favorable comments from people around the country who attended. Thanks to you, an impression was made that will last a lifetime.

Our annual family picnic held in July at the Arboretum was another success, thanks to our arrangements chairman, George Jennrich. It was great to see the many wives and children in attendance. Our hats off to George for the great job he has done! I doubt if many of you realize the difficulty involved in making the arrangements for an organization such as ours. George has certainly risen to the challenge and all of us owe him our thanks.

The tournament this year, held by Superintendent Nick Dunn at Hazeltine, was another highlight of the past season. Randy Nelson of Owatonna walked off with all the honors but all of us had a super time trying to win all the other events and prizes. A special thank you to Carl Johnston for putting the entire package together. You just did a fantastic job.

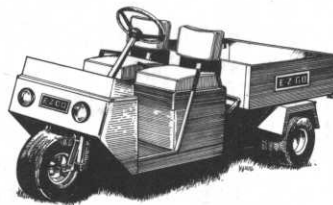
E-Z-GO



**THE E-Z-GO
MAINTENANCE
MACHINE
GT-7 TRUCK**

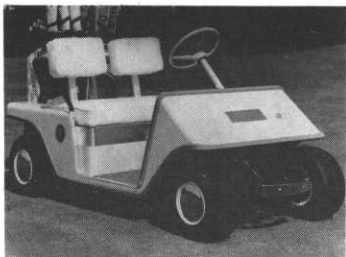
**E-Z-GO GOLF CAR
THREE WHEEL MODEL**

GAS OR ELECTRIC



**E-Z-GO GOLF CAR
FOUR WHEEL MODEL**

GAS OR ELECTRIC



YEAR END SALE

LOWEST POSSIBLE PRICES ON ALL 1976 NEW AND DEMONSTRATOR GOLF CARS AND GT-7 TRUCKS.

LARGEST SELECTION OF USED GAS AND ELECTRIC THREE AND FOUR WHEEL GOLF CARS.

FOR MORE INFORMATION CALL OR WRITE

Stegner Golf Cars

DISTRIBUTORS OF E-Z-GO

5900 University Ave. NE Rainbow Bldg. Main St.
Minneapolis, Minn. 55432 Ortonville, MN 56278
Phone 612/571-4230 Phone 612/839-2511

SALES-SERVICE-LEASING-PARTS

The next highlight is the upcoming Annual Conference. Dick DeSplinter rose to this challenge and every indication is that it will be bigger and better than ever. A special thank you in advance to Dick and his committee for a successful conference.

Another area which has really given the M.G.C.S.A. a great deal of pride is the direction and production of our monthly newsletter. I have received letters from several people around the country who have taken time to write and compliment the M.G.C.S.A. on its HOLE NOTES. Credit must be given to Warren Rebholz and his staff for giving us such a professional publication. From all of the members of M.G.C.S.A. we thank you for your contribution.

As President of M.G.C.S.A. it has been an exciting and rewarding year. To serve when we hosted the National Conference was indeed an honor and I thank all of you for giving me that opportunity. I want to personally thank all the many committees and chairmen who have given so much to make this year one which we will all remember. The many tasks have been accepted with enthusiasm and the results have been outstanding.

As I vacate the office of President of M.G.C.S.A., it gives me a comfortable feeling to know there is a wealth of talent in our organization. You can rest assured that we will be in good hands for many years to come.

GOULDS extends HOLIDAY GREETINGS AND YOUR BEST CHOICE OF GANG MOWERS FOR '77

Those big mowing jobs require big decisions about big equipment.

So when the time comes to make an investment in mowing equipment, it's nice to know there's a place where you can go and pick what you need from the most complete line in the whole business.

That's our place.

Take our Jacobsen G10 Mowing Tractor. Designed for heavy duty turf maintenance, it can easily pull as many as 11 gang mowers over rolling terrain.

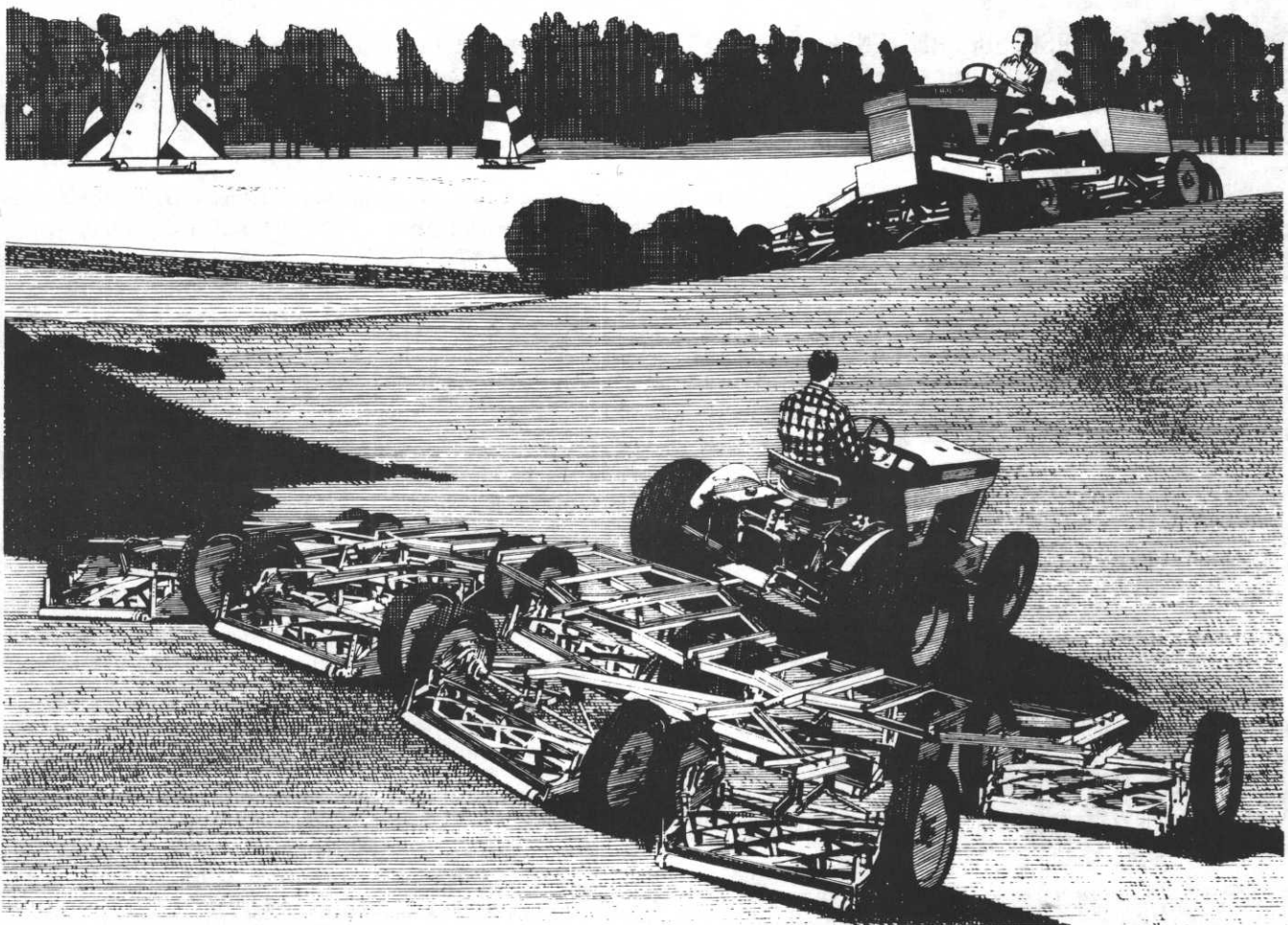
Or look at our Jacobsen F10 Mowing Tractor. One man can mow up to 62 acres in 8 hours.

Rear wheel steering. No skipping, no skidding, no uneven cutting on the turns. The front wheel drive gives better traction on grades and side-hills. And because the mowing units are out in front of the tractor wheels, there are no wheel streaks, either.

Then there's the big Jacobsen F20 9-gang Mowing Tractor. All the same fine features as the F10, only it has two more reels, cuts a huge 19-foot swath, and one man can mow about 76 acres in a normal day.

We have a lot more choices. All sizes.

For any mowing job you've got, large or small. For fairway or blitzer applications. You name it. We've got it.



3711 LEXINGTON AVENUE NORTH
ST. PAUL, MINNESOTA

(612) 484-8411

R. L. GOULD SETS CHARTER TRIP TO PORTLAND

Mr. Gordon Miller of the R. L. Gould Company is handling arrangements for the group flight to the G.C.S.A.A. 48th International Conference and Show, Portland, Oregon beginning February 6, 1977. The group will leave Minneapolis via a Northwest Charter No. 115 at 8:45 a.m. on Sunday, February 6. The Gould Charter has always been a means of saving on transportation expenses and gaining some enjoyable company. The round trip fare is \$223.00 (based on tariff in effect November 1, 1976). Arrival in Portland will be at 11:18 a.m. with breakfast en route.

You may also be provided with room accommodations at the TRAVELODGE-Coliseum which is very close to the Convention area. (\$29.00/day). Motorcoach transport from Portland Airport to TRAVELODGE will be available.

Your reservation commitment must be in Gould's hands no later than January 1, 1977. Most of you will be receiving a special letter of invitation to join the group. If you are accidentally missed, Mr. Miller can be contacted at the R. L. Gould Co., 3711 Lexington Ave. North, St. Paul, Minn. 55112; Phone 612/484-8411.

Green Clippings

CLIP 1: GOLF COURSE SUPERINTENDENT OPENING: Experienced Golf Course Superintendent for private nine-hole course, Rapid City, South Dakota. Salary open. Please send resume to: Mr. Walter Woolard, Chairman, Board of Directors, Rapid City Elks Lodge #1187, RR 2, Box 157, Rapid City, South Dakota 57701.

CLIP 2: Jim Lindblad at the Wayzata Country Club has the following items for sale: 3 Jacobsen Verticuts, 1 Ryan Trap Edger, 1 Jacobsen Trap Edger and 1 Toro Sand Pro. If you are interested, please contact Jim Lindblad at 612/473-8846.

CLIP 3: EMPLOYMENT WANTED: I am seeking employment as a superintendent or an assistant superintendent. I have a BS degree in Turf Management, Business Finance and am working on my Hospitality Management Degree at present. My education has been geared toward total golf facility management. JAMES S. JERDEE, Class B. Superintendent, Route 5, Box 39, Mound, Minnesota 55364.

CLIP 4: Congratulations are in order for two M.G.C.S.A. members who did extraordinarily fine work in preparing their courses for national level tournaments this year. Gerry Bibbey of Keller hosted the L.P.G.A. Patty Berg Classic and Clem McCann of Bunker Hills, Coon Rapids, hosted the U.S.G.A. Public Links Tournament. We have heard nothing but praise about the conditions the players enjoyed while participating in these two fine tournaments.

CLIP 5: A SPECIAL HOLIDAY GREETING TO ALL OF YOU FROM THE STAFF OF HOLE NOTES. We welcome your suggestions for the 1977 editions of HOLE NOTES.

WARREN ANITA TOM

CUSHMAN®



Pargo

GOLF CARS



Johns-Manville

CLUB CAR

NO OTHER ELECTRIC CAN MATCH OUR DRIVE
CALL FOR DEMONSTRATION

SALES • SERVICE • PARTS

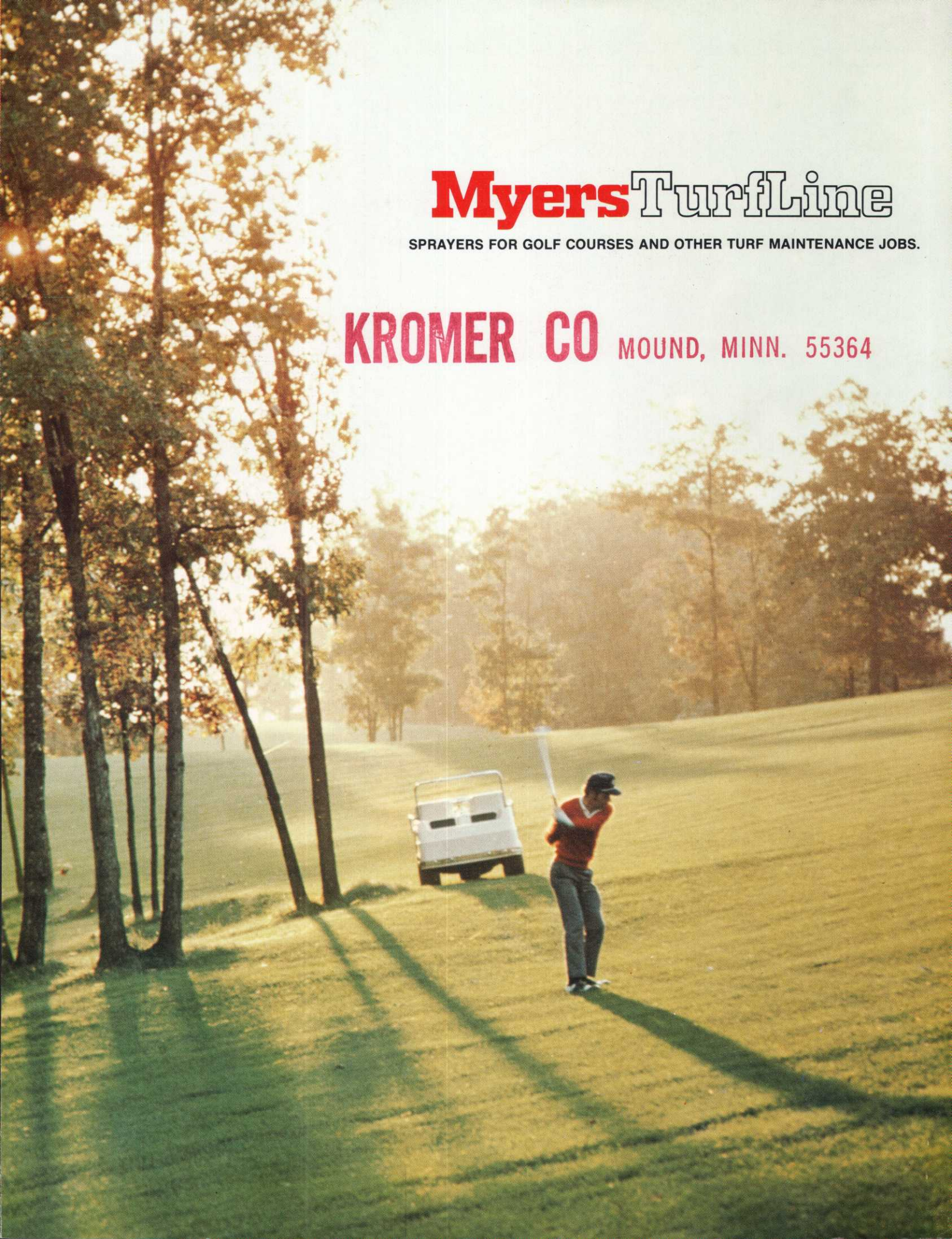
CUSHMAN MOTOR CO., INC.

2909 E. Franklin Avenue • Minneapolis, Mn. 55406
PHONE: 612 • 333-3487

Myers TurfLine

SPRAYERS FOR GOLF COURSES AND OTHER TURF MAINTENANCE JOBS.

KROMER CO MOUND, MINN. 55364



Custom designed sprayers for turf utility carts.



Two models with 100 gallon fiberglass tanks with a choice of 40 GPM–30 PSI or 10 GPM–300 PSI performance range. Optional anchor kits for installation on Cushman Turf-Truckster Chassis frame or in short or long box. Unit can be installed or removed in a matter of minutes. Optional gun for spraying trees and shrubs.

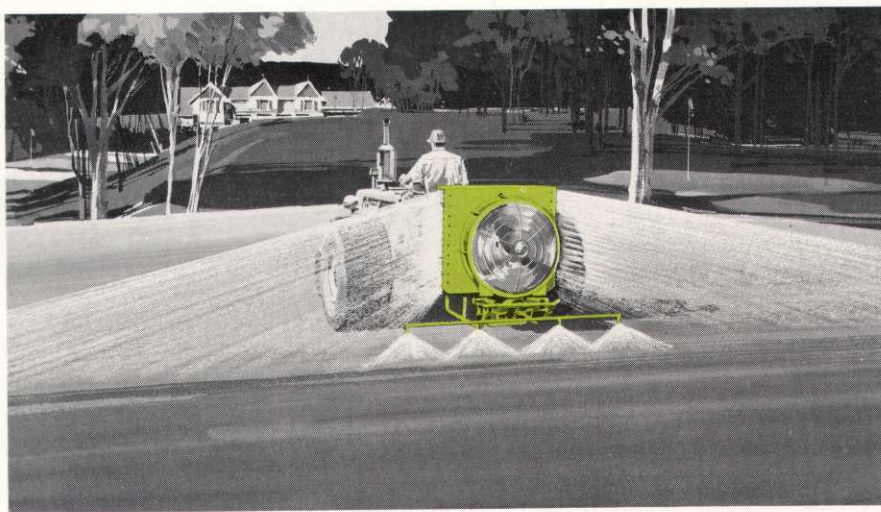


304 stainless steel boom can be easily mounted or removed from sprayer—15' boom has 3 sections with 17 dripless nozzles on 10" centers. Boom wings fold for storage.

Tractor mounted and trailer type fiberglass sprayers.



TL32TMG tractor mounted air sprayer, with PTO drive, is shown with optional P70 tall tree attachment for tree spraying to 70' or more. Basic unit has 100 gallon fiberglass tank with 12 GPM–500 PSI performance capacity. Requires 35 HP at tractor drawbar for rated performance.



TL32TMG tractor mounted air sprayer, with PTO drive, is shown with optional F70 fairway attachment for two way swath to 70' or more. Attachment has adjustable vanes to control spray pattern. Basic unit has 100 gallon fiberglass tank with 12 GPM–500 PSI performance capacity.



Optional TLT Trailer with Terra Tires converts Myers skid cart sprayers to trail behind riding lawn tractors or turf carts. TLT trailer complete with hitch, foot standard and 4 ply 18 x 9.00 x 8 Terra Tires.



Custom designed sprayers with choice of 40 GPM – 30 PSI or 10 GPM – 300 PSI performance range. Optional anchor kits to fit Toro Workmaster, Otis Westcoaster, E-Z-Go Maintenance Machine and other utility carts. Lightweight, easy to install and remove. Optional gun for spraying trees and shrubs.

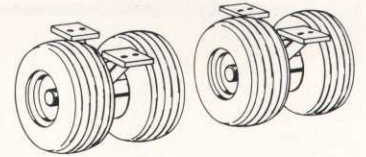


TL12TMG tractor mounted sprayer with economical PTO drive. Basic sprayer has 100 gallon fiberglass tank, 12 GPM – 500 PSI performance range. Optional 21' galvanized boom has 13 Teejet nozzles spaced 20" apart. 6 GPM – 300 PSI model also available.



The VTL10 series sprayers are available for fairway and general turf maintenance in trailer or skid models and feature 200 gallon fiberglass tanks. Pump has 10 GPM – 500 PSI performance range. Powered by 7 HP single cylinder, 4 cycle air cooled engine or PTO drive. Unit pictured shows optional dual wide track running gear with Terra Tires (regularly furnished with wheels for 15" tires).

Optional Equipment Accessories

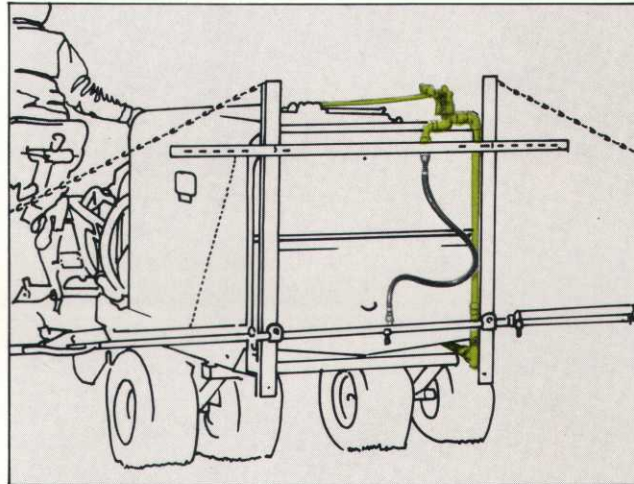


Flotation... Myers offers a large selection of Wheels and Turf Tires for various ground conditions. For 200 & 300 gallon models, especially designed for turf maintenance. Dual wide-track running gear features four Terra Tires to minimize ground compaction, 18 x 9.50 x 8 size. Turf Loading is just 14.1 PSI.

Boom... ETO-21 for trailer models, 21 ft. Turf-weed type ideal for fairway pesticide applications. Built of extra strong galvanized steel tubing with spring loaded break-a-way hinges. Boom wings fold to 7 ft. 8 inch for transporting or storage. 13 TeeJet nozzles spaced 20". Optional nylon diaphragm or brass check valve nozzles eliminate chemical waste, available for field replacement. Boom packaged less nozzle tips.



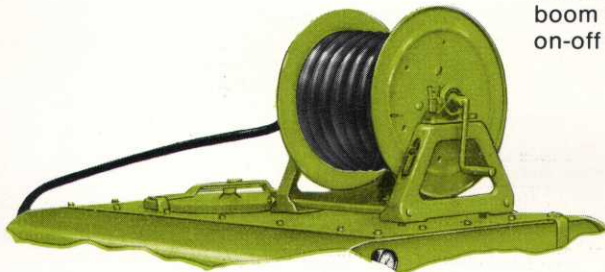
M7 MYERS SELF-PRIMING CENTRIFUGAL PUMP...for use as a Tank Filler. Fills at rate of 125 GPM using a Briggs & Stratton 3 HP air cooled engine.



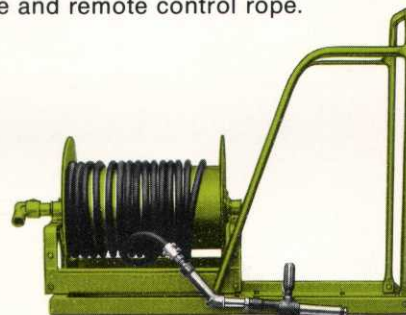
Boom Piping...includes piping to which boom feeder hoses can be attached, ratchet on-off valve and remote control rope.



8-Ply Nylon Tires 11.00-15...High flotation type with a carrying capacity of 5,250 lbs. per set. Just 15 PSI. Turf Loading. See price list for wheel options and tires.



Hose Reel...15033A Optional Price addition includes feeder hose, pump to hose swivel on reel, hand crank. Reel holds 150 ft. 1/2" spray hose...see Section 400 for hose selection. Optional reels shown in price list.



Tree tower provides stable platform for spray operator.



Optional Caster Wheel Jacks

Myers TurfLine

F. E. MYERS CO. DIVISION OF McNEIL CORPORATION
400 ORANGE STREET, ASHLAND, OH 44805

KROMER Co
MOUND, MINN. 55364
(612)472-4167

DATE _____

**WE ARE INTERESTED IN THE
FOLLOWING . . .**

PLEASE QUOTE PRICES

PLEASE SEND ADDITIONAL INFORMATION

PLEASE SHIP AS FOLLOWS:

MAIL

EXPRESS

TRUCK

QUANTITY

ITEM

PRICE

NAME _____

ADDRESS _____

CITY _____

STATE _____ ZIP _____

SIGNATURE _____

FIRST CLASS

PERMIT # 38

MOUND, MINN.

BUSINESS REPLY MAIL

No Postage Stamp Necessary if Mailed in the United States

— Postage will be paid by:

KROMER CO.

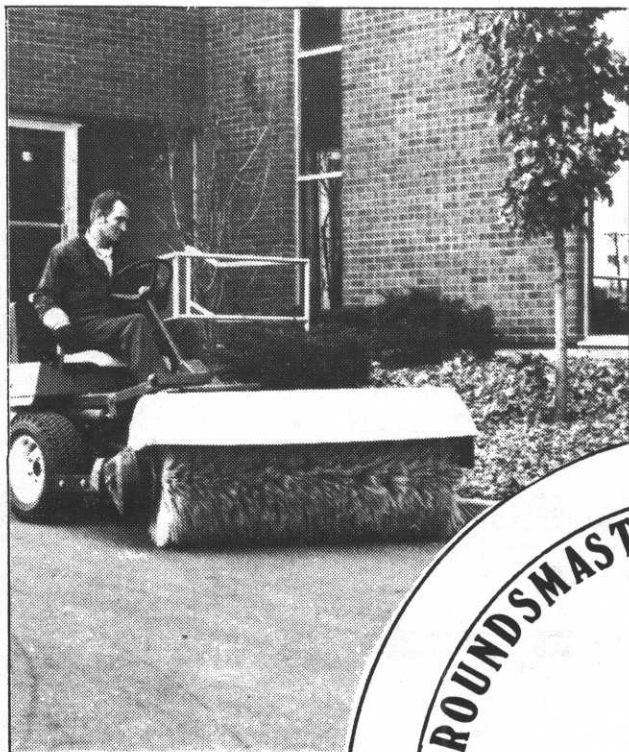
RT. 2 BOX 681A

MOUND, MINN. 55364



GROUNDMASTER 72

IN ACTION



SPRING

SUMMER

FALL

WINTER



MINNESOTA TORO, INC.

14900 21st Avenue North ■ Plymouth, Minnesota 55441

Phone Glenn Rasmussen at (612) 475-2200

