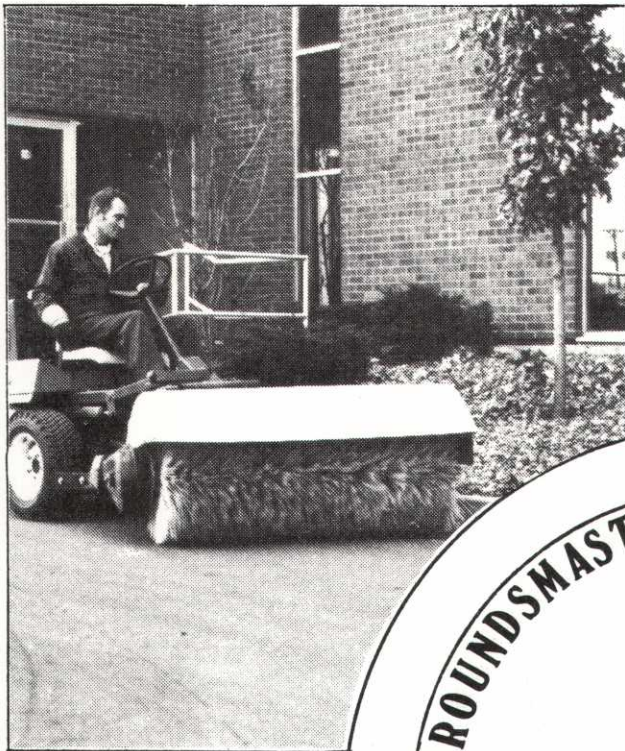


GROUNDMASTER 72

IN ACTION



SPRING

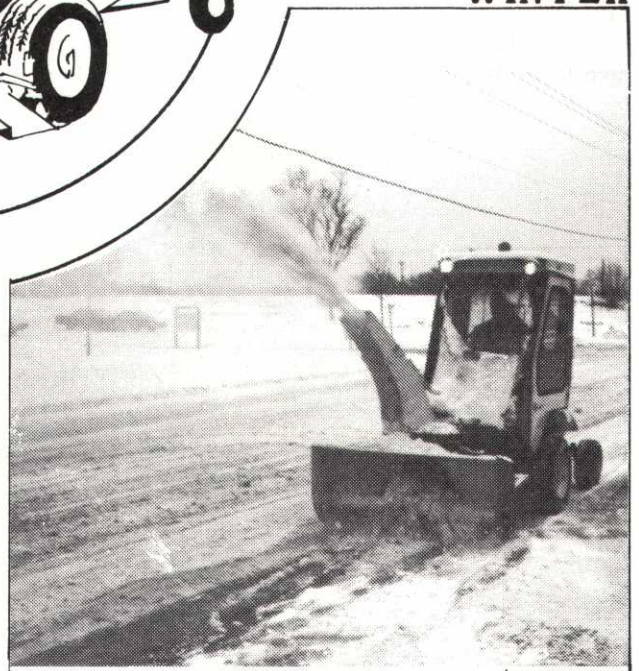


SUMMER

FALL



WINTER



MINNESOTA TORO, INC.

850 South Florida Avenue • Minneapolis, Minnesota 55426
Phone (612) 544-0111 Contact Glenn Rasmussen



ANNUAL GOLF TOURNAMENT

"A DAY TO REMEMBER"

Golf Tournament Chairman Dick Ulrich of Lafayette Club did not overlook a bet on his planning and execution of this year's Interlachen spectacular. The weather could not have been better. Dean Sime, Superintendent of Interlachen, had the course as well groomed as a New York model. While all entries could not be accommodated, those lucky foresighted superintendents who did get tee times will not forget the pleasure of hosting their club presidents, greens chairman and golf professionals in such great surroundings. Not to be outdone by the superb course, Club Manager David Steward presented a fine hors d'oeuvre table and an excellent dinner featuring pheasant as the main course.

To cap all of this, the properly appreciative dinner audience was treated to two main speakers. Mr. Conrad "Connie" Scheetz, Executive Director of the Golf Course Superintendents Association of America, spoke on the "Other Side of Golf". This was a thoughtful soul searching talk that pointed out that while golf appears to be a healthy growing sport on the surface, the other side of the coin shows a picture that could cause concern. Individual golf courses and their personnel should work through associations on a state and national level to recognize their oncoming problems and seek solutions to them before the effect is felt on the game itself.

Mr. Herb Brooks, hockey coach at the University of Minnesota, presented a change of pace with a pleasing and well informed talk on the current status of the NCAA investigation at the University. He explained his thoughts on collegiate hockey as well as his recruitment ideas concerning American vs Canadian hockey players. All in all it was a very fine program and enthusiastically received by the large dinner audience.

The golf tournament winners in the various categories, and there are a lot of them, are pictured in another area of this publication.



LARRY VETTER, LEFT, TIED LOW GROSS SUPER WITH PLAYING COMPANIONS, CUYLER ADAMS, JIM SEIDEL AND PRO BOB REITH, SR. OF MINIKAHDA.



RANDY NELSON, RIGHT, TIED LOW GROSS SUPER WITH HIS FOURSOME, FRED HEISKE, H. A. THOMPSON AND FRANK LEWIS OF OWATONNA C.C.

1975 RESEARCH PROGRAM REPORT

DEPARTMENT OF PLANT PATHOLOGY
UNIVERSITY OF MINNESOTA
ST. PAUL, MINNESOTA 55108

EVALUATION OF SNOW MOLD FUNGICIDES-'75

WARD C. STIENSTRA*

Snow mold in Minnesota is truly a complex problem. While snow mold is often classed as gray or pink, we now know that two species of *Typhula* are definitely present in the entire state and *Sclerotinia borealis* in the northern sections as well as previous report of *Fusarium nivale*. The *Typhula* species are LST-*Typhula incarnata* (itoana) and SST *Typhula ishikariensis*.

The testing of standard and experimental compounds at the St. Paul location and in test plots throughout the state was begun in cooperation with the Minnesota Golf Course Superintendents Association as mercury compounds may be placed on the restricted list and thus be unavailable for snow mold disease control. Also, information on the performance of presently available alternate fungicides under Minnesota conditions was desired by the Minnesota Golf Course Superintendents Association.

Appreciation is expressed to the Department of Horticulture for maintenance of the St. Paul plot and those Superintendents who have provided test plot areas. The following companies have also assisted this research effort: W. A. Cleary Corporation, E. I. duPont de Nemours and Co., Inc., *Associate Professor & Extension Specialist Turf Pathology, Mallinckrodt Chemical Works, Rhodia Chemical Company and The Upjohn Company.

Appreciation is also expressed to the Minnesota Golf Course Superintendents Association for its continued support and encouragement in these projects. Alexandria, Joe Smith; Bemidji, Jeff Buettner; Duluth, Eino Maki; Mendota, Jerry Murphy; Redwood Falls, Quentin Castle; Rochester, Kurt Erdmann; Roseau, Lloyd Rice; St. Paul Campus, Ward Stienstra.

TABLE: SNOW MOLD - FUNGICIDES EVALUATION - '75

	Duluth		Bemidji		Rochester	Mendota	X of Greens
	Green 1 Rep	30	Fairway 3 Reps	24	43	5 (5)	
Check (Range)	29 (5-60)	30	24 (10-50)	43	5 (5)	27	
Tersan SP+PCNB 4oz+4oz	99	100	80	100	97	99	
Tersan SP+Caloclor 4oz+3oz	95	99	93	100	99	98	
Caloclor+PCNB 3oz+4oz	94	100	96	100	98	98	
Tersan SP+Thiram 4oz+4oz	93	100	57	99	95	97	
Caloclor 5oz (D)	85	90	87	100	100	94	
Tersan SP 4oz	93	100	43	100	83	94 Percent	
Tersan SP 9oz	98	99	42	100	78	94 Disease	
Tersan SP 6oz	95	100	63	99	78	93 Control	
PCNB 8oz	90	100	75	93	79	91	
Tersan SP+Fungo 4oz+2oz	95	99	78	100	65	90	
MF 582 12oz	90	99	73	96	73	90	

	Duluth	Bemidji Green 1 Rep	Fairway 3 Reps	Rochester	Mendota	X of Greens
PCNB+Thiram 4oz+4oz	68	100	78	97	91	89
MF 582 6oz	83	99	53	99	70	88
MF 582 9oz	92	99	67	89	73	88
Cleary 4222 8lbs	78	95	65	100	79	88
MF 594 5lbs	64	95	67	83	30	85
PCNB 4oz	78	98	47	92	68	84
Actidione RZ 8oz	88	99	93	91	45	81
PCNB+Fungo 4oz+2oz	82	98	73	95	45	80
Actidione RZ 4oz	85	100	87	91	45	80
MF 594 10lbs	71	98	72	93	56	80
Caloclor 3oz (D)	75	50	83	98	94	79
Cadminate 4oz	58	90	63	83	80	78Percent
Caloclor+Thiram 3oz+4oz (A)	61	80	73	91	81	78Disease
RP 26019 4oz	43	80	37	100	83	77Control
RP 26019 8oz	63	60	53	100	80	76
Calogran 8lbs	74	30	83	100	100	76
MF 594 7lbs	64	75	57	92	58	72
Thiram 8oz	46	50	20	95	75	67
Caloclor+Fungo 3oz+2oz (A)	50	40	82	98	68	64
Cadminate 6oz	34	80	67	--(C)	--(C)	57
Tersan 1991 2oz	14	70	38	74	20	45
Thiram 4oz	23	60	53	64	25	43
Fungo 2oz	21	30	37	71	0	31

- A. Mercury not compatible with thiram or Fungo.
- B. Snow mold was irregular and some plots may reflect lack of disease.
- C. No treatment applied.
- D. Two-5 mm tip burn.

Snow mold disease at Alexandria, Redwood Falls and St. Paul Campus was too light to report the results. The snow mold plot at Roseau was damaged by fertilizer phytotoxicity and disease observation was masked.

SUMMARY OF SNOW MOLDS 1974-75

Snow mold pressure was so light at Alexandria, Redwood Falls and the St. Paul campus that no significant disease readings were made. The plot at Roseau was severely damaged by snow mold but excessive fertilizer burn prevented meaningful data acquisition. In general, most materials performed at Roseau as they did at the Duluth plot, however, the level of control was less. Snow mold pressure was lightest at Rochester, nearly the same at Duluth and Bemidji and most uniformly damaging at Mendota. In any case, disease damage ran from 95% to 71% much of which lasted through June.

It's important to note that Caloclor and Tersan SP do not control Sclerotinia borealis while PCNB (pentachloronitrobenzene) does. Cadminate appears to control Sclerotinia borealis better than Caloclor, however, does not control Typhula sp. as well. The systemics Tersan 1991 and Fungo also appear to check Sclerotinia borealis but are overrun by Typhula sp. Control of Sclerotinia borealis by systemics is not very significant as it appears that Typhula sp. simply out-compete Sclerotinia borealis.

Mixing of Caloclor with Fungo or thiram is not recommended as the mercury of Caloclor and the sulfur of Fungo and thiram react chemically in the spray tank reducing

effectiveness. Mixing Tersan SP with PCNB or Tersan SP with Caloclor or Caloclor with PCNB did improve disease control at most locations.

Increasing concentrations of PCNB (see Actidione RZ and MF582) did not increase disease control. Thus, it appears that 4 ounces of PCNB and maybe less provide all the disease control that material can give. It also appears that PCNB is partially effective against LST but not SST. Tersan SP performed well at Duluth and Rochester but again provided only 80% control at Mendota and even poorer control on the fairway turf at Bemidji. The overall average of Tersan SP was similar to 5 ounces of Caloclor, certainly a good showing. Tersan SP does not produce tip burn. In general LST, Typhula incarnata is present all over the state while SST, Typhula ishikariensis is more common as you go north from Rochester and Sclerotinia borealis is most common north of the Twin Cities to the Canadian border. LST is relatively easy to control while SST was present and not controlled in the plots treated with Caloclor (3 ounce rate only) Cadminate and Tersan SP and PCNB.

The Minnesota Golf Course Superintendent should think back to the paper presented at our last annual meeting and then look at the top treatments in the table. The snow mold problem in Minnesota is a complex of low temperature organisms, not one or two. Second, no single material performed as well as the combination of two of these three materials: Caloclor 3oz, PCNB 4oz and Tersan SP 4oz. Third, each one should examine his turf areas testing these materials where he can (nursery, practice green) and observe the results and what organisms are present.



Attention!

KROMER CO IS NOW AN AUTHORIZED
KOHLER ENGINE SERVICE DEALER!

We have the latest reel and bed knife grinders for all your
service needs.

GREENSMOWERS - AERIATORS - SPRAYERS - TRUCKSTERS - VACUUMS - SPIKERS
GANGMOWERS - TRACTORS

KROMER CO : MOUND, MINNESOTA 55364

TELEPHONE 612-472-4167

HAPPY WINNERS MGCSA TOURNAMENT



JOHN GRANDHOLT, LEFT, LOW NET SUPER WITH PLAYING PARTNERS, JIM IHNOT, GOLF PRO, JERRY RASMUSSEN AND JOHN RASSMUSSEN OF ALBERT LEA.



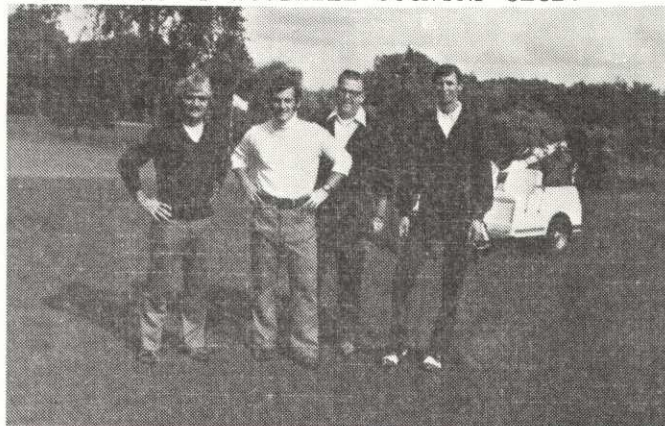
LARRY JOHNSON, LEFT, LOW NET GREENS CHAIRMAN WITH PLAYING COMPANIONS BILL KIDD, GOLF PRO, ED SIVRIGHT, CLUB PRESIDENT AND DEAN SIME OF INTERLACHEN C.C.



LOW PRO PHIL REITH, 3RD FROM LEFT AND LOW NET SENIOR DICK RYSHAVY, 2ND FROM LEFT WITH CARL ANDERSON AND GEORGE JENNRICH OF WOODHILL COUNTRY CLUB.



FRANK COX, LOW NET CLUB OFFICIAL, RIGHT WITH ART NELSON, BILL WARYAN AND JOHN FULLER OF MIDLAND HILLS COUNTRY CLUB.



ROY PAULSON, LOW NET ASSISTANT, RIGHT WITH DICK DESPLINTER AND JIM CORBETT, JR. AND JIM CORBETT, SR. OF NEW HOPE.



ORRIN EIDSMOE, LOW NET ASSOCIATE, RIGHT WITH CLEM MCCANN, TOM POMMIER AND GORDY MILLER OF COON RAPIDS.

GREEN CLIPPINGS

CLIP 1: By action of the Ramsey County Recreation Department on April 9, 1975 Merle Morelan was appointed superintendent at Goodrich Golf Course and Gerold Bibby was appointed superintendent at Keller Golf Course.

CLIP 2: Little Falls Country is currently taking applications for a superintendent-club manager position. Interested persons should contact Jim Nitchals, City Administrator, Little Falls, Minnesota.

CLIP 3: Jon Heimsness, Moorhead Country Club, Box 255, Moorhead, Minn. 56560, has a Brillion Seeder for sale - Model 551 F - 96T. This unit is two years old and has had limited use. Interested persons may contact Jon at 218/233-3831.

CLIP 4: Agriculture Department scientists say that elm trees, which once thrived in the eastern half of the nation, soon may be making a comeback after being nearly wiped out by Dutch elm disease.

A new hybrid tree, called an "urban elm," will be available in about three years, said the department's Agricultural Research Service. It is resistant to Dutch elm disease, which has spread through the American elm's natural range since the 1930s, the agency said.

Development of the urban elm has been going since 1956 at USDA's shade tree and ornamental plants laboratory in Delaware, Ohio, using parent stock from a Netherlands elm and a Siberian elm.

Scientists said the new hybrid "grows fast in various soil types, has dark green foliage and is tolerant to drought, pollution, soil compaction and restricted root space." That makes it particularly suited for cities, they said.

CLIP 5: Vern Hanson who is now with the Park District of the City of Fargo reports that life in Fargo has been anything but dull. The following quotes from his recent letter: "Mother Nature has delivered us two floods, a tornado, and an earthquake since I arrived here. The second flood the end of June just about completely finished golfing here in the Red River Valley. The two golf courses that I am superintendent at, Edgewood Golf Course and our 9 Hole Par 3 El Zagal, were both completely flooded with up to 17 feet of water covering the courses for about three weeks. All the grass was dead after the flood. On the two golf courses, we lost a total of 20 greens, 31 tee stands, 27 fairways and most of the rough. Needless to say, we are in the middle of a massive re-seeding program with the hope of opening next spring. We are also starting the construction of a new 9 hole executive course this fall."

CLIP 6: James M. Latham, Jr., Chief Field Agronomist, Turf Service Bureau for the Sewerage Commission of the City of Milwaukee, announces the Tenth Annual Wisconsin Golf Turf Symposium at the Pfister Hotel, Milwaukee on October 29 & 30, 1975. Registration fee is tentatively set at \$20.00 which includes cocktails and lunch on Wednesday. The program, "A New Deal For An Old Course", features top national experts. To register contact Mr. Latham at Milorganite Division, P.O. Box 160, Oak Creek, Wisconsin 53154. Telephone 414/764-2300.

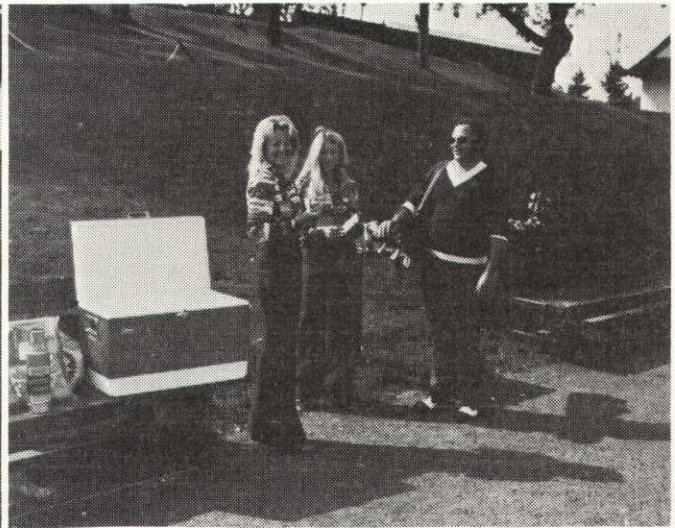
CLIP 7: Mr. Scott Hoffman, Golf Course Superintendent at Mitchell Country Club, Mitchell, South Dakota, has been appointed the new superintendent at the Madden Resort at Brainerd, Minnesota reported Jim Madden, President and General Manager. The resort has just opened its second nine on the new course called Pine Beach West.

The complex now has two full 18-Hole courses and one short nine. Ralph Miles who has been with the Madden Resort since 1932 will serve in an advisory capacity. Actually, Ralph helped build the first course starting in 1925. A 50th year party is being planned.

CLIP 8: Our most hearty thanks to Joe Garski and Bob Gerding of Par Aide Products Company for their contribution of \$350.00 to our Research Fund. Ditto to the Minnesota Golf Association for its contribution of \$500.00.



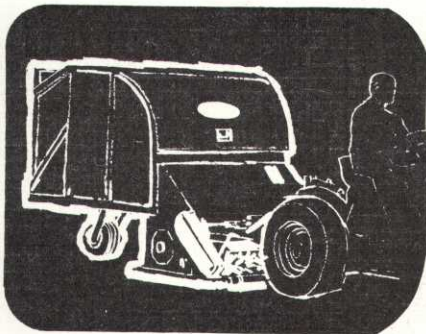
ARNIE BODHAINE, HIGH GREENS SUPER, 2ND FROM LEFT WITH OTHER BLOOMINGTON PLAYERS, BOB JANKOWSKI, JOE MCMAHON AND LLOYD VAN SICKLE.



RICH RANNELLS, PRESIDENT OF MGCSA, DIDN'T WIN ANYTHING EXCEPT THE SMILES OF TWO RAFFLE TICKET MERCHANTS TO WHOM MOST PARTICIPANTS COULD NOT SAY NO.

CLEAN UP PROBLEMS THIS FALL ?

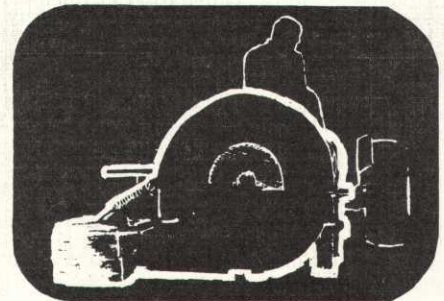
**PULL BEHIND
SWEEPER**



**SELF PROPELLED
SWEEPER**



BLOWER



LEAVES • GRASS CLIPPINGS • TWIGS • ROCKS • CANS • BOTTLES • PAPER

JACOBSEN - ROGERS

HAS THE ANSWER !

LET **GOULD'S**
LAWN GARDEN AND TURF
SUPPLIES AND EQUIPMENT

DEMONSTRATE A SWEEPER OR BLOWER THIS FALL

3711 Lexington Ave. No. St. Paul, Minn. 55112 (612) 484-8411

TORO HOSTS FIELD DAY AT OAKRIDGE COUNTRY CLUB

An interested crowd of Golf Course Superintendents attended two demonstrations of Toro aerating equipment on the tenth fairway at the Oak Ridge Country Club on September 2. The superintendents observed and operated the latest in technical advances in the aerification of greens, tees and fairways.



MILT WILEY OF TORO AND KEITH SCOTT, SUPERINTENDENT OF OAK RIDGE C.C. EXAMINE DEPTH OF TINE ON R&R DEEP-TINE AERATOR.



GLENN RASMUSSEN, GENERAL MANAGER AND VICE-PRESIDENT OF TURF PRODUCTS DIVISION OF MINN. TORO, OPERATING A DEDO AERIFIER MOUNTED ON A 72" TORO GROUNDS MASTER POWER UNIT.

LAKE CITY COUNTRY CLUB HIT BY TORNADO

Lake City Country Club was struck by a vicious tornado on August 21 that inflicted extensive damage to both the course and the buildings. Seventy trees were completely leveled and about fifteen more will have to be cut down. One cart storage building was demolished and its neighboring storage building lost its roof. The clubhouse sustained more minor damage. The course was closed for six days. At no charge Minnesota Toro, Inc. loaned several power saws and a Workmaster Utility Vehicle to aid in the clean up operations. Photos showing the extent of the damage below are courtesy of Glenn Rasmussen.

