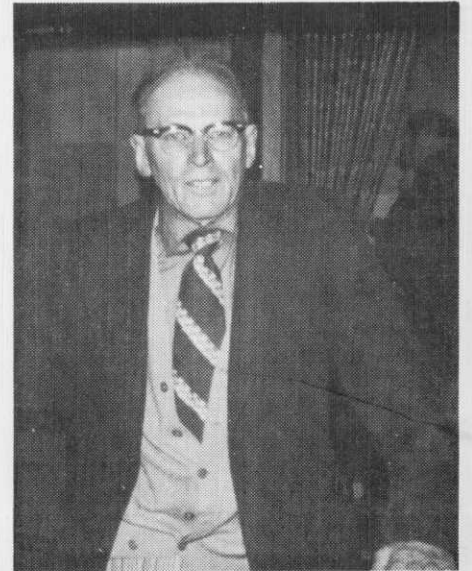


in recognition OF ONE OF THE REAL VETERANS OF THE MGCSA
SUPERINTENDENT IRV FULLER, MANKATO COUNTRY CLUB

It was the year 1932 when Irv was looking for work to fill a stopgap, due to a depression, in his line, road construction. He heard of a job at the Mankato Country Club and applied for the job and got it. It did not take him long to realize that this was the kind of work he wanted. It was out in the open air, working with nature and with people and he has been at it ever since.

Irv worked under the supervision of Del Ash the then Greenkeeper (as they were known in those days) and Del took an interest in Irv and encouraged him to stay on as he, Del, was nearing retirement age and thought Irv would be a good man to replace him. Del did retire in a couple of years and Irv worked one more year as an assistant under the Professional John MacRae and in the year 1935 Irv was named Superintendent and has been that ever since.



Irv Fuller

He quickly realized that there was much more to being a superintendent than just cutting grass and he began preparing himself to handle the job in the years to come. Some of the things he did was to attend night school in classes of mathematics at the Mankato High School; participate in seminars and workshops whenever they were available; visit other courses and superintendents to learn how they were run and how other superintendents carried out their plans; subscribed to turf magazines, read them thoroughly and studied the articles to gain any knowledge he could from them; spent many hours in the library studying books and articles on drafting and surveying. By 1936 Irv was sure that the position of Golf Course Superintendent was going to be his lifetime vocation. That was the year Harold Stodola, Superintendent at the Mendota Country Club was President of the MGCSA and Irv joined the Association and has been an active member ever since. He is proud to be the possessor of a GCSAA 25-year pin and a 30-year MGCSA Plaque.

There have been many changes in the work and responsibilities of a Golf Course Superintendent during the 42 years Irv has been in that profession. The greatest change is probably in the equipment. When he started most all



Snow removal in the 30s



Irv found time to play golf in 1931



This is how the greens were cut in 1931

of the work was done manually. Green mowers were pushed by hand and snow removal meant using a shovel. Now grass is cut by a power mower with the operator riding; snow removal and sanding is done with power equipment with the operator sitting in heated cabs.

There is so much more needed today to maintain a golf course than there was in the 30s. At that time it required only the superintendent and two men to do the job. Today it requires a large staff to keep the course in playing condition, for example, Irv has nine men, two of whom make up the night shift. Golf has become such a big business it requires much more money on upkeep. There is a constant developing program going on at all courses. There is rebuilding and re-designing of tees, greens, fairways and yes, even rough, maintaining a complete grass nursery, tree nursery, etc.

There are still some people ask the question what do the superintendents do besides cut grass. To them we say just look around and see what improvements have been made on your course. As a matter of fact the superintendent must be a man capable of keeping the course in the best playing condition; he must be a businessman, capable of hiring and getting the most out of his help; budgeting his program so as to have proper equip-

ment and material at the most economical cost to the club.

The superintendent is involved in so many areas of work that today young men going into this profession should, if possible, have a college degree particularly in Turf Management. Irv says that he is sure the older men could qualify for some of these degrees but they earned this knowledge through personal experience, hard work and dedication to their job.

Irv is very proud of the fact that several of the men that started their career at the Mankato Country Club under his supervision have gone on to successful careers on their own at other courses. These include his brother John, at Midland Hills Country Club, St. Paul; George Gibbons, Jackson Golf Club, Jackson, Minnesota; Dennis Schoenfelt, Root River Country Club, Spring Valley, Minn. Irv has stayed at the same course on which he started. During these years he has seen the facilities expand to an 18 hole course, a swimming pool added and just recently a beautiful new club house. He has always enjoyed his work; the pleasant relationship he has had with the members. In 1972 (his fortieth year) in appreciation for his fine work at the club, the members played host to Irv and his wife to a vacation to Hawaii. They had a wonderful vacation and it was greatly appreciated by Irv and his wife.

He has always tried to contribute his best efforts to the improvement of the Mankato course and is proud of its condition today. Irv has, since joining the MGCSA been a very active member, having served as its President for one year and on the Board of Directors for fifteen years. He feels the Association has done a great deal in developing the superintendents' profession and recommends that every superintendent and assistant superintendent be an active member. Superintending a golf course has given him a satisfying and fulfilling life. If the years ahead are as good as the year past he will be able to say truthfully that he certainly made no mistake in choosing this profession for a career.

greens' CLIPPINGS

NOTICE

There are several members that have not paid their 1974 dues. This is important. Do not lose sight of the fact that you are a member of a non-profit organization and that the bylaws require that the annual dues be paid by April 1 of each year. The Board of Directors are overlooking this for this year and will not suspend a member if the dues are received by June 1, 1974.

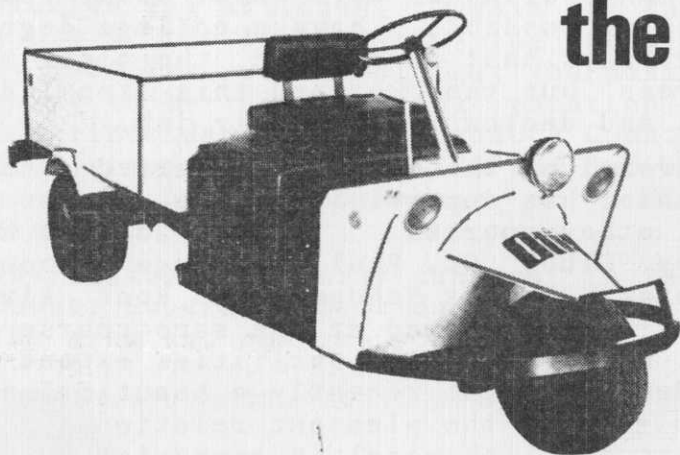
In the event that a member is suspended the bylaws require the suspended member to make application for reinstatement and the Board will consider the application in the same manner they do a new member. SO PLEASE GET YOUR CHECK IN THE MAIL TODAY.

Received a nice note from Art Olson, a life member, thanking us for "Hole Notes" and telling us that he is leaving Mesa, Arizona, and returning to good old Minnesota. Nothing like four-seasons Minnesota, is there, Art? Art's new address is Route 2, Glenwood, Minnesota, 56334. I am sure he would like to hear from some of his old friends. We hope that when he gets settled he will make arrangements to attend one of our meetings.

Just another reminder - the May meeting is at Indian Hills, May 6th, the first Monday in May instead of the second, and it will be the first meeting this year where we can get in some golf. See the article on the May meeting for directions to the course.

It is beginning to look like we will not have space of any kind for a lengthy item on the research program in this issue, but that does not mean it is not still a very important function of the MGCSA. Remember, Dr. Stienstra will talk on that subject at the coming meeting.

(continued on page 10)



the Otis Turf-aul

Rugged, Dependable and Economical...

*a versatile, all-weather vehicle to carry heavy loads
and perform a variety of jobs*

EASY RIDE
*Coil spring suspension
Oversize turf tires*

SAFETY
Hydraulic brakes on all wheels



for a demonstration call:

KROMER CO

RTE 2, BOX 681A • MOUND, MINNESOTA 55364

PHONE 612-472-4167

trees AND A GOLF COURSE

by Leslie Todd

Trees can be both an asset and a liability to a golf course. An asset from a beautification standpoint and a liability from roots, leaves, broken branches etc. Therefore, great care should be taken as to where, when and the kind of a tree or trees are planted.

It is a shame to think it took the "Dutch Elm" problem to get people to trim the oaks. I have used this phrase many times, more as a figure of speech than anything else, however, I honestly believe there is a lot of truth in it.

On the golf course we will find people more critical of grass than trees and we believe it should be the complete golf course. Superintendents are continually striving for better grass and turf, whereas we tree men are trying to enhance the beauty and use of trees.

I work on a theory with trees (the same as the superintendent does with grass and many do not realize it), the theory being that a tree should be treated the same as a person; treat the tree according to the symptoms of its problems. A tree feels, it breathes, it gives great beauty but it still needs help the same as you and I. The difference being, we can go to a doctor, a tree just stands there waiting for help and in most cases the only help the trees get is from mother nature and without her the trees would not be on earth. However, we can still give mother nature help.

The most practical thing to do is to sit down and plan a program just as you do with your grass. Included should be the kind of trees you want, the purpose and, of course, the location. After they have been planted give them the care they deserve to get the most out of them and to minimize the cost as the cost is much less to maintain than to repair or replace.

SOME SUGGESTED WAYS TO PROPERLY MAINTAIN A TREE

1. The first and most important thing is a good sanitation program, such as trimming as needed; trim for health as this is just as important if not more so than to trim for beauty.
2. Spraying is very important and it becomes more important as we learn more about tree problems. This again compares with the care you give turf.
3. When transplanting, variety, location, soil condition, water supply and many other considerations must be taken into account.

What this all boils down to is, work with your trees and they will work with you.

(continued on page 11)

BERGERSON-CASWELL, INC.

WELL & PUMP REPAIR - MAINTENANCE
WELL PHOTOGRAPHY

13120 Wayzata Boulevard
Minnetonka, Minnesota 55343
PHONE: (612) 545-8834

BROADLEAF WEEDS controlled positively

with maximum safety
to sensitive grasses
and ornamentals



trimec

TURF HERBICIDES®

U.S. Patent
3,284,186

THE MOST CONTROL AT THE LEAST EXPENSE

TURF SUPPLY COMPANY

2970 Dodd Road, St. Paul, Minn. 55121 • 612-454-3101

Cushman® Turf Care System cuts equipment costs 35%, labor costs 50%.

TURF-TRUCKSTER, with power take off, provides on-course transportation for workmen and powers all these hard working Cushman accessories. No need to buy separately powered equipment or maintain it.



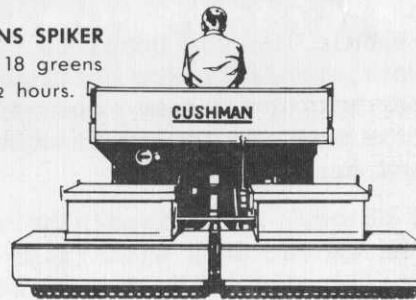
TOP DRESSER

Moving table and brush.



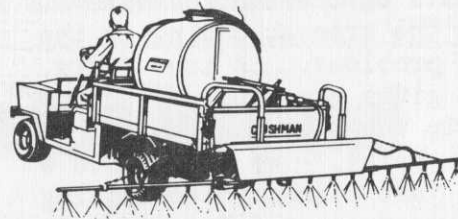
GREENS SPIKER

Spike 18 greens in 2½ hours.



CYCLONE SPREADER

Spread up to 40' swath.

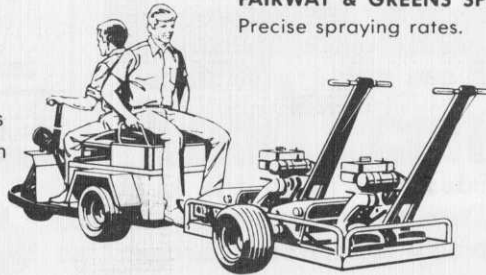


FAIRWAY & GREENS SPRAYER

Precise spraying rates.

8 HP MINUTE-MISER

Perfect transportation for supervisors plus power to spare to pull Cushman low-bed trailer or ball pickers. Find out more. Call



SALES • SERVICE • PARTS

CUSHMAN MOTOR CO., INC.

"Our Twenty-Fifth Year"

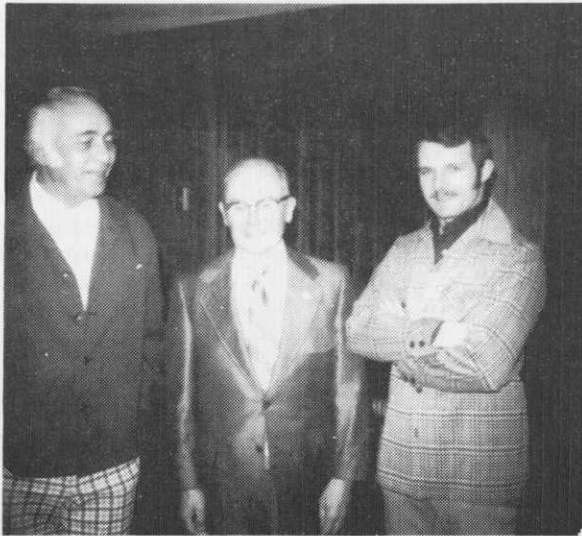
2909 E. FRANKLIN AVENUE

MINNEAPOLIS, MINNESOTA 55406

PHONE: (612) 333-3487

Jerry Commers

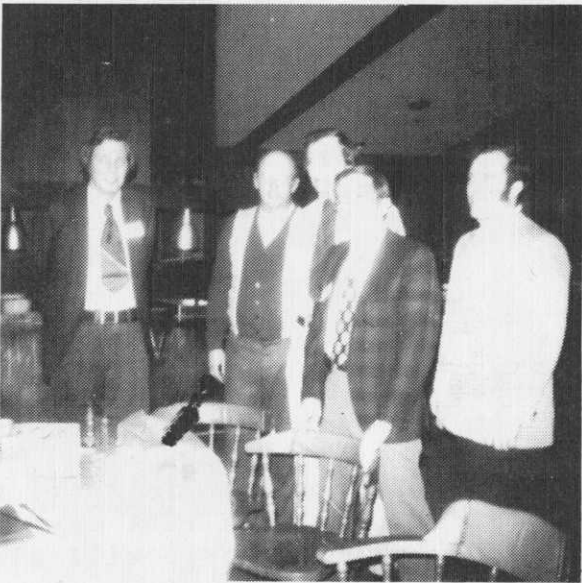
Bill Lancette



THESE PICTURES TAKEN



AT THE APRIL MEETING



AT MAJESTIC OAKS COUNTRY CLUB



april MEETING

The April meeting was held at the Majestic Oaks Country Club, Coon Rapids, Minnesota, Monday, April 8th. The regular meeting was preceded by a Board Meeting at the same location. The Board had a very delightful lunch and Ove Bjornson and Pete Kalina were hosts to the lunch. The Officers and Board Members are very grateful to these two Gentlemen.

Weather did not permit playing golf but the members enjoyed the afternoon by playing cards and some good old-fashioned visiting. It had been planned to play some golf but we had one of our biggest snowstorms April 3rd, the preceding Wednesday and that took care of the golf games.

After an afternoon of enjoyment and a social hour the members sat down to an outstanding dinner prepared by Chef Pete Kalina; there were 56 at dinner.

The dinner was followed by a business meeting presided over by President, Larry Vetter. Included in the business was the acceptance of two new Class B members - Mark Smith of the Marshall Golf Club, Marshall, Minnesota and Richard Dicks, Oak Ridge Country Club, Hopkins, Minn. Tom Brown, a part time employee at Mendakota was awarded a GCSAA Scholarship Plaque. Another item of business was the subject of displays at the monthly meetings by Associate members. It was agreed that Associate members would be permitted to display their products at these monthly meetings. They would be assigned dates and locations in advance and no two would be permitted to display products that are competitive. President Vetter expressed the sincere thanks and gratitude of the Association to Host Don Lindblad, Manager Bjornson and Chef Kalina for their fine hospitality and dinner.



Host Don Lindblad

may MEETING

● It is important that all members remember that the May Meeting, Monday, May 6 is the first Monday in May and not the second, which is the usual date for the monthly meeting.

● The meeting will be at Indian Hills Country Club and there will be golf for all that wish to play. In fact, the course is closed that day except for the members of MGCSA. Carts will be available. There will also be the usual entertainment for those that do not play golf.

● We have one request. As soon as you arrive at the Club, please register for dinner. There will be someone assigned to take these registrations and it is important that this registration be done so that the management can prepare the dinner which will be prime ribs with all the trimmings for \$6.25, covering everything.

● Dr. Ward Steinstra, Department of Plant Pathology, University of Minnesota, will talk on the progress of the research program and this is a subject that we should all be very much interested in.

● To get to Indian Hills take Hwy 36 to 3 miles East of Hwy 694. On the left-hand side of Hwy 36 is a store named the "Farm Service Store." Turn left off of Hwy 36 at that point to the Club.

schedule OF MEETINGS FOR THE BALANCE OF THE YEAR

June 10	- Cloquet Picnic (Bring the Ladies)	Sept. 16	- Rolling Green Annual Tournament
July	- Open	Oct. 14	- Monticello CC
Aug. 12	- Owatonna Municipal GC	Nov.	- Open
	December 4-5-6	- Annual Meeting and Turf Conference Normandy Hotel at Minneapolis	

The turf-care professionals.

Professional turf-care managers know the value of owning precision-built turf-care equipment.

Ryan equipment is made for those professionals. For those who insist on machines that perform efficiently; with a minimum of maintenance and a maximum service life.

If you'd like more information on any of these professional turf machines, send for your new, free, full-color catalog.

- ① **GREENSAIRE II***. Second generation of the Ryan coring aerator. Removes cores on 2" centers down to 3" depth.
- ② **CORE PROCESSOR***. Attaches to Greensaire II. Processes cores, picks up plant material and returns soil to green.
- ③ **SPIKEAIRE***. Disc spiker for aeration.

④ **MATAWAY***. Heavy-duty power rake, deep slicer and disc spiker.

⑤ **REN-O-THIN***. Removes thatch, grooves for seed, pulverizes aeration cores.

⑥ **TURF MINUTE-MISER***. Personnel transportation and towing ball pickers, Greensweep, utility trailer.

⑦ **GREENSWEEP***. Picks up cores, thatch, debris from greens, turf and pavement.

⑧ **SPREAD-RITE***. Top dresser, fertilizer spreader. Handles sand, too.

⑨ **TRACAIRE**. Three-point hitch turf aerator. Choice of 9 or 12 wheels.

⑩ **RENOVAIRE**. Contour design turf aerator. Interchangeable tines for coring, slicing, open spoon aerating.

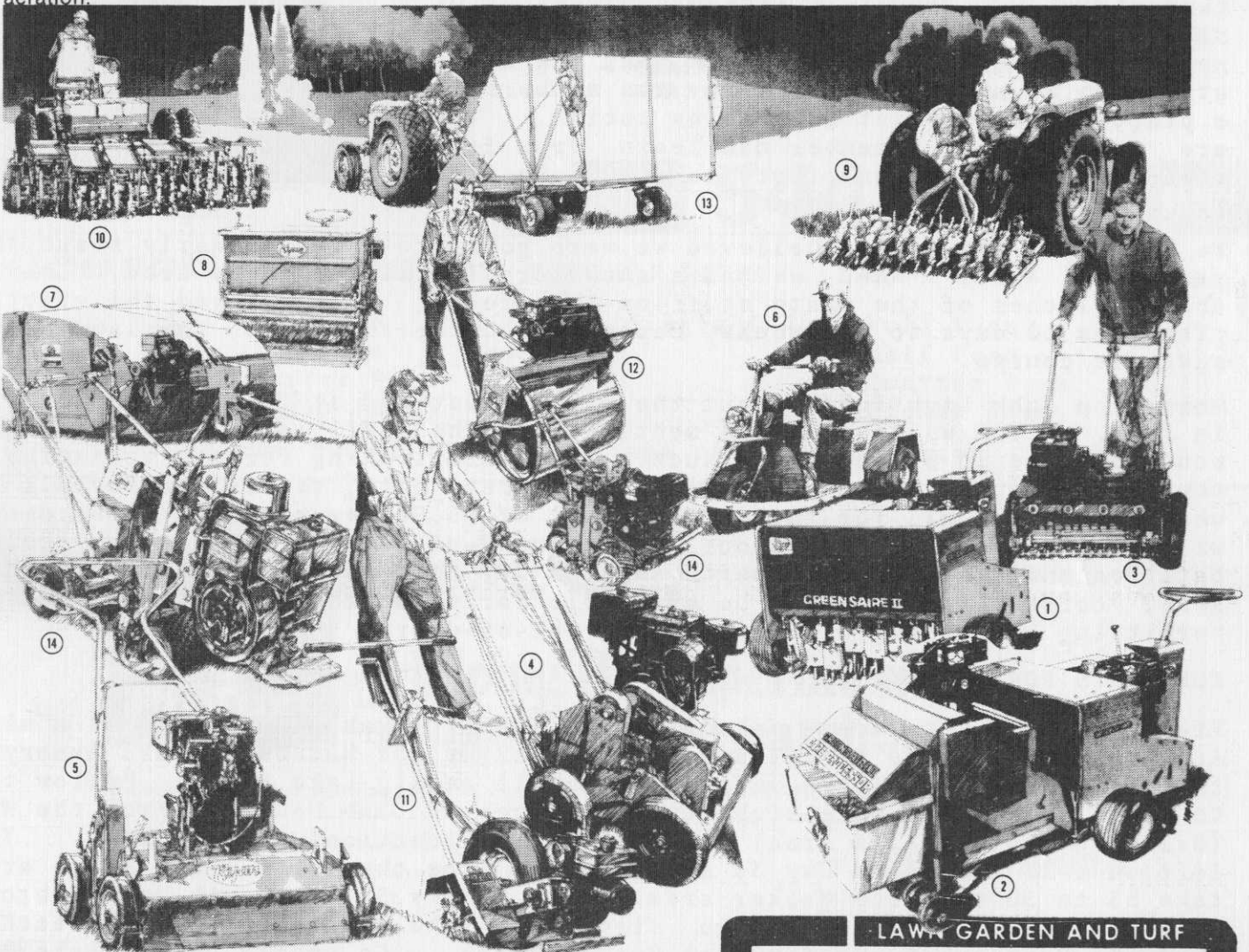
⑪ **PRO-EDGE***. Professional edger.

⑫ **ROLLAIRE***. All-purpose roller.

⑬ **GROUND'S GROOMER**. Large area thatch remover, turf sweeper.

⑭ **SOD CUTTERS***. Self-propelled heavy-duty and junior models.

*Self-powered and/or propelled.



SEE ALL THESE AND THE NEW JACOBSEN DYNAMITE LINE GO THRU THEIR PACES AT THE MAY 6th MEETING AT INDIAN HILLS

3711 Lexington Avenue, North St. Paul (612) 484-8411



GREENS' CLIPPINGS (continued from page 4)

A nice thank you letter was received from Dr. Arvo Kallio, University of Minnesota, Duluth Branch. He thanked the officers and members for the Honorary Membership and said it was graciously received and appreciated. Dr. Kallio, the honor is mutual.

We have just learned that Jerry Commers, an associate member, has been appointed distributor of Cushman Golf Carts in Minnesota and parts of Wisconsin. Congratulations Jerry, we wish you well in your new line.

Tom Frost, Superintendent at the White Bear Yacht Club, tells us that on Monday, March 11th, his wife and he became the proud parents of their second baby girl. He said that all concerned are going fine, including "papa." Glad to get the news, Tom and we all wish you and your family the best.

Tom also announces that he has a new assistant at the Yacht Club, Bill Peitz. Bill was formerly assistant to Dick Grundstrom at the Dellwood Hills National Golf Course. Tom said that Bill will be making application for membership in the MGCSA. We hope that Bill and all other superintendents and assistants that are not members will make application and when approved will be active members. We sincerely believe that the association can be a great benefit to its members from a practical standpoint as well as social. There are many things a member can learn from fellow members as well as contribute to them. So let us try to have 100% membership.



Bill Peitz

We had hoped and really believed we were going to have an early start this year until April 3 when we had a snowstorm in the Twin City area, leaving about 7 inches of the white stuff on the ground. This delayed the start of play from 10 days to two weeks, depending on the terrain of the land on the specific course.

More from John Lightfoot about the picnic meeting at Cloquet Country Club in June. You will recall we mentioned in the April issue and said there would be more in subsequent issues. They are looking forward to seeing us there in June and the day will include dinner, golf, tennis, volleyball and what have you, all for the nominal cost of \$5.50 per person. The dinner will consist of Harry's famous roast round-of-beef, relish tray, salad, potatoes and gravy, and dessert. What a day this is going to be. Lunch of soup, coffee or milk will be available for those that wish it. Weather permitting everything will take place out-of-doors.

KEEP THIS FOR DIRECTIONS

From the Twin City area take I-35 to Hwy 33; take 33 for about a mile. After passing Hardee's Restaurant on the right and National Guard Armory on the left, take first turn left going uphill on Big Lake Road. Follow this to Birch Street. Take right turn on Birch to Club House. From the West (Brainerd-Little Falls Area) take 210 to its junction with I-35. Take left on I-25 and onto Hwy 33 as above. From the North (Iron Range area) take 53 to 33 and from Walker area take 2 to Hwy 33. South on 33 through Cloquet (past two stop and go signs). Take right just before reaching Hardee's Restaurant and National Guard Armory. Go uphill on Big Lake Road to Birch Street. Turn right on Birch Street to Club House.

MORE IN JUNE ISSUE.