

A Report on:

THE 45TH ANNUAL GCSAA CONFERENCE

at

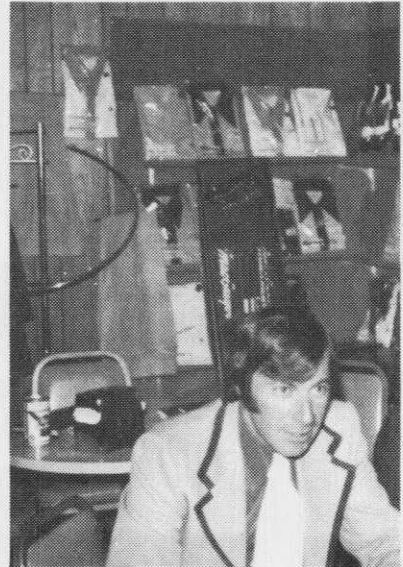
Anaheim, California

February 10th - 15th, 1974

By Larry G. Vetter, President MGCSA

The conference was preceded by a golf tournament for members of the GCSAA. The tournament was held on February 7th and 8th on the Mile Square Country Club Course in Fountain, California and the Yorba Linda Country Club Course, Yorba Linda, California.

The tournament ran into some weather problems. Play was held up both mornings by a heavy frost on the courses, making it necessary to delay play until the frost dissipated. However, on both days the weather changed to shirt-sleeve temperatures and play was then very enjoyable. In addition to the frost on the second day, a strong wind came up after 10:00 a.m., adding to the golfers' problems.



Larry G. Vetter

Larry Vetter was the only representative of the MGCSA and he had putting problems, which is understandable when you realize that he had not played any golf since the latter part of September. He did manage, however, a nice 35 on the last nine, playing in the wind. This left him seven strokes behind the winner who won the championship in a sudden death play-off on February 9th.

The committee provided bus service both days between the hotel and the courses. All in all it was a lot of fun for Larry just to be able to play in February.

On Sunday, February 10th, the "Gould Flight" arrived with about seventy Minnesotans and they ran into a little problem at the registration desk as the lines for pre-registered guests were much longer than the lines for the walk-ins. But they managed to get registered and get settled.

On Monday the educational sessions started and continued through the day. They were well organized and very interesting. In the evening there was a tour of the Queen Mary together with an excellent dinner party and the opportunity to see this facility and to make a tour was a treat and a pleasure.

On Tuesday the educational sessions continued and the exhibits opened and were well received by those in attendance. At noon Milt and Cathryn Wiley hosted a luncheon at the Golden Pheasant for Minnesota Toro and it was attended by a large group of our representatives. In the evening Jack Kolb and Par-Ex sponsored a cocktail party which was also very well attended and appreciated.

Wednesday the educational sessions continued and the exhibition area was also open.

(continued on page 3)

A REPORT OF THE 45TH ANNUAL GCSAA CONFERENCE
(continued from page 2)

Both the educational assemblies and the exhibition area continued on Thursday with the finale to the conference being a banquet and dance. There was a record attendance at this event. The entertainment was excellent as was the food, and the facilities were lovely. It also presented an opportunity to visit and socialize with old friends and to meet new ones.

Friday was devoted to a tour of Disneyland and golf courses. Both were interesting and fun, particularly Disneyland.

Throughout the week the ladies were treated to various tours and attractions in the Los Angeles area.

The conference attracted a record attendance in excess of five thousand.

ELECTION OF OFFICERS AND DIRECTORS

During the conference there was an election of officers and the following officers and directors will guide the GCSAA through the year 1974.

OFFICERS: Charles Baskin
President

Palmer Maples
Vice-President

G. W. Cleaver
Secretary-Treasurer

C. A. Wagoner
President Emeritus

DIRECTORS: R. W. Malpass
T. W. Woehrie
G. C. Witteveen
M. B. Lucas, Jr.
C. H. Tade



Charles G. Baskin, G.C.S.A.A. President

The 1975 GCSAA Conference will be held in New Orleans with the 1976 scheduled for Minneapolis. So the MGCSA members have something to look forward to; it will include a lot of hard work.

After getting settled Gordon Miller of the Gould Company set up a hospitality room. This was in lieu of the going-away cocktail party that he had planned for the Airport at Minneapolis and had to give up because of regulations there.

We wish to express a special thanks to the R. L. Gould Company and Gordon Miller, Jack Kolb of Minnesota Turf Supply Company, Milt Wiley and Glen Rasmussen of Minnesota Toro.

These people do a lot of work for the MGCSA and their support and friendship is greatly appreciated.

Greens' Clippings

We have just heard from John Lightfoot, Superintendent at the Cloquet Country Club where the June meeting (Picnic) will be held, that John is hard at work and knowing John that means something. We are sure that all the Superintendents and their Ladies that attend this Picnic meeting are in for a day they will long remember, so put it on your calendar now.

Jim Lindblad has requested that we express our sincere regrets and apologies to Vince Dahle for inadvertently failing to call on him for a talk at the March meeting. It was definitely an oversight and we hope Vince will forgive us.

There is a tournament of national importance in our area this year. The Western Junior, to be played on the University of Minnesota course the week of July 8th and we have asked Russ Adams to give us a story on the University course for use in a future issue of "Hole Notes." Many of the Superintendents will watch this event, at least some of it, and some advance information about the course from Superintendent Adams will make our visit to the tournament more enjoyable.

It is always nice to hear from our members and friends and Dr. Marvin H. Ferguson of Bryan, Texas has written us a very nice letter thanking us for his 1974 membership card; Dr. Ferguson is an Honorary member. He also says he enjoys receiving "Hole Notes" and he wishes continued success to the members as individuals and as an association of professional men. Thank you, Dr. Ferguson, we appreciate your kind words.

John B. Steel, Grounds Superintendent, St. Charles Country Club, Winnipeg, Manitoba Canada and a member of the Conference Committee of the Royal Canadian Golf Association (continued on page 7)

the Hahn Tournament "greensmower."

The Hahn Tournament Greensmower was named because the quality of cut achieved by this unique product provides the superintendent with "tournament quality" golf greens. The unique ability of the tractor to serve as the power unit for the two other most important greens maintenance jobs, viz; verticutting and spiking provides utility beyond that available in any competitive product.

Greens committees throughout the country find it extremely economical to purchase the Tournament as a complete greens management system, thus avoiding the need to buy old fashioned walk behind maintenance equipment for the difficult jobs of vertical mowing and spiking.

Hahn offers a very attractive lease plan so that no golf course need be without this versatile equipment.



Secret of the greens management system.

Changeover from one set of reels to another is accomplished by simply pulling the connecting pin and quick-couple cable, removing the unit and slipping the desired attachment into place.

KROMER CO

RTE 2, BOX 681A

MOUND, MINNESOTA

TELEPHONE 612-472-4167

MGCSA Research Program

The Research Program is progressing nicely. There are several experimental plots of grasses throughout the state located in such points as Duluth, Alexandria, Redwood Falls, Bemidji, Rochester, U of M, St. Paul Campus and Somerset Country Club. These plots are being supervised by various Golf Course Superintendents and Dr. Ward Stienstra, Department of Plant Pathology, U of M, as to their progress and development. We will keep you advised from time to time what knowledge and information we are able to develop from these plots under the various climatic conditions in the several locations in the state. It is hoped that many benefits will be received that will result in greatly improved playing conditions on our Minnesota Courses.

We had hoped to have something to report to you in this issue but the weather man had other ideas and covered the plots with snow making it impossible to make thorough inspection and study. We will try to have something constructive for you in the May issue.

We all realize that to have such a program as this requires finances and we therefore request some financial help from the clubs. Some of the clubs have made contributions and we thank them for their help and hope that they will continue their financial support. To those that have not yet made a contribution, we ask that you do so now. The results of this program will be beneficial to the members of all clubs by having better playing conditions. A suggested guide for a contribution is 50¢ per member. You can make your contribution by completing the form below and mailing it to the Secretary-Treasurer of the MGCSA, Mr. Dean Sime, % Interlachen Country Club, 6200 Interlachen Blvd., Edina, Minnesota 55436.

We are interested in your very worthy program and are enclosing our check in the amount of \$ _____

Club By Title

APRIL MEETING

The April meeting will be held at the Majestic Oaks Country Club, Monday, April 8th. The Club is located at 701 N.E. Bunker Lake Road. Go North on 65 (Central Ave.) about two miles north of Hwy 242. There are signs at the intersection of 65 and Bunker Lake Road. Golf for those wishing to play. The first tee will be available to the superintendents from 12:30 to 1:30 p.m. This is a fine course and you will make a mistake if you do not take advantage of the opportunity to play it. There will, of course, be the usual forms of entertainment for those not playing golf, such as cards, visiting etc.

Dinner will be at 7 p.m. It will be a complete Filet Dinner at the nominal cost of \$6.00 including all. A business meeting will follow the dinner.

Donovan Lindblad, Superintendent at the Majestic Oaks Country Club will be the Host of the day.

TORO

LAWN SPRINKLERS

TORO

- RESIDENTIAL AND COMMERCIAL SYSTEMS
- MANUAL AND AUTOMATIC SYSTEMS
- AUTHORIZED INSTALLERS (SEE TRADE MARK AD THIS PAGE)
- DESIGN, INSTALLATION, AND SERVICE FOR ALL SYSTEMS.

AUTHORIZED DISTRIBUTOR **MINNESOTA TORO, INC.**

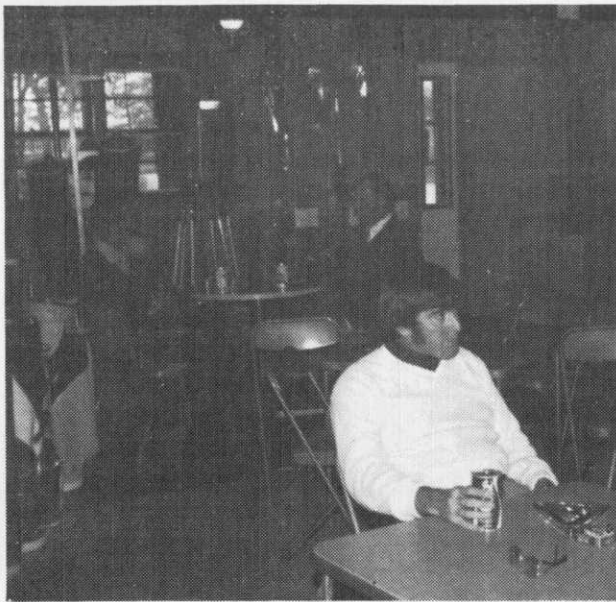
850 SOUTH FLORIDA AVENUE
MINNEAPOLIS, MINNESOTA 55426

- SPECIALIST IN GOLF COURSE AND LARGE AREA SYSTEMS
- 15 YEARS PROFESSIONAL EXPERIENCE WITH OVER 100 GOLF COURSE SYSTEMS INSTALLED
- ONE OF THE AREA'S LARGEST STOCK OF PRODUCTS AND PARTS
- DESIGN, INSTALLATION, AND SERVICE.
- CONSULTING SERVICE AND MATERIALS FOR YOUR OWN INSTALLATION.

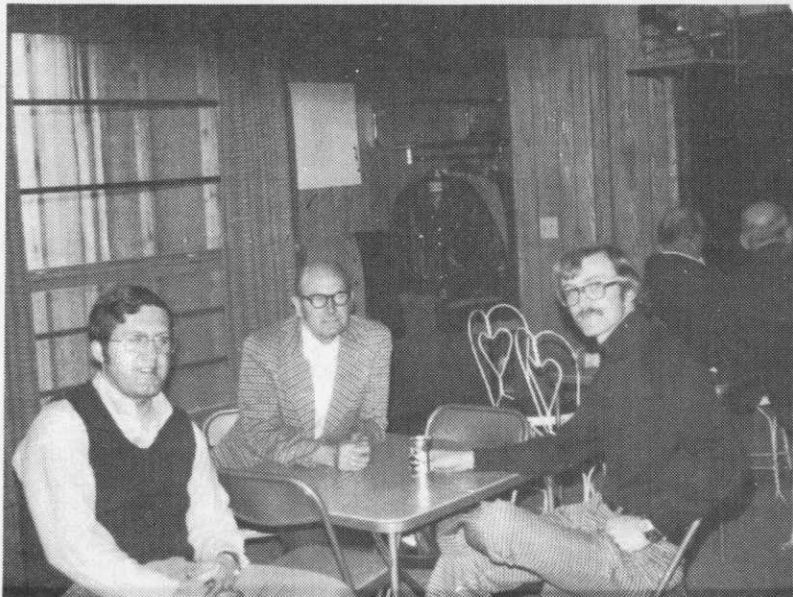
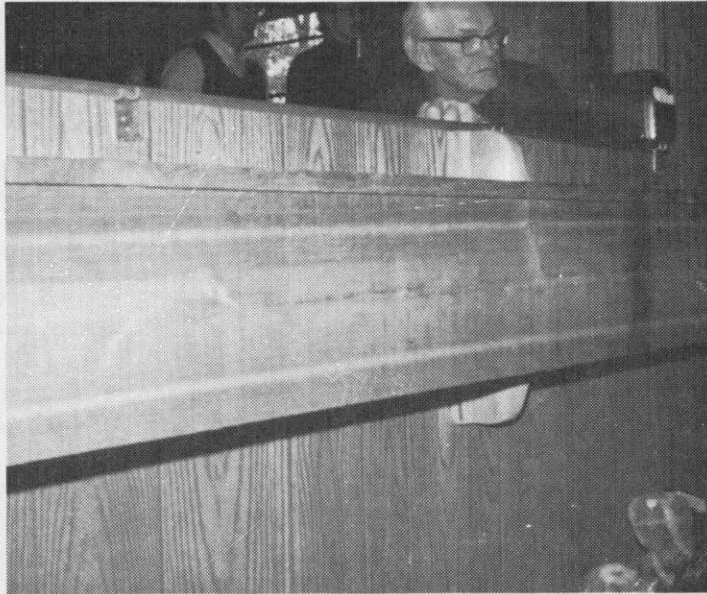
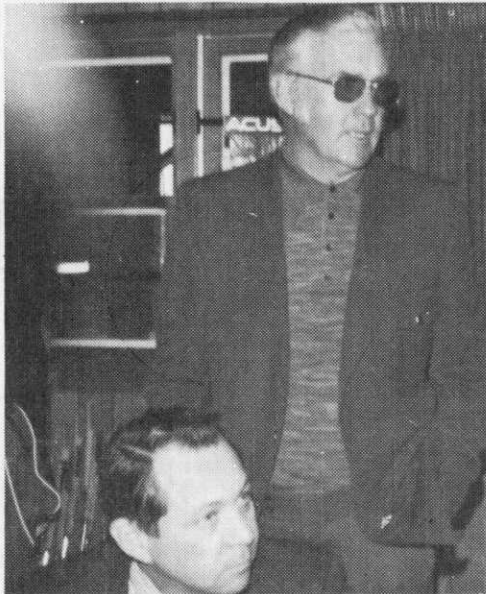
TORO

544-0111

TORO



Pictures taken at March Meeting – Brightwood Hills Golf Club



Greens' Clippings (continued from page 4)

tion National Turfgrass Conference and Exposition thanks us for the publicity we gave their Turfgrass Conference and Show in our "Hole Notes." It is unfortunate that their Conference and the GCSAA Conference are scheduled so close together. It makes it difficult for members to attend both shows. He also extends his best wishes to all our members and also wishes them a successful and trouble free 1974 season.

We are approaching the playing season and at the March meeting I asked several of the superintendents how their course came through the winter. The general answer was "good" up to this point but from here on in the answers varied with almost each superintendent. Some want more moisture; some want a dry, windy spring. This, of course, depends on the terrain of the course; if they are high and dry they want rain or more snow; if they are low and wet they want wind and dry weather so the Man Upstairs has a job cut out for Himself to keep the Superintendents happy.

Ronald Steffenhagen, Assistant Superintendent at the Wayzata Country Club has resigned and will take over the duties of Superintendent at the Orono Municipal Golf Course. We are glad to learn of Ron's advancement and wish him the best.

Dr. Donald White, Department of Horticultural Science, University of Minnesota, will instruct a 4-credit course to be known as "Horticulture 5042 Turf Management."

(continued on page 10)

FOR SALE:

10 Buckner 880 Fairway
Sprinklers
15 Rainbird 707 Greens
Sprinklers with Stands
15cs Quick Couplers
Numerous - Buckner 15
Quick Coupling Valves
5 Halsey Taylor Drinking
Fountains
Stainless Steel Receptor
with Cast Iron Housing

Contact:

Dean Sime
Golf Course Superintendent
Interlachen Country Club
6200 Interlachen Blvd.
Edina, Minnesota 55436
Phone: (612) 929-1661

ANNOUNCEMENT

Jack Kolb, President of the
TURF SUPPLY COMPANY
2970 Dodd Road, St. Paul, Minn., 55121
Announces the appointment of



DAVE KRUPP

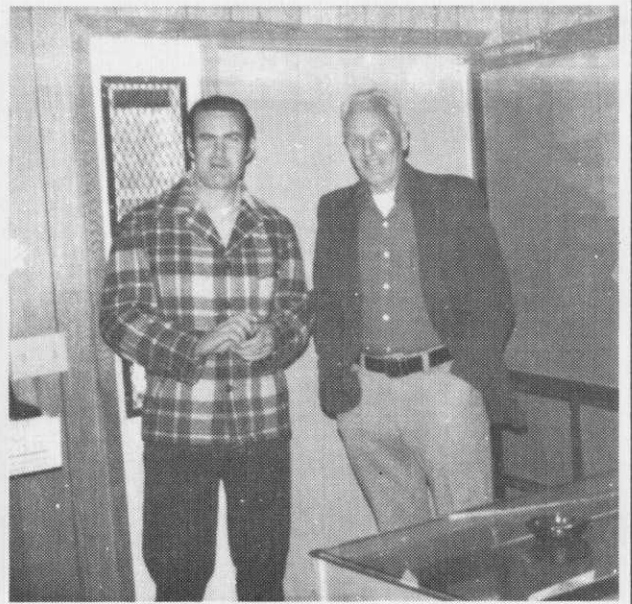
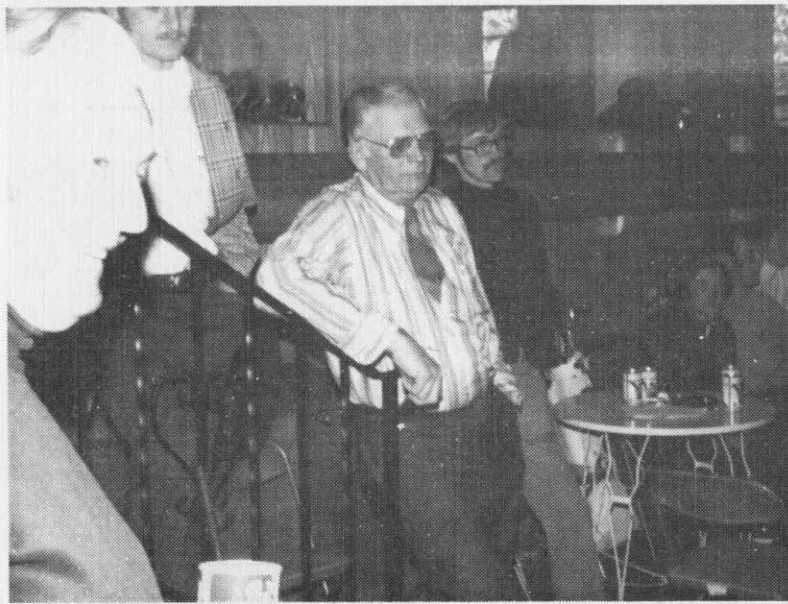
Sales Representative of the
TURF SUPPLY COMPANY

Please welcome Dave when he
calls on you

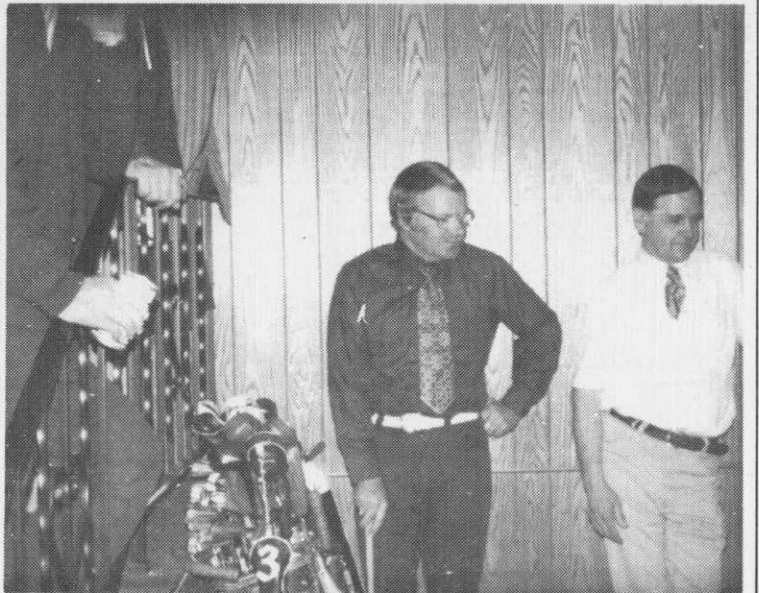
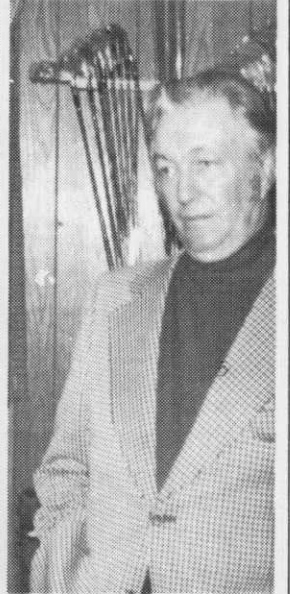
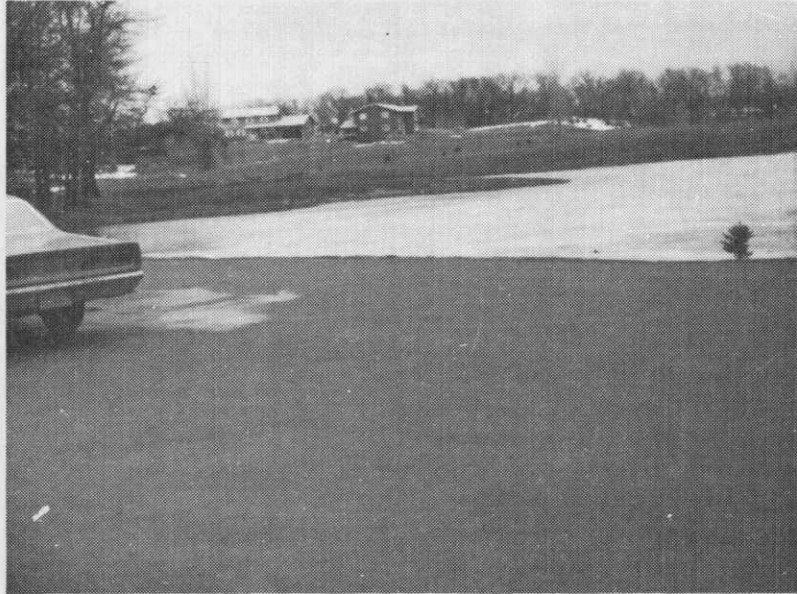
Dave's Home phone number is
(612) 544-6293

GOLF COURSE SUPERINTENDENT WANTED

The Village of Apple Valley will start construction of their new 18 hole 6800 yard par 72 golf course May 1, 1974 and are looking for an experienced superintendent to be on the job during the construction. Salary open. Resume must be received with Jerry Bell, 14200 Cedar Avenue South, Apple Valley, Minnesota 55124 by April 12th. Mr. Bell can be contacted by Phone (612) 432-7105.



Pictures taken at March Meeting – Brightwood Hills Golf Club





TORO SANDPRO

Any way you put it together, you can't beat the features and benefits of the Sand Pro!

SPIKER

SPECIFICATIONS

WEIGHT: 280 lbs.

UNIT WORKING WIDTH: 58".

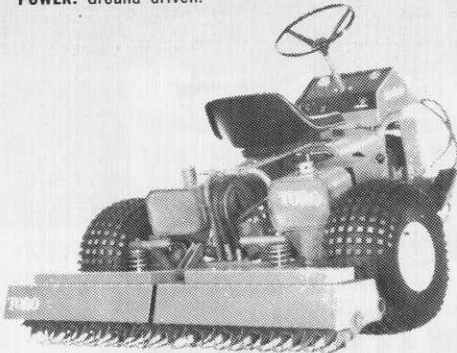
WORKING DEPTH OF SPIKER: 1¼" maximum.

SPACING OF BLADES: 2¾".

NUMBER OF SPIKE HOLES: 21 holes per square foot.

SPIKER BLADES: High carbon steel — .105 inch thick. Special profile design for minimum disturbance of soil surface when spiking. 8 points per blade, 24 blades. 7¾" dia. blade point to point.

POWER: Ground driven.



SPECIFICATIONS

FRAME: All welded tubular-steel construction.

WHEELS: Standard demountable—interchangeable for three positions. 21 x 11.00-8 tires. Extra low-pressure, 4 psi compass tread.

ENGINE: Kohler 8 hp Model 181 SP. Cast iron block, dry element air filter, fuel pump. Rubber mounted.

STARTER: 12 v. Bendix-drive electric starter is standard. Key switch controlled from dash.

DRIVE: 3-wheel hydraulic. Engine-mounted variable-displacement piston pump through flexible coupling to 3 Ross Torqmotors® on wheels.

STEERING: Automotive-type steering wheel. 6:1 reduction ratio.

SEAT: One piece molded with back support. Adjustable forward and back.

OPERATOR CONTROLS: Key start, hand throttle, hand choke, ammeter and hour meter on dashboard. Foot pedal controls forward/reverse and speed. Hand-operated hydraulic control lifts and lowers rake, spiker or grader. Valve disengages pump for towing or pushing.

FUEL TANK: 2.7 gallon.

HYDRAULIC RESERVOIR: 1½ gal.

HYDRAULIC OIL FILTER SYSTEM: 10 micron replaceable element.

SPEED RANGE: Infinitely variable to 5½ m.p.h. maximum.

TURNING RADIUS: Machine turns on zero radius to the left or right.

REFUSE CONTAINER: Removable and located within easy reach of operator.

DIMENSIONS: Width—58½". Overall length—62½". Wheel base—40". Height—42". Weight—approx. 650 lbs. with fluids.

FINISH-GRADER

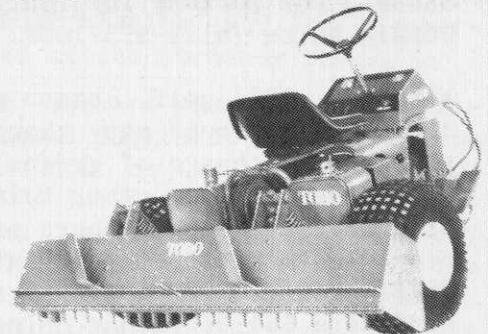
SPECIFICATIONS

WEIGHT: 200 lbs.

DIMENSIONS: Length: 10 inches. Width: 66 inches. Height: 10 inches.

LIFT: Hydraulic.

DESCRIPTION: The Sand Pro Finish-Grader accessory consists of a box plow and scarifier designed to quick mount to the Sand Pro. The unit is capable of light ground maintenance and grooming, replacing hand shoveling and raking on ball diamonds, on golf courses, and for landscaping in small areas where use of larger machinery is not feasible.



TORO

MINNESOTA TORO, INC.

850 South Florida Avenue • Minneapolis, Minnesota 55426

Phone (612) 544-0111 Contact Glenn Rasmussen

AQUASHADE

FOR AQUATIC GROWTH CONTROL

AQUASHADE'S light reduction principle has proven to be effective in controlling aquatic growth. Effective but not harmful.

Use in ponds, lakes, fountains, cooling towers, industrial ponds, aquariums, etc.



M. T. Wiley, Inc.

P.O. BOX 32 - CHASKA, MINNESOTA 55318
Telephone (612) 448-3300

ADVERTISING RATES FOR HOLE NOTES

Yearly Rates

Full Page	\$100.00
Half Page	60.00
Quarter Page	50.00
Eighth Page	25.00

Single Issue

Full Page	\$120.00
Half Page	72.00
Quarter Page	58.00
Eighth Page	30.00

Classified:

Per line of a maximum of 36 type spaces	\$1.00
--	--------

GREENS' CLIPPINGS

(continued from page 7)

The course will be held Monday evenings starting Monday, April 1st from 6 to 9 p.m. in the Horticulture Greenhouse, St. Paul Campus. The course will consist of lectures and laboratory work. The tuition for the course is \$65 and a check for the tuition should be mailed to the Department of Extension Classes, 180 Westbrook Hall, U of M, Minneapolis, Mn. 55455. For further information call Dr. Donald White (612) 373-1609.

With the 1974 golf season not far off there are no doubt many changes, such as personnel, change of greens, tees, new facilities or many other things that are of interest to the members of the MGCSA. Send that kind of information to the MGCSA Office, 5600 Chowen Avenue, Edina, Minnesota 55410. Other things that come to mind are, if you know of any superintendent that is ill or has been and is recovering; if you see any of the old-timers tell us about it, and what they are doing, etc.

BROADLEAF WEEDS controlled positively

with maximum safety
to sensitive grasses
and ornamentals



trimec

TURF HERBICIDES®

U.S. Patent
3,284,186

THE MOST CONTROL AT THE LEAST EXPENSE

TORO

MINNESOTA TORO, INC.

850 South Florida Avenue Minneapolis, Minnesota 55426
Phone (612) 544-0111