

It's in the Hole



Turf Specialist Mike Redmond Joins Wisconsin's Reinders, Inc.

Reinders, Inc. is pleased to announce that Mike Redmond has joined the company's Turf Division as a Turf Specialist and will help the company expand into the Minnesota market.

Redmond has more than 30 years of experience in the turf business and will be helping provide "Solutions and Supplies" for golf courses in Minnesota. He started out in the industry as a golf course superintendent. For the past 30 years, he has worked as a Territory Manager for The Andersons. Prior to that he was with the Scotts Company for 27 years as a Technical Sales Representative and Regional Sales Manager. Redmond will be based out of Little Falls, Minn. and can be reached at 612-963-0752.

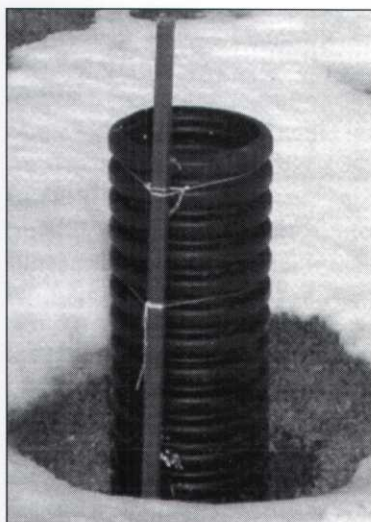
Reinders, Inc. is Wisconsin's largest full service distributor of commercial turf equipment, irrigation products, landscape supplies and Morton water softening and ice control salt. They are the official supplier of turf equipment to the Green Bay Packers and Milwaukee Brewers. The company has six store locations across the state in Milwaukee, Waukesha, Kenosha, Madison, Appleton and Stevens Point.

MGCSA Loses a 39-Year Member

Tony Magina, an MGCSA member since 1965 passed away on September 4, 2004. Tony's wife, Betty, may be reached at (651) 714-5494.

Tricks of the Trade

Do you have trouble finding and/or digging out the drains on your course in the spring? If so, this little trick may help keep your feet warm and dry next



year. Bob Turcotte of Baker Hill Country Club (New Hampshire) discovered a solution to ice-covered drains while cross-country skiing through the woods. He noticed snow-free "wells" around the trees created by wind and radiant heat. He recreated this phenomenon

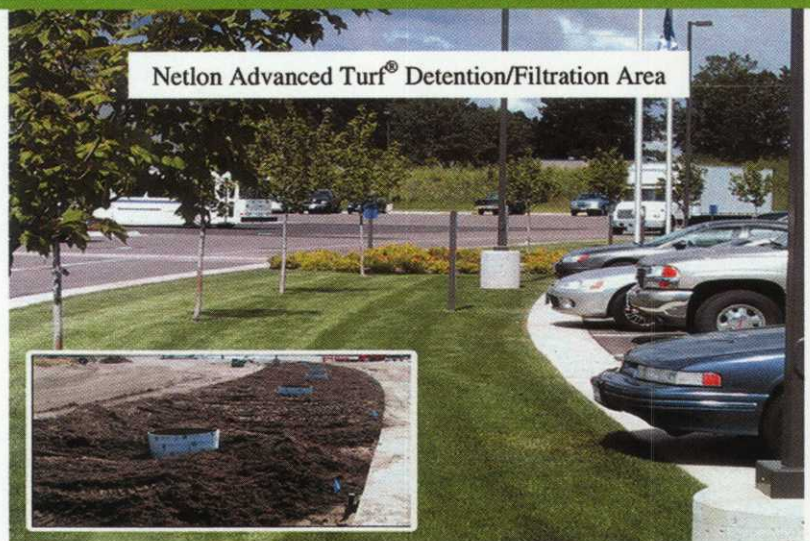
over his drains with 12" black drainage pipe. Bob used a 2-3" section of pipe, which he stood on end and placed over the drain. the pipe is loose to the

ground, but is fastened in place by a grade stake and rope. The wind creates a vortex around the pipe. The black pipe also generates heat from the sun's energy, melting any snow and ice that may accumulate near the drain.

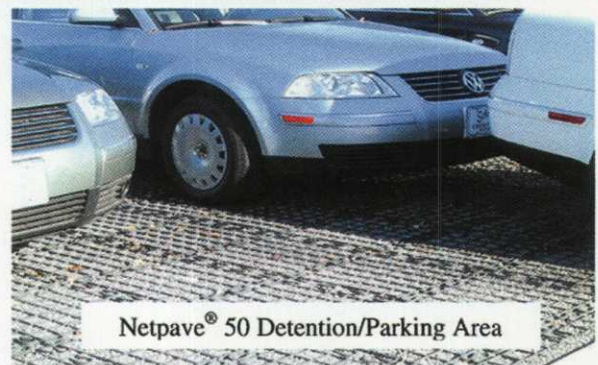
Try this next year on your course and keep warm and dry while your drains take care of themselves

(Editor's Note: We are always looking for interesting tidbits for "It's in the Hole" each month. Please forward information to Jack MacKenzie, CGCS, at jmackenzie426@msn.com or to the MGCSA business office at scott@mgcsa.org.)

Control Stormwater and Increase Parking



NETLON
TURF SYSTEMS



Innovative and creative solutions for stormwater retention, control and management. Contact our engineering or agronomic staff for more information.

GLENN **REHBEIN** COMPANIES 

(763) 784-0657

www.rehbein.com