

It's In the Hole

Mike Kelly, Superintendent at Edina Country Club, participated in the Noran Clinic MS 150 Bike Tour. On June 12th & 13th he joined more than 2,600 people from around the state and successfully completed the 150-mile ride. From sponsor pledges, Mike was able to raise over \$1,600 to help the fight against Muscular Schlerosis. Donations will help support research and local services to those affected by MS.

WindSong Farms, Independence, celebrated its Grand Opening the week of June 14th. Superintendent Scottie Hines and assistants Jeff Girard and Chris Halverson had the course in outstanding conditions for the celebration. Among the guests was course designer Tom Lehman.

Loggers Trail, Stillwater, celebrated its Grand Opening on July 13th. Congratulations to Superintendent John McCarthy and assistants Mark Plombon and Eric Hansen.

Sam Bauer, an undergraduate student at the University of Minnesota, recently received a 2004 Bayer Undergraduate Scholarship for \$1,000. Bauer is pursuing a degree in environmental horticulture with a concentration in turfgrass management.

Stephen Kimball, a sales representative for Bayer Environmental Science, presented Bauer with the scholarship in April. "Sam has an excellent academic record and will be an asset to the green industry," said Kimball. The Bayer Undergraduate Scholarship recognizes students pursuing careers in the green industry who have demonstrated academic excellence and leadership skills.

The 2005 Minnesota Green Expo will take place Jan. 5-7 at the Minneapolis Convention Center. The Minnesota Nursery and Landscape Association (MNLA) and the Minnesota Turf & Grounds Foundation (MTGF) are partners in the regional trade show and educational program which targets a broad spectrum of green industry professionals. The show includes 100 educational seminars and over 850 trade show booths and exhibits. For exhibit or registration information, call 651-633-4987 or 888-886-6652.

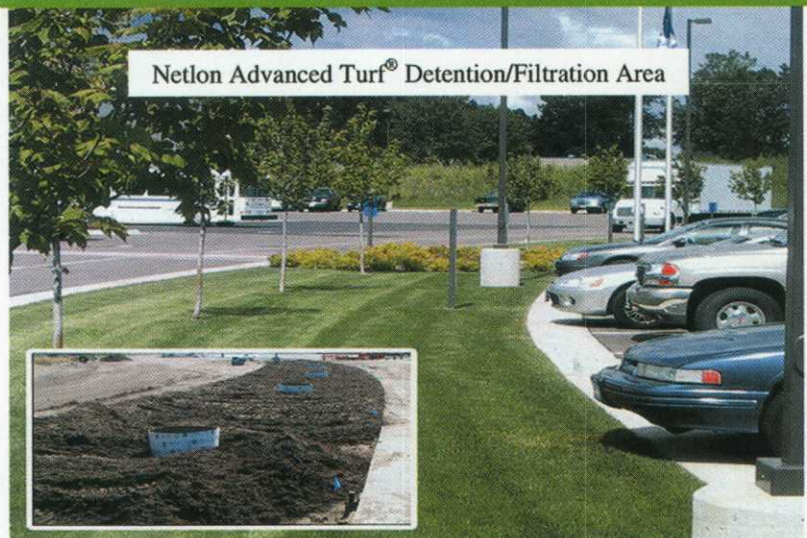
Highlights of the three-day educational program include: Vision and Execution - Ed Laflamme; Building Profits; Selling from the Heart; Plant Combinations; Shrub Roses; PGRs; POA/Bent Competition; Rebuilding Greens; Artificial Turf; Nursery Mechanization; New Annuals; Profits and Promotions, and Strategic Planning.

The show's audience includes nursery and greenhouse growers; garden center operators; landscape and irrigation contractors; landscape designers; lawn, tree and gardening professionals; golf course and park superintendents; school and cemetery grounds supervisors; sports turf managers and arborists.

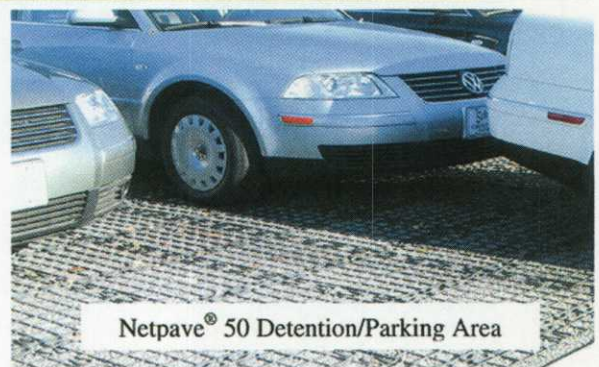
MTI Distributing, Inc. announces their entrance into the **Professional Turf Products business.** MTI and The Andersons Fertilizer reached agreement for distribution in Minnesota and North Dakota on July 21st. Eight days later, on July 29th, MTI and Jacklin Seed reached agreement for distribution in Minnesota, North Dakota and western Wisconsin.

MTI's professional turf products sales force is headed up by Business Manager Shane Andrews along with Technical Representatives Cary Femrite (*Northern Minnesota*), Leif Erickson (*Southern Minnesota*) and Wayne Heintz (*North Dakota*).

Control Stormwater and Increase Parking



NETLON
TURF SYSTEMS



Innovative and creative solutions for stormwater retention, control and management. Contact our engineering or agronomic staff for more information.

GLENN **REHBEIN** COMPANIES 

(763) 784-0657

www.rehbein.com