

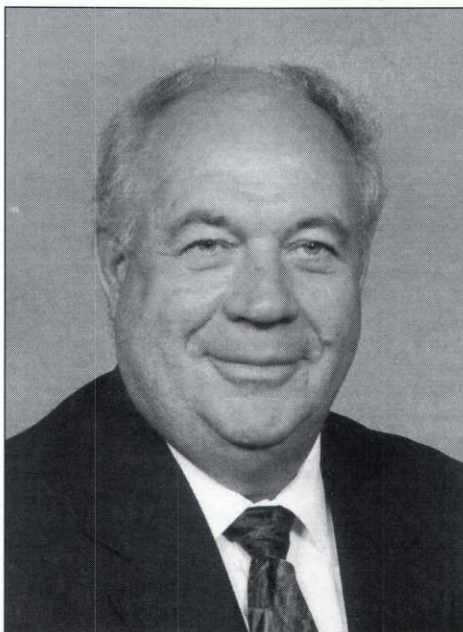
Local Business Leader Glenn Rehbein Dies in Accident

Business he created had major impact on Twin Cities' golf courses, sports fields, and development projects

Twin Cities entrepreneur and business leader Glenn Rehbein died on February 26th of injuries from an accident. Rehbein was riding an all-terrain vehicle with a group of people in a desert area outside of Phoenix, Arizona. He was 65 years old.

Glenn started a business in his hometown of Lino Lakes in 1956 with a small loan from his uncle that he used to purchase equipment and enter the sod business. Today, Glenn Rehbein Companies are a multi-million dollar environmental services firm that provides brownfield revitalization (the clean up of polluted industrial sites), excavation, land development, civil engineering, surveying, and specialty turf construction to Midwestern and national clients.

"We are incredibly saddened by this loss," said Bart Rehbein, Glenn's son and the president of Glenn Rehbein Companies. "As a father and as a business leader, he was someone who led by



Glenn Rehbein

example. He believed in hard work and always doing the best job possible. If he gave you his word, that was all that mattered. Glenn was an incredibly caring person who never lost sight of what was important in life." Glenn is survived by his wife Myrna and four children, Robyn, Bart, Dirk and Mark.

"Glenn Rehbein leaves behind shoes that cannot be filled," said Tom Lehman, PGA golfer and the designer of the Troy Burne Golf Club, which was developed and is currently owned and operated by Glenn Rehbein Companies. "In many ways he was larger than life. I admired and respected him very much and always will. He had strength of character, a tender heart, a courageous spirit, and a wonderful sense of humor. To me, he was a loyal friend, supporting all that I did in many, many, ways. I will miss him."

(Continued on Page 14)

The Aerating Fountain from Otterbine



AT MTI DISTRIBUTING, we know that water quality is equally as important as aesthetics. That's why we offer Otterbine Aerating Fountains to manage your ponds and lakes, as they have been independently tested and proven to create excellent circulation and oxygen transfer. Effective circulation is key in reducing algae and the beauty of an Otterbine spray pattern speaks for itself!

Highlighted features include:

- Unique Mixed-Flow Pumping System
- Eight Interchangeable Spray Patterns
- 5-Year All Inclusive Warranty
- Decorative Float Covers



Brooklyn Center, MN
763-592-5600
800-362-3665
www.mtidistributing.com



**MGCSA Legacy Scholarships
and Joseph S. Garske
Scholarships
are now available.**

**Call the MGCSA office
at 952-473-0557
or 1-800-MGCSA-27,
e-mail scott@mgcsa.org
or visit www.mgcsa.org**

Glenn Rehbein—

(Continued from Page 13)

An impact on the Twin Cities and beyond Glenn Rehbein and his many businesses have played important roles in a number of major projects throughout the Twin Cities. Glenn Rehbein Companies are experts in environmental remediation, site development, and other work needed for major construction projects. They have played key roles in the Medtronic Corporate Campus, Block E in downtown Minneapolis, Saint Paul's Upper Landing, the Minneapolis Federal Reserve Bank, the Troy Burne Golf Club in Hudson, WI.

His most recent endeavor in the golf course industry is Windsong Farm Golf Club in Independence, which will open this year and is envisioned to be one of the finest private clubs in America.

Glenn Rehbein Companies also worked on a number of projects at the University of Minnesota, including the Civil

Engineering Building, a major addition to the university's hospital, and the Walter Library. They are also preparing the site for the new Guthrie Theatre in Minneapolis.

"Glenn was a giant in the construction industry and will be sorely missed," said Tom McGough Sr., CEO of McGough

"Glenn was clearly one of our great business leaders ... he was a terrific person and someone who was extremely civic minded."

Companies. "His word was his bond. We have been fortunate to work with Glenn and his business for decades on a number of projects across the Twin Cities. He was a person who delivered what he promised and was a straight shooter. This is a great loss."

Glenn Rehbein Companies were also a national leader in sports facilities and golf

course development. They developed a portable natural turf system for the Reliant Stadium in Houston, TX, which recently hosted the Super Bowl. Across the country, thousands of amateur athletes have played on sites built in part by Glenn Rehbein Companies.

Glenn believed in giving back to the community and was a strong supporter of the Urban Ventures Leadership Foundation, Sharing and Caring Hands, Children's Cancer Research Fund, and the National Sports Center in Blaine. He also supported a number of local churches and was a member of Rice Creek Covenant Church in Lino Lakes.

"Glenn was clearly one of our great business leaders," said Paul Erickson, Executive Director of the Minnesota Amateur Sports Commission. "I had the pleasure of working with him for more than 20 years and saw how involved he was in the community. He was a terrific person and someone who was extremely civic minded. He will be missed by many."

**CARRIES JUST ABOUT
EVERYTHING
BUT A BIG PRICE TAG.**

Kawasaki

UTILITY VEHICLES

- Liquid-cooled, V-Twin engine
- Air intake system overhead
- 1,330 lb. load capacity
- Rack & pinion steering
- Sound-insulated and extra-quiet muffler
- Governed to 16 mph safety
- Lock-out differential for min. ground disturbance
- Full line of accessories available



KAWASAKI 3020 MULE™

Call Tim Commers or
Steve Scanlan today...
(612) 333-3487 or
Toll Free 1 (800) 759-5343

CUSHMAN MOTOR CO., INC.

2909 EAST FRANKLIN AVENUE, MINNEAPOLIS, MINNESOTA 55406
(612) 333-3487 • Fax (612) 333-5903 • Toll Free 1-800-759-5343