



HOLE NOTES

mgcsa.org



Vol. 34, No. 4

Official Publication of the Minnesota Golf Course Superintendents' Association

June 2003

TROE CENTER AND THE UNIVERSITY OF MINNESOTA UPDATE ANNUAL ISSUE

2003 TROE CENTER UPDATE

By Dr. Brian Horgan
University of Minnesota

After almost one year since we broke ground on the new Turfgrass Research, Outreach and Education Center on the St. Paul Campus, we have made some great strides towards the future. The USGA green donated by the MGCSA was seeded in September 2002 and is growing in well. Although last fall did not provide the best conditions for plant growth and development, the L93 bentgrass seedlings performed well through the winter, even those plots that were not covered. The August issue of Hole Notes will present the results of our cover study that was performed at the TROE Center and at Rolling Green C.C.

Along side of the USGA green, we have seeded an additional 25,000 sq ft. native soil putting green with L93 bentgrass. For those of you that do not grow L93, don't worry, we received NTEP grants to evaluate creeping bentgrass grown as putting greens and fairways. We also received an NTEP grant to evaluate fine fescue. All three of these studies will be seeded this fall and will last for 5 years.

You've got shade problems, well we will too in about 10 years.



Kentucky Bluegrass Runoff Facility at the University of Minnesota's TROE Center

Last fall, we planted four different varieties of maple trees (replicated 4 times). The experiment was designed so that varying levels of shade would exist under the canopy that can be seeded with different varieties of grasses. The area will be used to evaluate products to enhance growth in limited light conditions, and create best management practices for various levels of maintenance.

(Continued on Page 10)

**PERIODICAL
PLEASE DELIVER PROMPTLY**

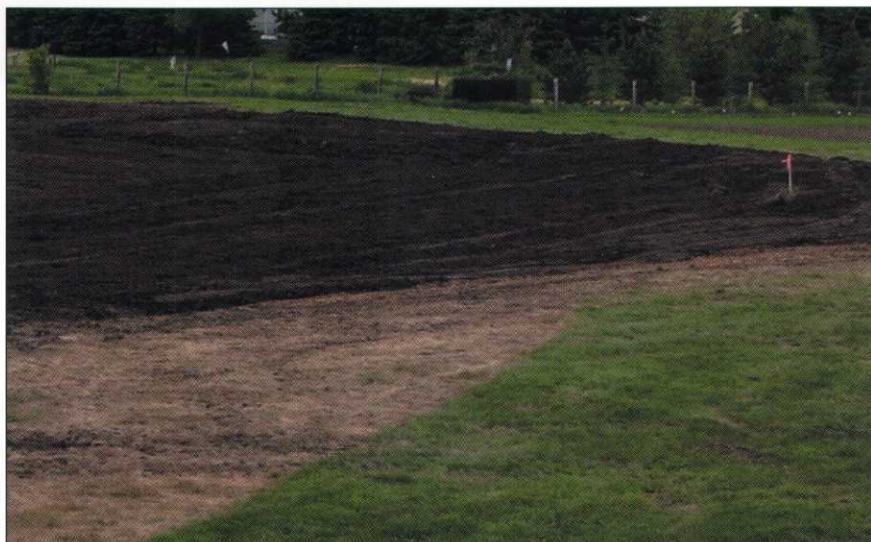
TROE Center Update—

(Continued from Page 1)

At the TROE Center this year, we will be installing irrigation and seeding 2.5 acres of Kentucky bluegrass, installing irrigation and seeding a 40,000 sq ft bentgrass fairway, building and establishing a runoff facility to simulate both home lawn and golf course fairway conditions as well as constructing a small shed to store equipment.

So where has the \$25,000 contribution (first of four installments) that the MGCSA made to the University of Minnesota turf-grass endowment gone? Well, unlike my personal investments, that money was deposited in an account on campus that guarantees a 5% return on investment. That money is growing as we continue to fundraise.

We have been doing a lot of construction and fundraising to develop and build the research center. However, we have also been writing grants and starting research projects. What is a research center if no research is performed? Five



Bentgrass Runoff at the TROE Center. Working with USDA/ARS scientist Pam Rice. Will evaluate nutrients and pesticide movement. Each of the 24 plots are 8' by 24'.

of these research projects are described in detail in this issue of Hole Notes. In the future, the June issue of Hole Notes will be dedicated to the MGCSA's investment into ongoing research projects and updates on the research center at the University of Minnesota. Thanks again for your support.

**CARRIES JUST ABOUT
EVERYTHING
BUT A BIG PRICE TAG.**

Kawasaki UTILITY VEHICLES

- Liquid-cooled, V-Twin engine
- Air intake system overhead
- 1,330 lb. load capacity
- Rack & pinion steering
- Sound-insulated and extra-quiet muffler
- Governed to 16 mph safety
- Lock-out differential for min. ground disturbance
- Full line of accessories available



KAWASAKI 3020 MULE™

Call Tim Commers or
Steve Scanlan today...
(612) 333-3487 or
Toll Free 1 (800) 759-5343

CUSHMAN MOTOR CO., INC.

2909 EAST FRANKLIN AVENUE, MINNEAPOLIS, MINNESOTA 55406
(612) 333-3487 • Fax (612) 333-5903 • Toll Free 1-800-759-5343