

# Trans-Miss Grants \$8,000 In Annual Scholarships To GCSAA's 'Footsteps On The Green' Program

On July 1, the Trans-Mississippi Turf Scholarship Fund began funding the "Footsteps on the Green" award competition which offers educational aid to the children and grandchildren of members of the Golf Course Superintendents Association who are following in their parents' or grandparents' footsteps into the golf course management profession.

In a joint announcement by Tom L. Crow, president of the Trans-Mississippi Turf Scholarship Fund, and Steve Mona, chief executive officer of the GCSAA, the Trans will grant \$8,000 to the Footsteps program on an annual basis.

**The first place winner of the competition receives a \$3,500 scholarship. Second place will get \$2,500 and third place \$1,500. In addition a merit award of \$500 goes to the fourth place winner**

"We are pleased to support this excellent program which falls in line with the spirit of the scholarships we have granted since 1953," said Crow, "and we will continue our regular scholarships as we help the GCSAA with its Footsteps program."

Mona, expressing his appreciation for the Trans-Mississippi support of the GCSAA Footsteps competition, commended the Trans "for its dedication to education and promoting the game of golf."

**Eligibility requirements** call for one or more of the applicant's parents or grandparents to have been a GCSAA member for five or more consecutive years and currently must be an active GCSAA member in one of the following classifications: A, B, C, Retired-A, Retired-B or AA-Life.

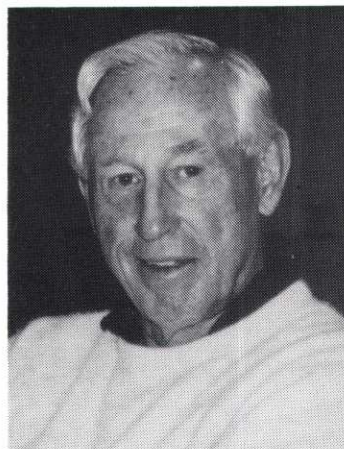
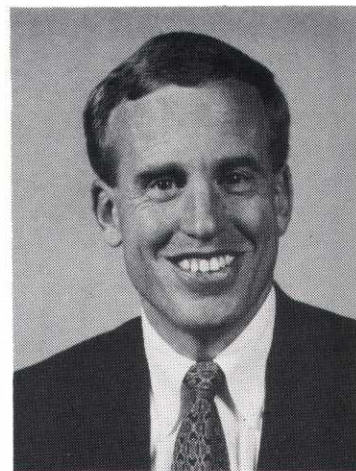
The competition is open to natural or adoptive offspring of GCSAA members. Children or grandchildren of deceased members also are eligible if the member was active at the time of his or her death.

**Past winners are ineligible to apply the following year, but they may re-apply after a one-year hiatus.** Preference will be given to applicants who have not won in the past. Although any number of students from the same family may apply, only one student per family will be eligible to receive an award.

Current members of the Board of Directors/Foundation Board of Trustees and their families are not eligible to receive this award.

**Applicants must be enrolled full-time** in a recognized college/university undergraduate program in a major field related to golf/turf management and must have completed 12 credit hours in a major field of study (sophomore, junior or senior). In the case of a two-year program, the student

STEVE MONA  
CEO / GCSAA



TOM CROW  
Trans-Miss President

must be enrolled full-time and must have completed 12 credit hours, a minimum of which should be nine hours of golf course management related courses. Applicants must be pursuing a career in golf course management.

Applicants will be evaluated on academic achievements, extra-curricular activities and community involvement, which may include membership in a GCSAA student chapter.

Applicants also must complete a 100-word essay on why they have chosen a career in golf course management and describe their own observations, insights and expectations about their professional and career goals. The essay must be original and not previously submitted to the GCSAA.

**Financial need shall not be a factor in the selection,** but an applicant must be a GCSAA member.

## APPLICATION PROCEDURES

Students must complete and submit an application form and supply the following under one cover:

1. Transcripts from all high schools and colleges attended, including the most recent semester completed.
2. Typed original essay.
3. All applications must be postmarked by April 15, 2001.
4. Additional application booklets may be obtained from Affiliated Chapter Presidents, the GCSAA Career Development Department or on the GCSAA website: ([www.gcsaa.org](http://www.gcsaa.org)).

"It is important to follow directions exactly," said Teri Harris, director of development for the GCSAA.

The packets should be sent to:

GCSAA Career Development Department  
GCSAA Footsteps on the Green Award  
1421 Research Park Drive  
Lawrence, KS 66049-3859