

Here's a Hole-by-Hole View of North Links GC

By **JERRY STORJOHANN**
Superintendent, North Links Golf Course

North Links Golf Course is a 6,073 yard, 18-hole public course with a two-hole practice facility and driving range. It is part of The Wilson Golf Group, owned by Ken and Ruth Wilson. This is a links style course with small trees and natural rough areas (no mow areas). This course was built to challenge all levels of golf with four different sets of tees, sloping greens, narrow fairways and many bunkers. Many upgrades have been and are being done to the facility since purchased by Ken Wilson two years ago. Look forward to seeing everyone on Monday, August 17 and hope everyone can make it.

This is a brief description of NLGC.

1 479 Yards Par 5

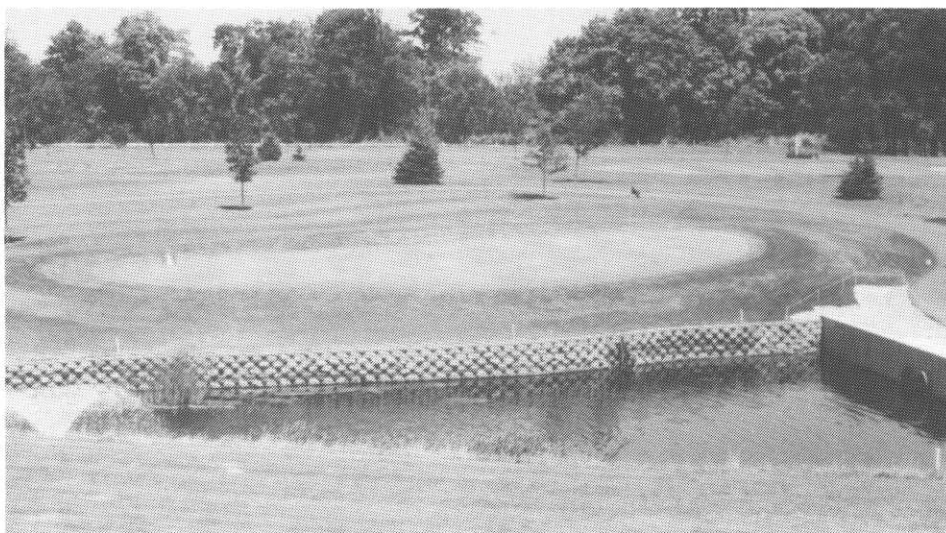
Dogleg right with sand and grass bunkers bordering left side of fairway. Water hazards on both the left and right side of fairway that will grab a mis-hit approach shot. Green slopes from back to front.

2 318 Yards Par 4

This is the second shortest par 4 on the course. Straight away hole with a narrow green placed in front of a deep ravine to collect long approach shots.

3 151 Yards Par 3

A ravine on two sides borders this hole. It features a double green shared with hole 12 — a similar par 3. The tee shot must carry a large bunker that fronts the green and also stay below the hole to avoid a slippery putt on a severely sloping green.



4 377 Yards Par 4

Hole 4 starts by crossing a 220-foot suspension bridge that spans a deep ravine. Large trees line left side of the fairway. Bunkers guard both sides of the fairway. Easy approach shot to green with a bunker left side of green.

5 386 Yards Par 4

Easy par 4. Slight dogleg right with fairway bunkers on right side. Narrow green with bunker on right front.

6 352 Yards Par 4

Dogleg right with trees bordering right side of fairway, bunkers on left side of fairway. Easy approach shot to medium-sized green.

7 497 Yards Par 5

Right side of one of the longest par 5s is lined with trees. Hole starts

out straight, dogleg right with approach shot of 100-125 yards over pond to reach small, narrow-sloped green.

8 108 Yards Par 3

Really short par 3 with a bunker to left and front of green. Backdrop consists of dense woods waiting to catch shots that fly too far.

9 365 Yards Par 4

Tee shot through a chute of trees to a large landing area. Out-of-bounds stakes guard right side of this hole. Bunkers guard left and right side of undulating green.

10 307 Yards Par 4

Shortest par 4 on the course. Water hazards on right side of fairway and behind green, with a bunker on left side of green makes this a short

(Continued on Page 15)

North Links—

(Continued from Page 13)

but challenging par 4.

11 **327 Yards**
Par 4
A light dogleg left with water hazards all around tee. Narrow landing area, easy approach shot to severely sloped back to front green, with bunker left front.

12 **154 Yards**
Par 3
Almost a mirror image of adjacent hole number 3 but with a more severe slope from back to front. Keep the ball below the hole to avoid a very slippery downhill putt.

13 **487 Yards**
Par 5
Hole starts out straight, then doglegs left with dense tree line on left side of fairway and bunkers on right. The green has steep undulations with a small left front bunker.

14 **414 Yards**
Par 4
Longest par 4 on the course. Narrow fairway with nice landing area and no surprises. Grip it and rip it! Green is challengingly sloped and guarded by three bunkers, one on the left and two on the right.



15 **497 Yards**
Par 5
This hole is the same distance as number 7 — the longest two holes on the course. Narrow fairway doglegs left, no mow areas on both sides of the rough, beware of long grass. Small sloped green with a large deep bunker left front.

16 **164 Yards**
Par 3
Longest par 3 on course. Straight forward hole. Large sloped green with bunkers guarding right front and side. No mow areas bordering green surround.



17 **338 Yards**
Par 4
A short par 4 with water hazards to the left side of tee and rough. Natural no mow area borders on right side of rough. The green has water hazards to left and back-side. Large bunker in front right makes approach shot to small, narrow green a challenge.

18 **352 Yards**
Par 4
Difficult finishing hole with water hazards lining both sides of the fairway, with a challenging approach shot to a two-tier green. Bunker located front left of green makes for a fun finish.

